

Canon

PIXMA Pro 9000 Photo Printer

PIXMA Pro 9000 Photo Printer

Technical Information¹

Print Speed²

4" x 6" borderless: approx. 30 seconds
8" x 10" borderless: approx. 52 seconds
11" x 14" photo: approx. 1 minute 23 seconds

Number of Nozzles

768 x 8 colors (Photo BK, C, M, Y, PC, PM, R, G)
Total: 6,144

Picoliter Size (color)

2

Print Resolution (up to)³

Black: 4800 x 2400 dpi
Color: 4800 x 2400 dpi

Standard Interface(s)

USB 2.0 Hi-Speed⁴ and Direct Print Port (cables not included)

Buffer/RAM

42KB

Paper Sizes

4" x 6", 4" x 8", 5" x 7", 8" x 10", Letter, Legal, 13" x 19", U.S. #10 Envelopes

Paper Handling

Top Feeding (ASF); Front Feeding (Single sheet up to 1.2mm paper thickness)

Featured Technologies

FINE, ChromaLife 100, PictBridge

Noise Level (approx.)

37 dB(A) in the best quality mode

Power Source

120V AC, 60Hz

Size

Dimensions: 26.0"(W) x 7.6"(H) x 13.9"(D)
Weight: 30.8 lbs.

Software Included⁵

CD-ROM including Printer Driver, Setup Software and User's Guide, Electronic Photo Application Guide, Electronic User's Guide, e-registration, Easy-PhotoPrint (Windows/Mac), Easy-PhotoPrint Pro (Windows/Mac), PhotoRecord[®] (Windows), Easy-WebPrint (Windows only, requires Microsoft[®] Internet Explorer version 5.5, version 6.0 recommended)

OS Compatibility⁵

Windows[®] XP/2000/Me/98 and Mac OS X v.10.2.1 to 10.4.x

Warranty⁶

Toll-free technical phone support plus 1-year limited warranty with InstantExchange program.

1 Specifications are subject to change without notice. All printer output images are simulated.

2 Photo print speeds are based on the standard mode driver setting using photo test pattern(s) and select Canon Photo Paper. Print speed measured as soon as first page begins to feed into printer and will vary depending on system configuration, interface, software, document complexity, print mode, types of paper used and page coverage. See www.usa.canon.com/printspeed for additional information.

3 Resolution may vary based on driver setting. Maximum resolution of 4800 x 1200 dpi used at the bottom edge of the page. Ink droplets can be placed with a horizontal pitch of 1/4800 inch at minimum.

4 USB 2.0 Hi-Speed requires Windows XP, 2000 or Mac OS X operating systems. For Windows 98, Me and Mac OS X v.10.2 to 10.2.6 operating systems, the printer will operate at USB 1.1 specifications.

5 System requirements vary by application.

6 Warranty programs are subject to certain conditions and restrictions. See www.canontechsupport.com for details.



Ordering Information

Printer and Accessories

PIXMA Pro9000 Photo Printer 9995A001

Ink Tanks

CLI-8BK	0620B002
CLI-8C	0621B002
CLI-8M	0622B002
CLI-8Y	0623B002
CLI-8PC	0624B002
CLI-8PM	0625B002
CLI-8R	0626B002
CLI-8G	0627B002

Canon Specialty Paper

Fine Art Paper Photo Rag (8.5" x 11"/20 sheets)	0587B005
Fine Art Paper Photo Rag (13" x 19"/20 sheets)	0587B009
Fine Art Paper Premium Matte (8.5" x 11"/20 sheets)	1263B004
Fine Art Paper Premium Matte (13" x 19"/20 sheets)	1263B007
Matte Photo Paper (4" x 6"/120 sheets)	7981A014
Matte Photo Paper (8.5" x 11"/50 sheets)	7981A004
Matte Photo Paper (13" x 19"/20 sheets)	7981A011
Museum Etching (8.5" x 11"/20 sheets)	1262B004
Museum Etching (13" x 19"/20 sheets)	1262B007
Photo Paper Glossy (4" x 6"/50 sheets)	0775B021
Photo Paper Glossy (4" x 6"/100 sheets)	0775B022
Photo Paper Glossy (8.5" x 11"/50 sheets)	0775B023
Photo Paper Glossy (8.5" x 11"/100 sheets)	0775B024
Photo Paper Plus Glossy (4" x 6"/20 sheets)	7980A007
Photo Paper Plus Glossy (4" x 6"/50 sheets)	7980A012
Photo Paper Plus Glossy (4" x 6"/120 sheets)	7980A022
Photo Paper Plus Glossy (5" x 7"/20 sheets)	7980A019
Photo Paper Plus Glossy (8.5" x 11"/20 sheets)	7980A006
Photo Paper Plus Glossy (13" x 19"/20 sheets)	7980A014
Photo Paper Plus Semi Gloss (4" x 6"/50 sheets)	1686B014
Photo Paper Plus Semi Gloss (8" x 10"/20 sheets)	1686B017
Photo Paper Plus Semi Gloss (8.5" x 11"/20 sheets)	1686B020
Photo Paper Plus Semi Gloss (13" x 19"/20 sheets)	1686B031
Photo Paper Pro (4" x 6"/20 sheets)	1029A014
Photo Paper Pro (4" x 6"/75 sheets)	1029A027
Photo Paper Pro (8" x 10"/20 sheets)	1029A059
Photo Paper Pro (8.5" x 11"/15 sheets)	1029A004
Photo Paper Pro (8.5" x 11"/30 sheets)	1029A028
Photo Paper Pro (13" x 19"/10 sheets)	1029A009

For More Information Visit

www.usa.canon.com/consumer

For the name of the nearest dealer, call:
1-800-OK-CANON

Canon U.S.A., Inc.

One Canon Plaza, Lake Success, NY 11042
1-800-OK-CANON

Canon Canada, Inc.

6390 Dixie Road, Mississauga, Ontario L5T 1P7, Canada
1-800-OK-CANON

Canon Latin America, Inc.

703 Waterford Way, Suite 400, Miami, FL 33126
1-305-260-7400

Canon
image*ANYWARE*

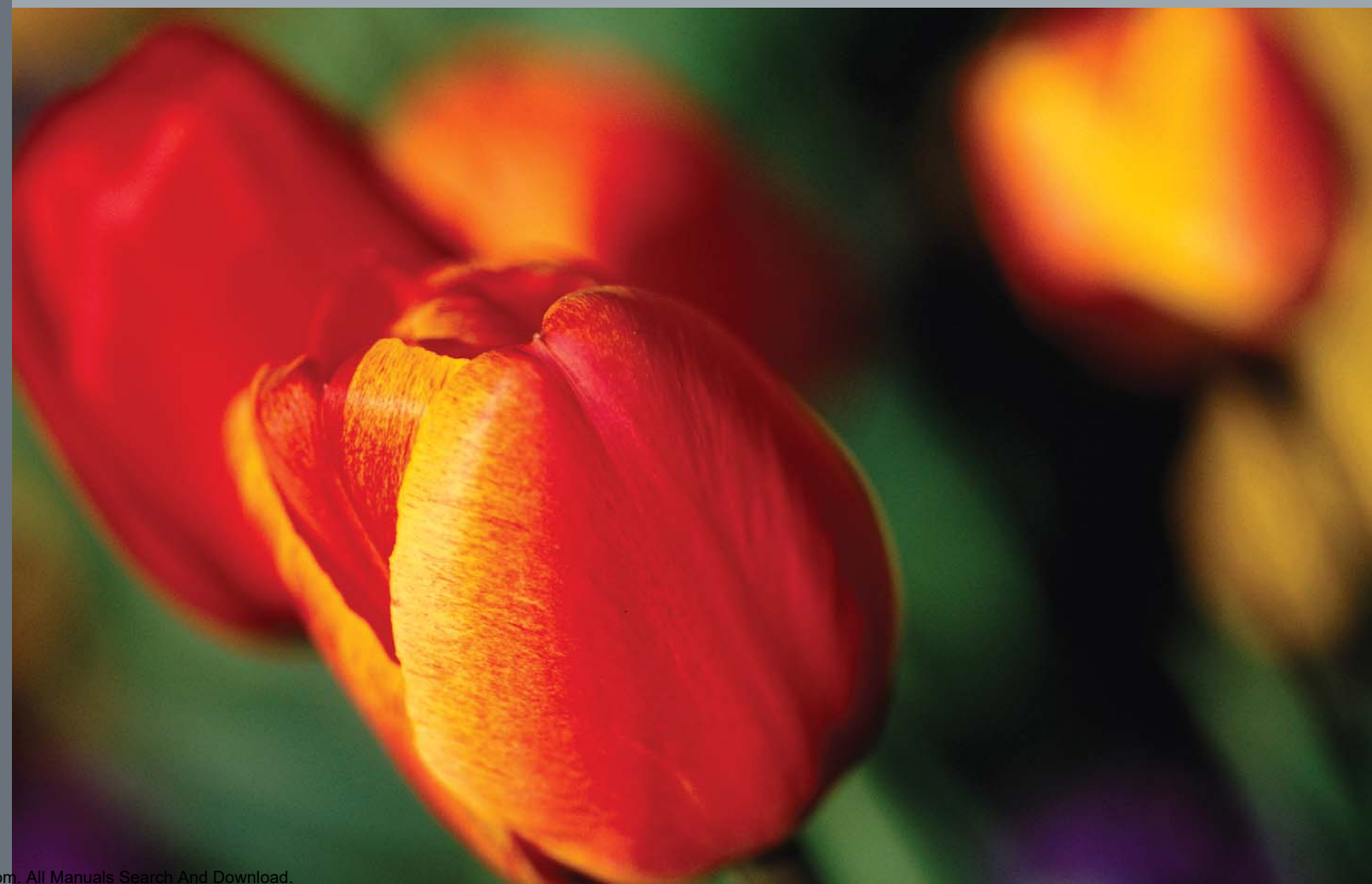


©2006 Canon U.S.A., Inc. Canon, PIXMA and PhotoRecord are registered trademarks of Canon Inc. in the United States and may also be registered trademarks or trademarks in other countries. IMAGE*ANYWARE* is a trademark of Canon. Microsoft, Windows and the Windows logo are trademarks or registered trademarks of Microsoft Corporation in the United States and/or other countries. Mac and the Mac logo are trademarks of Apple Computer, Inc., registered in the U.S. and other countries. The USB-IF logos are trademarks of Universal Serial Bus Implementers Forum, Inc. Photo Rag is a trademark of Hahnemühle FineArt GmbH Germany. All other product and brand names are trademarks of their respective owners. As an ENERGY STAR[®] partner, Canon U.S.A., Inc. has determined that this product meets the ENERGY STAR[®] guidelines for energy efficiency.

0059W367

Download from Www.Somanuals.com. All Manuals Search And Download.

Canon



With the PIXMA Pro9000, you'll discover just how good a photographer you really are. The 8-color ink system opens up your color palette, and advanced software fine tunes your output. Ready to move up to 13"x 19," or print on fine art papers? This professional-grade printer will take you to the next level.

- Maximum 4800 x 2400 dpi FINE print head technology
- Photo lab quality 11" x 14" color photo in approx. 1 minute 23 seconds
- Support for fine art paper up to 13" x 19" with two separate paper paths, including front feeder for heavyweight paper types
- Professional printer features using Easy-PhotoPrint Pro (plug-in software for Adobe® Photoshop® CS/CS2)
- New printer driver with advanced color controls
- ChromaLife100 system for long lasting, beautiful photos



The Advantage of Canon-to-Canon Quality



PictBridge/Camera Direct

PictBridge—advanced camera direct capabilities available in the EOS 30D and PIXMA Pro combinations offer enhanced printing features that includes the ability to adjust color balance, color tone, color saturation, image contrast and brightness directly on the camera, thereby providing photographers with greater control. This new technology strengthens its compatibility with Canon printers such that the 30D can more accurately communicate shooting information and even the finest image adjustments when printing. 


Contact Sheets

When connected to select Canon photo printers, the EOS 30D can generate 35-frame contact sheets resembling film contact sheets. Photographers have never had this kind of organizational tool ready at their disposal.



35-image contact sheet

Printing with Shooting Information

Another camera direct feature on the EOS 30D is the ability to make single-image or 20-image prints that display all major shooting information. Underneath the image, the camera model, lens model, shooting mode, shutter and aperture settings, exposure compensation, ISO value and White Balance are displayed—excellent for shot comparison and learning. 



20-image print with EXIF information

Face Brightener

When attached to select PictBridge-compatible printers, the EOS 30D has a new Face Brightener function. In the event that portraits are backlit, or if the subject appears too dark, this feature makes it possible to get a good print from an image file that otherwise might have to be touched up on a computer.



original

with face brightener



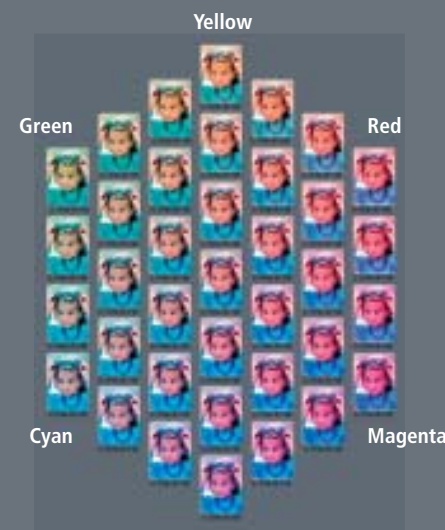
Canon's ChromaLife100 System

The PIXMA Pro9000's ChromaLife100 system combines the benefits of dye-based ink, Canon photo paper and FINE print head technology to produce long-lasting, beautiful prints. With an 8-color dye ink system, the Pro9000 produces a wide color gamut to achieve vivid coloration and high glossiness.



Easy-PhotoPrint Pro Software

The PIXMA Pro9000 can be seamlessly integrated into a computer workflow with Canon's Easy-PhotoPrint Pro software plug-in. Easy-PhotoPrint Pro augments other post-production software, including Canon's Digital Photo Professional (DPP version 2.1) and Adobe® Photoshop® CS/CS2. Using customized layout options, photographers can produce contact prints, prints with shooting information and even pattern prints of a single image reproduced with a variety of color balance, brightness and contrast settings. For even more fine-tuning of color and contrast, photographers can choose from three color adjustment features that can be saved with personal settings: Enable ICC Profile, Photo Color and Linear Tone. Easy-PhotoPrint Pro also includes grayscale printing adjustments and monochrome printing adjustments for even richer gradation.



Download from Ww.Somanuals.com. All Manuals Search And Download.

FINE Print Head Technology

The PIXMA Pro9000 features Canon's FINE technology, producing a maximum resolution of 4800 x 2400 dpi. It's high-precision, 6,144 nozzle print head is designed to provide 2-picoliter ink droplets in one pass. Capable of plotting thousands of ink droplets each second, the high-density placement of ink produces sharp details and minimal graininess with incredible precision. With Canon-engineered print head technology, photographers benefit from high speed and quality.



Wide Paper Selection

With conventional top-loading and front-loading features, the PIXMA Pro9000 can accommodate large, professional paper sizes, up to 13"x 19." Paper up to 1.2mm thick can be fed through the front-loader, opening up a world of options for print media. The PIXMA Pro9000 is compatible with Canon's Fine Art Photo Rag™ paper, specially designed with Hahnemühle, so photographers can produce art-quality prints with a distinctive texture and finish. Additionally, it works with Canon's Premium Matte and other photo paper finishes which bring life to the subtlety and power of your work.



Free Manuals Download Website

<http://myh66.com>

<http://usermanuals.us>

<http://www.somanuals.com>

<http://www.4manuals.cc>

<http://www.manual-lib.com>

<http://www.404manual.com>

<http://www.luxmanual.com>

<http://aubethermostatmanual.com>

Golf course search by state

<http://golfingnear.com>

Email search by domain

<http://emailbydomain.com>

Auto manuals search

<http://auto.somanuals.com>

TV manuals search

<http://tv.somanuals.com>