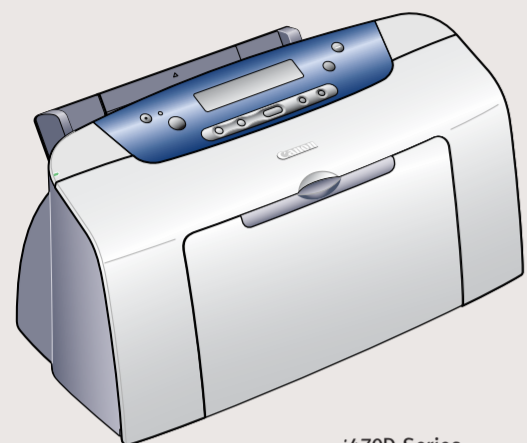
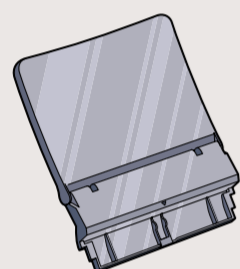


## 1 Unpack the Printer

- Carefully remove all items from the box.



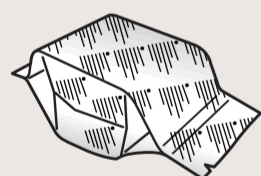
i470D Series  
Photo Printer



Paper Rest



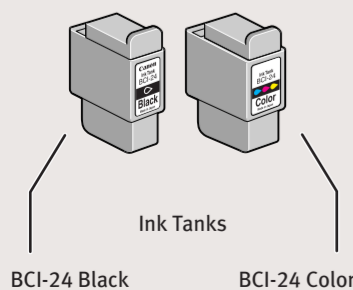
Documentation  
and Software Kit



i470D Series Print Head



Power Cord



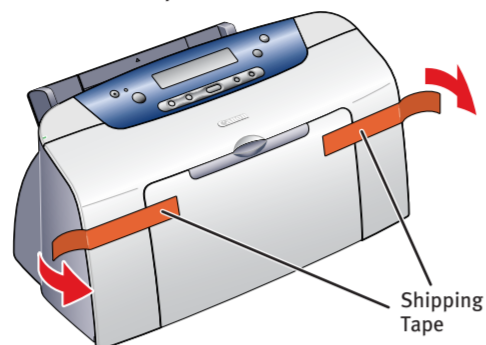
Ink Tanks

BCI-24 Black

BCI-24 Color

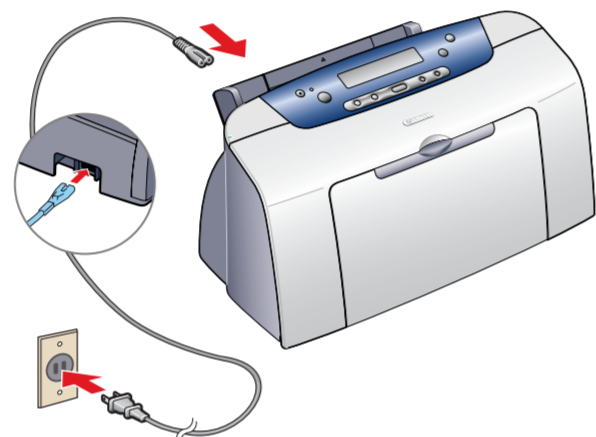
## 2 Prepare the Printer

- Remove all shipping tape from the front and sides of the printer.

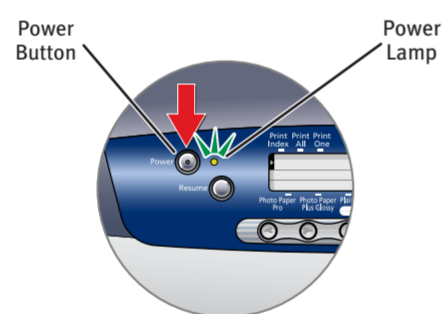


Shipping  
Tape

- Plug the power cord into the back of the printer and connect the other end to a power outlet.



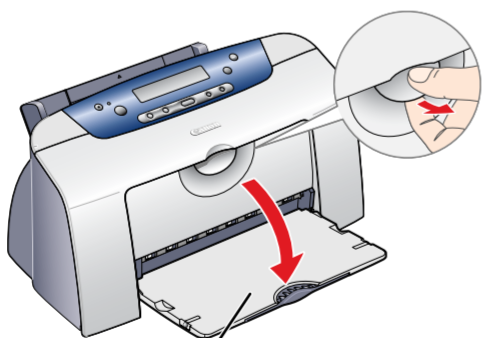
- Press the Power button.



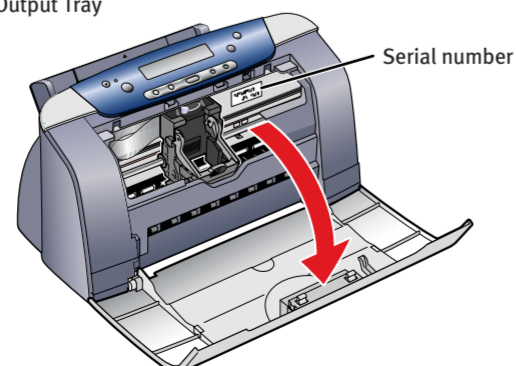
Power  
Button

Power  
Lamp

- Open the output tray, then open the front cover. The print head holder automatically moves to the center.



Output Tray

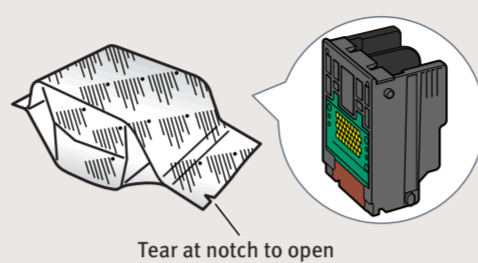


Serial number

Write down the serial number located to the right of the print head. You will need this later to register the product.

## 3 Install the Print Head

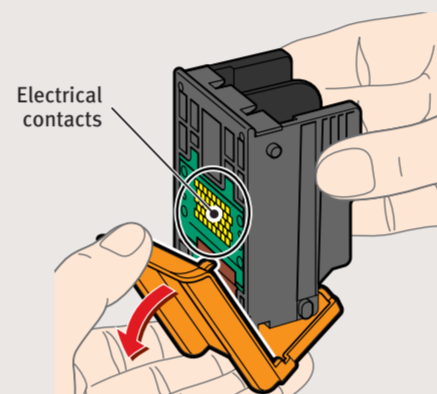
- Remove the print head from its package.



Tear at notch to open

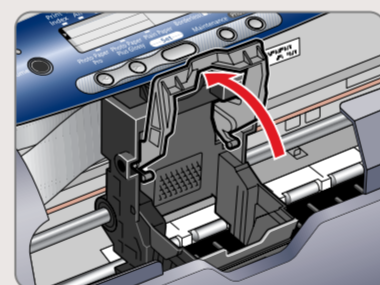
- Remove the orange protective cap.

**NOTE:** Do not touch the electrical contacts on the back and bottom of the print head.

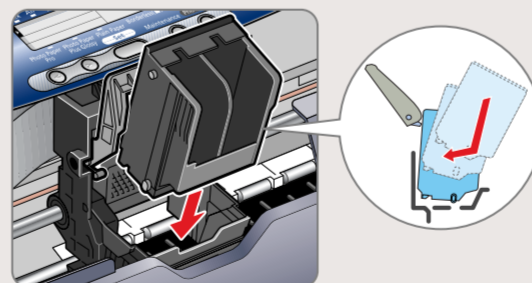


Electrical  
contacts

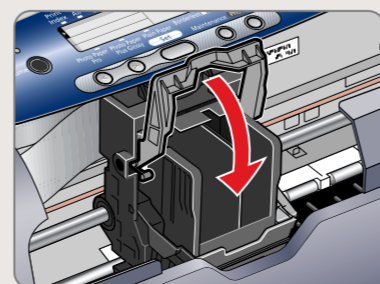
- Raise the gray lock lever on the printer.



- Slide the print head into the holder until it is securely seated. **Do not press it down.**



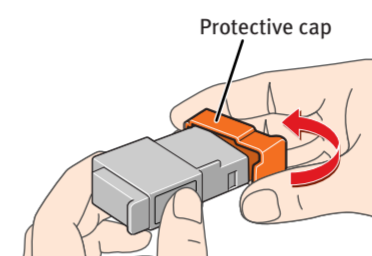
- Lower the lever until it locks into place.



## 4 Install the Ink Tanks

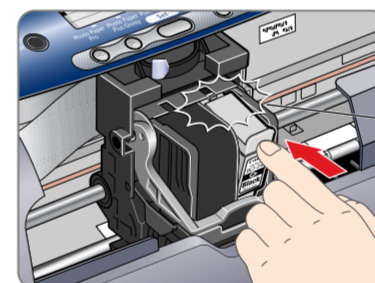
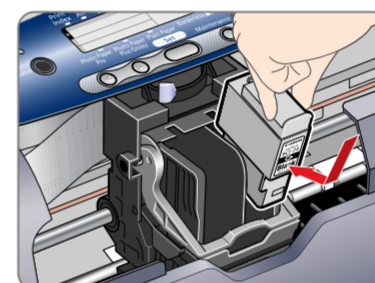
- Remove the black ink tank (BCI-24 Black) from its package and pull off the orange protective cap.

**NOTE:** To avoid spilling ink, do not touch the bottom of the tank once you have removed the protective cap.



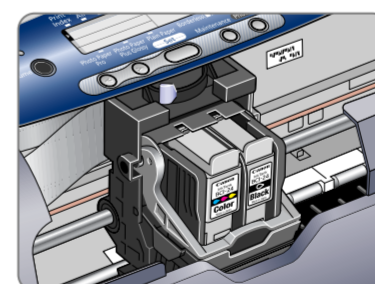
Protective cap

- Insert the black ink tank into the slot on the right, then push in until the ink tank locks into place.

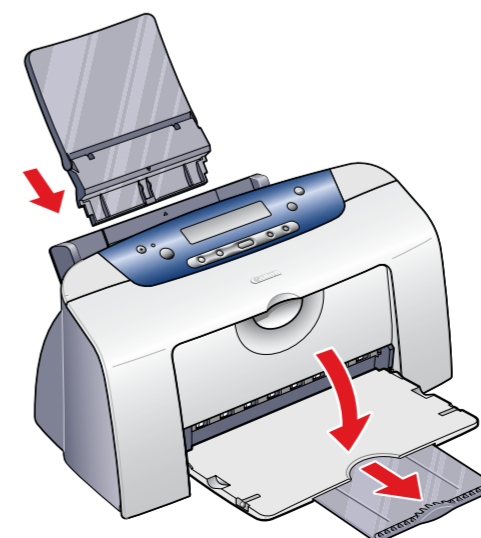


Click

- Repeat the procedure for the color ink tank (BCI-24 Color), inserting it into the remaining slot.



- Close the front cover, attach the paper rest and pull out the output tray.

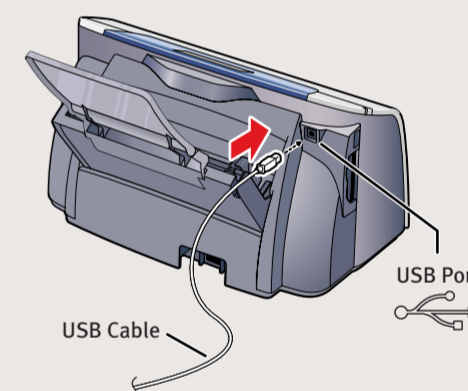
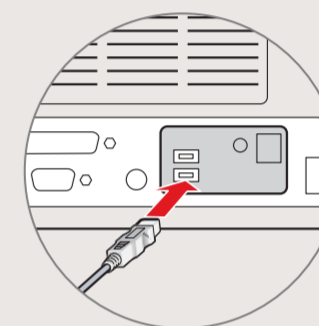


## 5 Connect the Printer To Your Computer

- Turn the printer off.

**IMPORTANT:** Be sure printer is off before continuing, or the computer will attempt to install the printer driver before the printer is ready.

- Connect one end of a USB cable (not included) to the computer, the other to the printer.



USB Cable

USB Port

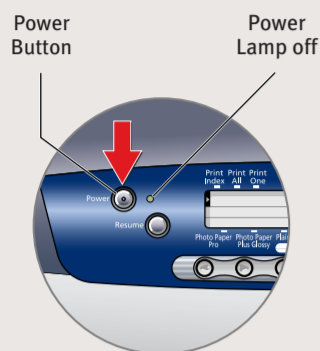
Continue with Step 6 on side two.





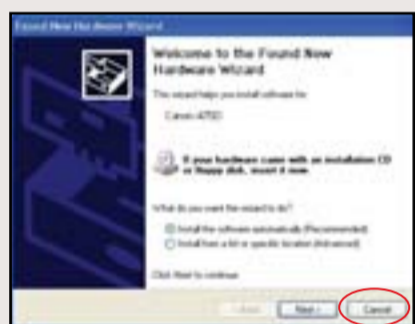
## 6 Install the Printer Driver (Windows®)

- 1 Be sure to **TURN THE PRINTER OFF.**



**NOTE:** For Windows® XP or Windows 2000, log on to Windows as an Administrator before continuing.

**IMPORTANT:** If you see the Found New Hardware Wizard, click **Cancel**.



- 2 Close any open software applications, then insert the “i470D Setup Software & User’s Guide” CD-ROM. The setup program should run automatically.

**NOTE:** If the setup program does not run, click **Start**, then **Run**, then type **D:\msetup.exe**, where **D** is your CD-ROM drive.

- 3 Read the License Agreement, then click **Yes** to continue.

- 4 When the main menu appears, click **Install**.



- 5 When the Printer Port window appears, **TURN THE PRINTER ON** so the printer port (connection) can be automatically detected.



- 6 When the Terminate Installation window appears, click **OK**.

**NOTE:** Remember to register your product. The serial number is located on the inside of the printer, to the right of the print head.

- 7 When the Other Driver screen appears, click **Install**. Then follow the on-screen instructions.



Click **OK** when the Terminate Installation window appears.

- 8 When the software screen appears, click **Install**.



- 9 When the Terminate Installation window appears, click **OK**, then **Exit**.

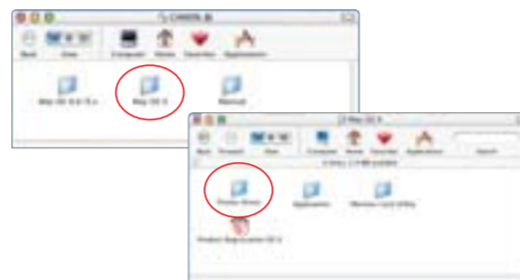
- 10 Click **Yes** if you are prompted to restart your computer

**IMPORTANT:** To ensure highest quality output, continue with **Step 7 Align the Print Head**.

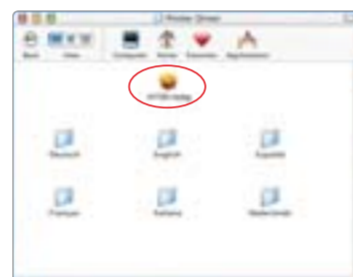
## 6 Install the Printer Driver (Macintosh®)

- 1 Turn on your Mac and your printer and insert the “i470D Setup Software & User’s Guide” CD-ROM.

- 2 Double-click the CD-ROM icon, then the **Mac OS X** folder, then the **Printer Driver** folder.



- 3 Double-click the **i470D.mpkg** icon.



- 4 When the “Authenticate” screen appears, enter your administrator name and password, then click **OK**.

- 5 When the “Welcome to the BJ printer driver Installer” screen appears, click **Continue**.

- 6 Read the Software License Agreement and click **Continue**, then click **Agree**.

- 7 Select a destination for the printer driver to be installed. Then click **Continue**.



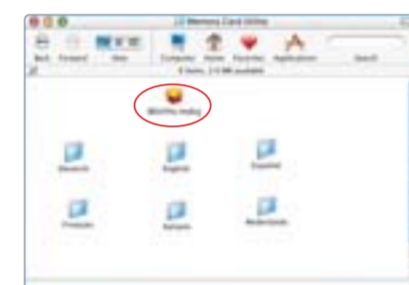
- 8 Click **Install**. When a message asking for your confirmation to proceed with the installation, click **Continue Installation**.



- 9 When the message “The software was successfully installed” appears, click **Restart**.

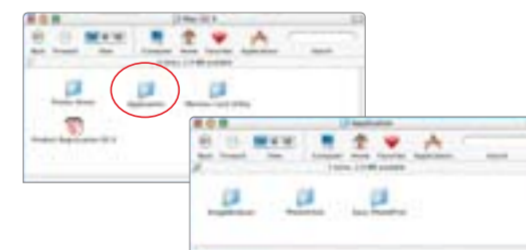
- 10 Access your CD-ROM again. Double-click the **Mac OS X** folder, then the **Memory Card Utility** folder.

- 11 Double-click the **BJUtility.mpkg** icon.



- 12 Follow the on-screen instructions. If you’re prompted to restart your computer after the installation, restart your computer.

- 13 Access your CD-ROM again. From the Application folder, double-click on the software to be installed.



- 14 Follow the on-screen instructions. When the “Installation has finished” screen appears, click **OK**.

**NOTE:** Be sure to register your product. The serial number is located on the inside of the printer, to the right of the print head.

**IMPORTANT:** To ensure highest quality output, continue with **Step 7 Align the Print Head**.

## 7 Align the Print Head

- 1 Place a sheet of blank paper in the paper rest.

- 2 Start the alignment procedure.

**Windows:**

- a. For Windows XP/2000, click **Start**, select **Control Panel, Printers and Other Hardware**, then **Printers and Faxes**.

- b. Right-click the **Canon i470D** icon, then click **Printing Preferences**.

**NOTE:** For Windows 98/Me, click **Start, Settings**, then **Printers**. Right-click the **Canon i470D** icon, then click **Properties**.

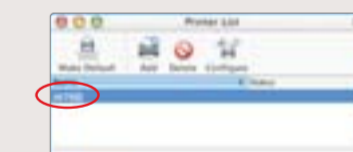
- c. Click the **Maintenance** tab, then click the **Print Head Alignment** icon.



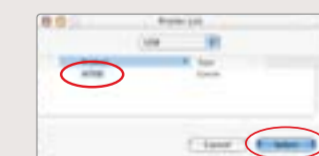
- d. When asked to start print head alignment, click **OK**.

**Macintosh OS X:**

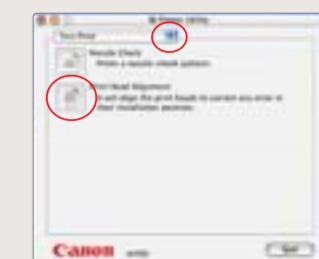
- a. Double-click the **Macintosh HD** icon, then **Applications** folder. Double-click the **Utilities** folder, then the **Print Center** icon. When the Printer List screen appears, select **i470D**.



Under Printers menu, select **Configure Printer**. Select **i470D**, and click **Select**.



- b. Click the down-arrow to select **Test Print**.
- c. Click the **Print Head Alignment** icon.



- 3 Follow the on-screen instructions.

- 4 Click **OK** (Windows) or **Send** (Macintosh) when finished.

## Free Manuals Download Website

<http://myh66.com>

<http://usermanuals.us>

<http://www.somanuals.com>

<http://www.4manuals.cc>

<http://www.manual-lib.com>

<http://www.404manual.com>

<http://www.luxmanual.com>

<http://aubethermostatmanual.com>

Golf course search by state

<http://golfingnear.com>

Email search by domain

<http://emailbydomain.com>

Auto manuals search

<http://auto.somanuals.com>

TV manuals search

<http://tv.somanuals.com>