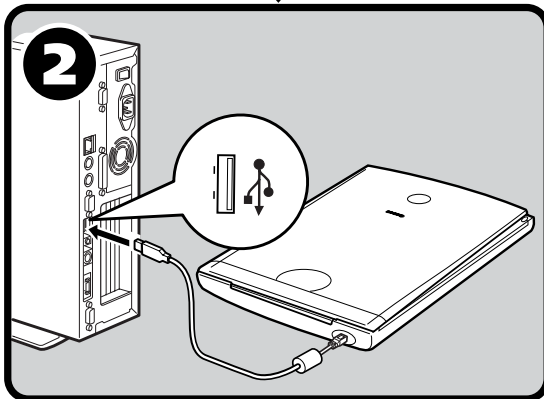
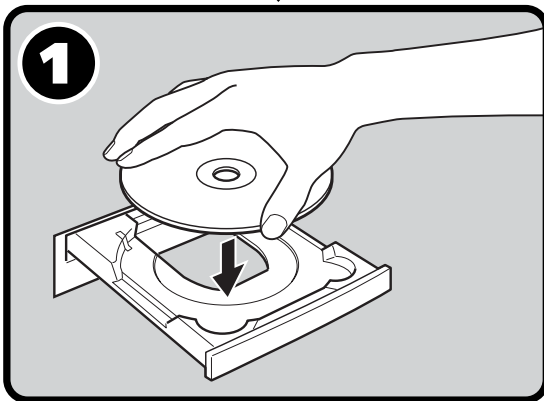


## CanoScan LiDE 50

# Quick Start Guide

Be sure to install the software programs before connecting the scanner to the computer!



### Setup and Scanning

Check the Package Contents ..... p.2

1 Install the Software

Windows ..... p.3

Macintosh ..... p.4

Unlock the Scanning Unit ..... p.5

2 Connect the Scanner ..... p.6

Try Scanning ..... p.7

### Try the Additional Features

● Using the Scanner Buttons ..... p.10

● Using the Scanner in the Upright Position ..... p.11

## Color Image Scanner Models F916900: (CanoScan LiDE 50)

This device complies with Part 15 of the FCC Rules. Operation is subject to the following two conditions: (1) This device may not cause harmful interference, and (2) this device must accept any interference received, including interference that may cause undesired operation.

Note: This equipment has been tested and found to comply with the limits for class B digital device, pursuant to Part 15 of the FCC Rules. These limits are designed to provide reasonable protection against harmful interference in a residential installation. This equipment generates, uses and can radiate radio frequency energy and, if not installed and used in accordance with the instructions, may cause harmful interference to radio communications. However, there is no guarantee that interference will not occur in a particular installation. If this equipment does cause harmful interference to radio or television reception, which can be determined by turning the equipment off and on, the user is encouraged to try to correct the interference by one or more of the following measures:

- Reorient or relocate the receiving antenna.
- Increase the separation between the equipment and receiver.
- Connect the equipment into an outlet on a circuit different from that to which the receiver is connected.
- Consult the dealer or an experienced radio/TV technician for help.

Use of shielded cable with the ferrite core provided with the scanner is required to comply with Class B limits Subpart B of Part 15 of the FCC rules.

Do not make any changes or modifications to the equipment unless otherwise specified in the manual. If such changes or modifications should be made, you could be required to stop operation of the equipment.

Canon U.S.A. Inc.  
One Canon Plaza, Lake Success, NY 11042, U.S.A  
Tel No.(516)-328-5600

The socket-outlet shall be installed near the equipment and shall be easily accessible.

Use of a shielded cable with the ferrite core(s) provided with the scanner is necessary to comply with the technical requirements of the EMC Directive.

## Warning

When you use this product, you should pay attention to the following legal issues:

- Scanning of certain documents, such as bank notes (bank bills), government bonds and public certificates, may be prohibited by law and may result in criminal and/or civil liability.
- You may be required under law to obtain authorization from a person possessing copyrights or other legal rights to the item being scanned.

If you are uncertain of the legality of scanning any particular item, you should consult your legal adviser in advance.

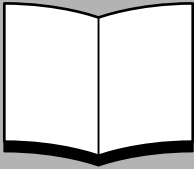
- CanoScan and ScanGear are trademarks of Canon Inc.
- Adobe®, Acrobat® and Photoshop® are trademarks of Adobe Systems Incorporated.
- Microsoft and Windows are registered trademarks of Microsoft Corporation in the U.S. and other countries.
- Macintosh, Power Macintosh and Mac OS are trademarks of Apple Computer, Inc., registered in the U.S. and other countries.
- ScanSoft and OmniPage are trademarks of ScanSoft, Inc.
- Other names and products not mentioned above may be trademarks or registered trademarks of their respective companies.

In this guide, Windows XP screen shots are used to illustrate explanations common to all operating systems.

# Guide to the Manuals

---

## Open the Package



### Quick Start Guide (this guide)

This guide describes a series of processes, from opening the package to using the scanner.

**READ THIS GUIDE FIRST!**



**HTML**

### Scanning Guide (HTML format manual)

Refer to this guide when you have finished setting up the scanner according to the procedures in the *Quick Start Guide*. It describes how to utilize the scanner with the bundled software, and how to solve problems when they occur. You can install this manual onto the hard disk together with the software programs. When you install it, the *Scanning Guide* icon will appear on the desktop. Double-click the icon to view it with a browser program, such as Internet Explorer.



**PDF**

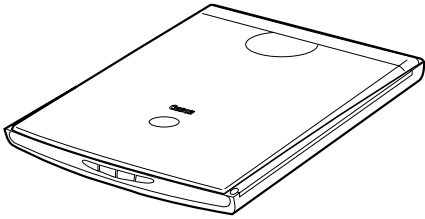
### User's Guides for Application Programs (PDF format manuals)

- ArcSoft PhotoStudio
- ArcSoft PhotoBase
- OmniPage SE
- Presto! PageManager (Windows only)

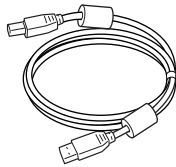
Select the "View the Electronic Manuals" menu on the CanoScan Setup Utility CD-ROM. To read these manuals, Adobe Acrobat Reader should be installed on your computer.

# Check the Package Contents

## Scanner and Accessories



Scanner



USB Interface Cable

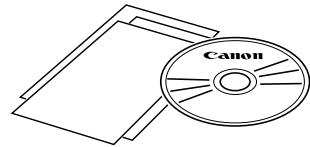


Stand

➔ Page 11

## Documents and Software Programs

- Quick Start Guide (this guide)
- Additional Documents
- CanoScan Setup Utility CD-ROM



- The two figures in the brackets below indicate the respective sizes of the Windows/ Macintosh versions of the software.
- Approximately 479 MB (for Windows) / 189 MB (for Macintosh) of hard disk space on your computer is required to install all the programs. Additional free hard disk space is required to operate the programs.

### ScanGear CS (25 MB / 5 MB) - Scanner Driver

It allows you to scan and load images from the scanner.

### CanoScan Toolbox (5 MB / 3 MB) - Scanning Utility Program

It enables you to scan images and copy (print), attach images to e-mail messages or save images with simple steps. It also works with the scanner buttons.

### ArcSoft PhotoStudio (30 MB / 19 MB) - Image Editing Program

It allows you to load images from the scanner, edit and retouch them, and apply special effects and enhancements.

### ArcSoft PhotoBase (75 MB / 5 MB) - Photo Album Program

It allows you to create and edit image albums, perform image searches and create slide shows.

### ScanSoft OmniPage SE (65 MB / 48 MB) - OCR (Optical Character Recognition) Program

It converts characters scanned from a book, magazine or newspaper into text data for editing or digital transmission.

### Presto! PageManager (Windows only) (150 MB) - Digital Document Management Program

It makes it easy to scan, share and organize documents and photos. It automatically links to other popular programs and avoids file-sharing problems by creating self-executable files.

### Adobe Acrobat Reader (24 MB / 24 MB) - PDF File Reader Program

Electronic manuals for the above software programs (HTML (5 MB) and PDF manuals)

- **Adobe Photoshop Elements CD-ROM**

### Adobe Photoshop Elements (100 MB / 80 MB) - Image Editing Program

It loads images from the scanner and allows you to edit and retouch them or apply special effects and enhancements. Please read the instruction sheet or electronic (PDF) manual for Adobe Photoshop Elements.

# Install the Software (Windows)



- With Windows XP/2000, you should log on with an administrator user name when you install or uninstall software programs.

## 1 Turn the computer on.

If the "Found New Hardware Wizard" or "Add New Hardware Wizard" appears, click [Cancel].

## 2 Place the CanoScan Setup Utility CD-ROM in the drive. The CanoScan Setup Utility main menu will display.

## 3 Click [Install the Software].

Read the SOFTWARE USER LICENSE AGREEMENT. Click [Yes] if you accept the terms.

The [Install] window will display.

## 4 Click [Start Installation].

You will install seven software programs and the Scanning Guide (HTML format manual).

## 5 The installation procedure will start.

Follow the on-screen message prompts and click [Yes] or [Next] to continue the installation.



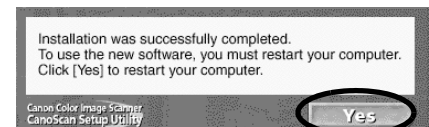
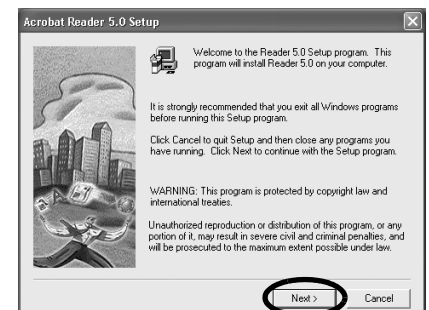
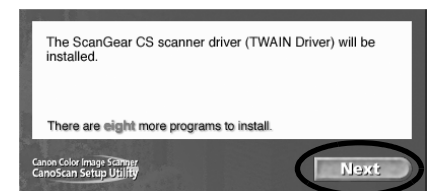
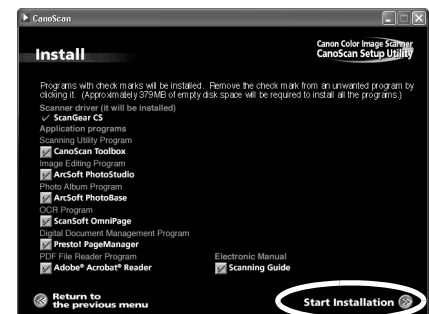
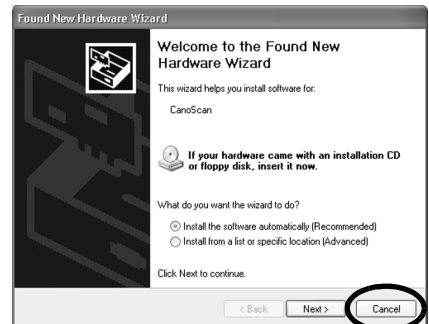
- In few cases, your operating system may require a restart. Follow the on-screen messages to restart and resume installation.

## 6 When the installation is complete, click [Yes].

The computer will restart.

## 7 After Windows restarts, remove the CD-ROM from the drive and store it in a safe place.

➔ Continue on P. 5.



# Install the Software (Macintosh)

**1** Turn the computer on.

If the "...Would you like to look for the software on the Internet?" appears, click [Cancel].

**2** Place the CanoScan Setup Utility CD-ROM in the drive.

The CanoScan Setup Utility main menu will display.

If no window displays, double-click the CD-ROM icon, then the Setup icon.

**3** Click [Install the Software].

Read the SOFTWARE USER LICENSE AGREEMENT. Click [Yes] if you accept the terms.

The [Install] window will display.

**4** Click [Start Installation].

You will install six software programs and the Scanning Guide (HTML format manual).

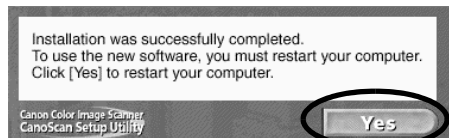
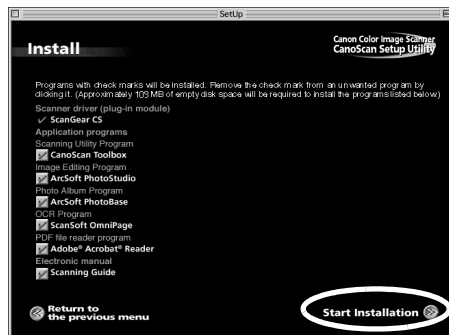
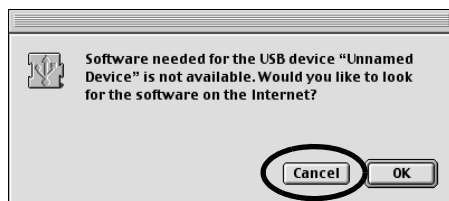
**5** The installation procedure will start.

Follow the on-screen message prompts and click [Yes], [Next] or [Install] to continue the installation.

**6** When the installation is complete, click [Yes].

The computer will restart.

**7** After restarting, remove the CD-ROM from the drive and store it in a safe place.

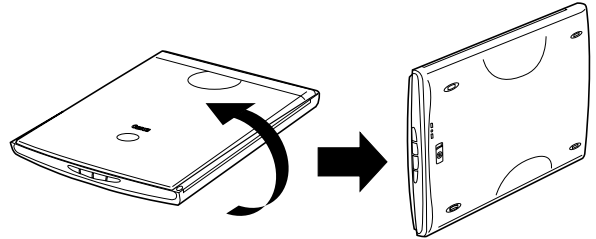


# Unlock the Scanning Unit

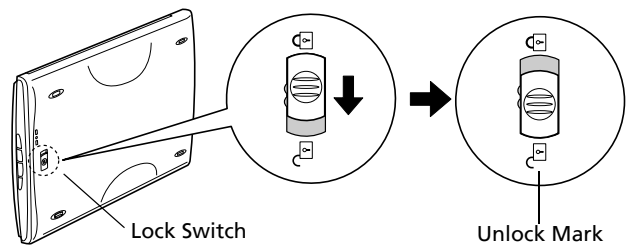


- Unlock the scanning unit before connecting the scanner to the computer. If it is left locked, a malfunction or other problem may occur.

- 1 Peel the caution seal from the front of the scanner.
- 2 Gently turn the scanner over.



- 3 Push the lock switch toward the unlock mark (🔓).



- 4 Return the scanner to a horizontal position.



- When transporting the scanner, always lock the scanning unit by pushing the lock switch toward the lock mark (🔒).
- Carrying or transporting the scanner without locking the scanning unit may damage it. Be particularly careful to lock the scanning unit when transporting the scanner in a vehicle.

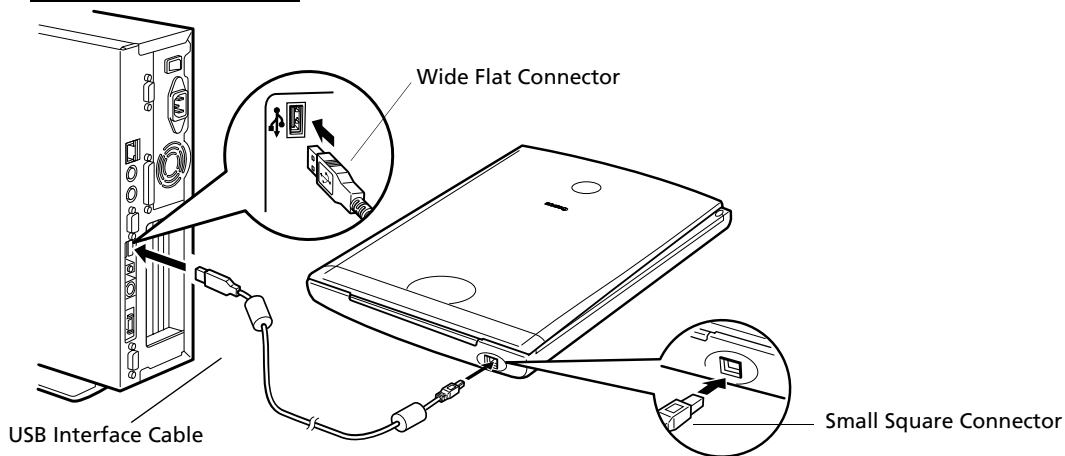
# Connect the Scanner



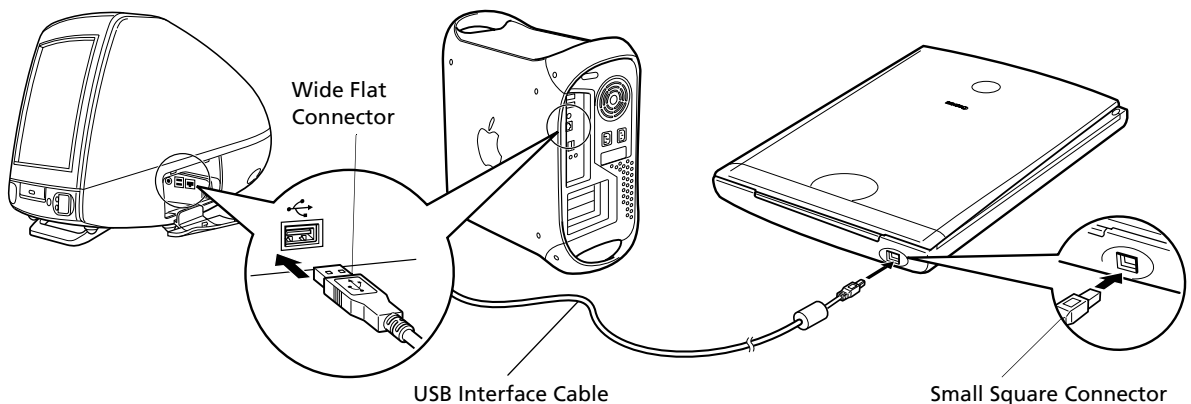
- Confirm that the scanning unit is unlocked. (P.5)

- 1 Peel the caution seal from the back of the scanner.
- 2 Connect the scanner to the computer with the supplied USB interface cable.

## Windows



## Macintosh



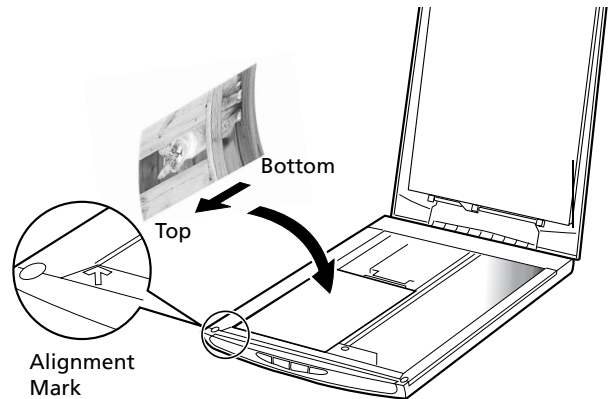
- Only use the USB interface cable provided with the scanner. Use of other cables may lead to a malfunction.
- The scanner does not have a power switch. The power is activated as soon as the computer is turned on.



# Try Scanning

The following steps explain how to scan with ArcSoft PhotoStudio.

- 1 Place a photo or a picture on the glass by aligning its top edge with the alignment mark, and close the document cover.



## Windows

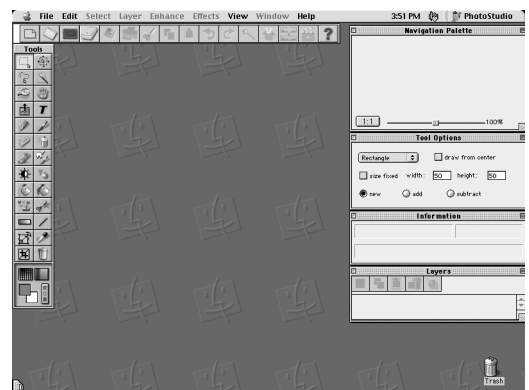
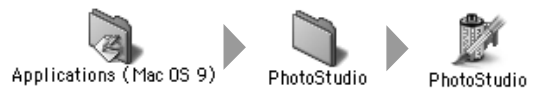
- 2 Select [Start], [Programs] or [All Programs], [ArcSoft PhotoStudio] and [PhotoStudio 5].



PhotoStudio will start.

## Macintosh


- 2 Double-click the [Applications (Mac OS 9)] and [PhotoStudio] folder and the [PhotoStudio] icon.



PhotoStudio will start.

# Try Scanning

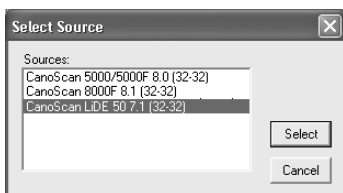
## Windows

- 3** Click the Acquire icon  or click the [File] menu and select [Acquire].



ScanGear CS will start.

If an error message appears, click the [File] menu, choose [Select Source], select your scanner model name and click the [Select] button.



- 4** Select "Type of original".

You can select "Photo", "Magazine", "Newspaper" or "Document".

- Photo: Color, 300 dpi
- Magazine: Color, 150 dpi
- Newspaper: Black and White, 300 dpi
- Document: Grayscale, 300 dpi


- 5** Click [Preview].

After calibration, the preview scan will start and gradually display the image.

The image is automatically cropped at its original size.

If you want to trim the image further, drag the mouse diagonally to select the area.

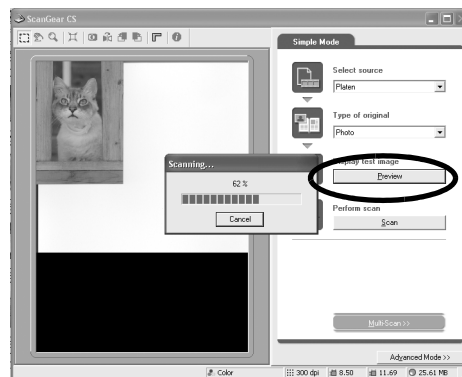
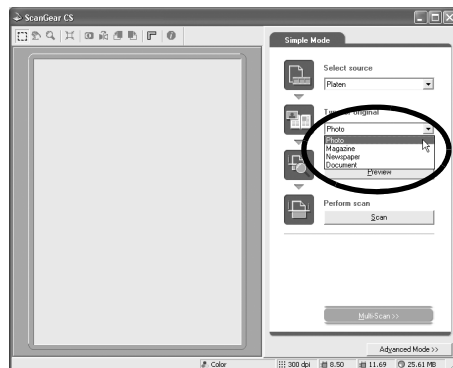
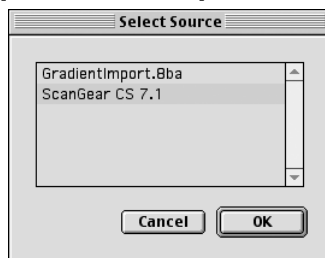
## Macintosh

- 3** Click the Acquire icon  or click the [File] menu and select [Import...].

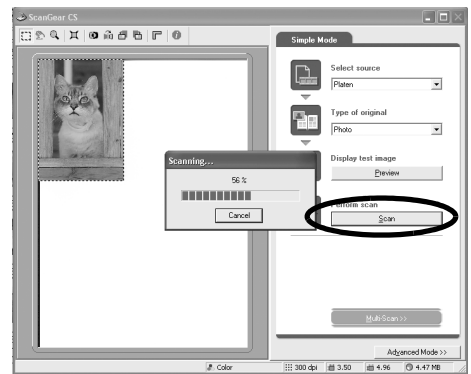




ScanGear CS will start.

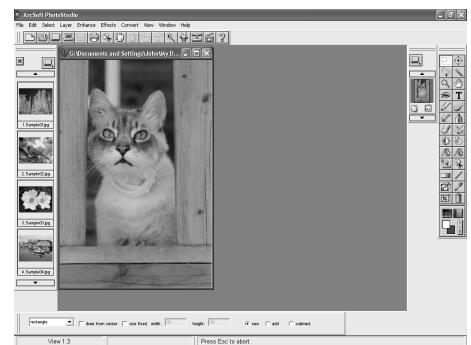
When the [Select Source] dialog displays, select [ScanGear CS 7.1] and click the [OK] button.





- 6** Click [Scan].  
The final scan will start.

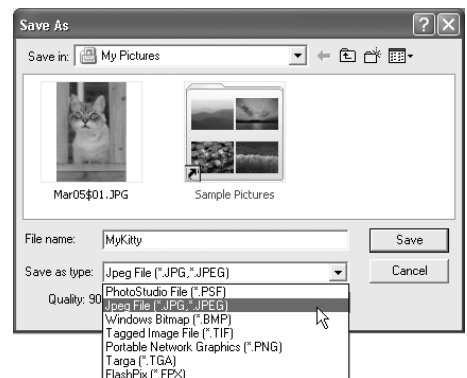


- 7** Click  or  (close box) in the ScanGear CS window to close it.  
The scanned image will appear in the PhotoStudio window.



- 8** Save the scanned image.  
Click the [File] menu and select [Save As]. Select the folder where you wish to store the image file, enter a file name, select a file type (JPG format is recommended) and click [Save].

- 9** Click  or  (close box) in the PhotoStudio window to close it.



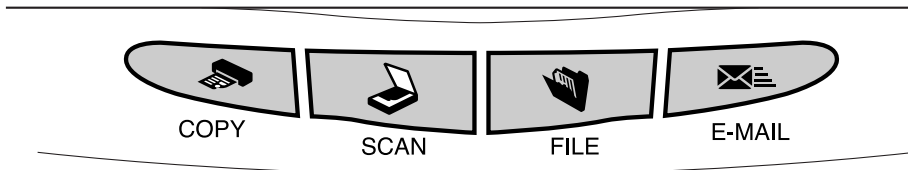
- If the scanner does not perform as described above, read the "Troubleshooting" section of the Scanning Guide.
- For details about the bundled software, read the Scanning Guide or the User's Guide (PDF format manual) for each software program on the CanoScan Setup Utility CD-ROM.

# Using the Scanner Buttons

You can use the four convenient buttons on the front of the scanner to scan and perform related tasks easily with a single touch of the button. Place an item on the scanner before pressing a button.



- To use these buttons, ScanGear CS, CanoScan Toolbox, ArcSoft PhotoBase and Presto! PageManager (Windows) / Acrobat Reader (Macintosh) should be installed from the CanoScan Setup Utility CD-ROM.



## COPY Button

To print (copy) the scanned image with a printer:

- 1 Press the [COPY] button.
- 2 The scanner will scan the item.
- 3 The scanned image will print.

- The printer driver should be installed and the printer should be on-line to use this function.



## SCAN Button

To open the scanned image in the PhotoBase window:

- 1 Press the [SCAN] button.
- 2 The scanner will scan the item.
- 3 The scanned image will appear in the PhotoBase window.



## FILE Button

To save the scanned image as a PDF file:

- 1 Press the [FILE] button.
- 2 The scanner will scan the item.
- 3 The scanned image will be saved as a PDF document and appear in Presto! PageManager (Windows) or Adobe Acrobat Reader (Macintosh).



## E-MAIL Button

To e-mail the scanned image as an attached file:

- 1 Press the [E-MAIL] button.
- 2 The scanner will scan the item.
- 3 The [E-mail software selection] dialog will appear. Select an option from the list and click [OK].  
This step is required only for the first scan.
- 4 The e-mail software will start and the scanned image will be attached in a new message window.
- 5 Enter the receiver's address and title, write a message, confirm the required settings, and send the message.

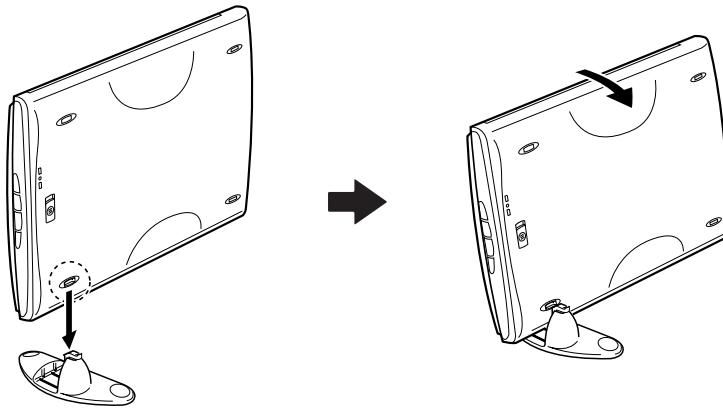
- The e-mail software, such as Outlook Express, Microsoft Outlook, Eudora or Netscape Messenger, should be installed and enabled. With certain e-mail programs, you should enable the MAPI function (for Windows).



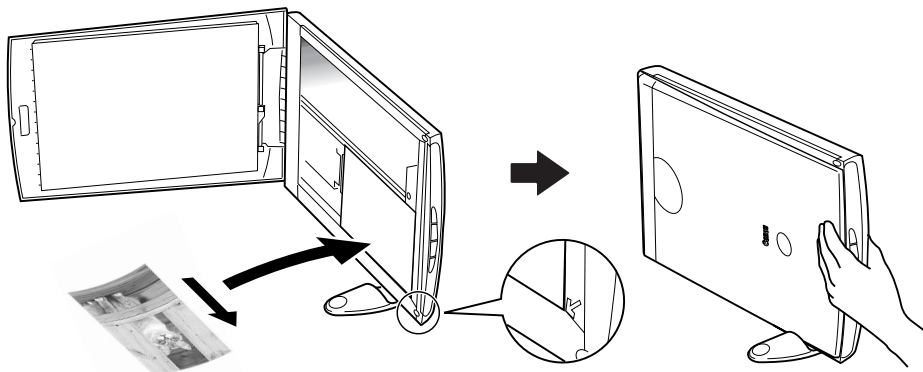
- While scanning, you can change the default settings for scanning by clicking the [Cancel] button. For changing settings or arranging the scanner button assignments, refer to the CanoScan Toolbox section of the *Scanning Guide* (HTML format manual).

# Using the Scanner in the Upright Position

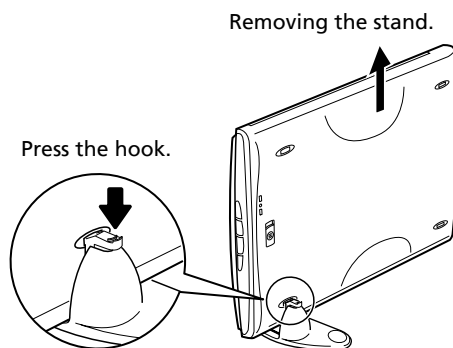
## Installing the Stand



## Positioning an Item



## Removing the Stand



# System Information

---

This form should be used to record the operating environment for the purchased scanner. If any problems occur with the scanner, you will need this information when you contact our Customer Support Help Desk. Be sure to record the information and store it in a safe location.

- This information is also required to request a repair under warranty. Make sure you record the information and store it in a safe location.
- Guaranteed servicing for this equipment will expire five years after production ceases.

Date of Purchase:

---

Dealer Tel:

---

Dealer Address:

---

Scanner Model:           CanoScan LiDE 50

---

Serial Number (on the back of the equipment):

---

## • About the Computer Used

Manufacturer:

---

Model:

---

CPU:

---

Clock Speed:

---

MHz

Memory Capacity (RAM):

---

MB

Hard Disk Capacity:

---

MB

Space Available:

---

MB

OS:   Windows    XP    Me    2000    98

---

          Macintosh    OS 9.0    OS 9.1    OS 9.2    OS X v10.1

---

Monitor Type:

---

Monitor Size:

---

inches

Printer:

---

Manufacturer:

---

Type of Printer:

---

Printer Resolutions:

---

Installed Virus Protection Program:

---

Installed Compression Program:

---

On-Board Expansion Cards:

---

Attached Peripherals:

---

Connected Network System:

---

# Specifications

		<b>CanoScan LiDE 50</b>
<b>Scanner Type</b>		Flatbed
<b>Scanning Element</b>		CIS (Contact Image Sensor)
<b>Light Source</b>		3-color (RGB) LED
<b>Optical Resolution</b>		1200 x 2400 dpi
<b>Selectable Resolution</b>		25 - 9600 dpi (ScanGear CS)
<b>Scanning Bit Depth</b>	<b>Color</b>	16 bit input / 16 bit or 8 bit output for each color (RGB)
	<b>Grayscale</b>	16 bit input / 8 bit output
<b>Scanning Speed*<sup>1</sup> (Photo or Document)</b>	<b>Color</b>	6.4 msec./line (600 dpi), 12.7 msec./line (1200 dpi)
	<b>Grayscale, B&amp;W</b>	3.1 msec./line (600 dpi), 4.2 msec./line (1200 dpi)
<b>Preview Speed*<sup>2</sup></b>		Approximately 9 sec.
<b>Interface</b>		USB 2.0 Hi-Speed, USB 2.0 Full Speed (USB 1.1 equivalent)
<b>Maximum Document Size</b>		A4/Letter: 216 x 297 mm (8.5 x 11.7 in.)
<b>Scanner Buttons</b>		4 buttons: COPY, SCAN, FILE, E-MAIL
<b>Operating Range</b>	<b>Temperature</b>	5°C to 35°C (41°F to 95°F)
	<b>Humidity</b>	10% to 90% RH (without condensation formation)
<b>Power Requirements</b>		Supplied via USB port
<b>Power Consumption</b>		In operation: 2.5 watts maximum, Stand-by: 1.5 watts
<b>Maximum Exterior Dimensions</b>		258 x 374 x 38 mm (10.1 x 14.7 x 1.5 in.)
<b>Weight</b>		Approximately 1.8 kg (4.0 lbs.)

\*<sup>1</sup> USB 2.0 Hi-Speed mode. Transfer time to computer is not included.

\*<sup>2</sup> Calibration processing time is not included.

- Specifications are subject to change without notice.



- Before you upgrade to Windows XP from Windows 98/Me/2000, you must uninstall ScanGear CS and CanoScan Toolbox using the "Uninstall the Software" menu of the CanoScan Setup Utility CD-ROM. The scanner may not work if you upgrade to Windows XP with these programs still installed. After upgrading to Windows XP, reinstall ScanGear CS and CanoScan Toolbox according to the steps on page 3. For details, please read the "Troubleshooting" section of the *Scanning Guide* (HTML format manual).

**CANON INC.**

30-2, Shimomaruko 3-chome, Ohta-ku  
Tokyo 146-8501, Japan

**CANON U.S.A., INC.**

Digital Home and Personal Systems Division  
2995 Redhill Avenue, Costa Mesa, CA 92626, U.S.A.  
**Customer Care Center:** 1-757-413-2848  
<http://www.usa.canon.com/consumer>

**CANON CANADA INC.**

6390 Dixie Road, Mississauga, Ontario L5T 1P7, Canada  
1-800-OK CANON  
<http://www.canon.ca>

**CANON LATIN AMERICA, INC.**

703 Waterford Way, Suite 400  
Miami, Florida 33126, U.S.A.

**CANON MEXICANA, S. de R.L. de C.V.**

Anillo Periferico Sur No. 4124, Torre Zafiro (II) Colonia  
Ex-Rancho de Anzaldo, Piso 5 y 6, Mexico D.F.  
Tel. (525) 5490-2000

**CANON PANAMA, S.A.**

Apartado 7022, Panama 5, Rep. de Panama  
Tel. (507) 279-8900

**CANON CHILE, S.A.**

Ave. Manquehue Norte #1337, Piso 3, Casilla 187-9  
Santiago, Chile  
Tel. (562) 366-6600

**CANON ARGENTINA, S.A.**

Ave. Corrientes 420 (1043)  
Buenos Aires, Argentina  
Tel. (5411) 432-59800

**CANON EUROPA N.V.**

P.O. Box 2262 1180 EG Amstelveen, The Netherlands

**CANON (UK) LTD.**

Woodhatch, Reigate, Surrey RH2 8BF, United Kingdom  
For technical support, please contact Canon Helpdesk.  
**Helpdesk:**  
P.O. Box 431, Wallington, Surrey SM6 0XU  
Tel: (08705) 143 723 (Calls may be recorded)  
Fax: (08705) 143 340  
For sales enquiries: (0121) 666-6262

**CANON COMMUNICATION & IMAGE FRANCE S.A.**

102 Avenue du Général de Gaulle  
92257 LA GARENNE COLOMBES CEDEX, France  
Tel: 01.41.30.15.15 Fax: 01.41.30.15.05  
<http://www.canon.fr>

**CANON DEUTSCHLAND GmbH**

Postfach 528, 47705 Krefeld, Germany  
**CANON- Hotline-Service**  
Customer Support: (0 21 51) 349-555  
Info-Desk: (0 21 51) 349-566  
Telefax: (0 21 51) 349-588

**CANON ITALIA S.p.A**

Palazzo L, Strada 6, 20089 Milanofiori-Rozzano (MI), Italy  
Tel: 02/8248.1 Fax: 02/8248.4600  
Pronto Canon 02/8249.2000  
<http://www.canon.it>

**CANON NEDERLAND N.V.**

Neptunusstraat 1, 2132 JA Hoofddorp, The Netherlands  
Tel: 023-5 670 123 Fax: 023-5 670 124  
**Helpdesk:** 023-5 681 681  
<http://www.canon.nl>

**CANON BELGIUM N.V./S.A.**

Bessenveldstraat 7, 1831 Diegem, Belgium  
Tel: 02 7220411 Fax: 02 7213274  
**Helpdesk:** 02 7220404  
<http://www.canon.be>

**CANON GmbH**

Zetschegasse 11, 1230 Wien, Austria  
<http://www.canon.at>

**CANON (SCHWEIZ) A.G.**

Industriestrasse 12, 8305 Dietlikon, Switzerland  
Tel: (01) 835 61 61 Fax: (01) 835 68 85  
**Hotline:** 157 30 20  
<http://www.canon.ch>

**CANON ESPAÑA S.A.**

C/loaquin Costa No 41, 28002, Madrid, Spain  
**Help Desk:** 906.301255  
Tel.: 91-538 4500 Fax.: 91-411 4176

**CANON DANMARK**

Vasekær 12, DK-2730 Herlev, Denmark  
**Hotline:** 44 88 26 66  
<http://www.canon.dk>

**CANON NORGE AS**

Hallangerbakken 110, Boks 33, Holmlia, 1210 Oslo 12, Norway  
Tlf: 2262 9321 Faks: 2262 0615  
<http://www.canon.no>

**CANON SVENSKA AB**

Gustav III:s Boulevard 26, S-169 88 Solna, Sweden  
**Support-Under garantitiden:** Tel. 08-744 86 20  
**Support-Efter garantitiden:** Tel. 0900-20 30 555  
E-post support: [anvandar.klubben@canon.se](mailto:anvandar.klubben@canon.se)  
<http://www.canon.se>

**CANON OY AB**

Kometintie, 3, 00380 Helsinki, Finland  
Puhelin: 010 54420 Fax: 010 544 4571  
**Helpdesk:** 0600 0 22606 (9,95 mk/min+pvm)  
**Helpdesk:** 0600 0 22666 (enint. 40 mk/puhelu+pvm)  
Sähköposti: [helpdesk@canon.fi](mailto:helpdesk@canon.fi)  
Internet: [www.canon.fi](http://www.canon.fi)

**CANON SINGAPORE PTE. LTD.**

79 Anson Road #09-01/06, Singapore 079906  
<http://www.canon-asia.com>

**CANON MARKETING SERVICES PTE. LTD.**

No. 1, Jalan Kilang Timor, #09-00 Pacific Tech Centre, Singapore, 159303  
Tel: 65-7998888, Fax: 65-2736786  
**Hotline:** 65-3342726  
<http://www.canon.com.sg>

**CANON MARKETING (MALAYSIA) SDN. BHD.**

Block D, Peremba Square  
Saujana Resort, Section U2, 40150 Shah Alam, Selangor Darul Ehsan  
Malaysia  
Tel: 603-7446000, Fax: 603-7446048  
**Helpdesk:** 603-7446008/9  
Enquiry: [print&scan@canon.com.my](mailto:print&scan@canon.com.my)  
<http://www.canon.com.my>

**CANON MARKETING (THAILAND) CO. LTD.**

179/34-45 Bangkok City Tower, 9th-10th Floor  
South Sathorn Road, Thungmahamek  
Sathorn, Bangkok 10120, Thailand  
Tel: 662-3449999, Fax: 662-3449968  
<http://www.canon.co.th>

**CANON MARKETING (PHILIPPINES) INC.**

Marvin Plaza Building, 2153 Don Chino Rocas Ave,  
Makati City, Metro Manila, Philippines  
Tel: 632-8126047, Fax: 632-8120067/8109797

**CANON INDIA LTD.**

Neela Gagan, Mandi Road, Mehrauli, New Delhi-110030, India  
Tel: 91-11-6806572, Fax: 91-11-6807180

**CANON HONGKONG CO., LTD.**

9/F, The Hong Kong Club Building 3A, Chater Road, Central, Hong Kong  
TEL: (852) 2739 0802 FAX: (852) 2739 6428

**CANON AUSTRALIA PTY. LTD.**

1 Thomas Holt Drive, North Ryde, Sydney N.S.W. 2113, Australia  
Info-Line: (02) 9805 2864

**CANON NEW ZEALAND LTD.**

Fred Thomas Drive, Takapuna, P.O. Box 33-336, Auckland, New Zealand  
Info-Line: (09)489 0470

**ADOBE SYSTEMS INCORPORATED**

<http://www.adobe.com>

**ARCSOFT, INC.**

<http://www.arcssoft.com>

**SCANSOFT, INC.**

<http://www.scansoft.com>



## Free Manuals Download Website

<http://myh66.com>

<http://usermanuals.us>

<http://www.somanuals.com>

<http://www.4manuals.cc>

<http://www.manual-lib.com>

<http://www.404manual.com>

<http://www.luxmanual.com>

<http://aubethermostatmanual.com>

Golf course search by state

<http://golfingnear.com>

Email search by domain

<http://emailbydomain.com>

Auto manuals search

<http://auto.somanuals.com>

TV manuals search

<http://tv.somanuals.com>