



Installing Your Multifunction to Your Network for the First Time

PIXMA MG3520

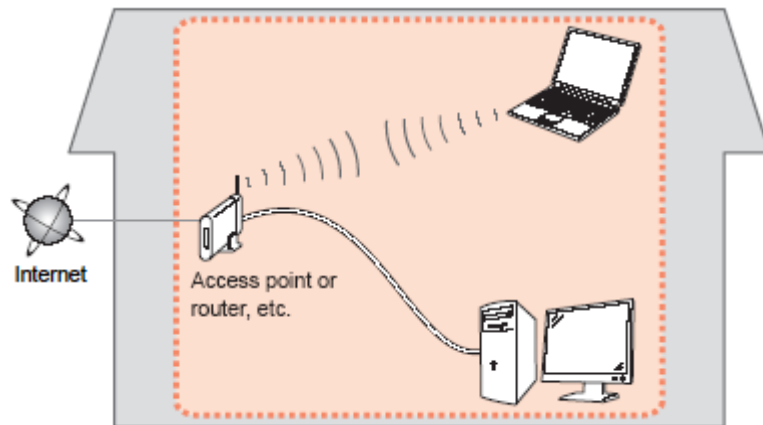
Windows OS

Wireless Setup Using the USB Cable

Preparing to Connect My Multifunction To My Network

Network Requirements

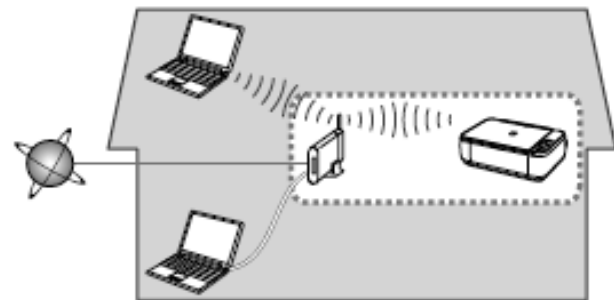
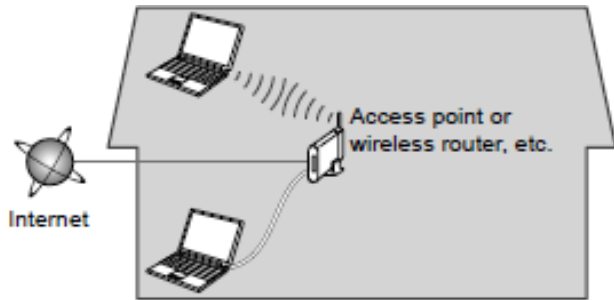
Before connecting the machine to the network, make sure that configuration of the computer and access point or router is complete, and that the computer is connected to the network.



Wireless Connection

Before connecting the machine to the network, the computer needs to be connected to the network. Make sure that configuration of the computer and access point or router is complete.

Preparing to Connect My Multifunction To My Network



An "Ad-hoc connection," which establishes a direct connection to the computer over a wireless connection without using an access point, is not supported.

Notes on Network Connection

- The configuration, router functions, setup procedures and security settings of the network device vary depending on your system environment. For details, refer to your device's instruction manual or contact its manufacturer.
- In an office setup, consult your network administrator
- If you connect to a network that is not protected with security measures, there is a risk of disclosing data such as your personal information to a third party.
- Place the machine and computer on the same network segment.

Installing the Drivers & Software

Software Installation

To use the machine by connecting it to a computer, software including the drivers needs to be copied (installed) to the computer's hard disk. Installation time varies depending on the computer environment or the number of application software to be installed.

IMPORTANT

- Log on as the administrator (or a member of the Administrators group).
- Quit all running applications before installation.
- Do not switch users during the installation process.
- Internet connection may be required during the installation. Connection fees may apply. Consult the internet service provider.
- It may be necessary to restart your computer during the installation process. Follow the on-screen instructions and do not remove the Setup CD-ROM during restarting. The installation resumes once your computer has restarted.
- If the firewall function of your security software is turned on, a warning message may appear that Canon software is attempting to access the network. If such a warning message appears, set the security software to always allow access.

Installing the Drivers & Software

To begin setup of your PIXMA MG3520 on your wireless network, insert the Setup CD-ROM* in your computer.



The setup program will start automatically. The setup instructions presented in this document describe the “ **Wireless Setup Using the USB Cable**”, whereby a USB cable is temporarily connected between the printer and computer during setup. This setup method is used if your computer’s operating system is Windows XP or the printer is not detected using other methods.

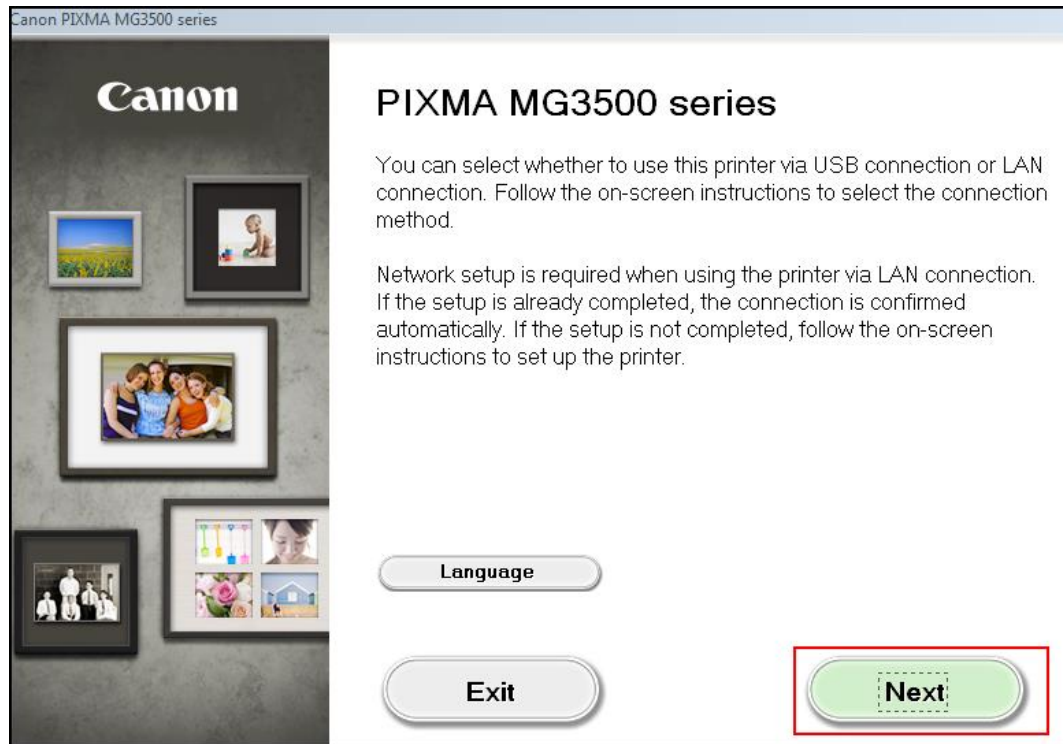
*If you don’t have or cannot use the Setup CD-ROM, follow the steps below to start the setup.

- [Download the software](#) (click the link to download)
- Double-click the downloaded .exe file (Win-mg3500-1_0-ucd.exe)

If the **User Account Control** dialog box appears during the setup, click **Yes** or **Continue**.

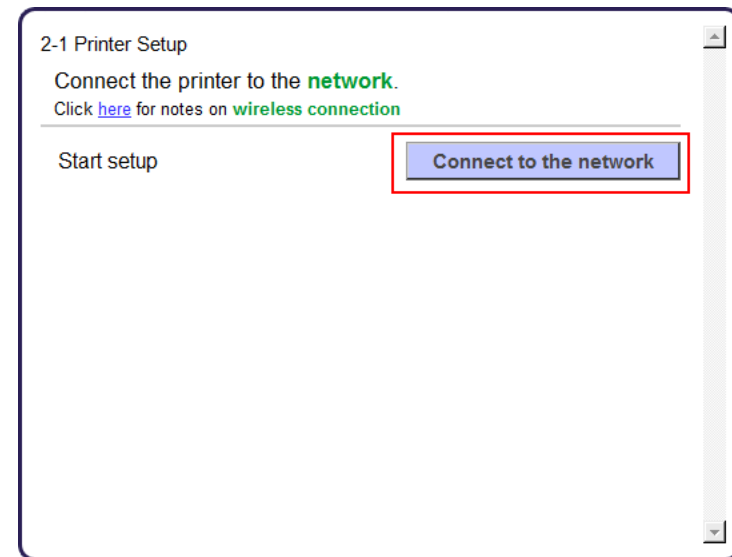
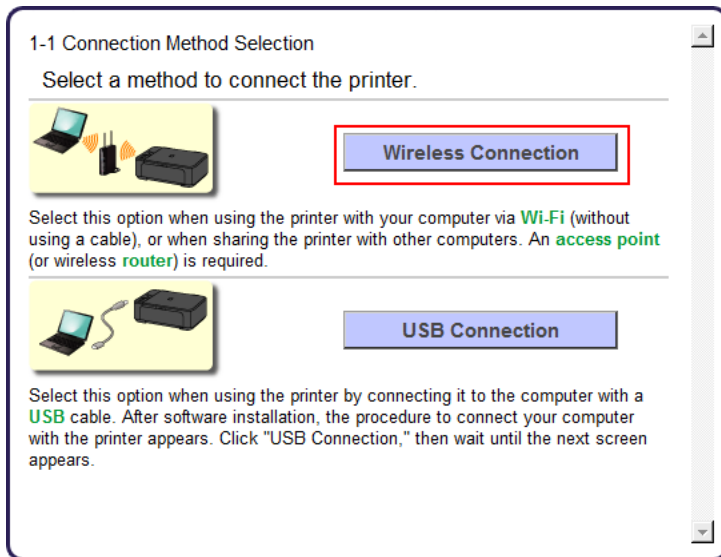
Installing the Drivers & Software

Click **Next** on the initial screen



Installing the Drivers & Software

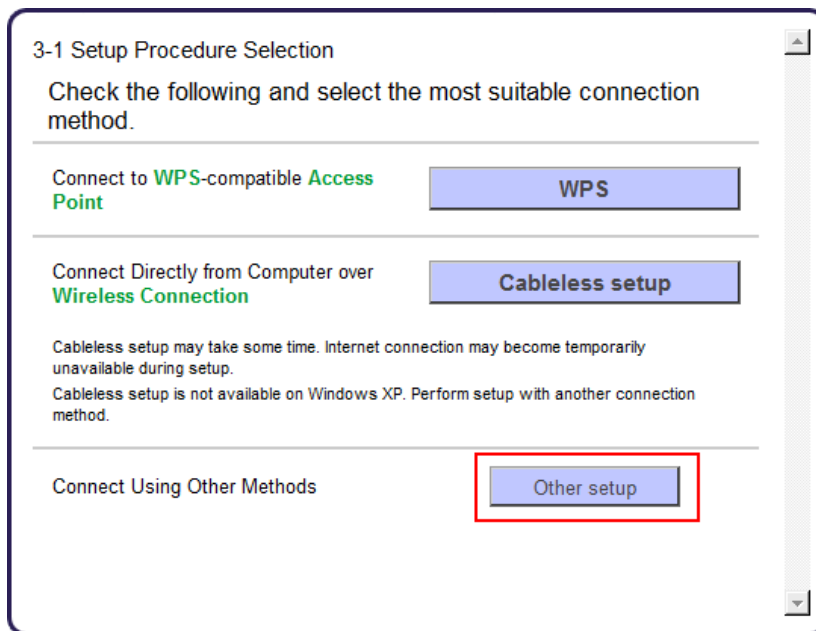
On the **Connection Method Selection** screen (1-1) select **Wireless Connection**, then select **Connect to the network** on the **Printer Setup** screen (2-1).



Installing the Drivers & Software

Continue to follow on-screen instructions.

Select **Other setup** on the **Setup Procedure Selection** screen (3-1).



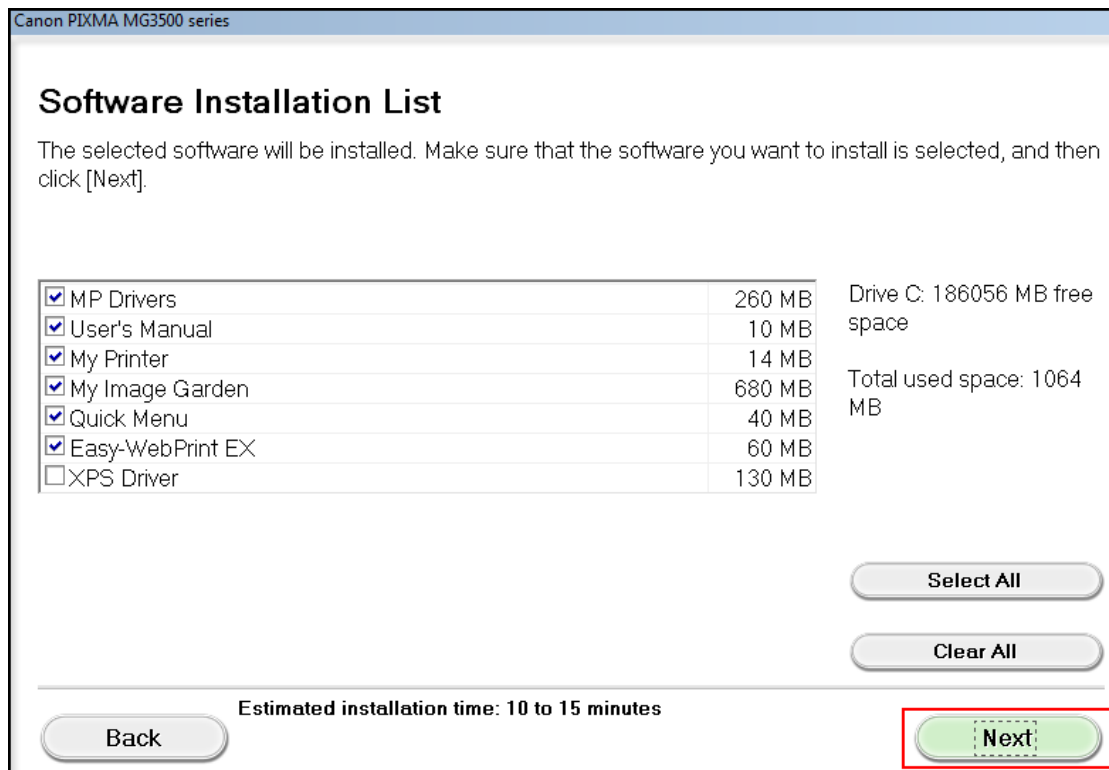
If the Install .NET Framework screen appears, Click Yes



Installing the Drivers & Software

Continue following on-screen instructions. On the **Software Installation List**, select *software to install and click **Next**.

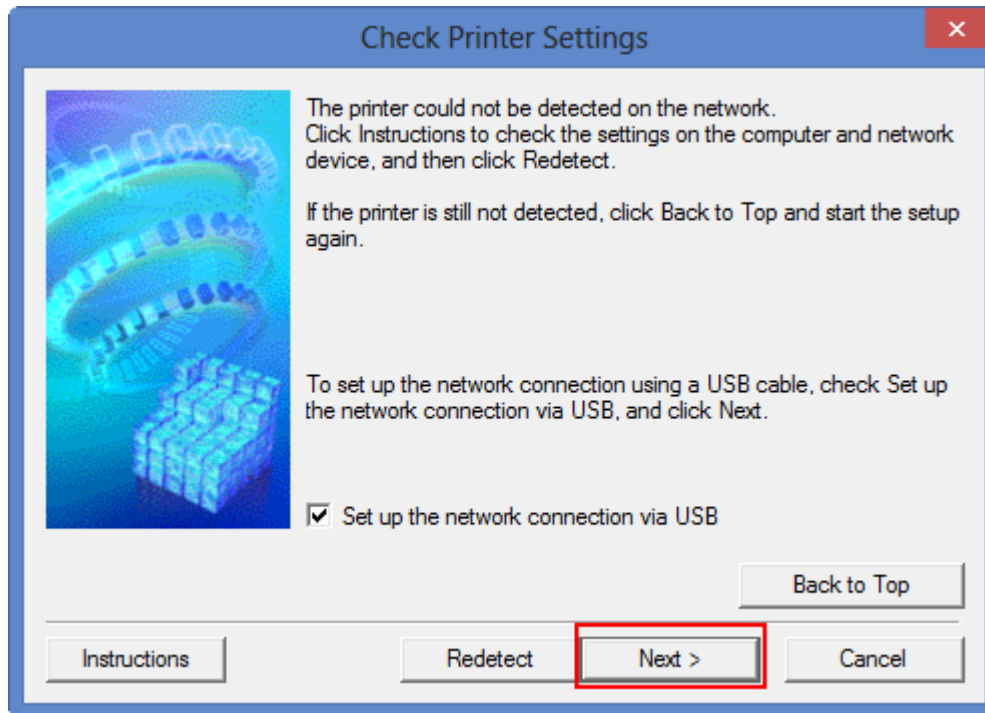
***MP Drivers** is required and cannot be deselected. We recommend installing **My Image Garden** and **Quick Menu** to take full advantage of the printer's features.



Installing the Drivers & Software

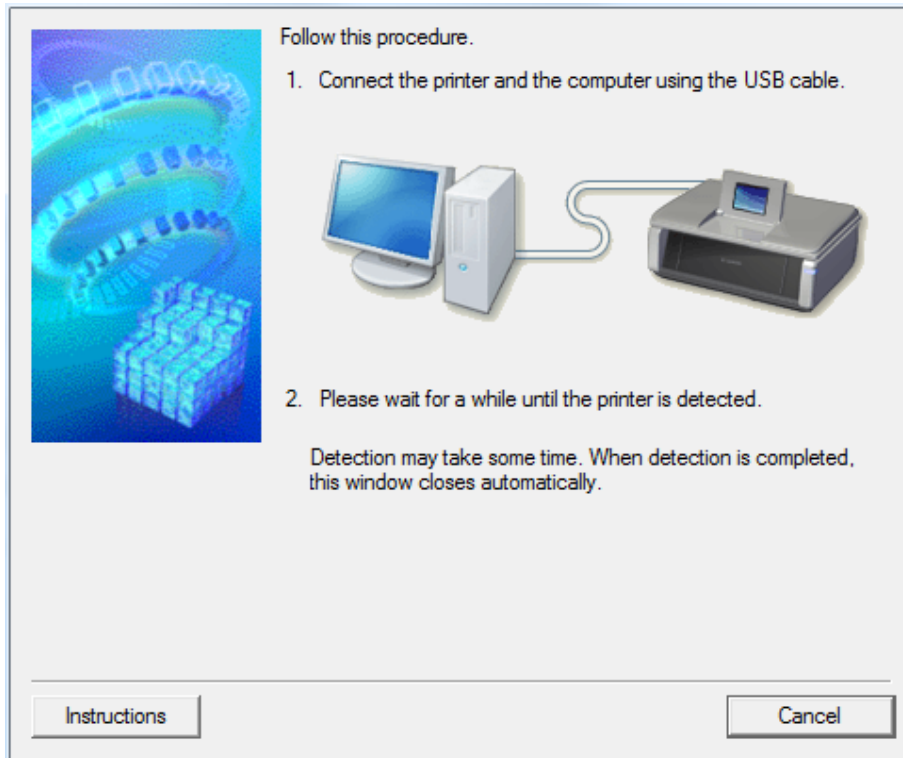
Continue following on-screen instructions.

When the **Check Printer Settings** dialog box appears, check the **Set up the network connection via USB** checkbox and click **Next**.



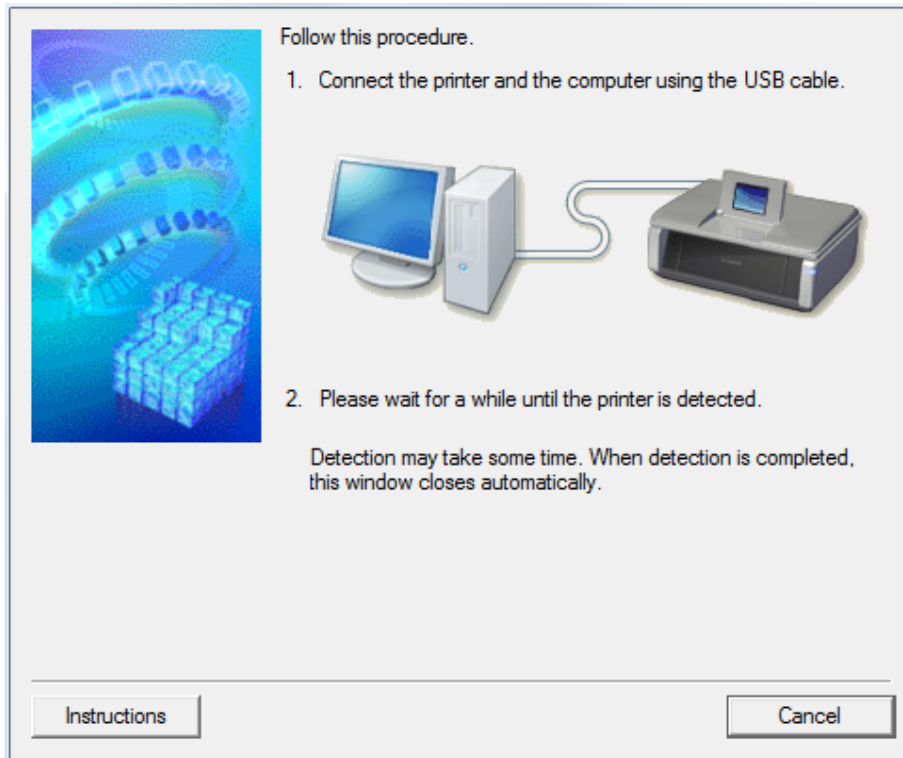
Installing the Drivers & Software

Connect a USB cable between the computer and printer. When the printer has been detected, the window shown below closes automatically.



Installing the Drivers & Software

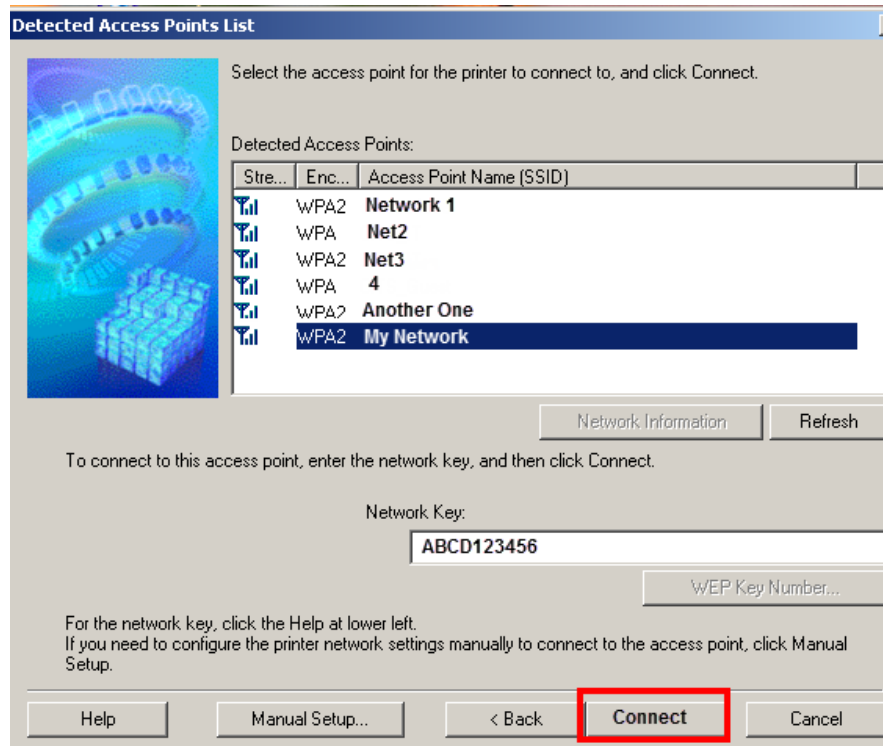
Connect a USB cable between the computer and printer. When the printer has been detected, the window shown below closes automatically.



Installing the Drivers & Software

If the **Detected Access Points List*** appears, select the one you wish to connect to, enter the network key and click **connect**.

*This screen normally appears if you have multiple access points or multiple access points exist in your immediate area. For details on how to check the Access Point name/network name (SSID) and network key, refer to the manual supplied with your access point or contact its manufacturer.



Installing the Drivers & Software

If the **Confirm Connection Access Point*** screen appears, verify the information then click **Yes**

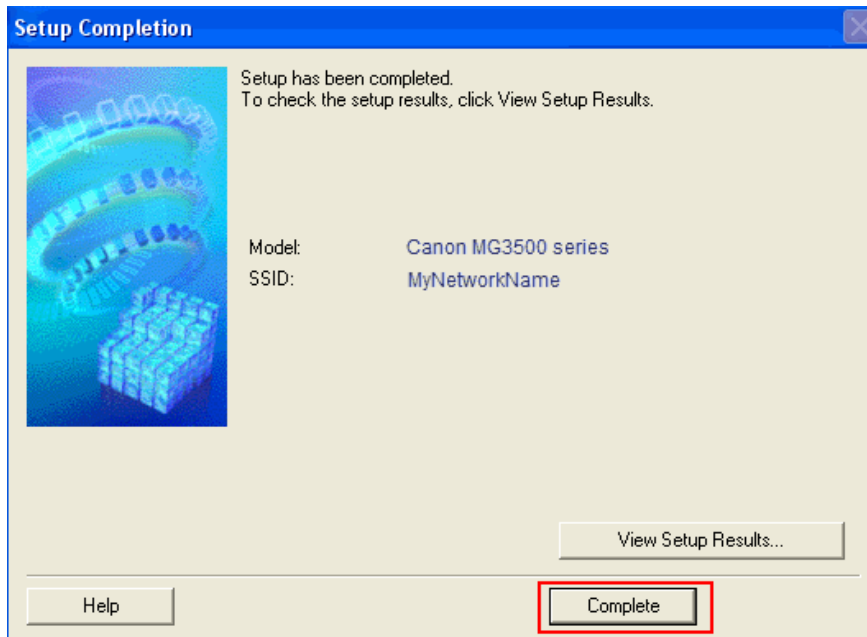
*This screen normally appears when you have only one access point



Installing the Drivers & Software

Continue following on-screen instructions.

When the **Setup Completion** dialog box appears, click **Complete**.



At this point, setup of the printer and network is complete. Continue to follow any remaining on-screen instructions to finish and exit the setup program.

Free Manuals Download Website

<http://myh66.com>

<http://usermanuals.us>

<http://www.somanuals.com>

<http://www.4manuals.cc>

<http://www.manual-lib.com>

<http://www.404manual.com>

<http://www.luxmanual.com>

<http://aubethermostatmanual.com>

Golf course search by state

<http://golfingnear.com>

Email search by domain

<http://emailbydomain.com>

Auto manuals search

<http://auto.somanuals.com>

TV manuals search

<http://tv.somanuals.com>