

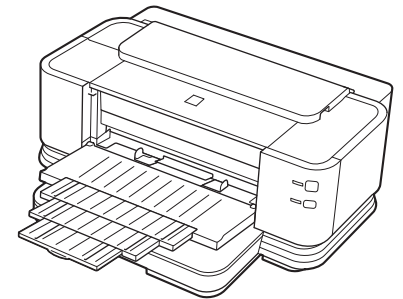
Canon



Photo Printer
PIXMA iX7000 series

Getting Started

Read Me First



Make sure to read this manual before using the printer. Please keep it in hand for future reference.
Download from www.somanuals.com. All Manuals Search And Download.



■ Symbols Used in This Document



Instructions including important information. Be sure to read these indications.



Instructions as notes for operation or additional explanations.



Descriptions for operations that take some time to complete.



Indicates operations in Windows.

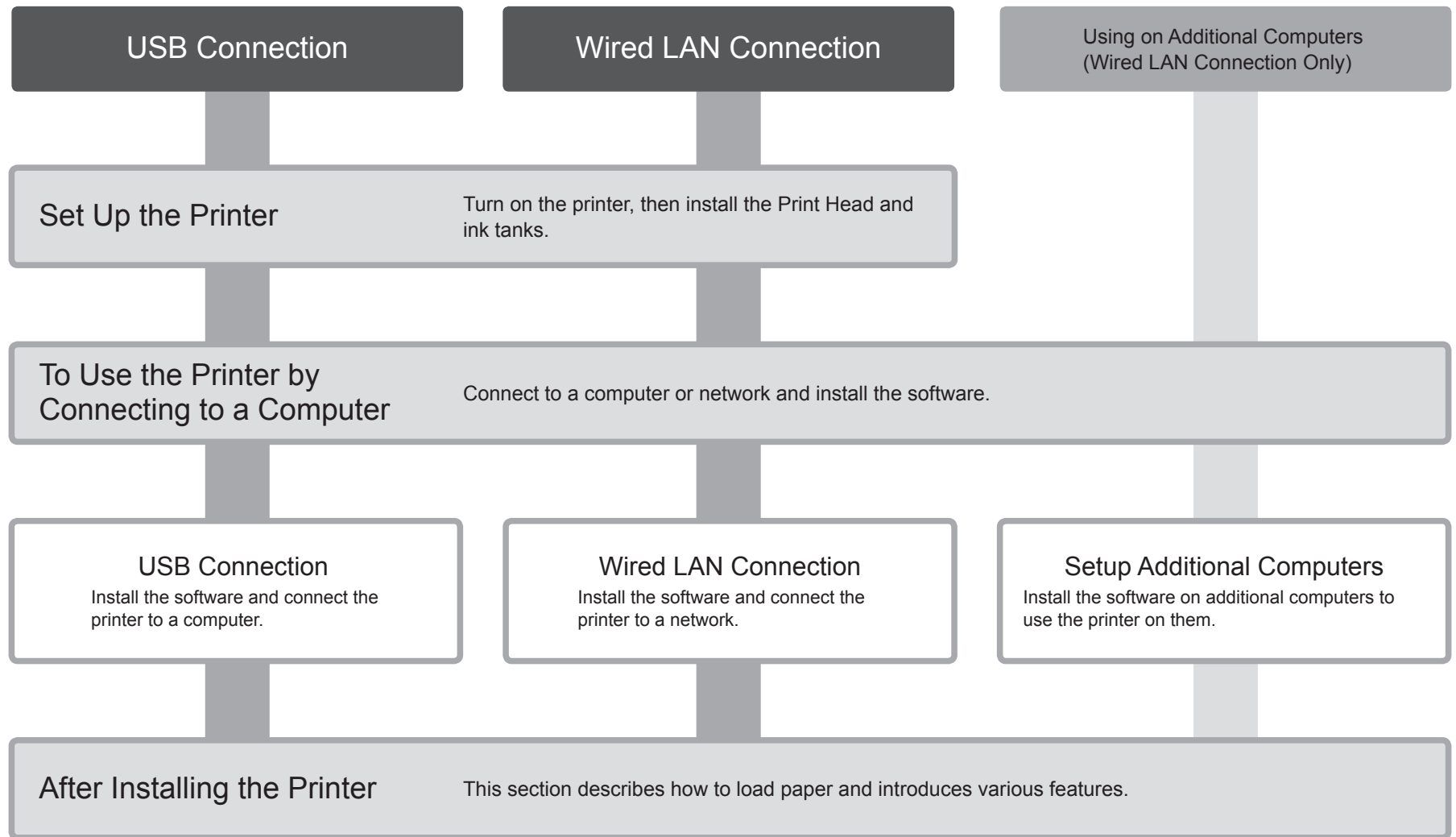


Indicates operations in Macintosh.

- Microsoft is a registered trademark of Microsoft Corporation.
- Windows is a trademark or registered trademark of Microsoft Corporation in the U.S. and/or other countries.
- Windows Vista is a trademark or registered trademark of Microsoft Corporation in the U.S. and/or other countries.
- Internet Explorer is a trademark or registered trademark of Microsoft Corporation in the U.S. and/or other countries.
- Macintosh and Mac are trademarks of Apple Inc., registered in the U.S. and other countries.
- Bonjour is a trademark of Apple Inc., registered in the U.S. and other countries.
- Adobe, Adobe RGB and Adobe RGB (1998) are either registered trademarks or trademarks of Adobe Systems Incorporated in the United States and / or other countries.

Model Number: K10338 (iX7000)

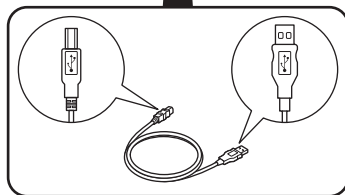
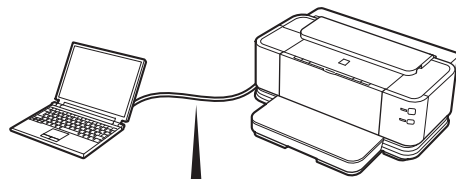
Contents



Preparation

■ Devices Required to Connect to Computers

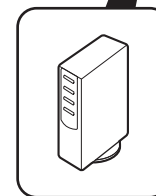
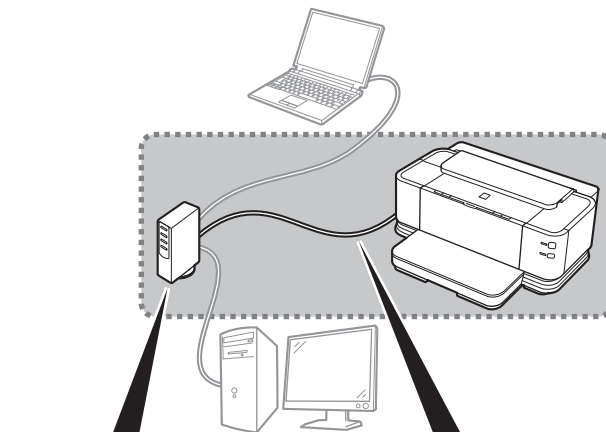
USB Connection



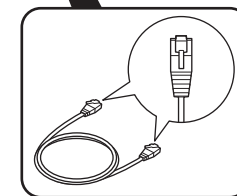
USB cable

The USB cable supplied with the printer is required.

Wired LAN Connection



Router, etc.

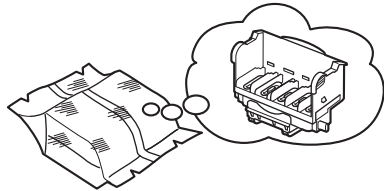


LAN cable

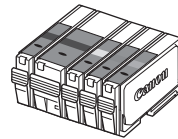
A network device (router, etc.) and LAN cable are required.

■ Check the Included Items

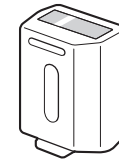
Before turning on the printer, remove all orange tapes and protective sheets from the inside and outside of the printer.



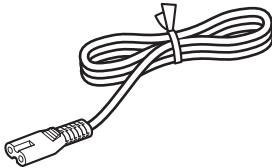
Print Head



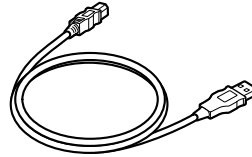
5 ink tanks
(PBK, BK, Y, M, C)



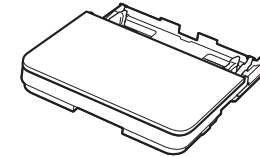
clear ink tank



power cord



USB cable



Cassette

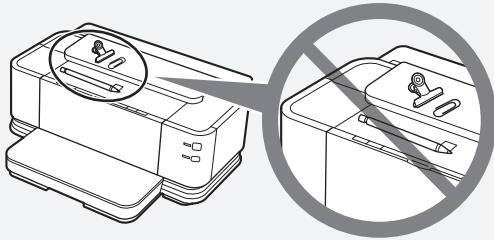
- Manuals
- Setup CD-ROM
(containing the drivers, applications and on-screen manuals)
- Warranty
- cleaning sheets



The USB cable is used during the network setup procedure.

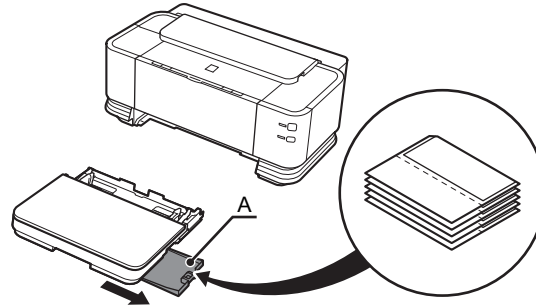
Installing the Cassette

□ Choosing a Location



- When installing the printer, lift and move it with the help of another person.
- Do not install the printer where an object may fall on it. The object may fall inside the printer, resulting in malfunction.
- Do not place any object on top of the printer. It may fall into the printer when opening covers, resulting in malfunction.

1



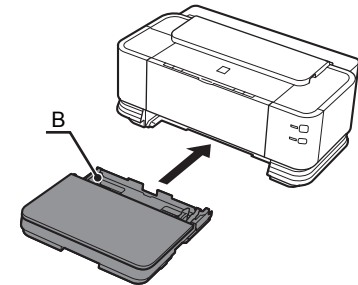
Store the cleaning sheets in the Cleaning Sheet Holder (A).

Cleaning sheets are used for cleaning the Transport Roller.



- For details on how to store the cleaning sheets, refer to "Cleaning the Transport Roller (Sheet Cleaning)" in the on-screen manual: **Basic Guide**.

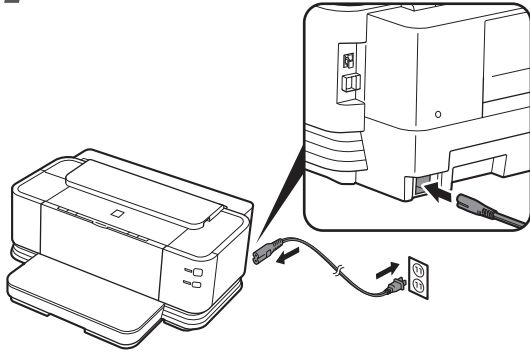
2



Insert the Cassette (B) against the back end of the printer.

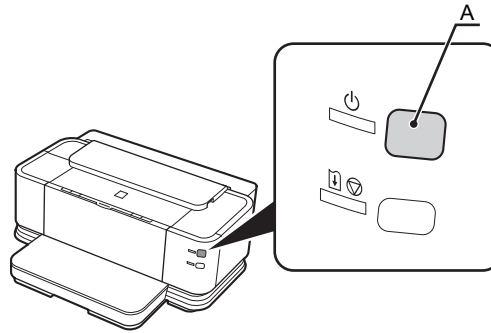
Turn the Power On

1



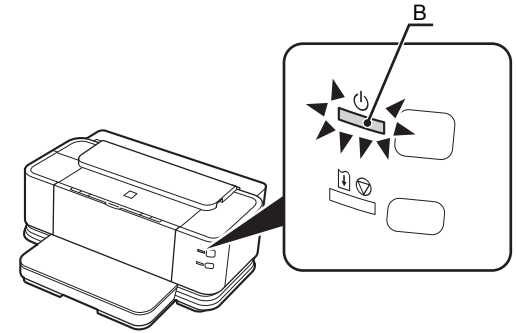
Plug the power cord into the back right of the printer, then connect the other end to the wall outlet.

2



Turn on the printer (A).

3

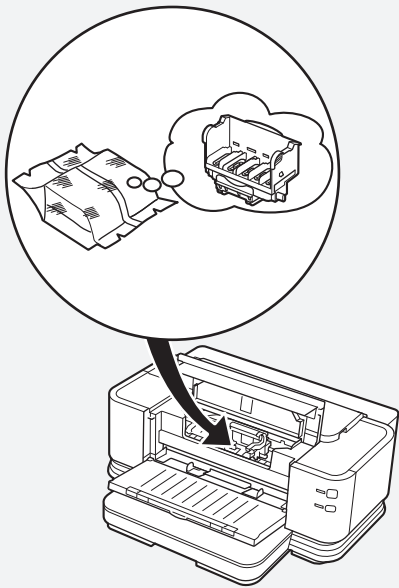


Make sure that the **POWER** lamp (B) lights green.



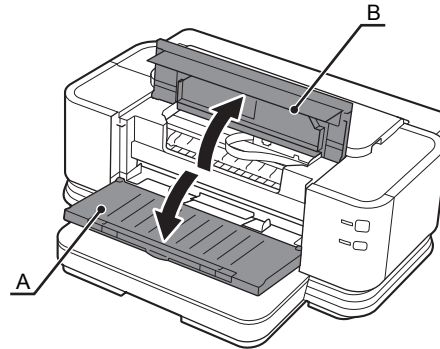
- Do NOT connect the USB cable or LAN cable at this stage.

Install the Print Head



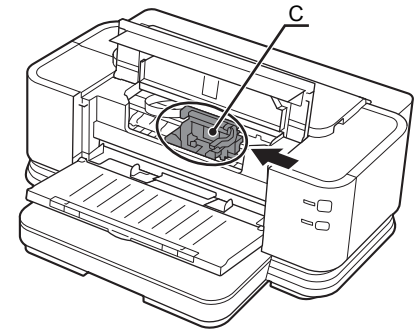
- Handle the Print Head carefully. Do not drop or apply excessive pressure to it.

1



Open the Paper Output Tray (A) and the Top Cover (B).

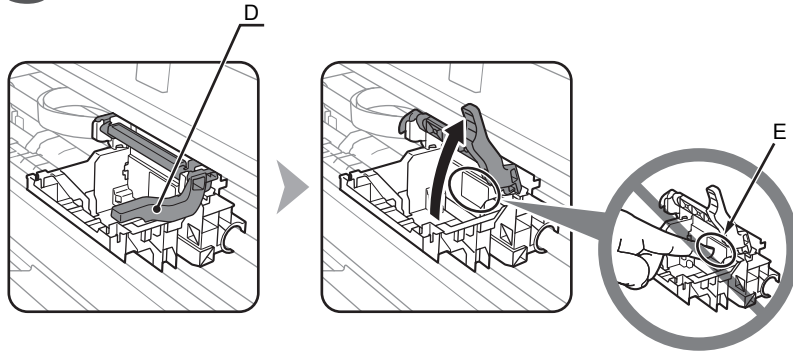
2



Make sure that the Print Head Holder (C) moves to the installation position.

- The Print Head Holder makes a noise as it moves. This is normal operation.
- If the Print Head Holder does not move, make sure that the printer is turned on.

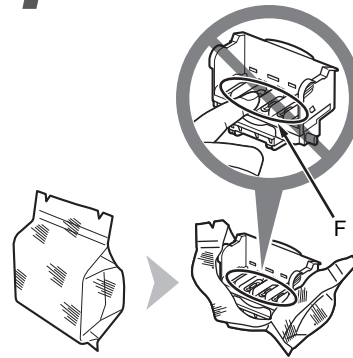
3



Firmly raise the Print Head Lock Lever (D) of the Print Head Holder until it stops.

- Do not touch the inside of the Print Head Holder (E). The printer may not print properly if you touch it.

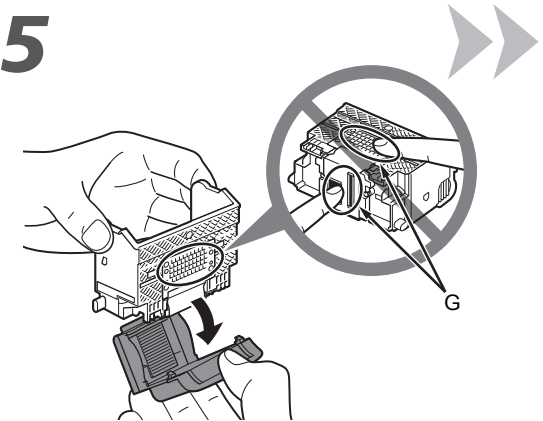
4



Remove the Print Head from the silver package.

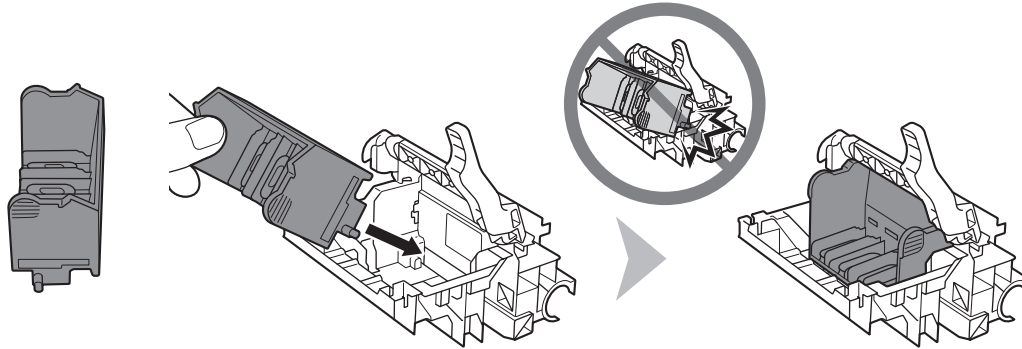
- Do not touch the inside (F) or metal parts (G) of the Print Head. The printer may not print properly if you touch them.
- There may be some transparent or light color ink on the inside of the bag the Print Head comes in, or the inside of the protective cap - this has no effect on print quality. Be careful not to get ink on yourself when handling these items.

5



Remove the orange protective cap.

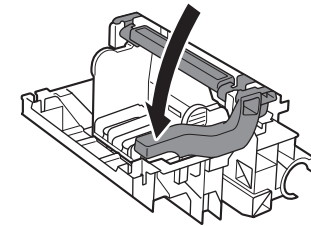
6



Tilt the Print Head forward and set it in place as shown.

- Do not knock the Print Head against the sides of the holder.

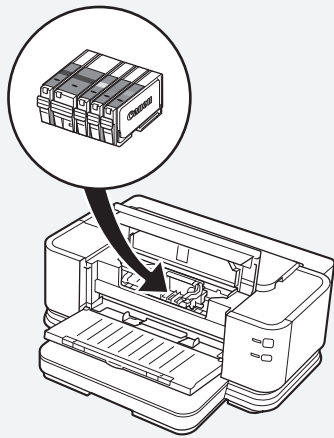
7



Lower the Print Head Lock Lever completely.

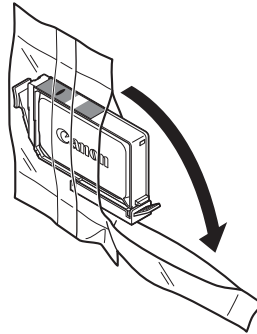
- Hold the Print Head Lock Lever firmly and lower it gently.
- Once you have installed the Print Head, do not remove it unnecessarily.

Install the Ink Tanks



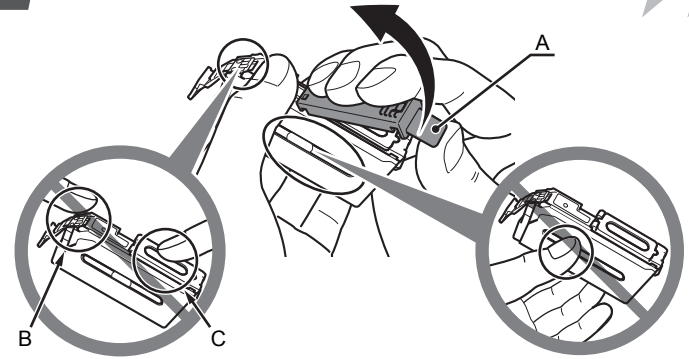
- Handle the ink tanks carefully. Do not drop or apply excessive pressure to them.
- If the Top Cover is left open for more than 10 minutes, the Print Head Holder moves to the right. In this case, close and reopen the Top Cover.
- Be sure to use the supplied ink tanks.

1



Remove the ink tank from its package.

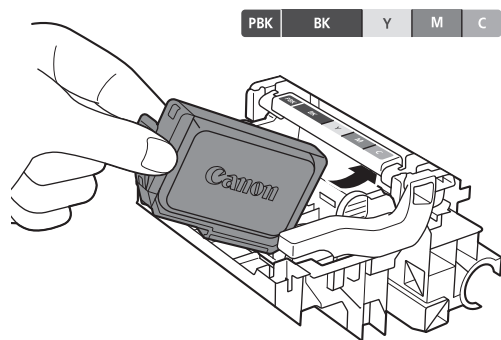
2



Remove and discard the orange protective cap (A) located on the bottom of the ink tank.

- Do not touch the electrical contacts (B) or open ink port (C) on the ink tank. The printer may not print properly if you touch them.
- Do not hold the sides of the ink tank; ink may splash.

3

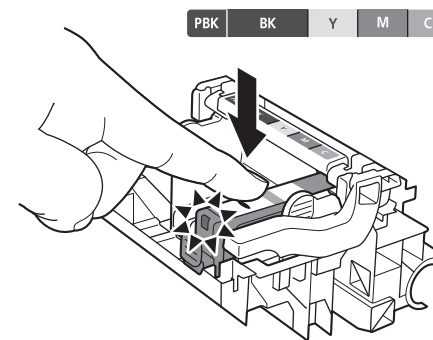


Tilt the ink tank, then insert it under the label and against the back end of the slot.

Make sure that the color of the label matches the ink tank.

- Match the labels when installing.

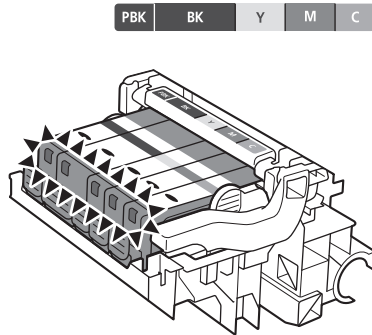
4



Press the **PUSH** mark on the ink tank firmly until it clicks.

When the installation is completed properly, the **Ink** lamp lights red.

5



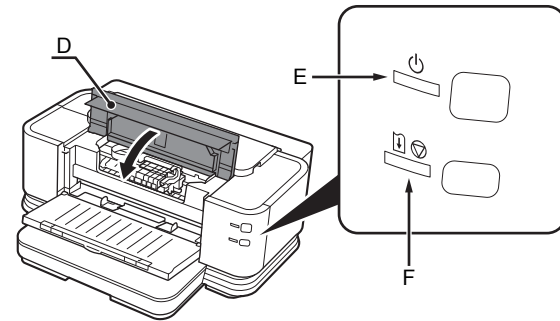
Install all the other ink tanks in the same way.

Install all the ink tanks.

Make sure all the **Ink** lamps light red.

- Once you have installed the ink tanks, do not remove them unnecessarily.

6



Close the Top Cover (D).

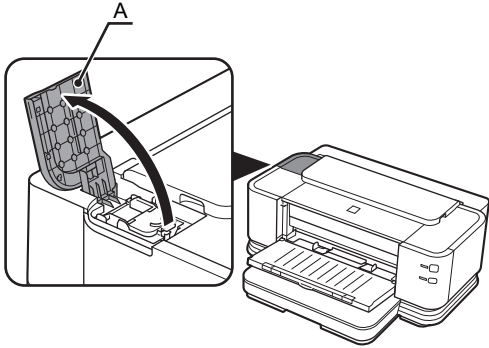


- Wait for about 2 minutes until the **POWER** lamp (green) (E) stops flashing and stays lit then operating noise stops, and go to the next step. Do not open the Top Cover while the lamp is flashing. The printer vibrates while the lamp is flashing because ink is stirred inside the printer.

- If an **Alarm** lamp (F) flashes orange, make sure that the Print Head and the ink tanks are correctly installed.

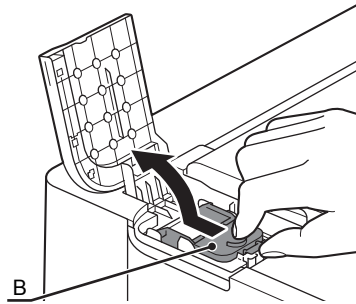
Install the Clear Ink Tank

1



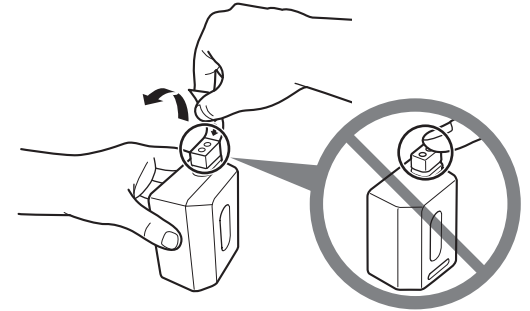
Open the Clear Ink Tank Cover (A).

2



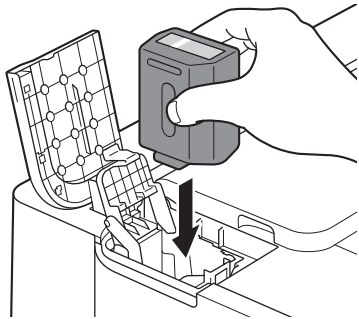
Open the Clear Ink Tank Locking Cover (B).
Pinch the tab and push back to open.

3



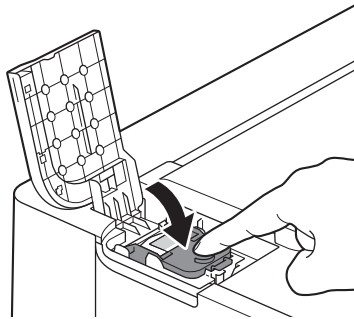
Remove the orange tape in the direction of the arrow from the clear ink tank.

4



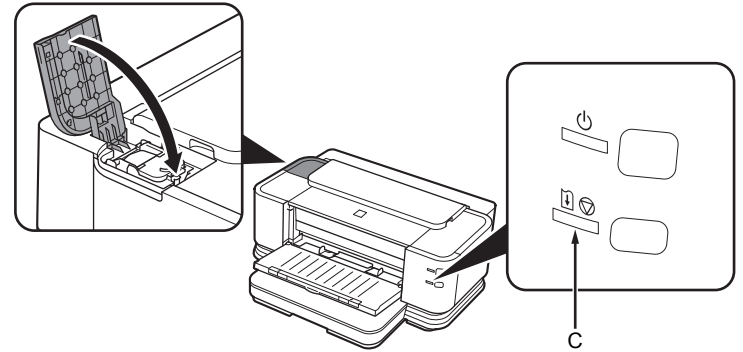
Insert the clear ink tank straight.

5



Replace the Clear Ink Tank Locking Cover, then press the center firmly until it clicks.

6



Close the Clear Ink Tank Cover.

- Once you have installed the clear ink tank, do not remove it unnecessarily.

- If an **Alarm** lamp (C) flashes orange, make sure that the clear ink tank are correctly installed.

Select Connection Method

■ Preparation for Setup

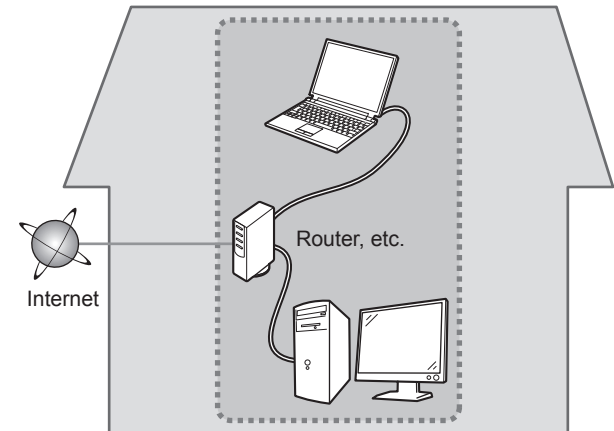
□ Notes on Setup

- To use the printer by connecting it to a computer, software including the drivers needs to be copied (installed) to the computer's hard disk, and setting configured according to the connection method. Read the following carefully before starting setup. The installation process takes about 20 minutes. (The installation time varies depending on the computer environment or the number of applications to be installed.)
- The screens below are based on Windows Vista operating system Ultimate Edition (hereafter referred to as "Windows Vista") and Mac OS X v.10.5.x.

-
- Quit all running applications before installation.
 - Log on as the administrator (or a member of the Administrators group).
 - Do not switch users during the installation process.
 - Internet connection may be required during the installation. Connection fees apply.
 - It may be necessary to restart your computer during the installation process. Follow the on-screen instructions and do not remove the **Setup CD-ROM** during restarting. The installation resumes once your computer has restarted.
 - Mac OS 9, Mac OS X Classic environments, or Mac OS X v.10.3.8 or earlier are not supported.

□ Preparation for Wired LAN Connection

- A router and LAN cable are required to connect the printer to a wired LAN. These must be purchased separately.
- Before connecting the printer to the network, make sure that configuration of the computer and network devices (router, etc.) is complete, and that the computer can connect to the network.



-
- If the firewall function of your security software is turned on, a warning message may appear that Canon software is attempting to access the network. If such a warning message appears, set the security software to always allow access.

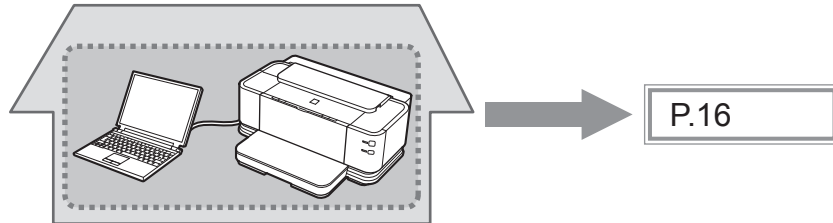


-
- The configuration, router functions, setup procedures and security settings of the network device vary depending on your system environment. For details, refer to your device's instruction manual or contact its manufacturer.
 - In an office setup, consult your network administrator.
 - If an error message appears or if you have trouble with the network connection, refer to the printed manual: **Network Setup Troubleshooting**.

Select the method to connect the printer to the computer according to your system environment.

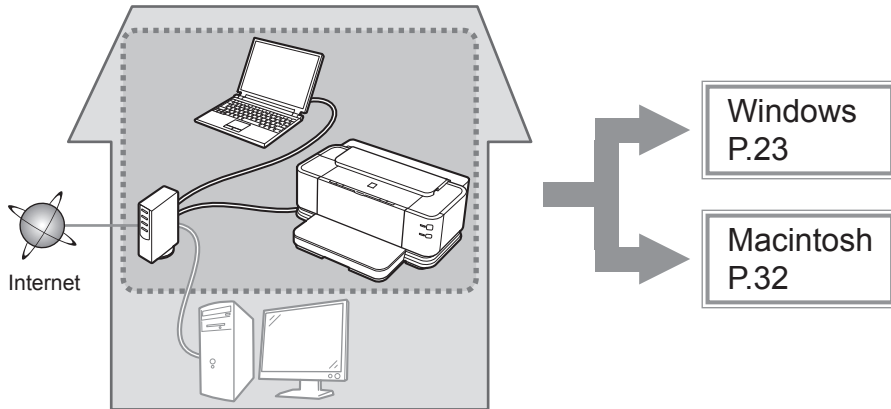
USB Connection

This is recommended when you use the printer on only one computer.



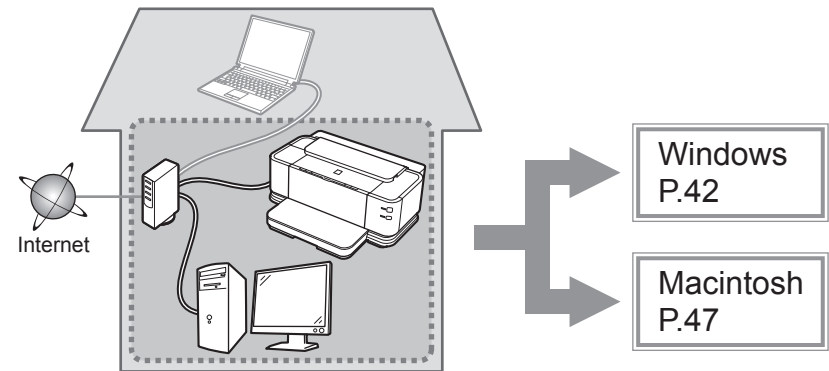
Wired LAN Connection

This is recommended when using the printer on a computer connected to a network.



Setup Additional Computers

Perform only the software installation on the computer you want to use.



USB Connection

Windows

- If the **Found New Hardware** or **Found New Hardware Wizard** dialog box appears:



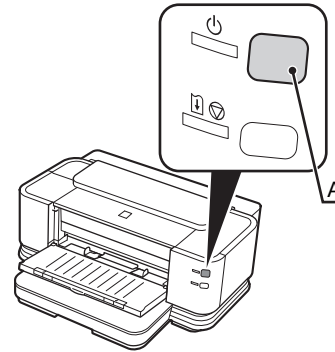
If you connect a USB cable to the printer before installation of the drivers, this screen appears.

- 1 Remove the USB cable connected to your computer. The dialog box may close. In this case, proceed from step 1.
- 2 Click **Cancel** to quit the dialog box.
- 3 Proceed from step 1.

Windows

- For Windows Vista/XP
If you are using Internet Explorer 7 or later, you can use the Web print software Easy-WebPrint EX. An internet connection is required for installation. (It is also possible to install this software later.)

1



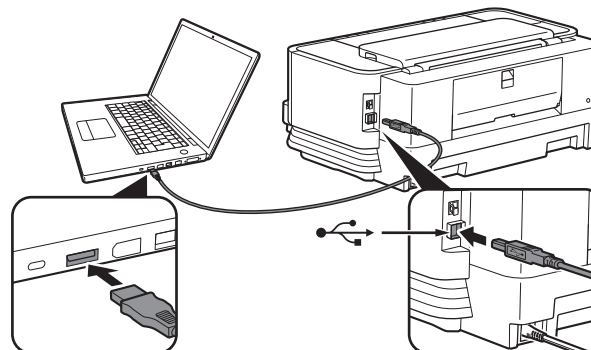
TURN OFF THE PRINTER (A).



- It takes about 1 minute until the printer turns off.

Macintosh

1



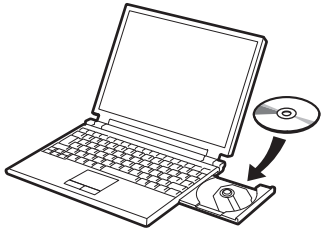
Connect the printer to the computer with a USB cable.

Make sure the printer is turned on.



- The USB Port is located on the right side at the back of the printer. The lower port is for USB.

2



Turn on the computer, then insert the **Setup CD-ROM** into the CD-ROM drive.

The setup program will start automatically.

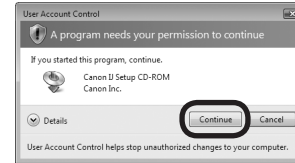
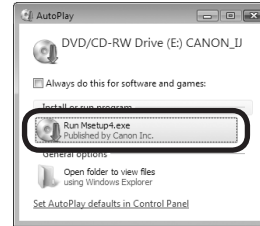


- If the program does not start automatically, double-click the CD-ROM icon in **Computer** or **My Computer**. When the CD-ROM contents appear, double-click **MSETUP4.EXE**.

3

Windows Vista

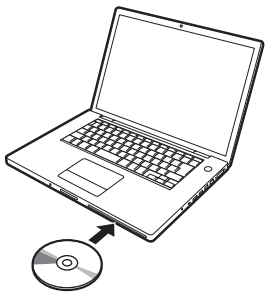
Windows XP/2000 → 4



Click **Run Msetup4.exe** on the **AutoPlay** screen, then click **Continue** on the **User Account Control** dialog box.

If the **User Account Control** dialog box reappears in following steps, click **Continue**.

2



Turn on the computer, then insert the **Setup CD-ROM** into the CD-ROM drive.

3



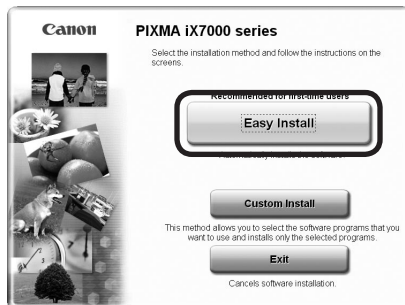
Double-click the **Setup** icon of the CD-ROM folder to proceed to the following screen. Enter your administrator name and password, then click **OK**.

If you do not know your administrator name or password, click **Help**, then follow the on-screen instructions.



- If the CD-ROM folder does not open automatically, double-click the CD-ROM icon on the desktop.

4



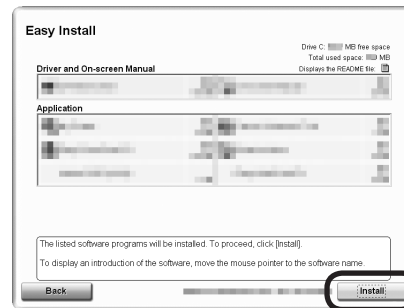
Click **Easy Install**.

The drivers, application software, and on-screen manuals are installed all together.



- If you want to select particular items to install, click **Custom Install**.

5



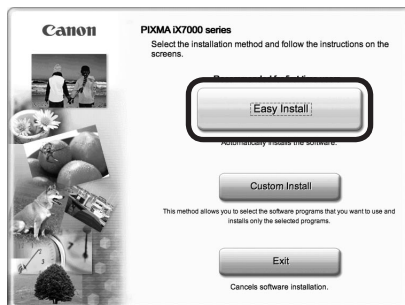
Click **Install**.



For Windows Vista/XP

- If you are using Internet Explorer 7 or later, you can use the Web print software Easy-WebPrint EX. An internet connection is required for installation. (It is also possible to install this software later.)

4



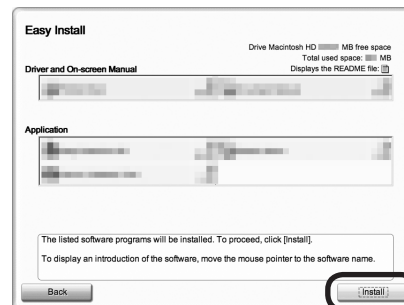
Click **Easy Install**.

The drivers, application software, and on-screen manuals are installed all together.



- If you want to select particular items to install, click **Custom Install**.

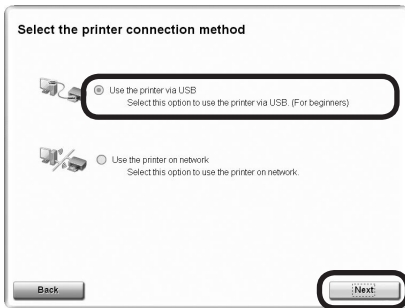
5



Click **Install**.

Follow any on-screen instructions to proceed with the software installation.

6



Select **Use the printer via USB**, then click **Next**.

Follow any on-screen instructions to proceed with the software installation.

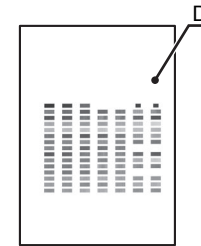
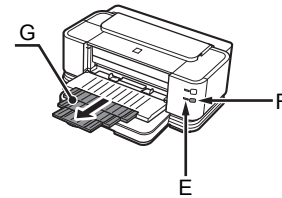
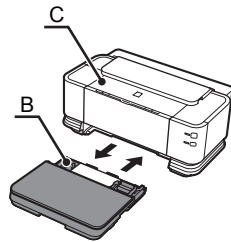
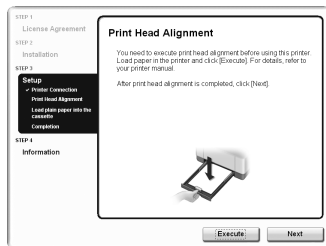
6



When the **Start Setup** screen appears, click **Execute**.

Important Information for the Installation

□ Print Head Alignment



Load two sheets of A4 or Letter-sized plain paper into the Cassette (B) by referring to "Loading Paper" on page 54, then click **Execute**.

Do not open the Top Cover (C) while printing.



It takes about 5 minutes to start printing because ink replenishment is in progress.

When clear ink replenishment is in progress, × appears in the corresponding area of the ink information screen. Please wait.

When the pattern (D) shown is printed, Print Head Alignment is complete. In Windows, click **Next** on the **Print Head Alignment** screen.



Wait until the pattern printing ends (about 5 minutes after printing starts).



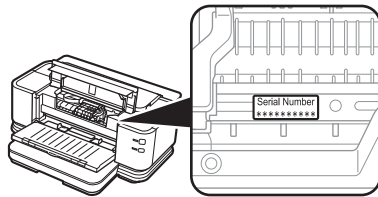
- If the **Alarm** lamp (orange) (E) flashes, press the **RESUME/CANCEL** button (F) on the printer to clear the error, then click **Next**. After the installation is complete, perform Print Head Alignment by referring to "When Printing Becomes Faint or Colors are Incorrect" in the on-screen manual: **Basic Guide**.



- Pull out the Front Tray Extension (G) beforehand.
- The pattern is printed in black and blue.

Important Information for the Installation

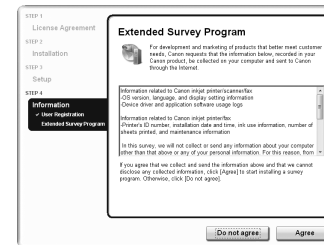
□ Necessary Information for the User Registration



The product serial number is required when registering the product. The serial number is located inside the printer (as shown in the illustration).

- When opening the Top Cover, the Print Head Holder moves automatically.

□ About Extended Survey Program



If you can agree to Extended Survey Program, click **Agree**.
If you click **Do not agree**, the Extended Survey Program will not be installed.
(This has no effect on the printer's functionality.)



- The screen does not appear on Mac OS X v.10.3.9.

7



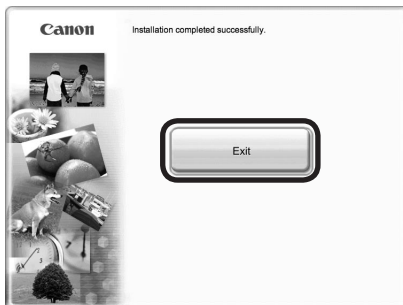
Click **Exit** to complete the installation.

If **Restart** is displayed, follow the instruction to restart the computer.

After restarting the computer, remove the **Setup CD-ROM** and keep it in a safe place.

Next, read "Loading Paper" on page 54!

7

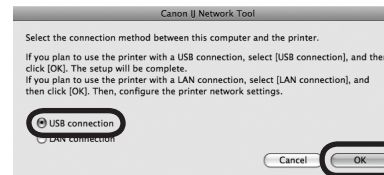


Click **Exit** to complete the installation.

Canon IJ Network Tool starts automatically.

Remove the **Setup CD-ROM** and keep it in a safe place.

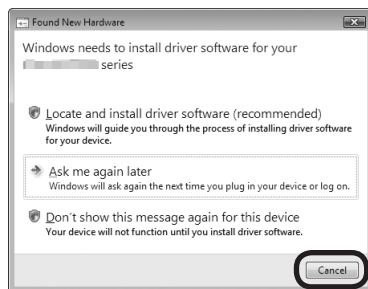
8



On the **Canon IJ Network Tool** screen, select **USB connection**, then click **OK**.

Next, read "Loading Paper" on page 54!

- If the **Found New Hardware** or **Found New Hardware Wizard** dialog box appears:

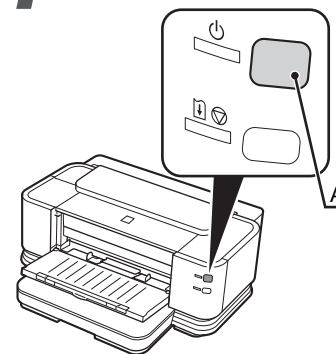


If you connect a USB cable to the printer before installation of the drivers, this screen appears.

- 1 Remove the USB cable connected to your computer. The dialog box may close. In this case, proceed from step **1**.
- 2 Click **Cancel** to quit the dialog box.
- 3 Proceed from step **1**.

- For Windows Vista/XP
If you are using Internet Explorer 7 or later, you can use the Web print software Easy-WebPrint EX. An internet connection is required for installation. (It is also possible to install this software later.)

1



TURN OFF THE PRINTER (A).



- It takes about 1 minute until the printer turns off.

2



Turn on the computer, then insert the **Setup CD-ROM** into the CD-ROM drive.

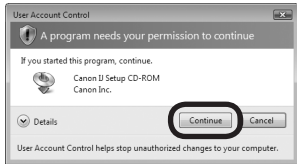
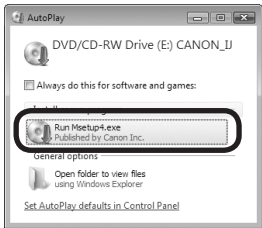
The setup program will start automatically.



- If the program does not start automatically, double-click the CD-ROM icon in **Computer** or **My Computer**. When the CD-ROM contents appear, double-click **MSETUP4.EXE**.

3 Windows Vista

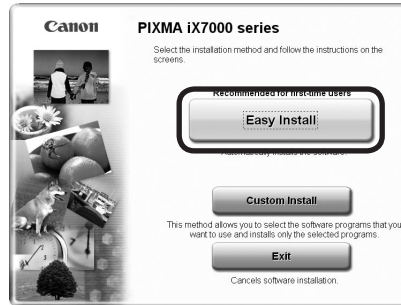
Windows XP/2000 → 4



Click **Run Msetup4.exe** on the **AutoPlay** screen, then click **Continue** on the **User Account Control** dialog box.

If the **User Account Control** dialog box reappears in following steps, click **Continue**.

4



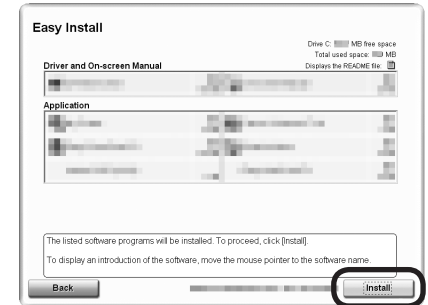
Click **Easy Install**.

The drivers, application software, and on-screen manuals are installed all together.



- If you want to select particular items to install, click **Custom Install**.

5



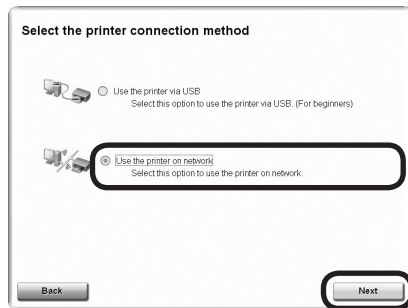
Click **Install**.



For Windows Vista/XP

- If you are using Internet Explorer 7 or later, you can use the Web print software Easy-WebPrint EX. An internet connection is required for installation. (It is also possible to install this software later.)

6



Select **Use the printer on network**, then click **Next**.

7



Read the **License Agreement** screen carefully and click **Yes**.

Follow any on-screen instructions to proceed with the software installation.

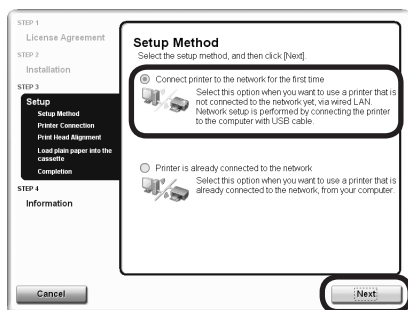
8



When the **Please Allow All Install Wizard Processes** screen appears, click **Next**.



9



On the **Setup Method** screen, select **Connect printer to the network for the first time**, then click **Next**.

10 Prepare Cables



USB cable



LAN cable

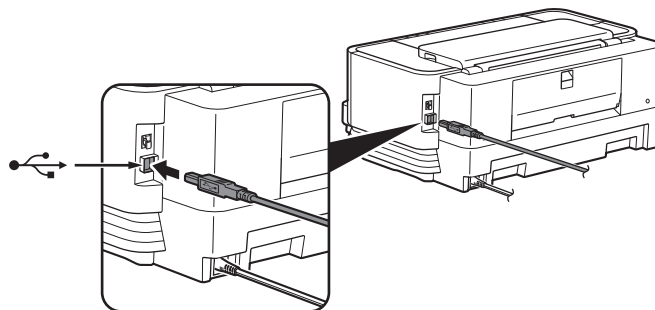
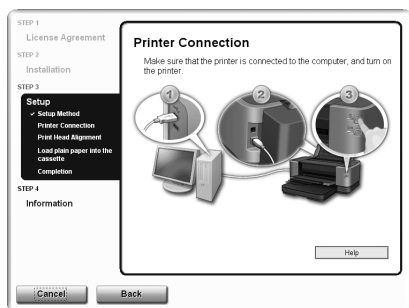
Have a USB and LAN cable ready.

- If the above screen is not displayed, click **Cancel** and start again from step **5**. Be sure to select **Use the printer on network** in step **6**.



- For a wired LAN connection, prepare a LAN cable separately.

11



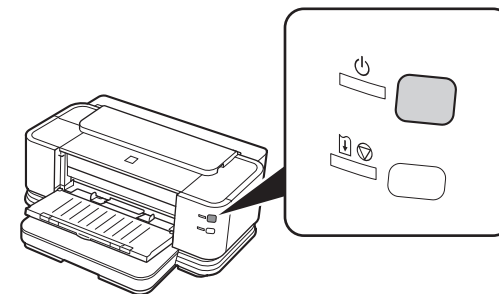
When the **Printer Connection** screen appears, connect the printer to the computer with a USB cable.

A USB cable is used to send the network settings to the printer.



- The USB Port is located on the right side at the back of the printer. The lower port is for USB.

12

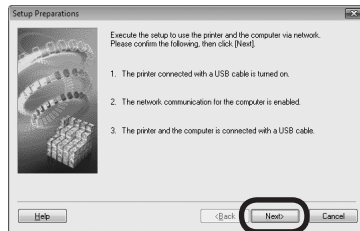


Turn on the printer.

When the printer is recognized by the computer, a message appears on the screen.

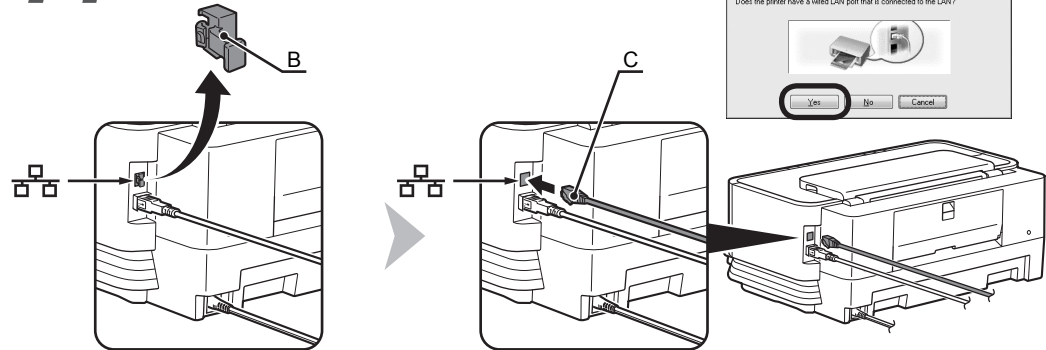
- It takes about 40 seconds for the **POWER** lamp to light green.
- If installation does not continue after 10 minutes, click **Help** on the screen in step **11**, then confirm the message.

13



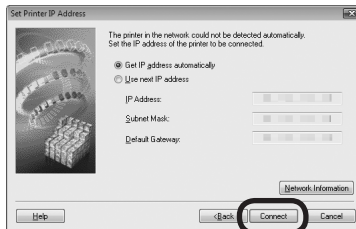
When the **Setup Preparations** dialog box appears, make sure that preparation is complete, then click **Next**.

14



When the above screen appears, remove the Cap (B) of the printer, connect a network device with a LAN cable (C), then click **Yes**.

- If the following dialog box appears



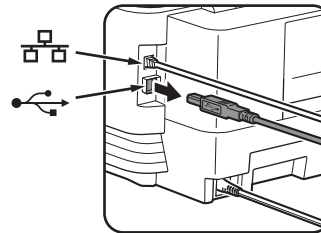
When the **Set Printer IP Address** dialog box appears, click **Connect**.

If the printer is detected automatically, the **Set Printer IP Address** dialog box does not appear.

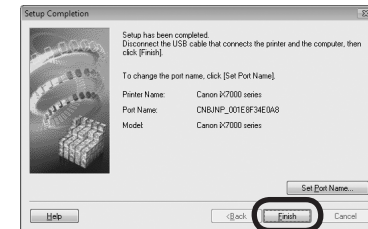


- If no connection is established even after **Connect** is clicked, refer to "The Set Printer IP Address Screen is Displayed" in the printed manual: **Network Setup Troubleshooting**.

15



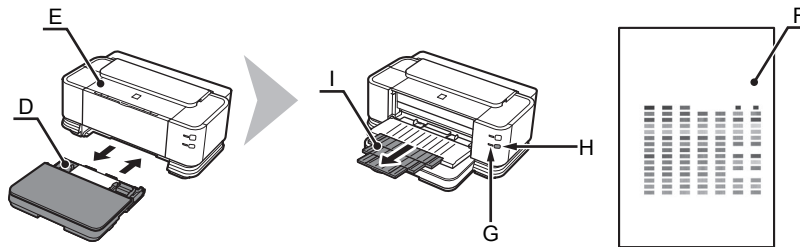
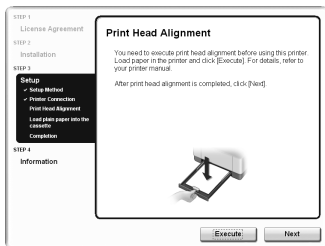
When the **Setup Completion** dialog box appears, remove the USB cable, then click **Finish**.



- To change the port name, click **Set Port Name**. For details, refer to "Changing the Port Name" in the printed manual: **Network Setup Troubleshooting**.
- If **Unsafe Removal of Device** is displayed, click **OK**.

Important Information for the Installation

□ Print Head Alignment



Load two sheets of A4 or Letter-sized plain paper into the Cassette (D) by referring to "Loading Paper" on page 54, then click **Execute**.

Do not open the Top Cover (E) while printing.



It takes about 5 minutes to start printing because ink replenishment is in progress.

When clear ink replenishment is in progress, × appears in the corresponding area of the ink information screen. Please wait.

When the pattern (F) shown is printed, Print Head Alignment is complete.

On the **Print Head Alignment** screen, click **Next**.



Wait until the pattern printing ends (about 5 minutes after printing starts).

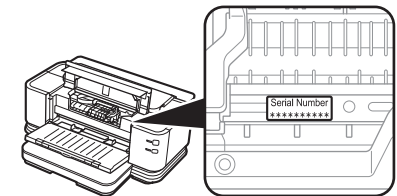


- If the **Alarm** lamp (orange) (G) flashes, press the **RESUME/CANCEL** button (H) on the printer to clear the error, then click **Next**. After the installation is complete, perform Print Head Alignment by referring to "When Printing Becomes Faint or Colors are Incorrect" in the on-screen manual: **Basic Guide**.



- Pull out the Front Tray Extension (I) beforehand.
- The pattern is printed in black and blue.

□ Necessary Information for the User Registration



The product serial number is required when registering the product. The serial number is located inside the printer (as shown in the illustration).

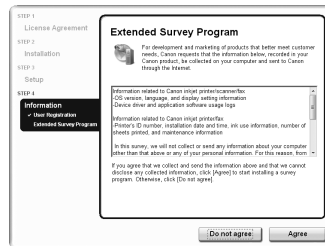


- When opening the Top Cover, the Print Head Holder moves automatically.

16

Important Information for the Installation

□ About Extended Survey Program



If you can agree to Extended Survey Program, click **Agree**.

If you click **Do not agree**, the Extended Survey Program will not be installed.
(This has no effect on the printer's functionality.)



Click **Exit** to complete the installation.

If **Restart** is displayed, follow the instruction to restart the computer.

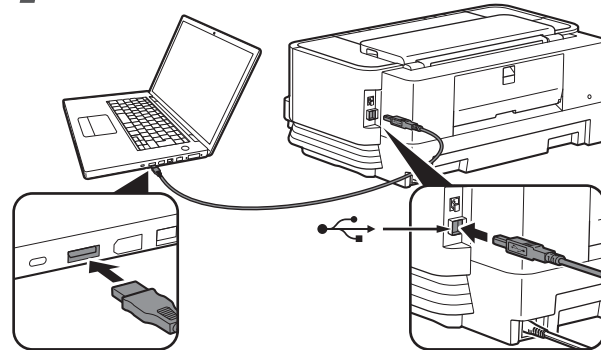
After restarting the computer, remove the **Setup CD-ROM** and keep it in a safe place.

Next, read "Loading Paper" on page 54!



- To use the printer on additional computers, refer to "Setup Additional Computers" on page 42.

1

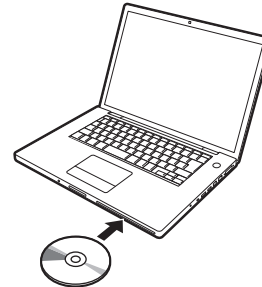


Connect the printer to the computer with a USB cable.
Make sure the printer is turned on.
A USB cable is used to send the network settings to the printer.



- The USB Port is located on the right side at the back of the printer. The lower port is for USB.

2



Turn on the computer, then insert the **Setup CD-ROM** into the CD-ROM drive.

3



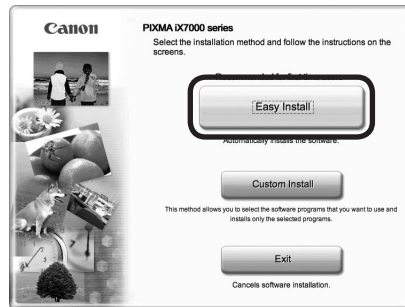
Double-click the **Setup** icon of the CD-ROM folder to proceed to the following screen. Enter your administrator name and password, then click **OK**.

If you do not know your administrator name or password, click **Help**, then follow the on-screen instructions.



- If the CD-ROM folder does not open automatically, double-click the CD-ROM icon on the desktop.

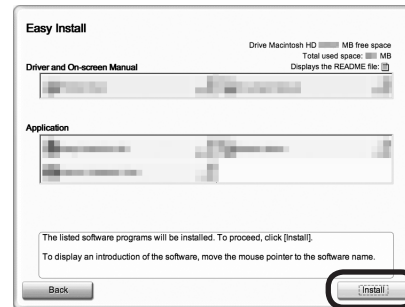
4



Click **Easy Install**.

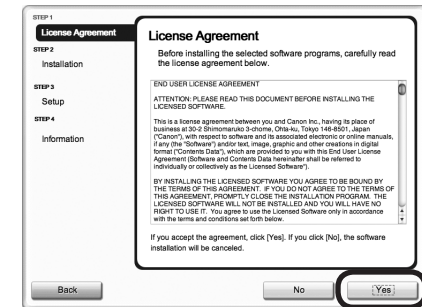
The drivers, application software, and on-screen manuals are installed all together.

5



Click **Install**.

6



Read the **License Agreement** screen carefully and click **Yes**.

Follow any on-screen instructions to proceed with the software installation.



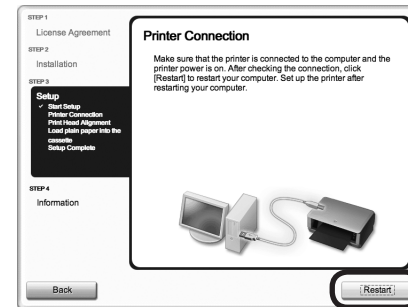
- If you want to select particular items to install, click **Custom Install**.

7



When the **Start Setup** screen appears, click **Execute**.

8

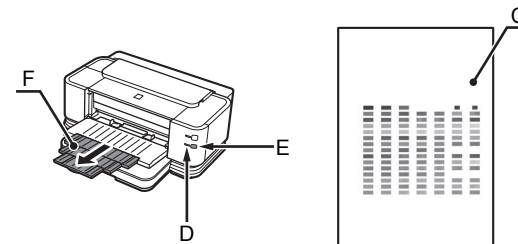
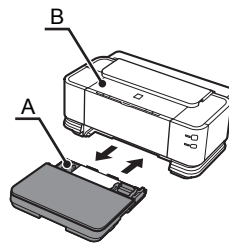
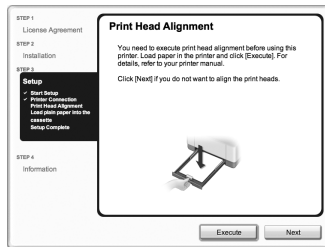


Click **Restart**.

The **Print Head Alignment** screen appears after the computer has been restarted.

Important Information for the Installation

□ Print Head Alignment



Load two sheets of A4 or Letter-sized plain paper into the Cassette (A) by referring to "Loading Paper" on page 54, then click **Execute**.

Do not open the Top Cover (B) while printing.



It takes about 5 minutes to start printing because ink replenishment is in progress.

When clear ink replenishment is in progress, × appears in the corresponding area of the ink information screen. Please wait.

When the pattern (C) shown is printed, Print Head Alignment is complete.



Wait until the pattern printing ends (about 5 minutes after printing starts).



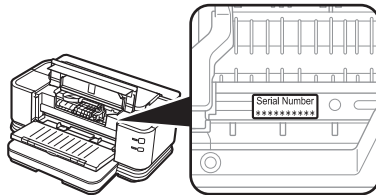
- If the **Alarm** lamp (orange) (D) flashes, press the **RESUME/CANCEL** button (E) on the printer to clear the error, then click **Next**. After the installation is complete, perform Print Head Alignment by referring to "When Printing Becomes Faint or Colors are Incorrect" in the on-screen manual: **Basic Guide**.



- Pull out the Front Tray Extension (F) beforehand.
- The pattern is printed in black and blue.

Important Information for the Installation

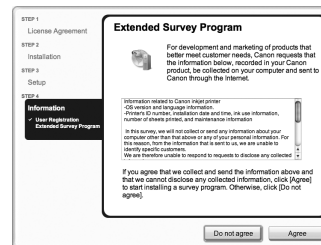
□ Necessary Information for the User Registration



The product serial number is required when registering the product. The serial number is located inside the printer (as shown in the illustration).

- When opening the Top Cover, the Print Head Holder moves automatically.

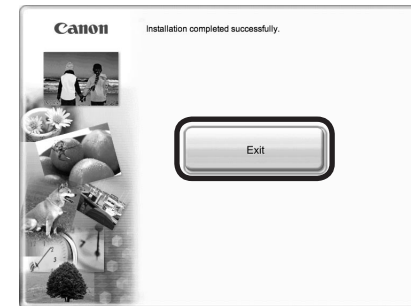
□ About Extended Survey Program



If you can agree to Extended Survey Program, click **Agree**.
If you click **Do not agree**, the Extended Survey Program will not be installed. (This has no effect on the printer's functionality.)



- The screen does not appear on Mac OS X v.10.3.9.

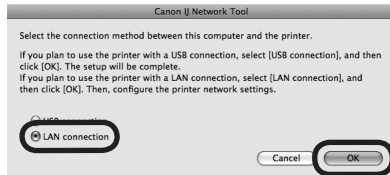


Click **Exit** to complete the installation.

Canon IJ Network Tool starts automatically.

Remove the **Setup CD-ROM** and keep it in a safe place.

10



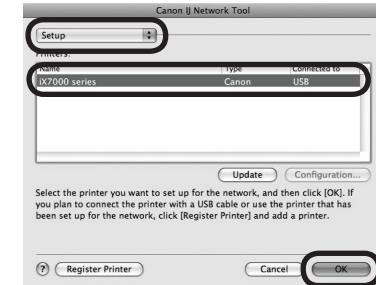
On the **Canon IJ Network Tool** screen, select **LAN connection**, then click **OK**.

- If the following screen appears



If the **Setup Preparations** screen appears, make sure that preparation is complete, then click **OK**.

11



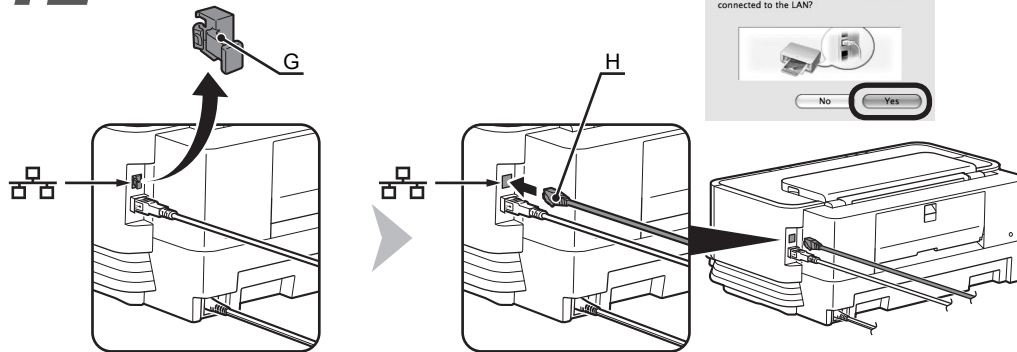
Select **Setup** in the pop-up menu, select **iX7000 series** in **Printers**, then click **OK**.

- If the above screen is not displayed, start again from step **2**. Be sure to select **LAN connection** in step **10**.



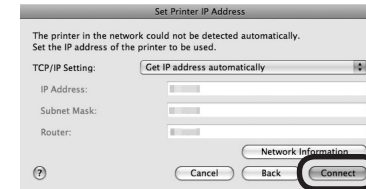
- If no printer is detected, make sure of the following, then click **Update**.
 - The printer is connected to the computer with a USB cable.
 - The printer is turned on.

12



When the above screen appears, remove the Cap (G) of the printer, connect a network device with a LAN cable (H), then click **Yes**.

- If the following screen appears



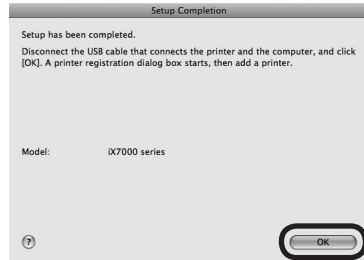
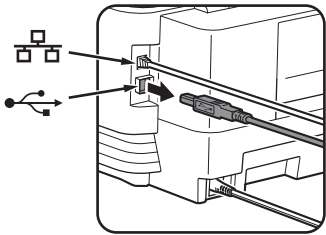
When the **Set Printer IP Address** screen appears, click **Connect**.

If the printer is detected automatically, the **Set Printer IP Address** screen does not appear.



- If no connection is established even after **Connect** is clicked, refer to "The Set Printer IP Address Screen is Displayed" in the printed manual: **Network Setup Troubleshooting**.

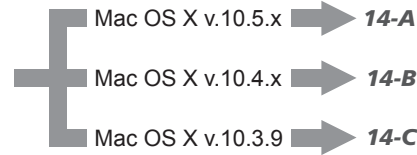
13



When the **Setup Completion** screen appears, remove the USB cable, then click **OK**.

The Printer Setup Utility will start up.

- Proceed to the section that relates to your operating system for further installation instructions.

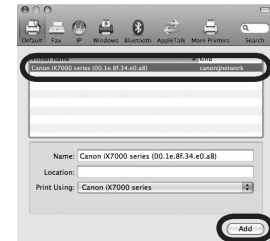


- The alphanumeric characters after **Canon iX7000 series** is the printer's Bonjour service name or MAC address.
- If the printer has not been detected, make sure of the following.
 - The printer is turned on.
 - The firewall function of any security software is turned off.
 - The printer is connected to the network device with the LAN cable.
 - The printer is not set to use access control (MAC address filtering).

14-A Mac OS X v.10.5.x

Mac OS X v.10.4.x → 14-B
Mac OS X v.10.3.9 → 14-C

1



Wait for a while, then select **Canon iX7000 series** and click **Add**.



- To use the printer on additional computers, refer to "Setup Additional Computers" on page 47.

Next, read "Loading Paper" on page 54!

14-B

Mac OS X v.10.4.x

Mac OS X v.10.3.9 ➔ 14-C

1



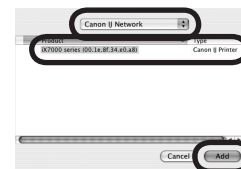
When the **Printer List** window appears, click **Add**.

2



Click **More Printers** in the **Printer Browser** window.

3



Select **Canon IJ Network** in the pop-up menu, select **iX7000 series** in the list of printers, then click **Add**.

4



Make sure that **iX7000 series** is added to the list of printers.



- To use the printer on additional computers, refer to "Setup Additional Computers" on page 47.

Next, read "Loading Paper" on page 54!

14-C

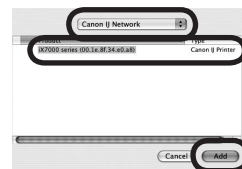
Mac OS X v.10.3.9

1



When the **Printer List** window appears, click **Add**.

2



Select **Canon IJ Network** in the pop-up menu, select **iX7000 series** in the list of printers, then click **Add**.

3



Make sure that **iX7000 series** is added to the list of printers.



- To use the printer on additional computers, refer to "Setup Additional Computers" on page 47.

Next, read "Loading Paper"
on page 54!

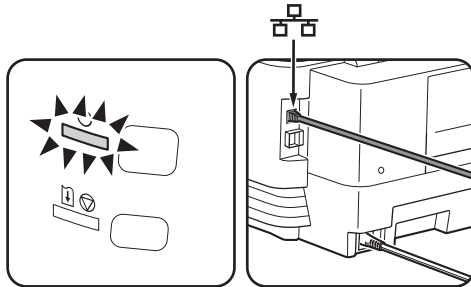
Setup Additional Computers

Windows

Macintosh

Windows

1



Make sure that the printer is turned on and that it is connected to the network with a LAN cable.



- It is not necessary to connect the printer to the computer with a USB cable.

2



Turn on the computer, then insert the **Setup CD-ROM** into the CD-ROM drive.

The setup program will start automatically.

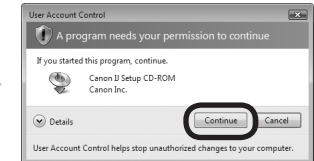
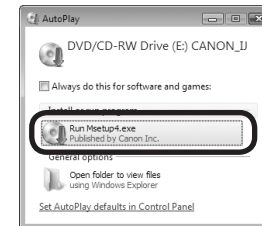


- If the program does not start automatically, double-click the CD-ROM icon in **Computer** or **My Computer**. When the CD-ROM contents appear, double-click **MSETUP4.EXE**.

3

Windows Vista

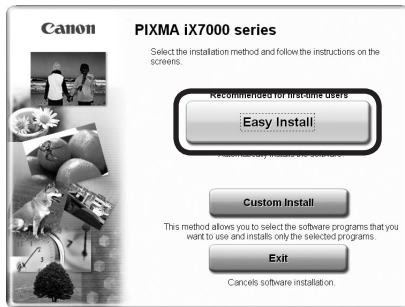
Windows XP/2000 → 4



Click **Run Msetup4.exe** on the **AutoPlay** screen, then click **Continue** on the **User Account Control** dialog box.

If the **User Account Control** dialog box reappears in following steps, click **Continue**.

4



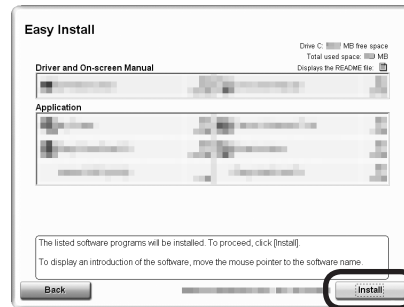
Click **Easy Install**.

The drivers, application software, and on-screen manuals are installed all together.



- If you want to select particular items to install, click **Custom Install**.

5



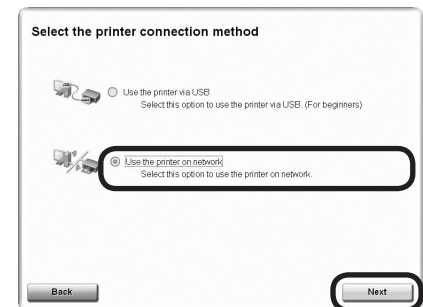
Click **Install**.



For Windows Vista/XP

- If you are using Internet Explorer 7 or later, you can use the Web print software Easy-WebPrint EX. An internet connection is required for installation. (It is also possible to install this software later.)

6



Select **Use the printer on network**, then click **Next**.



7



Read the **License Agreement** screen carefully and click **Yes**.

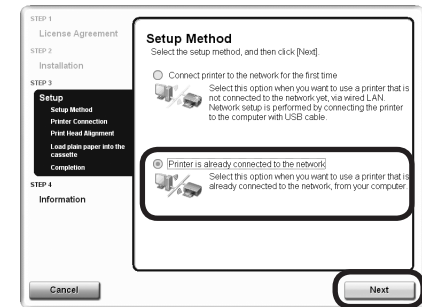
Follow any on-screen instructions to proceed with the software installation.

8



When the **Please Allow All Install Wizard Processes** screen appears, click **Next**.

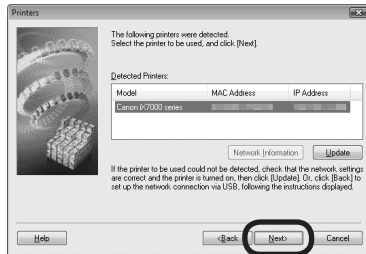
9



On the **Setup Method** screen, select **Printer is already connected to the network**, then click **Next**.

- If the above screen is not displayed, click **Cancel** and start again from step 5. Be sure to select **Use the printer on network** in step 6.

10

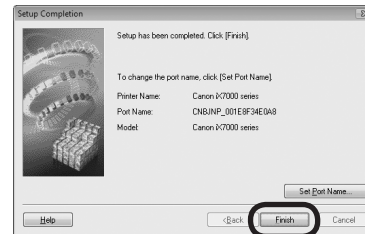


When the **Printers** dialog box appears, select the printer, then click **Next**.



- If the printer is not detected, make sure of the following, click **Update**.
 - The printer is turned on.
 - The printer is connected to the network device with the LAN cable.
- Some programs that switch the network environment depending on your system environment will enable a firewall by default. Check the settings of any such software.

11

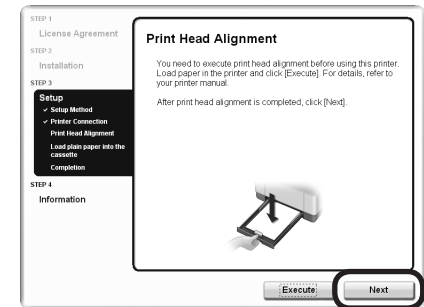


When the **Setup Completion** dialog box appears, click **Finish**.



- To change the port name, click **Set Port Name**. For details, refer to "Changing the Port Name" in the printed manual: **Network Setup Troubleshooting**.

12



When the **Print Head Alignment** screen appears, click **Next**.

Go to the next step without performing Print Head Alignment.

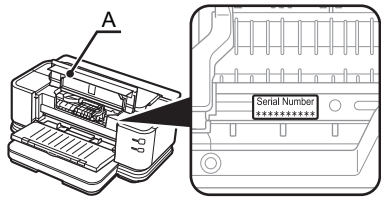
Follow any on-screen instructions to proceed with the installation.



13

Important Information for the Installation

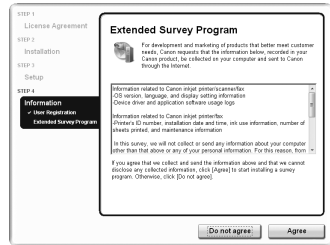
□ Necessary Information for the User Registration



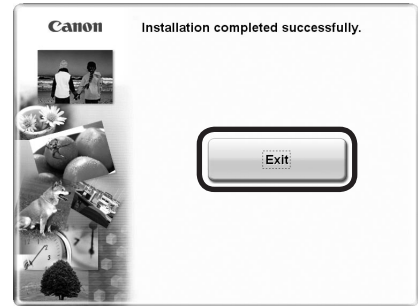
The product serial number is required when registering the product. The serial number is located inside the printer (as shown in the illustration).

- When opening the Top Cover (A), the Print Head Holder moves automatically.

□ About Extended Survey Program



If you can agree to Extended Survey Program, click **Agree**.
If you click **Do not agree**, the Extended Survey Program will not be installed.
(This has no effect on the printer's functionality.)



Click **Exit** to complete the installation.

If **Restart** is displayed, follow the instruction to restart the computer.

After restarting the computer, remove the **Setup CD-ROM** and keep it in a safe place.

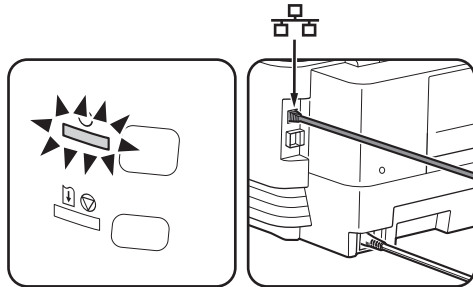
Now you can use the printer on additional computers.

Setup Additional Computers

Windows

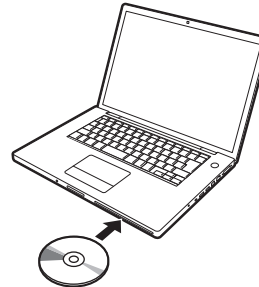
Macintosh

1



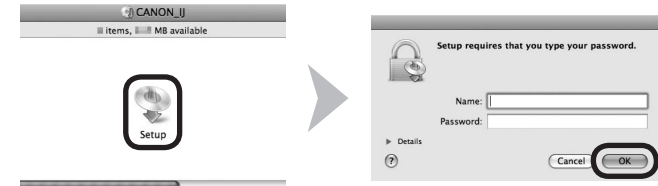
Make sure that the printer is turned on and that it is connected to the network with a LAN cable.

2



Turn on the computer, then insert the **Setup CD-ROM** into the CD-ROM drive.

3



Double-click the **Setup** icon of the CD-ROM folder to proceed to the following screen. Enter your administrator name and password, then click **OK**.

If you do not know your administrator name or password, click **Help**, then follow the on-screen instructions.

Macintosh

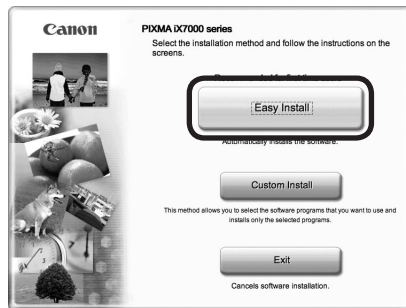


- It is not necessary to connect the printer to the computer with a USB cable.



- If the CD-ROM folder does not open automatically, double-click the CD-ROM icon on the desktop.

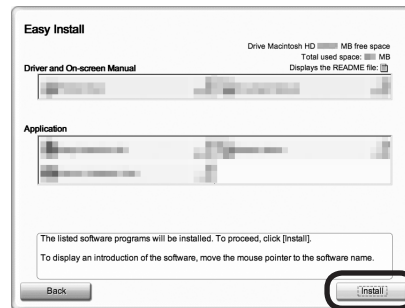
4



Click **Easy Install**.

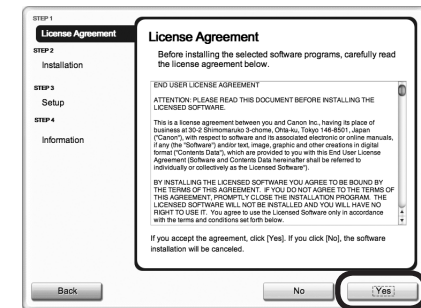
The drivers, application software, and on-screen manuals are installed all together.

5



Click **Install**.

6



Read the **License Agreement** screen carefully and click **Yes**.

Follow any on-screen instructions to proceed with the software installation.



- If you want to select particular items to install, click **Custom Install**.



When the **Start Setup** screen appears, click **Next**.

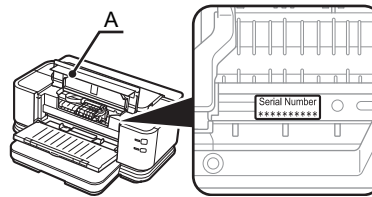
Go to the next step without performing Print Head Alignment.

Follow any on-screen instructions to proceed with the installation.



Important Information for the Installation

□ Necessary Information for the User Registration

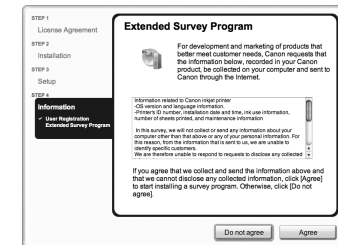


The product serial number is required when registering the product. The serial number is located inside the printer (as shown in the illustration).



- When opening the Top Cover (A), the Print Head Holder moves automatically.

□ About Extended Survey Program



If you can agree to Extended Survey Program, click **Agree**.
If you click **Do not agree**, the Extended Survey Program will not be installed.
(This has no effect on the printer's functionality.)



- The screen does not appear on Mac OS X v.10.3.9.

8

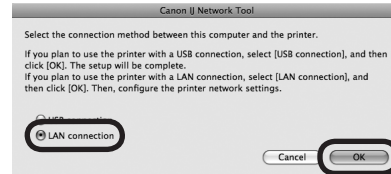


Click **Restart**.

After the computer restarts, Canon IJ Network Tool starts automatically.

Remove the **Setup CD-ROM** and keep it in a safe place.

9



On the **Canon IJ Network Tool** screen, select **LAN connection**, then click **OK**.

□ If the following screen appears



If the **Setup Preparations** screen appears, make sure that preparation is complete, then click **OK**.

10



Select **Setup** in the pop-up menu, then click **Register Printer**.

- If the above screen is not displayed, start again from step **2**. Be sure to select **LAN connection** in step **9**.

11



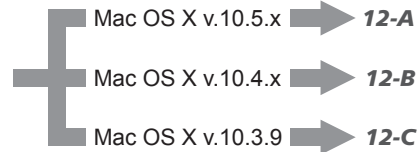
When the **Cancel Setup** screen appears, then click **Cancel**.

The Printer Setup Utility will start up.



- When the **You have no printers available**. screen appears, click **Cancel**.

- Proceed to the section that relates to your operating system for further installation instructions.



- The alphanumeric characters after **Canon iX7000 series** is the printer's Bonjour service name or MAC address.
- If the printer has not been detected, make sure of the following.
 - The printer is turned on.
 - The firewall function of any security software is turned off.
 - The printer is connected to the network device with the LAN cable.
 - The printer is not set to use access control (MAC address filtering).

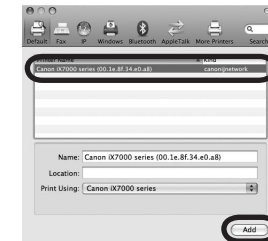
12-A

Mac OS X v.10.5.x

Mac OS X v.10.4.x ➔ **12-B**

Mac OS X v.10.3.9 ➔ **12-C**

1



Wait for a while, then select **Canon iX7000 series** and click **Add**.

Now you can use the printer on additional computers.

12-B

Mac OS X v.10.4.x

Mac OS X v.10.3.9 ➔ 12-C

1



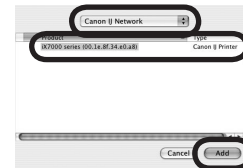
When the **Printer List** window appears, click **Add**.

2



Click **More Printers** in the **Printer Browser** window.

3



Select **Canon IJ Network** in the pop-up menu, select **iX7000 series** in the list of printers, then click **Add**.

4



Make sure that **iX7000 series** is added to the list of printers.

Now you can use the printer on additional computers.

12-C

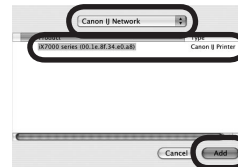
Mac OS X v.10.3.9

1



When the **Printer List** window appears, click **Add**.

2



Select **Canon IJ Network** in the pop-up menu, select **iX7000 series** in the list of printers, then click **Add**.

3

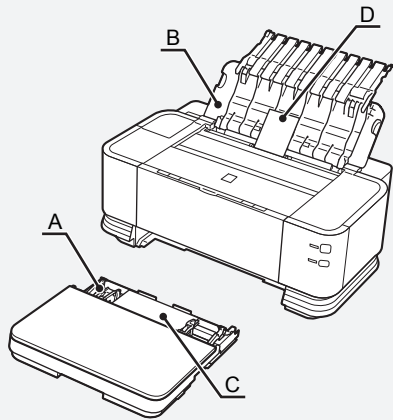


Make sure that **iX7000 series** is added to the list of printers.

Now you can use the printer on additional computers.

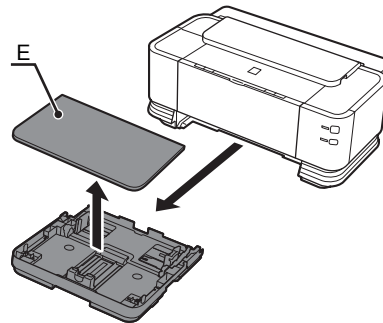
Loading Paper

This section explains how to load paper in the Cassette (A) and the Rear Tray (B).



The Cassette supports plain paper (C) only. To print photo paper / Hagaki (D), be sure to load it in the Rear Tray.

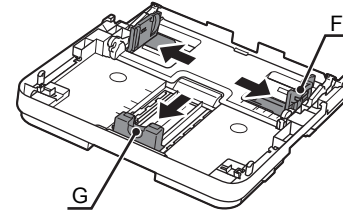
1



Pull out the Cassette slowly with both hands, then remove the Cassette Cover (E).

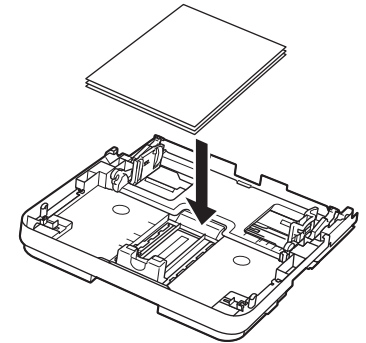
Pull the Cassette out slowly with both hands until it stops, then lift its front slightly and pull it out.

2



Pinch the Paper Guides (F) and (G), then move them to both edges.

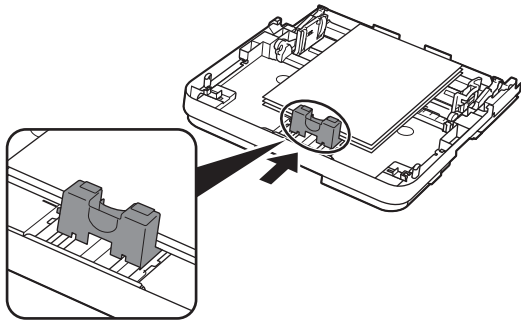
3



Load plain paper.

Load paper with the printing side facing down.

4



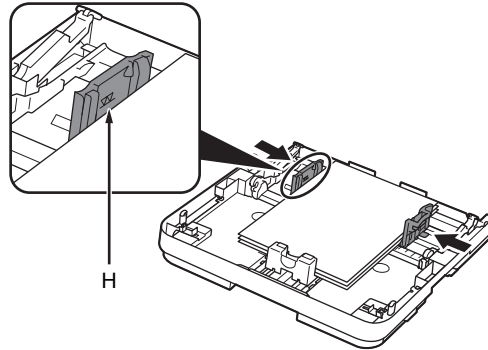
Pinch the Paper Guide, then align it with the paper size.

The Paper Guide will stop when it aligns with the corresponding mark of paper size.



- There may be a little space between the Paper Guide and the paper stack.

5



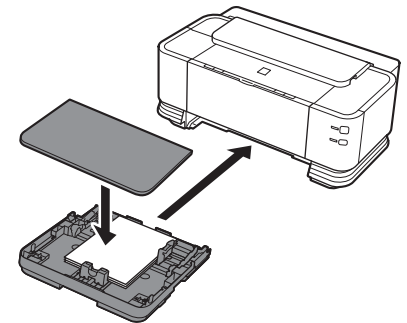
Pinch the Paper Guide on the right, then slide it to set the Paper Guides against both edges of the paper.

Make sure that the paper stack does not exceed the line (H).



- To print on specialty paper, be sure to load it in the Rear Tray.

6

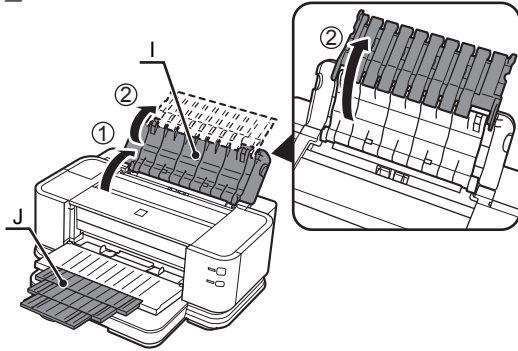


Attach the Cassette Cover, then insert the Cassette against the back end of the printer.



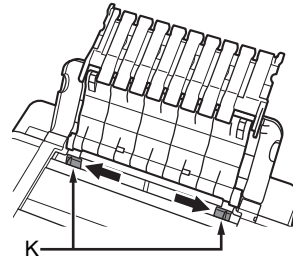
- Pull and extend the Cassette to load paper larger than A4.
For details on how to load paper, refer to "Loading Paper in the Cassette" in "Loading Paper" in the on-screen manual: **Basic Guide**.

7



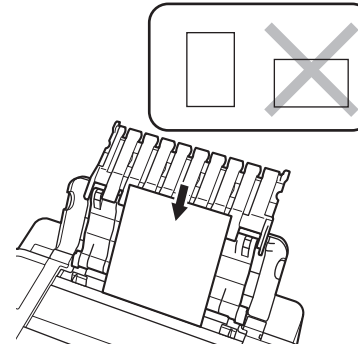
Open the Paper Support (I).

8



Move the Paper Guides (K) to both edges.

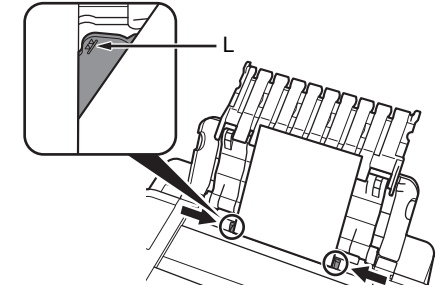
9



Load paper in the center of the Rear Tray.

Load paper in portrait orientation with the printing side facing up.

10



Slide the left and right Paper Guides against both edges of the paper.

Make sure that the paper stack does not exceed the line (L).



- Pull out the Front Tray Extension (J) beforehand.

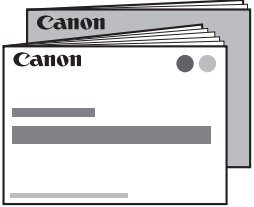



- For details on media sizes and types you can use, refer to "Loading Paper" in the on-screen manual: **Basic Guide**.

Preparation for printing is now complete!

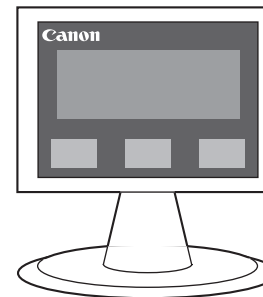
Introduction of Manuals

The following manuals are supplied with the printer.



 **Getting Started**
(this manual)
Network Setup
Troubleshooting

Describes how to set up and use your printer. Introduces the printer and its functions, the included manuals and application software.



on-screen manuals



Basic Guide

Describes basic operations and media, and gives an introduction to other functions available.



Advanced Guide

Describes various operating procedures to make full use of printer.



Troubleshooting

Describes troubleshooting tips for problems you may encounter when using the printer.

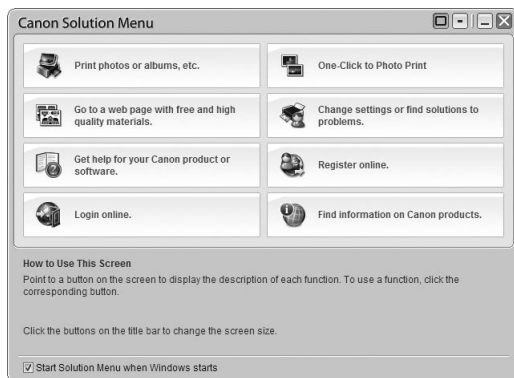
For details on opening the on-screen manuals, refer to page 58

Solution Menu

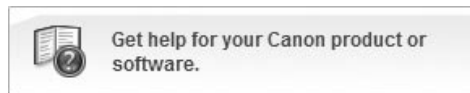
Solution Menu is a gateway to functions and information that allow you to make full use of the printer!



Example: Windows Vista



*The buttons displayed vary depending on the country or region of purchase.



Click this button to open the on-screen manuals.



Click this button to access the website containing free printing materials exclusive for the printer. (Internet connection is required.)

Open various applications and on-screen manuals with a single click.

You can start Solution Menu from the **Canon Solution Menu** icon on the desktop (Windows) or on the Dock (Macintosh).

If you have a problem with printer settings, click the **Change settings or find solutions to problems.** in Solution Menu to open My Printer (Windows only).

Utilizing the Printer

Use applications supplied with the printer to easily enhance documents and photos, print on both sides of paper or print in A3 size.

Also, it is useful to feed paper from the Cassette when printing a large number of copies (of conference materials, documents, etc.).

For details on how to use the application software and the printer, refer to the on-screen manuals: **Basic Guide** and **Advanced Guide**.



Getting Help from Canon

Email Tech Support — www.canontechsupport.com

Toll-Free Live Tech Support— (1-800-828-4040) under warranty

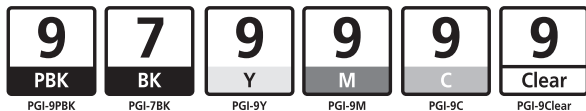
This option provides live telephone technical support, free of service charges,

Monday-Friday (excluding holidays), during the warranty period.

Telephone Device for the Deaf (TDD) support is available at (1-866-251-3752).

Ordering Information

The following ink tanks are compatible with this printer.



Order

PGI-9PBK	1034B002
PGI-7BK	2444B002
PGI-9Y	1037B002
PGI-9M	1036B002
PGI-9C	1035B002
PGI-9Clear	2442B002

Call 1-800-OK-CANON to locate a dealer near you, or visit the Canon eStore at www.canonstore.com

CANON U.S.A. INC.

One Canon Plaza, Lake Success, NY 11042 U.S.A.

www.usa.canon.com

Free Manuals Download Website

<http://myh66.com>

<http://usermanuals.us>

<http://www.somanuals.com>

<http://www.4manuals.cc>

<http://www.manual-lib.com>

<http://www.404manual.com>

<http://www.luxmanual.com>

<http://aubethermostatmanual.com>

Golf course search by state

<http://golfingnear.com>

Email search by domain

<http://emailbydomain.com>

Auto manuals search

<http://auto.somanuals.com>

TV manuals search

<http://tv.somanuals.com>