



PIXMA iP7200 series

Setup Guide

Setup Guide

This guide provides information for setting up a network connection for the printer.

Network Connection

Wireless Connection

Preparation for Connection
Connection Using WPS

Troubleshooting

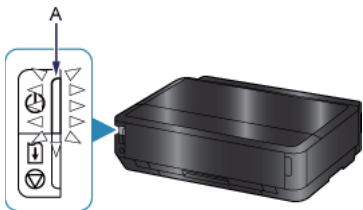
Network Connection

Wireless Connection

1 Preparation for Connection

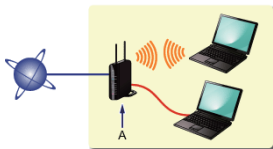
Before Starting Wireless Connection Setup

1. Make sure that the printer is turned on.
If the power is on, the POWER lamp (A) will be lit.



Notes on Wireless Connection

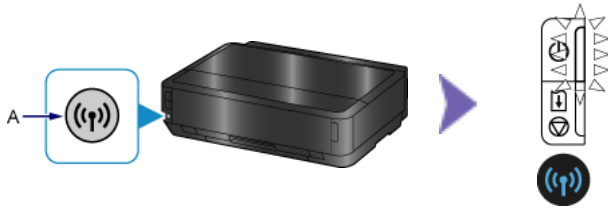
- Make sure that the computer is connected to the access point (A) (or wireless network router) you want to connect your printer to.



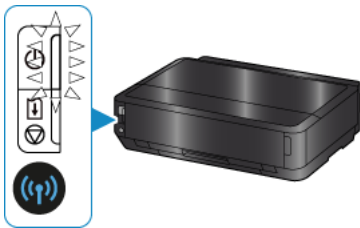
- The configuration, router functions, setup procedures and security settings of the network device vary depending on your system environment. For details, refer to the manual of your network device or contact its manufacturer.
- Check if your device supports IEEE802.11n, 802.11g or 802.11b.
- If your device is set to the "IEEE802.11 n only" mode, WEP or TKIP cannot be used as a security protocol. Change the security protocol for your device to something other than WEP and TKIP or change the setting to something other than "IEEE802.11 n only."
- For office use, consult your network administrator.
- Take added care when connecting to a network that is not protected with security measures, as there is a risk of disclosing data such as your personal information to a third party.
- An "Ad-hoc connection," which establishes a direct connection to the computer over a wireless connection without an access point, is not supported. Be sure to prepare an access point.

2 Connection Using WPS

1. Press and hold the Wi-Fi button (A) on the printer when you are ready to press the button on the access point.



2. Make sure that the (blue) Wi-Fi lamp flashes quickly and the POWER lamp is lit as shown in the illustration above, then press and hold the button on the access point within 2 minutes.
3. Make sure that the (blue) Wi-Fi lamp and POWER lamp are lit.



The network connection setup is now complete.

Troubleshooting

WPS

■ When the (blue) Wi-Fi lamp flashes slowly and the (orange) Alarm lamp is lit:



- Press the button on only one access point.
- Check the security settings of the access point.

After checking the above points, wait for a while and configure wireless connection setting again.

For details on how to check the security settings of the access point, refer to the manual supplied with the access point or contact its manufacturer.

■ When the (blue) Wi-Fi lamp flashes quickly and the (orange) Alarm lamp is lit:



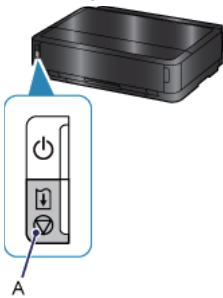
- Is the network device (router, etc.) turned on? If the network device is already turned on, turn it off, then turn it back on.
- Are the computer and network device configured?
- Are the access point and printer installed in an open space where wireless communications are possible?
- Is the access point operating in IEEE802.11n (2.4 GHz), IEEE802.11g or IEEE802.11b?

Wait for a while, then bring the access point and printer close to each other, and configure wireless connection settings again within a specified time.

For details on how to check the settings of the access point, refer to the manual supplied with the access point or contact its manufacturer.

■ To configure wireless connection settings again

To configure wireless connection settings again, press the RESUME/CANCEL button (A).



Free Manuals Download Website

<http://myh66.com>

<http://usermanuals.us>

<http://www.somanuals.com>

<http://www.4manuals.cc>

<http://www.manual-lib.com>

<http://www.404manual.com>

<http://www.luxmanual.com>

<http://aubethermostatmanual.com>

Golf course search by state

<http://golfingnear.com>

Email search by domain

<http://emailbydomain.com>

Auto manuals search

<http://auto.somanuals.com>

TV manuals search

<http://tv.somanuals.com>