

**Canon**

# S830D

COLOUR BUBBLE JET PRINTER



*I can...*

...get brilliant  
photo prints  
with or without  
a computer.

*You can...*

# Canon

You can...

USE THE OPTIONAL LCD  
SCREEN TO PREVIEW  
YOUR DIGITAL CAMERA'S  
MEMORY CARD IMAGES

PRINT DIRECTLY FROM  
COMPATIBLE CANON  
DIGITAL CAMERAS<sup>1</sup>



PRINT QUICKLY AND  
EASILY VIA THE FRONT  
CONTROL PANEL

GET HIGH SPEED, HIGH  
DEFINITION PHOTO PRINTS

CREATE A4 AND 6" x 4"  
BORDERLESS PHOTO PRINTS



PRODUCE COLOUR  
THAT LASTS UP TO  
25 YEARS<sup>2</sup>



# Professional quality

## PRINTING OR PROCESSING.

The S830D has been designed specifically with digital photography in mind, enabling you to print high quality images directly from compatible Canon digital cameras.<sup>1</sup> It's fast, convenient and delivers outstanding photographic results.

Combining a 6-colour high/low density ink system with Advanced MicroFine Droplet Technology, the S830D delivers resolution up to 2400 dpi, with accurate, vibrant colour. And speed is not sacrificed for quality. The S830D will produce high-resolution A4 photos in as little as two minutes, while a postcard sized photo takes around one.<sup>3</sup>



Accepts a wide range of PC card compatible media.<sup>4</sup>

Directly connect a compatible Canon digital camera!



## THREE WAYS TO PRINT BRILLIANT PHOTOS.

**1. Camera Direct Printing.**<sup>1</sup> Most of the latest Canon Digital cameras also connect directly to the S830D via a special Bubble Jet Direct cable included with the printer. You control the printer from the camera, choosing photos, size and format on the camera's LCD screen, before printing your selection – no PC required.

**2. Memory Card Printing.** Using a compatible adaptor,<sup>4</sup> insert your digital camera's memory card into the S830D, and you're able to use the printer's control panel to crop and size your images, before sending them directly to print. With the optional LCD screen, you can also preview your shots prior to printing.

**3. Computer Printing.** The S830D connects to USB PC and Macintosh systems to print images you've scanned, or previously stored from digital cameras. Of course it's also more than capable of printing high quality text and colour business documents.

Optional CV-100 LCD screen.



Use the control panel to select paper type, layout and image size.

# S830D

# colour prints with or

## SHARPER IMAGES.

The S830D employs a high density 1536 nozzle print head and Advanced MicroFine Droplet Technology. This allows each microscopic 4-picolitre ink droplet to be consistently delivered with precision, ensuring high definition 2400 x 1200 dpi without graininess.



## SEEING IS BELIEVING.

6 Colour System. In addition to the four regular CMYK inks, this printer uses low-density, Photo-Cyan and Photo-Magenta, to achieve a broader tonal range within a single pixel. The result is truly professional photo prints even with traditionally difficult areas such as highlights and skin tones.

## LASTING IMAGES.

The S830D is designed not simply to produce impressive photographs, but to produce prints that maintain their quality for years to come.

Canon's Vivid Colour mode greatly expands your available colour range. Using the printer's six-colour system, enhanced cyan based tones such as greens and blues are possible, allowing you to achieve much truer colours.

These results are further improved when using Canon's Photo Paper Pro. This photographic style, four-layer paper offers improved quality and performance for superior printing, with higher glossiness, enhanced colour reproduction, quicker drying and better water resistance. Simulated tests have shown that our inks, when printed on Canon's Photo Paper Pro, retain their light fastness for up to 25 years.<sup>2</sup>

## FULL-BLEED 'EDGE-TO-EDGE' PHOTOS.

The S830D allows user adjustable 'overprinting' of images by up to 5mm to produce 6" x 4" or A4 sized full-bleed photographs.<sup>7</sup>



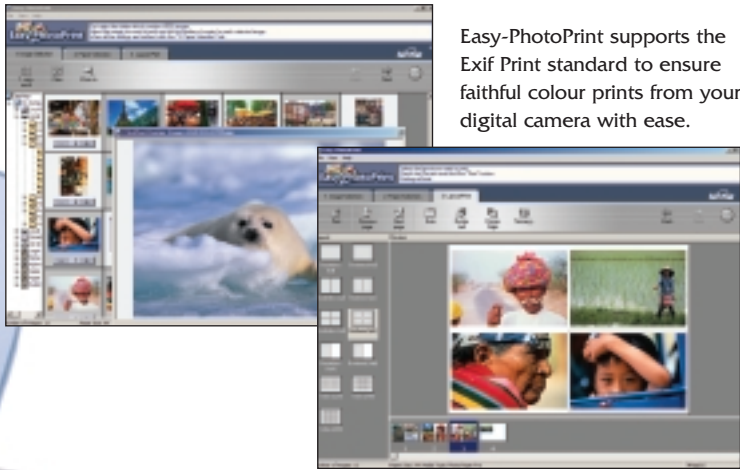
25  
years later



Photo Paper Pro.

Conventional

# without a computer.



Easy-PhotoPrint supports the Exif Print standard to ensure faithful colour prints from your digital camera with ease.

## SIMPLICITY THROUGH SOFTWARE.

You don't have to be a professional to get professional looking results – the S830D comes with a range of software to quickly and simply produce high quality photographs.

Easy-PhotoPrint<sup>5</sup> supports Exif Print, the industry standard for digital camera prints which allows Exif compatible digital cameras to record shooting information such as exposure and flash settings along with the scene. Easy-PhotoPrint understands these settings and makes adjustments to the print, without altering your original file, to faithfully match the scene as it was recorded.

Photo Optimiser PRO, a Canon driver feature, automatically adjusts for defects in exposure, highlights and shadows, without adjusting the original image file – ideal for older scanned images.

Even better, Easy-PhotoPrint and Photo Optimiser PRO are built into the S830D direct print control panel, so you can make use of Canon's photographic printing software expertise without even using your computer. Of course, this great technology is also included on CD for use when printing from your PC.<sup>5</sup>

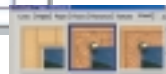
The S830D also includes Canon's ZoomBrowser EX, featuring PhotoStitch and PhotoRecord.<sup>6</sup> This simple to use software lets you manage your image library as well as merge photos into seamless panoramas or automatically layout professional looking electronic and printable photo albums.

## IMPROVED ECONOMY.

Because each colour is contained in its own tank, ink wastage is eliminated, keeping costs to a minimum. The print driver also alerts you when ink levels are getting low, so you'll avoid running out in the middle of a print.



PhotoRecord creates special effects, borders and background textures.



Use PhotoStitch to join photos together for panoramic vistas.

*You can...*

**Canon**

# Specifications

# S830D

Separately replaceable ink tanks.



From left: BCI-6BK, BCI-6PC, BCI-6PM, BCI-6C, BCI-6M, BCI-6Y



COLOR BUBBLE JET

Printing Method  
Paper Handling  
Paper Types and Capacity

Paper Sizes  
Plain Paper Weight

Printing Speed

Resolution  
Print Width

Interface  
Print Head  
Separate Ink Tanks Included

Acoustic Noise Level  
Operating Environment

Power Source

Power Consumption

Dimensions

Weight  
Included as Standard

Compatible Memory Cards

Software

Print Function File Format

DPOF Functions

Supported Cameras

DPOF Functions

Print Resolution

Optional Image Viewer

Thermal Bubble Jet with Advanced MicroFine Droplet Technology™

Automatic feed – Relay Feeding System

**Plain Paper:** 100 sheets max (64gsm), **High Resolution Paper HR-101N:** 80 sheets, **Transparencies CF-102:** 30 sheets max, **Envelopes:** 10 max (European DL), **Glossy Photo Paper GP-301:** 1 sheet, **Photo Paper Pro PR-101:** 1 sheet, **Matte Photo Paper MP-101:** 10 sheets, **Photo Paper Plus Glossy PP-101:** 1 sheet, **Photo Paper Pro PC-101S 6" x 4" Cards:** 20 sheets, **High Gloss Photo Film HG-201:** 1 sheet, **Glossy Photo Card FM-101:** 20 sheets, **T-shirt Transfers TR-201:** 1 sheet, **Banner Paper:** 6 sheets

A5, B5, A4, Letter, Legal, European DL, Banner, Photo Cards (6" x 4")

Automatic feed: 64 – 105gsm (Maximum paper weight/Canon Photo paper Plus Glossy (PP-101): 270g/m<sup>2</sup>)

**Monochrome:** up to 4 ppm for black text

**Colour:** up to 4 ppm for text and colour graphics

**Photo PR-101 6" x 4":** Standard with border approx. 50 sec

2400 x 1200 dpi

203.2mm (max) with borders

Borderless photo printing 216mm (max)

USB 2.0 Full Speed and PCMCIA Type II compliant slot. (parallel not supported)

256 nozzles for each colour. Permanent, user installable type

**BCI-6BK:** Black ink tank, **BCI-6C:** Cyan ink tank,

**BCI-6M:** Magenta ink tank, **BCI-6Y:** Yellow ink tank,

**BCI-6PC:** Photo Cyan ink tank, **BCI-6PM:** Photo Magenta ink tank.

Approx. 37dB (A) in best quality mode

**Temperature:** 5°C to 35°C

**Humidity:** 10 to 90% RH with no condensation

**Australia:** AC 100-127V, 220-240V

**Standby:** Approx .8W

**Printing:** Approx 29W

430mm x 301mm x 188mm (W x D x H )

Approx 5.8kg

S830D Bubble Jet printer, S830D Print Head, BCI-6M, BCI-6C, BCI-6Y, BCI-6BK, BCI-6PC and BCI-6PM ink tanks. Setup Software and User's Guide CD including e-manual and printer drivers supporting Windows 98, Windows Me, Windows 2000 and Windows XP, and Mac OS 8.6 to 9.x and Mac OS X<sup>7</sup> (10.1 only) via USB port. Also includes PhotoRecord, PhotoStitch, 3D PhotoPrint, ZoomBrowser EX,<sup>6</sup> Easy-PhotoPrint,<sup>5</sup> Easy-WebPrint<sup>5</sup> and Photo Application Guide. Quick set up guide, Power cable, Warranty Card.

**S830D Direct Print (Built-in Card Reader) Functions**

PCMCIA Type II compliant. Compact flash card/Smart media/Memory stick/SD card/Microdrive Multimedia card/Flash ATA card using appropriate PC CARD adaptors – not supplied by Canon. NOTE: Only CompactFlash PC CARD adaptor is included with printer

Canon driver software included. PC Function: PC Read/Write from card

JPEG, TIFF, DPOF (Digital Print Order Format) compliant. Exif 2.2

Index Prints (multiple reduced-size images per page), Set number of copies, Select images for printing, Include date on print, Include file number on print

**S830D Direct Camera Print Functions**

Canon PowerShot S30, S40, S45, IXUS V2, IXUS V3, IXUS 330, PowerShot G2<sup>8</sup> and PowerShot G3. (Bubble Jet direct cable included with printer)

Same functions as Direct Print from memory card

1200 x 1200 dpi (single mode)

**S830D Optional Accessories**

CV-100 1.5" Colour TFT LCD display for viewing images before printing



PR-101 Photo Paper Pro and PR-101 6" x 4" photo cards.

**Footnote 2.** 25 year fading simulation test (Test conditions) In-house Evaluation on Photo Paper Pro. Temperature: 24°C Humidity 60%. Light Source: White fluorescent light 70,000 lux. Layer of air and 2mm-thick glass on the sample. Presumed conditions: Assuming one day's illumination as 500lux x 10 hours. In-house evaluation criteria (Based ISO). Single colour/Composite colour: A colour change has occurred if the density is under 70% (OD:1.0->0.7). Process Bk: The fading ratio between each colour is within 15% and a colour change has occurred if the density is under 70% (OD:1.0->0.7) Precautions on storing printed images. The 25 years light-fastness may not be achieved depending on storage conditions. The expressed number of years is the result of simulated tests conducted by Canon Inc and is not guaranteed. This number of years does not apply for paper fading or durability. Allow ink to dry completely after printing and before storage. Store images in albums, clear plastic folders or glass frames to avoid exposure to open air. Never store printed images in locations subject to high temperatures, high humidity or direct sunlight. Store prints at normal room temperature.



THE ONE YEAR WARRANTY CAN BE UPGRADED TO 3 YEARS FOR A MINIMAL COST AND IS BACKED BY CANON'S CUSTOMER CARE INFO-LINE SUPPORT. DRIVER UPDATES AND TECHNICAL SUPPORT ARE ALSO AVAILABLE FROM OUR WEBSITES – [www.canon.com.au](http://www.canon.com.au) OR [www.canon.co.nz](http://www.canon.co.nz)

FOR MORE INFORMATION PHONE PRE-SALES ON 1800 021 167 (Australia) or 0800 222 666 (New Zealand).

You can...

**Canon**

## Free Manuals Download Website

<http://myh66.com>

<http://usermanuals.us>

<http://www.somanuals.com>

<http://www.4manuals.cc>

<http://www.manual-lib.com>

<http://www.404manual.com>

<http://www.luxmanual.com>

<http://aubethermostatmanual.com>

Golf course search by state

<http://golfingnear.com>

Email search by domain

<http://emailbydomain.com>

Auto manuals search

<http://auto.somanuals.com>

TV manuals search

<http://tv.somanuals.com>