

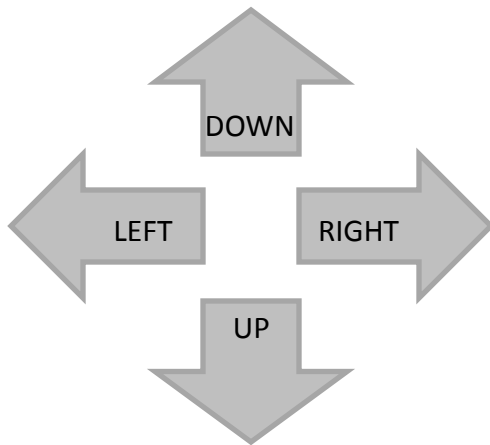


Obtaining Your Network Key

PIXMA MP990 / PIXMA MX640 / PIXMA MP560

Mac OS

Navigation Tips for Macintosh Users



To navigate this guide, please use the arrows on the MAC keyboard or use the PAGE UP and Page DOWN keys.



Obtaining Your Network Key

PIXMA MP990 / PIXMA MX640 / PIXMA MP560

Mac OS

Introduction	4
Download the Canon PIXMA Wireless Setup Assistant	5
Using the Canon PIXMA Wireless Setup Assistant	7
Troubleshooting	12

Introduction

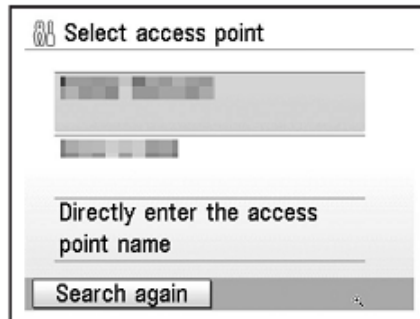
Introduction

If you are unable to proceed past the **Access Points** screen during wireless setup because the required Network Key is not known, you may be able to retrieve the information using the **Canon PIXMA Wireless Setup Assistant**.

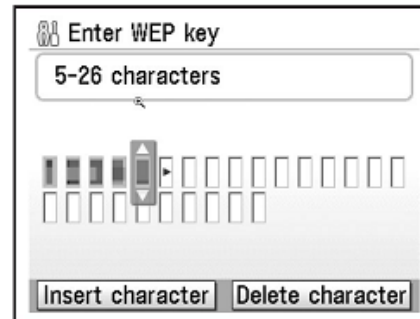
IMPORTANT: When you do not need this tool anymore, drag the file in the Trash, and delete it.

NOTE: The Wireless Setup Assistant is supported on Mac OS X 10.4 or greater

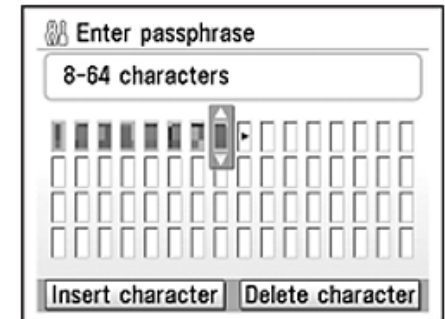
The screen for selecting access point.



The screen for entering WEP key.



The screen for entering passphrase.



Download the Canon PIXMA Wireless Setup Assistant

Download the Canon PIXMA Wireless Setup Assistant

To use the machine by connecting it to a computer, software including the drivers needs to be copied (installed) to the computer's hard disk. The installation process takes about 20 minutes. (The installation time varies depending on the computer environment or the number of applications to be installed.)

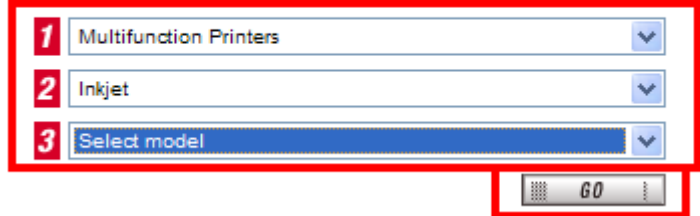
Step One

Go to the Canon USA Download Library
[Click here to go to the Canon USA download library](#)

Step Two

Select **Multifunction Printers** in the first menu dropdown, **Inkjet** in the second and your model in the third. Click **Go**.

PRODUCT MENU
Please choose the model from the dropdown menus below:



The screenshot shows a web form titled 'PRODUCT MENU' with the instruction 'Please choose the model from the dropdown menus below:'. There are three dropdown menus, each with a red box containing a number (1, 2, or 3) to its left. The first dropdown menu is labeled '1 Multifunction Printers', the second is '2 Inkjet', and the third is '3 Select model'. Below the dropdown menus is a 'GO' button with a red border.

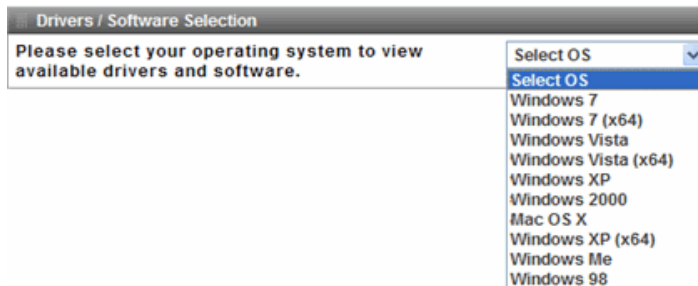
1	Multifunction Printers	▼
2	Inkjet	▼
3	Select model	▼

GO

Download the Canon PIXMA Wireless Setup Assistant

Step Three

In the **Drivers / Software Selection** section, select your operating system in the **Select OS** dropdown menu.



Step Four

In the **Software** section, click the link to download the file **CanonAPChkTool**.

Canon PIXMA Wireless Setup Assistant (Macintosh)	1.0.0	1.40 MB	10/16/2009
CanonAPChkTool_osx100ben.dmg			

Step Five

On the next screen, read the information and instructions and click **I Agree - Begin Download**

Choose to "Save" the file. **Write down the file name and the location to where the file is being saved.**

Using the Canon PIXMA Wireless Setup Assistant

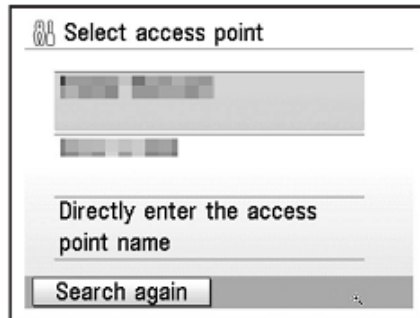
Using the Canon PIXMA Wireless Setup Assistant

Step One

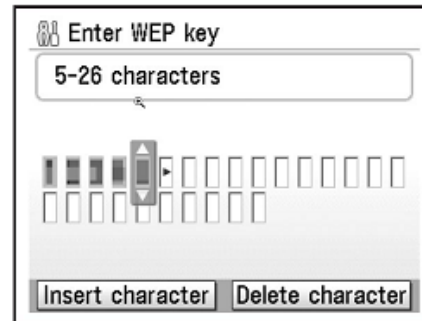
Display the window for selecting access point using the buttons on the printer.

Please refer to the Getting Started Guide if you are unable to display the below window on the LCD screen.

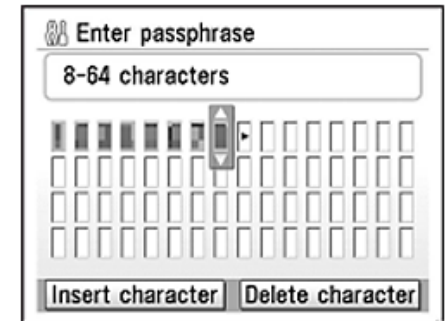
The screen for selecting access point.



The screen for entering WEP key.



The screen for entering passphrase.



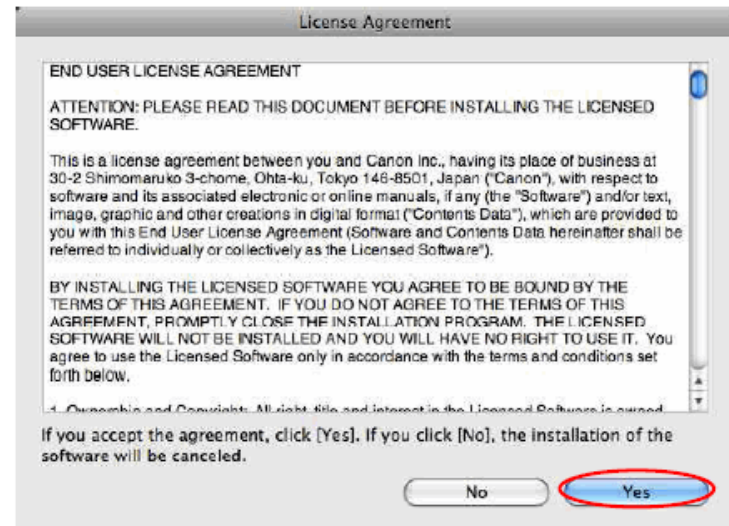
Using the Canon PIXMA Wireless Setup Assistant

Step Two

Run the downloaded tool "Wireless Setup Assistant " that you downloaded to the computer by double clicking its icon.

Step Three

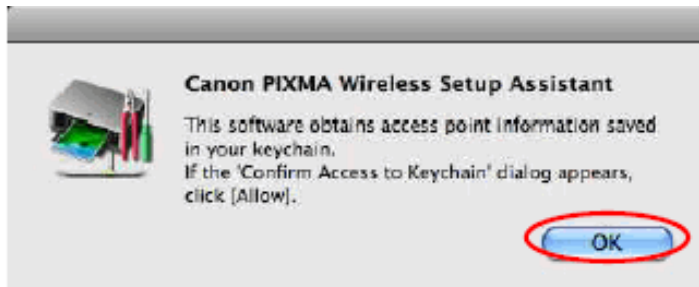
Read the License Agreement, and then click **Yes** when you accept the agreement.



Using the Canon PIXMA Wireless Setup Assistant

Step Four

When the following dialog is displayed, click **OK**.



Step Five

1. When the "Confirm Access to Keychain" dialog is displayed, click **Allow Once** in Mac OS X v10.4, **Allow** in Mac OS X v10.5/v10.6.
2. If the dialog is displayed more than once, click the above-mentioned button in each dialog.
3. **Do not click Always Allow**, the information will not be obtained properly.



<Mac OS X v10.4>



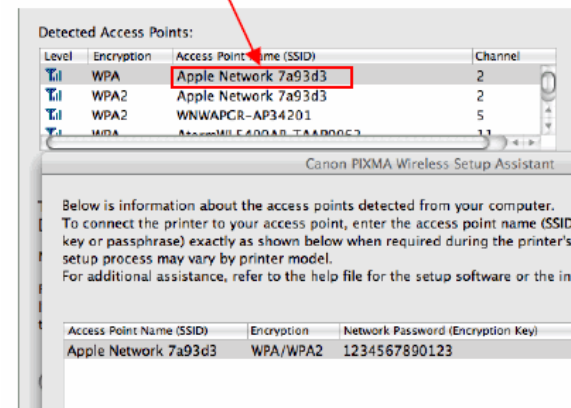
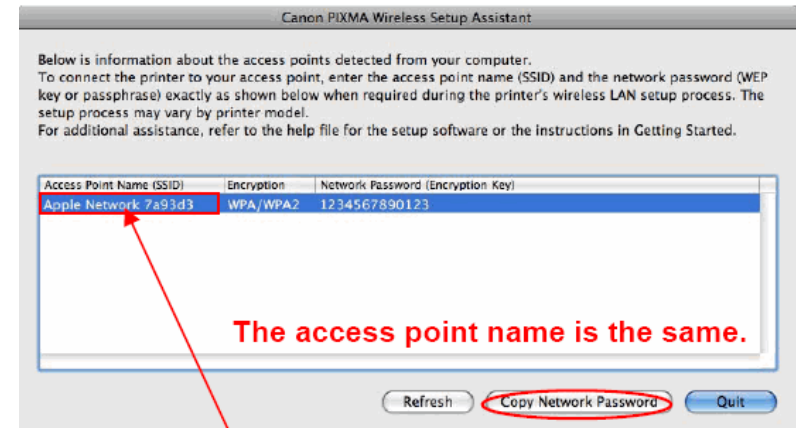
<Mac OS X v10.5/v10.6>

Using the Canon PIXMA Wireless Setup Assistant

Step Six

1. The "Canon PIXMA Wireless Setup Assistant" tool is launched.
2. Confirm that the same access points are listed in the Assistant and Access Point windows.
3. Write down the Network Password of the access point.

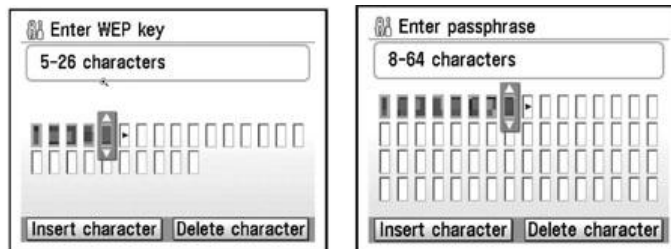
NOTE: The Network Password may be displayed with texts of the alphabets from A to F (base 16number). Write down it as-is.



Using the Canon PIXMA Wireless Setup Assistant

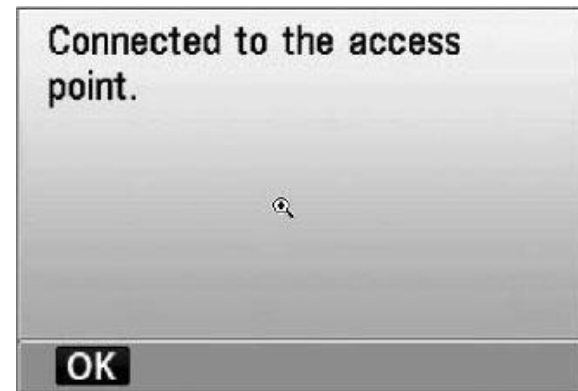
Step Seven

1. In the window for selecting access point of the printer unit, select the access point specified in the step 4, then click **OK**.
2. When the window for entering the network key is displayed, enter the key you copied in Step Six.
3. Click **OK**.



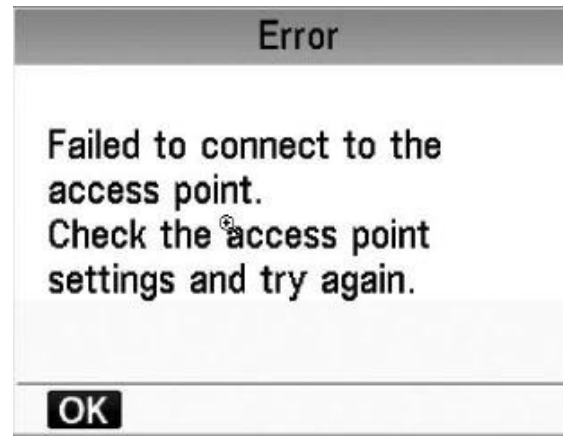
Step Eight

When the setup is completed, the "Setup Complete" dialog is displayed, proceed with the remainder of the setup as described in the Getting Started Guide.



Troubleshooting

If the following error message below is displayed.



The entered network key may not match with the access point you specified.

1. Press the Set button
2. You will return to the screen for entering the network key.
3. Then repeat Steps Six and Seven.

Free Manuals Download Website

<http://myh66.com>

<http://usermanuals.us>

<http://www.somanuals.com>

<http://www.4manuals.cc>

<http://www.manual-lib.com>

<http://www.404manual.com>

<http://www.luxmanual.com>

<http://aubethermostatmanual.com>

Golf course search by state

<http://golfingnear.com>

Email search by domain

<http://emailbydomain.com>

Auto manuals search

<http://auto.somanuals.com>

TV manuals search

<http://tv.somanuals.com>