

# Canon



## GRAPHIC ARTS SOLUTIONS



**imagePROGRAF W8400 PRINTER  
WITH COLORTRAC SCANNER SYSTEM\***

*\*This solution is also available with the imagePROGRAF W8400D and imagePROGRAF W6400 models.*

## LARGE-FORMAT SOLUTIONS

### imagePROGRAF W8400 PRINTER WITH COLORTRAC SCANNER SYSTEM

Canon has teamed up with Colortrac to provide a powerful scan-to-copy/print/e-mail integrated system that combines Canon's fast, high-quality printer with Colortrac's speedy, color-accurate scanner.



imagePROGRAF W8400D with  
Colortrac Scanner System

This complete workflow solution provides for a fast and effective large-format capture-to-output system for a wide variety of users. Copying, archiving, or distributing maps, CAD drawings, posters, or documents is simple, quick, and easy. This system includes not only the hardware—imagePROGRAF printer, Colortrac color scanner, desktop workstation—but also software, such as CopySmart, SmartLF, and the HDI driver, to give any level of user a complete, out-of-the-box solution.



imagePROGRAF W6400  
(Also available with Colortrac Scanner System)

The scanner provides room for flexible document formats of up to 44" wide (40" image width) by unlimited length. It has scan speeds of up to 10.1 inches per second for monochrome and 3.36 inches per second for color, making this a powerful production tool for many environments. It's ideal for documents in the AEC, CAD, GIS, archive, reproduction, and office markets, such as maps (GIS); construction, engineering, and manufacturing drawings; site and facilities management plans (VAC/plumbing/utilities); court and property documents; design and layout proofs; posters; and office documents.

## THIS imagePROGRAF SYSTEM INCLUDES ALL COMPONENTS NECESSARY TO SAVE SCANNED IMAGES, DISTRIBUTE THEM ELECTRONICALLY, AND PRINT THEM QUICKLY AND ACCURATELY.

No matter what the application or skill level of the user, Canon includes the tools needed to create, process, and print large-format output.

### SCANNER

It's ready to go within seconds from power ON, with no warm-up or stabilization time required.

- 600-dpi optical/maximum resolution
- Maximum achievable scan speeds, at 200-dpi resolution, of up to 10.1 inches per second for monochrome and 3.36 inches per second for color
- Reliable, solid-state optical sensors for optimum support and positioning of the original image
- Auto-size detection techniques that work in-line as the image is scanned
- Documents are transported by precision rollers with the minimum force necessary to preserve delicate originals

### imagePROGRAF PRINTER\*

The imagePROGRAF Series of printers, with Canon's proprietary print-head technology, enables high-speed printing at 2400 x 1200 dpi, with precise 4pl ink droplets for high image resolution, clarity, and detail. A wide variety of media is available for applications, ranging from technical documents to photographs. This solution is available now with the imagePROGRAF W8400D, imagePROGRAF W8400, and imagePROGRAF W6400 models.

**A solution isn't just hardware...**

### SMARTLF SOFTWARE

This "ready-to-run" software is easy to use and designed for operation by a novice user. Select the File, Copy, or E-Mail function, the type of file to be scanned, and a few other intuitive settings. Then place the original in the scanner and off it goes!



SmartLF Screen

As the document is scanned, the image is displayed on the screen to provide reassurance that what you're getting is what you want.

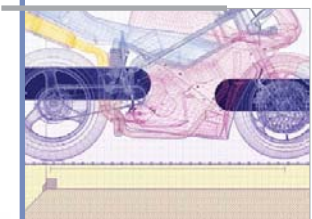
### COPYSMART SOFTWARE

This software creates a multifunction scan/copy/print system, maximizing investment and the utilization of the equipment. CopySmart has a graphical user interface that adopts a "big button" philosophy with which current Canon office equipment users will be familiar. Utilize the software's advanced feature set of CMYK color controls, brightening adjustment, text or bitmap insertion, crop, scale, zoom, and many others to edit documents.

### AND THERE'S MORE...

All Canon scan-to-print solutions include the creative software that comes with an imagePROGRAF printer. Create stunning prints right out of the box with software that's designed to put your ideas on paper. Or scan documents and import them into PosterArtist to create custom posters.

*\*Please check [www.usa.canon.com](http://www.usa.canon.com) for up-to-date model availability.*





# SPECIFICATIONS

## imagePROGRAF W8400D\*

**Print Head:** Bubble Jet On-Demand/  
FINE/End-User Replaceable (BC-1300)/  
6-Color Print Head

**Number of Nozzles:**  
1,280 per Color; 7,680 Total

**Droplet Size:** 4 Picoliter

**Nozzle Pitch (Head Resolution):**  
1200 dpi

**Print Resolution (Max.):**  
2400 x 1200 dpi

**Ink Tank:** Cyan, Magenta, Yellow,  
Black, Photo Cyan, Photo Magenta

**Ink Capacity:** 330ml

**Ink Type:** Dye

### Bundled Software:

- Printing Software
  - Printer Driver 2005, HDI Driver for AutoCAD®
- Applications
  - PosterArtist:™ Template-based Custom Poster-Creation Software
  - Digital Photo Print Pro:™ Image Editing and Layout Software for Large-Format Photo Printing
  - Software RIP
  - PhotoPRINT Select for imagePROGRAF (Adobe PostScript 3)

### Languages:

- Printer
  - GARO (Canon Proprietary)

- Via Software RIP
  - PostScript, PDF 1.4, EPS, TIFF, JPEG, BMP
- Operating System:**
  - Driver
    - Windows® 98/Me, Windows NT® 4.0 SP6/2000/XP/2003 Server, Macintosh® OS 8.6/9/X (10.2, 10.3, 10.4)
  - Software RIP
    - Windows 2000/XP, Macintosh OS X
- Borderless Printing Width (Roll Media Only):** 10", 14", 16", 24", 36", 42", 594mm (ISO A1), 840mm (ISO A0), 515mm (JIS B2), 1030mm (JIS B0)
- Nozzle Recovery System:** Non-Firing Nozzle Detection and Compensation

### Interface:

- Standard: USB 2.0 High Speed, 10/100Base-T/TX
- Optional: IEEE1394 FireWire Card (10/100Base-T/TX Card Must Be Uninstalled)

### Margins:

- Roll: All Sides: 0.20" (5mm)
- Cut Sheet: Leading and Left/Right Edges: 0.20" (5mm); Trailing Edge: 0.90" (23mm)

**Media Roll Diameter:** 5.9" (150mm)

**Power Supply:** Input Power: AC 100 – 240V (50 – 60Hz)

**Certifications:** UL®, FCC Class B, ENERGY STAR®

### Dimensions (With Stand):

64.6" x 38.2" x 42.3"  
(1642mm x 972mm x 1075mm)

**Weight (With Stand):** 216 lb. (98kg)

### User-Replaceable Items:

- Print Head (BC-1300)
- Maintenance Cartridge (MC-04)
- Cutter Blade (CT-02)

### Operational Environment:

- Temperature: 59 – 86° F (15 – 30° C)
- Humidity: RH 10 – 80% (No Condensation)

\* Windows 2000/XP Only

Print Speed			
	Mode	Resolution	Sq. Feet/Hour
Plain Paper	Draft	1200 x 1200	305
	Standard	1200 x 1200	117
Heavyweight Coated Paper	Draft	1200 x 1200	181
	Standard	1200 x 1200	117
Glossy Photo Paper	High	2400 x 1200	43
	Standard	1200 x 1200	90
Plain Paper (CAD)	High	2400 x 1200	51
	Standard	1200 x 1200	175
	High	1200 x 1200	92

Printed Image: ISO JIS-SCID No. 5 Chart (Bicycle Image)  
Printed Image Size: 43.6" x 54.5" (1107mm x 1384mm)  
Test Environment: Pentium® 4/3.2GHz, Windows XP SP2, 1024MB RAM, USB 2.0 High Speed, Adobe® Photoshop® 7.0  
Square Feet Per Hour does not include data transfer time and time for media cutting. The test conducted here is a result of Canon Inc. internal testing. The actual print speed varies, depending on number of factors including data size, data complexity, application software, and interface.

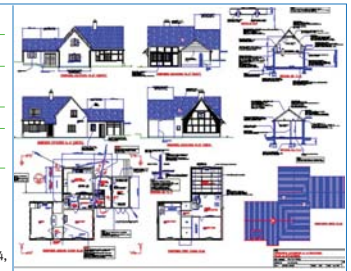
### Standard with the Printer

- Stand
- User Software CD (Printer Driver, HDI Driver, Utilities)
- Application CDs (PosterArtist, Digital Photo Print Pro)
- Software RIP CD (PhotoPRINT Select for imagePROGRAF)
- 6 Ink Tanks (C, M, Y, K, PC, PM)
- Basket
- 2" Core Media Spool
- Print Head
- Maintenance Cartridge
- Ethernet Card (Built In)
- USB 2.0 High-Speed Interface
- User Guide CD
- Setup Guide (Poster)
- Printer Reference Guide (Booklet)
- Hardware (For Setting Up the Stand)
- Power Cord
- Cutter Blade

### Print Speed (CAD Line Drawing)

	Rendering Resolution	Print Time
Plain Paper (CAD)	300 dpi	2 min. 15 sec.
	600 dpi	3 min. 55 sec.
Coated Paper (CAD)	300 dpi	3 min. 48 sec.
	600 dpi	3 min. 56 sec.
Tracing Paper (CAD)		
	300 dpi	2 min. 15 sec.
	600 dpi	3 min. 56 sec.

Printed Image: Cottage Plan and Elevation.dwg  
Printed Image Size: E-size 44.6" x 31.2" (1135mm x 795mm)  
Print Resolution: 1200 x 1200 dpi  
Test Environment: Pentium 4/2.2GHz, Windows 2000 SP4, 1048MB RAM, USB 2.0 High Speed, AutoCAD LT 2005  
Print time does not include data transfer time and time for media cutting. The test conducted here is a result of Canon Inc. internal testing. The actual print speed varies depending on number of factors such as data size, data complexity, application software, and interface.



## Colortrac Cx40e Scanner

### Scan Speeds:<sup>1</sup>

- Full Color @ 200 dpi: 3.36" (Per Second)
- Full Color @ 600 dpi: 1.68" (Per Second)
- Grayscale and Monochrome @ 200 dpi: 10.10" (Per Second)
- Grayscale/Monochrome @ 600 dpi: 5.04" (Per Second)

**Scan Modes:** 16.7-Million-Color RGB (24-Bit)  
256-Level Grayscale (8-Bit)  
Black and White (1-Bit)

**Color Space:** Normalized/Linearized Raw RGB

**Color Image Processing:** Gamma, Brightness, Black-and-White Point Adjustment

**Resolution:** 3600 dpi (Max.)/600 dpi (Optical)/  
Variable (100-3600 dpi, in 1-dpi Steps)

**Scan Accuracy:<sup>2</sup>** +/- 0.1%; +/- 1 pixel

**Maximum Image Width:** 40"

**Maximum Media Width:** 44"

**Maximum Media Length:** Not Limited by Scanner

**Maximum Media Thickness:** 0.08"

**Media Feed System:** Reliable, Front Loading and Straight Through Media Path for User-Friendly, Jam-Free Operation; Chemically Treated, Scratch-Resistant Scan Glass with Easy-Clean Access Via Hinged Grip-Roller Cover; Side Justified, One-Way Document Transport with Adjustable Pressure Plate (Paper Hold Down) Continuously Variable Over a Range 0.08 inches (0.2 cm) with 0.06 Inches (0.15 cm) Pre-Compression; Precision Power Rollers with 20 Offset, Dual Independently Suspended High-Grip Contour Rollers Transport Documents Gently and Accurately Through the

Scanner; Accurate, Zero-Maintenance Optical Media Sensors and Automatic Media Size Detection.

**Digital Imaging Technology:** Contact Image Sensor (CIS) Technology—Requires No Stitching or Maintenance Adjustment

- 5x Close-Spaced "Deep Focus" CIS (17,000 Pixels)
- Integral LED Illumination for Instant Scanning from Power ON and Practically Unlimited Life Span
- 36-Bit Digital Color Image Capture
- Panchromatic Black and White
- Factory-Set, Permanent Smart Color Calibration

### Digital Imaging Processing:

- 2D Intelligent Adaptive Thresholding (IAT) (1-Bit Mode)
- Fixed Threshold Black and White (1-Bit Mode)

### User Status and Control:

User Status and Control LCD Screen Displaying Scanner Status, Mode, and Settings. One-touch Push Button Operation for Scan-To-File, Scan-To-Copy, and Scan-To-E-Mail.

**User Maintenance:** Installable Plug-n-Play Scanner; Simple Cleaning

**Scanner Interface Kit:** 480 Mbits/Sec. USB 2 (On Scanner)/2m USB 2 Cable/Local Power Cable

### Operating Environment:

15 – 30° C, 15-80% RH, Non-Condensing  
90 – 250 VAC Autosensing, 47 – 63 Hz, 24 VA (Scanning), 15VA (Standby)

**Compliances:** CB, CE, FCC, UL

<sup>1</sup> The scan rate is proportional across the full range of resolutions supported by the scanner. Actual scan times will depend on the host system performance. Speeds quoted are for documents less than 24 inches width (60.96 cm); wider documents scan half this speed.  
<sup>2</sup> The quoted scan accuracy is valid for media up to 0.8mm thick and may vary depending on the operating environment and the type and thickness of media. SmartLF scanners are tested using a Mylar target at 20°C +/- 30°C, 60% +/- 10% RH with the media feed set to standard.

## System Components

### imagePROGRAF Printer

Colortrac SmartLF 4080E Scanner with power cord and USB 2.0 Cable (scanner to server)

- 2 Meter USB Cable (server to printer)
- Colortrac CopySmart Software
- Colortrac Universal Reprographic Stand
- Colortrac Universal Reprographic Stand Assembly Instructions
- Mini-Keyboard
- Mouse
- 17" Flat Panel Display
- 13:1 Media Card Reader
- DVD/CD-RW Drive
- MS Windows XP Professional Operating System
- Quick Start Guide
- Operator Manual on CD-ROM
- 1GB RAM

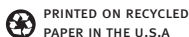
\* These are specifications for the imagePROGRAF W8400D printer. Please refer to [www.usa.canon.com](http://www.usa.canon.com) for specifications for other Canon imagePROGRAF printers.

As an ENERGY STAR® Partner, Canon U.S.A., Inc. has determined that the imagePROGRAF W8400D, imagePROGRAF W8400, and imagePROGRAF W6400 devices meet the ENERGY STAR guidelines for energy efficiency. ENERGY STAR and the ENERGY STAR mark are registered U.S. marks. AutoCAD is a registered trademark of Autodesk, Inc. in the United States. Windows and Windows NT are registered trademarks of Microsoft Corporation in the United States and/or other countries. Macintosh is a registered trademark of Apple Computer, Inc. Adobe, Photoshop, and PostScript are registered trademarks of Adobe Systems Incorporated in the United States and/or other countries. Pentium is a registered trademark of Intel Corporation. PANTONE is a registered trademark of Pantone, Inc. UL is a registered trademark of Underwriter's Laboratories, Inc. PhotoPRINT is a trademark of Scanvec Amiable, Inc. CANON and IMAGEPROGRAF are registered trademarks of Canon Inc. in the United States and may also be registered trademarks or trademarks in other countries. IMAGEANYWARE is a trademark of Canon. All referenced product names and other marks are trademarks of their respective owners.

Specifications subject to change without notice.

©2006 Canon U.S.A., Inc. All rights reserved.

0062W777  
0606-W8400SCAN-5M-MTM



PRINTED ON RECYCLED  
PAPER IN THE U.S.A.

**Canon**  
imageANYWARE

1-800-OK-CANON  
[www.usa.canon.com](http://www.usa.canon.com)

Canon U.S.A., Inc.  
One Canon Plaza  
Lake Success, NY 11042



## Free Manuals Download Website

<http://myh66.com>

<http://usermanuals.us>

<http://www.somanuals.com>

<http://www.4manuals.cc>

<http://www.manual-lib.com>

<http://www.404manual.com>

<http://www.luxmanual.com>

<http://aubethermostatmanual.com>

Golf course search by state

<http://golfingnear.com>

Email search by domain

<http://emailbydomain.com>

Auto manuals search

<http://auto.somanuals.com>

TV manuals search

<http://tv.somanuals.com>