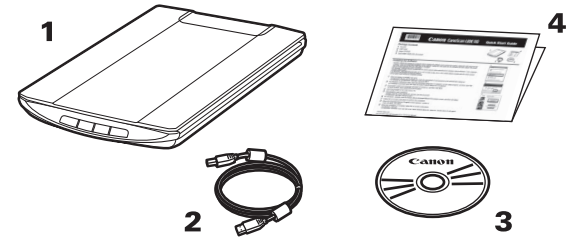




Package Contents

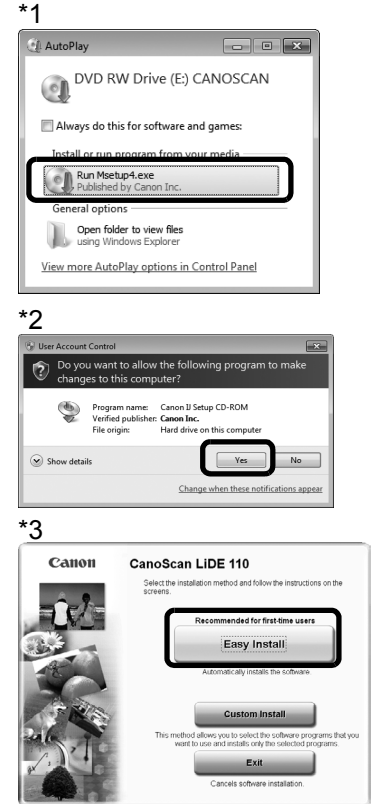
- 1 Scanner
- 2 USB Cable
- 3 Setup CD-ROM
- 4 Quick Start Guide (this document)



Installing the Software

- Do NOT connect the scanner to a computer before installing the software. If you connect the scanner, unplug the USB cable from the computer. When the **Found New Hardware** screen appears, unplug the USB cable from the computer and click **Cancel**. The screen may close automatically when the USB cable is unplugged.
- Quit all running applications before installation.
- For Windows: Uninstall software bundled with the Canon scanner before upgrading from Windows Vista to Windows 7, then, install the bundled software again.
- For Macintosh: After upgrading from Mac OS X v.10.5 or lower to Mac OS X v.10.6, install software bundled with the Canon scanner.
- Log in as an administrator to install the software.
- Do not switch users during the installation process.

- 1 Place the **Setup CD-ROM** in the drive.
For Macintosh: Double-click the **Setup** icon. Enter the administrator ID and password on the authentication dialog box.
For Windows XP and Macintosh, skip step 2 and go to step 3.
- 2 For Windows 7/Windows Vista, when the **AutoPlay** dialog box (*1) appears, run the setup program, and then click **Yes** or **Continue** to proceed when the **User Account Control** dialog box (*2) appears.
- 3 If prompted, select your language and place of residence, and then click **Next**.
In some countries, these dialog boxes will not appear.
- 4 Click **Easy Install** on the main menu (*3).
- 5 Click **Install** to start installation.
Carefully read the License Agreement, and then click **Yes** to proceed.
For Macintosh, skip step 6 and go to step 7.
- 6 For Windows, carefully read the **Please Allow All Install Wizard Processes** screen, and then click **Next**.
- 7 Follow the on-screen instructions to perform the installation.
- 8 For users in the U.S.A., when the **User Registration** screen appears, follow the on-screen instructions to ensure product support.
- 9 When the **Extended Survey Program** screen appears, confirm it.
If you can agree, click **Agree**.
- 10 When the installation is complete, follow the on-screen instructions.
For Windows: Click **Exit**.
For Macintosh: Click **Exit**. If you click **OK** on the **Canon Solution Menu EX** dialog box, Solution Menu EX will appear.



<Solution Menu EX>

You can select either MP Navigator EX, "On-Screen Manual", or the Online Registration.

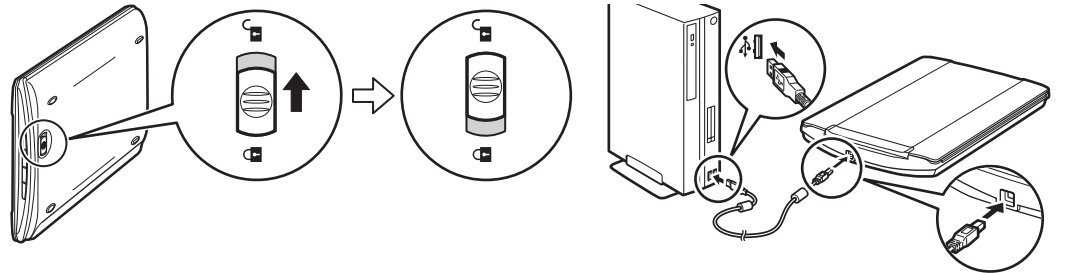
* The Online Registration is available for users in the U.S.A. only.

For Windows: When you start up your computer next time, Solution Menu EX will appear automatically. When you restart your computer, perform the operation of "Preparing the Scanner" in advance.
If only **Help & Settings** menu is displayed in Solution Menu EX, connect the scanner to your computer and wait a while, and then refer to the Solution Menu EX online help and set up the scanner.

For Macintosh: If the **Canon Solution Menu EX** icon is not found in the Dock, you can start Solution Menu EX from "About Solution Menu EX" in "On-Screen Manual". To add the **Canon Solution Menu EX** icon to the Dock, refer to the Solution Menu EX online help.

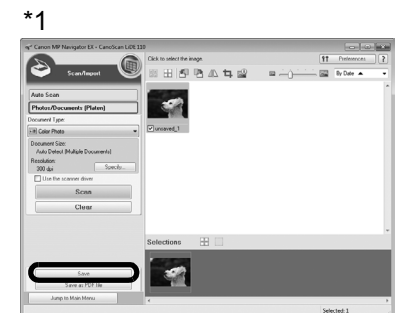
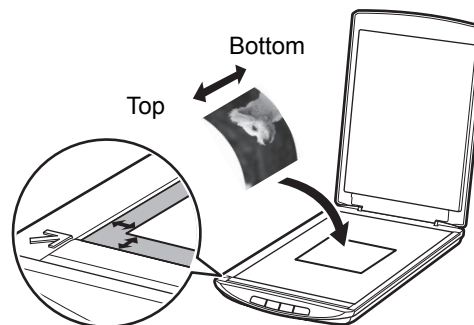
Preparing the Scanner

- 1 Slide the lock switch on the bottom of the scanner toward the unlock mark (🔓).
• Always lock the scanner when carrying or transporting it.
- 2 Connect the scanner to your computer with the supplied USB cable.
• Only use the USB cable provided with the scanner. Use of other cables may lead to a malfunction.
• Do not touch the metallic parts of the USB connector.
• The scanner does not have a power switch. The power is activated as soon as the computer is turned on.
• When the scanner is connected to the USB 1.1 port and **This device can perform faster or HI-SPEED USB Device Plugged into non-HI-SPEED USB Hub** message appears, ignore the message. The scanner operates in this condition without problems.




Try Scanning


- 1 Place a color photo document with the side to be scanned facing down on the platen glass at least 0.4 in. (1 cm) away from the edges of the platen glass, and then close the document cover.
- 2 Start MP Navigator EX.
For Windows: Double-click the **Canon Solution Menu EX** icon, and then click the **MP Navigator EX 4.0** icon under **Start Application** menu.
For Macintosh: Click the **Canon Solution Menu EX** icon in the Dock, and then click the **MP Navigator EX** icon under **Start Application** menu.
- 3 Click **Photos/Documents (Platen)**.
- 4 Select **Color Photo** in **Document Type**.
- 5 Click **Scan** to start scanning.
• Do not move the scanner while it is operating.
• Do not see the light source directly during a scan job.
- 6 When prompted that the scanning completed, click **Exit**.
- 7 Click **Save** to save the images and close MP Navigator EX (*1).




See the back page for the instructions for "Using the Scanner Buttons".

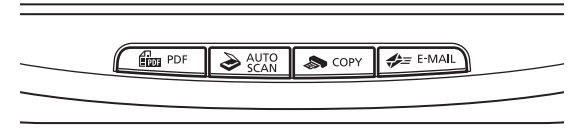
Using the Scanner Buttons

 **PDF Button**
Saves the scanned image as a PDF file.

 **AUTO SCAN Button**
Discriminates the document type automatically, then scans and saves it with appropriate settings.

 **COPY Button**
Prints (copies) the scanned image with a printer.

 **E-MAIL Button**
Attaches the scanned image to a new e-mail message.



- For Macintosh:
If you have not restarted the computer since installing the software, you need to restart the computer before using the scanner buttons first.

Refer to "**On-Screen Manual**" for further information about ScanGear, MP Navigator EX, Scanner Buttons, and Troubleshooting. To start "**On-Screen Manual**", double-click the on-screen manual icon on the desktop.

*In this guide, Windows 7 operating system Home Premium screenshots are used to illustrate explanations common to all operating systems.

Additionally, the every edition of Windows 7 is referred to as Windows 7, the every edition of Windows Vista operating system as Windows Vista, and Windows XP Home Edition/Professional as Windows XP.

Specifications

| | | CanoScan LiDE 110 |
|--|-------------|---|
| Scanner Type | | Flatbed |
| Sensor Type | | CIS (Color Contact Image Sensor) |
| Light Source | | 3-color (RGB) LED |
| Optical Resolution ^{*1} | | 2400 x 4800 dpi |
| Selectable Resolution | | 25-19200 dpi (ScanGear) |
| Scanning Bit Depth | Color | 48 bit input (16 bit input for each color (RGB)) 48 bit or 24 bit output (16 bit or 8 bit output for each color (RGB)) |
| | Grayscale | 16 bit input /8 bit output |
| Interface | | Hi-Speed USB ^{*2} |
| Maximum Document Size | | A4/Letter: 8.5" x 11.7" (216 x 297 mm) |
| Scanner Buttons | | 4 buttons (PDF, AUTO SCAN, COPY, E-MAIL) |
| Operating Range | Temperature | 5°C to 35°C (41°F to 95°F) |
| | Humidity | 10% to 90% RH (no condensation) |
| Power Requirements | | Supplied via USB port (No external adapter required) |
| Power Consumption | | In operation: 2.5 W maximum, Stand-by: 1.4 W ^{*3} , Suspend: 11 mW ^{*3} |
| Exterior Dimensions (W) x (D) x (H) | | 9.9 x 14.6 x 1.6 in. (250 x 370 x 40 mm) |
| Weight | | Approximately 1.6 kg (3.4 lbs.) |

^{*1} Optical Resolution represents the maximum sampling rate based on ISO 14473.

^{*2} The fastest speed in Hi-Speed USB mode on Windows PC. Transfer time is not included. Scanning speed varies according to the document types, scan settings, or specifications of the computer.

^{*3} USB connection to PC.

- Specifications are subject to change without notice.

FCC Notice (U.S.A. Only)

Model Number : K10352

This device complies with Part 15 of the FCC Rules. Operation is subject to the following two conditions: (1) This device may not cause harmful interference, and (2) this device must accept any interference received, including interference that may cause undesired operation.

Note: This equipment has been tested and found to comply with the limits for a Class B digital device, pursuant to Part 15 of the FCC Rules. These limits are designed to provide reasonable protection against harmful interference in a residential installation. This equipment generates, uses and can radiate radio frequency energy and, if not installed and used in accordance with the instructions, may cause harmful interference to radio communications. However, there is no guarantee that interference will not occur in a particular installation. If this equipment does cause harmful interference to radio or television reception, which can be determined by turning the equipment off and on, the user is encouraged to try to correct the interference by one or more of the following measures:

- Reorient or relocate the receiving antenna.
- Increase the separation between the equipment and receiver.
- Connect the equipment into an outlet on a circuit different from that to which the receiver is connected.
- Consult the dealer or an experienced radio/TV technician for help.

Use of a shielded cable is required to comply with Class B limits in Subpart B of Part 15 of the FCC Rules.

Do not make any changes or modifications to the equipment unless otherwise specified in the manual. If such changes or modifications should be made, you could be required to stop operation of the equipment.

Canon U.S.A., Inc.
One Canon Plaza
Lake Success, NY 11042
1-516-328-5600



As an ENERGY STAR® Partner, Canon Inc. has determined that this product meets the ENERGY STAR guidelines for energy efficiency.

Model Name: K10352 (CanoScan LiDE 110)

Warning

When you use this product, you should pay attention to the following legal issues:

- Scanning of certain documents, such as bank notes (bank bills), government bonds and public certificates, may be prohibited by law and may result in criminal and/or civil liability.
- You may be required under law to obtain authorization from a person possessing copyrights or other legal rights to the item being scanned.

If you are uncertain of the legality of scanning any particular item, you should consult your legal adviser in advance.

- Microsoft is a registered trademark of Microsoft Corporation.
- Windows is a trademark or registered trademark of Microsoft Corporation in the U.S. and/or other countries.
- Windows Vista is a trademark or registered trademark of Microsoft Corporation in the U.S. and/or other countries.
- Macintosh and Mac are trademarks of Apple Inc., registered in the U.S. and other countries.
- Adobe, Adobe RGB and Adobe RGB (1998) are either registered trademarks or trademarks of Adobe Systems Incorporated in the United States and/or other countries.
- Other names and products not mentioned above may be registered trademarks or trademarks of their respective companies.

CANON U.S.A. INC.
One Canon Plaza, Lake Success, NY 11042 U.S.A.

CANON AUSTRALIA PTY LTD
1 Thomas Holt Drive, North Ryde, Sydney N.S.W. 2113, Australia

CANON NEW ZEALAND LIMITED
Akoranga Business Park, Akoranga Drive, Northcote, Auckland, New Zealand

Free Manuals Download Website

<http://myh66.com>

<http://usermanuals.us>

<http://www.somanuals.com>

<http://www.4manuals.cc>

<http://www.manual-lib.com>

<http://www.404manual.com>

<http://www.luxmanual.com>

<http://aubethermostatmanual.com>

Golf course search by state

<http://golfingnear.com>

Email search by domain

<http://emailbydomain.com>

Auto manuals search

<http://auto.somanuals.com>

TV manuals search

<http://tv.somanuals.com>