

**Canon**

**CanoScan FB330P/FB630P  
Color Scanner**

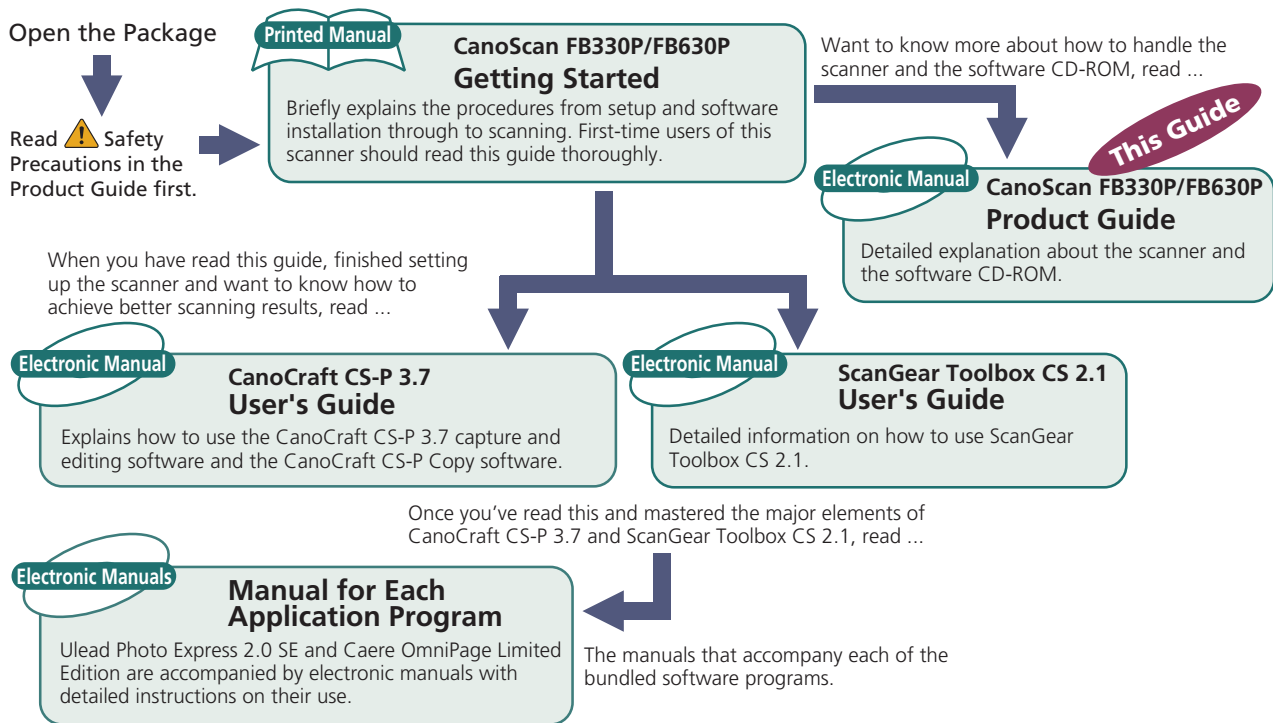
# Product Guide



Download from [www.Somanuals.com](http://www.Somanuals.com) All Manuals Download.com download.



# How to Make Best Use of the Manuals



# How to Use the Product Guide

---

This guide provides an in-depth explanation of individual topics related to CanoScan FB330P and FB630P color scanners and the accompanying software CD-ROM.

If you haven't already read the Getting Started guide, we recommend that you follow its suggestions first before consulting this guide.

## Organization of this Guide

This guide tackles the scanner and software topics that could not be accommodated in the Getting Started guide. Each topic is intended to be read as a discrete unit. You need only read the topics that apply. The guide is divided into four sections.

### Chapter 1 Placement and Connections

How to position the scanner and connect it to your computer and printer.

### Chapter 2 The Software CD-ROM

How to use the software CD-ROM and an introduction to the software and electronic manuals.

### Chapter 3 How to Use the Scanner

How to position documents for scanning and how to run the software.

### Appendices

Troubleshooting tip, care, and maintenance.

\*References to Windows in this guide refer to Windows®95, Windows®98 and Windows NT®4.0.



## Conventions Used in this Guide

**WARNING** This symbol indicates precautions that must be taken when operating the equipment. Ensure that you read all warnings.

**NOTE** This symbol indicates supplementary operating procedures and other useful information. Read these notes at your own discretion.

Use of shielded cable is necessary to comply with the technical requirements of EMC Directive.

# Table of Contents

Features of CanoScan FB330P/FB630P Color Scanners .....	8
⚠ Safety Precautions .....	10
Setup and Use .....	14
Components Guide .....	17
<b>Chapter 1 Placement and Connections .....</b>	<b>19</b>
The Scanning Unit Lock .....	20
Unlocking the Scanning Unit .....	20
Locking the Scanning Unit .....	20
Connecting to a Computer .....	22
Connecting the Scanner to a Computer .....	22
Connecting a Printer to the Scanner .....	24
Connecting the Power Cord (Turning on the Power) .....	26
<b>Chapter 2 The Software CD-ROM .....</b>	<b>27</b>
How to Use the Software CD-ROM .....	28
Running the CD-ROM Menu Program .....	28
If the CD-ROM Menu Fails to Appear .....	29
About the Menu Window .....	30
Installing the Software .....	32
Software Titles .....	32
Installing the Software .....	33
Viewing Electronic Manuals .....	36
What is an Electronic Manual? .....	36



List of Electronic Manuals .....	36
Software for Viewing Electronic Manuals .....	37
Viewing Electronic Manuals .....	38
How to Operate Electronic Manuals .....	39
Displaying the CD-ROM Contents .....	46
Troubleshooting .....	49
Exiting the CD-ROM Menu Program .....	50
<b>Chapter 3 How to Use the Scanner .....</b>	<b>51</b>
Positioning Documents .....	52
About CanoCraft CS-P .....	54
CanoCraft CS-P as a Stand-Alone Application .....	54
CanoCraft CS-P as a TWAIN Driver .....	56
<b>Appendices .....</b>	<b>60</b>
Troubleshooting .....	61
Problems with Software Installation .....	61
Problems Starting Software Programs .....	62
Problems with Scanning .....	65
Problems with Printing .....	69
Other Questions .....	70
Precautions with Printers.....	71
The Scanner and the Printer Cannot Be Operated at the Same Time .....	71
Using Windows Printing System (WPS) Printers .....	71
What to Do if a Printer is Not Operating Correctly .....	71

Care and Maintenance .....	75
Major Specifications.....	77
Index .....	79
Customer Support Help Desk .....	81

## Trademarks

- Adobe® and Acrobat® are trademarks of Adobe Systems Incorporated.
- IBM, IBM PC/AT Series are trademarks of International Business Machines Corp., USA.
- Windows is a registered trademark of Microsoft Corporation in the United States and/or other countries.
- All other brand names and product names used in this manual are trademarks or registered trademarks of their respective holders.

## Caution

1. No part of this document may be reproduced or transmitted in any form or by any means, electronic or mechanical, for any purpose, without the express written permission of Canon Inc.
2. The equipment and software described in this guide are subject to change without notice.
3. Notwithstanding the considerable care taken in preparing this guide, please note that Canon Inc. does not accept liability for any results arising from the operation of the equipment or software mentioned herein.
4. Please note that scanning copyrighted materials, including documents and images, without permission from the copyright holder is prohibited by law, except for personal or household use.
5. Portions of this guide are reproduced herein with the permission of Adobe Systems Incorporated.



# Features of CanoScan FB330P/FB630P Color Scanners

You have purchased one of the world's finest flatbed Color scanners. The 300-dot-per-inch (dpi) optical resolution CanoScan FB330P and 600-dpi optical resolution CanoScan FB630P incorporate the following special features.

## **Compact Footprint**

World's smallest and slimmest A4/Letter size scanner (256 mm wide x 372.5 mm long x 39 mm high). Weighing only 1.5 kilograms (3.3 pounds), this scanner is so light that it can easily be placed or moved to suit your convenience.

## **Simple Connection to a Parallel Port**

Easily connected to your computer's parallel (printer) port with a single cable (supplied). Your existing printer connects to the scanner's second parallel port, creating a daisy chain configuration. See Precautions with Printers, p. 71 of this guide.

## **Standby Power and Energy-Saving Features**

Convenient standby power feature means that the scanner is always ready to use. On continuous standby operation, it consumes a mere 5 watts per hour and only 9 watts per hour in full operation. Moreover, it is designed for high-speed, quiet operation.



## Fine Color Tones and High Resolution



Scanning method employs proprietary Canon LIDE scanning technology in an ultrahigh-sensitivity CIS (contact image sensor). Reading 12 bits (4,096 colors) per red, green and blue (RGB) channel, the scanner offers 8-bit output that reproduces brilliant tones at high resolution.

### WARNING


- *It is illegal to reproduce currency, bills, negotiable securities and other documents prohibited by law. Reproduction of such items may be subject to criminal action.*
- *It is illegal to reproduce legal certificates, licenses, travel tickets, and certain public and private documents prohibited from reproduction by law. Reproduction of such items may be subject to criminal action.*
- *Please noted that intellectual property protected by copyright may not be reproduced without the express permission of the copyright holder except for personal or household use under limited circumstances.*

## Safety Precautions

Please read and take the following precautions before using the equipment.

-  **WARNING** Indicates a warning concerning operations that may lead to death or injury to persons if not performed correctly. In order to use the equipment safely, always pay attention to these warnings.
-  **CAUTION** Indicates a caution concerning operations that may lead to injury to persons or damage to property if not performed correctly. In order to use the equipment safely, always pay attention to these cautions.

## About Locations

-  **WARNING**
  - Do not place equipment near flammable liquids such as alcohol or thinners. If the internal electrical parts come in contact with flammable liquids, fire or electric shocks may result.
  - Do not place the following objects on top of the equipment. If the internal electrical parts come in contact with these objects, fire or electric shocks may result.
    - metallic objects, such as necklaces
    - containers with liquid, such as cups, vases and flower pots

If any of these objects or liquids enter the equipment, immediately unplug the AC adapter and contact your retailer or Canon Customer Support Help Desk.

## CAUTION

- Do not place the equipment in the following areas. Fires or electric shocks may result.
  - Areas with high humidity
  - Areas subject to direct sunlight
  - Areas with high temperatures
  - Areas near flame sources
- Do not place on shaky stands, unstable surfaces or surfaces subject to frequent vibrations. If the equipment falls, it may cause injuries.
- Do not place heavy objects on the equipment. Objects may fall and cause injuries.

## About the Power Supply

### WARNING

- Do not damage, mutilate or modify the power cord or AC adapter. Do not place heavy objects on, pull or excessively bend the power cord. Damaged wires may cause fire or electric shocks.
- Do not plug/unplug the AC adapter with wet hands. You may be electrocuted.
- Do not connect excessive numbers of plugs into one electrical outlet. It could cause fires or electric shocks.
- Do not twist or tie electrical cords together. It could cause fires or electric shocks.
- Always plug power cords or AC adapters in all the way. If not plugged in completely, they may cause fires or electric shocks.
- As a rule, do not use electrical extension cords. They could cause fire or electric shocks. If the use of an extension cord is necessary, do not use one longer than 15 ft. (5 m). Make sure that the extension cord is not twisted, the connection between the

power cord and the extension cord is secure and the AC adapter is fully plugged in. Do not use multiple extension cords.

- Do not use extension cords in high traffic areas where they can be stepped on or tripped over, which may damage the cords. Damaged wires could cause fires or electric shocks.

### CAUTION

- Do not use wrong voltage outlet. It could cause fires or electric shocks.
- When unplugging the AC adapter, always pull on the main body of the adapter. Do not pull the AC adapter out by the cord, which may damage the wires and lead to fire or electric shock.
- Do not place objects around the AC adapter in case it needs to be unplugged during emergencies.

## General Handling Precautions

### WARNING

- Do not take apart or modify the equipment. There are high voltage parts within that could cause fire or electric shocks if exposed.
- If you hear unusual noises, see smoke, feel excessive heat or smell anything unusual, immediately unplug the AC adapter and contact your retailer or Canon Customer Support Help Desk. Continued use may result in fires or electric shocks.
- Do not use flammable sprays near this equipment. Also do not spill water, liquids, or flammable liquids on the equipment. If these fluids enter this equipment and contact the electrical parts, fires or electric shock may result. If anything enters the equipment, immediately unplug the AC adapter and contact your retailer or Canon Customer Support Help Desk.

- When cleaning the equipment, always unplug the AC adapter. Otherwise you could cause a fire or receive an electric shock.
- When cleaning the equipment, use a water-moistened cloth that is well wrung out. Do not use flammable liquids such as alcohol, benzene or thinners. If a flammable liquid enters the inner electrical parts, it may cause fires or electric shocks.

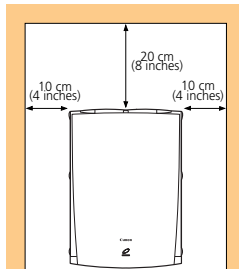
### CAUTION

- Carefully close the document cover in order not to pinch your hands.
- Do not press heavily on the document cover. The document glass may break and injure you.
- When not in use for extended periods, such as long weekends, unplug the equipment for safety.
- When transporting the equipment, be extremely careful. Dropping it could cause an injury.
- Wait until the equipment has cooled before placing a cover over it. Otherwise it may cause a fire.
- Do not use the supplied CD-ROM in regular CD players. It produces excessively loud sound that may cause hearing damage.
- Unplug the AC Adapter from the outlet at least once a year, and clean the area around the base of the AC Adapter's metal pins to ensure all dust is removed. If dust accumulates in this area, it may result in a fire.

# Setup and Use

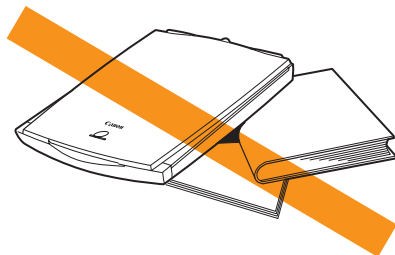
In order to use this scanner safely, please observe the following warnings at all times.

- Please use in an area where the following temperature and humidity conditions can be met.  
Surrounding temperature: 5 degrees - 35 degrees C (41 degrees - 95 degrees F)  
Surrounding humidity: 10% - 90% RH (without condensations)
- Please use where the electrical conditions (normal home outlets) can be met in your country.
- Make certain there is plenty of clear space around the scanner.  
(Below is a diagram looking straight down on the scanner).

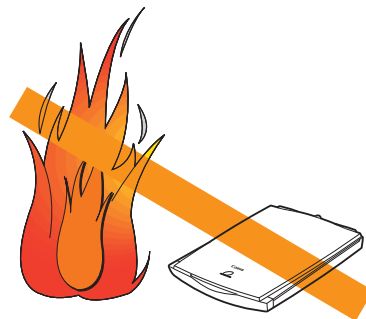


- Set up the scanner so that the cable reaches from the scanner to the electrical outlet.
- Do not set up in areas where there is an excessive fluctuation in temperature or humidity. Also do not move the equipment from high humidity areas to low humidity areas. Condensation may cause image errors. After moving from high humidity areas to low humidity areas, leave the scanner enough time to gradually adapt to the new conditions before use.
- Do not use the scanner in areas subject to direct sunlight. The humidity may rise inside the equipment and cause damage or decreased image quality. If you have to use the scanner in direct sunlight, make sure to use a thick curtain to block the light.
- Locations to Avoid:

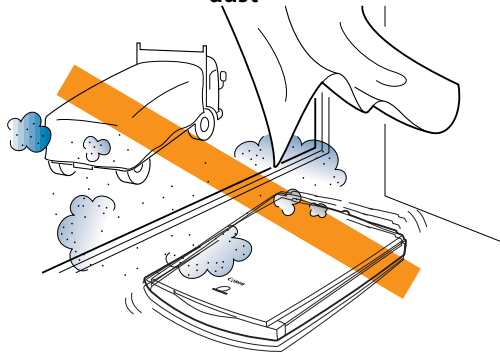
#### Uneven or stepped surfaces



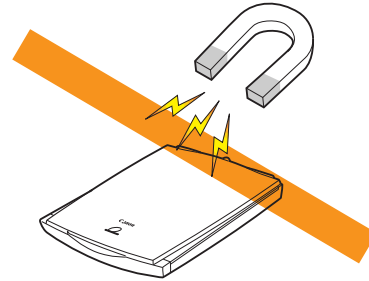
#### High-temperature environments



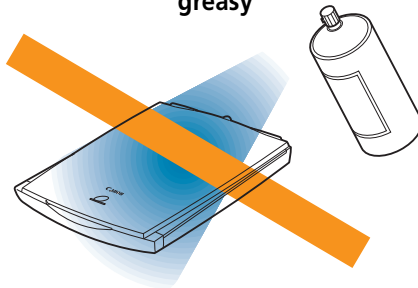
**Environments subject to shocks,  
smoke, noxious fumes, water vapor or  
dust**



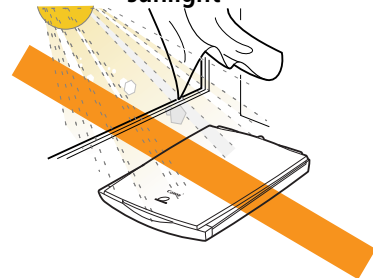
**Locations near TVs or devices generat-  
ing strong magnetic fields**



**Environments in which the air is salty or  
greasy**

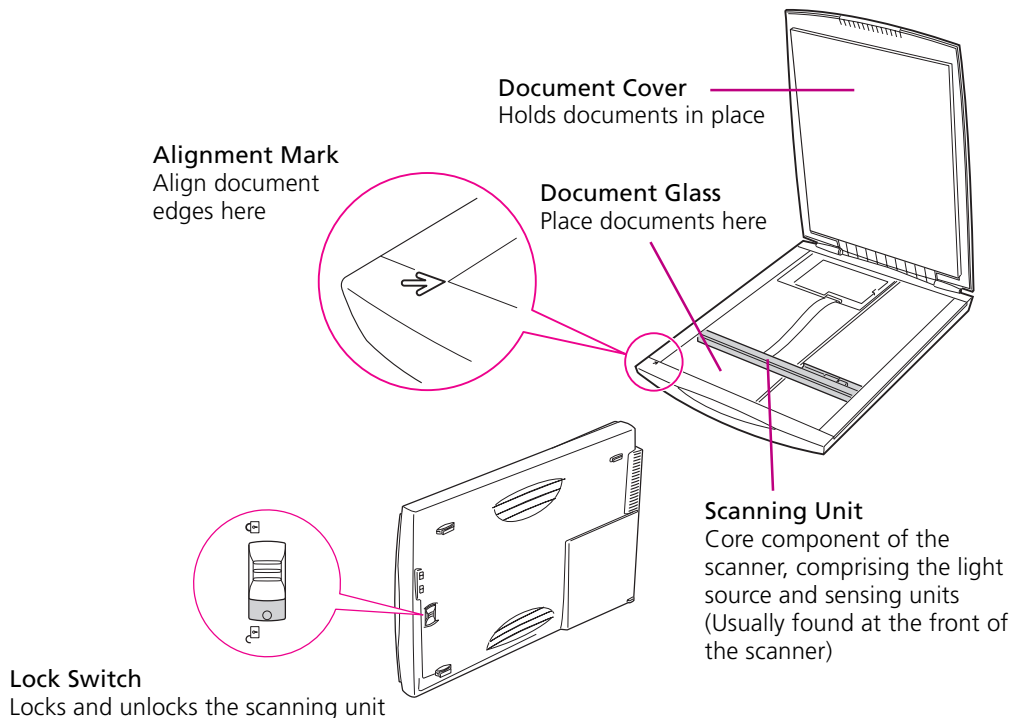


**Locations subject to strong direct  
sunlight**



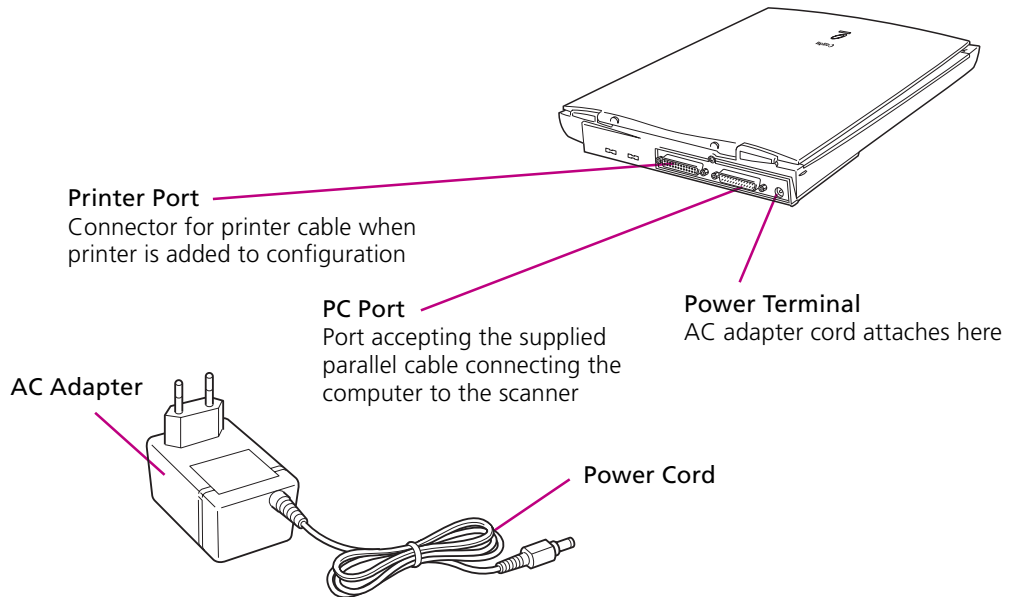


# Components Guide



**WARNING**

- Do not tilt the scanner more than 90° when checking or operating the lock.
- Always unlock the scanner before plugging in the AC adapter. Operating the scanner in the locked state may damage the equipment.
- Lock the scanning unit before transporting it in a vehicle (p. 20).



# Chapter 1


## Placement and Connections

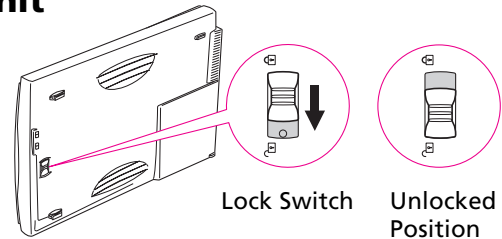
The Scanning Unit Lock .....	20
Connecting to a Computer .....	22
Connecting the Power Cord (Turning on the Power) .....	26

# The Scanning Unit Lock

The scanner is shipped with the scanning unit locked to prevent damage during transport. You must unlock it to use the scanner.

## Unlocking the Scanning Unit

1. Find the lock switch on the underside of the scanner.
2. Push the lock switch toward the unlocked mark (  ).



### WARNING

- *Always unlock the scanner before plugging in the AC adapter. Operating the scanner in the locked position may damage the equipment.*

## Locking the Scanning Unit

Always engage the lock before transporting the scanner.

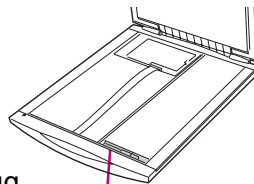
1. **Turn off all connected devices, including the scanner, computer, printer or other device.**

Follow the recommended procedures to shut down and turn off the computer, printer or other device in that order.

Unplug the scanner's AC adapter from the electrical outlet.

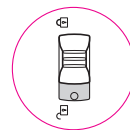
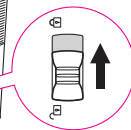
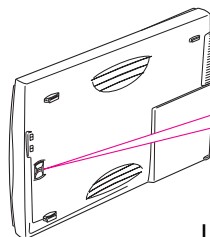
## 2. Confirm that the scanning unit is at the front of the scanner.

First check to make sure that all documents have been removed from the document glass. Then close the document cover, and after you have plugged the power cord plug into the scanner, plug the AC Adapter into the electrical outlet. Check to see that the scanning unit has correctly returned to the front of the scanner, then unplug the AC adapter from the electrical outlet. Lastly, unplug the power cord plug from the scanner.



Scanning Unit  
Confirm that the scanning unit is in this position

## 3. Lock the scanning unit by pushing the lock switch toward the lock mark ( ).



Lock Switch

Locked Position

### WARNING

- *Carrying or transporting the scanner without locking the scanning unit may damage it. Be particularly careful to lock the scanning unit when transporting the scanner in a vehicle.*

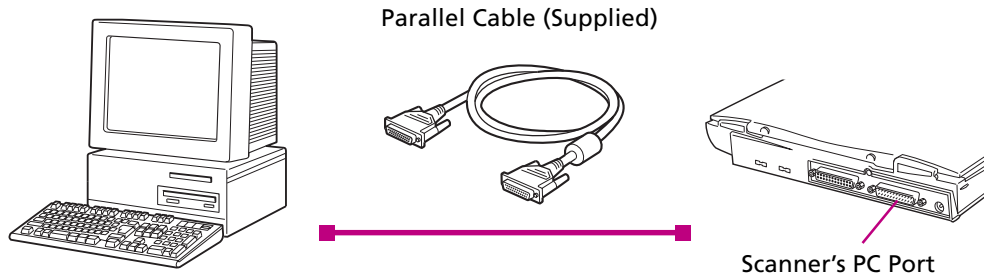
# Connecting to a Computer

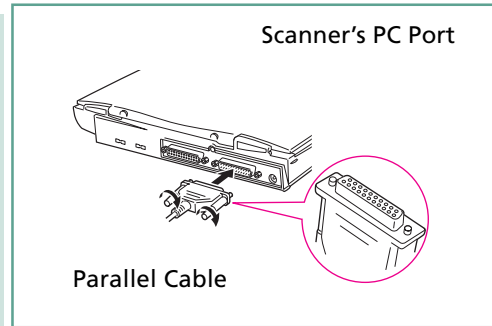
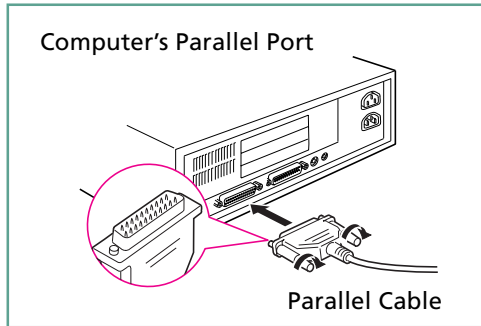
Once you have determined the ideal placement, connect the scanner to the computer as shown below.

- WARNING** • *Ensure that the computer's power is off before attempting these procedures. In addition, ensure that the scanner's AC adapter is unplugged.*

## Connecting the Scanner to a Computer

The connectors at either end of the parallel cable are different. Check to ensure you insert the correct one.



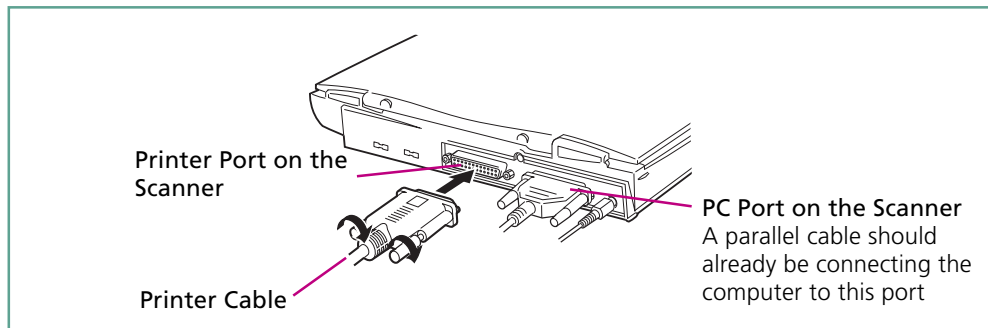
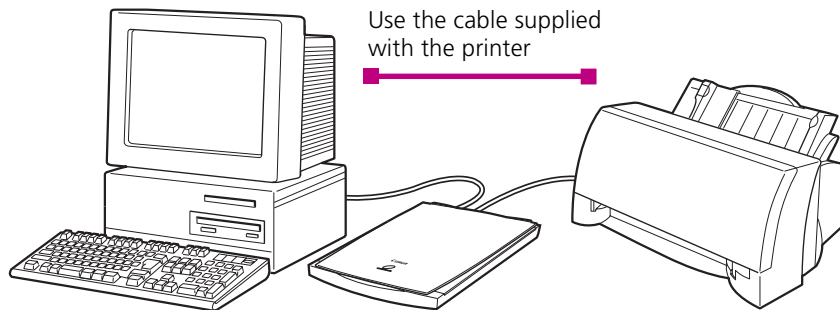


**NOTE**

- *The parallel port will have a connector that is approximately 4 cm (1.5 inches) long and labeled Parallel or Printer. It is generally found on the back panel of the computer.*
- *If a printer is already connected to the computer, detach the printer cable from the parallel port.*

## Connecting a Printer to the Scanner

To add a printer to the configuration, connect the printer to the printer port on the scanner.





**WARNING**

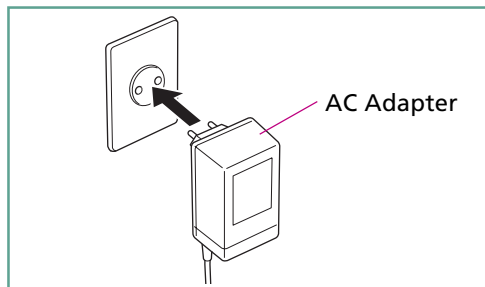
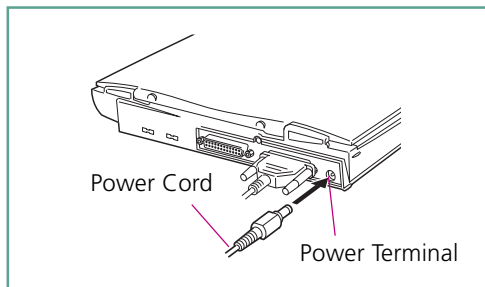
- *Windows Printing System printers cannot be used in the configuration above.*
- *For correct operation, some Epson inkjet models require further adjustments to software settings after the preceding steps. Refer to the notice titled *What to Do if a Printer is Not Operating Correctly* (p. 71).*
- *Since data is sent through the scanner to the printer, ensure that the scanner power is on before attempting to print even when not using the scanner.*
- *Devices other than printers cannot be attached to the scanner's printer port.*



# Connecting the Power Cord (Turning on the Power)

The scanner is powered by the AC adapter supplied in the package.

1. Connect the power cord plug to the power terminal on the scanner.
2. Plug the AC adapter into an electrical outlet.



## **WARNING**

- *Do not use an AC adapter other than the one supplied with the scanner. Other adapters may damage the equipment.*
- *There is no power switch on this scanner. The power is activated as soon as the AC adapter is plugged into a power source. The unit can be left on standby with the AC adapter plugged in under normal operating conditions.*
- *To power down the scanner, first turn off the computer and other peripheral devices before unplugging the scanner's AC adapter from the electrical outlet.*

## Chapter 2

# The Software CD-ROM

How to Use the Software CD-ROM .....	28
Installing the Software .....	32
Viewing Electronic Manuals .....	36
Displaying the CD-ROM Contents .....	46
Troubleshooting .....	49

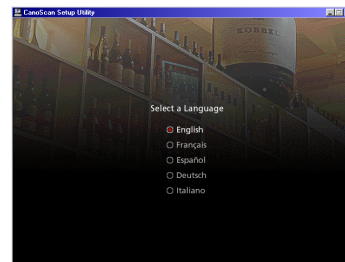
# How to Use the Software CD-ROM

The CD-ROM included in the scanner package contains software and electronic manuals that will maximize your use of the scanner. This section explains how to use the CD-ROM.

## Running the CD-ROM Menu Program

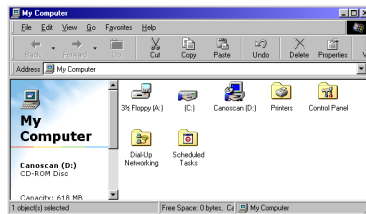
The CD-ROM menu program will automatically display when you place the disk in the CD-ROM drive.

1. Language select window will display.  
Select your language.
2. The menu window is shown below.



## If the CD-ROM Menu Fails to Appear

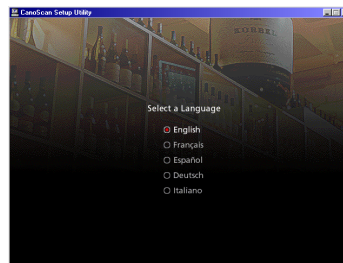
1. Click the [My Computer] icon on the Windows desktop.



2. Double-click the CD-ROM icon titled [Canoscan (D:)] that appears in the My Computer window.

Although an "(D:)" appears after the CD-ROM title in this example, indicating the name of the drive, it may be labeled with a different letter on your system. This letter may be ignored for the purposes of this procedure.

3. Language select window will display. Select your language.



#### 4. CanoScan Setup Utility window will display.



### About the Menu Window

The following items can be selected from the menu window.

#### Install/Uninstall Software

Installs the software onto your computer's hard drive that is required for scanning. Can also be used to uninstall the software.

#### View the Electronic Manuals

Presents electronic manuals for the software contained on the disk.

#### Display the CD-ROM Contents

Displays the list of folders and files contained on the disk.

## **Troubleshooting**

Presents troubleshooting tips when scanning isn't proceeding as expected or when you encounter a problem operating the scanner.

## **Exit**

Closes the CD-ROM menu program.

Each of these items is described on the following pages.

# Installing the Software

---

There are four software programs contained on the CD-ROM. Install them with the procedures described on the following page.

## Software Titles

### **CanoCraft CS-P 3.7 (Approximately 9 MB)**

A specialized program required for scanning images with CanoScan FB330P/FB630P scanners. Ensure that you install this program. (CanoCraft CS-P 3.7 is hereafter referred to as CanoCraft CS-P.)

### **CanoCraft CS-P Copy**

Installed automatically with CanoCraft CS-P. A program that allows your computer, scanner and printer easily make a color copy.

### **ScanGear Toolbox CS 2.1 (Approximately 2 MB)**

A program that can scan and load images directly into application programs, copy images and perform other semi-automated tasks. (ScanGear Toolbox CS 2.1 is hereafter referred to as ScanGear Toolbox.)

### **Ulead Photo Express 2.0 SE (Approximately 105 MB)**

A graphics program that works with CanoCraft CS-P to scan and load images, which can then be edited or retouched. The scanning functions are only available if CanoCraft CS-P is installed.



### **Caere OmniPage Limited Edition (Approximately 18 MB)**

An optical character recognition (OCR) program that works with CanoCraft CS-P to scan and load documents, which can then be converted into text data for editing. The scanning functions are only available if CanoCraft CS-P is installed.

### **Adobe Acrobat Reader (Approximately 10 MB)**

The reader program for the on-screen software manuals contained on the CD-ROM.

#### **WARNING**

- *Installation of the above programs requires approximately 144 megabytes on your hard disk.*
- *Please refer to the Troubleshooting section of this guide if you experience difficulty in installing the software (p. 61).*

#### **NOTE**

- *Software descriptions are contained in the Guide to the Software section of the Getting Started guide, starting on page 23.*

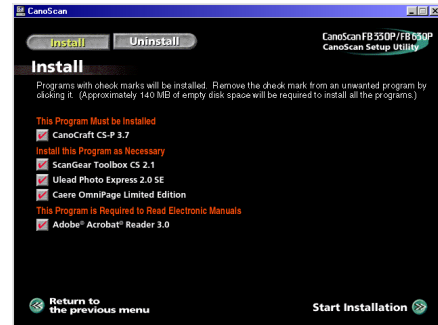
## **Installing the Software**

#### **WARNING**

- *Do not remove the CD-ROM from its drive or power the scanner down during installation of the software unless prompted by an on-screen message of CanoScan Setup Utility.*

1. Confirm that the scanner is properly connected and powered up.  
**Place the CD-ROM in the computer drive.**  
Select your language from the language select window.
2. Click the [Install/Uninstall Software] button from the CD-ROM menu that automatically appears.  
The following dialog will display.

Install/Uninstall Software



3. Click the [Start Installation] button on the bottom right of the window.

#### **4. Follow the instructions in the window to proceed with installation.**

We recommend installing all the programs under normal circumstances. Experienced computer users may wish to selectively install the programs. However, the CanoCraft CS-P must be installed to operate the scanner. Once installation of all the software is complete, follow the on-screen instructions of CanoScan Setup Utility to restart your computer.

#### **5. Remove the CD-ROM.**

# Viewing Electronic Manuals

---

You can view electronic manuals contained on the software CD-ROM.

## What is an Electronic Manual?

On-screen manuals are provided in a digital format for viewing on your computer monitor. They offer a variety of features not possible with printed manuals, such as the ability to jump to different topics with a single mouse click on a hyperlink or item in the table of contents or index. The manuals also support keyword search functions. You can, of course, also print them out on your printer.

## List of Electronic Manuals

The CD-ROM contains five electronic manuals.

### Product Guide (this guide)

#### CanoCraft CS-P 3.7

Refer to this manual for detailed instructions on how to use the CanoCraft CS-P and CanoCraft CS-P Copy programs.

#### ScanGear Toolbox CS 2.1

Refer to this manual for detailed instructions on how to use ScanGear Toolbox CS.

### **Ulead Photo Express 2.0 SE**

Refer to this manual for detailed instructions on how to use the Ulead Photo Express 2.0 SE graphics program.

### **Caere OmniPage Limited Edition**

Refer to this manual for detailed instructions on how to use the Caere OmniPage Limited Edition optical character recognition program.

## **Software for Viewing Electronic Manuals**

Adobe Acrobat Reader program is supplied for viewing the manuals. The Adobe Acrobat Reader should already have been installed on your computer in order to read the electronic manuals. In case it is not installed, [see page 33](#) for installation instructions.

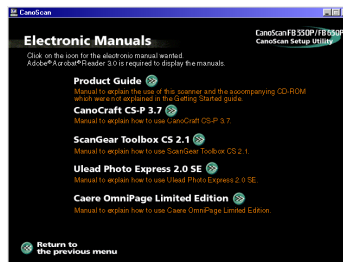
#### **NOTE**


- *Descriptions of CanoCraft CS-P, CanoCraft CS-P Copy, Ulead Photo Express 2.0 SE and Caere OmniPage Limited Edition are included in the Getting Started guide, pages 23-30.*

## Viewing Electronic Manuals

1. Click [View the Electronic Manuals] in the CD-ROM menu.  
The following window will display.

View the Electronic Manuals



2. Select the manual you wish to view.  
Adobe Acrobat Reader will automatically display the selected manual.
3. Click [Return to the previous menu] when you have finished viewing.  
Click the  of the Adobe Acrobat Reader Window.  
The main menu will display.

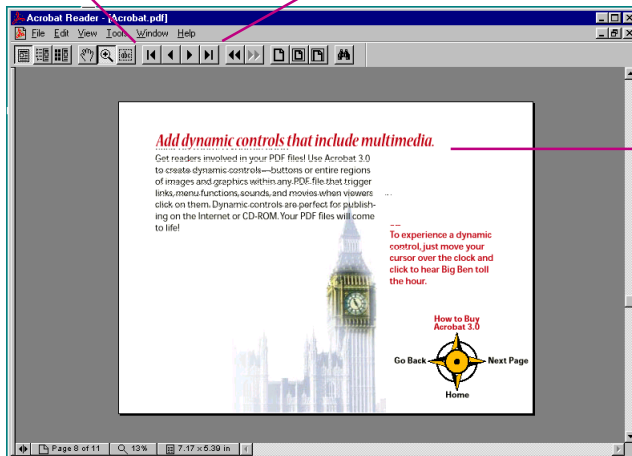
# How to Operate Electronic Manuals

This section briefly explains how to use the major functions of Adobe Acrobat Reader to view the electronic manuals.

## Changing Pages

Page ahead or back with the buttons below.

Previous Next

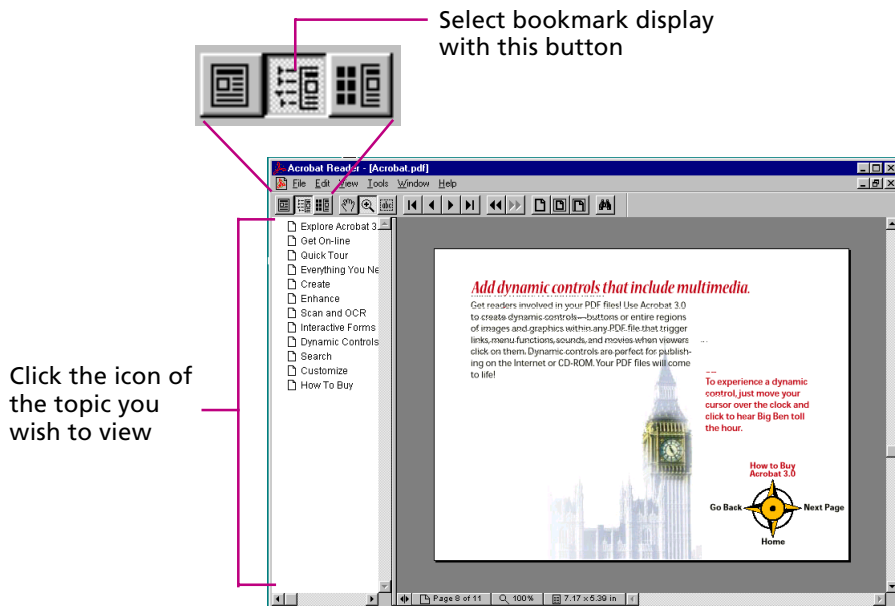


Manual Contents



## Bookmark Display

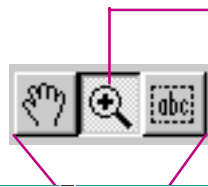
The bookmark display shows an overview area in which each topic and subtopic is bookmarked. Click on a bookmark to jump directly to that topic.





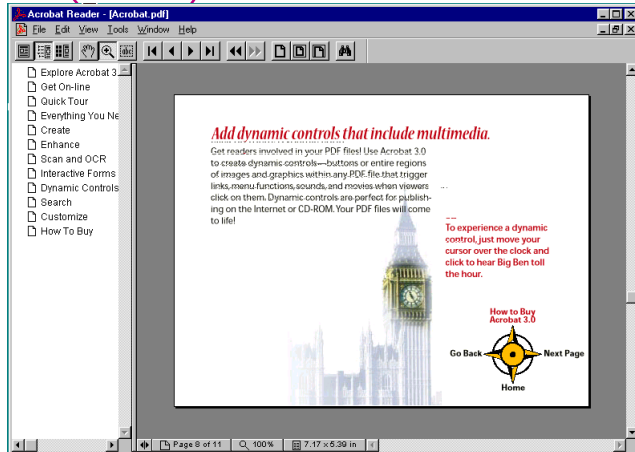
## Zoom In/Out

Zoom in or out on part of a page.



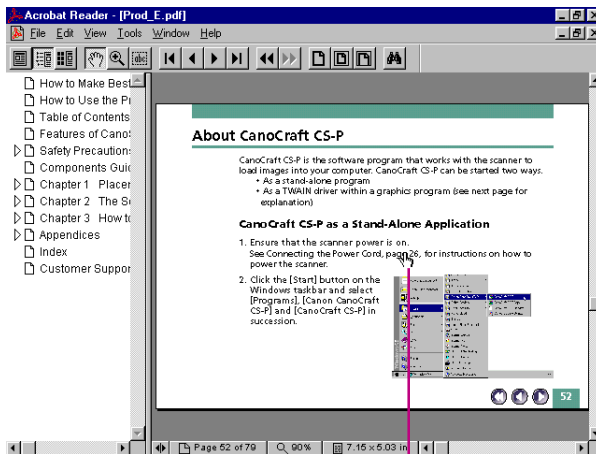
Click this icon to select the zoom tool, then click on the area you wish to magnify

Hold the [Ctrl] and click the zoom tool on the page to zoom out



## Click a Page Reference to Jump to a Topic

Clicking on a page reference (hyperlink) takes you directly to that topic.



Clicking on a page reference takes you directly to that topic

Clicking on an item in the table of contents or index also takes you directly to that topic.

The image displays two screenshots of the Adobe Acrobat Reader interface. The top screenshot shows the 'Table of Contents' page, with a pink arrow pointing to the 'Chapter 1 Placement and Connections' entry. The bottom screenshot shows the 'Index' page, with a pink arrow pointing to the 'CD-ROM Menu Program' entry. Both arrows originate from a text box on the right side of the image.

Table of Contents

Features of CanoScan FB320P/FB520P COLOUR Scanners .....	6
Safety Precautions .....	10
Safe Locations .....	10
About the Power Supply .....	12
General Handling Precautions .....	13
Component Guide .....	15
<b>Chapter 1 Placement and Connections .....</b>	<b>17</b>
The Scanning Unit Lock .....	17
Unlocking the Scanning Unit .....	18
Locking the Scanning Unit .....	18
Scanner Placement .....	20
Locations to Avoid .....	20
Connecting to a Computer .....	22

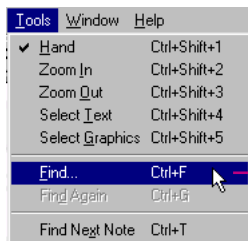
Index

<b>A</b>	<b>D</b>
AC Adapter 12, 16, 26	Display CD-ROM Contents 46
Adobe Acrobat Reader 33, 28, 45	Document Cover 15, 50, 72, 79
Alignment Mark 15, 50	Document Glass 15, 50, 72, 79
<b>B</b>	Document Size 51, 74
Bookmark Display 40	<b>E</b>
<b>C</b>	Electromagnetic Interference 11
CanoScan CSF as a Stand-Alone Application 32	Electronics Manual 20, 26
CanoScan CSF as a TWAIN Driver 54	Epson Inkjet 22
CanoScan CSF Copy 32	Exiting the CD-ROM Menu Program 21
Care and Maintenance 72	<b>F</b>
CD-ROM 28	Firewall Precautions 12
CD-ROM Menu Program 32	<b>I</b>
Changing Paper 28	Intel(R) Processor Software 20, 22, 32
Cleaning 72	Intel(R) Universal Software Button 24
Components Guide 15	Installing the Software 22, 32
Connecting a Printer 24	Insufficient Free Hard Disk Space 59
Connecting to a Computer 22	Insufficient Memory 59
Connection 22, 24, 26	Intellectual Property 9
Connector 16, 22, 23	iPhoto Express 1.1 22, 54, 62
Copyright 7	<b>L</b>
	Legal Restrictions 9
	List of Electronic Manuals 26
	Locations to Avoid 20
	Lock-Switch 15, 18

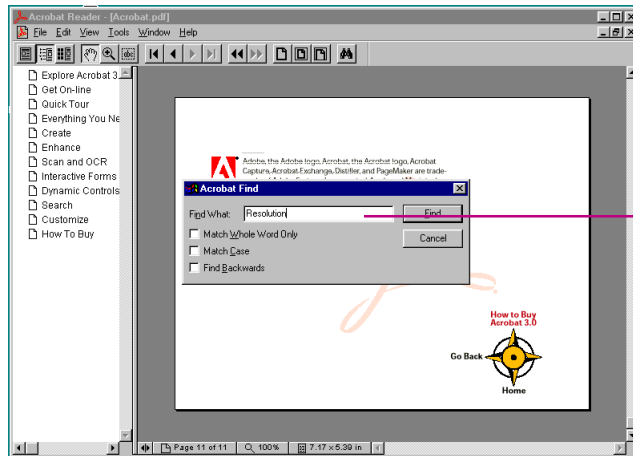
Clicking on a table of contents or index item takes you directly to that topic

## Jump to a Topic with a Keyword Search

Entering a keyword into the Find dialog takes you to the associated topic.



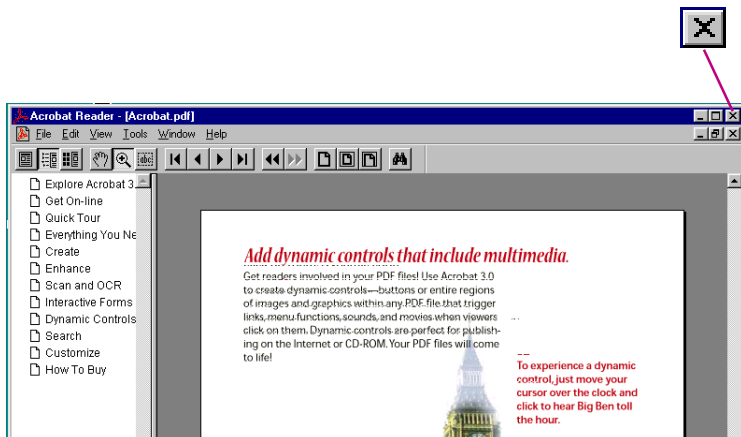
Click the [Tools] menu and select [Find] to initiate a search



Enter a keyword and click the [Find] button

## Exit Adobe Acrobat Reader

Click the close box to exit Adobe Acrobat Reader



### NOTE

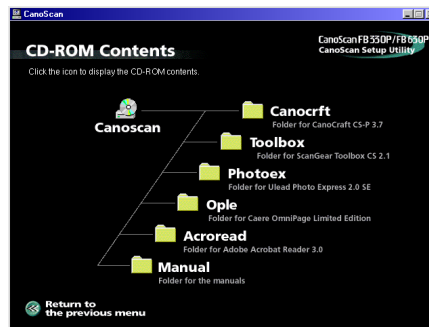
- *Some manuals may not contain bookmark references, or may not jump to the selected topic when a page reference or item in the table of contents and index is clicked.*
- *For more information on Adobe Acrobat Reader, please refer to the [Reader Online Guide] in its [Help] menu.*


# Displaying the CD-ROM Contents

You can view a list of the folders and files contained on the CD-ROM.

1. Click [Display the CD-ROM Contents] in the CD-ROM menu.  
The following window will display.

Display the CD-ROM Contents



2. Click the icon of a folder to view its contents.  
The contents of selected folder will display.  
To close the window, click its close box  on the upper right.
3. When you have finished viewing folder contents, click [Return to the previous menu].  
The main menu will display.

The major files on the CD-ROM are shown below for experienced and expert users. The folders and files are arranged hierarchically from left to right. "F" denotes a folder.

Readme	Lists the latest information on the CD-ROM contents
Setup	Starts the CanoScan Setup Utility
Bin (F)	Contains a file required for the CanoScan Setup Utility
Acroread (F) — English (F) — Ar32e301	Installs Adobe Acrobat Reader
Ople (F) — Disk1 (F) — Setup	Installs Caere OmniPage Limited Edition
Photoex (F) — Setup	Installs Ulead Photo Express 2.0 SE
Manual (F) — English (F)	
Product	Product Guide electronic manual
Canocrft	CanoCraft CS-P electronic manual
Ople	Caere OmniPage Limited Edition electronic manual
Pe2	Ulead Photo Express 2.0 SE electronic manual
Toolbox	ScanGear Toolbox CS electronic manual





# Troubleshooting

The troubleshooting facility is intended to assist you when you think there is a malfunction or you are having problems performing a task.

**1. Click [Troubleshooting] in the CD-ROM menu.**

The following window will display.

Troubleshooting



**2. Follow the instructions on the screen to proceed through the troubleshooting section.**

**3. Click [Return to the previous menu] when you have finished viewing.**

The main menu will display.

## Exiting the CD-ROM Menu Program

1. Return to the menu window.



2. Click the [Exit] button.

The menu window will close.

3. Remove the CD-ROM from the drive.

Handle the disk with care and store it in a safe place.

# Chapter 3

## How to Use the Scanner

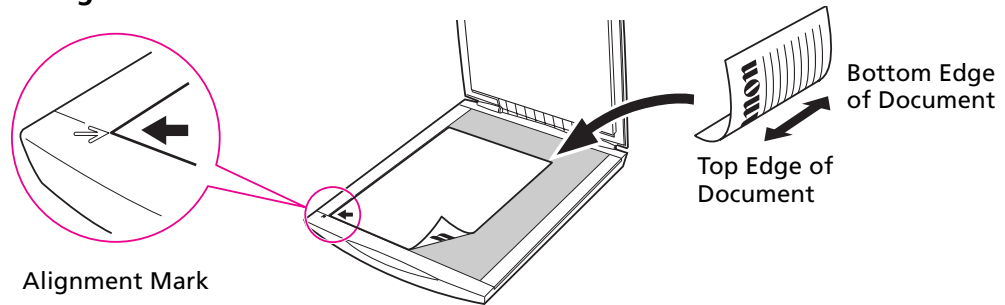
Positioning Documents .....	52
About CanoCraft CS-P .....	54



# Positioning Documents

Position documents for scanning on the document glass, using the alignment mark as a guide.

1. Lift the document cover.
2. Place the document face down on the document glass with its top edge at the front of the scanner (the edge farthest away from the document cover hinge). Align the edges of the document with the alignment mark.



3. Close the document cover, being careful not to move the document from alignment.

**WARNING**

- *The maximum allowable size for scanning is 216 x 297 mm (8.5 x 11.69 inches), up to A4 size or letter size.*
- *This scanner is equipped with an ultra-sensitive scanning unit. Opening the document cover during scanning or improperly closing it may not produce proper results. When the document cover cannot be closed because you are scanning thick documents, such as books, cover the document glass with a dark cloth to prevent ambient light from affecting the scan.*



# About CanoCraft CS-P

CanoCraft CS-P is the software program that works with the scanner to load images into your computer. CanoCraft CS-P can be started two ways.

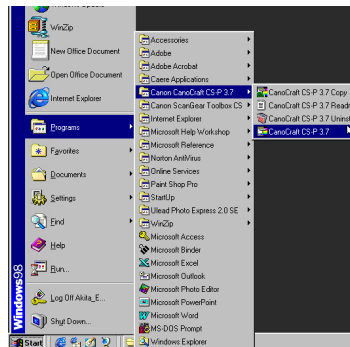
- As a stand-alone program
- As a TWAIN driver within a graphics program (see page 56 for explanation)

## CanoCraft CS-P as a Stand-Alone Application

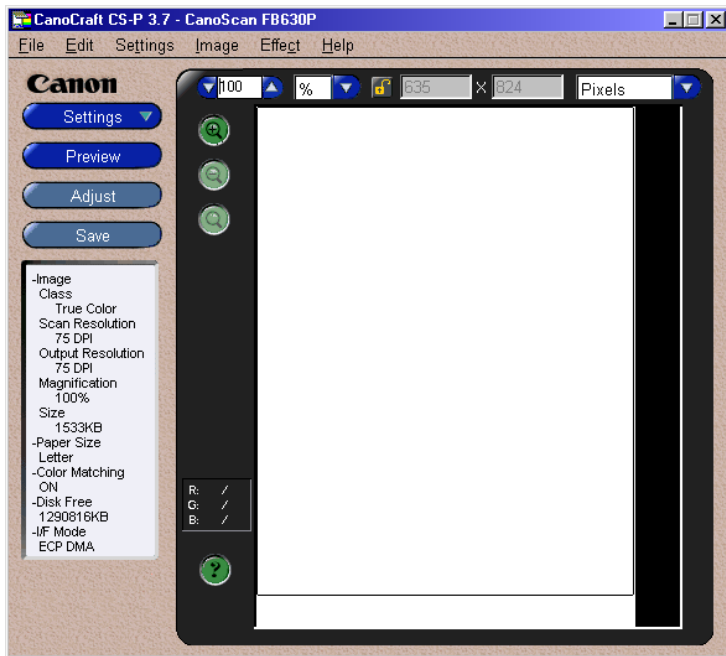
### 1. Ensure that the scanner is plugged.

See Connecting the Power Cord, [page 26](#), for instructions on how to power the scanner.

### 2. Click the [Start] button on the Windows taskbar and select [Programs], [Canon CanoCraft CS-P 3.7] and [CanoCraft CS-P 3.7] in succession.



CanoCraft CS-P will start and display the following window. Use this window to preview and scan images. For instructions for these procedures, please see the electronic manual entitled CanoCraft CS-P User's Guide.



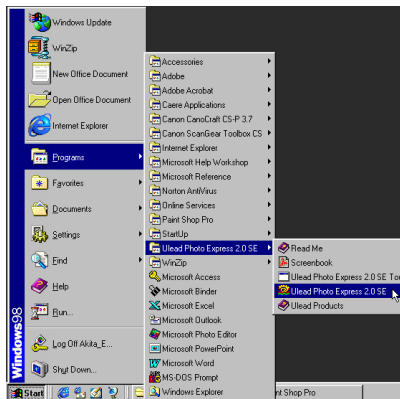
## CanoCraft CS-P as a TWAIN Driver

CanoCraft CS-P can be used as a TWAIN driver within a graphics program. TWAIN is the acronym for a set of scanning standards. CanoCraft CS-P can be started from within application programs that are TWAIN\_32-compliant to load images directly into the host program. For example, you can start Ulead Photo Express 2.0 SE and use its buttons to open a TWAIN driver for the scanner. A CanoCraft CS-P window will display.

### 1. Ensure that the scanner is plugged.

See Connecting the Power Cord, [page 26](#), for instructions on how to power the scanner.

### 2. Click the [Start] button on the Windows taskbar and select [Programs], [Ulead Photo Express 2.0 SE] and [Ulead Photo Express 2.0 SE] in succession.





Ulead Photo Express 2.0 SE will start and its window will display.



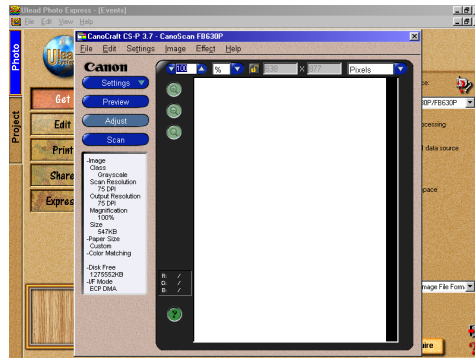
3. Click the [File] menu and select [Acquire] and [Scanner] in succession.



4. Confirm that [CanoScan FB330P/FB630P] is selected in the [Select data source:] list box and click the [Acquire] button.



The CanoCraft CS-P window will appear in the Ulead Photo Express 2.0 SE window. Use this window to scan a document.



## NOTE

- *If your system is set up for a digital camera or another scanner in addition to this scanner, the name of that scanner may appear in the [Select data source:] list box. In that case, click the arrow button on the list box and select [CanoScan FB330P/IFB630P].*
- *There is only one difference between the CanoCraft CS-P window when it is used as a stand-alone application and when it is used as a TWAIN driver: As a TWAIN driver, the save button becomes the scan button.*
- *When the scans are finished, the CanoCraft CS-P window can be closed and the scanned images will be displayed in the Ulead Photo Express 2.0 SE window for editing or retouching. For further instructions on the use of Ulead Photo Express 2.0 SE, please consult its electronic manual.*
- *Methods for starting CanoCraft CS-P from within other application programs may differ from those described above. Refer to the respective manuals for instructions for other programs.*

# Appendices

Troubleshooting .....	61
Precautions with Printers.....	71
Care and Maintenance .....	75
Major Specifications .....	77

# Troubleshooting

---

Please read the suggestions below when scanning isn't proceeding as expected or when you encounter a problem operating the scanner. If the remedies suggested below do not solve your problem or your problem isn't listed below, consult your Canon vendor or the nearest Canon Customer Support Help Desk (p. 81-82).

## NOTE

- *When you contact a Customer Support Help Desk, our technicians will need to know about the computer connected to the scanner. Please take time now to copy and fill in the System Information page 33 of the Getting Started guide. Keep this information in a safe place for future reference.*
- *For assistance with problems related to the installation and operation of the software, please also refer to the Readme and Help files accompanying each program. These files contain important information that may not be found in the manuals.*

## Problems with Software Installation

### ***Installation is unsuccessful***

Cause 1: Insufficient memory to run the installer program

Solution: Close other software programs that are running and reinstall

---

Cause 2: Insufficient free hard disk space

Solution: Delete or transfer unnecessary files from the hard disk and reinstall. Refer to **page 33** for the required free hard disk space

---



### ***Nothing displays when the CD-ROM is placed in the drive***

Cause : CD-ROM will not automatically run the menu program

Solution: Start the menu program manually ([See p. 29](#))

---

### ***Installation just doesn't seem to be working***

Solution: Manually install the software by clicking the [Start] button, selecting [Run] and typing one of the command lines below into the box. If your CD-ROM drive is labeled other than [D:], substitute the appropriate letter, such as [E:] or [F:], in the lines below

To install CanoCraft CS-P: [D:\CANOCRFT\ENGLISH\DISK1\SETUP.EXE]

To install ScanGear Toolbox CS: [D:\TOOLBOX\ENGLISH\DISK1\SETUP.EXE]

To install Ulead Photo Express 2.0 SE: [D:\PHOTOEX\SETUP.EXE]

To install Caere OmniPage Limited Edition: [D:\OPLE\DISK1\SETUP.EXE]

To install Adobe Acrobat Reader:

[D:\ACROREAD\ENGLISH\AR32E301.EXE]

To read the electronic manuals on the CD-ROM, navigate to the [D:\MANUAL] folder and open the PDF files in the respective subfolders

---

## **Problems Starting Software Programs**

***[No Scanners detected. Please check if CanoScan FB330P/FB630P is connected properly.] message displays***

Cause 1: Scanner not detected because the AC adapter is not correctly plugged into the electrical outlet

Solution: Plug the AC adapter securely into the electrical outlet ([See p. 26](#))

---



Cause 2: Scanner not detected because the power cord plug is not correctly connected to the scanner

Solution: Reconnect the power cord to the scanner (See p. 26)

---

Cause 3: Scanner not detected because a parallel cable is not securely fastened to the scanner or computer

Solution: Securely fasten the parallel cables (See p. 23)

---

Cause 4: DMA transmission through parallel port failed

Solution: Change the parallel port settings (See Getting Started)

---

#### ***CanoCraft CS-P will not start***

Cause 1: Insufficient memory (RAM) available to run CanoCraft CS-P

Solution: Close other programs and run CanoCraft CS-P

---

Cause 2: CanoCraft CS-P Copy running

Solution: CanoCraft CS-P cannot run at the same time as CanoCraft CS-P Copy. Close CanoCraft CS-P Copy (See CanoCraft CS-P User's Guide)

---

Cause 3: CanoCraft CS-P already running within another application as a TWAIN driver

Solution: Close the version of CanoCraft CS-P running within the other application and restart (See CanoCraft CS-P User's Guide)

---

#### ***CanoCraft CS-P Copy will not start***

Cause: CanoCraft CS-P running

Solution: Close CanoCraft CS-P

---

### ***Problems starting CanoCraft CS-P as a TWAIN driver from within another application***

Cause 1: Insufficient memory (RAM) available to start CanoCraft CS-P

Solution: Close other programs and start CanoCraft CS-P

---

Cause 2: CanoCraft CS-P already running as a stand-alone program

Solution: Close the version of CanoCraft CS-P that is already running

---

Cause 3: CanoCraft CS-P not installed

Solution: Install CanoCraft CS-P (See p. 33)

---

Cause 4: Application program is not TWAIN\_32 compatible

Solution: Start CanoCraft CS-P from within a TWAIN\_32-compatible program

---

Cause 5: Printing in progress

Solution: CanoCraft CS-P cannot be started as a TWAIN driver while printing is in progress. Start CanoCraft CS-P after printing finishes

---



## Problems with Scanning

### ***Scanner will not scan***

Cause 1: Scanner not powered up

Solution: Securely connect the AC adapter to the scanner and electrical outlet ([See p. 26](#))

---

Cause 2: Scanning unit locked

Solution: Unlock scanning unit by setting lock switch to unlocked position ([See p. 20](#))

---

Cause 3: Software incorrectly installed

Solution: Reinstall software ([See p. 33](#))

---

Cause 4: CanoCraft CS-P not installed. Only Ulead Photo Express 2.0 SE and/or Caere OmniPage Limited Edition installed

Solution: CanoCraft CS-P is required for scanning. Install it ([See p. 33](#))

---

Cause 5: Printing in progress

Solution: Scanner cannot be used while printing. Initiate scan after printing finishes

---

***[Low disk space condition, the file may have been truncated.]***

- Cause: Scanned image cannot be saved because of insufficient disk space  
Solution: Rescan after removing or transferring unnecessary files to another disk or specify another disk as the save location
- 

***Scanning unit fails to return to ready position (front of scanner)***

- Cause: AC adapter out of contact with electrical outlet or scanner while scanning unit in motion  
Solution: Clear all documents and objects from the document glass, close the document cover, unplug the AC adapter from the electrical outlet and then plug it back in
- 

***Scan quality is poor***

- Cause 1: Document cover is open  
Solution: Close the document cover
- 
- Cause 2: Original document floating on document glass  
Solution: Gently press down on the document cover to prevent the document from floating
- 
- Cause 3: Improperly closed or floating document cover  
Solution: Hold document cover down with hand during scan
- 
- Cause 4: Dirty document glass or document cover  
Solution: Clean document glass and document cover (See p. 75)
-

Cause 5: Incorrect scan settings  
Solution: Rescan with adjusted settings (See the CanoCraft CS-P User's Guide electronic manual)

---

Cause 6: A power cord is too close to the scanner.  
Solution: Move all power cords away from the top of the scanner and surrounding area

---

### ***Glossy color photo will not scan clearly***

Cause: Optical interference created by the photo adhering to document glass produces striped patterns

Solution 1: Gently press down on the document cover

---

Solution 2: Move the photo on the document glass to break the adhesion

---

Solution 3: Clean the document glass (See p. 75)

---

### ***Stripes appear on scan of publication***

Cause: Moiré effect from scan of publication at low resolution (print screen lines highlighted by optical interference, producing striped patterns). The appearance of this effect is dependent upon particular combinations of screen line densities and scanning resolutions

Solution: Rescan at different resolutions or turn on the Descreen mode (See the CanoCraft CS-P User's Guide electronic manual)

---

### ***Whitened edges on image scanned from thick book***

Cause: Scanner employs an ultra-sensitive scanning unit. Scanning unit will sense even the smallest amount of light entering around the edges of the book if the document cover cannot be completely closed

Solution: Cover the book and document glass with a dark cloth to prevent ambient light from affecting the scan

---

### ***Slow scanning speed***

Cause 1: Improper parallel port setting

Solution: Adjust parallel port setting (See Getting Started)

---

Cause 2: Computer can only interface with the scanner with the parallel port setting set to the slowest mode (Nibble mode)

Solution: Faster speed not obtainable with current computer

---

Cause 3: Epson Printer Window in use for Epson printer

Solution: Close Epson Printer Window (See p. 73)

---

## Problems with Printing

### *Printing fails or printing errors*

Cause 1: Scanner and printer incorrectly connected or cable loose

Solution: Connect cable correctly (See p. 24)

---

Cause 2: Scanner not powered up

Solution: Since data is sent through the scanner to the printer, the scanner power must be on to print. Connect the AC adapter to the scanner and electrical outlet (See p. 26)

---

Cause 3: WPS (Windows Printing System) printer in use

Solution: WPS printers cannot be used when connected through the scanner. To use both the printer and the scanner, alternately connect the devices to the computer's parallel port as required

---

Cause 4: Scanning in progress

Solution: Printer cannot be used while scanning. Initiate print after scanning finishes

---

## Other Questions

***Is this scanner compatible with SCSI controllers?***

Answer: No. This scanner can only interface through a parallel port connection

---

***Can a Film Adapter Unit be used with this scanner?***

Answer: No

---

***Can an Automatic Document Feeder be used with this scanner?***

Answer: No

---

***Can other peripheral devices employing a parallel port connection be connected to the scanner?***

Answer: The only peripheral devices that can be connected to this scanner are printers employing parallel port connections

---

***Can a external parallel switch be used with the scanner?***

Answer: No

---

***Scanner cannot connect to a computer***

Cause: Scanner connected to incompatible computer

Solution: Scanner is PC/AT compatible and not compatible with other standards, such as Macintosh. Connect to a PC/AT compatible computer

---

# Precautions with Printers

---

The following precautions should be observed when using a printer in conjunction with the scanner.

## **The Scanner and the Printer Cannot Be Operated at the Same Time**

The scanner and printer both use the same parallel port, making it impossible to scan during printing or print during scanning. Attempting to initiate a scan while printing will cause the [Printer Port is used by another device.] message to display. Under certain conditions, initiation of a scan command may succeed during a print job, but the printing operation may cease and result in a printer error.

## **Using Windows Printing System (WPS) Printers**

Windows Printing System compatible printers, such as Canon BJC-610W, BJC-620W, LBP-460 and LBP-660 models, will not operate properly when connected via the scanner. To use such printers, directly connect the printer to the computer's parallel port and alternate with the scanner as required.

## **What to Do if a Printer is Not Operating Correctly**

The scanner uses the standard Windows parallel port driver for scanning and printing operations. As a result, connecting printers that employ their

own parallel port drivers, such as Epson inkjet printers, to the scanner's printer port will cause the scanner or printer to malfunction. Such printers must be handled as follows:

**NOTE**

- *Contact the manufacturer to find out whether or not your printer uses the standard Windows parallel port driver.*

- **Using Canon Printers**

Use the following printer settings when connecting a LIPS4 printer to the scanner's printer port.

### How to Adjust the Settings

1. Click the Windows [Start] menu and select [Settings] and [Printers].
2. Click the icon of the printer to select it. Click the [File] menu in the window and select [Properties].
3. In the printer's properties dialog, select the [Details] tab and click the [Spool Settings] button.
4. Click the "Start printing after last page is spooled" option to make it active and click the [OK] button.
5. Click the [OK] button in the properties dialog.

- **Using Epson Printers**

It is advisable to adjust the Spool Manager settings as follows to avoid mis-operation of the scanner during printing. (This procedure is not necessary on computers running Windows NT 4.0.)



## How to Adjust the Spool Manager Settings

1. Click the [Start] button on the Windows taskbar and select [Programs], [Epson] and [Spool Manager].
2. Double click the icon of the printer currently in use.
3. Click to place a checkmark beside the [Use Print Manager for this port] option in the settings dialog.

### NOTE

- *Selecting the [Use Print Manager for this port] setting causes the computer to spool all of the print data onto the hard drive before sending it to the printer, resulting in a printing speed that is moderately slower than if this setting is not selected.*

Use of the Epson Printer Window software that accompanies Epson printers may cause the scanner's scan speed to drop dramatically, failure of the scanner to be recognized by the computer and incorrect operation of CanoCraft CS-P.

If you experience problems, please try to solve them by following the procedures below to disable the Epson Printer Window.

## How to Disable the Epson Printer Window

1. Click the [Start] button on the Windows taskbar and select [Programs] and [Windows Explorer].
2. Use Windows Explorer to navigate to the [Windows], [Start Menu], [Programs], and [StartUp] folders and delete the [Epson Printer Window] icon.

**NOTE**

- *Deleting the Epson Printer Window software will disable the capacity to confirm ink levels and read error messages for the printer.*

- **How to Solve Problems with Other Printers That Are Operating Incorrectly**

Begin by turning off the printer's bi-directional functions (in its status monitor or control panel). Please refer to the instructions that accompanied your printer for an explanation of this operation. If this does not solve the problem, connect the printer directly to the computer's parallel port and alternate with the scanner as required.



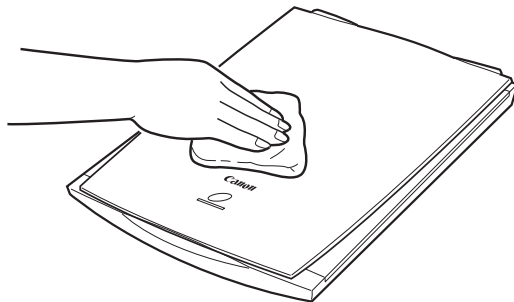
# Care and Maintenance

---

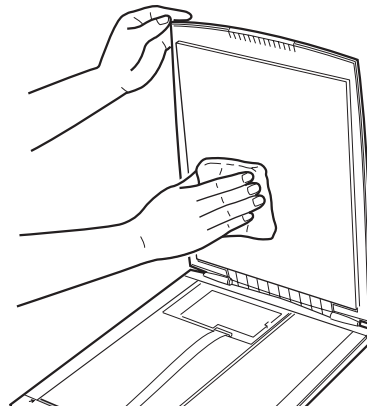
Clean off the dirt and dust that adheres to the exterior, document glass and document cover of the scanner during the course of ordinary operation using the following procedures.

- 1. Power down the computer and peripheral devices.**
- 2. Unplug the AC adapter from the electrical outlet.**
- 3. Dampen a clean, soft cloth with water and wring the cloth well. Use the well-wrung cloth to gently remove dirt and dust. Be particularly careful to remove any traces of dirt or liquid from the document glass by wiping it with a dry soft cloth.**
  - Do not dampen the connectors, ports or other metallic components on the scanner's back panel. Immediately remove any moisture that contacts these components by wiping them with a dry cloth.
  - Do not use a sodden cloth or apply a liquid directly to any portion of the scanner. Any moisture that enters the interior, the underside of the document glass or the sensors may degrade image quality and lead to malfunctions.
  - Never use substances containing thinners or benzene on the equipment. Use of these substances may deform, discolor or dissolve the casing.
- 4. Thoroughly remove any moisture or water vapor from the scanner with a dry cloth.**
  - Moisture left on the document glass or cover may damage photographs and other documents as well as not produce proper image results.

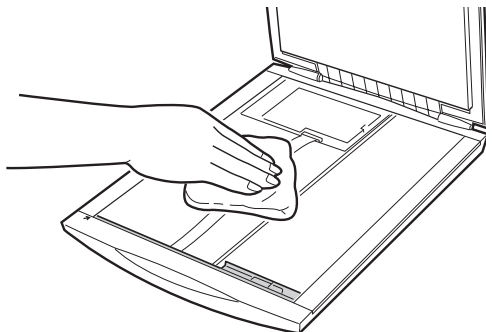
## Outer Casing



## Document Cover



## Document Glass



Never use substances containing thinners or benzene to clean the equipment

# Major Specifications

		CanoScan FB330P	CanoScan FB630P
Scanner Type		Flatbed (stationary document type)	
Scanning Element		CIS (Contact Image Sensor)	
Light Source		Three-color RGB LEDs	
Optical Resolution		300 x 600 dpi	600 x 1200 dpi
Selectable Resolution		25 to 2400 dpi	
Scanning Bit Depth	Color	12 bits Input/ 8 bits output for each color (RGB)	
	Grayscale	12 bits Input/ 8 bits output	
	Dithering	64 tones	
Scanning Speed*1	Color	17.1 msec./line	
	Grayscale	5.7 msec./line	
	B&W	5.7 msec./line	
Prescan Speed		15 sec.	
Interface		Parallel interface (IEEE 1284/ECP)	
Maximum Document Size		A4/Letter, 216 x 297 mm (8.5 x 11.7 inches)	

		<b>CanoScan FB330P</b>	<b>CanoScan FB630P</b>
<b>Power Requirements</b>		AC Adapter (100/120/230/240 V) *2	
<b>Power Consumption</b>		9 watts maximum, standby 5 watts (using supplied adapter)	
<b>Dimensions (W x D x H)</b>		256 x 372.5 x 39 mm (10.1 x 14.7 x 2.5 inches)	
<b>Weight</b>		Approximately 1.5 kg (3.3 pounds)	
<b>Operating Range</b>	<b>Temperature</b>	5°C to 35°C (41°F to 95°F)	
	<b>Humidity</b>	10%-90% (without condensation formation)	

\*1 Transfer time to computer is not included.

\*2 Type of AC adapter depends on the area where the scanner is used.

Subject to change without notice

# Index

## A

- AC Adapter [18, 26](#)
- Adobe Acrobat Reader [33, 37-45](#)
- Alignment Mark [17, 52](#)

## B

- Bookmark Display [40](#)

## C

- CanoCraft CS-P as a Stand-Alone Application [54](#)
- CanoCraft CS-P as a TWAIN Driver [56](#)
- CanoCraft CS-P Copy [32](#)
- Canon Printers [72](#)
- Care and Maintenance [75](#)
- CD-ROM [28-31, 46-48](#)
- CD-ROM Menu Program [28-31](#)
- Changing Pages [39](#)
- Cleaning [75-76](#)
- Components Guide [17](#)
- Connecting a Printer [24](#)
- Connecting to a Computer [22](#)
- Connections [22, 24, 26](#)
- Connector [22, 23](#)
- Copyright [7, 9](#)

## D

- Display CD-ROM Contents [46-48](#)

- Document Cover [17, 52, 75, 76](#)
- Document Glass [17, 52, 75, 76](#)
- Document Size [53, 77](#)

## E

- Electronic Manuals [30, 36](#)
- Epson Inkjet [25](#)
- Exiting the CD-ROM Menu Program [50](#)

## H

- Handling Precautions [12-13](#)

## I

- Install/Uninstall Software [30, 32-35](#)
- Install/Uninstall Software Button [34](#)
- Installing the Software [32-35](#)
- Insufficient Free Hard Disk Space [61](#)
- Insufficient Memory [61](#)
- Intellectual Property [9](#)

## L

- Language Selection [28](#)
- Language Select Window [28](#)
- Legal Restrictions [9](#)
- List of Electronic Manuals [36](#)
- Locations [10, 14-16](#)
- Locations to Avoid [15-16](#)
- Lock Switch [17, 20](#)

## M

Menu Window 28, 30

## N

No Scanners Detected Message 62

## O

OmniPage Limited Edition 33

Optical Character Recognition 33

## P

Parallel Cable 22, 23

Parallel Port Drivers 71-74

PC Port 18, 22-24

Placement 19

Positioning Documents 52-53

Power Cord 18, 26

Power Supply 11, 26

Power Switch 26

Power Terminal 18, 26

Powering Down the Scanner 26

Precautions with Printers 71

Printer Cable 24

Printer Connections 24

Printer Port 18, 24

Printer Settings 71-74

## S

Safety Precautions 10

Save Button 59

Scan Button 59

Scanning Unit 17, 21, 53

Scanning Unit Lock 17, 20

Setup 14

Software Requirements 32-33

Space Around the Scanner 14

Specifications 77

Standby Operation 8, 26

Start Button 54

## T

Temperature 14

Text Data 33

Thick Documents 53

Transport 18, 20, 21

Troubleshooting 61

TWAIN Driver 54, 56-59

TWAIN\_32-Compliant 56

## U

Unlocking the Scanner 20

Unsuccessful Installation 61

## V

Viewing Electronic Manuals 30, 36

## W

Windows 95 Parallel Port Driver 71

Windows Printing System (WPS) Printers  
25, 69, 71

## Z

Zooming In/Out in Electronic Manuals 41





# Customer Support Help Desk

---

## **CANON (UK) LTD.**

Woodhatch, Reigate  
Surrey RH2 8BF, United Kingdom  
*For technical support, please contact Canon Helpdesk.*

### **Helpdesk:**

P.O. Box 431, Wallington, Surrey SM6 0XU  
TEL: (08705) 143 723  
FAX: (08705) 143 340  
For sales enquiries: (0121) 666-6262

## **CANON FRANCE S.A.**

17, quai du Président Paul-Doumer  
92414 Courbevoie Cedex, France  
Tél. 01 4199 7777 Fax. 01 4199 7951

### **Hotline:**

Tél. 01 4199 7070

## **CANON DEUTSCHLAND GmbH**

Europark Fichtenhain A10, 47807 Krefeld, Postfach 528,  
47705 Krefeld, Germany  
TEL: 02151/345-0 FAX: 02151/345-102

### **CANON- Hotline-Service**

Customer Support: 02151/349-555  
Info-Desk: 02151/349-566  
Mailbox: 02151/349-577  
Telefax: 02151/349-588

## **CANON ITALIA S.p.A**

Palazzo L, Strada 6, 20089  
Milanofiori-Rozzano (MI), Italy  
TEL: 02/8248. 1 FAX: 02/8248. 4604  
Pronto Canon 02/8249. 2000  
<http://www.canon.it>

## **CANON OY AB**

Kornetintie, 3, 00380 Helsinki, Finland  
Tel: 010 544 20  
Help Desk: 0600-0-22606  
Fax: 010 544 4382

## **CANON SVENSKA AB**

S-127 88, Skärholmen, Sweden

## **BRUHN A.S.**

Vasekær 12, DK-2730 Herlev, Denmark  
Hotline: 44 88 26 66  
<http://www.canon.dk>

## **CANON NORGE AS**

Hallagerbakken 110, Boks 33, Holmia 1201 Oslo 12, Norway  
Tlf: 2262 9321 FAX. 2262 0615

## **CANON BENELUX NEDERLAND B.V.**

Neptunusstraat 1, 2132 JA Hoofddorp  
The Netherlands

## **CANON BENELUX BELGIUM N.V./S.A.**

Bessenveldstraat 7, 1831 Diegem, Belgium

## **CANON GmbH**

Zetschegasse 11, 1232 Wien, Austria



**CANON (SCHWEIZ) A.G.**

Industriestrasse 12, CH-8305 Dietlikon  
Switzerland  
Tel: 01/83561 61 Fax: 01/835 68 60  
Hotline: 157 30 20

**CANON ESPAÑA S.A.**

C/Joaquin Costa No 41, 28002  
Madrid, Spain  
Teléfono de atención al cliente:  
901-301301  
Tel.: 91-5384500 Fax.: 91-4117780

**CANON AUSTRALIA PTY. LTD.**

1 Thomas Holt Drive, North Ryde, Sydney N.S.W. 2113,  
Australia  
Info-Line: (02)9805 2864

**CANON NEW ZEALAND LTD.**

Fred Thomas Drive, Takapuna  
P.O. Box 33-336 Auckland, New Zealand  
Info-Line: 0900-522666

**CANON HONG KONG CO., LTD.**

10/F, Lippo Sun Plaza, 28 Canton Road  
Tsimshatsui, Kowloon, Hong Kong  
Tel: (852)2739 0802 Fax: (852)2739 7701

**CANON SINGAPORE PTE. LTD.**

79 Anson Road #09-01/06  
Singapore 079906

**CANON MARKETING SERVICES PTE. LTD.**

2, Alexandra Road, #04-01A  
Delta House  
Singapore 159919  
Tel: 65 2735311 Fax: 65 2733317

**CANON MARKETING (MALAYSIA) SDN. BHD.**

13A, Jalan 219, 46100 Petaling Jaya  
Selangor Darul Ehsan  
Malaysia  
Tel: 603-7577210/7570707/7579666  
Fax: 603 7563802/7563012

**CANON MARKETING (THAILAND) CO. LTD.**

2nd Floor, Indosuez House  
152 Wireless Road, Bangkok 10330  
Thailand  
Tel: 66-2-6514000 Fax: 66-2-6514096

**CANON MARKETING (PHILIPPINES) INC.**

Marvin Plaza Building,  
2153 Don Chino Roces Ave,  
Makati City  
Tel: 632-812-6047 Fax: 632-812-0067/810-9797

**CANON CANADA INC.**

6390 Dixie Road  
Mississauga, Ontario, L5T 1P7  
1-800 OK CANON (652-2666)  
<http://www.canon.ca>

**CANON LATIN AMERICA, INC.**

6505 Blue Lagoon Drive Suite 325  
Miami, Florida 33126, U.S.A.

**CANON EUROPA N.V.**

Bovenkerkerweg 59-61, P.O. Box 2262  
1180 EG Amstelveen, The Netherlands

**CANON INC.**

30-2 Shimomaruko 3-chome, Ohta-ku  
Tokyo 146-8501, Japan



## Free Manuals Download Website

<http://myh66.com>

<http://usermanuals.us>

<http://www.somanuals.com>

<http://www.4manuals.cc>

<http://www.manual-lib.com>

<http://www.404manual.com>

<http://www.luxmanual.com>

<http://aubethermostatmanual.com>

Golf course search by state

<http://golfingnear.com>

Email search by domain

<http://emailbydomain.com>

Auto manuals search

<http://auto.somanuals.com>

TV manuals search

<http://tv.somanuals.com>