

PA-2400/PA-2500

Connection Method For File Transfer

Manual

(Version 1.00)

March 1998

Casio Computer Co., Ltd.

Copyright ©1998. All rights reserved.

Table of Contents

Chapter	1.	Overview	3
Chapter	2.	Installation	4
	2.1	Installation of PC	4
	2.1.1	Connection	4
	2.1.2	Start Up	4
	2.1.3	Environment Setup	5
	2.2	Direct Connection of H/PC to Host PC	6
	2.3	Connection of H/PC to Host PC via I/O Box	6
	2.4	Installation of Satellite I/O Box (1 unit)	7
	2.5	Installation of Satellite I/O Box (multiple units)	8
Chapter	3.	File Transmission/Reception	9
	3.1	File Upload	9
	3.1.1	Specifying File from PC Side	9
	3.1.2	Specifying File from H/PC Side	11
	3.2	File Download	13
	3.2.1	Specifying File from PC Side	13
	3.2.2	Specifying File from H/PC Side	15

1. Overview

This manual describes the connection method for implementing file transfers between a Host PC (Windows-version Upload/Download Utility) and PA-2400/PA-2500 (hereinafter referred to as H/PC). Only the PA-2400 can be connected via a Satellite I/O Box.

Fig. 1.1 Example of Connection via Satellite I/O Box

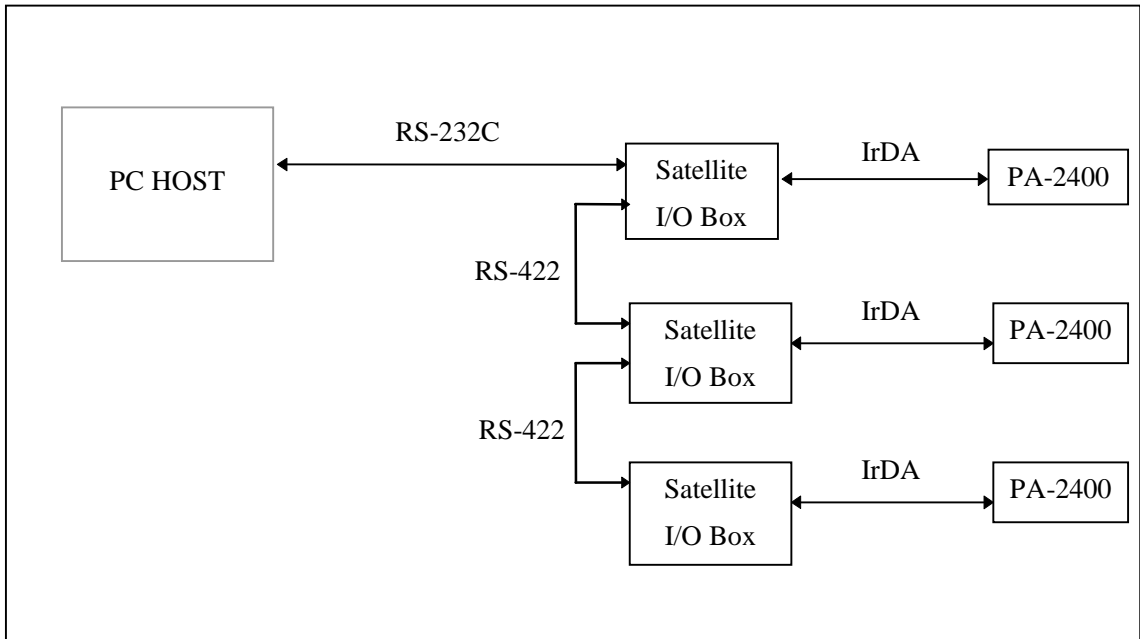
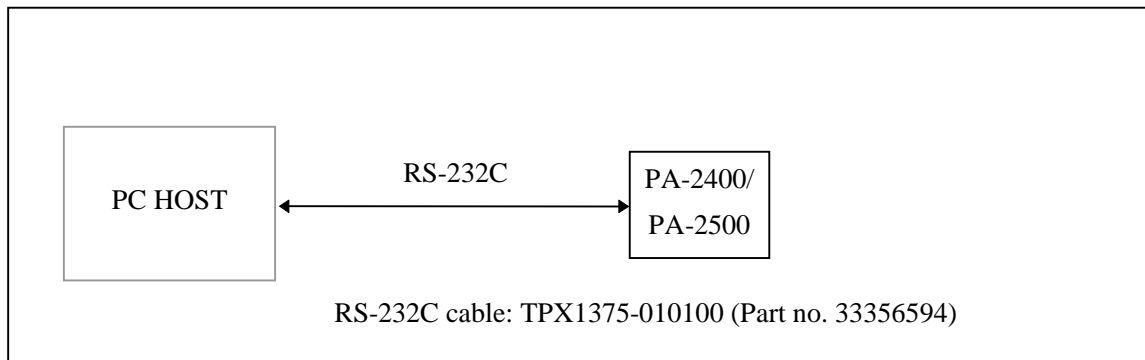


Fig. 1.2 Example of Direct Connection of H/PC to Host PC



2. Installation

2.1 Installation of PC

2.1.1 Connection

Plug the connection cable into the COM1 connector of the Host PC.

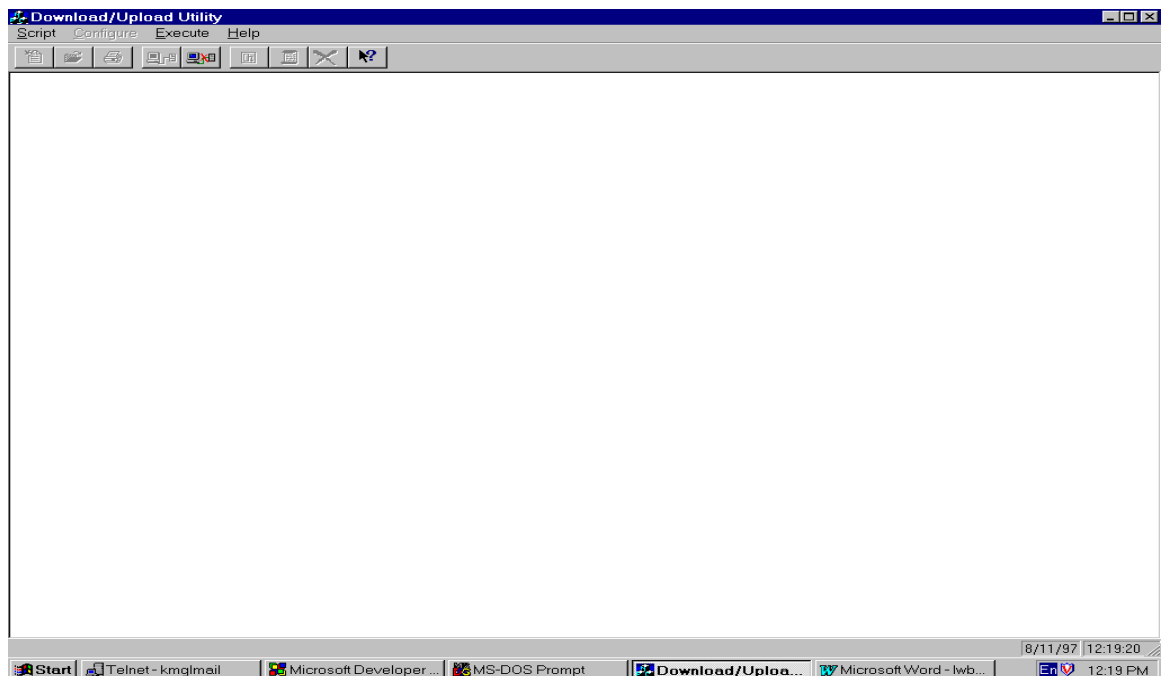
Note:

There are two types of connection cables: one is for direct connection to an H/PC, and the other is for connection via the I/O Box.

2.1.2 Start Up

Turn on the power to the PC to boot Windows95, then execute the Upload/Download Utility. Make sure that the main menu screen of the Upload/Download Utility appears.

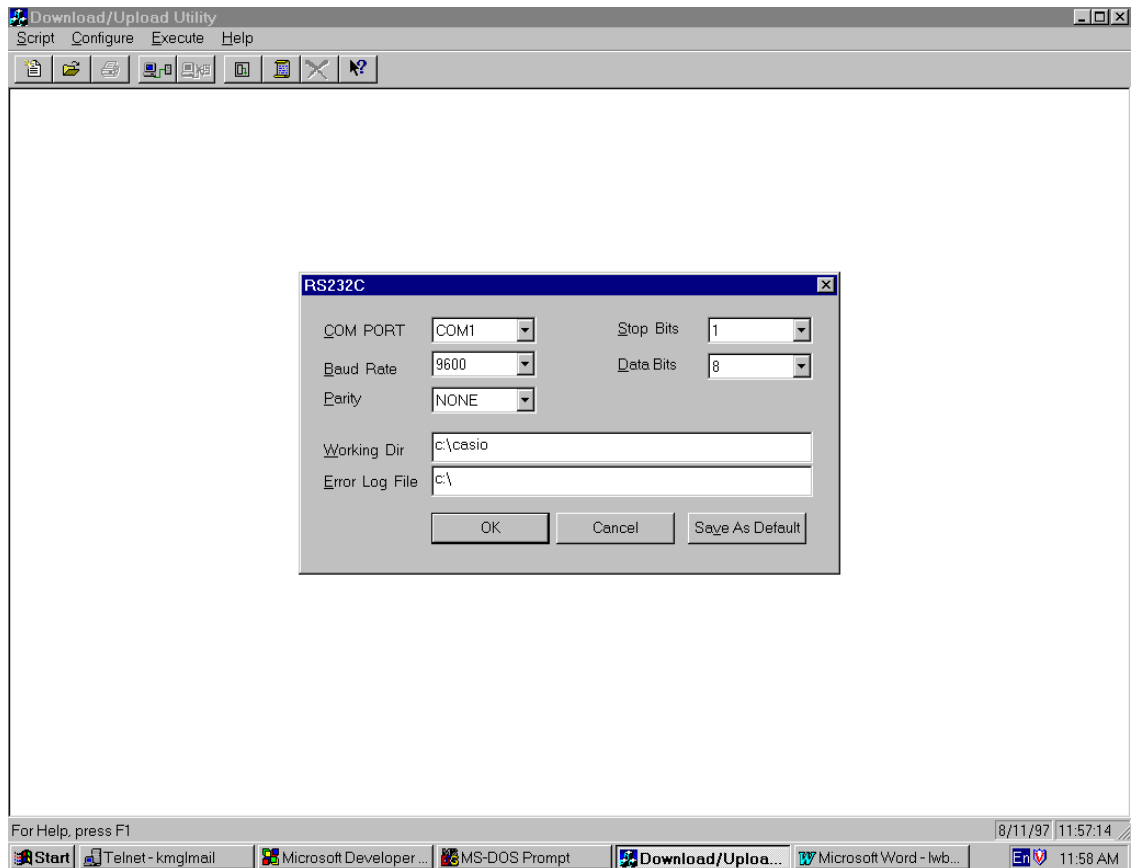
Fig. 2.1 Upload/Download Utility Main Menu Screen



2.1.3 Environment Setup

Select "RS-232C" from the Configure menu of the Upload/Download Utility, and then select "Settings"..

Fig. 2.2 Environment Setup Screen



Set up appropriate conditions by comparing them to the data described above.

Click on the [OK] button if setup has been completed.

Note:

The maximum baud rate that is achieved in communication may differ from the setting in the "Baud rate" entry field, depending on the state of the PC at that point in time.

2.2 Direct Connection of H/PC to Host PC

Connection

Plug the communication cable into the 16-pin interface of the H/PC to connect the Host PC.

Start-up

Turn on the power of the H/PC.

2.3 Connection of H/PC to Host PC via I/O Box

Connection

Mount the H/PC on the I/O Box.

Start-up

Turn on the power of the H/PC.

2.4 Installation of Satellite I/O Box (1 unit)

Environment Setup

- 1) Make sure that the POWER switch of the I/O Box is set to OFF.
- 2) Set the DIP switches provided on the rear panel to the following.

Table 2.1

1	2	3	4	5	6	7	8	9	10
ON	OFF	OFF	OFF	ON	OFF	ON	ON	ON	ON

Note:

The above settings assume that the communication speed is set to 115,200 bps.
To set a different baud rate modify the SW6, SW7, and SW8 settings as follows:

Table 2.2

Baud Rate	SW6	SW7	SW8
9,600 bps	OFF	ON	OFF
19,200 bps	ON	ON	OFF
38,400 bps	OFF	OFF	ON
57,600 bps	ON	OFF	ON
115,200 bps	OFF	ON	ON

Connection

- 1) Connect the AC adaptor to the I/O Box.
- 2) Connect the I/O Box to the PC with the RS-232C cross-type cable.

Start-up

- 1) Set the POWER switch to ON.
- 2) Make sure that the "READY POWER" lamp lights in green.

2.5 Installation of Satellite I/O Box (multiple units)

Note that the DIP switch settings should be made according to whether the I/O Box is connected directly to the PC or daisy-chained to other I/O Boxes.

The following environment setup example assumes a baud rate of 115.2 Kbps has been set.

Environment setup

- 1) Make sure that the POWER switch is set to OFF.
- 2) Set the DIP switches of the I/O Box to be connected with the PC as follows.

Table 2.3

1	2	3	4	5	6	7	8	9	10
ON	OFF	OFF	OFF	OFF	OFF	ON	ON	ON	ON

- 3) Set the DIP switches of other I/O Boxes as follows.

Table 2.4

1	2	3	4	5	6	7	8	9	10
ON	OFF	ON	OFF	OFF	OFF	ON	ON	ON	ON

Note:

Set No.5 of the DIP switch to ON if the C-OUT terminal is not chained to other I/O Boxes.

A terminator should be connected to it.

Table 2.5

5
ON

Connection

- 1) Connect an AC adaptor to each I/O Box.
- 2) Connect the I/O Box to the PC with the RS-232C cross-type cable.
- 3) Connect the C-OUT terminal of the I/O Box, which is connected to the PC, and the C-IN terminal of the other I/O Box with the RS-422 cable.
- 4) Chain together the remaining I/O Boxes. The I/O Box attached to the terminator must be at the end of the chain.

Start-up

- 1) Set the POWER switches of all the I/O Boxes to ON.

3. File Transmission/Reception

3.1 File Upload

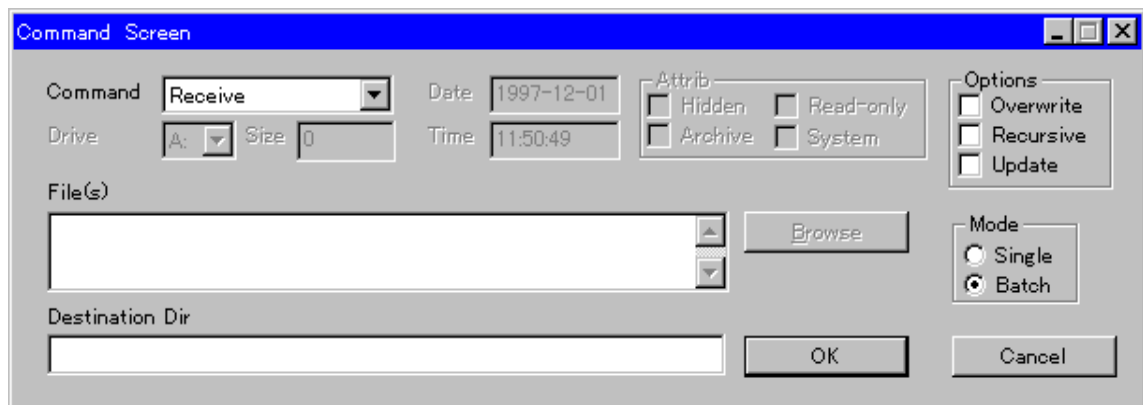
Transfers the files on the H/PC to the PC side.

3.1.1 Specifying File from PC Side

Setup at Host PC

Initiate the Upload/Download Utility on the PC, then select "Command" from the "Execute" menu to invoke the Communication Command screen.

Fig. 3.1 Communication Command Screen



In the Communication Command screen set up the following communication options:

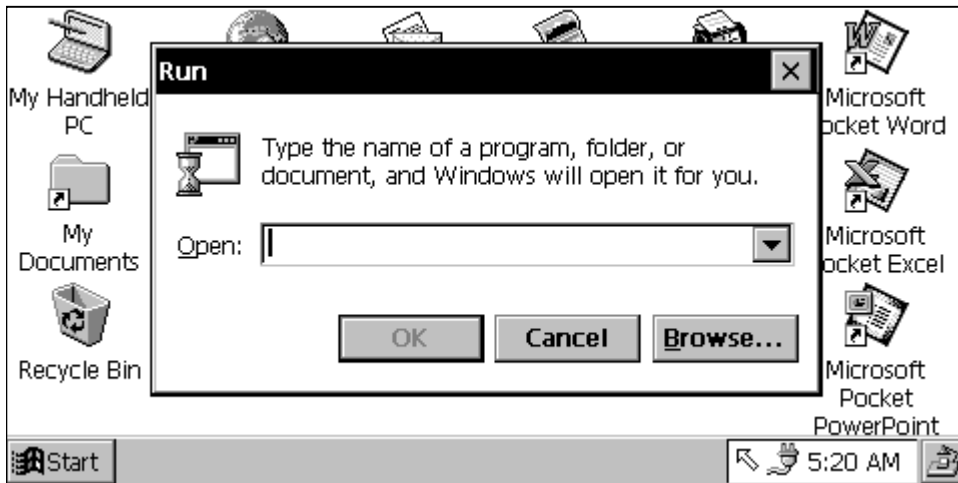
- Set the "Command" field to "Receive".
- In the "File" field enter the pathname of a file to be transferred to the H/PC.
- In the "Destination Dir" field enter the file transfer destination pathname on the PC side.

Click on the [OK] button if the setup has been completed.

Setup at H/PC

Execute "Run by specifying the file name" of the Start menu on the H/PC.

Fig. 3.2 H/PC File Name Specification Screen



Enter the following commands, according to the connection method used with the Host PC, and click on the [OK] button.

If I/O Box is used : \Windows\flce.exe

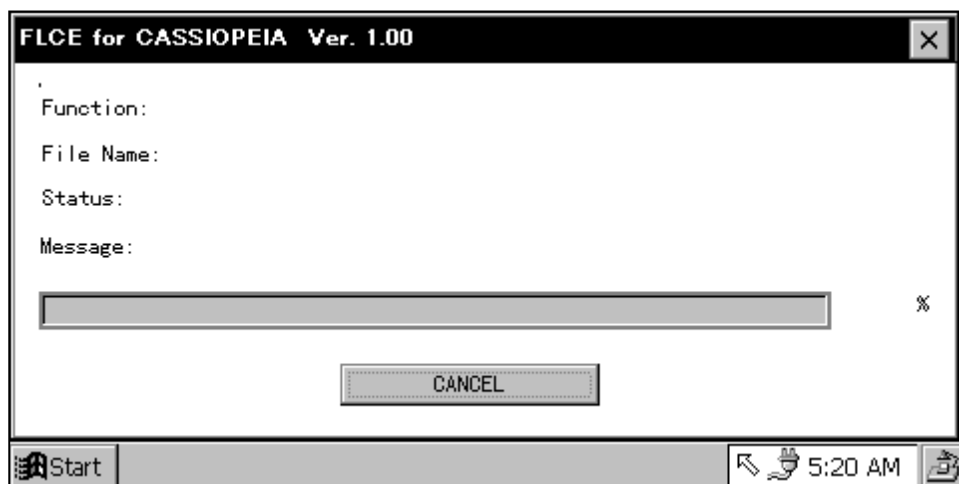
If RS-232C cable is used: \Windows\flce.exe /Y={com1, 115200, }

(baud rate: 115.2 Kbps)

Creation of the above described shortcut enables start-up from the shortcut.

If the [OK] button is clicked on, the following screen appears.

Fig.3.3



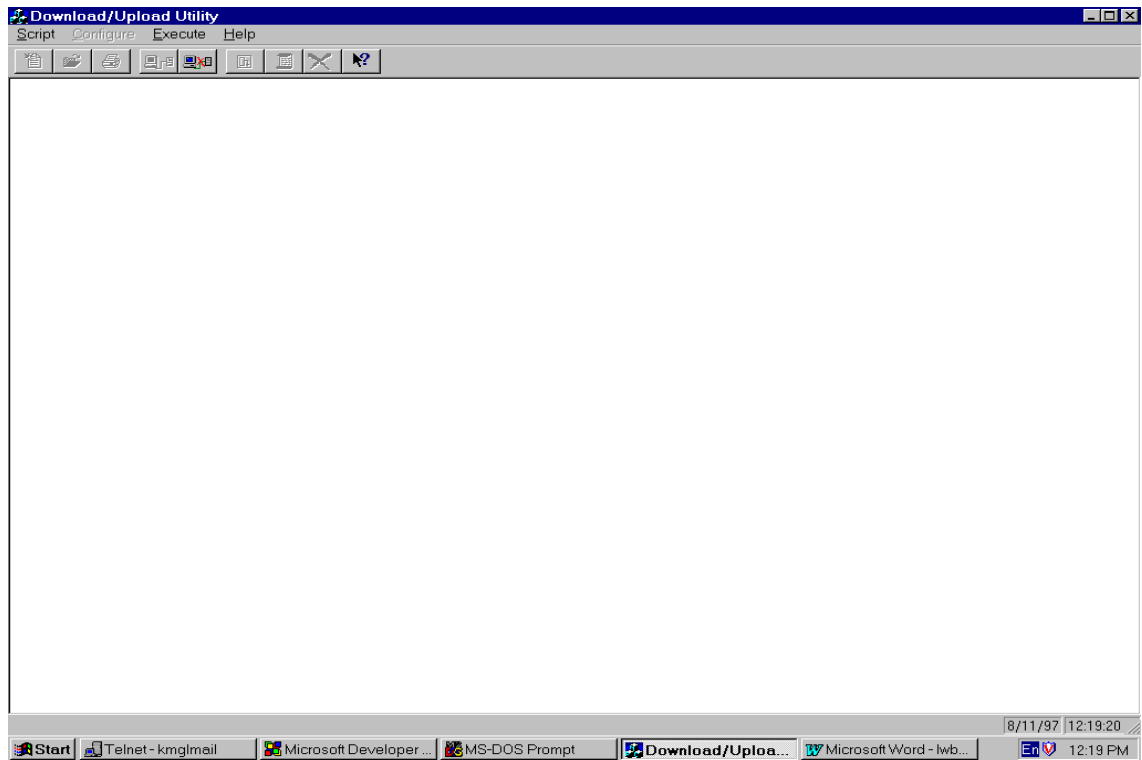
For information about the File Transfer Utility refer to the C Library Manual.

3.1.2 Specifying File from H/PC Side

Setup at Host PC

Initiate the Upload/Download Utility on the PC, then select "LinkManager" from the "Execute" menu.

Fig. 3.4 Server Mode Screen



Setup at H/PC

Execute "Run by specifying the file name" from the Start menu on the H/PC.

Fig. 3.5 H/PC File Name Specification Screen



Enter the following commands, according to the connection method used with the host PC, and click on the [OK] button. The following example command assumes that the "a.dat" file on the H/PC is transmitted to the drive C: on the Host PC.

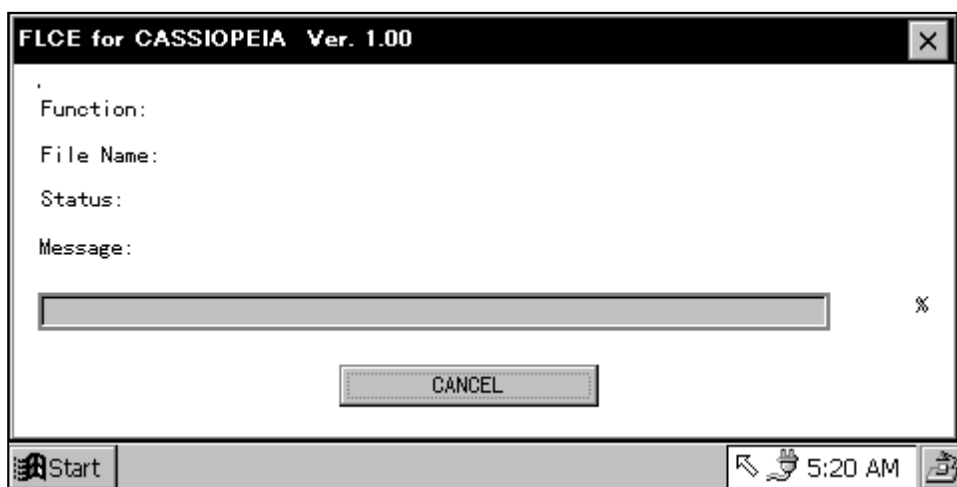
If I/O Box is used : \Windows\flce.exe /s "\a.dat" "C:\\"

If RS-232C cable is used: \Windows\flce.exe /Y={com1, 115200, } /s "\a.dat" "C:\\"

Creation of the above described shortcut enables start-up from the shortcut.

If the [OK] button is clicked on, the following screen appears.

Fig.3.6



For information about the File Transfer Utility refer to the C Library Manual.

If connecting via the I/O Box, mount the PA-2400 on the I/O Box.

If the setup has been completed, the PA-2400 restores the screen that was displayed before the utility was initiated.

3.2 File Download

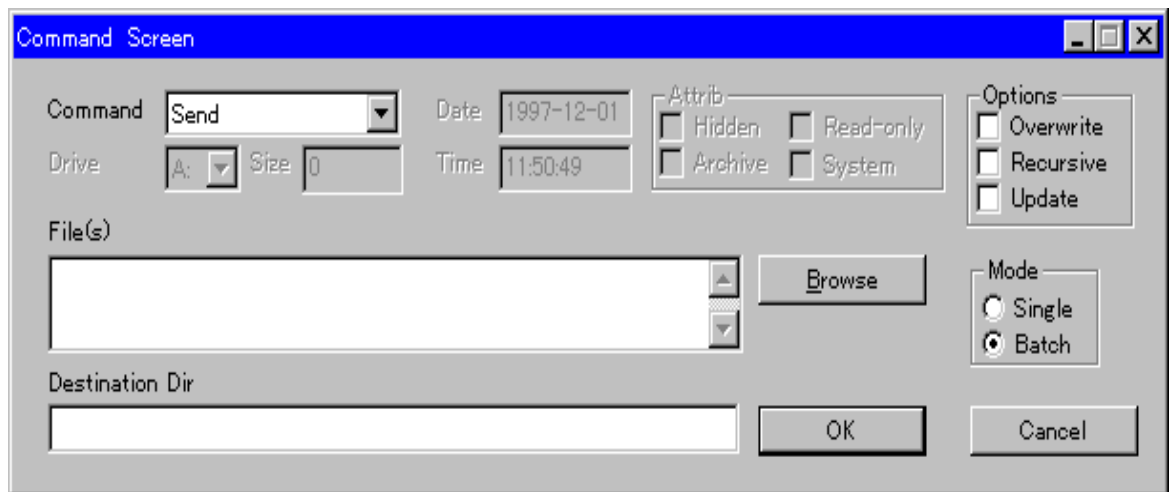
Transfers the files on the Host PC to the H/PC side.

3.2.1 Specifying File from PC Side

Setup at Host PC

Select "Command" from the "Execute" menu of the Upload/Download Utility to invoke the Communication Command screen.

Fig. 3.7 Communication Command Screen



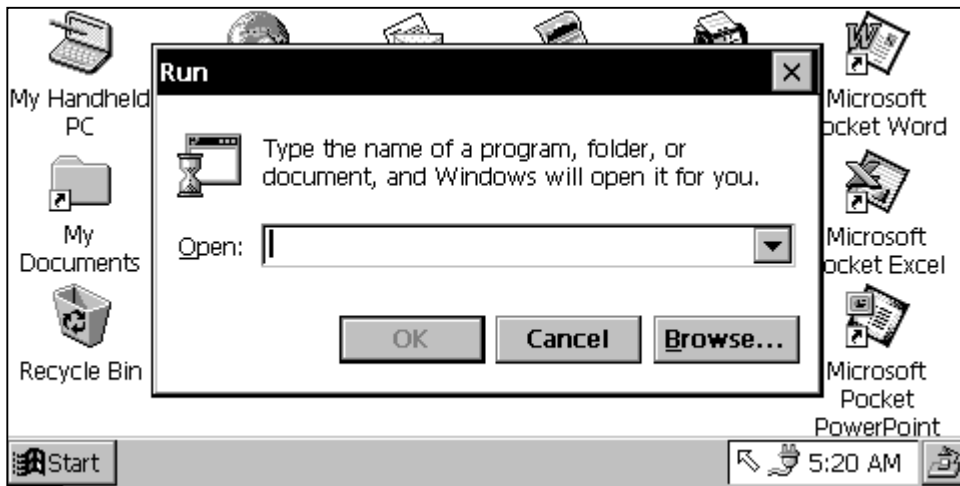
Set up the following communication options in this Communication Command:

- Set the "Command" field to "Send".
- In the "File" field enter the pathname of a file to be transferred to the H/PC.
- In the "Destination Dir" field enter the file pathname on the storage destination side.

Setup at H/PC

Execute "Run by specifying the file name" from the Start menu on the H/PC.

Fig. 3.8 H/PC File Name Specification Screen



Enter the following commands, according to the connection method used with the Host PC, and click on the [OK] button.

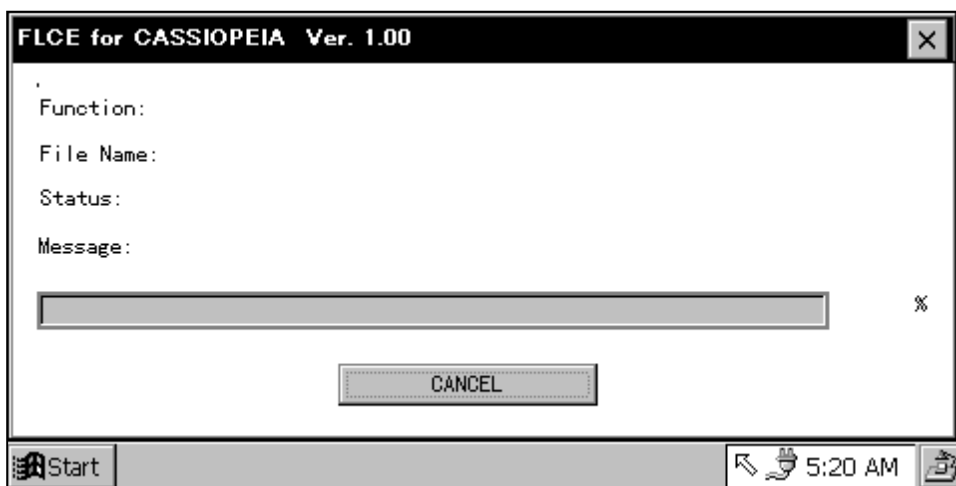
If I/O Box is used : \Windows\flce.exe

If RS-232C cable is used: \Windows\flce.exe /Y={com1, 115200, }

Creation of the above described shortcut enables start-up from the shortcut.

If the [OK] button is clicked on, the following screen appears.

Fig. 3.9



For information about the File Transfer Utility refer to the C Library Manual.

If connecting via the I/O Box, mount the PA-2400 on the I/O Box.

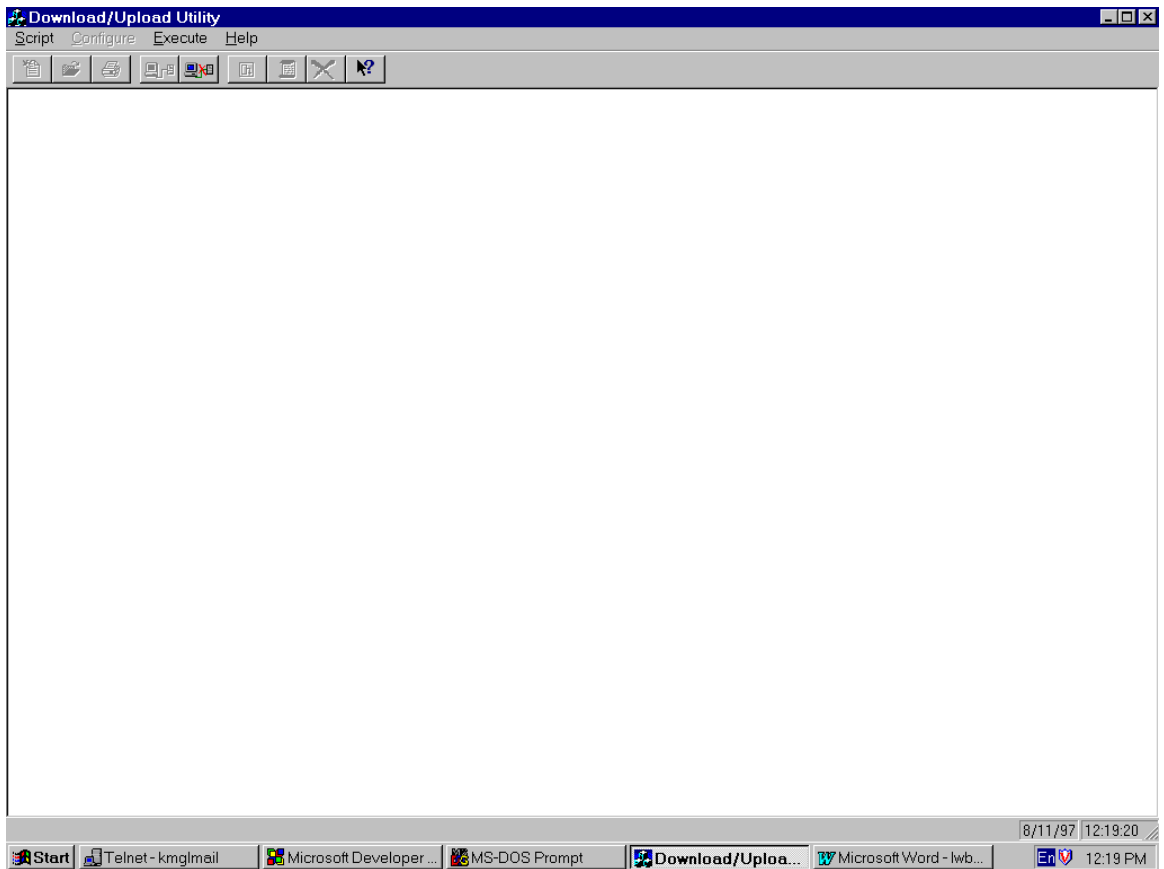
If the setup has been completed, the PA-2400 restores the screen that was displayed before the utility was initiated.

3.2.2 Specifying File from H/PC Side

Setup at Host PC

Initiate the Upload/Download Utility on the Host PC, then select "LinkManager" from the "Execute" menu.

Fig. 3.10 Server Mode Screen



Setup at H/PC

Execute "Run by specifying the file name" from the Start menu on the H/PC.

Fig. 3.11 H/PC File Name Specification Screen



Enter the following commands, according to the connection method used with the host PC, and click on the [OK] button. The following example command assumes that the "C:\a.dat" file on the PC is received under the "\\\" directory on the H/PC side.

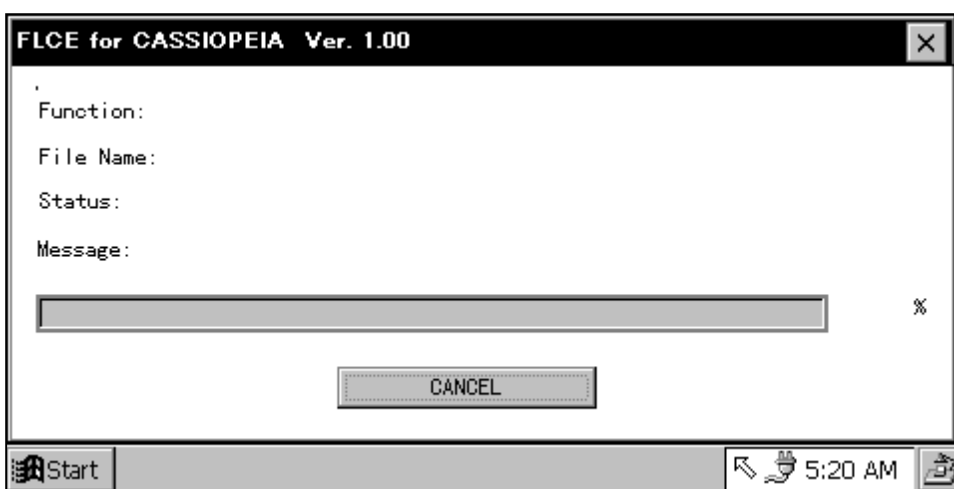
If I/O Box is used : \Windows\flce.exe /r "C:\a.dat" "\\\"

If RS-232C cable is used: \Windows\flce.exe /Y={com1, 115200, } /r "C:\a.dat" "\\\"

Creation of the above described shortcut enables start-up from the shortcut.

If the [OK] button is clicked on, the following screen appears.

Fig. 3.12



For information about the File Transfer Utility refer to the C Library Manual.

If connecting via the I/O Box, mount the PA-2400 on the I/O Box.

If the setup has been completed, the PA-2400 restores the screen that was displayed before the utility was booted up.

Free Manuals Download Website

<http://myh66.com>

<http://usermanuals.us>

<http://www.somanuals.com>

<http://www.4manuals.cc>

<http://www.manual-lib.com>

<http://www.404manual.com>

<http://www.luxmanual.com>

<http://aubethermostatmanual.com>

Golf course search by state

<http://golfingnear.com>

Email search by domain

<http://emailbydomain.com>

Auto manuals search

<http://auto.somanuals.com>

TV manuals search

<http://tv.somanuals.com>