



IMPORTANT NOTICE ABOUT INSTALLATION MSC-2Dx N

Copyright© 2001 CAT EYE Co., Ltd.
MSC2DxMM-010604 1 Printed in Japan
[066600120]



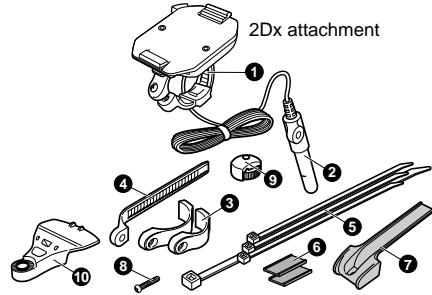
For the sake of easy installation and operation, some components have been changed.

When installing to your bicycle, follow the explanation written in this sheet, not the Quick Start manual.

Parts

Make sure that the following parts are included in the package.

- ❶ Bracket (with 2Dx attachment)
- ❷ Sensor
- ❸ Sensor Band-A (L/S)
- ❹ Sensor Band-B
- ❺ Nylon Tie
- ❻ Rubber Pad
- ❼ Band Holder Pad
- ❽ Screw
- ❾ Magnet
- ❿ Attachment for Aerofork



Installation

Follow the following instruction ❶ – ❹.

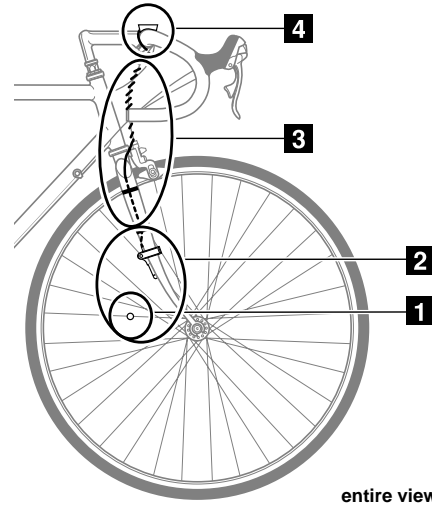
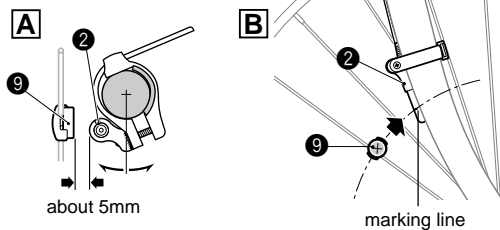


Important

Attach the sensor and the magnet properly so that their positions meet the following conditions **A** and **B**.

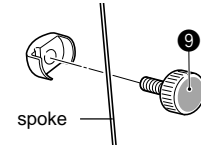
A The clearance between the sensor ❷ and the magnet ❾ should be about 5mm.

B Align center of the magnet ❾ and the marking line of the sensor ❷ while rotating the front wheel.



1 Magnet

Attach the magnet ❾ temporarily to the right side spoke of the front wheel.

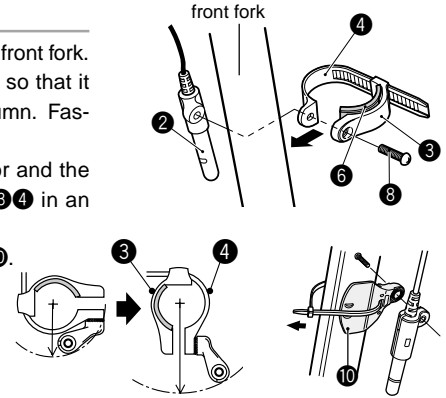


2 Sensor

Attach the sensor ❷ temporarily to the inside of the right front fork. Adjust the position of the sensor ❷ and the magnet ❾ so that it meets the conditions **A** and **B** in the "Important" column. Fasten them tightly.

Reference: If the clearance between the speed sensor and the magnet is wide, mount the sensor band ❸ ❹ in an opposite way as shown.

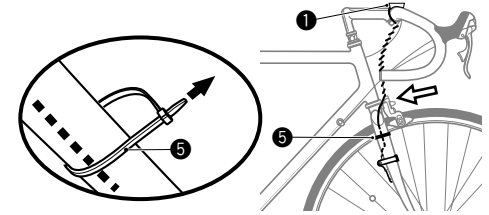
In case of aerofork, apply the attachment ❿.



3 Wire

Secure the wire along the front fork using the nylon ties ❺ and wind it round the brake cable up to handlebar.

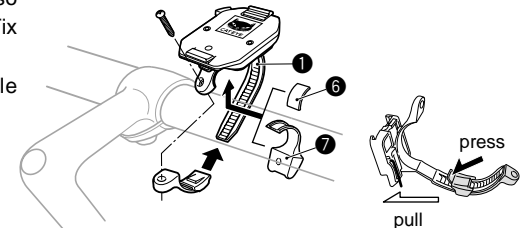
Note: Allow enough wire clearance in the area marked with ⇄.



4 Bracket

Use the rubber pad ❻ or band holder pad ❼ so that the bracket's band ❶ fits your handlebar. Fix it with the screw.

Reference: To release the band, pull it while pushing the area marked with ⇄.



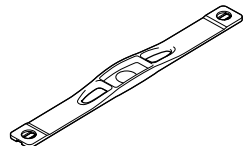
MSC-2Dx N SPARE ACCESSORIES



#166-5150

Lithium battery CR2032

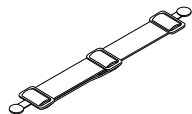
Pile au lithium CR2032
Lithiumbatterie CR2032
lithium batterij CR2032
Batteria al litio CR2032
Pila de Litio CR2032
リチウム電池CR2032



#169-9826

Replacement electrode belt

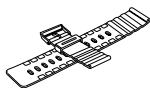
Sangle porte-électrodes
Elektrodenkurt
vervanging elektrodeband
Fascia sensore battito cardiaco
Correa de Electrodo de Repuesto
交換用MSC HR電極ベルト



#169-9816

Attachment belt

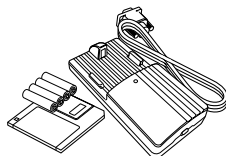
Sangle de fixation
Befestigungsgurt
bevestigingsband
Cinghia di fissaggio sensore battito cardiaco
Correa de Acoplamiento
装着ベルト



#249-9980

Wrist band kit

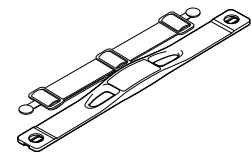
Bracelet
Handgelenk-Kit
polsband set
Cinturino
Kit de Correa de Muñeca
リストバンドキット



#240-1001

PC download kit

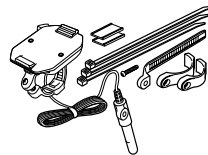
Kit de transfert de données
#240-1002
PC-Überspiel-Kit
#240-1003
polsband set
#240-1004
Kit interfaccia PC
#240-1005
Kit para cargar en PC
#240-1000
PCダウンロードキット



#169-9806

MSC Dx chest belt heart rate sensor kit

Kit de sangles et détecteur de rythme cardiaque MSC-Dx
Herzfrequenzsensor-Kit für Brustgurt
MSC Dx borstband met hartslagsensor set
Kit fascia sensore battito cardiaco MSC DX
MSC-Dx Kit de Sensor del Ritmo Cardíaco de la Correa Pectoral
MSC-Dxチェストベルト心拍センサーキット



#249-9990N

Bracket sensor kit

Kit de support d'unité principale et détecteur de vitesse
Halteungsset für Sensor
bracket sensor set
Kit supporto sensore velocità
Kit Soporte del Sensor
ブラケットセンサーキット



#249-9995

MSC-2Dx (bracket) attachment

Adaptateur MSC-2Dx
Aufsteckplatte (Halterung) für den MSC-2Dx
MS-2Dx (bracket) bevestiging
Attacco MSC-2DX
MSC-2Dx(ブラケット)アタッチメント



#169-9691

Wheel magnet

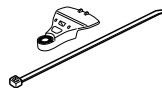
Aimant de roue
Radmagnet
wielmagneet
Magnete ruota
Imán de Rueda
ホイールマグネット



#169-9760

Magnet for composite wheel

Aimant pour roue en matière composite
Magnet für Carbonräder
magneet voor composiet wiel
Magnete per ruote in materiale composito
Imán para Ruedas de Palos
コンポジットホイール用マグネット



#169-9780

Attachment for Aerofork

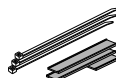
Fixation pour fourche AERO
Zusatz zur Federgabel
Bevestiging voor aerovork
Attacco per forcella aerodinamica
Sujección para horquilla aerodinámica
扁平フォーク用アタッチメント



#169-6280

Universal sensor band

Collier universel pour détecteur
Universalband für Sensor
universele sensorband
Fascetta universale sensore
Banda de Sensor Universal
ユニバーサルセンサーバンド



#249-9970

Attachment kit

Kit de fixation
Montage-Kit
bevestigingsset
Kit fascette di fissaggio
Kit de Acoplamiento
アタッチメントキット

CATEYE CO.,LTD.

2-8-25, Kuwazu, Higashi Sumiyoshi-ku,
Osaka 546-0041 Japan
e-mail: service@cateye.com
URL: http://www.cateye.com

Free Manuals Download Website

<http://myh66.com>

<http://usermanuals.us>

<http://www.somanuals.com>

<http://www.4manuals.cc>

<http://www.manual-lib.com>

<http://www.404manual.com>

<http://www.luxmanual.com>

<http://aubethermostatmanual.com>

Golf course search by state

<http://golfingnear.com>

Email search by domain

<http://emailbydomain.com>

Auto manuals search

<http://auto.somanuals.com>

TV manuals search

<http://tv.somanuals.com>