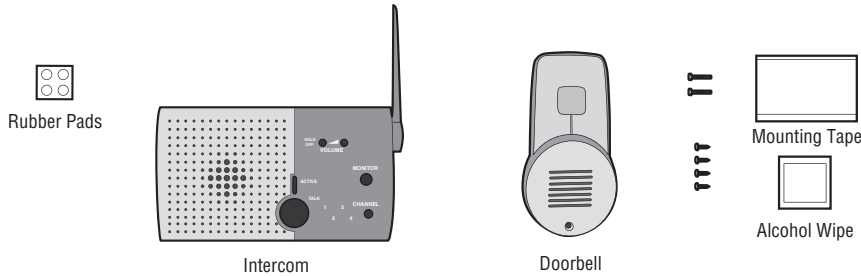


### Overview

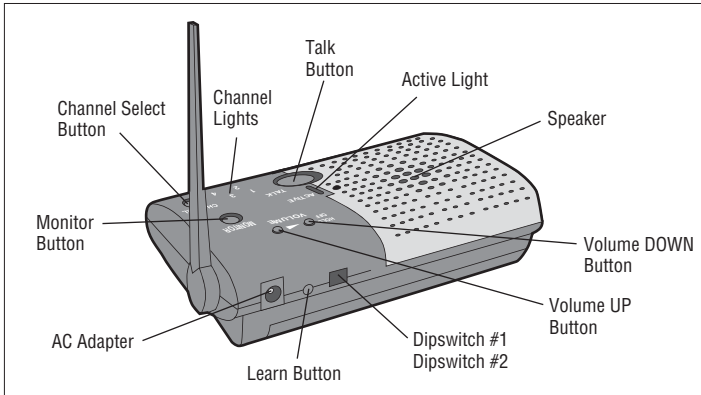
The Wireless Doorbell and Intercom can determine who is at the door from anywhere in the house. The doorbell and intercom have up to a 1000 foot (300 m) range and use a 900 MHz secure digital radio link. The intercom is compatible with various Chamberlain Wireless Products.

### Carton Inventory



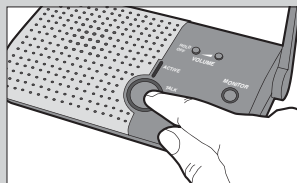
### Features

#### INTERCOM



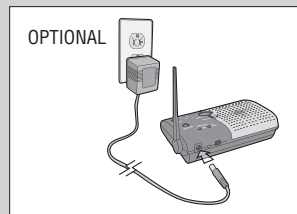
**On/Off:** To turn intercom ON, press Talk button. To turn intercom OFF, hold down the Volume DOWN button for 3 seconds.

**Talk Button:** Following the ringing of the doorbell by a guest, press and hold the Talk button to talk to the guest. Once the link to the doorbell is made, any other intercoms in the network cannot hear the conversation.



**Volume:** Pressing the Volume DOWN button will lower the volume and pressing the Volume UP button will increase the volume.

**Battery:** The AA Alkaline batteries (not provided) will last up to a year depending on use. When batteries are low intercom will emit three beeps every ten minutes. A DC Adapter (not provided) can also be used to power the intercom. In this case, the channel lights will remain on.



#### Voice Activation Mode (VOX):

Voice Activation Mode (VOX) allows a call to be answered without pressing the Talk button. Once a call is heard on an intercom which has been set to VOX, a response can be given by speaking loudly into the intercom. There will be a slight delay when VOX is first activated by a voice, but will continue to transmit audio until the speaking stops. To put intercom into VOX, place Dipswitch #1 to the UP position. While in VOX mode, a call may be initiated by pressing the Talk button.



#### DOORBELL

**Call Button:** To talk, press and release the Call button and all intercoms in the network will receive the signal. When holding down the Talk button on a different intercom, a secure channel is created and the other intercoms in the network do not hear the conversation. Once a secure link is made, the Call button on the doorbell does not need to be pressed to speak again.

**Battery:** The AA Alkaline batteries (not provided) will last up to a year depending on use. (Lithium batteries recommended for colder environments.)

**Alternate Chimes:** The doorbell can be set to ring with two different chime patterns, to identify which doorbell is signaling. To change chime pattern, set Dipswitch #2 to the UP position.



**Volume:** To increase the doorbell volume, set Dipswitch #4 to the UP position.



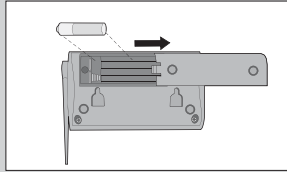
**Sensitivity:** To increase sensitivity on the doorbell set Dipswitch #3 to the UP position.



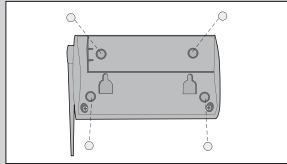
# Assemble

## INTERCOM

- 1 Install 4 AA Alkaline batteries (not provided).

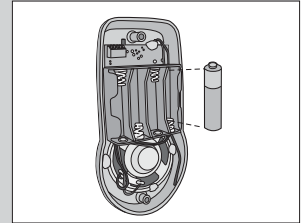


- 2 Adhere rubber pads to bottom. Repeat Steps 1 and 2 for any additional intercoms.



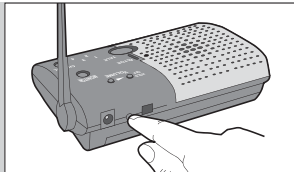
## DOORBELL

- 1 Install 4 AA Alkaline batteries (not provided). (Lithium batteries recommended for colder environments.)

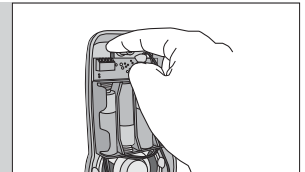


## Program Intercom to Doorbell

- 1 Press the Learn button on the intercom until a beep is heard.



- 2 Within 10 seconds press the Learn button on the doorbell until a beep is heard.

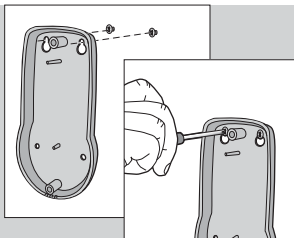


## Mount Doorbell

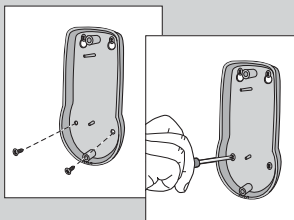
The doorbell can be mounted by using the included screws or by using the double-sided mounting tape. It is recommended to use the mounting tape on surfaces such as metal or glass.

### MOUNTING WITH SCREWS

- 1 Mount doorbell with small silver screws. Screw the top two screws halfway into the mounting surface. Place back of doorbell over screws. Tighten screws.

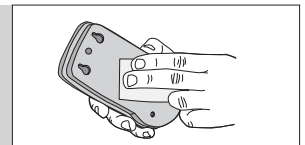


- 2 Put the remaining silver screws into the bottom holes of doorbell. Tighten screws.

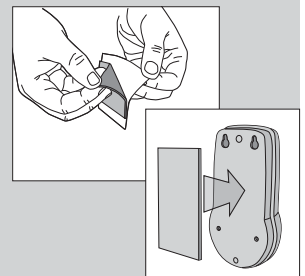


### MOUNTING WITH TAPE

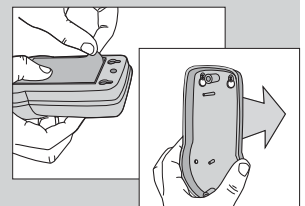
- 1 Clean back of doorbell and mounting surface using the alcohol wipe.



- 2 Peel off white paper from mounting tape. Firmly press mounting tape on back of doorbell.

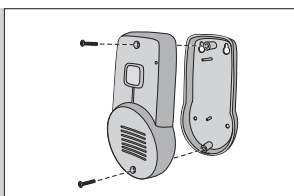


- 3 Peel paper from mounting tape. Firmly press doorbell onto mounting surface.



## Secure Cover

- 1 Secure cover with the two large black screws.

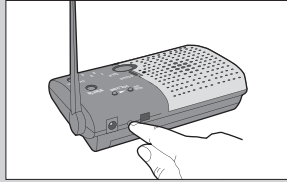


## Program Additional Intercoms

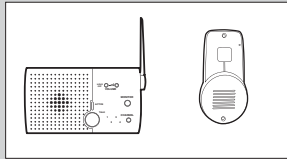
The intercom can be programmed to at least one other intercom to become a network or it can be programmed into an existing network.

### CREATE NEW NETWORK

- 1 Before programming, clear memory on all intercoms. Press the Learn button on the new intercom until a beep is heard.

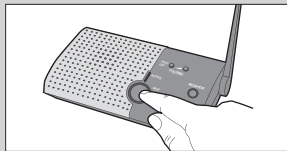


- 2 Within 10 seconds put the second intercom into Learn Mode (press the Learn button until a beep is heard).



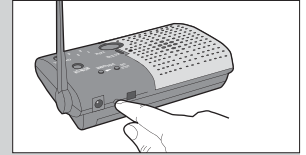
Each intercom will emit a tone when entering programming mode. It may take up to 3-1/2 minutes for a secure network to be established.

- 3 Press and release the Talk button to verify network is complete.

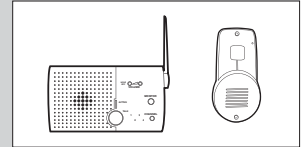


### ADD TO AN EXISTING NETWORK

- 1 Press the Learn button on the new intercom until a beep is heard.



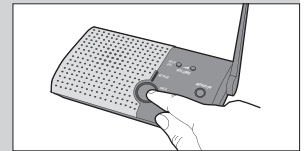
- 2 Within 10 seconds put any networked intercom into Learn Mode (press the Learn button until a beep is heard).



Each intercom will emit a tone when entering programming mode. It may take up to 3-1/2 minutes for a secure network to be established. Repeat for any additional intercoms.

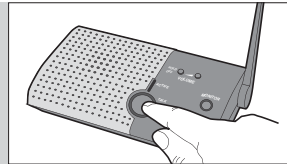
**NOTE:** Do not program new intercoms to each other before adding them to the network or they will form a separate network and the memory will need to be cleared.

- 3 Press and release the Talk button to verify network is complete.

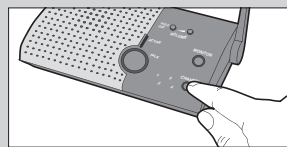


## Operation

**Talk Button:** To talk, hold down the Talk button. All intercoms in the network that are on the same channel will receive the signal. Release the Talk button when done talking and within 10-15 seconds press and hold the Talk button of a different intercom to make a secure channel between the two. Once the channel is made the other intercoms in the network cannot hear the conversation.



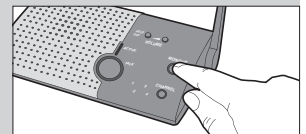
**Channel Button:** Press the Channel button to set intercom to one of four secure channels or the paging channel. The default channel for the intercom is the paging channel where all four channel lights are lit. An intercom on a channel can only hear an intercom on the same channel or on the paging channel.



**Conference Mode:** Conference Mode allows multiple intercoms to participate in a conversation compared to Normal Mode in which only two intercoms can communicate. All intercoms must be set to the same channel or the paging channel to be in Conference Mode. To put intercom in Conference Mode set Dipswitch #2 to UP position.



**Monitor Mode:** Monitor Mode is used to monitor the noise in a specific room. Place the intercom in the room that is to be monitored and press the Monitor button until a tone is heard. For extended Monitor usage, consider using a plug-in transformer. Any other networked intercom can listen to that room. If a specific channel is selected for Monitor Mode then only other intercoms on that channel or on the paging channel can listen. Press the Talk button to exit Monitor Mode. A tone will be heard indicating Monitor Mode is no longer active. Monitor mode functions only between base unit intercoms, not with the doorbell unit.



## Troubleshooting

**Intercom does not function.**  
Check batteries in intercom. If using a DC Adapter ensure that it is plugged in.  
Ensure intercom is connected to a network. See Program.  
Ensure that intercoms are on the same channel. See Operation.

**Intercom is not getting expected transmission range.**  
Keep antenna vertical. Keep intercom away from metal objects and electrical wiring. Cell phones, cordless phones, or other radio devices may also limit range.

# Troubleshooting

## Intercom beeps every ten minutes.

The battery is low in the intercom. Replace with AA Alkaline batteries or operate it with DC Adapter (not provided). A 12 volt, 300mA DC Adapter may be used (center positive polarity on the round plug).

## Need to clear intercom's memory.

Press and hold Learn button, an initial beep will be heard. Continue to hold until a second beep is heard (about 6 seconds). Ensure other intercoms are not activated during this time. Once memory is clear the intercom can be programmed to a new network.

## Static and feedback is heard in intercom.

The intercoms are too close to each other. A cordless phone, cell phone, or other radio devices can also cause static.

## Intercom is sending audio while no buttons are pressed.

The sending intercom is set to Monitoring Mode or Voice Activation Mode and will activate when sound is heard. It can be taken out of Monitoring Mode by pressing the Talk button. It can be taken out of Voice Activation Mode by setting Dipswitch #1 to DOWN position. See Features.

## Doorbell does not function.

Check batteries in doorbell. When you press the Call button you should hear a tone. Ensure doorbell is connected to a network. See Program Intercom to Doorbell.

The doorbell will not function when an intercom is in Monitor Mode.

## Doorbell is not getting expected transmission range.

Keep doorbell away from metal objects and electrical wiring. Do not mount doorbell on a tree, masonry, or metal surface. When used in buildings with stucco or cement walls, the range is greatly reduced.

## Doorbell beeps every ten minutes.

The battery is low in the doorbell. Replace with AA Alkaline batteries.

## Need to clear doorbell's memory.

Press and hold Learn button, an initial beep will be heard. Continue to hold until a second beep is heard (about 6 seconds). Once memory is clear the doorbell can be programmed to a new network.

## Intercom can not be programmed to network.

A network may contain up to 12 intercoms. It may be necessary to clear the network and reprogram all the intercoms to the network. See Programming Intercom.

## The intercom does not connect to another intercom and a green light is on longer than 3-1/2 minutes.

The intercom is out of range. Place the intercom closer to the other intercoms in the network, with the antenna pointing up. The other intercom in the network has no power. Replace the batteries. The intercom has not completed programming. Clear the intercom's memory and reprogram.

## The intercom VOX mode is not working.

The intercom will take about 40 seconds to reactivate after responding to a doorbell call.

***NOTE:** Manufacturer is not responsible for any radio or TV interference caused by unauthorized modifications to this equipment. Changes or modifications not expressly approved by the manufacturer could void the authority to operate the equipment.*

# Warranty

## ONE YEAR LIMITED WARRANTY

The Chamberlain Group, Inc. warrants to the first retail purchaser of this product that it is free from defect in materials and/or workmanship for a period of 1 year from the date of purchase.

This equipment has been tested and found to comply with the limits for a Class B digital device, pursuant to Part 15 of the FCC Rules. These limits are designed to provide reasonable protection against harmful interference in a residential installation. This equipment generates, uses and can radiate radio frequency energy and, if not installed and used in accordance with the instructions, may cause harmful interference to radio communications. However, there is no guarantee that interference will not occur in a particular installation. If this equipment does cause harmful interference to radio or television reception, which can be determined by turning the equipment off and on, the user is encouraged to try to correct the interference by one or more of the following measures:

- Reorient or relocate the receiving antenna.
- Increase the separation between the equipment and receiver.
- Connect the equipment into an outlet on a circuit different from that to which the receiver is connected.
- Consult the dealer or an experienced radio/TV technician for help.

# Accessories

41B238 ..... 12 Vdc 300mA Adapter

**FOR TECHNICAL SUPPORT DIAL OUR TOLL  
FREE NUMBER:  
1-800-528-9131**

**[www.chamberlain-DIY.com](http://www.chamberlain-DIY.com)**

NOTICE: To comply with FCC and/or Industry Canada rules (IC), adjustment or modifications of this receiver and/or transmitter are prohibited, except for changing the code setting or replacing the battery. THERE ARE NO OTHER USER SERVICEABLE PARTS.

Tested to Comply with FCC Standards FOR HOME OR OFFICE USE. Operation is subject to the following two conditions: (1) this device may not cause harmful interference, and (2) this device must accept any interference received, including interference that may cause undesired operation.

## Free Manuals Download Website

<http://myh66.com>

<http://usermanuals.us>

<http://www.somanuals.com>

<http://www.4manuals.cc>

<http://www.manual-lib.com>

<http://www.404manual.com>

<http://www.luxmanual.com>

<http://aubethermostatmanual.com>

Golf course search by state

<http://golfingnear.com>

Email search by domain

<http://emailbydomain.com>

Auto manuals search

<http://auto.somanuals.com>

TV manuals search

<http://tv.somanuals.com>