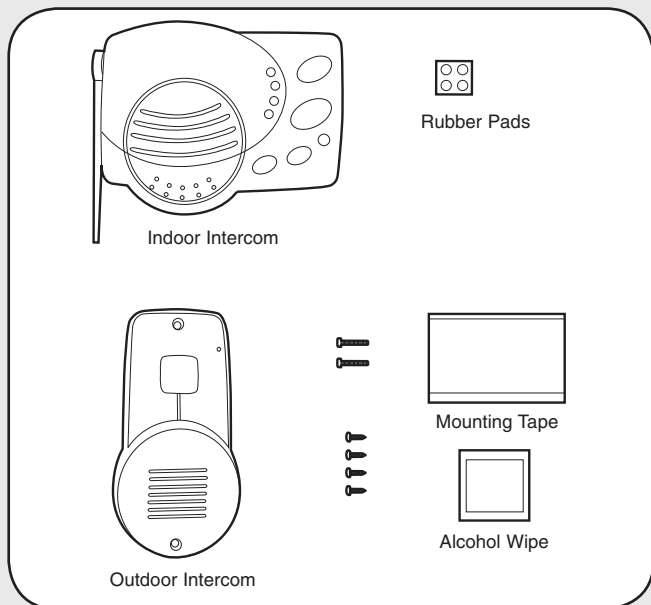


### Overview

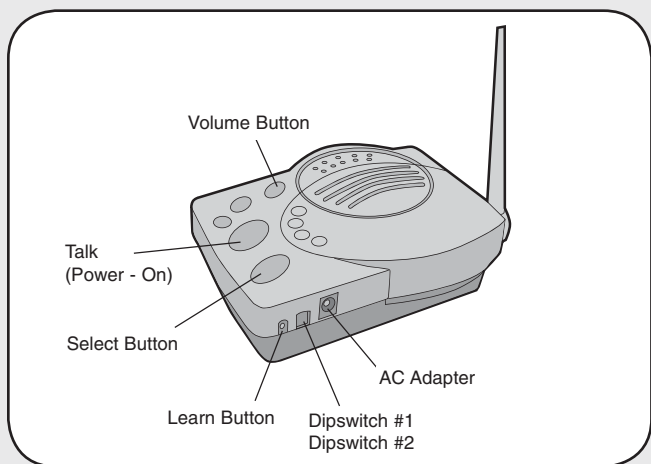
The Wireless Gate Access Intercom allows homeowners to communicate with guests at the gate and operate the gate from inside the house. The Indoor Intercom emits a doorbell sound and establishes a secure 900 Mhz digital radio link with the Outdoor Intercom. The Wireless Gate Access Intercom is compatible with various Chamberlain Wireless Products and all Chamberlain Gate Operators.

### Carton Inventory



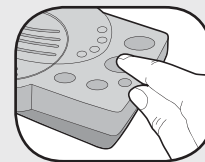
### Operation & Features

#### Indoor Intercom



**On/Off:** To turn Indoor Intercom ON, press any button. To turn Indoor Intercom OFF, hold down the Volume button for 5 seconds.

**Talk Button:** Following the ringing of the doorbell by a guest, press and hold the Talk button to talk to the guest. Once the link to the Outdoor Intercom is made, any other intercoms in the network cannot hear the conversation.



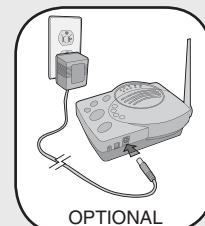
**Select Button:** During a conversation, the Select button can be pressed to open the gate. A beep will be heard and the gate will open. To open the gate when not in a conversation, press and hold the Select Button for 10 seconds.

**Volume:** Pressing the Volume button repeatedly will cycle through volume levels.

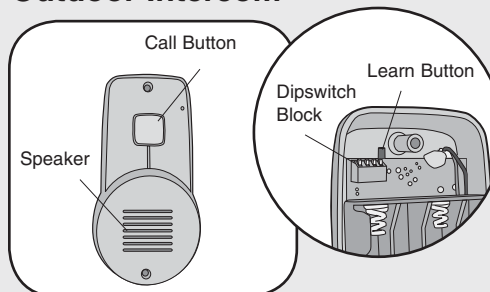


**Battery:** The AA Alkaline batteries (not provided) will last up to a year depending on use (Lithium batteries recommended for colder environments). When batteries are low intercom will emit two beeps every ten minutes.

An AC Adapter (not provided) can also be used to power the intercom. In this case, both the power and channel lights will remain on.



#### Outdoor Intercom



**Call Button:** To communicate with the Indoor Intercom, press and release the Call button. A doorbell sound will be heard on the Indoor Intercom. Once a secure link is made, the Call button on the Outdoor Intercom does not need to be pressed to speak again.

**Battery:** The AA Alkaline batteries (not provided) will last up to a year depending on use. (Lithium batteries recommended for colder environments.)

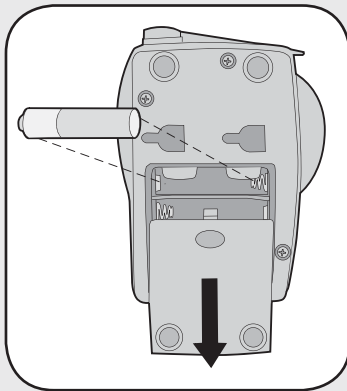
**Volume:** To increase the Outdoor Intercom volume, set Dipswitch #4 to OFF.

**Sensitivity:** To increase sensitivity on the Outdoor Intercom set Dipswitch #3 to OFF.

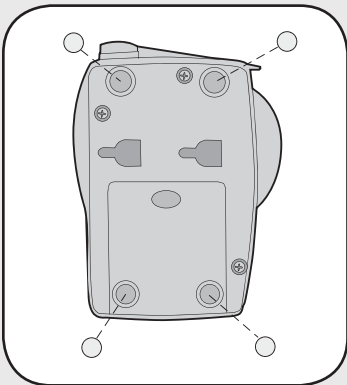
**NOTE:** Dipswitch #1 must always remain ON. Dipswitch #2 is not used.



## Assemble Indoor Intercom

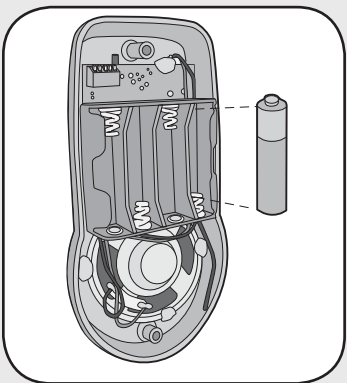


**Step 1:** Install 4 AA Alkaline batteries (not provided). (Lithium batteries recommended for colder environments.)



**Step 2:** Adhere rubber pads to bottom. Repeat Steps 1 and 2 for any additional intercoms.

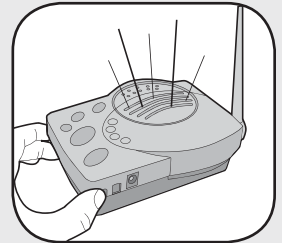
## Outdoor Intercom



Install 4 AA Alkaline batteries (not provided). (Lithium batteries recommended for colder environments.)

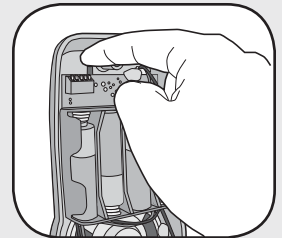
## Program Indoor Intercom to Outdoor Intercom

**Step 1:** Press the Learn button on the Indoor Intercom until a beep is heard.



**Step 2:** Within 10 seconds press the Learn button on the Outdoor Intercom until a multi-beep is heard.

**NOTE:** The Indoor Intercom will beep for approximately 30 seconds indicating that programming is successful. To stop the beeps earlier, press the Select Button on the Indoor Intercom.

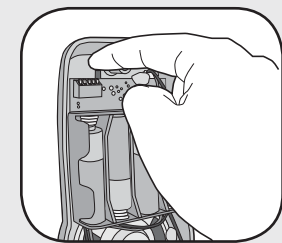


## Program Outdoor Intercom to Gate Operator

Refer to the owner's manual of the gate operator to find the location of the Learn button.

**Step 1:** Press the Learn button on the gate operator.

**Step 2:** Within 10 seconds press and hold the Learn button on the Outdoor Intercom until a beep is heard.

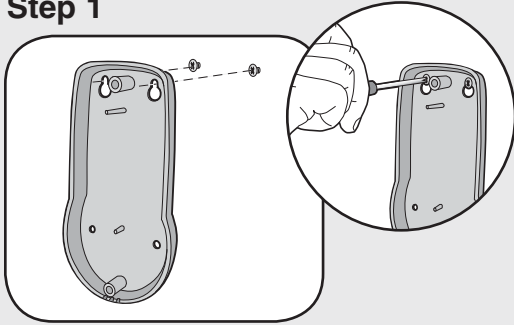


## Mount Outdoor Intercom

The Outdoor Intercom should be mounted where it is easily accessible to a driver. The Outdoor Intercom can be mounted by using the included screws or by using the double-sided mounting tape. It is recommended to use the mounting tape on surfaces such as metal or glass.

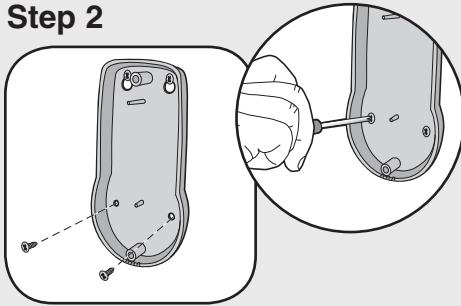
### Mounting with Screws

#### Step 1



Mount Outdoor Intercom with small silver screws. Screw the top two screws halfway into the mounting surface. Place back of Outdoor Intercom over screws. Tighten screws.

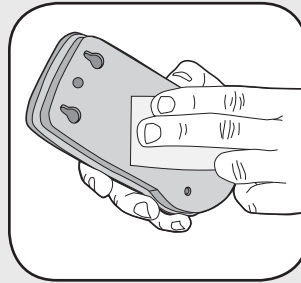
#### Step 2



Put the remaining silver screws into the bottom holes of Outdoor Intercom. Tighten screws.

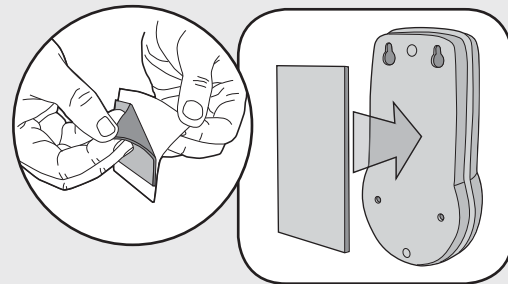
### Mounting with Tape

#### Step 1



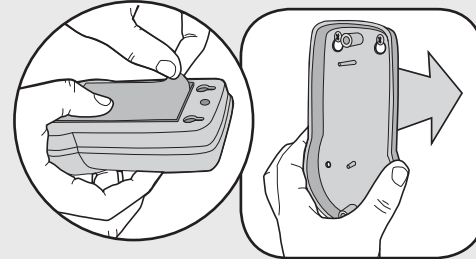
Clean back of Outdoor Intercom and mounting surface using the alcohol wipe.

#### Step 2



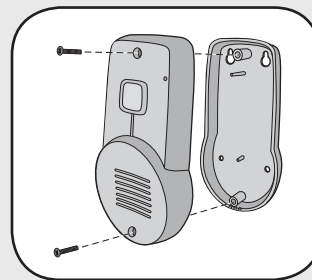
Peel off white paper from mounting tape. Firmly press mounting tape on back of Outdoor Intercom.

#### Step 3



Peel paper from mounting tape. Firmly press Outdoor Intercom onto mounting surface.

### Secure Cover

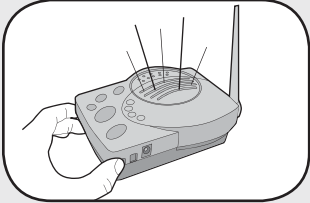


Secure cover with the two large black screws.

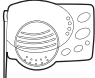
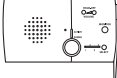
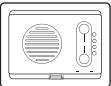
## Program Additional Intercoms

**NOTE:** Some older versions of Chamberlain Wireless Intercoms are not compatible with the Gate Access Intercom. Ensure that the additional intercoms state that they are compatible with Chamberlain's Gate Access Intercom.

The Indoor Intercom can be programmed to at least one other intercom to become a network or it can be programmed into an existing network. Any intercom that has been programmed into the network can respond to a call and operate the gate.

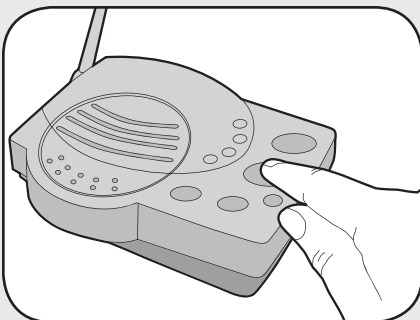


Press the Learn button on the Indoor Intercom until a beep is heard. Within 10 seconds put the new intercom into Learn Mode (refer to table below).

INTERCOM	LEARN MODE
 OR 	Press the Learn button until a beep is heard.
	Press and hold both buttons for 5 seconds.

Each intercom will emit a tone when programmed into network. Repeat for any additional intercoms.

**NOTE:** Do not program new intercoms to each other before adding them to the network or they will form a separate network and the memory will need to be cleared.



Press and release the Talk button on the Indoor Intercom to verify network is complete.

## Troubleshooting

### Indoor Intercom does not receive voice transmission from Outdoor Intercom.

Check the batteries in both intercoms. Ensure the Indoor Intercom is programmed to the Outdoor Intercom. See *Program Indoor Intercom to Outdoor Intercom*.

### Indoor Intercom is not getting expected transmission range.

Keep antenna vertical. Keep Outdoor Intercom away from trees, metal objects and electrical wiring. Cell phones, cordless phones, or other radio devices near the Indoor Intercom may also limit range.

### Indoor Intercom beeps once every ten minutes.

The battery is low in the Indoor Intercom. Replace with AA Alkaline batteries or operate it with AC Adapter (not provided). A 9-12 volt, 500mA AC Adapter may be used (center positive polarity on the round plug).

### Indoor Intercom beeps three times every ten minutes.

The battery is low in the Outdoor Intercom. Replace with AA Alkaline batteries.

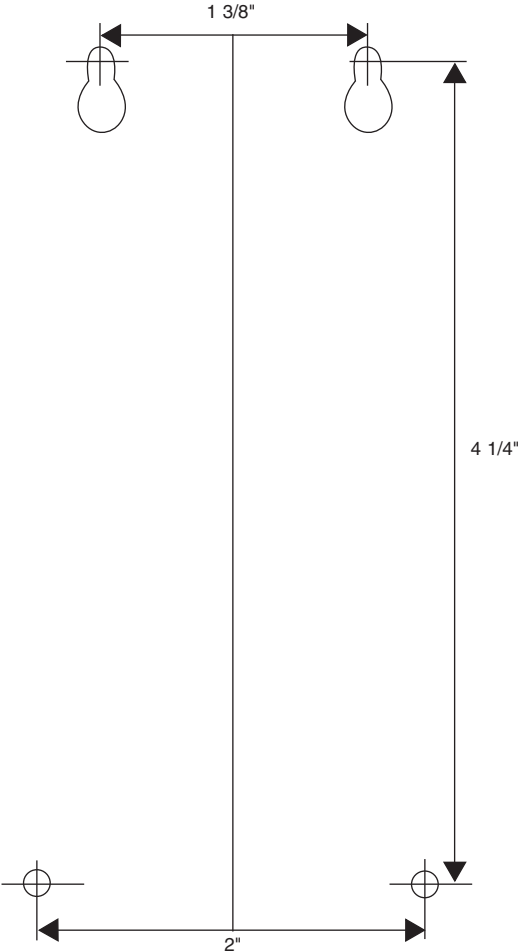
### Need to clear Indoor Intercom's memory.

Press and hold Learn button, an initial beep will be heard. Continue to hold until a second beep is heard (about 15 seconds). Ensure other intercoms are not activated during this time. Intercoms in the network that are on will signal during the clearing process. Once memory is clear the intercom can be programmed to a new network.

### Outdoor Intercom does not function.

Check batteries in Outdoor Intercom. When you press the Call button you should hear a tone. Ensure Outdoor Intercom is connected to a network.

# Mounting Template



**FOR TECHNICAL SUPPORT DIAL OUR TOLL FREE NUMBER:**

**1-800-528-9131**

**[www.chamberlain-DIY.com](http://www.chamberlain-DIY.com)**

NOTICE: To comply with FCC and or Industry Canada rules (IC), adjustment or modifications of this receiver and/or transmitter are prohibited, except for changing the code setting or replacing the battery. THERE ARE NO OTHER USER SERVICEABLE PARTS.

Tested to Comply with FCC Standards FOR HOME OR OFFICE USE. Operation is subject to the following two conditions: (1) this device may not cause harmful interference, and (2) this device must accept any interference received, including interference that may cause undesired operation.

## Free Manuals Download Website

<http://myh66.com>

<http://usermanuals.us>

<http://www.somanuals.com>

<http://www.4manuals.cc>

<http://www.manual-lib.com>

<http://www.404manual.com>

<http://www.luxmanual.com>

<http://aubethermostatmanual.com>

Golf course search by state

<http://golfingnear.com>

Email search by domain

<http://emailbydomain.com>

Auto manuals search

<http://auto.somanuals.com>

TV manuals search

<http://tv.somanuals.com>