

# Cisco Unity 3.1(6) Installation Guide: Installing a Windows 2000 Server for Component System

Document ID: 44332

---

## Introduction

### Prerequisites

Requirements

Components Used

Conventions

**Task 1: Start the Windows 2000 Server Initial Installation**

**Task 2: Complete the Windows 2000 Server Initial Installation**

**Task 3: Complete the Message Queuing Configuration**

**Task 4: Install Additional Windows 2000 Languages (Optional)**

**Task 5: Install Internet Explorer 5.5 with Service Pack 2**

**Task 6: Install MSXML3 and MSXML3 Service Pack 1**

**Task 7: Install Windows 2000 Server Service Pack 3**

**Task 8: Install the MS03-007 Hot Fix**

**Task 9: Change Windows Explorer Settings (Optional)**

**Task 10: Attach the Network Cable to the Server**

**Task 11: Verify IP Connectivity**

**Task 12: Configure Internet Explorer for the First Time**

**Appendix A: Create Bootable Installation Floppy Disks (Optional)**

**Appendix B: Configure the Most Common TCP/IP Parameters**

**Appendix C: Change the Name of the Computer Name (Optional)**

**NetPro Discussion Forums – Featured Conversations**

**Related Information**

---

## Introduction

**Note:** This document is part of a set of documents that explain how to determine which Cisco Unity installation option is correct for your network. These documents also explain how to install the correct Cisco Unity option in your network. These documents are intended to be used for new Cisco Unity installations only. If you are upgrading or otherwise changing an existing Cisco Unity configuration please refer to the correct online product documentation for Cisco Unity.

**Note:** These documents do not explain how to integrate your Cisco Unity server with your phone system or how to configure your Cisco Unity server. Once you have completed the initial Cisco Unity installation, you will be referred to the online product documentation for further instructions. Refer to the Next Steps section on the Index page.

**Note:** This document set is written for networks that run a Windows 2000 server.

**Note:** Return to the Index page for this documentation set.

There are two types of systems that Cisco Unity can be installed on:

- **Base Line System (BL):** A baseline system is a server that is purchased from Cisco or a Cisco reseller and that is shipped with a Platform Configuration CD. These systems include a copy of Windows 2000 Server.
- **Component System (CS):** Purchased as separate pieces (software and hardware), and all software

and hardware components must be installed by the installer of the Cisco Unity system. The Cisco Unity software package is purchased from Cisco or from a Cisco reseller. The package includes all required software except Windows 2000 Server.

This document explains how to install a Windows 2000 Server for the most common Cisco Unity Component System configurations. If you have a Base Line system, the tasks explained in this document are performed by the installation CD that came with your system.

This document does not include tasks such as installing and configuring Active Directory, SQL, Exchange, and so forth because these tasks are dependent on how the Cisco Unity is integrated into the network. Refer to Cisco Unity 3.1(6) Installation Guide: Selecting the Correct Installation Options for more information on which Cisco Unity option is correct for your network.

Installing Windows 2000 Server for a Cisco Unity Component System involves doing an initial installation from the Windows 2000 Server CD followed by a series of installation tasks using different CDs to install Service Packs, Hot Fixes, and other required components. The resulting server configuration will be ready to host any of the six possible Cisco Unity server configurations as explained in Cisco Unity 3.1(6) Installation Guide: Selecting the Correct Installation Options.

There are three appendices included at the end of this document. Two of them cover the optional tasks of changing the computer's name and creating bootable installation floppy disks if your CD-ROM drive is not a bootable device. If you plan to change the name of your computer, do it as soon as possible. There are a few applications such as SQL that do not work properly if you change the computer's name after you have installed them. The third appendix explains how to configure the minimum TCP/IP parameters that are required for most Cisco Unity servers. Cisco Technical Support recommends that you do not use Dynamic Host Configuration Protocol (DHCP) in order to configure the TCP/IP parameters for Cisco Unity servers.

## Prerequisites

You should assemble all of the CDs that you require before you begin. This includes these CDs:

- Windows 2000 Server Disk (Provided by customer, not included with a Cisco Unity Component System).
- The Cisco Unity CDs: CD 1; Service Packs CD; Additional Localizations CD (if you want to install additional languages).
- Internet Explorer 5.5 CD that shipped with Cisco Unity.
- Any additional drivers that you might require. For instance, if you use a Dell Server with a Dell PERC 2 Redundant Array of Independent Disks (RAID) controller, the driver diskette B3070 is required because the Windows 2000 Server installation program does not contain these drivers. This disk is available from Dell's web site .

**Note:** If the Windows installation fails because Windows cannot detect your hard disks and you do not have the correct third party disk drivers available, you need to contact the manufacturer of your server to obtain the necessary drivers. Please do not contact Cisco Technical Support for assistance in obtaining drivers for your server.

You should have a plan for how the hard disk or disks on your server will be partitioned. If you are using RAID you should configure the compartments before you start the Windows 2000 Server installation.

An explanation of disk partitioning and RAID configuration is beyond the scope of this document.

## Requirements

Before you attempt this configuration, ensure that you meet these requirements:

- Windows 2000 Server Administration.
- IP Addressing and related TCP/IP configuration options such as DNS, gateways, and so forth.

## Components Used

The information in this document is based on these software and hardware versions:

- Cisco Unity 3.1(6) and later
- Windows 2000 Server

The information in this document was created from the devices in a specific lab environment. All of the devices used in this document started with a cleared (default) configuration. If your network is live, make sure that you understand the potential impact of any command.

## Conventions

For more information on document conventions, refer to the Cisco Technical Tips Conventions.

## Task 1: Start the Windows 2000 Server Initial Installation

Complete this procedure in order to start the Windows 2000 server initial installation.

**Note:** If the server is already connected to the LAN and you are concerned about security vulnerabilities that will exist until you have installed all of the security patches, you should CDisconnect it before you begin this task. You are instructed to re-connect it later in this document.

1. If the Cisco Unity system key is a USB key, make sure that it is not inserted.

If it is inserted you must remove it before you start the Windows 2000 Server installation. Failure to do this causes Windows to install its driver for this key and Cisco Unity does not recognize it. If this happens, you need to de-install the Windows key driver and install the Cisco Unity driver before you start the Cisco Unity installation. This procedure is explained in each of the six configuration guides at the beginning of the section on installing Cisco Unity.

2. Insert **Windows 2000 Server Disk1** in the CD-ROM drive or, if the CD-ROM drive in the server is not bootable, insert **Windows 2000 Setup Disk 1** created in Appendix A in drive A.
3. Restart the server.
4. If you need to load a third party disk driver, continue with this step.

Otherwise proceed to step 9 and press **F6** as soon as this message appears at the bottom of the screen:

"Press F6 if you need to install a third-party SCSI or RAID controller."

**Note:** If you are not certain that you pressed F6 before the message cleared, restart the server and try again. This is the only opportunity you have to indicate to the installation program that you are installing a RAID driver.

5. When the text "Setup could not determine..." appears, press **S** to specify an additional device.
6. When prompted, insert your floppy disk with your driver in drive A, and press **Enter**.
7. If you are using a Dell server, the correct Windows 2000 Server driver is usually DELL PERC 2 2, 2/Si, 3/Si, 3/Di Raid Controllers. Select your driver and press **Enter**.

8. When the text "Setup will load support..." appears, press **Enter**.

**Note:** If you see a message that indicates the installation cannot continue because a hard disk could not be detected, it is possible that you have not used the correct third party Windows 2000 Server driver. It is also possible that the hard disk drives or the hard disk controller in your server is faulty. Contact the manufacturer of your server to obtain support for this issue.

9. Follow the on-screen prompts until you are prompted to specify the partition on which to install Windows 2000.

**Note:** If you see a message that indicates the installation cannot continue because a hard disk could not be detected, it is possible that you require a third party Windows 2000 Server driver. It is also possible that the hard disk drives or the hard disk controller in your server is faulty. Contact the manufacturer of your server to obtain support for this issue.

10. If no operating system is installed on the server, skip to step 11.

If you are installing Windows 2000 on the same partition where an operating system is already installed, select and delete that partition. If there are other partitions on the same disk drive, you might want to delete them as well. However see the caution below before you do this.



**Caution:** If your server uses a disk partition to store files required to manage its hardware configuration, do not delete this partition.

11. If you already have your hard disks partitioned the way that you want, select the partition on which to install Windows 2000 and proceed to step 12.

Otherwise, you need to create the partition first by selecting the hard disk and then selecting the **Create Partition** option. If you do not want to allocate the entire disk to the Windows 2000 Server, enter the appropriate partition size. Make certain that the partition that you create is large enough for the Windows 2000 Server and any other applications such as MSDE, SQL, Exchange, and so forth, that you want to install on the same partition. 10 GB is usually sufficient for a Windows 2000 Server partition.

**Note:** If you have RAID configured, you can only install a Windows 2000 Server on a RAID type 0 compartment.

**Note:** If you have other disks, you can either configure them now or after you have completed the Windows 2000 Server installation by using the Hard Disk Manager tool in the Computer Management Management Console (MMC). See your Windows 2000 Server documentation or the online help for more information on this subject.

12. If the partition you selected in step 11 is unformatted, select **Format the Partition Using the NTFS File System**, and press **Enter**.

## Task 2: Complete the Windows 2000 Server Initial Installation



**Caution:** You will be asked to provide a password for the Administrator account. Do not lose this password. It cannot be recovered. If you forget the Administrator account password and you do not have an alternative administrative account configured so that you can reset the Administrator account password, you will have to re-install the operating system and all of the applications.

This task provides the responses that are applicable in most Cisco Unity installations. If you are certain that your configuration requires an option that is listed as [No] below, you can override this suggestion.



**Caution:** If you elect to install an option that is listed as [No] below and it causes a conflict with Cisco Unity, you need to unconfigure it. It might not be supported on a server that runs Cisco Unity.

1. License Mode [**Seats**]
2. Accessories and Utilities [**See below**]

- ◆ Accessibility Wizard [**No**]
- ◆ Accessories [**Optional**]
- ◆ Communications [**No**]
- ◆ Games [**No**]
- ◆ Multimedia [**No**]

3. Certificate Services [**No**]
4. Indexing Service [**No**]
5. IIS [**See below**]

- ◆ Common files [**Yes**]
- ◆ Documents [**Optional**]
- ◆ FTP [**Optional – has security implications**]
- ◆ FrontPage 2000 Server Extensions [**No**]
- ◆ IIS Snap-In [**Yes**]
- ◆ Internet Services Manager [**Yes**]
- ◆ NNTP [If installing Exchange 2000 on this server – **Yes** otherwise **No**]
- ◆ SMTP [If installing Exchange 2000 on this server – **Yes** otherwise **No**]
- ◆ Visual Interdev RAD Remote Deployment Support [**No**]
- ◆ WWW Server [**Yes**]

6. Management and Monitoring Tools [**See below**]

- ◆ Connection Manager Components [**No**]
- ◆ Network Monitor Tools [**Optional**]
- ◆ SNMP [**Optional**]

7. Message Queuing Service [**Yes**]
8. Networking Services [**See below**]

- ◆ Com Internet Services Proxy [**No**]
- ◆ DNS [**Optional**, might be installed later if server will be running Active Directory]
- ◆ DHCP [**Optional**]
- ◆ Internet Authentication Services [**No**]
- ◆ QOS [**No**]
- ◆ Simple TCP/IP [**No**]
- ◆ Site Server ILS [**No**]
- ◆ WINS [**No**]

9. Other network file and print services [**No**]
10. Remote Installation services [**No**]
11. Remote Storage [**No**]
12. Script Debugger [**No**]
13. Terminal Services [**Yes**, Administration only]
14. Terminal Services Licensing [**No**]
15. Windows Media Services [**No**]
16. Network Configuration [**See below**]

- ◆ Cisco Technical Support recommends that you do not use DHCP to configure the TCP/IP settings for your server. Manually configure the IP address, gateway, DNS servers, and other options.

- ◆ If the server that you are configuring is going to run Active Directory, you must enable **File and Print Sharing For Microsoft Networks**. This is required because Active Directory uses Networking in order to share the Active Directory files. This applies even when the server is the only one in the entire network that runs Active Directory because the server accesses the files locally via the share path \\server\_name\directory\_name\file\_name.
17. At the end of the installation, click **Finish**, and the server automatically restarts.
  18. Log onto Windows 2000 as Administrator.
  19. When the login process is complete you might see the Windows 2000 Configure Your Server menu screen which indicates you need to **Finish Setup**.

If you do leave it open, it is used in the next task. If you do not complete Finish Setup, the next task explains how to finish the process manually.

## Task 3: Complete the Message Queuing Configuration

You installed Message Queuing in Task 2. It requires a few final configuration tasks before the installation is complete.

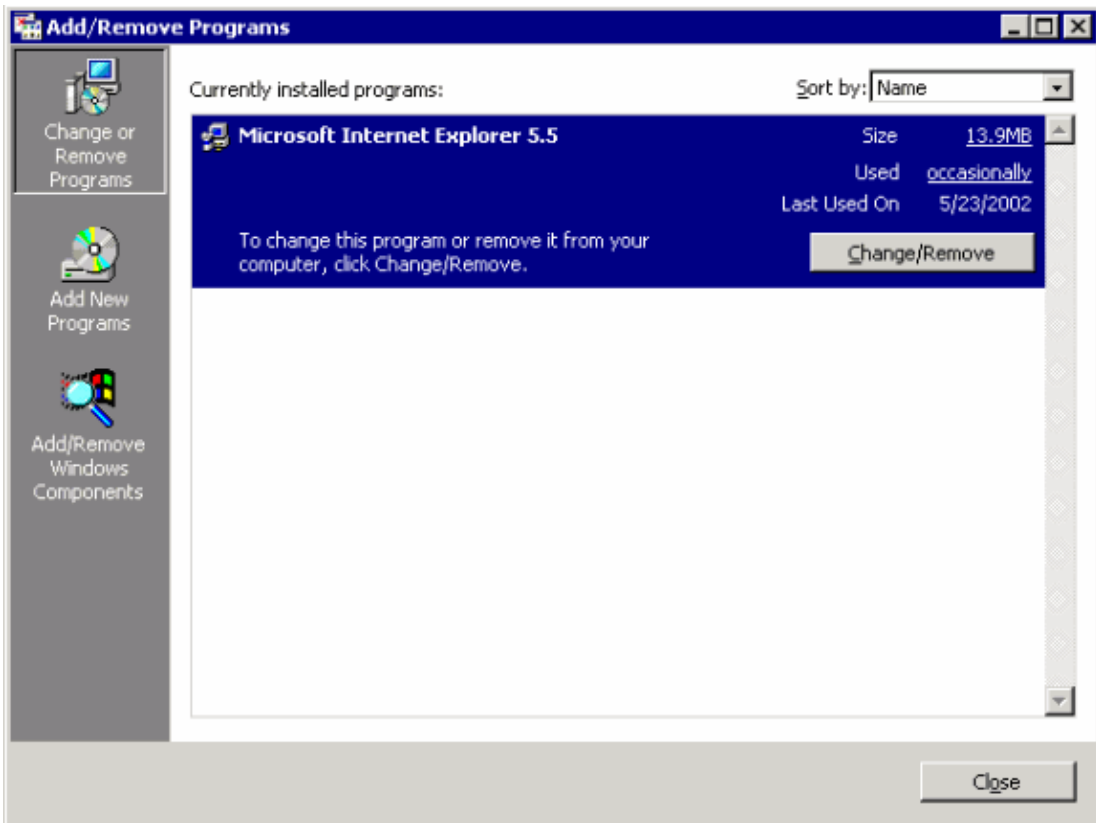
1. If you see the Windows 2000 Configure Your Server menu screen similar to this image, select **Finish Setup**.

Then proceed to step 3. If you do not see this screen, proceed to step 2.



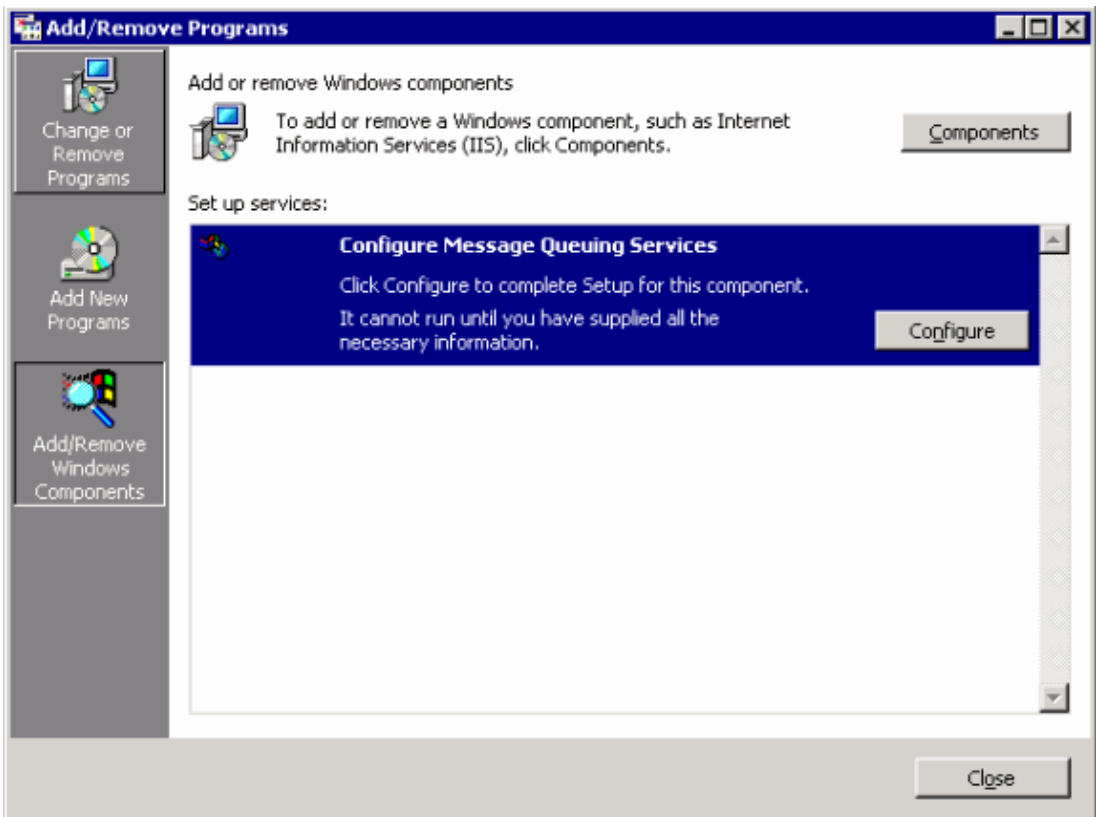
2. If you do not have the Windows 2000 Configure Your Server menu screen open, start the process for completing the Message Queuing feature manually. Select **Settings > Controls Panel > Add/Remove Programs**.

A menu screen similar to this image appears.



3. Select the **Add/Remove Windows Components** option.

A menu screen similar to this image appears.

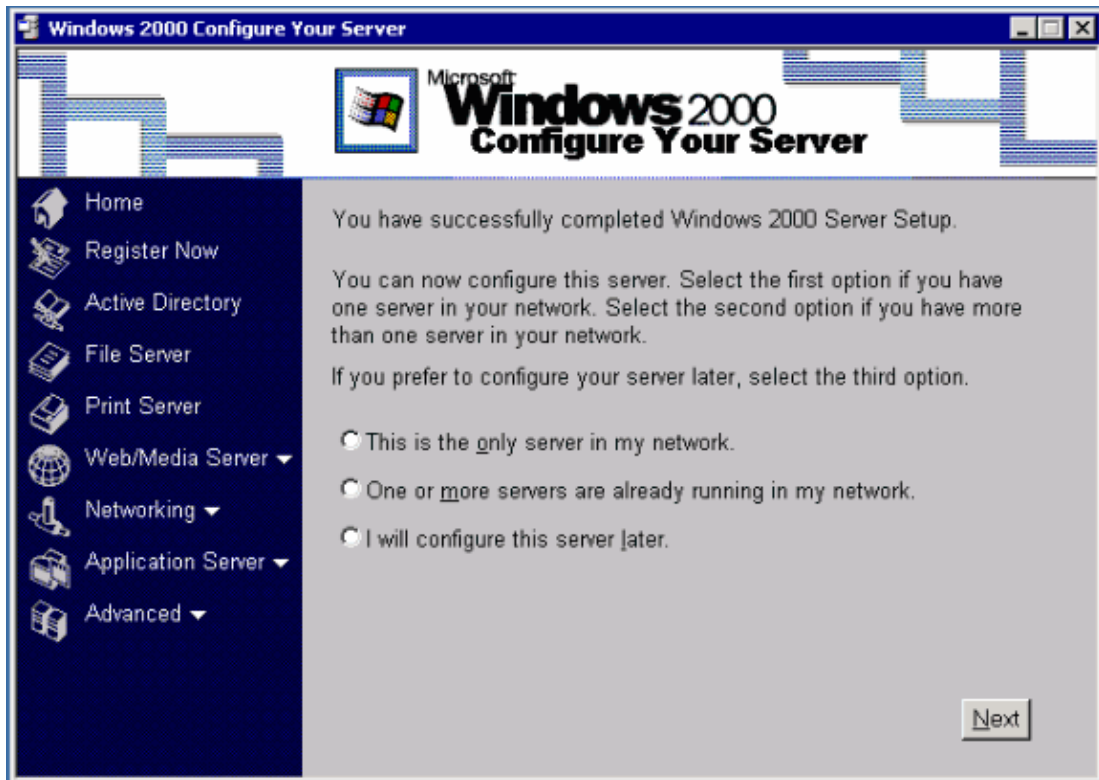


4. Select the **Configure Message Queueing Services (Configure)** option.

Follow the prompts in order to complete the installation of Message Queueing Services. There are no user configurable options for this task.

5. Select **Finish** when the installation is completed. Close all of the Windows that are currently open.
6. Log off the current session and log back on again.

The Windows 2000 Configure Your Server menu screen similar to this image appears.



7. Select the **I will configure this server later** option and select **Next**.

**Note:** If you do not see this menu screen, proceed to Task 4.

The Windows 2000 Configure Your Server menu screen similar to this image appears.





8. Un-select the **Show this screen at startup** option. Then close this window.

## Task 4: Install Additional Windows 2000 Languages (Optional)

If you want to view the Windows user interface in languages other than English, install the applicable languages.

1. Log onto Windows.
2. Based on the language(s) you want to install, insert the applicable Additional Localizations CD in the CD-ROM drive.

<b>Cisco Unity Operating System 2000 – Additional Localizations CD 1</b>	For Chinese (simplified), Chinese (traditional), Dutch, French,
<b>Cisco Unity Operating System 2000 – Additional Localizations CD 2</b>	German, Italian, Japanese, Korean, Spanish, or Swedish. For Arabic, Czech, Danish, Finnish, Greek, Hebrew, Hungarian, Norwegian, Polish, Portuguese (Brazil), Portuguese (Portugal), Russian, or Turkish.

- If the CD does not run automatically, browse to the root directory, and double-click **Muisetup.exe**.
3. Check the check boxes for the languages you want to install and click **OK**.
  4. Click **OK**.

## Task 5: Install Internet Explorer 5.5 with Service Pack 2

**Note:** The Internet Explorer 5.5 CD that is shipped with Cisco Unity includes Internet Explorer 5.5 Service

Pack 2.



**Caution:** When you install Internet Explorer, the file WScript.exe is installed automatically. Do not remove WScript.exe, or the Cisco Unity Setup program fails.

1. Insert the **Internet Explorer 5.5 CD** that came with your Cisco Unity CD set in the CD-ROM drive.

If the installation starts automatically, select **Install Internet Explorer 5.5 and Internet tools**. Then proceed to step 4.

If the installation program did not start automatically, continue with step 2.

2. Browse to the **I386** directory on the CD. It is usually under the folder named IE55.
3. Double-click **IE5Setup**.

**Note:** This might appear as IE5Setup.exe if you have enabled the option of showing file name extensions for known file types in the Windows Explorer options.

4. Select **I Accept the agreement** and click **Next**.
5. Follow the on-screen prompts to complete the installation. Select **Finish** to complete the installation and restart the server.

**Note:** There are a few final tasks that the installation routine completes the next time that you log into the server.

## Task 6: Install MSXML3 and MSXML3 Service Pack 1

Complete this procedure in order to install MSXML3 and MSXML3 Service Pack 1.

1. Insert **Cisco Unity CD 1** in the CD-ROM drive.
2. Browse to the **MsXml** directory and double-click **Msxml3sp1.exe**.
3. Follow the on-screen prompts.

## Task 7: Install Windows 2000 Server Service Pack 3

Complete this procedure in order to install the 2000 Server Service Pack 3.

1. Insert **Cisco Unity 3.1(6) Service Packs CD 1** in the CD-ROM drive.
2. Browse to the folder **Windows 2000 SP3**.
3. Double-click on the file named **ENU\_w2ksp3.exe**.
4. Follow the on-screen prompts until the installation is complete.

## Task 8: Install the MS03-007 Hot Fix

Complete this procedure in order to install IIS Hotfix MS03-007.

1. Insert **Cisco Unity 3.1(6) Service Packs CD 1** in the CD-ROM drive.
2. Browse to the root folder.
3. Double-click on the file named **Q815021\_W2K\_sp4\_x86\_EN.EXE**.
4. Follow the on-screen prompts until the installation is complete.

## Task 9: Change Windows Explorer Settings (Optional)

This procedure ensures that all system files and folders are visible in Windows Explorer. This facilitates troubleshooting system problems in the future.

1. From the Windows desktop, double-click **My Computer**.
2. Select **Tools > Folder Options**.
3. Click the **View** tab.
4. Click **Show Hidden Files and Folders**.
5. Uncheck the **Hide File Extensions for Known File Types** check box.
6. Uncheck the **Hide Protected Operating System Files** check box and click **Yes** to confirm.
7. Click **Apply**.
8. Click **Like Current Folder** and click **Yes** to confirm.
9. Click **OK**.

## Task 10: Attach the Network Cable to the Server

If you have not already connected the server to the LAN, do it now.

## Task 11: Verify IP Connectivity

You should have already configured your system with static IP configuration information as directed in Task 2, step 16. If you have not done this step yet, you can do it now and then proceed with this task. If you need assistance in configuring the TCP/IP information, refer to Appendix B: Configure the Most Common TCP/IP Parameters.

**Note:** Cisco Technical Support recommends that you do not use DHCP to assign TCP/IP parameters to your Cisco Unity server.

1. Open up a command prompt window. Enter the command:

```
C:\>ipconfig /all
```

Make a note of the IP address of a different device such as the Default Gateway or a DNS Server.

2. If you do not see the IP address of the server, its gateway, or its DNS servers, and you believe that you have configured them properly, it is possible that your network interface card (NIC) is faulty or the server has not installed the correct driver for it. Use Device Manager. In order to access the Device Manager, select **Settings > Control Panel > System > Hardware > Device Manager** to determine the status of your NIC.

If the NIC does not work properly, you must resolve the problem before you continue with any installation tasks.

3. Ping the address using the **ping ip\_address** command.

```
C:\>ping ip_address
```

4. If you do not receive a reply, try a different destination IP address if you have one.

If you are unable to receive a reply to any of the destination IP addresses, it might be because you made a mistake when you entered the IP address and mask of the server or the IP address of the default gateway. Verify this information.

If you are certain that the information is correct, the reason that you might not be receiving replies is that a network administrator has established filters that block the ICMP (ping) packets. Try using the

**tracert** command instead.

```
c:\>tracert ip_address
```

You should see a response something like this:

```
Tracing route to [x.x.x.x]
  over a maximum of 30 hops:

  1  <10ms <10ms <10ms [y.y.y.y]
```

Where y.y.y.y is the IP address of the first gateway between your server and the IP address that you used. If you used the gateway's IP address then they should be the same.

5. If you are unable to successfully **ping** or **tracert** to another device, you need to resolve this problem before you can deploy this system.

**Note:** Do not ping the IP address of the server itself. In most cases, Windows indicates that the pings were successful even if there is a cabling problem. You can prove this by connecting the LAN cable from the server and then pinging its IP address. This test proves that the TCP/IP protocol has been bound to your LAN card. It does not prove that you have connectivity to a network.

This completes the installation and configuration for Windows 2000 Server required for most Cisco Unity component system servers. The remaining tasks for installing Cisco Unity are explained in configuration documents 1–6.

Return to the Index page for this documentation set to select the appropriate configuration document.

## Task 12: Configure Internet Explorer for the First Time

The first time you start Internet Explorer you are presented with the Internet Explorer Internet Connection Wizard. This task guides you through creating a configuration that is suitable for a Cisco Unity server. In most cases the default security settings are applied. The exception is that the proxy server feature is not used.

1. Start **Internet Explorer**.
2. Select **I want to setup my internet manually** or **I want to connect through a Local Area Network (LAN)** and select **Next**.
3. Select **I connect through a Local Area Network (LAN)** and click **Next**.
4. Unselect **Automatic detection of proxy server** (recommended) and click **Next**.
5. Answer **No** when prompted to setup an email account now and click **Next**.
6. Click **Finish**.
7. Select **Tools > Internet Options**.
8. Set your home page as required and click **OK**.
9. Return to the Index page for this documentation set to select the appropriate Cisco Unity configuration document and continue with your installation.

## Appendix A: Create Bootable Installation Floppy Disks (Optional)

Complete this procedure in order to create bootable installation floppy disks.

1. Take the **Windows 2000 Server CD 1** and four blank, formatted, high-density disks to a computer that has a CD-ROM drive and is running Windows 9x or Windows 2000.
2. Insert **Windows 2000 Server CD 1** in the CD-ROM drive.

3. Browse to the **Bootdisk** directory.
4. Double-click **Makebt32.exe**.
5. Follow the on-screen prompts.
6. Go to step 1 in Task 1.

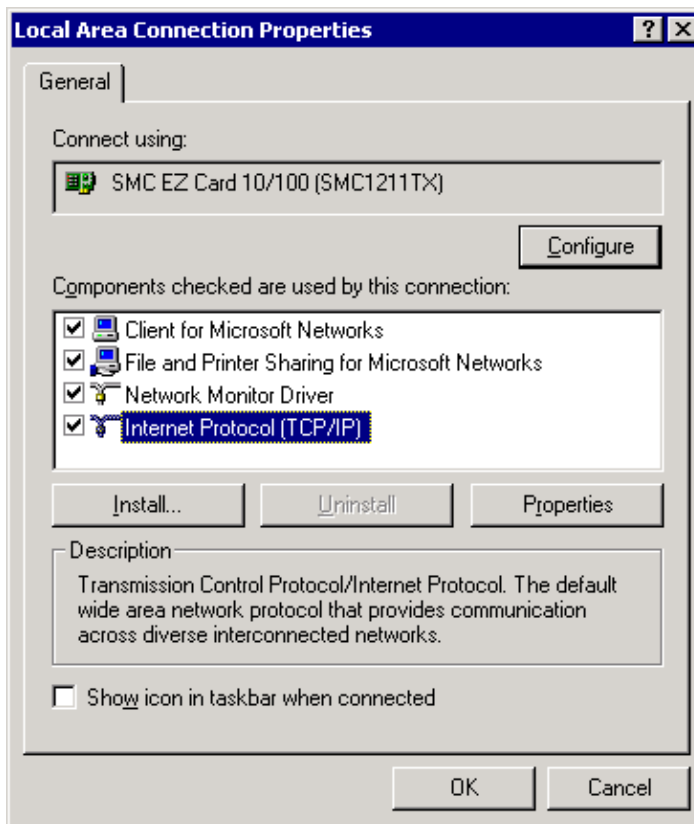
## Appendix B: Configure the Most Common TCP/IP Parameters

Complete this procedure in order to configure the most common TCP/IP parameters.

**Note:** Cisco Technical Support recommends that you do not use DHCP to assign TCP/IP parameters to your Cisco Unity server.

1. Open the TCP/IP Properties window for your NIC by selecting **Settings > Control Panel > Network and Dial-up Connections > Local Area Connection > Properties**.

A menu window similar to this image appears.



**Note:** This server has the optional Network Monitor utility installed.

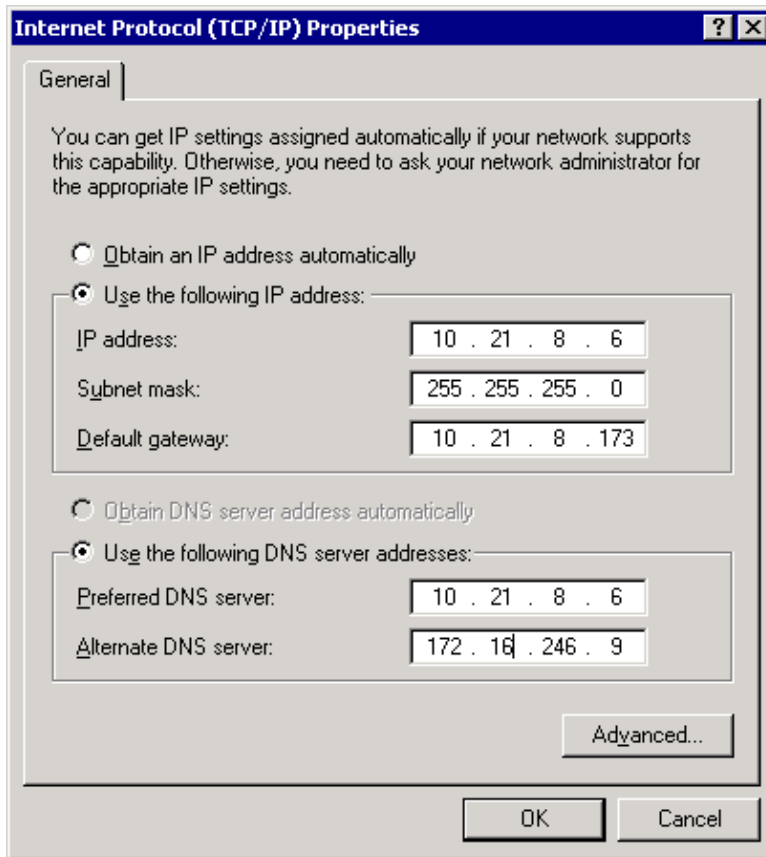
**Note:** Client for Microsoft Networks is not required.



**Caution:** If the server that you are configuring is going to run Active Directory, you must enable **File and Print Sharing For Microsoft Networks**. This is required because Active Directory uses Networking to share the Active Directory files. This applies even when the server is the only one in the entire network running Active Directory because the server accesses the files locally via the share path `\\server_name\directory_name\file_name`.

2. Double-click on the **Internet Protocol (TCP/IP)** option.

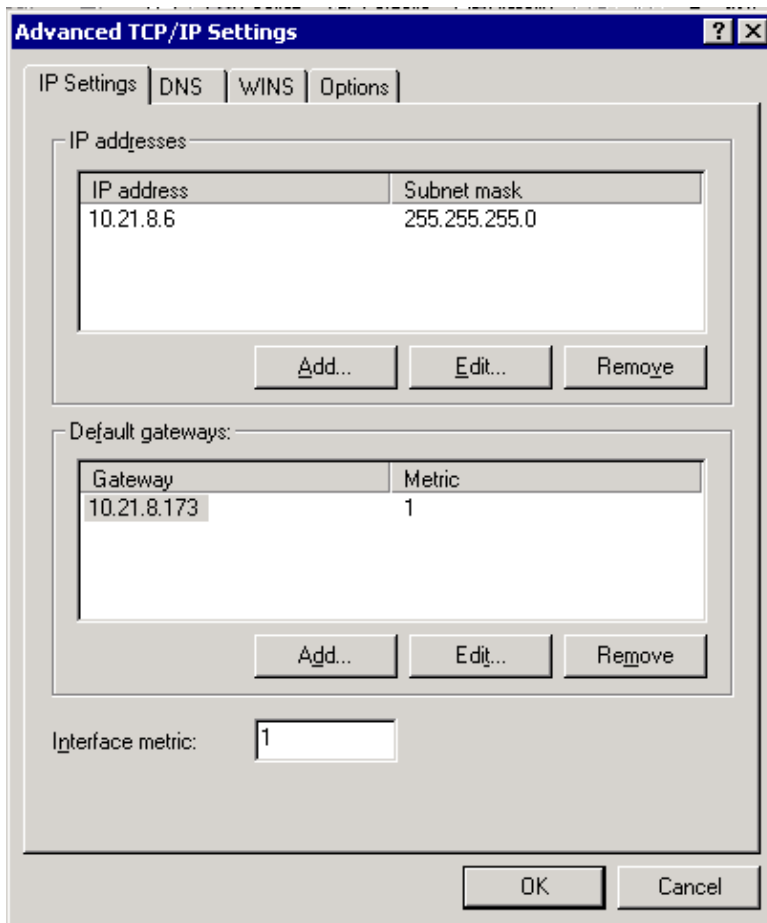
A menu window similar to this image appears.



Configure the IP options as appropriate. If you will be running Active Directory and DNS on this server, it should have itself as the first DNS Server.

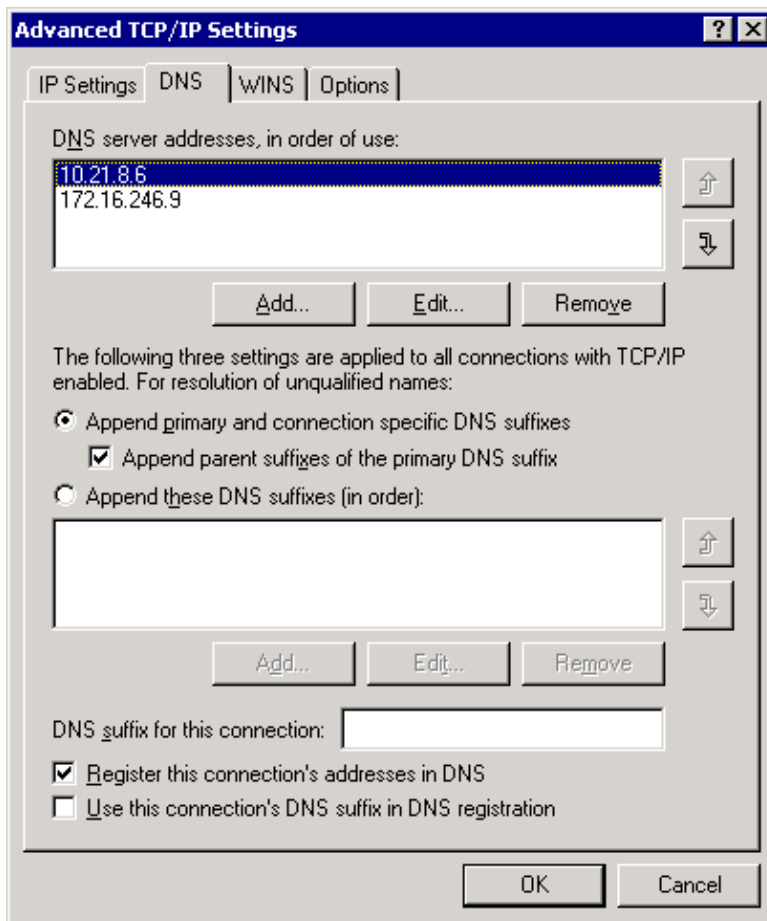
3. Select the **Advanced** option.

A menu window similar to this image appears.



4. Click the **DNS** tab.

A menu window similar to this image appears.



These settings are correct for most systems. Consult your Windows 2000 Server documentation if you need more information on the configuration of TCP/IP options.

## Appendix C: Change the Name of the Computer Name (Optional)

If you plan to change the name of your computer, do it as soon as possible. There are a few applications such as SQL that do not work properly if you change the computer's name after you have installed them.

1. Right-click on the **My Computer** icon on your desktop.
2. Select **Properties**.
3. Click the **Network Identification** tab.
4. Select **Properties**.
5. Enter only the hostname of the computer, not the Fully Qualified Domain Name. For example, marvin, not marvin.hhgttg.com.

**Note:** You should not add the computer to a domain at this time unless you know for certain that this needs to be done. Not all Cisco Unity server configurations require that the server is added to a domain. Each of the Cisco Unity configuration documents included in this documentation set explains how to determine if your server needs to be added to a domain. The configurations documents for servers that do require that a server is added to a domain contain the instruction for performing this step.

Return to the Index page for this documentation set.



# NetPro Discussion Forums – Featured Conversations

Networking Professionals Connection is a forum for networking professionals to share questions, suggestions, and information about networking solutions, products, and technologies. The featured links are some of the most recent conversations available in this technology.

NetPro Discussion Forums – Featured Conversations for Voice
Service Providers: Voice over IP
Voice & Video: Voice over IP
Voice & Video: IP Telephony
Voice & Video: IP Phone Services for End Users
Voice & Video: Unified Communications
Voice & Video: IP Phone Services for Developers
Voice & Video: General

## Related Information

- **Voice Technology Support**
- **Voice and Unified Communications Product Support**
- **Recommended Reading: Troubleshooting Cisco IP Telephony**
- **Technical Support – Cisco Systems**

---

All contents are Copyright © 2006–2007 Cisco Systems, Inc. All rights reserved. Important Notices and Privacy Statement.

---

Updated: Feb 02, 2006

Document ID: 44332

---

## Free Manuals Download Website

<http://myh66.com>

<http://usermanuals.us>

<http://www.somanuals.com>

<http://www.4manuals.cc>

<http://www.manual-lib.com>

<http://www.404manual.com>

<http://www.luxmanual.com>

<http://aubethermostatmanual.com>

Golf course search by state

<http://golfingnear.com>

Email search by domain

<http://emailbydomain.com>

Auto manuals search

<http://auto.somanuals.com>

TV manuals search

<http://tv.somanuals.com>