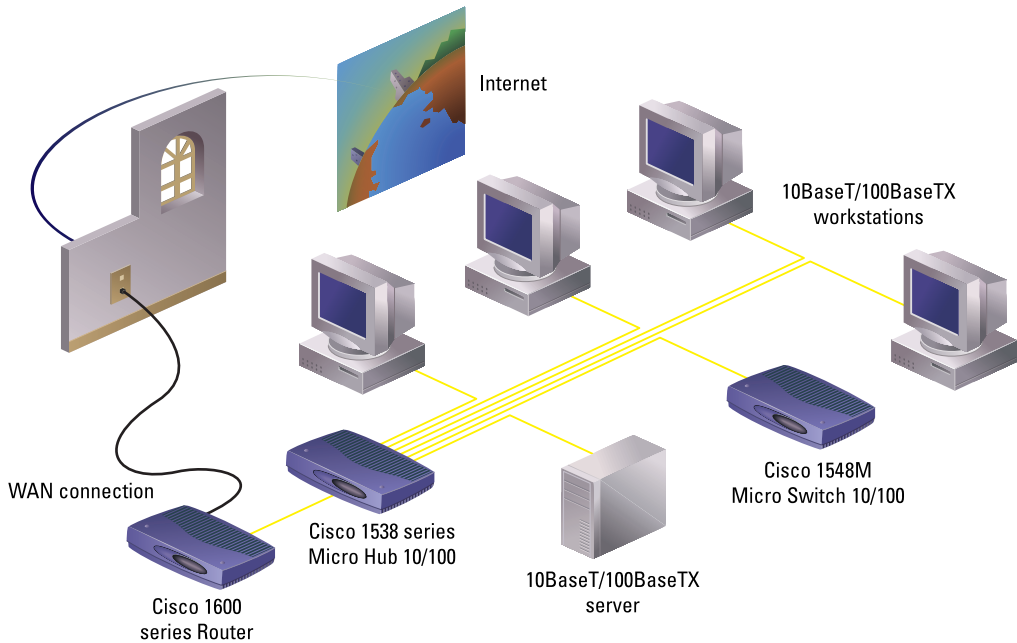


Quick Start Guide

CISCO 1538 SERIES MICRO HUB 10/100 CABLING AND START UP



1

TAKE OUT WHAT YOU NEED

2

CONNECT THE HUB TO OTHER NETWORK DEVICES

3

ASSIGN IP INFORMATION TO THE HUB

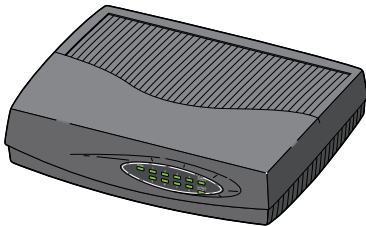
4

DISPLAY THE WEB-BASED HUB MANAGER

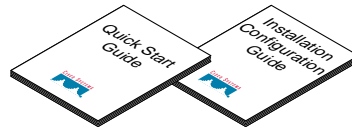


1 Take Out What You Need

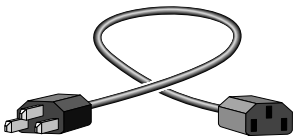
When you unpack the box that contains your Cisco 1538 Series Micro Hub, you should find the items shown below.



Cisco Micro Hub



Product documentation



Power cord



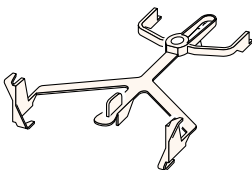
Cisco ConfigMaker Software
(Cisco 1538M only)



Stacking cable (50-pin SCSI)



Rollover console cable
(RJ-45-to-RJ-45)
(Cisco 1538M only)



Stacking clip



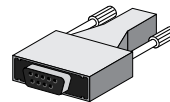
Plastic fastener



Rubber plug



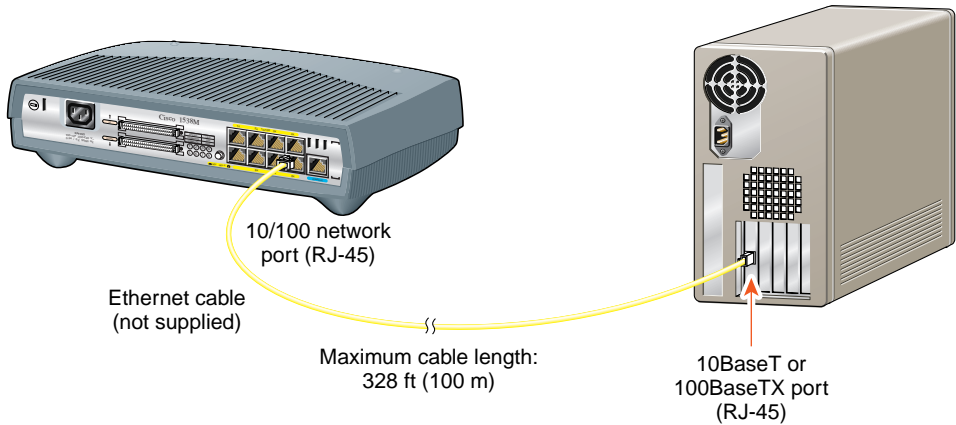
Standard slot
metal screw



Console-to-PC adapter
(RJ-45-to-DB-9)
(Cisco 1538M only)

If any item is missing or damaged, contact your Cisco representative or reseller for support.

Note: You need to supply Category 3, 4, or 5 straight-through or crossover cables to connect the hub to other Ethernet devices.



Note: Use a straight-through cable to connect two ports when one of the ports is designated with an X. Use a crossover cable to connect two ports when both ports are designated with an X.

You can change the designation of port 5 by using the MDI/MDI-X button. When the button is IN, the port is not crossed. When the button is OUT (default), the port is crossed.

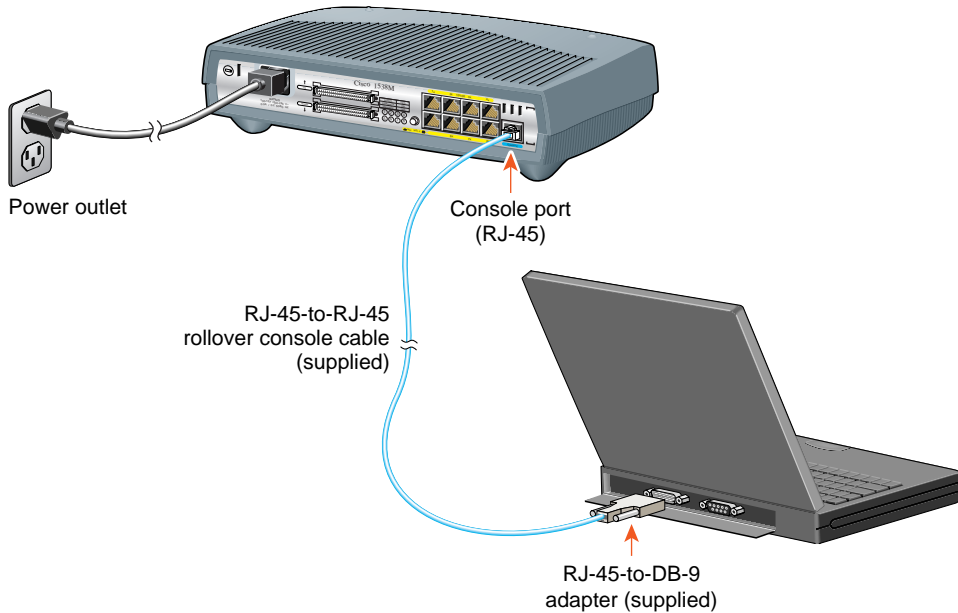
Connect the Hub to Servers, Routers, and Workstations

- Connect a Category 3, 4, or 5 **straight-through** cable to any 10/100 port on the hub and to a 10BaseT port on the workstation, server, or router.
- Connect a Category 5 **straight-through** cable to any 10/100 port on the hub and to a 100BaseTX port on the workstation, server, or router.

Connect the Hub to Switches and Other Hubs

- Connect a Category 3, 4, or 5 **crossover** cable to any 10/100 port on the hub and to a 10BaseT port on the target switch or hub.
- Connect a Category 5 **crossover** cable to any 10/100 port on the hub and to a 100BaseTX port on the target switch or hub.

2 Connect the Hub to Other Network Devices (continued)



Connect the Console Cable

- 1 Make sure console port settings of the hub match the settings of the terminal, PC, or laptop. The default settings of the hub console port are 9600 baud, 8 data bits, 1 stop bit, no parity, and no flow control.
- 2 Connect the rollover console cable to the CONSOLE port on the hub.
- 3 Connect the other end of the rollover cable to your terminal, PC, or laptop (if necessary, use an appropriate adapter, such as the supplied RJ-45-to-DB-9 adapter).
- 4 From your terminal, PC, or laptop, start the terminal emulation program.

Power Up the Hub

- 1 Connect one end of the power cord to the hub and the other end to a power source.
- 2 Wait approximately 2 minutes for the hub to complete its power-on self-test (POST).

After POST completes, the Continue with configuration dialog? prompt appears on the management station. You can then follow the prompts to assign IP information to the hub.

3 Assign IP Information to the Hub

The hub is designed to operate with little or no user intervention. In most cases, you can use it with its default settings.

Assign IP information to the hub so that you can use the Cisco 1538 Hub Manager web-based interface and so that the hub can communicate with local routers and the intranet.

Contact your system administrator for the hub IP information, and record it here.

Hub IP address: ___ . ___ . ___ . ___

Subnet mask: ___ . ___ . ___ . ___

Default gateway: ___ . ___ . ___ . ___

1 From the terminal or PC, enter **Y**:

Continue with configuration dialog? **Y**

2 Enter the IP address (for example: 10.1.105.20):

Enter IP address: 10.1.105.20

3 Enter the subnet mask (IP netmask) (for example: 255.255.255.0):

Enter IP netmask: 255.255.255.0

4 Enter the IP address of the default gateway (for example: 10.1.105.254):

Enter IP default gateway: 10.1.105.254

The following information is displayed:

```
The following configuration command
script was created:
ip address 10.1.105.20 255.255.255.0
ip default-gateway 10.1.105.254
!
end
```

5 Enter **Y**:

Use this configuration? **Y**

The following information is displayed:

```
Building configuration...
Use the enabled mode 'configuration'
command to modify this configuration.
```

Press RETURN to get started.

6 Press **Return**.

7 Exit from the terminal session.

You can now display the Cisco 1538 Hub Manager.

4

Display the Cisco 1538 Hub Manager

If you have the IP address to the hub, you can display the Cisco 1538 Hub Manager from your intranet. You can use the Cisco 1538 Hub Manager to configure and monitor the hub.

- 1 Start Netscape Communicator (4.03 or higher) or Microsoft Internet Explorer (4.01 or higher). Make sure that Java and JavaScript are enabled.
- 2 Enter the IP address of the hub in the URL field if you are using Communicator (the Address field if you are using Internet Explorer).

The Cisco 1538 Hub Manager page appears.

The screenshot shows the Cisco 1538 Hub Manager web interface. At the top, there is a navigation menu with tabs: HOME, PORT, GROUP, IP, SNMP, CDP, and SYSTEM. Below the menu is the title "Cisco 1538 Hub Manager" and a section for "Basic System Configuration" with fields for System Name, IP Address (172.31.255.255), Physical Location, User/Contact Name, Assign/Change Password, and Reconfirm Password. Below the configuration fields is a graphic of the Cisco 1538 hub with a mouse cursor pointing to one of the ports. Underneath the hub graphic is a status section for "Stack Connectors" and "Ports" with color-coded indicators for Connected, Not Connected, 100 Mbps, 10 Mbps or No Link Status, Link Up, No Link Status, and Port Partitioned. At the bottom, there is a "Telnet" link and a "Connecting to Cisco Help Resources" section with three numbered links.

Annotations on the left side of the screenshot:

- Click Apply after making changes on a page. (points to the Apply button)
- Click Revert to discard unapplied changes on a page. (points to the Revert button)
- Click Help for procedures and detailed field descriptions. (points to the Help button)
- Shows when another hub is connected to a stacking connector on the hub. (points to the status indicators)

Annotations on the right side of the screenshot:

- Click these topics to move from page to page. On Netscape Communicator only, when the cursor is above a topic, a pop-up briefly describes the options on that particular page. (points to the navigation menu)
- Click a port to display its settings, status, and statistics. (points to the hub graphic)

Copyright notice: All contents copyright © 1998 by Cisco Systems, Inc.

Footnote: 15374

Note: *The Cisco 1538 Series Micro Hub 10/100 Installation and Configuration Guide and the Cisco 1538 Hub Manager online help provide complete information about the web console and describe how to configure and monitor the hub.*

**Corporate Headquarters**

Cisco Systems, Inc.
170 West Tasman Drive
San Jose, CA 95134-1706
USA

<http://www.cisco.com>
Tel: 408 526-4000
800 553-NETS (6387)
Fax: 408 526-4100

European Headquarters

Cisco Systems Europe s.a.r.l.
Parc Evolic, Batiment L1/L2
16 Avenue du Quebec
Villebon, BP 706

91961 Courtaboeuf Cedex
France
<http://www-europe.cisco.com>
Tel: 33 1 6918 61 00
Fax: 33 1 6928 83 26

**Americas
Headquarters**

Cisco Systems, Inc.
170 West Tasman Drive
San Jose, CA 95134-1706

USA
<http://www.cisco.com>
Tel: 408 526-7660
Fax: 408 527-0883

Asia Headquarters

Nihon Cisco Systems K.K.
Fuji Building, 9th Floor
3-2-3 Marunouchi
Chiyoda-ku, Tokyo 100

Japan
<http://www.cisco.com>
Tel: 81 3 5219 6250
Fax: 81 3 5219 6001

Cisco Systems has more than 200 offices in the following countries. Addresses, phone numbers, and fax numbers are listed on the Cisco Connection Online Web site at <http://www.cisco.com>.

Argentina • Australia • Austria • Belgium • Brazil • Canada • Chile • China (PRC) • Colombia • Costa Rica • Czech Republic • Denmark
England • France • Germany • Greece • Hungary • India • Indonesia • Ireland • Israel • Italy • Japan • Korea • Luxembourg • Malaysia
Mexico • The Netherlands • New Zealand • Norway • Peru • Philippines • Poland • Portugal • Russia • Saudi Arabia • Scotland • Singapore
South Africa • Spain • Sweden • Switzerland • Taiwan, ROC • Thailand • Turkey • United Arab Emirates • United States • Venezuela

AccessPath, Any to Any, AtmDirector, the CCIE logo, CD-PAC, Centri, the Cisco Capital logo, *CiscoLink*, the Cisco Management Connection logo, the Cisco NetWorks logo, the Cisco Powered Network logo, the Cisco Press logo, the Cisco Technologies logo, ClickStart, ControlStream, DAGAZ, Fast Step, FireRunner, IGX, IOS, JumpStart, Kernel Proxy, LoopRunner, MGX, Natural Network Viewer, NetRanger, NetRanger Director, NetRanger Sensor, NetSonar, *Packet*, PIX, Point and Click Internetworking, Policy Builder, Precept, RouteStream, Secure Script, SMARTnet, SpeedRunner, Stratm, StreamView, *The Cell*, TrafficDirector, TransPath, ViewRunner, VirtualStream, VlanDirector, Workgroup Director, and Workgroup Stack are trademarks; Changing the Way We Work, Live, Play, and Learn, Empowering the Internet Generation, The Internet Economy, and The New Internet Economy are service marks; and BPX, Catalyst, Cisco, Cisco IOS, the Cisco IOS logo, Cisco Systems, the Cisco Systems logo, Enterprise/Solver, EtherChannel, FastHub, ForeSight, FragmentFree, IP/TV, IPX, LightStream, LightSwitch, MICA, Phase/IP, StrataSphere, StrataView Plus, and SwitchProbe are registered trademarks of Cisco Systems, Inc. in the U.S. and certain other countries. All other trademarks mentioned in this document are the property of their respective owners. (9811R)

Free Manuals Download Website

<http://myh66.com>

<http://usermanuals.us>

<http://www.somanuals.com>

<http://www.4manuals.cc>

<http://www.manual-lib.com>

<http://www.404manual.com>

<http://www.luxmanual.com>

<http://aubethermostatmanual.com>

Golf course search by state

<http://golfingnear.com>

Email search by domain

<http://emailbydomain.com>

Auto manuals search

<http://auto.somanuals.com>

TV manuals search

<http://tv.somanuals.com>