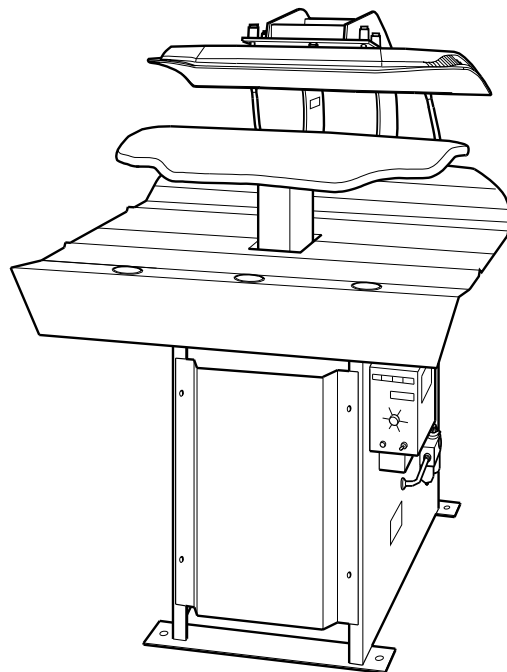


Mighty Mite and Super Laundry Presses

Refer to Page 3 for Model Numbers



SCR1529C

Keep These Instructions for Future Reference.

(If this machine changes ownership, this manual must accompany machine.)



An LSG Company
831 South First Street, P.O. Box 32270
Louisville, KY 40232-2270
Phone: (502) 587-1292
Sales Fax: (502) 585-3625
Service/Parts Fax: (502) 681-1275

www.cissellmfg.com

Part No. AJ1031
February 2005

— Installation —

Table of Contents

Model Identification	3
Safety Information	5
Explanation of Safety Messages.....	5
Important Safety Instructions	5
Introduction	7
Nameplate Location.....	7
Parts Ordering Information.....	7
Installation	9
Front View – Typical Laundry Press.....	9
Front View – Typical Laundry Collar and Cuff Press.....	10
Rear View – Typical Laundry Press.....	11
Dimensions and Specifications.....	12
Electrical Requirements.....	12
Electrical Data.....	12
Overall Dimensions and Connecting Data	13
Dimensions of Bucks Without Padding.....	15
Required Materials.....	16
Receiving Inspection	16
Location Requirements	17
Foundation Requirements.....	17
Uncrating	17
Installing Anchor Bolts and Levelling Press	17
Connecting Steam Supply and Returns	17
Connecting Air Service.....	18
Connecting Electrical Service.....	19
Final Preparation for Use.....	19
Final Check-Out Procedure	19
Mechanical and Air System Check-Outs	19
Steam Check-Out	20
Electrical Check-Out.....	20

© Copyright 2005, Alliance Laundry Systems LLC

All rights reserved. No part of the contents of this book may be reproduced or transmitted in any form or by any means without the expressed written consent of the publisher.

Model Identification


Information in this manual is applicable to the following models:


LDBB (CMMBB)
LDCC (CMMCCY)


Safety Information

Explanation of Safety Messages

Precautionary statements (“DANGER,” “WARNING,” and “CAUTION”), followed by specific instructions, are found in this manual and on machine decals. These precautions are intended for the personal safety of the operator, user, servicer, and those maintaining the machine.

	DANGER
Indicates an imminently hazardous situation that, if not avoided, will cause severe personal injury or death.	

	WARNING
WARNING indicates the presence of a hazard that can cause severe personal injury, death, or substantial property damage if the warning is ignored.	

	CAUTION
CAUTION indicates the presence of a hazard that will or can cause minor personal injury or property damage if the caution is ignored.	


Additional precautionary statements (“IMPORTANT” and “NOTE”) are followed by specific instructions.

IMPORTANT: The word “IMPORTANT” is used to inform the reader of specific procedures where minor machine damage will occur if the procedure is not followed.

NOTE: The word “NOTE” is used to communicate installation, operation, maintenance or servicing information that is important but not hazard related.

Important Safety Instructions

Save These Instructions

	WARNING
To reduce the risk of fire, electric shock, serious injury or death to persons when using your press, follow these basic precautions:	
<small>W372</small>	

1. Read all instructions before using the press.
2. Refer to the GROUNDING INSTRUCTIONS in the INSTALLATION manual for the proper grounding of the press.
3. Do not allow children to play on or around the press.
4. Do not reach into the press while the press is in operation.
5. Do not install or store the press where it will be exposed to water and/or weather.
6. Do not tamper with the controls.
7. Do not repair or replace any part of the press, or attempt any servicing unless specifically recommended in the user-maintenance instructions or in published user-repair instructions that the user understands and has the skills to carry out.
8. To reduce the risk of an electric shock or fire, DO NOT use an extension cord or an adapter to connect the press to the electrical power source.
9. Use press only for its intended purpose, finishing garments.
10. ALWAYS disconnect the press from electrical supply before attempting any service. Disconnect the power cord by grasping the plug, not the cord.
11. Install the press according to the INSTALLATION INSTRUCTIONS. All connections for steam, electrical power and grounding must comply with local codes and be made by licensed personnel when required.

Safety Information

12. Replace worn power cords and/or loose plugs.
13. Never operate the press with any guards and/or panels removed.
14. DO NOT operate the press with missing or broken parts.
15. DO NOT bypass any safety devices.
16. Failure to install, maintain, and/or operate this press according to the manufacturer's instructions may result in conditions which can produce bodily injury and/or property damage.


NOTE: The WARNINGS and IMPORTANT SAFETY INSTRUCTIONS appearing in this manual are not meant to cover all possible conditions and situations that may occur. Common sense, caution and care must be exercised when installing, maintaining, or operating the press.


Any problems or conditions not understood should be reported to the dealer, distributor, service agent or the manufacturer.


When using your press (garment finishing appliance), basic precautions should always be followed, including the following:

1. Read all instructions.
2. Use appliance only for its intended use.
3. Close supervision is necessary for any appliances being used by or near children. Do not leave appliance unattended while connected.
4. To reduce the likelihood of circuit overload, do not operate another high wattage appliance on the same circuit.

Safety signs and labels are also placed on the press. Those signs and labels are limited messages. Where needed, further explanations are provided in the manual. These signs are to be inspected for readability and replaced when missing, damaged or unreadable. Refer to Operation/Maintenance Manual for inspections process. Refer to parts manual for ordering information.

	DANGER
To avoid possible serious injury, ensure that air and steam supply systems have adequate RELIEF VALVE PROTECTION or have the pressures sufficiently limited at the sources for safe operating pressures as specified for this equipment.	
W333	

	WARNING
To AVOID possible serious injury, BEFORE performing maintenance or repair tasks:	
<ul style="list-style-type: none">• Shut off and lock out ALL electric power to the press.• Shut off and lock out ALL air service to the press.• Shut off and lock out ALL steam service to the press.• Allow heated surfaces to cool.	
W358	

	WARNING
<ul style="list-style-type: none">• Failure to install, maintain, and/or operate this machine according to the manufacturer's instructions may result in conditions which can produce serious injury, death, and/or property damage.• Do not repair or replace any part of the machine or attempt any servicing unless specifically recommended or published in the service manual and that you understand and have the skills to carry out.• Whenever ground wires are removed during servicing, these ground wires must be reconnected to ensure that the machine is properly grounded and to reduce the risk of fire, electric shock, serious injury, or death.	
W335	

Introduction

Nameplate Location

A nameplate is located at the right side of the unit and on the pressure arm. Always provide the machine's serial number and model number when ordering parts or when seeking technical assistance.

Parts Ordering Information

If literature or replacement parts are required, contact the source from which the machine was purchased or contact Cissell at (502) 587-1292 for the name and address of the nearest authorized parts distributor.

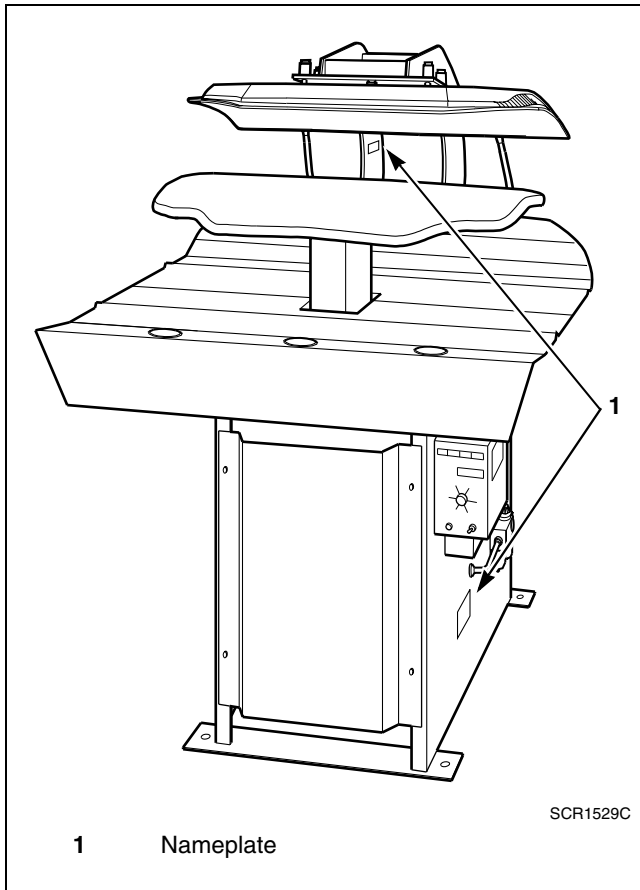
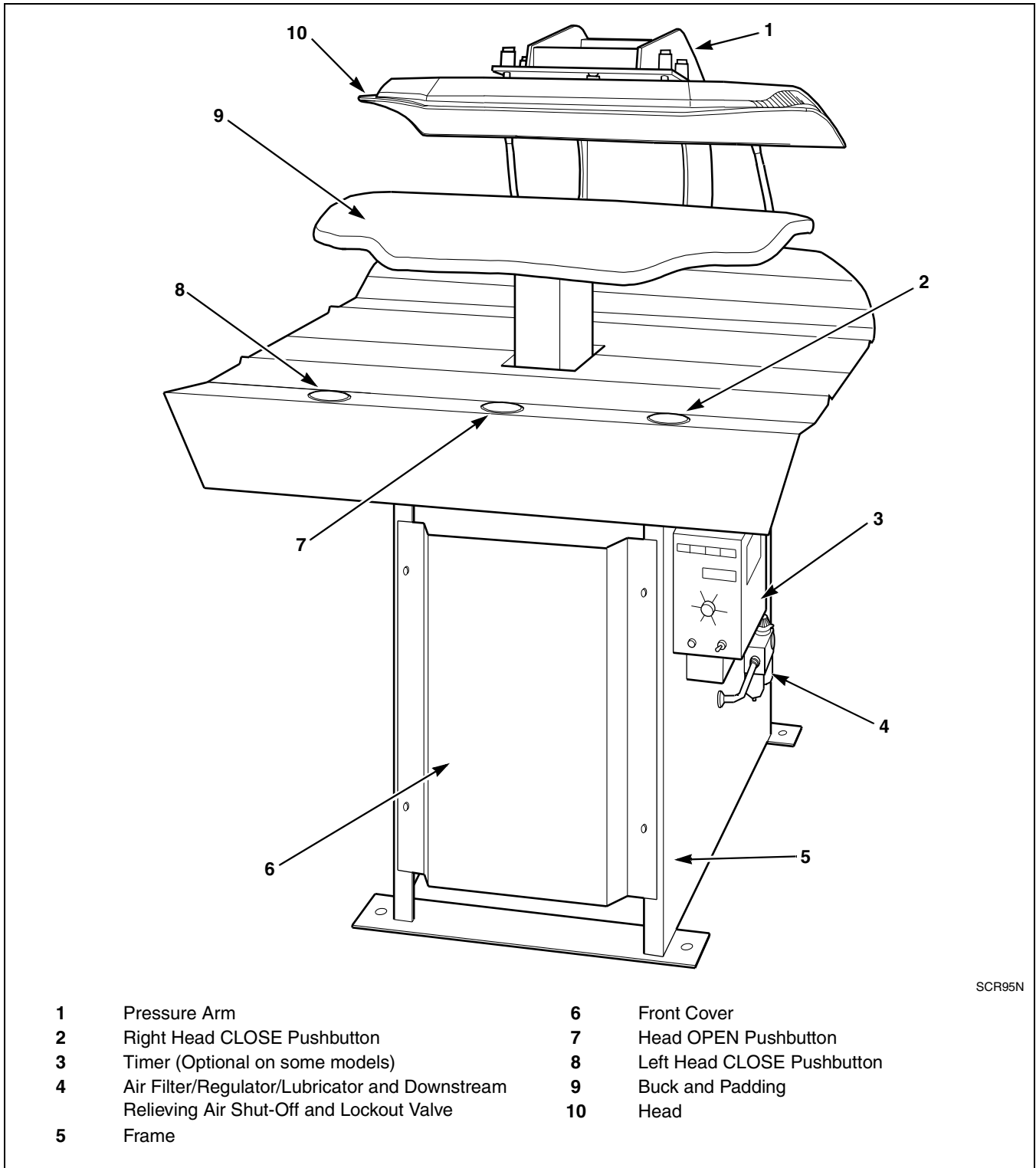


Figure 1

Installation

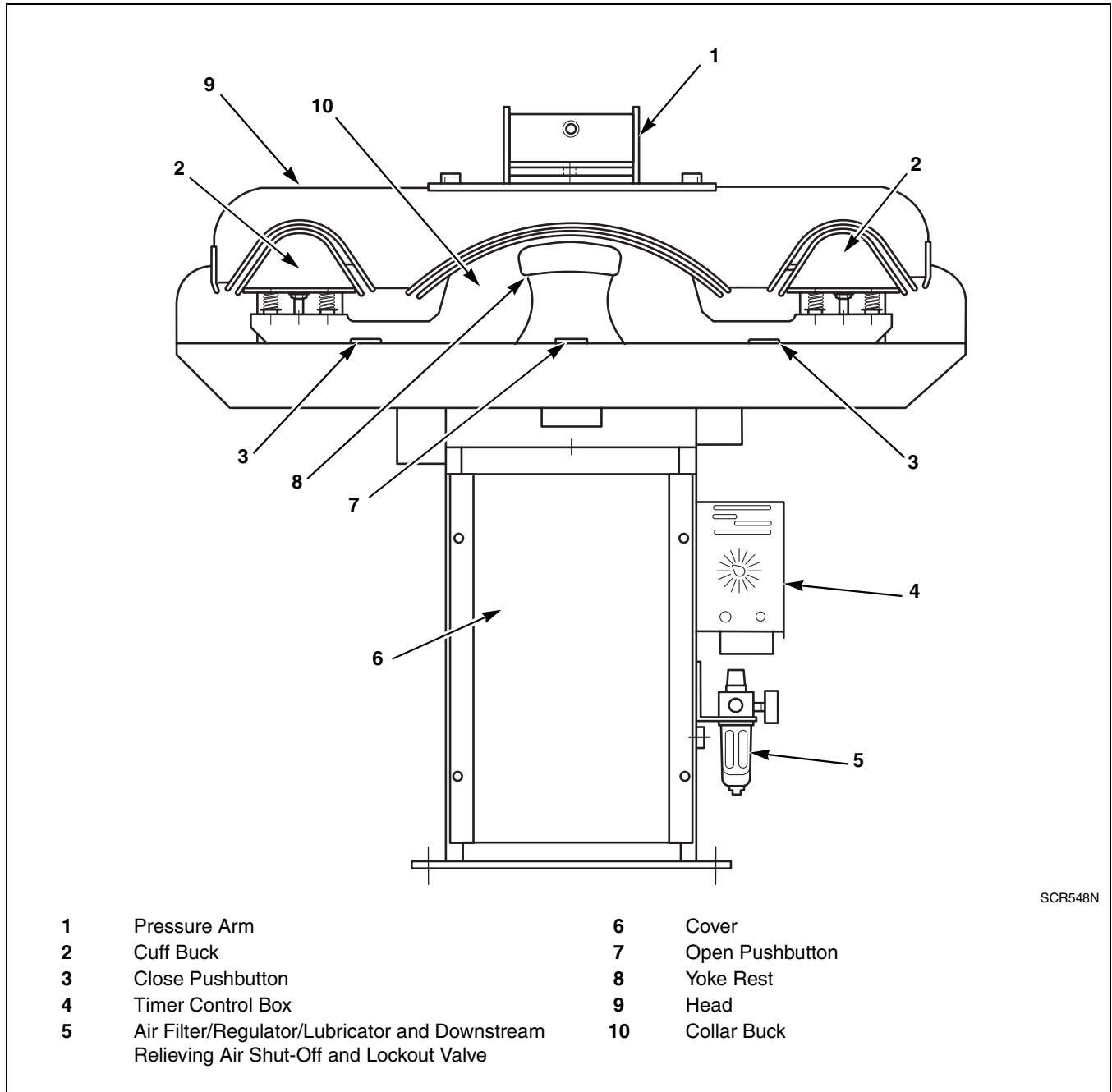
Front View – Typical Laundry Press



SCR95N

Figure 2

Front View – Typical Laundry Collar and Cuff Press



SCR548N

Figure 3

Rear View – Typical Laundry Press

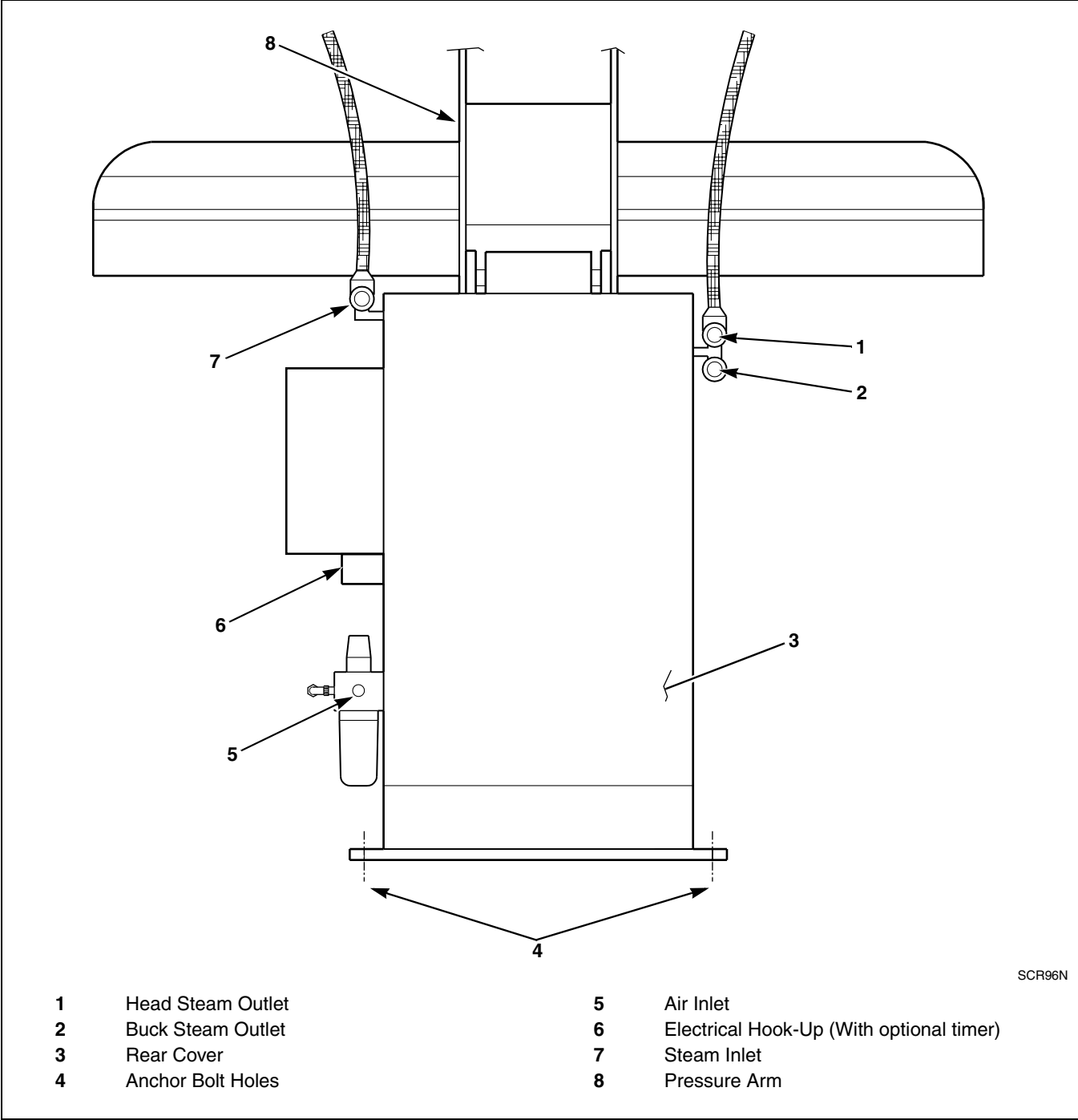


Figure 4

Dimensions and Specifications

Laundry Press	Net Weights		Supply Requirements		
Model	Weight		Air	Steam (Max. Pressure 115 psig [7.9 bar])	
	lbs.	kg	cu. ft. (cu. m) free air/cycle @ 80 psig (5.5 bar)	BHP (kw) @ 115 psig (7.9 bar)	lbs. (kg) conds/hr
LDCC	370	168	1 (.03)	.75 (7.35)	26 (12)
LDBB	370	168	1 (.03)	.75 (7.35)	26 (12)

Table 1

Electrical Requirements

(Presses With Timers Only)

NOTE: Presses without timers do not require electric hook-up.

115 Volt, 230 Volt/60 Hertz/1 Phase, (0.50, 0.25) full load amps

110 Volt, 220 Volt/50 Hertz/1 Phase, (0.50, 0.25) full load amps

Electrical Data

Nominal Voltage*	115	230	110	220
Frequency/Phase	60/1	60/1	50/1	50/1
Rated Amperes**	0.50	0.25	0.50	0.25
Average Running Amperes	0.31	0.16	0.31	0.16
Quantity Electrical Connections	2 + grd	2 + grd	2 + grd	2 + grd
* The voltages listed are rated machine voltages. The currents listed are rated for system voltage ranges of 110 – 220 and 220 – 240. ** Rated Amperes are to be used to determine incoming conductor size and short-circuit protection. Rated amperes are figured in accordance with the 1981 NATIONAL ELECTRIC CODE, Sections 430-22 and 430-24.				

Table 2

Overall Dimensions and Connecting Data

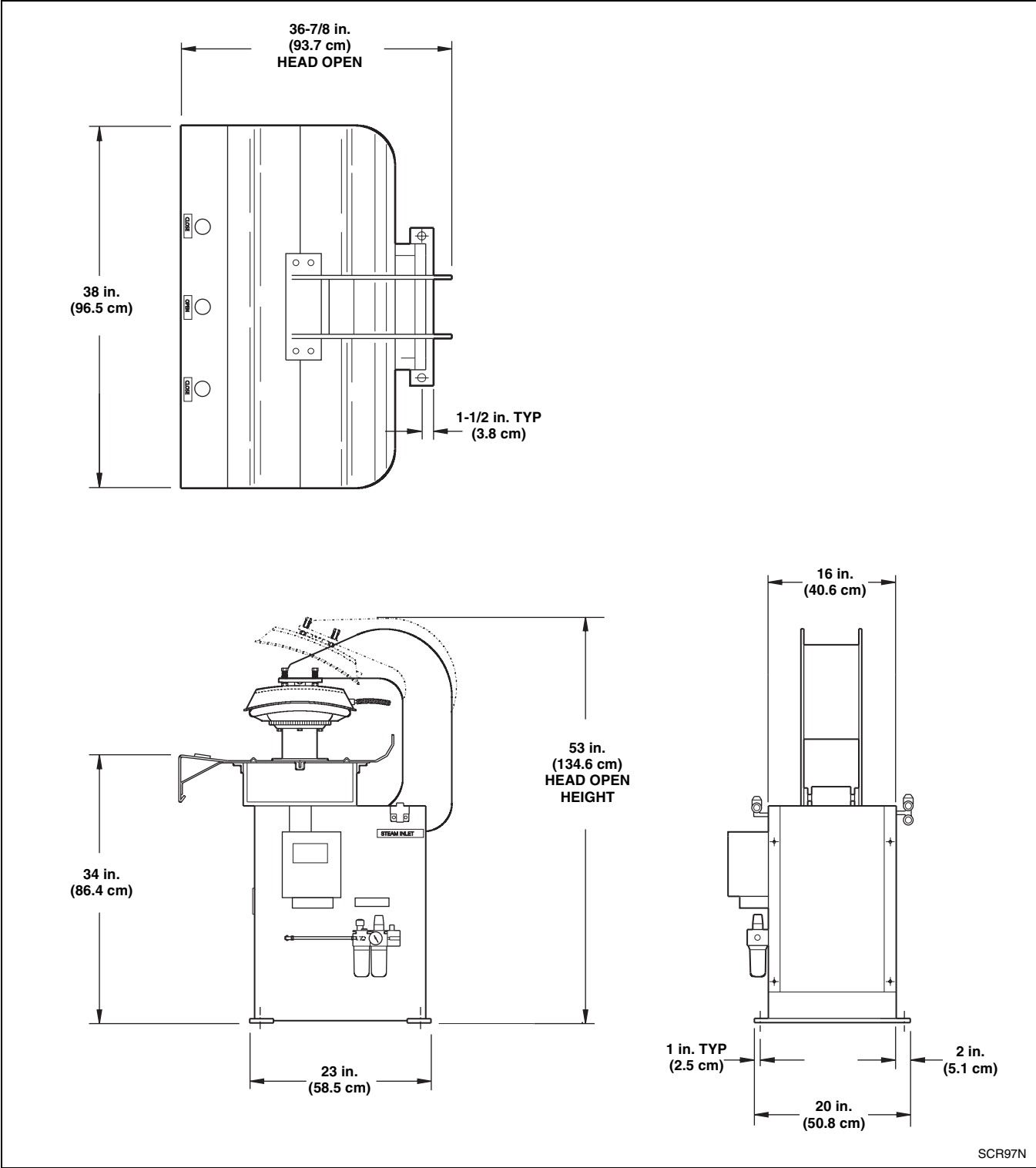


Figure 5

Installation

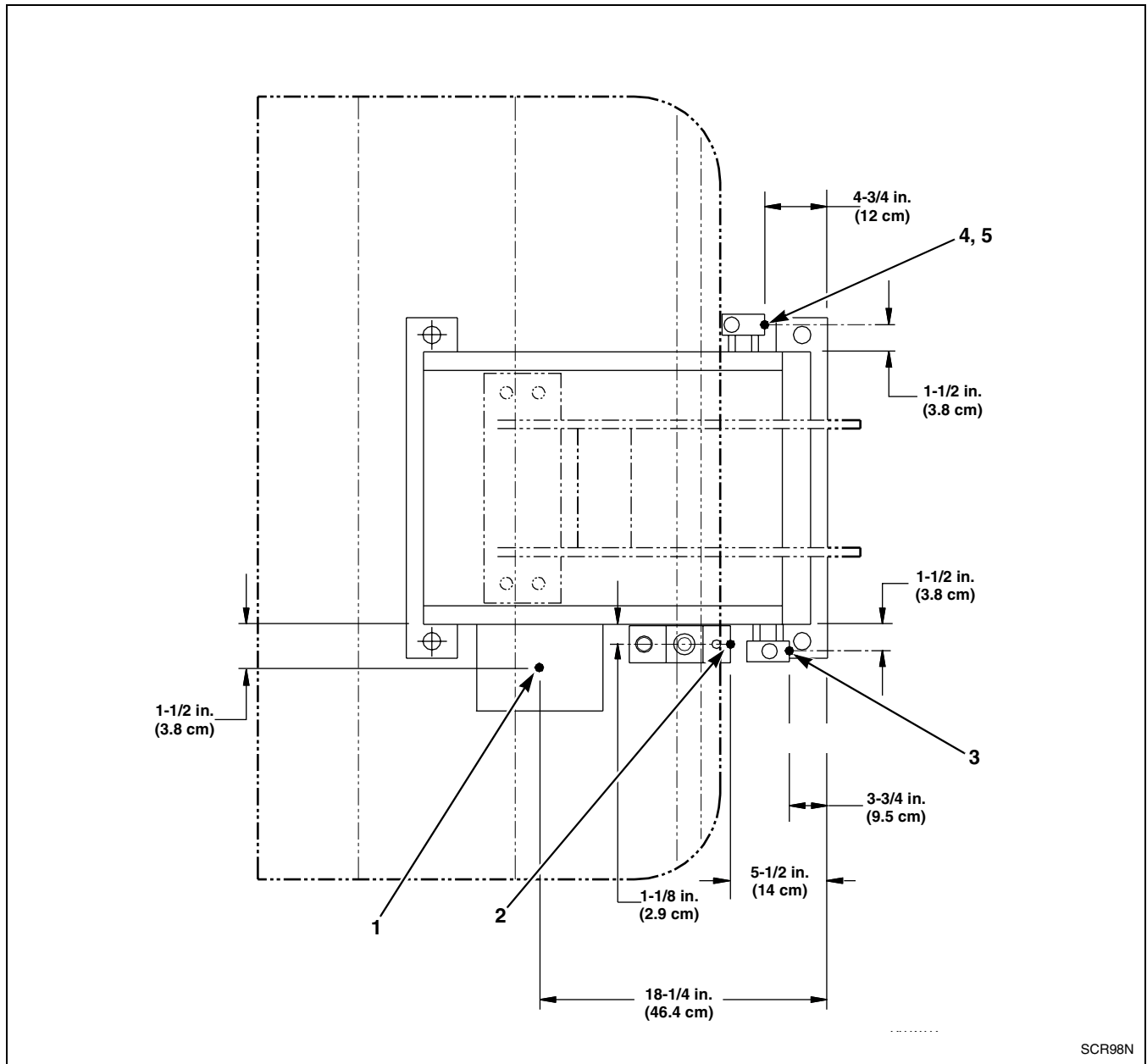


Figure 6

Item	Description	Above Flat Floor		Connection
		inches	cm	
1	Electrical Connection (for presses with timer ONLY)	12	30.5	Refer to <i>Table 2</i>
2	Air Inlet	11	28	1/4 NPT-F
3	Steam Inlet	21.63	55.0	1/2 NPT-F
4	Buck Steam Outlet	21.25	54.0	1/2 NPT-F
5	Head Steam Outlet	23.25	59.0	1/2 NPT-F

Table 3

Dimensions of Bucks Without Padding

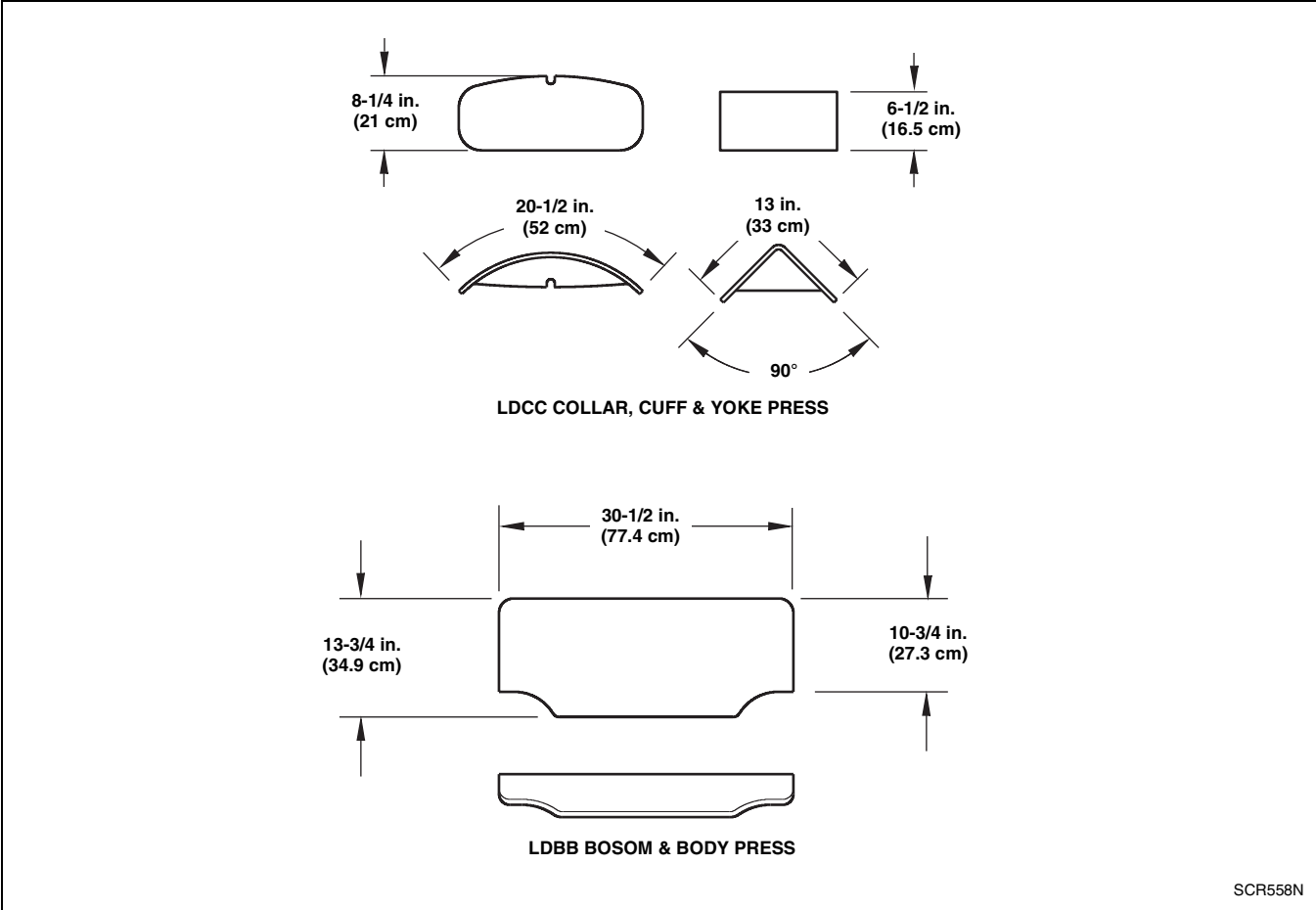


Figure 7

SCR558N

Installation

Required Materials

NOTE: Applicable codes, ordinances, specifications and/or other governing data related to installation must be complied with. The materials listed in Table 4 MAY or MAY NOT conform to these requirements.

Quantity	Description	Source
1	Models with timer ONLY. Lockout type fused disconnect switch suitable for electric service connected to press (refer to wiring schematic in control box). Not required if circuit breaker is used.	Local
As required	Models with timer ONLY. Wire of suitable size, type and length to connect electric service to press (refer to wiring schematic in control box).	Local
As required	Models with timer ONLY. Flexible conduit and connections to encase wires and make connections (refer to wiring schematic in control box).	Local
2	Steam trap and check valve, or combination steam trap/check valve sized for buck and head steam return lines and steam consumption.	Local
3	Ball shut-off valves sized for steam supply and return lines.	Local
1	Ball shut-off valve sized for air supply line.	Local
4	Anchor bolts.	Local
As required	Pipe, couplings, unions, flanges, etc., to connect steam supply and return lines and air supply line to press. Wall thickness of pipe and tubing must be in compliance with recommendations by compressor and boiler manufacturers and local code (refer to sections on <i>Connecting Steam Supply and Returns</i> and <i>Connecting Air Supply</i>).	Local

Table 4

Receiving Inspection

Press is shipped assembled and enclosed in a wood slat crate. Upon delivery, inspect crate and contents for shipping damage. If crate or cover is damaged, or signs of possible damage are evident, have carrier note condition on shipping papers BEFORE shipping receipt is signed, or advise carrier of condition when discovered.

Remove protective cover and check items received against items listed on packing list. If any item is damaged or missing, a written claim should be filed with carrier as soon as possible.

Location Requirements

NOTE: If a forklift is used to move press, exercise care that forklift arms are inserted under frame and DO NOT CONTACT ANY OPERATING MECHANISM.

Moving press to installation location while still attached to skid is recommended. However, press can be removed from skid before moving.

Removing Press from Skid

Unscrew four shipping screws from attaching holes. Using a forklift, lift press and remove skid.

Press should be located in an area that provides a minimum of 24 inches (61 cm) between press and any structure.

NOTE: Above dimensions are considered MINIMUM working and maintenance dimensions and SHOULD BE INCREASED if possible.

Space between front of table and closest structure should be determined by work requirements, but in no case should be less than 30 inches (76.2 cm).


Foundation Requirements

Install press on a solid, level floor such as concrete.

NOTE: Installation on a wooden floor can cause machine to shift, which WILL result in MISALIGNMENT of heads and bucks and DAMAGE to both press and garments.

Floor should be capable of supporting 125 pounds per square foot (56.7 kg). Remove all floor covering material (tile, wood, carpeting, etc.) from press mounting area.

Uncrating

	WARNING
<p>To avoid possible serious injury:</p> <ul style="list-style-type: none"> • ALWAYS be careful to AVOID spring-loaded components when working inside press. • Installation MUST be performed ONLY by qualified service personnel. 	
<small>W336</small>	

Remove front cover from press and use a hammer to knock out shipping brace.

Installing Anchor Bolts and Levelling Press

After press is in position, attach and level it to floor with four anchor bolts (obtain locally). Using the frame base anchor bolt holes as a template, drill four holes in floor. Holes must be drilled deep enough to properly install bolts in accordance with manufacturer's instructions. Securely tighten anchor bolts.

Ensure press is level front and back, as well as left and right. Place a spirit level on top of frame. If press is not level, raise and lower corners as required. Place sufficient shims between press frame and floor. Shims should be sized to make maximum contact with floor and frame to distribute weight evenly. Use industrial grout if necessary.

NOTE: Prior to bolting to floor, shim press frame to eliminate rocking.

Connecting Steam Supply and Returns

(Refer to *Figure 8*)

NOTE: Clean out ALL pipe lines BEFORE connecting them to press. Failure to properly install suitable traps and check valves AND supply correct steam pressure WILL REDUCE operating efficiency.

Steam supply connected to press must have a constant pressure of 115 psig (7.9 bar).

The following steps outline the procedure for connecting steam supply and return lines to press:

1. Run a 1/2 NPT steam supply to steam supply connection with suitable black iron pipe, elbows, strainer, ball valve and union.

NOTE: A MINIMUM 3 inch (7.62 cm) riser should be installed off supply header to minimize water in steam supply to press.

NOTE: It is recommended that a steam strainer be installed between steam supply and press.

2. Install two suitable 1/2 NPT unions, steam traps, check valves and one ball valve between steam return connections and steam return lines.

NOTE: Cast iron inverted bucket traps are recommended. Size traps according to steam pressure and consumption found in Specifications in Table 1.

Installation

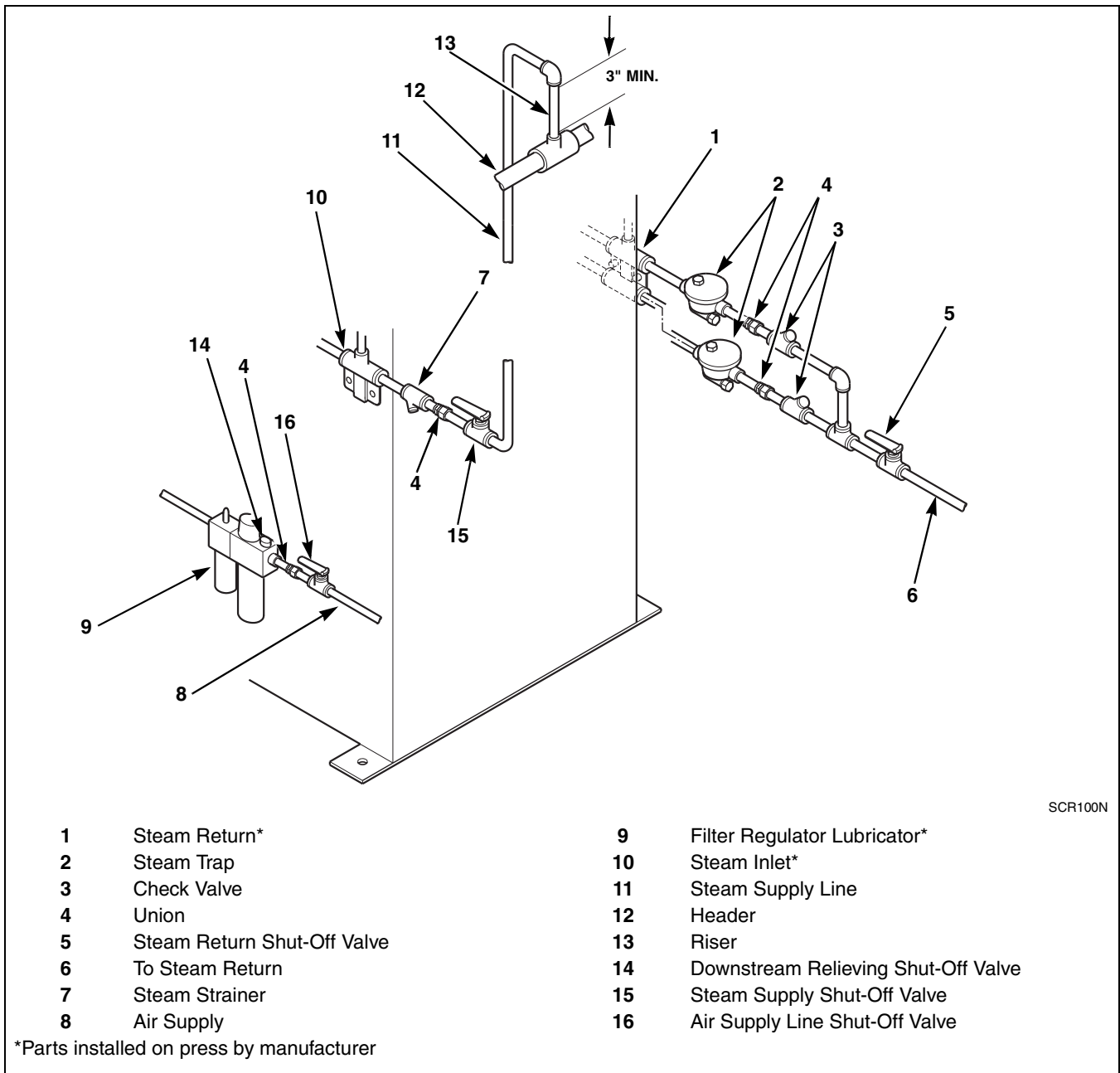
Connecting Air Service

(Refer to *Figure 8*)

Air service connected to press must have a MINIMUM constant pressure of 80 psig (5.52 bar) and be of ample volume to meet requirements listed in data table (refer to *Table 1*). Air pressure should be reduced to 75 to 80 psig (5.17 to 5.52 bar) at air inlet regulator. It is customer's responsibility to connect air line with galvanized pipe, brass, aluminum or stainless steel pipe, copper tubing, fittings, shut-off valve, union, air filter and air dryer suitable for delivery of clean, dry air to inlet.

NOTE: Failure to provide clean, dry air to press WILL cause premature valve FAILURE and UNNECESSARY DOWNTIME.

A shut-off valve and union placed at each unit is recommended.



SCR100N

Figure 8

Connecting Electrical Service

(Presses With Timers Only)

The following steps outline the procedure for connecting electric service:


1. Install a suitably sized fused disconnect switch or circuit breaker as close to press as practical.
2. Remove one knockout plug from electrical connection box.
3. Connect proper size conduit encased wires to wires inside box.
4. Connect conduit to box.

NOTE: Refer to wiring schematic enclosed in control panel.

Final Preparation for Use

NOTE: Press passed a thorough inspection before it was shipped; however, due to vibration encountered during shipment, some cap screws, nuts, screws or fittings may have loosened.

After press is installed, all covers and guards should be removed and the following performed:

	WARNING
<p>To avoid possible serious injury, BEFORE making final check-out:</p> <ul style="list-style-type: none"> • ALWAYS shut off services to press BEFORE removing guards and covers to do ANY maintenance, service, setup, adjustments or repair tasks. • Shut off AND lock out ALL electric power to press. • Shut off AND lock out ALL air service to press. • Shut off AND lock out ALL steam service to press. • Let heated surfaces cool. 	
<small>W337</small>	

- Check all bolts, nuts, screws, tru-arc rings, terminals and fittings for security and tighten as required.
- Check oil level in air line oiler. It should be 3/4 full (approximately 1/2 inch [12.7 mm] from top).
- Check air tubing. It should be clear of steam lines and moving parts.
- Check that foot pedals can be fully depressed (no carpet, rubber pads, etc., under pedals to restrict movement).

Final Check-Out Procedure

The following paragraphs outline check-out procedures for properly operating mechanical, air, electrical and steam systems.

FAILURE to perform requested checks and make corrective actions as required could result in damage to the press.

NOTE: Refer to Operation/Maintenance Manual to identify controls before performing the following check-outs.

Mechanical and Air System Check-Outs

1. Open air supply shut-off valves.
2. Simultaneously push and hold both CLOSE pushbuttons until head is against buck. Head should continue downward until padding is squeezed. Pressing pressure is now applied.
3. Push OPEN button. Head return springs should pull head open.
4. Simultaneously push both CLOSE buttons. As head travels downward, release left button. Head should return open.
5. Simultaneously push both CLOSE buttons. As head travels downward, release right button. Head should return open.
6. Simultaneously push both CLOSE buttons. Have a second person press the OPEN button as you continue pressing the CLOSE buttons. Head should return open.
7. If buttons do NOT perform as described above, DO NOT operate the press. Call a qualified service technician.

Installation

Steam Check-Out

Slowly open shut-off valves in steam SUPPLY and RETURN lines to prevent water hammer in steam pipes.

1. Check all steam lines for leaks.
2. Allow press to heat for 15 minutes.
3. Check head surface temperature with a pyrometer or temperature stick measuring device. Temperature should be 300°F to 340°F (150°C to 172°C).

Electrical Check-Out

(Presses With Timers Only)

Close electrical disconnect switch or circuit breakers.

1. Place timer switch to ON position.
2. Set timer for 25 seconds.
3. Close press head.
4. Head closes against buck for approximately 25 seconds, then opens automatically.

Free Manuals Download Website

<http://myh66.com>

<http://usermanuals.us>

<http://www.somanuals.com>

<http://www.4manuals.cc>

<http://www.manual-lib.com>

<http://www.404manual.com>

<http://www.luxmanual.com>

<http://aubethermostatmanual.com>

Golf course search by state

<http://golfingnear.com>

Email search by domain

<http://emailbydomain.com>

Auto manuals search

<http://auto.somanuals.com>

TV manuals search

<http://tv.somanuals.com>