

# HEALTH CARE PRODUCTS



Digital Blood Pressure Monitors

Digital Thermometers

Ultrasonic Nebulizer

Digital pedometer

Body Fat Analyzer

# Leading Technology for Humanity

Determined to develop as a corporation that offers new value for everyone everywhere through high-quality products and services . . . . . Citizen Systems is reinventing itself.

“Leading Technology for Humanity”

— Our corporate slogan expresses the aspirations of every Citizen Systems employee, each of whom is striving to realize a shared ideal.  
 We have superior miniaturization and refinement technologies cultivated by members of the Citizen Group.  
 We have a desire to design products that are easy for anyone to use.  
 And we have the skills required to pursue quality at every turn, combined with an unswerving commitment to manufacturing.  
 We draw on these strengths to manufacture more advanced products for a wide range of fields, including health information management, information/entertainment and business information equipment.  
 Our aim is to achieve advances in convenience, enabling people to lead more abundant and comfortable lives anytime and anywhere  
 — and to disseminate people-friendly technologies and services that help individuals lead healthier, more fulfilling lives.

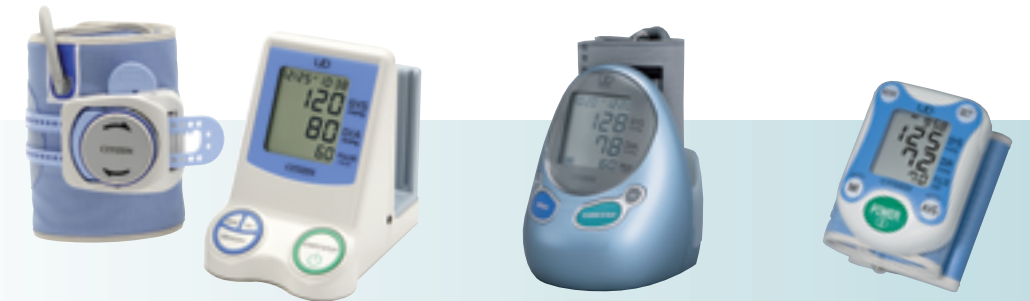
“Leading Technology for Humanity”

— We continue to take up new challenges with an eye on our customers and with these words in mind.

CITIZEN SYSTEMS JAPAN CO., LTD.



UD(UNIVERSAL DESIGN) is:  
 The design of products and environments to be usable by all people, to the greatest extent possible, without the need for adaptation or specialized design.  
 CITIZEN Health Care Products have been developed with the Universal Design concept in mind.



Digital Blood Pressure Monitors P3



Digital Thermometers P15



Ultrasonic Nebulizer P19



Digital Pedometer P20



Body Fat Analyzer P20



Model Index P21

## CITIZEN Micro HumanTech

Citizen Keyword of 21st Century Micro HumanTech

### Micro

#### Citizen Technical Domain

The precision and miniaturization technology that Citizen has developed in a long time; we use these technologies as nuclei, and always stick to the bases of production to make a contribution to the information revolution of 21st century in the field of precision and miniaturization.

### Human

#### Citizen Technological Philosophy

We provide products and develop technologies to communicate with people; the last consumer, and their healthy and hearty life, and to enable our life live together with the earth. We return to our establish basics known as customer principles in which our hope is to make a contribution to people's life in every where in the world by making products that is familiar and loved by citizens.

### Tech

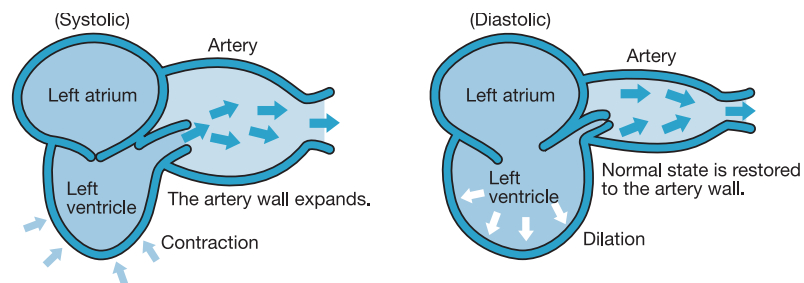
#### Citizen Technological Method

The professionalism in production that supports the reliance of Citizen. We make a fusion for all technologies such as the precision processing technology, the measurement technology, energy saving technology and the production technology with beautiful and simple designs to create products that is reliable and fascinating. We have a strong belief that the technology fused with sense and knowledge will make people happy.

# Digital Blood Pressure Monitors

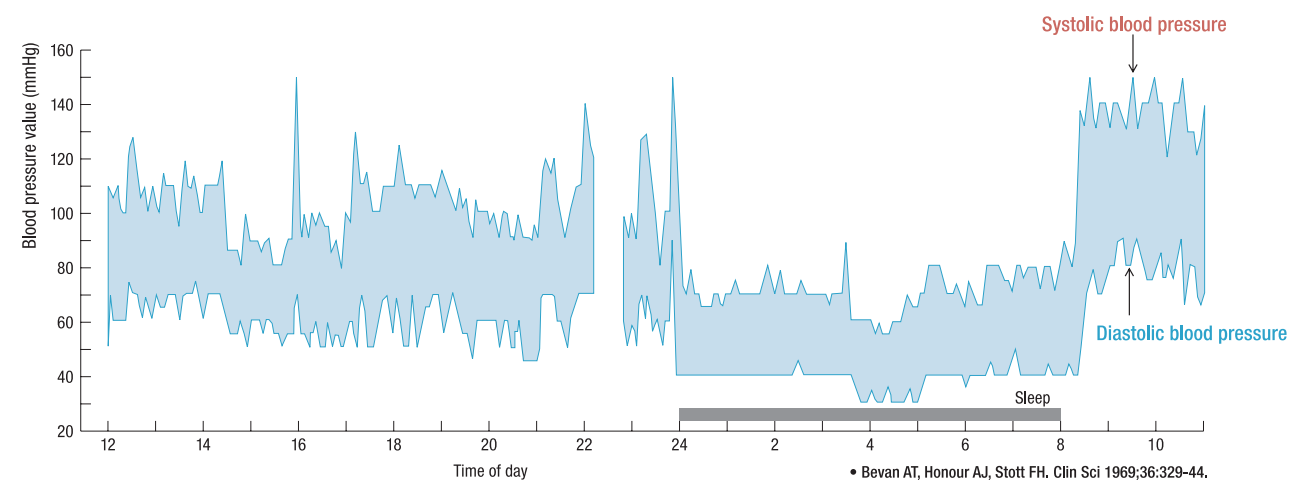
## What is blood pressure?

The heart is a pump that circulates blood throughout your body. Blood is pumped from the heart at a constant pressure into arteries. This pressure is called the arterial blood pressure and represents, in general terms, your blood pressure. Blood pressure is indicated by several kinds of pressures, including the systolic pressure that occurs when the heart pumps blood and the diastolic pressure that occurs when blood returns to the heart.

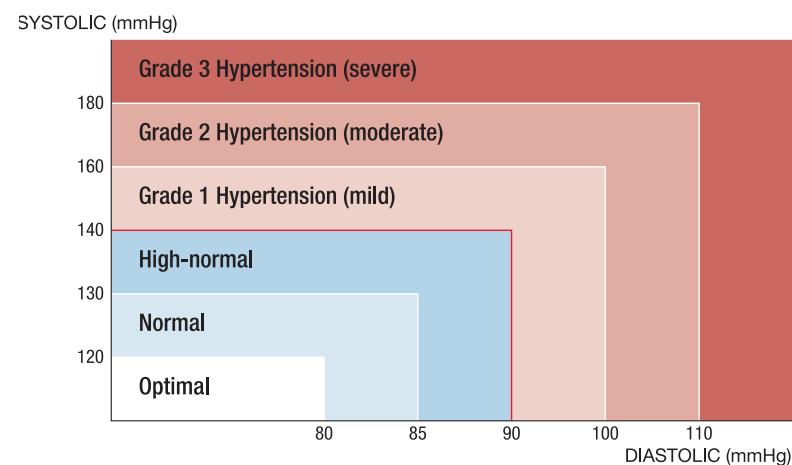


## Your blood pressure changes all the time.

Your blood pressure differs according to your age, gender and a range of other factors. It is likely to be affected by your biorhythm during the day and by your posture, physical activities, mental activities, level of stress and even by the air temperature. The blood pressure of a healthy person generally varies within a day.



## Blood pressure classifications



The figure left shows the blood pressure classifications under the WHO standards. (Taking measurements while sitting in the hospital)

## Upper Arm / Full Automatic



**CH-463E**  
Cuff to go easy and accurate  
Full automatic Blood Pressure Monitor



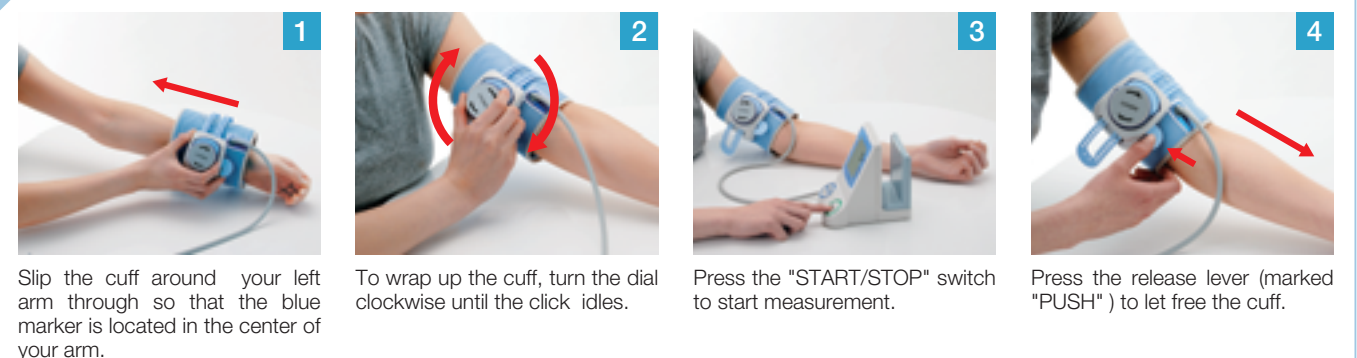
- 60 memories function
- Cuff to go easy and accurate
- Easy-to-read LCD display
- Easy to store integrated cuff holder
- Large buttons for easy operation
- Automatic power off function
- Simultaneous blood pressure and pulse reading
- AC adapter is optional (AC-230CZ)

### SPECIFICATIONS

Measurement System: Oscillometric method  
Measurement range: Pressure: 0 ~ 280 mmHg  
Pulse: 40 ~ 180 pulse/min  
Accuracy: Pressure:  $\pm 3$  mmHg,  
Pulse:  $\pm 5$  %  
Power source: AA size  $\times 4$   
Optional AC/DC adapter( 6VDC, 1A )  
Battery life: Manganese battery: Approx. 150 times  
Alkaline battery: Approx. 500 times  
Rated voltage: DC6V  $\approx$  3W (  $\approx$  : Direct Current )  
Outside dimensions: 112mm( W ) $\times$  148mm( D ) $\times$  152mm( H )  
Weight: Unit: Approx. 520g( without batteries )  
Cuff: Approx. 250g



## How to operate





**CH-462E**  
One touch operation, full automatic  
Blood Pressure Monitor



- 60 memories function
- Easy-to-read LCD display
- Easy to store integrated cuff holder
- Large buttons for easy operation
- Automatic power off function
- Simultaneous blood pressure and pulse reading
- AC adapter is optional (AC-230CZ)

**SPECIFICATIONS**

Measurement System: Oscillometric method  
 Measurement range: Pressure: 0 ~ 280 mmHg  
 Pulse: 40 ~ 180 pulse/min  
 Accuracy: Pressure: ±3 mmHg,  
 Pulse: ±5 %  
 Power source: AA size × 4  
 Optional AC/DC adapter( 6VDC, 0.6A )  
 Battery life: Manganese battery: Approx. 150 times  
 Alkaline battery: Approx. 500 times  
 Rated voltage: DC6V :::: 3W( :::: : Direct Current )  
 Outside dimensions: 112mm( W )× 148mm( D )× 152mm( H )  
 Weight: Unit: Approx. 520g( without batteries )  
 Cuff: Approx. 140g



**ACCUTUBE**  
Applicable only to CH-461C & CH-462E



**SPECIFICATIONS**

Measurement Localization: Upper Arm  
 Arm Circumference range: 20 ~ 32cm  
 Weight: Approx. 250g  
 Adaption: CH-462E, CH-461C



**Adaption**



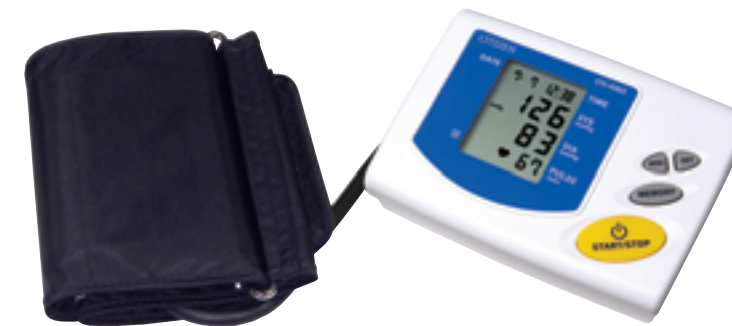
**CH-461C**  
One touch operation, full automatic  
Blood Pressure Monitor



- 7 memories function
- Easy-to-read LCD display
- Large buttons for easy operation
- Automatic power off function
- Simultaneous blood pressure and pulse reading
- AC adapter is optional (AC-230CZ)

**SPECIFICATIONS**

Measurement System: Oscillometric method  
 Measurement range: Pressure: 0 ~ 280 mmHg  
 Pulse: 40 ~ 180 pulse/min  
 Accuracy: Pressure: ±3 mmHg,  
 Pulse: ±5 %  
 Power source: AA size × 4  
 Optional AC/DC adapter( 6VDC, 0.6A )  
 Battery life: Manganese battery: Approx. 200 times  
 Alkaline battery: Approx. 700 times  
 Rated voltage: DC6V :::: 3W( :::: : Direct Current )  
 Outside dimensions: 112mm( W )× 76mm( H )× 145mm( D )  
 Weight: Unit: Approx. 340g( without batteries )  
 Cuff: Approx. 140g



**CH-406D**  
One touch operation Blood Pressure  
Monitor with Time & Date



- 48 memories function
- Simultaneous blood pressure and pulse reading
- Easy-to-read LCD display
- Automatic power off function
- AC adapter is optional (AC-406EU/US)

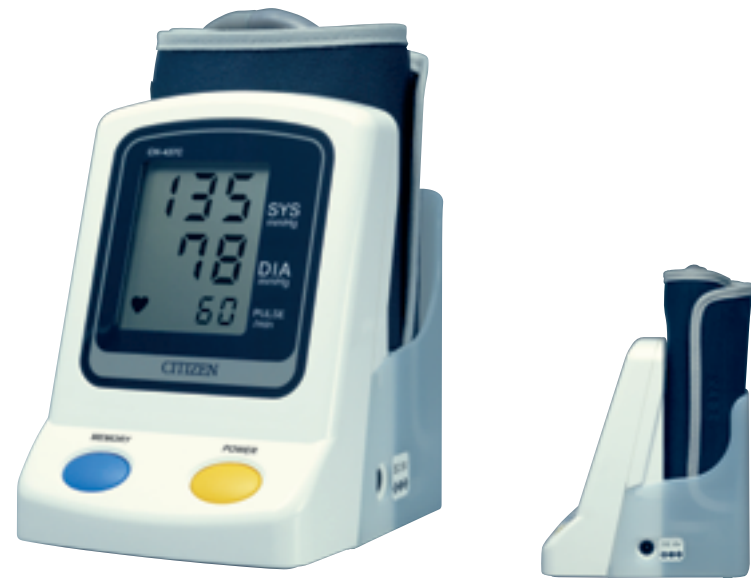
**SPECIFICATIONS**

Measurement System: Oscillometric method  
 Measurement range: Pressure: 0 ~ 280 mmHg  
 Pulse: 40 ~ 199 pulse/min  
 Accuracy: Pressure: ±3 mmHg,  
 Pulse: ±5 %  
 Power source: AA size × 4  
 Optional AC/DC adapter( 6VDC, 1A )  
 Battery life: Alkaline battery: Approx. 250 times  
 Rated voltage: DC6V :::: 6W( :::: : Direct Current )  
 Outside dimensions: 145mm( W )× 68.8mm( H )× 105mm( D )  
 Weight: Unit: Approx. 300g( without batteries )  
 Cuff: Approx. 140g



Function mark explanation





### CH-437C

One touch operation, full automatic  
Blood Pressure Monitor



- 7 memories function
- Easy-to-read LCD display
- Easy to store integrated cuff holder
- Automatic power off function
- Simultaneous blood pressure and pulse reading
- AC adapter is optional (AC-230CZ)

**SPECIFICATIONS**

Measurement System: Oscillometric method  
 Measurement range: Pressure; 0 - 280 mmHg  
 Pulse; 40 - 180 pulse/min  
 Accuracy: Pressure; ±3 mmHg,  
 Pulse; ±5 %  
 Power source: AA size × 4  
 Optional AC/DC adapter( 6V = 4W )  
 Battery life: Manganese battery: Approx. 200 times  
 Alkaline battery: Approx. 700 times  
 Rated voltage: DC6V = 4W ( = : Direct Current )  
 Outside dimensions: 95mm ( W ) × 130mm ( H ) × 118mm ( D )  
 Weight: Unit: Approx. 320g ( without batteries )  
 Cuff: Approx. 160g



### CH-403C

Compact automatic inflation  
Blood Pressure Monitor with 7 memories



- 7 memories function
- Easy-to-read LCD display
- Compact & light weight
- Automatic power off function
- Automatic measuring function
- AC adapter is optional (AC-230CZ)

**SPECIFICATIONS**

Measurement System: Oscillometric method  
 Measurement range: Pressure; 0 - 280 mmHg  
 Pulse; 40 - 200 pulse/min  
 Accuracy: Pressure; ±3 mmHg,  
 Pulse; ±5 %  
 Power source: AA size × 4  
 Optional AC/DC adapter( 6V DC, 1A )  
 Battery life: Manganese battery: Approx. 200 times  
 Alkaline battery: Approx. 400 times  
 Rated voltage: DC6V = 4W ( = : Direct Current )  
 Outside dimensions: 135mm ( W ) × 51mm ( H ) × 130mm ( D )  
 Weight: Unit: Approx. 290g ( without batteries )  
 Cuff: Approx. 150g



Full auto calendar alarm clock

### CH-485E

Oval-shaped unique design,  
concept of Universal Design



- 30 memories function
- Full auto calendar alarm clock
- Easy-to-store integrated cuff holder
- Easy-to-read LCD display
- Large buttons for easy operation
- Automatic power off function
- Battery indicator
- Simultaneous blood pressure and pulse reading

**SPECIFICATIONS**

Measurement System: Oscillometric method  
 Measurement range: Pressure; 0 - 280 mmHg  
 Pulse; 40 - 180 pulse/min  
 Accuracy: Pressure; ±3 mmHg,  
 Pulse; ±5 %  
 Power source: AA size × 4  
 Battery life: Alkaline battery: Approx. 500 times  
 Rated voltage: DC6V = 4W ( = : Direct Current )  
 Outside dimensions: 129mm ( W ) × 152mm ( H ) × 121mm ( D )  
 Weight: Unit: Approx. 400g ( without batteries )  
 Cuff: Approx. 150g



### CH-432B

One touch operation, full automatic  
Blood Pressure Monitor



- Memory recall function
- Easy-to-read LCD display
- Full Automatic cuff inflation
- Automatic measuring function
- Automatic power off function

**SPECIFICATIONS**

Measurement System: Oscillometric method  
 Measurement range: Pressure; 0 - 280 mmHg  
 Pulse; 40 - 180 pulse/min  
 Accuracy: Pressure; ±3 mmHg,  
 Pulse; ±5 %  
 Power source: AA size × 4  
 Battery life: Manganese battery: Approx. 200 times  
 Alkaline battery: Approx. 700 times  
 Rated voltage: DC6V = 4W ( = : Direct Current )  
 Outside dimensions: 129mm ( W ) × 55mm ( H ) × 122mm ( D )  
 Weight: Unit: Approx. 230g ( without batteries )  
 Cuff: Approx. 150g



▶ Upper Arm / Semi-Automatic



**CH-311B**  
Compact palm top manual inflation  
Blood Pressure Monitor



- Memory recall function
- Simultaneous blood pressure and pulse reading
- One handed operation
- Easy-to-read LCD display
- Automatic power off function

**SPECIFICATIONS**

Measurement System: Oscillometric method  
 Measurement range: Pressure: 0 ~ 280 mmHg  
 Pulse: 40 ~ 180 pulse/min  
 Accuracy: Pressure: ± 3 mmHg,  
 Pulse: ± 5 %  
 Power source: AAA size x 2  
 Battery life: Manganese battery: Approx. 700 times  
 Rated voltage: DC3V ( : 0.1W ( : Direct Current )  
 Outside dimensions: 66.5mm( W )x 161.5mm( H )x 44.5mm( D )  
 Weight: Unit: Approx. 110g( without batteries )  
 Cuff: Approx. 150g



**CH-302B**  
Compact manual inflation  
Blood Pressure Monitor



- Memory recall function
- Easy-to-read LCD display
- Compact & light weight
- Automatic power off function

**SPECIFICATIONS**

Measurement System: Oscillometric method  
 Measurement range: Pressure: 0 ~ 280 mmHg  
 Pulse: 40 ~ 200 pulse/min  
 Accuracy: Pressure: ± 3 mmHg,  
 Pulse: ± 5 %  
 Power source: 6F22/9V x 1  
 Battery life: Manganese battery: Approx. 400 times  
 Rated voltage: DC9V ( : 0.1W ( : Direct Current )  
 Outside dimensions: 85mm( W )x 35mm( H )x 120mm( D )  
 Weight: Unit: Approx. 110g( without battery )  
 Cuff: Approx. 150g  
 Pumping bulb unit: Approx. 40g



▶ Wrist



**CH-308B**  
Easy operation manual inflation  
Blood Pressure Monitor



- Memory recall function
- Large LCD display
- Large button
- Automatic power off function

**SPECIFICATIONS**

Measurement System: Oscillometric method  
 Measurement range: Pressure: 0 ~ 280 mmHg  
 Pulse: 40 ~ 200 pulse/min  
 Accuracy: Pressure: ± 3 mmHg,  
 Pulse: ± 5 %  
 Power source: AA size x 4  
 Battery life: Manganese battery: Approx. 1000 times  
 Rated voltage: DC6V ( : 0.1W ( : Direct Current )  
 Outside dimensions: 123mm( W )x 44mm( H )x 95mm( D )  
 Weight: Unit: Approx. 120g( without batteries )  
 Cuff: Approx. 150g  
 Pumping bulb unit: Approx. 40g



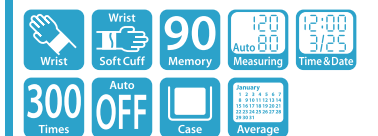
**CH-671F**  
Wrist measuring Automatic  
Blood Pressure Monitor with  
Time & Date and  
Monthly average function



- 90 memories function
- Monthly average function
- Simultaneous blood pressure and pulse reading
- Soft cuff for comfortable use
- Compact design for easy to carry
- Automatic power off function
- With compact storage case

**SPECIFICATIONS**

Measurement System: Oscillometric method  
 Measurement range: Pressure: 0 ~ 280mmHg  
 Pulse: 40 ~ 180 pulse/min  
 Accuracy: Pressure: ± 3 mmHg,  
 Pulse: ± 5 %  
 Power source: AAA size x 2  
 Battery life: Alkaline battery: Approx. 300 times  
 Rated voltage: DC3V ( : 1W ( : Direct Current )  
 Outside dimensions: 59mm( W )x 81mm( H )x 24mm( D )  
 Weight: Approx. 100g( without batteries )



Function mark explanation





### CH-656C

Slim and light-weight  
Wrist measuring Automatic  
7 memories function



- 7 memories function
- One touch full automatic operation
- Soft cuff for comfortable use
- Compact design for easy to carry
- Automatic power off function
- With compact storage case

#### SPECIFICATIONS

Measurement System: Oscillometric method  
 Measurement range: Pressure: 0 ~ 280 mmHg  
 Pulse: 40 ~ 180 pulse/min  
 Accuracy: Pressure: ±3 mmHg,  
 Pulse: ±5 %  
 Power source: AAA size x 2  
 Battery life: Alkaline battery: Approx. 400 times  
 Rated voltage: DC3V ( : Direct Current )  
 Outside dimensions: 67mm( W ) x 70mm( H ) x 21mm( D )  
 Weight: Approx. 100g( without batteries )



### CH-606

Wrist measuring Automatic  
Portable Blood Pressure  
Monitor with Time & Date



- 48 memories function
- Simultaneous blood pressure and pulse reading
- With time, day and date functions
- One touch automatic operation
- Easy-to put on preformed cuff
- With compact storage case

#### SPECIFICATIONS

Measurement System: Oscillometric method  
 Measurement range: Pressure: 0 ~ 300 mmHg  
 Pulse: 40 ~ 199 pulse/min  
 Accuracy: Pressure: ±3 mmHg,  
 Pulse: ±5 %  
 Power source: AAA size x 2  
 Battery life: Alkaline battery: Approx. 250 times  
 Rated voltage: DC3V ( : Direct Current )  
 Outside dimensions: 72mm( W ) x 70mm( H ) x 29mm( D )  
 Weight: Approx. 100g( without batteries )



### CH-607

Wrist measuring Automatic  
Portable Blood Pressure  
Monitor and Time & Date



- 99 memories function
- Simultaneous blood pressure and pulse reading
- With time, day and date functions
- One touch automatic operation
- With compact storage case

#### SPECIFICATIONS

Measurement System: Oscillometric method  
 Measurement range: Pressure: 0 ~ 300 mmHg  
 Pulse: 40 ~ 199 pulse/min  
 Accuracy: Pressure: ±3 mmHg,  
 Pulse: ±5 %  
 Power source: AAA size x 2  
 Battery life: Alkaline battery: Approx. 250 times  
 Rated voltage: DC3V ( : Direct Current )  
 Outside dimensions: 72mm( W ) x 70mm( H ) x 29mm( D )  
 Weight: Approx. 110g( without batteries )



### CH-605

Wrist measuring Automatic  
Portable Blood Pressure Monitor



- 48 memories function
- Simultaneous blood pressure and pulse reading
- Large size LCD display
- One touch automatic operation
- Easy-to put on preformed cuff
- With compact storage case

#### SPECIFICATIONS




Measurement System: Oscillometric method  
 Measurement range: Pressure: 0 ~ 300 mmHg  
 Pulse: 40 ~ 199 pulse/min  
 Accuracy: Pressure: ±3 mmHg,  
 Pulse: ±5 %  
 Power source: AAA size x 2  
 Battery life: Alkaline battery: Approx. 250 times  
 Rated voltage: DC3V ( : Direct Current )  
 Outside dimensions: 72mm( W ) x 70mm( H ) x 29mm( D )  
 Weight: Approx. 100g( without batteries )



Comparison

	Automatic Upper Arm			
Products				
Model	CH-463E	CH-462E	CH-461C	CH-432B
Outside dimensions	112 × 148 × 152mm	112 × 148 × 152mm	112 × 76 × 145mm	129 × 55 × 122mm
Weight (without batteries)	Unit: Approx. 520g, Cuff: Approx. 250g	Unit: Approx. 520g, Cuff: Approx. 140g	Unit: Approx. 340g, Cuff: Approx. 140g	Unit: Approx. 230g, Cuff: Approx. 150g
Cuff	Pro adjust cuff	Soft cuff	Soft cuff	Soft cuff
Memory	60 Memory	60 Memory	7 Memory	Memory recall
Display simultaneously				—
Auto measuring				
High-speed measurement				—
Auto power off				
Storage			—	—
Display	Alarm & Clock	Alarm & Clock	—	—
Battery life	500 times	500 times	700 times	700 times
Power source	AA size × 4	AA size × 4	AA size × 4	AA size × 4
Option (AC / DC adapter)				—
Silent				—
Page	4	5	5	8

	Automatic Upper Arm			
Products				
Model	CH-485E	CH-406D	CH-437C	CH-403C
Outside dimensions	129 × 152 × 121mm	145 × 68.8 × 105mm	95 × 130 × 118mm	135 × 51 × 130mm
Weight (without batteries)	Unit: Approx. 400g, Cuff: Approx. 150g	Unit: Approx. 300g, Cuff: Approx. 140g	Unit: Approx. 320g, Cuff: Approx. 160g	Unit: Approx. 290g, Cuff: Approx. 150g
Cuff	Soft cuff	Soft cuff	Soft cuff	Soft cuff
Memory	30 Memory	48 Memory	7 Memory	7 Memory
Display simultaneously				—
Auto measuring				
High-speed measurement	—	—	—	—
Auto power off				
Storage				—
Display	Alarm & Clock	—	—	—
Battery life	500 times	250 times	700 times	400 times
Power source	AA size × 4	AA size × 4	AA size × 4	AA size × 4
Option (AC / DC adapter)	—			
Silent	—	—	—	—
Page	7	6	7	8

	Manual Upper Arm		
Products			
Model	CH-311B	CH-308B	CH-302B
Outside dimensions	66.5 × 44.5 × 161.5mm	123 × 44 × 95mm	85 × 35 × 120mm
Weight (without batteries)	Unit: Approx. 110g, Cuff: Approx. 150g	Unit: Approx. 120g, Cuff: Approx. 150g Pumping bulb unit: Approx. 40g	Unit: Approx. 110g, Cuff: Approx. 150g Pumping bulb unit: Approx. 40g
Cuff	Soft cuff	Soft cuff	Soft cuff
Memory	Memory recall	Memory recall	Memory recall
Display simultaneously		—	—
Auto measuring	—	—	—
High-speed measurement	—	—	—
Auto power off			
Battery life	700 times	1000 times	400 times
Power source	AAA size × 2	AA size × 4	6F22/9V × 1
Page	9	9	10

	Wrist				
Products					
Model	CH-671F	CH-656C	CH-607	CH-606	CH-605
Outside dimensions	59 × 81 × 24mm	67 × 70 × 21mm	72 × 70 × 29mm	72 × 70 × 29mm	72 × 70 × 29mm
Weight (without batteries)	Approx. 100g	Approx. 100g	Approx. 110g	Approx. 100g	Approx. 100g
Cuff	Soft cuff	Soft cuff	Hard cuff	Hard cuff	Hard cuff
Memory	90 Memory	7 Memory	99 Memory	48 Memory	48 Memory
Display simultaneously		—			
Auto measuring					
Auto power off					
Time		—			—
Battery life	300 times	400 times	250 times	250 times	250 times
Power source	AAA size × 2	AAA size × 2	AAA size × 2	AAA size × 2	AAA size × 2
Case					
Page	10	11	11	12	12



# Digital Thermometers



CT461C CELSIUS (°C)  
 CT461F FAHRENHEIT (°F)  
 Reliable and accurate CE 0197

- General purpose use
- Auto memory recall of last reading
- Buzzer notices
- 3-Digits display
- Auto power off

#### SPECIFICATIONS

Measuring method: Temperature peak hold thermometer  
 Measuring range: 32.0°C ~ 44.0°C ( 89.6°F ~ 111.2°F )  
 Accuracy: Celsius  $\pm 0.1^{\circ}\text{C}$  ( 35.5 ~ 42.0°C )  
 Fahrenheit  $\pm 0.2^{\circ}\text{F}$  ( 95.9 ~ 107.6°F )  
 Display: Liquid crystal display ( LCD )  
 3 digits with decimal point °C ( °F )  
 battery weak mark and memory mark  
 Battery : DC1.5V ( Micro Alkaline Battery; LR41  $\times$  1 )  
 Battery life : Approx. 1.5 year ( If used 10 minutes a day )  
 Unit size : Approx. 130.8mm ( L )  $\times$  18.2mm ( W )  $\times$  11.6mm ( H )  
 Weight: Approx. 11.2g ( Including battery )



CT513W CELSIUS (°C)  
 Fully washable, water resistant,  
 always keeps clean CE 0086

- General purpose use
- Water resistant & fully washable
- Using antibacterial material for cases
- Auto memory recall of last reading
- Buzzer notices
- 3-Digits display
- Auto power off

#### SPECIFICATIONS

Measuring method: Temperature peak hold thermometer  
 Measuring range: 32.0°C ~ 42.0°C  
 Accuracy:  $\pm 0.1^{\circ}\text{C}$  ( 35.5 ~ 42.0°C )  
 Display: Liquid crystal display ( LCD )  
 3 digits with decimal point °C,  
 memory mark "M"  
 Battery mark  
 Battery : DC1.5V ( Micro Alkaline Battery; LR41  $\times$  1 )  
 Battery life : Approx. 3 years ( If used 3 times a day, for 10 min. each time )  
 Unit size : Approx. 129mm ( L )  $\times$  17mm ( W )  $\times$  8mm ( H )  
 Weight: Approx. 10g ( Including battery )



CT561C CELSIUS (°C)  
 CT561F FAHRENHEIT (°F)  
 Fully washable water resistant CE 0197

- General purpose use
- Water resistant & fully washable
- Auto memory recall of last reading
- Buzzer notices
- 3-Digits display
- Auto power off

#### SPECIFICATIONS

Measuring method: Temperature peak hold thermometer  
 Measuring range: 32.0°C ~ 44.0°C ( 89.6°F ~ 111.2°F )  
 Accuracy: Celsius  $\pm 0.1^{\circ}\text{C}$  ( 35.5 ~ 42.0°C )  
 Fahrenheit  $\pm 0.2^{\circ}\text{F}$  ( 95.9 ~ 107.6°F )  
 Display: Liquid crystal display ( LCD )  
 3 digits with decimal point °C ( °F )  
 battery weak mark and memory mark  
 Battery : DC1.5V ( Micro Alkaline Battery; LR41  $\times$  1 )  
 Battery life : Approx. 1.5 year ( If used 10 minutes a day )  
 Unit size : Approx. 130.8mm ( L )  $\times$  18.2mm ( W )  $\times$  11.6mm ( H )  
 Weight: Approx. 11.2g ( Including battery )



CT422 CELSIUS (°C)  
 Fully washable, water resistant,  
 always keeps clean CE 0086

- General purpose use
- Water resistant & fully washable
- Using antibacterial material for cases
- Auto memory recall of last reading
- Buzzer notices
- 3-Digits display
- Auto power off

#### SPECIFICATIONS

Measuring method: Temperature peak hold thermometer  
 Measuring range: 32.0°C ~ 42.9°C  
 Accuracy:  $\pm 0.1^{\circ}\text{C}$  ( 35.5 ~ 42.0°C )  
 Display: Liquid crystal display ( LCD )  
 3 digits with decimal point °C,  
 memory mark "M"  
 Battery mark  
 Battery : DC1.5V ( Micro Alkaline Battery; LR41  $\times$  1 )  
 Battery life : Approx. 3 years ( If used 1 times a day, for 10 min. each time )  
 Unit size : Approx. 128mm ( L )  $\times$  18mm ( W )  $\times$  8mm ( H )  
 Weight: Approx. 10g ( Including battery )



Coming soon

#### Function mark explanation





**CT830** [CELSIUS (°C) • FAHRENHEIT (°F)] **CE 0197**  
Multi-function Digital Ear Thermometer

- 9 memories of ear temperature
- Ear temperature mode or surface temperature mode available
- Celsius or Fahrenheit mode available
- No need to use probe cover
- Stop-watch for pulse counting

**SPECIFICATIONS**

Measuring range: For ear temperature mode; 34.0°C ~ 42.2°C (93.2 ~ 108°F)  
For Material surface temperature mode; -22 ~ 80°C (-7.6 ~ 176°F)

Accuracy: For ear temperature mode; ±0.2°C (0.4°F) for temperatures 35.5 ~ 42.0°C (95.9 ~ 107.6°F) ±0.3°C (0.5°F) for other ranges  
For Material surface temperature mode; ±0.3°C (0.5°F) for temperatures 22 ~ 42.2°C (-7.6 ~ 108°F) for other ranges. ±4% or ±2°C (4°F) whichever greater

Display: Liquid crystal display (LCD)  
3 digits with decimal point °C or °F

Battery: DC3V (Lithium Manganese Dioxide Battery CR2032 × 1)

Battery life: 3,000 consecutive measurements

Unit size: Approx. 115mm (L) × 37mm (W) × 29mm (H)

Weight: Approx. 60g (Including battery)

Auto OFF



**CT915** [CELSIUS (°C)] **CE 0086**  
Digital graphic thermometer

- 31 readings are displayed by graph
- Up to 120 reading can be recorded automatically
- Basal Body Temperature can be easily measured
- Alarm to notify measurement time is available
- Using antibacterial material for cases

**SPECIFICATIONS**

Measurement System: Temperature peak hold thermometer

Measurement range: 32.00°C ~ 42.00°C (Unit: 0.01°C)

Accuracy: ±0.05°C (35.00 ~ 38.00°C, other ±0.1)

Display: Display in value 4-digit LCD,  
Display in graph Bar graph of data of 31 days

Battery: DC3V (Lithium Manganese Dioxide Battery CR2032 × 1)

Battery life: Approx. 1 year (If used 1 time a day)

Unit size: Approx. 100mm (W) × 90mm (H) × 23.5mm (D)

Probe cord: Approx. 400mm

Weight: Approx. 100g (Including battery)

Auto OFF

Easy and Quick measurement !!



Comes with a compact carrying case.



**Caution**  
Measurement result with this unit may be different from a result by other type of thermometers due to a different measuring place.

**CT810** [CELSIUS (°C)]  
Twin Thermistors method for High Accuracy and Stable Measurement

- No need to use a probe cover
- Antibacterial material and water resistant construction
- For 2 seconds measurement time
- Auto Power OFF and 3,000 times use with one battery (LR44)

**SPECIFICATIONS**

Measuring range: 32.0°C ~ 42.0°C

Accuracy: ±0.1°C 36.0 ≤ T ≤ 39.0°C  
(Measuring temperature at 23.0°C)  
±0.2°C T < 36.0°C, T > 39.0°C  
(Measuring temperature at 23.0°C)

Display: Liquid crystal display (LCD)  
3 digits with decimal point °C,  
battery weak mark " "

Battery: DC1.5V (Micro Alkaline Battery LR44)

Battery life: Over 3,000 consecutive measurements

Unit size: Approx. 131mm (L) × 37mm (W) × 25mm (H)

Weight: Approx. 45g (Including battery)

Auto OFF

**Comparison**

Products							
Model	CT461C / CT461F	CT561C / CT561F	CT513W	CT422	CT830	CT810	CT915
Unit Size (Approx.)	130.8 × 18.2 × 11.6mm	130.8 × 18.2 × 11.6mm	129 × 17 × 8mm	128 × 18 × 8mm	115 × 37 × 29mm	131 × 37 × 25mm	100 × 90 × 23.5mm
Weight	Approx. 11.2g (Including battery)	Approx. 11.2g (Including battery)	Approx. 10g (Including battery)	Approx. 10g (Including battery)	Approx. 60g (Including battery)	Approx. 45g (Including battery)	Approx. 100g (Including battery)
Display	3 Digits	3 Digits	3 Digits	3 Digits	3 Digits	3 Digits	4 Digits
Anti Bacterial	—	—	—	—	—	—	—
Water Resistant	—	—	—	—	—	—	—
Buzzer	—	—	—	—	—	—	—
Auto power off	—	—	—	—	—	—	—
Memory recall	—	—	—	—	—	—	—
Battery life	1.5 year	1.5 year	3 years	3 years	3000 times	3000 times	1 year
Power source	LR44 × 1	LR44 × 1	LR44 × 1	LR44 × 1	CR2032	LR44 × 1	CR2032
Page	15	15	16	16	17	17	18

Function mark explanation

Celsius    Fahrenheit    °C / °F Conversion    Auto power off    3 Digits    4 Digits    Buzzer notice    Memory recall    9 Memory    120 memory    Water resistant    Antibacterial material    1 Year    1.5 Year    3 Years    3000 Times    Battery life

# Ultrasonic Nebulizer



Totally Portable !!



## CUN60

Handy design and light in weight with rechargeable battery pack



- Handy design with built-in detachable rechargeable battery pack, compact and light-weight
- Easy to use uses water as ultrasonic conducting medium, no gel is required
- Silent operation thanks to the ultrasonic vibration technology
- 3-speed nebulization rate control provides optimal treatment for different density
- Built-in timer automatically shuts off after 10 minutes use

### SPECIFICATIONS

Power: AC100V, 50/60Hz  
AC220-240V, 50/60Hz  
Power consumption: Approx. 10W  
Ultrasonic Frequency: 2.5 MHz  
Nebulization rate: 3-speed adjustable  
Particle size: 5 μMMAD  
Medication cup capacity: Max. 8 ml.  
Auto shut-off timer: Approx. 10 min  
Dimension: 88mm(W) x 143mm(H) x 53mm(D)  
Weight: Approx. 350g  
(Including rechargeable battery-pack)  
Accessories: Nose piece. Mouth nozzle. Extension tube. Adult & child masks. AC adapter. Medication cup( 15 pcs. )  
Soft carrying case.

# Digital Pedometer



## TW300

For your healthy life



- Easy to read large Display
- Calorie consumption chart
- Sensitivity adjustment switch

### SPECIFICATIONS

Step detection system: Pendulum mechanism  
Display: Liquid crystal digital  
Steps: 9 ~ 99999 steps  
Power source: Type LR44 x 1  
Battery life: Approx. 2 years  
Dimension: 55mm(W) x 35.5mm(H) x 12.8mm(D)  
Weight: Approx. 21g (without batteries)

# Body Fat Analyzer



Easy Operation !!



## BM100

For your healthy life



- The body conditions up to 15 persons can be registered
- The obesity is displayed at four levels
- Large LCD Display

### SPECIFICATIONS

Measuring range: 5% ~ 50% (Measuring unit: 0.1%)  
Settable height: 100 ~ 200cm or 3' 5" ~ 6' 8" (ft-in)  
Settable weight: 10 ~ 150kg or 1:9 ~ 23:9 (st.lb) or 23 ~ 331 (lb)  
Settable age: 10 ~ 80 age  
Power source: AAA size x 4  
Battery life: Approx. 1 year  
Dimension: 265mm(W) x 71mm(H) x 125mm(D)  
Weight: Approx. 300g (without batteries)

# Model Index

Model Index	Unit				Master Carton			Jan Code	Page
	Dimension(W×H×Dmm)	Weight(g)	Packed Q'TY	M3	Kg				
<b>Digital Blood Pressure Monitors</b>									
CH-463E	195.0	157.0	203.0	1219.0	10	0.079	16.3	4580193650207	4
CH-462E	170.0	135.0	195.0	972.0	20	0.102	23.5	4580193650368	5
CH-461C	150.0	120.0	130.0	753.0	20	0.064	17.2	4580193650191	5
ACCUTUBE	175.0	145.0	165.0	385.0	20	0.096	11.8	4580193650375	6
CH-406D	145.0	68.8	105.0	300.0	12	0.038	10.0	4580193650047	6
CH-437C	95.0	130.0	118.0	320.0	10	0.036	9.0	4966006708097	7
CH-485E	129.0	152.0	121.0	400.0	10	0.044	9.7	4966006708066	7
CH-403C	135.0	51.0	130.0	290.0	10	0.032	8.0	4966006627435	8
CH-432B	129.0	55.0	122.0	230.0	20	0.065	14.0	4966006689143	8
CH-311B	66.5	161.5	44.5	110.0	20	0.056	11.5	4562195130079	9
CH-308B	123.0	44.0	95.0	120.0	10	0.038	7.0	4966006708028	9
CH-302B	85.0	35.0	120.0	110.0	10	0.030	5.5	4966006627428	10
CH-671F Wrist Type	59.0	81.0	24.0	100.0	20	0.033	8.0	4966006708080	10
CH-607 Wrist Type	72.06	70.0	29.0	110.0	20	0.027	6.5	4966006708073	11
CH-656C Wrist Type	70.0	67.0	21.0	100.0	20	0.028	6.5	4966006689167	11
CH-606 Wrist Type	72.0	70.0	29.0	100.0	20	0.027	6.5	4966006689358	12
CH-605 Wrist Type	72.0	70.0	29.0	100.0	20	0.027	6.5	4966006689341	12
<b>Digital Thermometers</b>									
CT461C	130.8	18.2	11.6	11.2	200	0.047	11.0	4966006627886	15
CT461F	130.8	18.2	11.6	11.2	200	0.047	11.0	4966006627879	15
CT561C	130.8	18.2	11.6	11.2	200	0.047	11.0	4966006627909	15
CT561F	130.8	18.2	11.6	11.2	200	0.047	11.0	4966006627893	15
CT513W	129.0	17.0	8.0	10.0	200	0.045	9.7	4966006627602	16
CT422	129.0	17.0	8.0	10.0	200	0.045	9.7	4580193650382	16
CT830	115.0	25.0	37.0	60.0	40	0.071	10.2	4580193650030	17
CT810	131.0	25.0	25.0	45.0	100	0.098	17.0	4966006627633	17
CT915	90.0	100.0	23.5	100.0	60	0.052	15.0	4966006708035	18
<b>Ultrasonic Nebulizer</b>									
CUN60	88.0	143.0	350.0	350.0	10	0.050	14.5	4966006689211	19
<b>Digital Pedometer</b>									
TW300	80.0	137.0	26.0	44.0	200	0.058	820.0	4580193650054	20
<b>Body Fat Analyzer</b>									
BM100	265.0	71.0	300.0	300.0	20	0.088	13.0	4966006708011	20

## Free Manuals Download Website

<http://myh66.com>

<http://usermanuals.us>

<http://www.somanuals.com>

<http://www.4manuals.cc>

<http://www.manual-lib.com>

<http://www.404manual.com>

<http://www.luxmanual.com>

<http://aubethermostatmanual.com>

Golf course search by state

<http://golfingnear.com>

Email search by domain

<http://emailbydomain.com>

Auto manuals search

<http://auto.somanuals.com>

TV manuals search

<http://tv.somanuals.com>