

Implementing Citrix XenApp 5.0 for Windows Server 2008

A05 Exam

Preparation Guide

Citrix Education

2.0

24 August 2009



Notice**NOTICE**

Citrix® Systems, Inc. (Citrix) makes no representations or warranties with respect to the content or use of this publication. Citrix specifically disclaims any expressed or implied warranties, merchantability or fitness for any particular purpose. Citrix reserves the right to make any changes in specifications and other information contained in this publication without prior notice and without obligation to notify any person or entity of such revisions or changes.

© Copyright 2008 Citrix Systems, Inc. All Rights Reserved.

No part of this publication may be reproduced or transmitted in any form or by any means, electronic or mechanical, including photocopying, recording or information storage and retrieval systems, for any purpose other than the purchaser's personal use, without express written permission of:

Citrix Systems, Inc.
851 W. Cypress Creek Road
Ft. Lauderdale, FL 33309
<http://www.citrix.com>

Marks

The following marks are service marks, trademarks or registered trademarks of their respective owners in the United States and other countries.

Mark	Owner
Active Directory®, Microsoft®, Microsoft Access®, Microsoft Internet Explorer®, Microsoft Office®, Outlook®, Powerpoint®, SQL Server™, SQL Express™, Visio®, Windows®, WindowsCE®, WindowsME®, Windows Server™, Windows NT™, Windows Vista™	Microsoft Corporation
Adobe®, Adobe Acrobat®, Adobe Reader®, Flash™, Macromedia®	Adobe Systems, Inc.
IBM®, DB2®	International Business Machines, Inc.
Citrix®, ICA™, Citrix XenApp™, Citrix Access Gateway™, Program Neighborhood™, SpeedScreen™, MyCitrix™, Citrix Subscription Advantage™, Citrix Applications™	Citrix Systems, Inc.
RC5™, RSM™	RSA Data Security, Inc.
SAP SM	SAP Aktiengesellschaft
Java®, Sun Microsystems®	Sun Microsystems, Inc.
Oracle®	Oracle Corporation
HP®, LaserJet™	Hewlett-Packard Company
Adobe®, Adobe Acrobat®, Adobe Reader®, Flash™, Macromedia®	Adobe Systems, Inc.
Apache®	Apache Micro Peripherals, Inc.

Disclaimer

This exam preparation guide is designed to allow you to assess the types of questions that may be asked during the Implementing Citrix XenApp 5.0 for Windows Server 2008 (1Y0-A05) certification exam. Please be aware that the content of this guide in no way ensures a passing score on the certification exam.

Author

Lourdes Soler, Senior Exam Developer, Citrix Education

Item Development Team

Andrew Slafka, Citrix Specialist, Infrastructure Services, EPCO, Inc.
Glenn L. Porter, BSc, Technical Director, Lewis Learning Ltd.
Gustavo Gonzalez, Citrix Architect & Instructor, Education, New Horizons of Georgia
Howson Yu, Citrix Engineer, Application Hosting Services, Kaiser Permanente
Marc Versley, Senior System Administrator, Information Resource Department, Southwest Florida
Water Management District
Mark Kroehler, VP, Citrix Architect, Enterprise Technology & Delivery, Bank of America
Paul O'Doherty, Principal Consultant, Gibraltar Solutions Inc.

Subject Matter Experts

Adam Mandelbloom, Technical Relationship Manager, Technical Support
Adam Pallesen, Courseware Developer, Education
Andy Zhu, Lead Software Test Engineer 2, Client Server Products
Antoine Yeramian, Senior Consultant, Consulting, EMEA
Brad Moczik, Sr. Courseware Developer, Education
Brian Moss, Sr. Offline Technical Support Engineer, Technical Support
Christian Suarez, Sr. Technical Relationship Manager, Technical Support
Dan Allen, Senior Architect, Citrix Consulting
Daniel Romig, Lead Software Test Engineer, Engineering
Derrick Rountree, Systems Analyst, Enterprise Architecture
Derick Warren, Senior Offline Support Engineer, Technical Support
Donald A. Guzdzioł, Lead Software Test Engineer, XenApp Integration and Validation
Erick Verlangieri, UX Lead Applications Specialist, Customer Experience and Design
Frank Marzullo, Global Escalation Engineer, Technical Support
George Prado, Senior Architect, Citrix Consulting
Imtiaz Kabir, Sr. Software Test Engineer, XenApp Product Development
Jamie Baker, Lead Escalation Engineer, Technical Support
Jeremy Boehl, Courseware Developer, Education
Jo Harder, Senior Architect, Technical Readiness
Karla Stagray, Senior Courseware Developer Lead, Citrix Education
Lee Clements, System Engineer, Knowledge Management
Lydia Kellman, Senior Courseware Developer, Education
Matthew Cody, Senior Technical Lead, Technical Support
Michael Palesch, Principal Consultant, Citrix Consulting Central Europe
Michael Schaeffer, Sr. Architect, Americas Consulting
Michael Tio, Sr. Field Readiness Coordinator, Americas Field and Channel Readiness
Nick Rintalan, Architect, Citrix Consulting
Parry Kitchner, Lead Software Test Engineer, Engineering
Pedro Tramont Cisneiros, Technical Support Engineer, Technical Support
Ralf Schmidt, Instructor Relations Manager, Education Services, Europe, Middle East & Africa
Stanley Victor, Lead Software Test Engineer I, AVG
Steven Gallagher, Principal Consultant, Citrix Consulting
Syed Azam Ali, Lead Software Test Engineer II, Engineering
Victor Cataluña, Sr. Software Quality Engineer, Application Virtualization Group- Product Development
Wayne Baker, CCI Program Manager (EMEA), Education

Table of Contents

1	The Exam	1
	1.1 Purpose of Exam	1
	1.2 Pre-release Testing.....	1
	1.3 Number of Questions	1
	1.4 Passing Score	1
	1.5 Time Limit	1
	1.6 Registration and Administration	2
	1.7 Registering with Pearson VUE	2
	1.8 Certification Tracks	2
	1.9 Citrix Exam Policies	2
	1.10 Commenting During Live Exam.....	3
2	The Intended Audience	4
	2.1 Intended Audience	4
	2.2 Defining the Role Tested	4
3	Preparatory Recommendations for the Exam	5
	3.1 Introduction.....	5
	3.2 Recommended Knowledge and Skills	5
	3.3 Recommended Product Experience	5
	3.4 Recommended Courses.....	5
4	Exam Sections and Weights.....	6
	4.1 Introduction.....	6
	4.2 Section Titles and Weights	6
	4.3 How Section Weights are Related to Questions on the Exam	6
5	Exam Objectives and Resources for the Exam	7
	5.1 Introduction.....	7
	5.2 Obtaining an Evaluation License of Citrix XenApp 5.0.....	7
	5.3 Resources Used to Develop the Exam	8
6	Interactive Item Types	15
	6.1 Introduction.....	15
	6.2 Description of Drag and Drop Items.....	15
	6.3 Specialized Cursors in Drag and Drop Items.....	15
	6.4 Prohibited Cursor Indicator.....	16
	6.5 Insert Cursor Indicator	17
	6.6 Deselecting an option in a Drag and Drop Item	17
	6.7 Description of Point and Click Items.....	17
	6.8 Specialized Indicator in Point and Click Items.....	17
	Figure 6.9	18
	6.10 Deselecting a Spot in a Point and Click Item	18
7	Appendix: Practice.....	19

1 The Exam

1.1 Purpose of Exam The A05 exam certifies that successful candidates have the knowledge and skills necessary to install, configure, administer, support and troubleshoot an enterprise edition of Citrix XenApp 5.0 for Windows Server 2008 implementation in an enterprise environment.

1.2 Pre-release Testing Once all the questions were developed for this exam, it was offered at no charge to individuals who expressed interest in obtaining the certification and who fit the audience classification for this exam.

Candidates who took this exam also completed a survey. The exam and survey results were analyzed to determine which questions should be kept in the final version of the exam. Based on those results, the timing for the exam as well as the passing score was determined.

Once the analysis was completed and the passing score determined, candidates who obtained a passing score on the pre-release exam also obtained their certification.

1.3 Number of Questions The A05 exam is an 81-question exam written in English.

1.4 Passing Score The passing score for this exam is 68% and is based on the analysis of scores of candidates from the pre-release exam.

1.5 Time Limit Native English speakers have 105 minutes to complete the exam. Non-native English speakers who take the exam in English have 135 minutes to complete the exam.

Non-native English speakers must explicitly ask for the time extension when registering for the exam in English. Candidates should verify the specific process with the test provider they choose.

1.6 Registration and Administration

This exam will be administered through Pearson VUE. For details on the rules and procedures associated with registering for and taking the exam, please visit the Exams page at www.CitrixEducation.com.

1.7 Registering with Pearson VUE

In the United States and Canada, call 1-800-931-4084. Outside of the U.S. and Canada, visit the Pearson VUE website (www.VUE.com) to locate a testing center in your area and register for an exam with Pearson VUE.

1.8 Certification Tracks

Passing the A05 exam is a requirement for the following certifications:

- Citrix Certified Administrator (CCA) for Citrix XenApp 5 for Windows Sever 2008 certification
 - Citrix Certified Administrator (CCA) for Citrix XenApp 5 Platinum Edition certification
 - Citrix Certified Advanced Administrator (CCAA) for Citrix XenApp 5 for Windows Server 2008 certification
-

1.9 Citrix Exam Policies

If a candidate fails an exam on the first attempt, he or she must wait 24 hours from their original appointment time before they can register to retake the exam. If a candidate fails on a second attempt or any attempt thereafter, he or she must wait 14 calendar days after the failed attempt to retake the exam.

Pre-release exams, such as betas and alphas, may only be taken once.

For more information on Citrix Education retake policies, please visit http://www.citrixtraining.com/content/index.cfm/cgroup_id:38.

Citrix Education monitors exam retaking activity for breaches of this policy. Breach of this policy can result in sanctions up to and including temporary ban from taking Citrix exams, de-certification or both.

For more information on Citrix Education security policies, please visit http://www.citrixtraining.com/content/index.cfm/cgroup_id:48.

**1.10
Commenting
During Live
Exam**

Citrix Education is committed to continuous monitoring of exams and updating them as needed. As a practice, Citrix Education regularly reviews and refreshes exams and exam questions even during the live administration of the exam. Comments made by candidates during exams are used as anecdotal feedback and are considered by the Citrix Exam Development team when making general decisions about the exam and specific exam questions. Comments are not considered when determining the final results for a specific exam; making comments during an exam will not impact a candidate's final pass/fail decision.

2 The Intended Audience

2.1 Intended Audience

The A05 exam is a rigorous examination of subjects that are critical to an administrator's role as defined by subject matter experts (SMEs) at Citrix Systems, Inc. This role includes, but is not limited to:

- Systems Administrators
- Technical Support staff
- Systems Integrators
- Citrix Consultants/Architects
- Sales/Systems Engineers (SEs)

2.2 Defining the Role Tested

The intended audience was determined by SMEs for XenApp through a Job Task Analysis (JTA) procedure. The SMEs defined the audience by discussing the job functions that require use of the enterprise edition of the Citrix XenApp 5.0 for Windows Server 2008 product. The SMEs also determined that the exam should focus primarily on Citrix products.

3 Preparatory Recommendations for the Exam

3.1 Introduction

It is recommended that candidates have the knowledge, skills, and abilities necessary to install, configure, administer, support and troubleshoot an enterprise environment that contains a server farm running the enterprise edition of Citrix XenApp 5.0 for Windows Server 2008 prior to taking this exam.

3.2 Recommended Knowledge and Skills

Candidates should have the following knowledge and skills prior to taking this exam:

- Basic configuration of Microsoft Windows Server 2003 and 2008
 - Management of users' permissions and rights in Microsoft Active Directory 2003
 - Intermediate administration skills, including:
 - An understanding of protocols (TCP)
 - An understanding of firewall concepts
 - An understanding of email administration and account creation
 - An understanding of Terminal Services policies and profiles
 - The ability to create shares and give access to shared folders/files
 - Knowledge of basic database concepts
-

3.3 Recommended Product Experience

It is recommended that candidates have at least three (3) months of experience installing, configuring and maintaining an enterprise edition of Citrix XenApp 5.0 for Windows Server 2008 implementation.

3.4 Recommended Courses

For optimal performance on this exam, Citrix recommends that candidates attend or self-study the CXA-201-1I Implementing Citrix XenApp 5.0 for Windows Server 2008 course or CTX-202-1I Implementing Citrix XenApp 5.0 for Windows Server 2008 Skills Update course.

Citrix also recommends that candidates obtain field experience, if possible.

4 Exam Sections and Weights

4.1 Introduction

The Implementing Citrix XenApp 5.0 for Windows Server 2008 (A05) exam is divided into nine (9) sections. Each section of the exam is weighted as follows, totaling 100%.

4.2 Section Titles and Weights

Section	Weight
Understanding the Citrix Architecture	7%
Licensing and Installing XenApp	7%
Installing and Configuring Web Interface	11%
Configuring ICA Sessions	14%
Managing Applications	14%
Managing XenApp Policies	8%
Managing and Maintaining the Server and Farm	16%
Configuring Printing	14%
Troubleshooting XenApp	9%
Total	100%

4.3 How Section Weights are Related to Questions on the Exam

Section weights correlate directly to the number of questions on the exam. For example, if an exam has 60 questions, and section 1 is weighted as 50% of the exam, then 30 of the questions on the exam will be related to section 1 ($60 * 50\% = 30$).

Section weights are not used to calculate a candidate's score. Section weights are meant to indicate the percentage of the exam that covers certain content. However, because some questions may have different point values assigned to them, section weights and exam scores do not always have a one-to-one correlation.

5 Exam Objectives and Resources for the Exam

5.1 Introduction

The questions for the exam were developed directly from the exam objectives. The exam objectives are used to test the knowledge, skills and abilities required of the exam taker, related to each section of the exam.

Some of the exam objectives will correspond, or map, to field or hands-on experience. Candidates are expected to have at least three (3) months of experience with Citrix implementations of the enterprise edition of Citrix XenApp 5.0 for Windows Server 2008 to increase their likelihood of passing.

5.2 Obtaining an Evaluation License of Citrix XenApp 5.0

Candidates can get some hands-on experience by obtaining an evaluation license for Citrix XenApp 5.0 for Windows Server 2008. Individuals can obtain evaluation licenses by either contacting customer care or by purchasing and attending the CXA-201-1I Implementing Citrix XenApp 5.0 for Windows Server 2008 course or CTX-202-1I Implementing Citrix XenApp 5.0 for Windows Server 2008 Skills Update course.

**5.3 Resources
Used to
Develop the
Exam**

The following resources were used to develop this exam:

Resource	How to Obtain
CXA-201-1I Implementing Citrix XenApp 5.0 for Windows Server 2008 course	This course is available at Citrix Authorized Learning Centers (CALCs) worldwide. To find a course schedule in your region, please visit www.citrixeducation.com .
CTX-202-1I Implementing Citrix XenApp 5.0 for Windows Server 2008 Skills Update course	This course is available at Citrix Authorized Learning Centers (CALCs) worldwide. To find a course schedule in your region, please visit www.citrixeducation.com .
Citrix XenApp 5.0 for Windows Server 2008 Administrator's Guide	Refer to the XenApp Document Library included with the product or http://support.citrix.com/article/ctx115519
Licensing: Generating Usage Reports Using the License Management Console	Refer to http://support.citrix.com/article/ctx108654
Licensing Architecture: An Overview	Refer to http://support.citrix.com/article/ctx108656
Licensing: Firewalls and Security Considerations	Refer to http://support.citrix.com/article/ctx108658
Getting Started with Citrix XenApp 5.0	Refer to http://support.citrix.com/article/ctx116418
Citrix XenApp 5.0 Installation Guide	Refer to http://support.citrix.com/article/ctx116573
Citrix Access Suite 4.0 - Disaster Recovery Planning and Configuration	Refer to http://support.citrix.com/article/ctx107597
Load Manager Administrator's Guide	Refer to http://support.citrix.com/article/ctx116426

5.4 Exam Objectives

For each exam objective, the chart below lists the corresponding technical publication(s) referenced.

For all sections, at least three (3) months of experience administering an enterprise edition of Citrix XenApp 5.0 for Windows Server 2008 implementation is recommended.

Note: Hands-on experience is considered technical or practical experience with the enterprise edition of Citrix XenApp 5.0 for Windows Server 2008 product in a lab or proof-of-concept (POC) environment.

Section	Objectives	Citrix Course and/or Technical Publication
Understanding the Citrix Architecture	<ul style="list-style-type: none"> • Given a list of statements, identify those that describe how a given feature or component for XenApp functions. • Determine the appropriate service(s) to enable, protocol(s) and/or port number(s), given a description of an environment. • Given a description of an environment, determine the appropriate configurations for one or more zones. • Given a list of options, identify what is contained in the data store. 	<ul style="list-style-type: none"> • Citrix XenApp 5.0 for Windows Server 2008 Administrator's Guide • Hands-on Experience
Licensing and Installing XenApp	<ul style="list-style-type: none"> • Given a description or requirements, identify licensing functionality including ports. • Based on the need to allocate licenses for XenApp users, identify how to allocate licenses from MyCitrix including adding the license server host name. • Given a scenario, assess the impacts of managing licensing server report log files. • Determine how to create or join a farm, given a description of an environment. 	<ul style="list-style-type: none"> • Citrix XenApp 5.0 for Windows Server 2008 Administrator's Guide • Hands-on Experience • CXA-201-11 Implementing Citrix XenApp 5.0 for Windows Server 2008 course

<p>Licensing and Installing XenApp (continued)</p>	<ul style="list-style-type: none"> • Determine how to add users to the remote desktop users group to meet requirements. 	<ul style="list-style-type: none"> • CTX-202-11 Implementing Citrix XenApp 5.0 for Windows Server 2008 Skills Update course • Licensing Architecture: An Overview • Licensing: Generating Usage Reports Using the License Management Console • Licensing: Firewalls and Security Considerations
<p>Installing and Configuring Web Interface</p>	<ul style="list-style-type: none"> • Given a diagram of a network environment and requirements, place Web Interface in the appropriate location. • Given a diagram of a network environment and requirements, identify the communication path. • Given a list of requirements, determine the appropriate method to configure a XenApp web site so that users can authenticate to Web Interface. • Given a list of requirements, determine when to configure Web Interface so that it works with Secure Gateway/Access Gateway for direct or gateway direct connections. • Given a scenario and/or list of requirements, determine how to configure a XenApp Services site. 	<ul style="list-style-type: none"> • Citrix XenApp 5.0 for Windows Server 2008 Administrator's Guide • Hands-on Experience • CXA-201-11 Implementing Citrix XenApp 5.0 for Windows Server 2008 course • CTX-202-11 Implementing Citrix XenApp 5.0 for Windows Server 2008 Skills Update course

<p>Installing and Configuring Web Interface (continued)</p>	<ul style="list-style-type: none"> • Based on a requirement for application streaming, determine how to configure a Web Interface site to support application streaming. • Given a scenario depicting a configuration issue related to Web Interface (e.g. users cannot access the WI site, cannot authenticate, cannot enumerate application list, cannot launch an app, etc.) determine the root cause(s) and/or the appropriate action(s) to take to resolve these issues. 	
<p>Configuring ICA Sessions</p>	<ul style="list-style-type: none"> • Given a scenario, determine how to enable a Citrix policy to configure ICA settings. • Determine how to maintain plugins. • Given a scenario, determine how to configure display settings. • Determine how to configure SpeedScreen Browser Acceleration based on a given scenario. • Determine how to configure SpeedScreen Flash Acceleration based on a given scenario. • Determine how to configure SpeedScreen Multimedia Acceleration based on a given scenario. • Determine how to configure SpeedScreen Graphic (Image) Acceleration based on a given scenario. • Determine how to configure SpeedScreen Progressive Display based on a given scenario. • Determine how to configure virtual channel bandwidth control (including where to configure specific numbers vs. percentages). 	<ul style="list-style-type: none"> • Citrix XenApp 5.0 for Windows Server 2008 Administrator's Guide • Hands-on Experience • CXA-201-11 Implementing Citrix XenApp 5.0 for Windows Server 2008 course • CTX-202-11 Implementing Citrix XenApp 5.0 for Windows Server 2008 Skills Update course

<p>Managing Applications</p>	<ul style="list-style-type: none"> • Differentiate between remote and streaming application delivery methods by specifying when and why to use either delivery method, given requirements. • Given a description of an environment including applications, explain how to publish an installed application. • Determine how publishing an application can impact session sharing. • Given a scenario and desired outcomes, specify how to profile an application according to best practices. • Given a scenario and list of requirements, determine how to publish a streaming application to a Client. • Given a scenario and list of requirements, publish a streaming application so that it is streamed to the server to meet those requirements. • Determine how to configure a published application for encryption, given a list of requirements. 	<ul style="list-style-type: none"> • Citrix XenApp 5.0 for Windows Server 2008 Administrator's Guide • Hands-on Experience • CXA-201-11 Implementing Citrix XenApp 5.0 for Windows Server 2008 course • CTX-202-11 Implementing Citrix XenApp 5.0 for Windows Server 2008 Skills Update course
<p>Managing XenApp Policies</p>	<ul style="list-style-type: none"> • Given a scenario of an environment, determine the impacts to users with multiple policies configured. • Given a list of options, identify to whom or what a policy can be applied. • Determine when or how to configure a shadowing policy to meet requirements. • Identify how to view the resultant policy. 	<ul style="list-style-type: none"> • Citrix XenApp 5.0 for Windows Server 2008 Administrator's Guide • Hands-on Experience • CXA-201-11 Implementing Citrix XenApp 5.0 for Windows Server 2008 course

<p>Managing XenApp Policies (continued)</p>		<ul style="list-style-type: none"> • CTX-202-11 Implementing Citrix XenApp 5.0 for Windows Server 2008 Skills Update course
<p>Managing and Maintaining the Server and Farm</p>	<ul style="list-style-type: none"> • Given requirements, determine how or when to configure CPU Utilization. • Given a scenario and/or requirements, determine how to delegate administrative rights to meet those requirements. • Specify how to create the Configuration Logging database or how to configure configuration logging to meet stated requirements. • Identify the reason why the XML Service Trust should be configured. • Given a scenario and/or desired outcomes, specify how to configure Data Collector preference settings. • Determine how to create and manage a data store. • Determine how to maintain correct patching and ensure reliable recovery. • Analyze an environment to assess whether or not a server reboot schedule is implemented correctly. • Determine how to create and apply a load evaluator. 	<ul style="list-style-type: none"> • Citrix XenApp 5.0 for Windows Server 2008 Administrator's Guide • Hands-on Experience • CXA-201-11 Implementing Citrix XenApp 5.0 for Windows Server 2008 course • CTX-202-11 Implementing Citrix XenApp 5.0 for Windows Server 2008 Skills Update course • Getting Started with Citrix XenApp 5.0 • Citrix XenApp 5.0 Installation Guide • Citrix Access Suite 4.0 - Disaster Recovery Planning and Configuration • Load Manager Administrator's Guide

<p>Configuring Printing</p>	<ul style="list-style-type: none"> • Given a description of an environment, determine when or how to use Universal Print Driver or native drivers. • Given a scenario, determine how to install and replicate print drivers. • Determine how to configure printing policies based on a given scenario. • Given a scenario describing a common print issue, determine how to troubleshoot the issue. • Determine how to test new print drivers and when to run Stress Printer Utility. • Given a description of printers in an environment, determine the differences between autogenerated and network printers. 	<ul style="list-style-type: none"> • Citrix XenApp 5.0 for Windows Server 2008 Administrator's Guide • Hands-on Experience • CXA-201-11 Implementing Citrix XenApp 5.0 for Windows Server 2008 course • CTX-202-11 Implementing Citrix XenApp 5.0 for Windows Server 2008 Skills Update course
<p>Troubleshooting XenApp</p>	<ul style="list-style-type: none"> • Given the description of a common issue with XenApp Services, determine the appropriate resolution. • Given the description of a common issue in a XenApp environment, determine how to use XenApp tools for troubleshooting the issue. • Given the description of a common issue related to client connectivity, determine how to use RDP tools for troubleshooting the issue. • Given the description of a common issue related to client connectivity, determine how to use Telnet for troubleshooting the issue. 	<ul style="list-style-type: none"> • Citrix XenApp 5.0 for Windows Server 2008 Administrator's Guide • Hands-on Experience • CXA-201-11 Implementing Citrix XenApp 5.0 for Windows Server 2008 course • CTX-202-11 Implementing Citrix XenApp 5.0 for Windows Server 2008 Skills Update course

6 Interactive Item Types

6.1 Introduction

The Implementing Citrix XenApp 5.0 for Windows Server 2008 exam consists primarily of traditional multiple-choice items. This exam also includes non-traditional *Drag and Drop* and *Point and Click* interactive items.

While answers are stored for traditional multiple-choice items so that exam-takers may revisit the item and see their chosen answers, the same is not true of non-traditional interactive items. Once an answer is given for a non-traditional item, it is stored. However, if the exam-taker returns to the item, the answer will not be visible and they will be prompted to answer the item again. Specific features of non-traditional items will be discussed in this section.

6.2 Description of Drag and Drop Items

Drag and drop items instruct candidates to drag objects to pre-defined destinations. These types of items test a candidate's understanding of a process, order, or other regimented concept.

In these items, pre-defined destinations are marked by rectangular objects called destination panels. Destination panels indicate where objects can be placed in the user interface. These panels contain instructions, such as "Place Here" or "Place First Here" (as shown in Figures 6.4 and 6.5) or similar text, that alert candidates that this is a panel onto which an object should be dragged. Objects that can be moved are marked by an action word or sentence.

As with the other non-traditional items, candidates must click "Done" within the task window when finished in order to record their answer(s) and move on to the next item.

6.3 Specialized Cursors in Drag and Drop Items

While dragging these objects, candidates should pay careful attention to the cursor. Figures 6.4 and 6.5 depict the two cursors candidates will see while completing a Drag and Drop item in this exam.

6.4 Prohibited Cursor Indicator

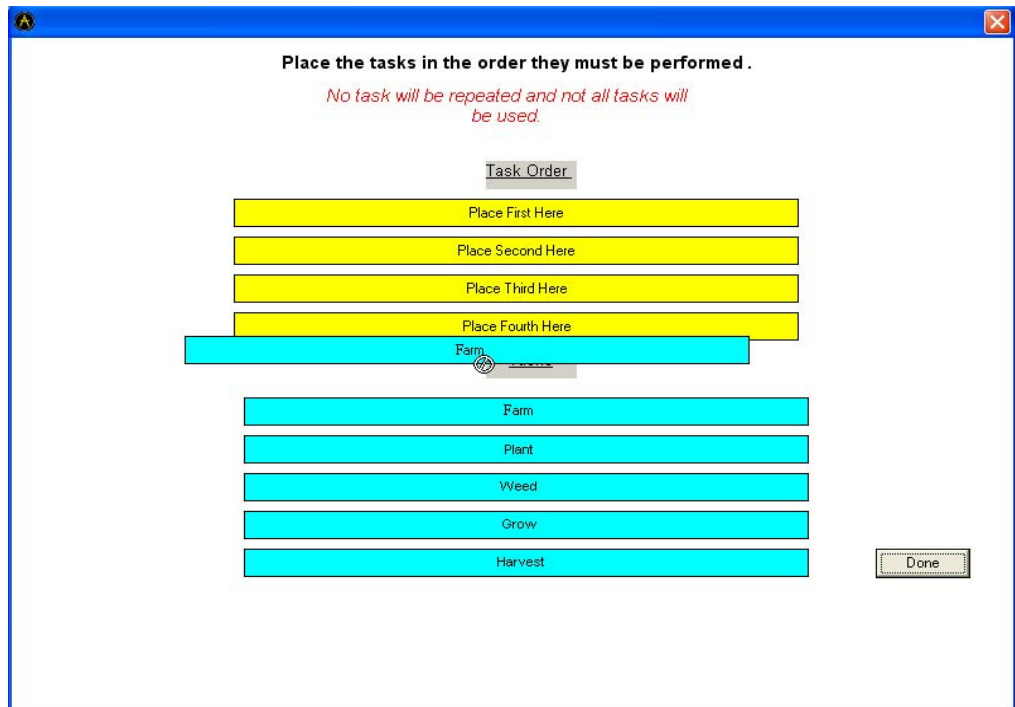


Figure 6.4 In this figure, a candidate is attempting to drag an object to a destination panel and the prohibited symbol appears. The candidate will not be able to drop the source panel into the destination panel when the prohibited symbol is present. The candidate should reposition the source panel on the desired destination panel until he or she sees the insert symbol shown in Figure 6.5.

6.5 Insert Cursor Indicator



Figure 6.5 In this figure, while a candidate attempts to drag an object to a destination panel, the insert symbol appears. The candidate will be able to drop the source panel into the desired destination panel when the insert symbol is present.

6.6 Deselecting an option in a Drag and Drop Item

If a candidate moves an object to the incorrect destination panel, the candidate can remove the item by dragging it out of the destination panel, towards the object's original location.

6.7 Description of Point and Click Items

Point and click items or hotspot items require candidates to click responsive areas in an image. This type of an item tests candidates' knowledge of a product's UI.

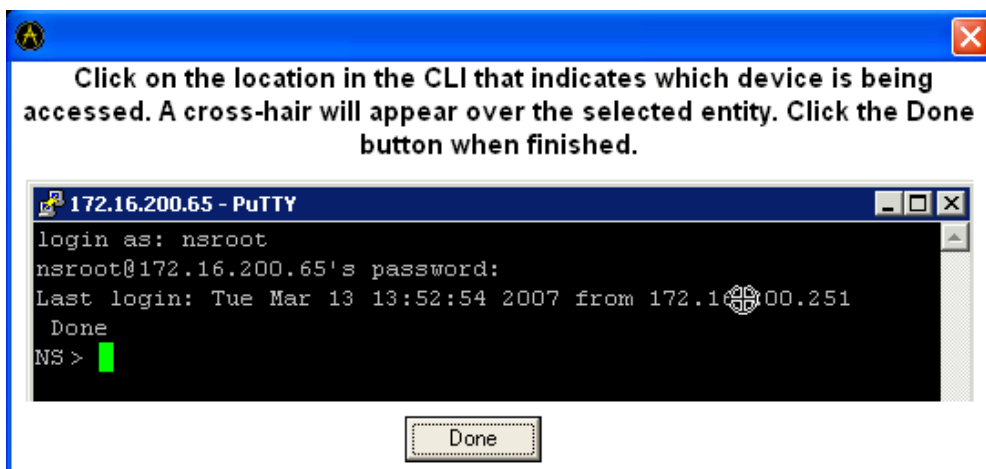
In a point and click item, an image of a configuration screen or network topology is usually displayed. Instructions direct candidates to the element they should select in the item. (As shown in Figure 6.9).

Candidates must click the "Done" button within the task window when finished in order to record their answer(s) and move on to the next item.

6.8 Specialized Indicator in Point and Click Items

When candidates click a spot in a point and click item, a cross-hair will appear on that spot to indicate it has been selected (as shown in Figure 6.9).

Figure 6.9



In this figure, a candidate has selected the spot they believe correctly answers the question. The candidate's chosen spot is indicated by the cross-hair symbol.

6.10 Deselecting a Spot in a Point and Click Item

If a candidate believes he or she has clicked the wrong spot, the candidate can deselect the spot by clicking it again. Once the spot has been deselected, the cross-hair symbol will disappear and they may attempt to answer again.

7 Appendix: Practice

Question 1

Scenario: An administrator enabled session reliability in the LAN within a Citrix XenApp farm. Some users are still connecting to the farm using legacy clients that do **NOT** support session reliability. The network administrator is reviewing a trace and has asked which ports are being used for user connections.

Which two ports are being used for user connections? (Choose two.)

- A. 443
- B. 1494
- C. 2512
- D. 2513
- E. 2598

Correct answers: B and E

Question 2

Scenario: An administrator realizes that a XenApp Web site is **NOT** working properly. There are two other sites on the same Web Interface server that seem to be working fine, so the administrator decides **NOT** to restart the server.

What is the next step the administrator should take to resolve this issue with the least amount of effort?

- A. Edit the client-side proxy settings.
- B. Navigate to the local site tasks and repair the site.
- C. Remove all sites and re-install the Web Interface server.
- D. Delete the site that is not working properly and re-create the site.

Correct answer: B

Question 3

Scenario: Users in the Human Resources department experience long wait times when loading graphics using a published instance of Internet Explorer and Microsoft Outlook.

Which SpeedScreen solution should be configured to lower the resolution of these graphics and optimize the user experience?

- A. Image Acceleration
- B. Progressive Display
- C. Browser Acceleration
- D. Multimedia Acceleration

Correct answer: C

Question 4

Scenario: An administrator created two desktop streaming profiles with two applications for use by two distinct user groups based on Windows XP workstations. Each profile also contains Microsoft Excel and Adobe Acrobat Reader as helper applications. Several weeks after deployment, the administrator learns that the Operations group needs access to applications contained in both profiles based on Windows Vista workstations and that the two distinct user groups will be upgrading to Windows Vista shortly. In addition, going forward, Microsoft Excel macros will need to be updated frequently.

How should the administrator address this requirement?

- A. Deploy the two existing profiles to the Operations group. Create a new profile containing Microsoft Excel and Adobe Acrobat Reader based on Windows Vista and deploy it to all groups.
- B. Create a new profile with all applications based on Windows Vista and deploy it to all three groups. Only enable offline access licensing for those applications that the respective group is authorized.
- C. Create three new profiles: one for each of the two application sets and a dependent profile for Microsoft Excel and Adobe Acrobat Reader, all based on Windows Vista. Deliver the two application sets to the distinct user groups and both application sets to the Operations group, and deploy the dependent profile to all groups.
- D. Create four new profiles: one for each of the two application sets, one for both application sets, and a dependent profile for Microsoft Excel and Adobe Acrobat Reader, all based on Windows Vista. Deliver the two application sets to the distinct user groups and the application set with both applications to the Operations group, and deploy the dependent profile to all groups.

Correct answer: C

Question 5

Scenario: Users connecting to Citrix XenApp outside the corporate network have trouble opening internal web sites. All the sites are unavailable to remote users, while internal users are opening the sites properly.

Which policy rule could be causing this problem?

- A. Mappings
- B. TWAIN redirection
- C. Special folder redirection
- D. Server to client content redirection

Correct answer: D

Question 6

Scenario: An administrator created the following XenApp policies, applied them to groups and ranked them in this order from highest to lowest priority:

- Executives, which specifies that users must be notified and no input is allowed
- Finance, which specifies that users must be notified and input is allowed
- Call Center, which specifies that shadowing is enabled without notification and input is allowed

A user belongs to both the Call Center and Finance groups. During the installation of Citrix XenApp, shadowing was enabled with default settings.

As a result of these policies, this user will be able to be shadowed _____ and have input _____. (Choose the correct pair of options that complete the sentence correctly.)

- A. with notification; enabled
- B. with notification; disabled
- C. without notification; disabled
- D. without notification; enabled

Correct answer: A

Question 7

Scenario: An administrator is creating a custom load evaluator using the Scheduling load evaluator rule to limit access to the applications published within the Citrix XenApp farm. The administrator has created the custom load evaluator, modified the schedule and applied it to all the servers within the farm. Despite the new rule, users are still able to connect to and run the applications outside of the defined schedule.

What is a likely reason for this issue?

- A. All of the servers must be in the same time zone.
- B. The Scheduling rule cannot be the only rule in the load evaluator.
- C. The servers need to be rebooted in order for the rule to take effect.
- D. The Local Host Cache on the server is corrupt and the IMA service should be restarted.

Correct answer: B

Question 8

Scenario: A print driver was installed recently on Citrix XenApp server, Server1. There are 80 Citrix XenApp servers in the farm. The administrator needs to install the driver on all the other servers in the farm and ensure that the driver is installed on all new Citrix XenApp servers added to the farm with minimal configuration. Citrix policies have been configured with the following settings:

- Do not automatically install native drivers
- Use universal driver only if requested driver is unavailable

Which setting could the administrator configure to meet the requirements of the scenario?

- A. Client printers
- B. Auto-replication
- C. Print driver mapping
- D. Print driver compatibility list

Correct answer: B

Question 9

Scenario: Users from the South Service office are connecting to the farm from across a three Megabyte WAN link. The service office is a remote site on the domain with the infrastructure servers including a print server. Users are reporting extended wait times for the network printers to receive the print jobs. There is a policy for the network printers to be connected directly to the network print server.

Which step should the administrator take to enhance printing performance?

- A. Disable the Session Printer policy rule.
- B. Select the Use Universal Print Driver setting in the Universal driver policy rule.
- C. Select the Always connect indirectly as a client printer in the Print job routing rule.
- D. Select the Do not auto-create client printers option in the Auto-creation policy rule.

Correct answer: C

Question 10

Scenario: An administrator just received an alert that IMA Service stopped. After a reboot, the service still would **NOT** start and the administrator suspects that the Local Host Cache must be corrupted on the server.

Which command can the administrator use to address this alert?

- A. `dsmaint verifylhc`
- B. `dsmaint refreshlhc`
- C. `net start imaservice`
- D. `dsmaint recreatelhc`

Correct answer: D

Free Manuals Download Website

<http://myh66.com>

<http://usermanuals.us>

<http://www.somanuals.com>

<http://www.4manuals.cc>

<http://www.manual-lib.com>

<http://www.404manual.com>

<http://www.luxmanual.com>

<http://aubethermostatmanual.com>

Golf course search by state

<http://golfingnear.com>

Email search by domain

<http://emailbydomain.com>

Auto manuals search

<http://auto.somanuals.com>

TV manuals search

<http://tv.somanuals.com>