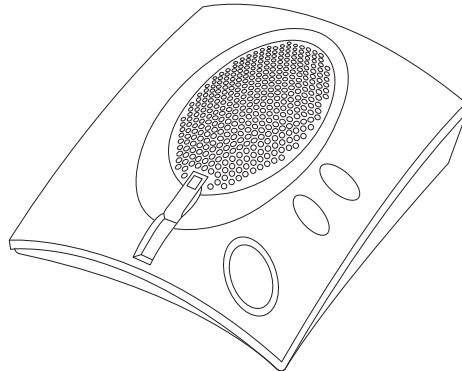


# **ClearOne.**

**CHAT™ 50** Personal Speaker Phone

## QUICK START GUIDE



## CHAT™ 50 Personal Speakerphone

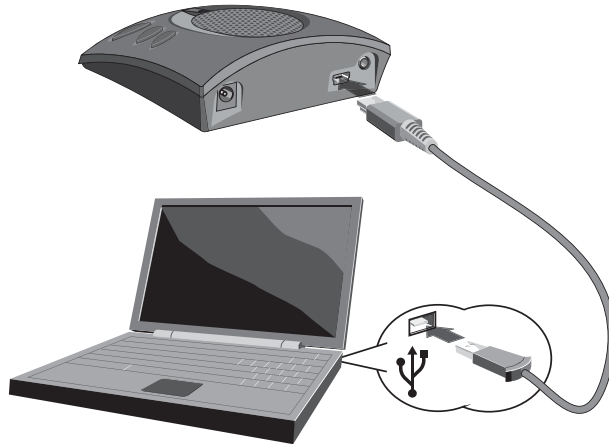
### **INSTALLING THE CHAT 50 SOFTWARE (WINDOWS)**

1. Insert the Chat 50 CD into your computer's CD-ROM/DVD drive.
  - ▶ **Note:** This procedure shows Windows XP screenshots. The installation instruction apply to both Windows XP and Windows Vista. For instructions on installing this software on a Mac, please refer to the Chat 50 User Manual.
2. Follow the instructions in the **Setup Wizard** to complete installation of the Chat 50 software.

## CHAT™ 50 Personal Speakerphone

### CONFIGURING AND TESTING YOUR CHAT 50

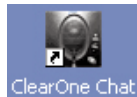
1. Using the included USB 2.0 cable, connect the Chat 50 to your PC (Figure 1.0).



**FIGURE 1.0** Connecting Chat 50 to a PC

## CHAT™ 50 Personal Speakerphone

2. Start the Chat 50 configuration software by double-clicking the **Clearone Chat** icon on your desktop.



ClearOne Chat desktop icon

3. Click the **Device Setup** button.



Chat 50 Device Setup button

## CHAT. 50 Personal Speakerphone

4. Click the type of device you are using with your Chat 50 (Figure 2.0).



FIGURE 2.0 Chat 50 Device Setup: Select 1st column

## CHAT™ 50 Personal Speakerphone

- Click the manufacturer of your device; click **Other** or **All**, if not listed (Figure 3.0).

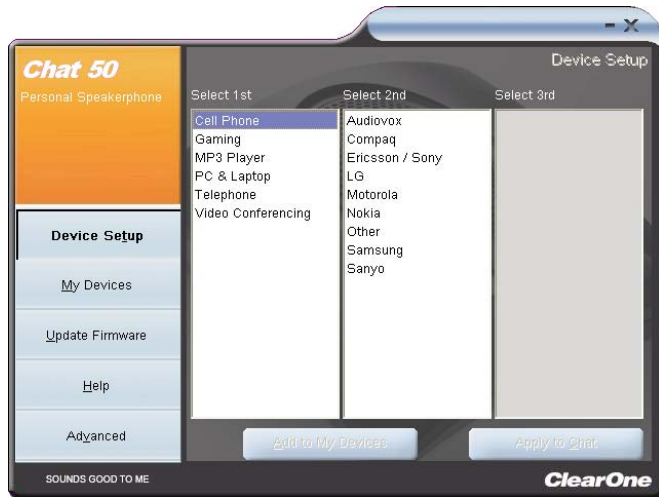


FIGURE 3.0 Chat 50 Device Setup: Select 2nd column

## CHAT. 50 Personal Speakerphone

- Click the model of your device; click **Other** or **All**, if not listed (Figure 4.0).

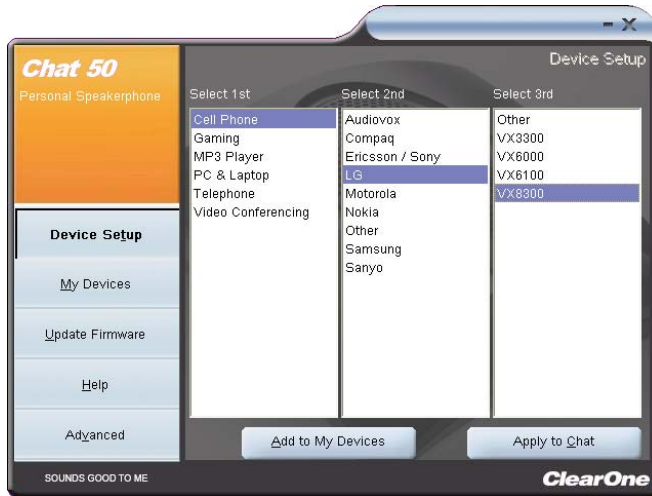
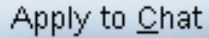


FIGURE 4.0 Chat 50 Device Setup: Select 2nd column

## CHAT™ 50 Personal Speakerphone

7. Click the **Apply to Chat** button to apply these audio settings to your Chat 50.



Apply to Chat

Chat 50 Apply to Chat button

8. Connect your Chat 50 to the device you just configured (see the specific connection picture in the following paragraphs for the connection).
  - ▶ **NOTE:** When connecting to an analog device, you can leave the Chat 50 connected to your PC if you wish. (If you do, then you do not need to connect the power supply because the Chat 50 is being powered through the USB 2.0 cable.)



## CHAT™ 50 Personal Speakerphone

9. To ensure optimal sound quality, you need to customize the Chat 50's audio setting for every application and device you will use. Refer to the tuning procedures in the *Optimizing Sound Quality* section in the user manual.
  
10. If you wish to further adjust the Chat 50 audio settings for this device, refer to the *Chat 50 User's Manual* for more information.

## CHAT™ 50 Personal Speakerphone

### **CONNECTING YOUR CHAT 50**

The following paragraphs show how to connect your Chat 50 to a number of different devices:

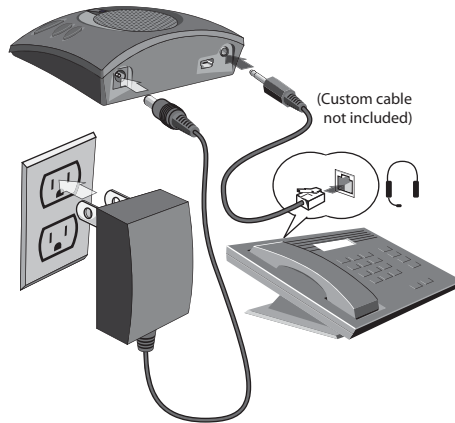
#### **CONNECTING CHAT 50 TO A TELEPHONE**

1. Using the included power supply (USB Plus only), connect the Chat 50 to a power outlet (Figure 5.0).
  
2. Using a ClearOne telephone connection cable (available separately), connect the Chat 50 to your telephone's **headset jack** (or 2.5mm jack) (Figure 5.0).

## CHAT. 50 Personal Speakerphone



**DO NOT** plug the cable into the telephone's line jack as damage to the telephone and/or Chat 50 might occur.



**FIGURE 5.0** Connecting Chat 50 to a telephone

## CHAT™ 50 Personal Speakerphone

### CONNECTING CHAT 50 TO A CELLPHONE

1. Using the included power supply (USB Plus only), connect the Chat 50 to a power outlet (Figure 6.0).
2. Using the included 2.5mm-3.5mm cellphone connection cable, connect the Chat 50 to your cellphone's **headset jack** (or 2.5mm jack) (Figure 6.0).

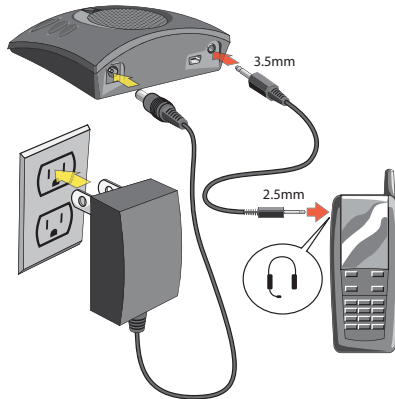


FIGURE 6.0 Connecting Chat 50 to a Cell Phone

## CHAT™ 50 Personal Speakerphone

### CONNECTING CHAT 50 TO AN MP3 PLAYER

1. Using the included power supply (USB Plus only), connect the Chat 50 to a power outlet (Figure 7.0).
2. Using a ClearOne MP3 connection cable (available separately), connect the Chat 50 to your MP3 player's **headset jack** (or 2.5mm jack) (Figure 7.0).

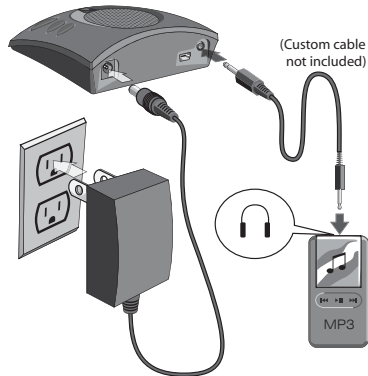
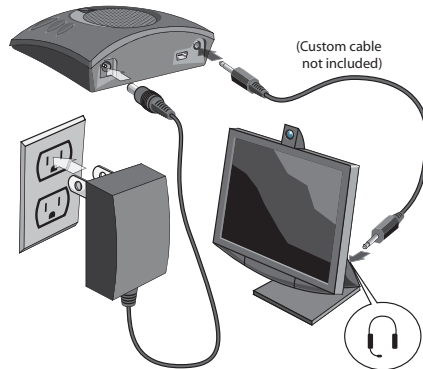


FIGURE 7.0 Connecting Chat 50 to an MP3 player

## CHAT. 50 Personal Speakerphone

### CONNECTING CHAT 50 TO A DESKTOP VIDEO CONFERENCING DEVICE

1. Using the included power supply, connect the Chat 50 to a power outlet (Figure 8.0).
2. Using a ClearOne desktop video conferencing device connection cable (available separately), connect the Chat 50 to your desktop video conferencing device's **headset jack** (or 2.5mm jack)(Figure 8.0).



**FIGURE 8.0** Connecting Chat 50 to a desktop video conferencing device

## **CHAT™ 50** Personal Speakerphone

### **USING THE CHAT 50**

#### **POWER LED INDICATOR**

The power LED indicator lights blue when the Chat 50 is connected to a PC via the USB 2.0 cable or when the power supply is plugged in. The indicator lights red when the Chat 50 microphone mute function is active.

#### **VOLUME UP/DOWN & MUTE BUTTONS**

Use the Volume Up/Down buttons to adjust the volume level of the Chat 50. Use the Mute button to mute the Chat 50's microphone until the Mute button is pressed again. If you are using the Chat 50 with a PC, you can also use the Volume Control in Windows to make these adjustments.







Caution: Read the Safety Information  
in the user manual

### **TECHNICAL SUPPORT**

<b>TELEPHONE</b>	1.800.283.5936 1.801.974.3760
<b>FAX</b>	1.801.977.0087
<b>EMAIL</b>	<a href="mailto:tech.support@clearone.com">tech.support@clearone.com</a>

© 2006 ClearOne Communications, Inc. All rights reserved. Information in this document is subject to change without notice. 800-159-002 Rev. 1.2.

## Free Manuals Download Website

<http://myh66.com>

<http://usermanuals.us>

<http://www.somanuals.com>

<http://www.4manuals.cc>

<http://www.manual-lib.com>

<http://www.404manual.com>

<http://www.luxmanual.com>

<http://aubethermostatmanual.com>

Golf course search by state

<http://golfingnear.com>

Email search by domain

<http://emailbydomain.com>

Auto manuals search

<http://auto.somanuals.com>

TV manuals search

<http://tv.somanuals.com>