

### SteamCraft® Ultra 10 D

TWO COMPARTMENT FLOOR MODEL DESIGN  
PRESSURELESS CONVECTION STEAMER  
DIRECT STEAM, 24" WIDE DESIGN

MODEL:  24-CDP-10

#### Cleveland Standard Features

- Cooking Capacity for up to ten 12" x 20" x 2½" deep Cafeteria Pans.
- **Durable 14 Gauge Stainless Steel Construction:** For compartment door, cavity and front.
- **One 60 Minute Electro-Mechanical Timer and Switch for manual operation.** Audible signal for cooking time completion.
- **Separate Switch for Power "on/off!"**
- **Exclusive Steam Cooking Distribution System:** Exclusive Brass Steam Jets produce a high velocity convection steam without fans. Coved Corner design in cooking compartment distributes heat evenly, and is easy to keep clean. Creased top & bottom enhance drainage. Cold Water Condenser for each compartment maintains a dry steam. Fully insulated cooking compartment for thermal efficiency. Removable Stainless Steel Slide Racks.
- **Exclusive "Cool to the Touch" Compartment Door Design:** Free floating inner door with reversible door gasket provides an air tight seal. Stainless Steel Slam/Latch Door Latch mechanism for reliability.
- **Condensate Drip Trough:** Provided under lower compartment door to collect condensate.
- **Left Hand Door Hinging:** Compartment Doors hinged left, control on the right.
- **Moisture Separator for incoming steam.**
- **Pressure reducing Valve** or 20-50 psi steam supply pressure, based on a ¾" line size.
- **Single Cold water Connection.**
- **NSF Certified 6" Stainless Steel Legs** with adjustable flanged feet for a one inch level adjustment.
- **Standard voltage for controls:** 115 volts, 60 Hz. single phase.
- Clean non-toxic, uncontaminated steam is required for all "Direct Steam" steamers.

#### Options & Accessories

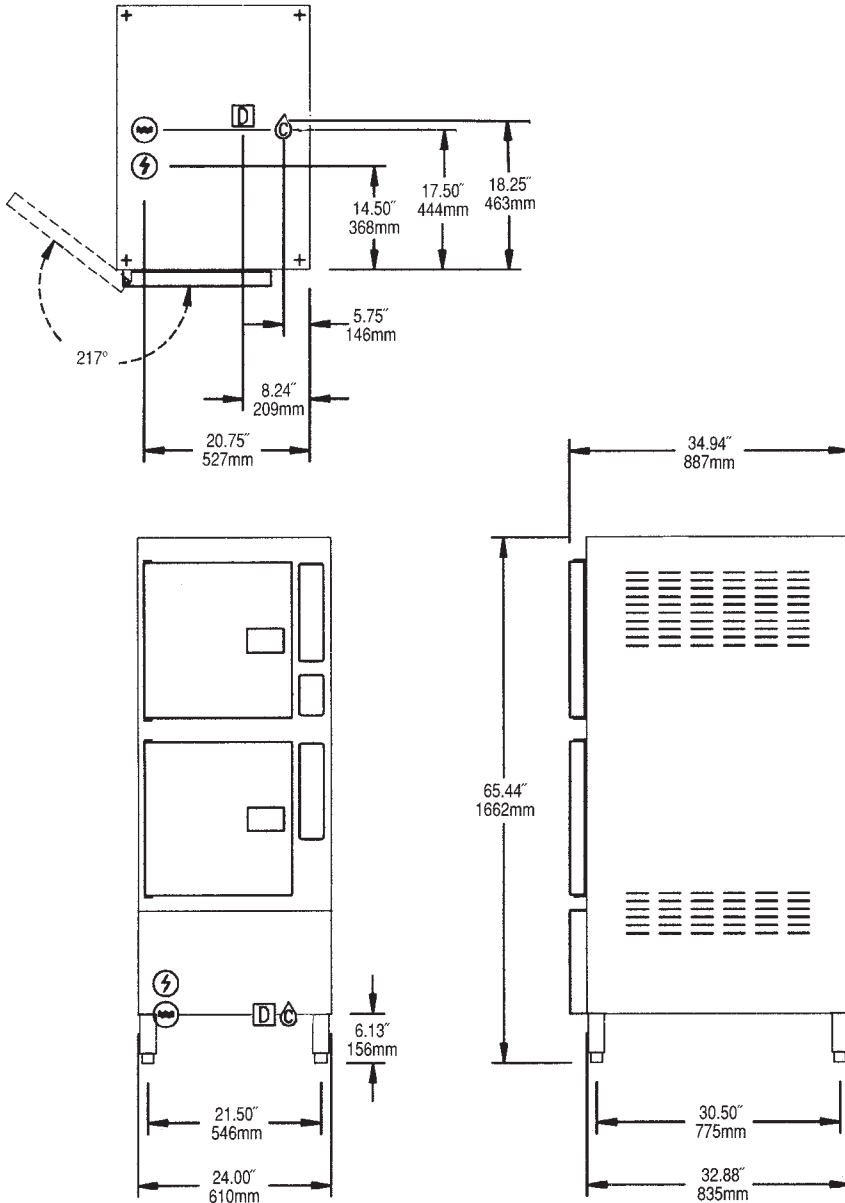
- Second Pressure Reducing Valve for 50-120 psi steam pressure. (PRV)



#### Short Form Specifications

Shall be CLEVELAND, SteamCraft® Ultra 10, two compartments, Direct Steam Floor Model Steamer, Model 24-CDP-10, single, large capacity Pressureless Convection Steamer. Choice of Compartment Controls, Manual By Pass Operation Mode, Compensating Thermostat, Exclusive Cold Water Condenser design, Type 430 Stainless Steel exterior and cooking compartments.

- Right Hand Door Hinging, Controls on the Right (DHR)
- Electronic Timer with Compensating Load Feature (ETC)
- ON/OFF Steam Switch only for compartment controls (MC)
- 10" Stainless Steel Legs (LF10)
- Compartment Door Steam Shut Off Switch (SCS)
- Cafeteria Pans in depths of 1", 2½", 4" and 6"
- Water Filters
- Correctional Packages



Each Compartment has capacity for:

- Five, 12" x 20" x 2½" deep Cafeteria Pans.

**WATER QUALITY REQUIREMENTS**

The quality of water varies greatly from region to region. Steam equipment generators must be drained daily and chemically descaled periodically to ensure proper operation. To minimize service problems caused by the accumulation of minerals and chemicals in water review the following quality guidelines with a local water treatment specialist. Inlet water that is beyond these specified guidelines should be treated to achieve these acceptable limits. Total Dissolved Solids less than 60 ppm, Alkalinity less than 20 ppm, Silica less than 13 ppm, pH factor greater than 7.5, Chlorine less than 30 ppm.

TOTAL CAPACITY (2 Compartments)	UTILITY CONNECTIONS	
10 — 12" x 20" x 2½" Cafeteria Pans or 20 — 12" x 20" x 1" Cafeteria Pans or 6 — 12" x 20" x 4" Cafeteria Pans	(A) Electrical Supply (B) Water Supply for Condenser ¾" Dia. NPT (C) Steam Supply: 0.75" Dia.	(D) Drain: 1.50" Dia.

DIRECT STEAM ○	ELECTRIC ⚡	COLD WATER ☉	DRAINAGE □
Steam supply: Furnish ¾" IPS minimum line. 20 to 50 psi minimum required. For pressures between 50 to 120 psi, on additional Pressure Reducing Valve must be specified.	115V - 1 Phase Controls - 51 Watts	35 psi minimum 60 psi maximum ☉ ¾" Dia. NPT for Condenser	1½" Dia. Do not connect other units to this drain. Drain must not be located beneath the steamer itself. No PVC pipe for drain.

CLEARANCE
Right - 3", Left - 3", Rear - 3" (12" on control side if adjoining wall or equipment is over 30" high for service access) <b>Contact factory for            variances to clearances.</b>

**NOTES:**  
 Cleveland Range reserves right of design improvement or modification, as warranted.  
 Many regional, state and local codes exist and it is the responsibility of the owner and installer to comply with the codes.  
 Cleveland Range equipment is built to comply with applicable standards for manufacturers. Included among those approval agencies are UL, ULC and UL/NSF#4.

## Free Manuals Download Website

<http://myh66.com>

<http://usermanuals.us>

<http://www.somanuals.com>

<http://www.4manuals.cc>

<http://www.manual-lib.com>

<http://www.404manual.com>

<http://www.luxmanual.com>

<http://aubethermostatmanual.com>

Golf course search by state

<http://golfingnear.com>

Email search by domain

<http://emailbydomain.com>

Auto manuals search

<http://auto.somanuals.com>

TV manuals search

<http://tv.somanuals.com>