

Dual 17" LCD Monitor

DoubleSight displays as much data as a single 23-inch LCD monitor!



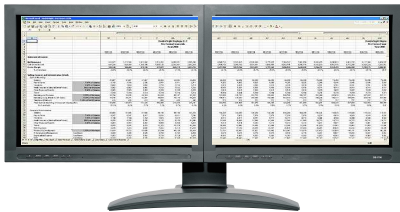
MODEL DS-1700

DoubleSight Dual LCD Display

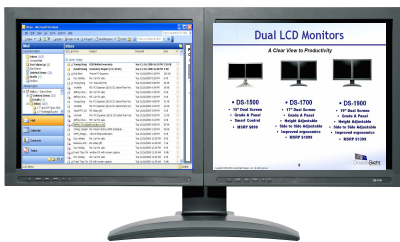
A uniquely designed, multiple LCD display that can increase PC & Mac user productivity up to 50% by managing several sources of information without time-consuming switching between windows!

Office Productivity

You can expand your spreadsheets across TWO screens or view two separate spreadsheets at the same time!



Or multi-task!



Open attachments on one screen while reading email on the other!

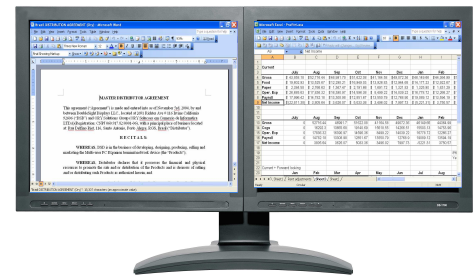
Stock Trading

Stock traders can view stock quotes and performance charts or manage their portfolios on one screen while simultaneously reading relevant articles or reports live on the other screen !



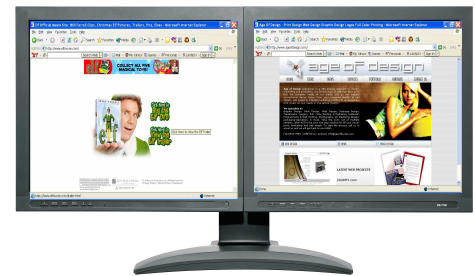
Professional Services

Prepare contracts or other legal documents on one screen and view reference material on the second screen! Easy screen comparisons & uncluttered Windows!



Graphics Design

Great for image editing and desktop publishing! Use main workspace on one display and toolbars/view on the second screen. See TWO pages at once!



Easy to Assemble

You can easily assemble our dual display units within minutes. Unlike our competitors, our display unit is very easy to assemble.

DS-1700 17" Dual LCD Monitor

Product Specifications



Case Color	Black
Panel Type	Dual 17" TFT-LCD
Viewable Area	26.6in horizontal; 10.6in vertical
Resolution	2560 x 1024 max
Response Time	8 ms typ. (Tr+Tf)
Colors	16.2M max.
Brightness	300 cd/m ² typ.
Contrast Ratio	700:1 typ.
Pixel Pitch	0.264mm(H) x 0.264mm(V)
Pixel Configuration	R,G,B vertical stripe
Viewing Angle	-75-+75 horizontal; -75-+60 vertical typ.
Lamp Life	50,000 hours min.
Video Input	Analog 0.7 Vp-p; 75 ohms
Frequency	31-79.98 KHz horizontal; 56-75Hz vertical
Video Connector	Two 15-pin D-sub & Two DVI-D type
Power Voltage	Input: AC 100-240V, 50-60Hz; Output: DC+12V, 3.5A max.
Power Consumption	37W max. typ.; 5W max. standby/suspend/off mode; power management (for each)
Operating Conditions	Temperature 0-+40°C (32-104°F); Humidity 90% max.
User Control	Manual control buttons: POWER, SOURCE, MENU, SELECT, ◀, ▶ On-screen display functions: Select Source, Brightness, Contrast, Color, Position (horizontal/vertical), Image (phase, clock), Misc. Menu (reset, language, OSD position, system info)
Dimensions	31in (W) x 17.8in (H) x 10in (D), with Stand
Weight	30lb (w/ stand)
Tilt/Rotation	-5-+20°(tilt); -10°-0 (left) / -0-10° (right)
Certification	FCC and UL
Warranty	Three year limited warranty (parts and labor).



For further product and sales inquiries, please contact us:

DoubleSight Displays, LLC
2691 Richter Ave # 116
Irvine, CA 92606, U.S.A.

Email: info@doublesight.com
TEL: 1-949-253-1535
FAX: 1-949-253-1537
1-877-896-5237 (1-877-TWOLCDS)

www.doublesight.com

Free Manuals Download Website

<http://myh66.com>

<http://usermanuals.us>

<http://www.somanuals.com>

<http://www.4manuals.cc>

<http://www.manual-lib.com>

<http://www.404manual.com>

<http://www.luxmanual.com>

<http://aubethermostatmanual.com>

Golf course search by state

<http://golfingnear.com>

Email search by domain

<http://emailbydomain.com>

Auto manuals search

<http://auto.somanuals.com>

TV manuals search

<http://tv.somanuals.com>