

Odysey



OWNERS MANUAL & INSTRUCTIONS



12 Harbor Park Drive, Port Washington, NY 11050

Toll Free: 877-224-0946 • 516-998-4600

Website: www.drivemedical.com

Downloaded from www.Somanuals.com. All Manuals Search and Download.

TABLE OF CONTENTS

PREFACE & INTRODUCTION	3
SAFETY NOTICE	4
Before Driving	
While Driving	
Labeling	
EMI	
PARTS INTRODUCTION	10
Parts Description	
OPERATION	11
Control Panel	
How to Operate Your Scooter	
DRIVING ON THE ROAD	15
BATTERY CHARGING AND CARE	17
Charging The Battery	
Charger	
Battery	
INSPECTION AND MAINTENANCE	20
Inspection	
Regular Checking Record	
Battery, Fuse and Tire	
Storage	
Moving About	
DISASSEMBLY AND ASSEMBLY	24
Disassembling The Scooter	
Assembling The Scooter	
TROUBLE SHOOTING & SPECIFICATION	26
WARRANTY	28

PREFACE AND INTRODUCTION

Please carefully read this owner's manual before using the vehicle. Improper use of the vehicle could result in harm, injury or traffic accidents. Therefore for maximum pleasure while using the vehicle please read this owner's manual.

- This owner's manual includes operation instructions for every aspect of the vehicle, assembly instructions, as well as instructions for how to deal with possible accidents.
- The symbols used in this manual are explained below: Read especially the notes marked with these symbols:

WARNING	Improper usage could result in serious injury or death.
ATTENTION	Improper usage could lead to injury and/or damage to your scooter.
SUGGESTION	Follow these instructions to keep your vehicle in a good operating order.

- This manual includes a copy of repair and maintenance record chart and warranty information. Please keep it in a safe place or in the scooter.
- If someone else uses the scooter, please make sure that you provide them with the instruction manual for his or her consideration.
- As designs change some illustrations and pictures in the manual may not correspond to the vehicle that you purchased. We reserve the right to make design modifications.

Our scooters have been designed and manufactured to provide a comfortable and secure yet affordable solution for some mobility requirements.

SUGGESTION

To maximize your batteries efficiency and service life, please fully recharge your new battery before its first time use.

SAFETY NOTICE

Before Driving

The user needs to be familiar with the usage and operation of this vehicle before driving. Therefore, please always keep the following safety notices in mind.

THE SAME TRAFFIC RULES APPLY TO THE USE OF THIS VEHICLE AS APPLY TO PEDESTRIANS

- For your safety, please follow the rules that apply to pedestrians.
- Ride on the pavement and pedestrian areas only, never ride on motorways or dual carriageways. Only use to cross to the other side of the pavement.
- Be aware of traffic when crossing roads.
- Be extremely cautious when driving your scooter on busy streets or in shopping malls.
- Please do not drive your scooter after consuming alcohol or when you are tired.
- Please be careful when driving your scooter in low light. It has not been designed for use at night.

PRACTICE OPERATING YOUR VEHICLE

Before using the scooter in busy or potentially dangerous areas, familiarize yourself with the operation of your scooter. Please practice in a wide and open area like a park. In order to avoid accidents with your scooter while driving, please bare in mind driving motions, such as accelerating, stopping, turning, reversing, up-and down ramps.

- Please turn the speed dial to minimum value for your initial practice.
- Only use higher speed setting when you are confident that you can easily operate and control your scooter.

THE SCOOTER IS ONLY TO BE USED BY ONE PERSON AT A TIME

- Do not carry passengers on your scooter (including children)

DO NOT USE THIS VEHICLE TO CARRY OR HAUL GOODS

- The maximum weight can be carried is 300 lbs. (136 kg) (including occupant and any goods). Refer to “MAX LOAD WEIGHT” in “SPECIFICATION”
- Maximum loading weight for basket is 7lbs.

SAFETY NOTICE

WHILE DRIVING

- Please carry out daily inspections.
- Refer to the section entitled “DAILY CHECKING”
- Do not move your body out of the vehicle while moving
- Such action may cause you to lose balance and risk injury from falling.
- Pay attention that your clothes do not tangle in the wheels.

DO NOT USE YOUR VEHICLE UNDER THE CIRCUMSTANCES BELOW.

- On roads with heavy traffic or roads that are muddy, gravelly, bumpy, narrow, snowed over, icy, or paths not guarded by any fence or hedge. Keep away from places where you might get the wheels stuck.
- Do not drive at night or when it is raining, snowing, misty, or windy.
- Do not drive your vehicle in an “S” pattern or make erratic turnings.
- Do not take the scooter onto escalators.
- UNDER NO CIRCUMSTANCES SHOULD THE SCOOTER BE USED AS A SEAT IN A MOTOR VEHICLE (E.G. CARS, BUSES, TRAINS, ETC).

ABOUT MOBILE PHONES AND OTHER ELECTRICAL EQUIPMENT

- Do not use a mobile phone or other wireless communication devices while driving.
- Always switch off the scooter and remove the ignition key before using a mobile phone.
- Do not charge the mobile phone or any other electrical devices from your scooter’s battery.

AUTOMATIC POWER SHUT DOWN

- In order to avoid accidental battery run down, your scooter is equipped with an automatic power shut down facility. If the scooter is switched on, but remains undisturbed for a period of thirty minutes it will automatically turn off. Should this occur, simply switch your scooter off and back on and it will be ready to use once again.

RAMPS, INCLINES AND DROPS

- Do not drive onto steep ramps greater than the specified gradient. Refer to the section entitled “CLIMBING ANGLE” in “SPECIFICATION”
- Always use a low speed setting when ascending or descending a gradient.
- Do not drive on roads with large drops or potholes. Refer to the section entitled “MAX. GROUND CLEARANCE” in “SPECIFICATION”.
- Do not cross water gutters where the width is too big and where there is a risk of getting the wheels stuck.
- Please slow down when driving on gradients.
- Do not make sudden turns when driving on gravel roads or ramps.
- Always lean forward when climbing a steep gradient.

SAFETY NOTICE

STARTING AND DRIVING

1. Make sure the seat is installed properly.
2. Make sure the tiller has been secured properly.
3. Fold down the armrests so you can rest your arms on them.
4. Turn the power switch to "ON". If necessary, turn on the headlights.
5. Check battery indicator to see whether there is enough power for your journey. If you have any doubt about the remaining power, please recharge the batteries before departure.
6. Set the speed dial to a position you feel safe and comfortable with.
7. Check the forward/reverse speed lever works correctly.
8. Make sure the electromagnetic brake works correctly.
9. Make sure it is safe around you before you drive on the street. Engage the 6mph switch if you are driving on the pavement.

WARNING!

- Do not set in the freewheel mode when driving on a gradient.
- Always re-engage the anti-freewheel device before use. Failure to do so may result in injury.
- To protect your safety, the power will automatically cut off and electromagnetic brake system will activate while you are driving down a steep gradient (over 10°). This will limit the speed to a safe level. Turn the power on again to re-start your scooter.
- **Maximum User Weight Limit**
Refer to section entitled "MAX. LOAD WEIGHT" in "9. SPECIFICATION". Overloading past the weight limit may lead to damage of your scooter or cause it to malfunction and will endanger your safety. The warranty does not cover this type of damage.

ATTENTION

1. Do not push both RH & LH sides of the speed control lever simultaneously. This might leave you unable to control your scooter.
2. Do not turn the power switch to OFF while driving as this will lead to an emergency stop and possible risk of accident and injury.
3. Do not set to the highest speeds while driving indoors.
4. Do not adjust the speed dial while driving, a sudden change in speed may cause danger to you and others, and may cause damage to your scooter.
5. Do not place magnetic devices near the area of the operation handle as this could affect the safe operation of your scooter.
6. Do be careful while driving in heavy traffic or crowded areas.
7. While reversing the vehicle, beware of people or objects behind you.

SAFETY NOTICE

STOPPING

1. Release the speed control lever completely. The vehicle will naturally brake and stop.
2. Turn the power switch to (OFF). Then pull out the key.

LABELING

Please carefully read all labels on the scooter before driving it. For your future reference, do not remove them.

WARNING

- Do not operate the scooter unless the handle bar is in a lock position.
- Do not lean against or pull forward on the handle bar while mounting or dismounting from the scooter. Serious harm or injury can occur.

The manufacturer disclaims all responsibility for any personal injury or property damage which may occur as a result of improper use of its products.



Never lift the scooter up by the shroud

WARNING

Radio waves may affect scooter control.

Radio wave sources, such as radio stations, amateur radio (HAM) transmitters, two-way radios, and cellular phones, can affect powered motorized scooters. Following the warning listed below should reduce the chance of unintended brake release or powered scooter movement which could result in serious injury.

1. Do not turn ON hand-held personal communication devices, such as citizens band (CB) radios and cellular phones, while the powered scooter is turned ON.
2. Be aware of nearby transmitters, such as radio or TV stations, and try to avoid coming close to them.
3. If unintended movement or brake release occurs, turn the powered scooter OFF as soon as it is safe.
4. Be aware that adding accessories or components, or modifying the powered scooter, may make it more susceptible to interference from radio wave sources. (Note: There is no easy way to evaluate their effect on powered scooter.)
5. Report all incidents of unintended movement or brake release to the powered scooter manufacturer, and note whether there is a radio wave source nearby.

SAFETY NOTICE

EMI

This portion of the content will provide the user with basic information that describes the problems with EMI, known sources of EMI, protective measures either to lessen the possibility or exposure or to minimize the degree of exposure, and suggested action should unexpected or erratic movement occur.

CAUTION: It is very important that you read this information regarding the possible effects of electromagnetic interference on your electric SCOOTER.

ELECTROMAGNETIC INTERFERENCE (EMI) FROM RADIO WAVE SOURCES

Powered vehicle may be susceptible to electromagnetic interference (EMI), which is interfering electromagnetic energy (EM) emitted from sources such as radio stations, TV stations, amateur radio (HAM) transmitters, two-way radios, and mobile phones. The interference (from radio wave sources) can cause the powered scooter to release its brakes, move by itself, or move in unintended directions. It can also permanently damage the powered scooter's control system. The intensity of the interfering EM energy can be measured in volts per meter (V/m). Each powered scooter can resist EMI up to a certain intensity. This is called its "immunity level". The higher the immunity level, the greater the protection. At this time, current technology is capable of achieving at least a 20 V/m immunity level, which would provide useful protection from the more common sources of radiated EMI. This powered scooter model as shipped, with no further modification, has an immunity level of 20 V/m without any accessories.

There are a number of sources of relatively intense electromagnetic fields in the everyday environment. Some of these sources are obvious and easy to avoid. Others are not apparent and exposure is unavoidable. However, we believe that by following the warning listed below, your risk to EMI will be minimized.

The sources of radiated EMI can be broadly classified into three types:

1. Hand-held portable transceivers (transmitter-receivers with the antenna mounted directly on the transmitting unit. Examples include: citizens band (CB) radios, "walkie talkie", security, fire, and police transceivers, cellular telephones and other personal communication devices.

NOTE: Some mobile telephones and similar transmit signal while they are ON, even when not being used.

2. Medium-range mobile transceivers, such as those used in police cars, fire trucks, ambulances and taxis. These usually have the antenna mounted on the outside of the vehicle.

SAFETY NOTICE

3. Long-range transmitters and transceivers, such as commercial broadcast transmitter (radio and TV broadcast antenna towers) and amateur (HAM) radios.

NOTE: Other types of hand-held devices, such as cordless phones, laptop computers, AM/FM radios, TV sets, CD player, and cassette players, and small appliances, such as electric shavers and hair dryers, so far as we know, are not likely to cause EMI problems to your powered scooter.

POWERED VEHICLE ELECTROMAGNETIC INTERFERENCE (EMI)

Because EM energy rapidly becomes more intense as one moves closer to the transmitting antenna (source), the EM fields from hand-held radio wave sources (transceivers) are of special concern. It is possible to unintentionally bring high levels of EM energy very close to the control system of powerchair while using these devices. This can affect powered vehicle movement and braking. Therefore, the warnings listed below are recommended to prevent possible interference with the control system of the powered scooter.

WARNINGS

Electromagnetic interference (EMI) from sources such as radio and TV stations, amateur radio (HAM) transmitters, two-way radios, and mobile phones can affect powered scooter and motorized scooter. Following the warnings listed below should reduce the chance of unintended brake release or powered scooter movement, which could result in serious injury.

1. Do not operate hand-held transceivers-receivers), such as citizens band (CB) radios, or turn ON personal communication devices, such as cellular phones, while the powered vehicle is turned ON.
2. Be aware of nearby transmitters, such as radio or TV stations, and try to avoid coming close to them.
3. If unintended movement or brake release occurs, turn the powered vehicle OFF as soon as it is safe.
4. Be aware that adding accessories or components, or modifying the powered vehicle, may make it more susceptible to EMI (Note: There is no easy way to evaluated their effect on the overall immunity of the powered vehicle).
5. Report all incidents of unintended movement or brake release to the powered vehicle manufacturer, and note whether there is a source of EMI nearby.

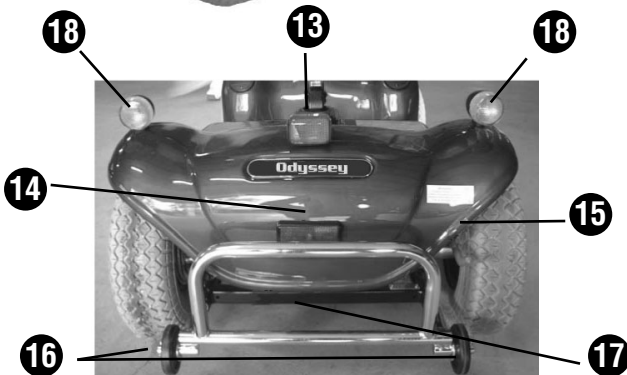
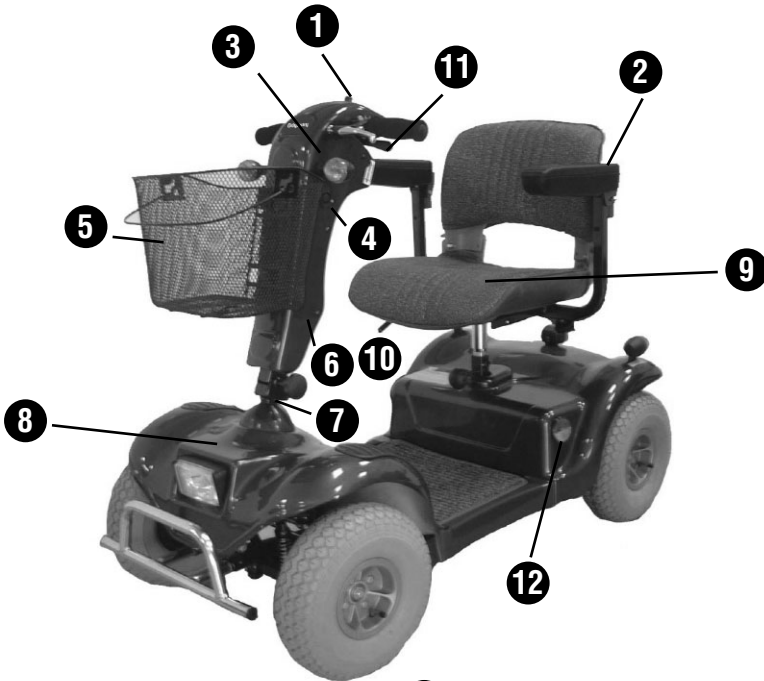
IMPORTANT INFORMATION

1. 20 Volts per meter (V/m) is a generally achievable and useful immunity level against EMI (the higher the level, the greater the protection).
2. This product has an immunity level of 20 V/m without any accessories and connected to it.

PARTS INTRODUCTION

PARTS DESCRIPTION

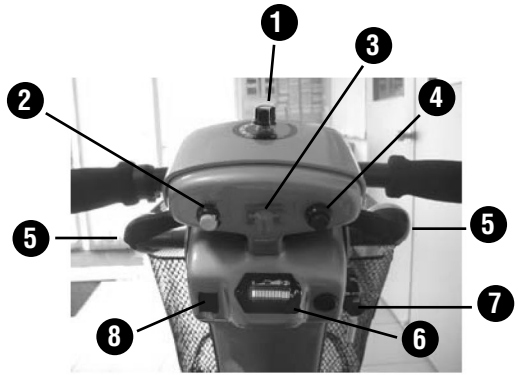
- | | | |
|-------------------------|---------------------------|-------------------------|
| 1. Speed Dial | 7. Tiller Adjustment Knob | 13. Rear Lamp |
| 2. Armrest | 8. Head Lamp | 14. Rear Reflector |
| 3. Front Indicator Lamp | 9. Seat | 15. Freewheel Lever |
| 4. Charger Socket Cover | 10. Seat Rotation Lever | 16. Anti-tip wheels |
| 5. Basket | 11. Hand Brake Lever | 17. Reset Switch |
| 6. Tiller | 12. Side Reflector | 18. Rear Indicator Lamp |



OPERATION

CONTROL PANEL

1. Speed Dial
2. Horn Button
3. Indicator lamp switch
4. Head light / Rear Light Button
5. Speed Control Lever
6. Battery Indicator
7. Power Switch
8. Indoor/Outdoor switch



HOW TO OPERATE YOUR SCOOTER

Power switch

Turn the key to power ON or OFF
(ON) : Power is turned on
(OFF) : Power is turned off



Speed Dial

Turn this dial to determine to the speed range of the scooter.
Turn the dial counter clockwise to go slower and clockwise to go faster.



Forward, Reverse and Braking

- Push the speed control lever forwards with your right thumb and the vehicle will move forward.
- Push the speed control lever backwards with your left thumb and the vehicle will move backward.
- The horn will beep when the vehicle is in reverse.
- Release the speed control lever freely while either going forward or reverse, and the electromagnetic brake in the motor will be activated, and the vehicle will stop.

Indicator Lamp Switch

The light will flash and buzzer will make a beeping sound when turning the switch to the left or right.

- Return the switch back to the middle, the indicator will be cancelled.
- The light will flash and buzzer will make a beeping sound when turning the switch to the left or right.

OPERATION

Horn Button

Press the horn button to sound the horn. Release the button to stop the horn.

Light Button

Push the light button to switch the front and rear lights on. Push the button again to turn the lights off.

Battery Indicator

- When the power switch is turned on the battery indicator will light up with red squares indicating the remaining battery power. The “1” means full power, the “0” means out of power.
- The remaining power indicated by the battery indicator will vary by the actual driving time incurred and how you drive. Repeated starting, stopping, climbing will consume the power more quickly.

SUGGESTION

1. You should recharge the batteries after each time the vehicle is used to ensure maximum range. The batteries should be charged up at least once a week even if the scooter is not used.
2. After charging or replacing a new battery, drive the vehicle for 2-3 minutes to make sure the battery capacity is sufficient.
3. In wintertime, the battery may respond more slowly and the battery range may be reduced.
4. When driving on a gradient, the battery indicator light might move up and down. This is a normal phenomenon so please do not worry.
5. Even if the battery is used properly, it is natural for the battery's capacity to reduce with time, which results in reduced battery range compared to a brand new battery. Therefore, when you find the battery's range is about only 50% of the range when the batteries were new, it is time to replace the batteries. Please see your dealer for replacement batteries. If you continue to use the old battery when it should be replaced, it could lead to a rapid decline in performance.
6. The battery range will be reduced when driving frequently on a slope or rough terrain, as this leads to greater consumption of power.



OPERATION

BRAKING

Electro-magnetic brake: Release the speed control lever completely, and the electromagnetic brake will be activated automatically, and the scooter will stop.

WARNING

When on a gradient NEVER switch the vehicle to the freewheel mode. The electromagnetic brakes will not be applied. This may result in injury.

SEAT

- The seat can be turned to 45 degrees or 90 degrees.
- Push the seat adjustment lever forward and swivel seat.
- Release the lever, then continue swiveling the seat until it locks in position.

ATTENTION

Return the seat to the forward position before driving.

HOW TO ADJUST THE ARMREST WIDTH

Loosen the knobs that secure the back of the seat frame first, then adjust the armrest width by sliding the armrest. Once satisfied with the width, tighten the knob.

HOW TO RE-POSITION THE SEAT

The distance between seat and tiller can be adjusted by repositioning the seat forward or backward. Loosen the four bolts that secure the seat to the seat platform, reposition the seat, then securely retighten the knobs.

HOW TO SET TO FREEWHEEL MODE

- Engaged mode : Lift the lever up completely, the scooter can be driven by motor power.
- Freewheel Mode: Push the lever down completely, the scooter can be moved manually.

TILLER ADJUSTMENT

The Tiller can be adjusted in three positions by following steps.

1. Loosen the knob until adjustment spring can be used. You should now have one to two centimeters of retractable play.
2. Place spring mechanism into your desired position. Ensure the pin locates with a click into place.
3. Once satisfied, ensure hand wheel is fully tightened to maximize safety.



OPERATION

WARNING Please hold the tiller before loosening the tiller adjustment knob. Otherwise a fall from the scooter could occur causing bodily injury and/or damage to scooter.

Manual Brake

As well as an electromagnetic brake, your scooter has a manual cable brake. Squeeze the brake lever to apply the brake and then release the lever to release the brake. The brake cable adjuster near the left hand side wheel can adjust the manual brake tightness.

OPERATING YOUR ODYSSEY

STARTING AND DRIVING

1. Make sure the seat is installed properly.
2. Make sure the tiller has been secured properly.
3. Fold down the armrests so you can rest your arms on them.
4. Turn the power switch to "ON".
5. Check battery indicator to see whether there is enough power for your journey. If you have any doubt about the remaining power, please recharge the batteries before departure.
6. Set the speed dial to a position you feel safe and comfortable with.
7. Check the forward/reverse speed lever works correctly.
8. Make sure the electromagnetic brake works correctly.
9. Before driving, ensure it is safe to do so in the environment around you.

ATTENTION

1. Do not push both RH & LH sides of the speed control lever simultaneously. This might leave you unable to control your scooter.
2. Do not turn the power switch to OFF while driving as this will lead to an emergency stop and possible risk of accident and injury.
3. Do not set to the highest speeds while driving indoors.
4. Do not adjust the speed dial while driving, a sudden change in speed may cause danger to you and others, and may cause damage to your scooter.
5. Do not place magnetic devices near the area of the operation handle as this could affect the safe operation of your scooter.
6. Do be careful while driving in heavy traffic or crowded areas.
7. While reversing the vehicle, beware of people or objects behind you.

STOPPING

1. Release the speed control lever completely. The vehicle will naturally brake and stop.
2. Turn the scooter off at the key. Then pull out the key.

ATTENTION

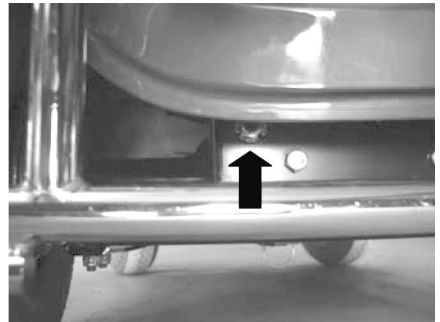
- The stopping distance will vary with your forward / reverse speed. Therefore please begin braking as early as you can.
- While parking your scooter, be sure to park on flat ground and then turn the power to "OFF" before you get off.

OPERATING YOUR ODYSSEY

MAIN CIRCUIT BREAKER (RESET BUTTON)

When the voltage in your scooter's batteries becomes low or the scooter is heavily strained because of excessive loads or steep inclines, the main circuit breaker may trip to protect the motor and electronics from damage.

The location of the circuit breaker is shown by the arrow on the photograph (left).



BATTERY CHARGING AND CARE

CHARGING THE BATTERY

Follow the procedure below step by step:

1. Turn the power switch to (OFF)
2. Connect the charger's power cord into the power outlet.
3. Open the charging socket cap on the scooter's tiller. Then connect the charger's round plug to the charging socket.
4. Turn on the switch on the charger.
5. Both the charger's red and orange LEDs will be lit when charging. The charging duration is about 6 hours. To ensure optimum performance a 10-hour charge is recommended. We do not recommend charging for more than 24 consecutive hours.
6. Both the charger's LEDs will be lit during the charging process. The orange LED will turn green when charging is complete.
7. Turn off the charger; disconnect the power cord and the round plug from charger socket on the scooter.



SUGGESTION

1. Do not disconnect the charger cord if charging is not completed. The battery life will be seriously shortened or decayed if the battery is repeatedly used without being fully charged. Therefore be sure to charge the battery fully every time.
2. Always complete the charging until the orange LED light turns green. NEVER stop charging before it is complete.
3. When fully charged, the battery charger will still trickle charge the battery to ensure optimum range.
4. If you do not use your scooter for a long time, it should be charged at least every week to keep the battery in a fully usable condition.
5. The ambient temperature will affect charging time. Charging time will be longer in the winter.
6. After charging, do not leave the charger socket plugged in to the scooter, as this will cause a power drain on the scooter and temporarily reduce its range.
7. The batteries carry a twelve-month manufacturer's warranty. This warranty only covers issues relating to manufacturing faults, and not faults relating to failure to recharge the batteries as instructed above.

BATTERY CHARGING AND CARE

ATTENTION: Please follow the rules below to avoid accidents while charging.

1. Please use the charger that comes with your scooter only, and recharge the battery to its full capacity every time. You may damage the battery and scooter if you use a charger, which is not to the correct specification.
2. Never disassemble or modify the charger.
3. Please charge in a well-ventilated space where it is not directly exposed to the sunlight. Do not charge in surroundings where it is humid or under rainfall and morning dews.
4. Do not cover with a waterproof cloth or other objects while charging.
5. Do not charge in temperatures less than -10°C (14°F) or higher than $+50^{\circ}\text{C}$ (122°F) as the charger may not work well and the batteries may become damaged.

WARNING

1. Keep away from flammable objects while charging as it may lead to fire or explosion of battery.
2. Do not smoke while charging as the battery may release hydrogen gas. Always charge your battery in a well-ventilated space.
3. Never connect or disconnect the plug or cord with wet hands while charging. Do not connect or disconnect the plug or cord when they are wet, it may lead to electric shock.

NOTE: *The immovable function will be activated while your scooter is in charging status, which will make your scooter not run.*

CHARGER

Both the chargers red and orange LEDs will be switched ON during charging. The orange LED will turn green when charging completed.

WARNING

- The fan inside the charger will be activated accordingly when you turn on the charger. If the fan does not work when connected to the charger or the green light is not showing, DO NOT use this charger. It may lead to overheating of the charger and cause a fire as a result.
- There is a red LED present on the charger to illustrate operation. If this LED does not illuminate the charger is defective, please contact your dealer.

BATTERY CHARGING AND CARE

BATTERY

- Do not expose the battery to temperatures below 50°F or above 122°F when charging or storing the vehicle. Under the above temperature range can cause the battery either to freeze or over heat. This will damage the batteries and shorten their life.
- These batteries are maintenance free and there is no need to refill with water.
- You are required to recharge the batteries on a regular basis. Even if the scooter is left idle, you should charge the batteries at least once a week.

WARNING

Do not open the battery sealed cap at any time.

CLEANING THE BATTERY

If the batteries are contaminated by water, battery acid, dust or other substances, they will discharge quickly. The batteries supplied with your scooter are sealed and as such are maintenance free with no risk of battery leakage. Please follow the steps below to clean the battery.

1. Turn the scooter power switch to "OFF".
2. Remove the seat and dust cover.
3. Remove the shroud and unplug the terminal of the tail light and signal lights.
4. Use a clean cloth to wipe off the soiled area.
5. Take out the battery.
6. Clean the battery with a clean cloth. If the terminal is covered by white powder, please wipe it clean using warm water.

SUGGESTIONS

If necessary, ask for help from your dealer for advice about maintaining and replacing the battery.

SUGGESTIONS

1. Make sure the terminals are installed properly and put the cover back on.
2. Do not use the battery to charge telecom equipment or other items.
3. Battery efficiency will vary with outside conditions; the driving distances will be shorter in the winter. If the vehicle is not used for a long time, please charge the battery at least every week.
4. Replace both batteries together.

INSPECTION AND MAINTENANCE

DAILY CHECKING

Check following items before driving. If you find anything abnormal, contact an authorized dealer for further inspection or advice before using the battery.

ITEM	INSPECTION CONTENT
HANDLEBAR	<ul style="list-style-type: none">• Is there any looseness?• Can it turn left and right smoothly?
SPEED CONTROL DIAL	<ul style="list-style-type: none">• Can it be adjusted freely and does it function well?
SPEED CONTROL LEVER	<ul style="list-style-type: none">• Does the scooter move when the lever pressed down?• Does the scooter stop when the lever is released completely?
MOTOR	<ul style="list-style-type: none">• Is there an abnormal noise coming from the motor?• Do the electromagnetic brakes work properly?
FREEWHEEL MODE	<ul style="list-style-type: none">• Does the freewheel mode lever work properly?
BATTERY INDICATOR	<ul style="list-style-type: none">• Is the light on when the power is switched on?• Is the remaining power enough for your trip?
HORN	<ul style="list-style-type: none">• Does the horn work?
SEAT	<ul style="list-style-type: none">• Can the seat swivel smoothly?
REFLECTOR	<ul style="list-style-type: none">• Is the reflector present and correct?
TIRES	<ul style="list-style-type: none">• Are there any cracks or other damage to the tires?• Check the tire tread depth.
OTHER	<ul style="list-style-type: none">• Are there any abnormal noises?• Is there oil leakage from transmission box?

ATTENTION

Go to your dealer for inspection and maintenance if you find anything wrong.

INSPECTION AND MAINTENANCE

REGULAR CHECKING RECORD

To make sure your scooter is correctly serviced, take it to your dealer for regular maintenance checks. This should be at intervals of six months after the first inspection after one month. Your dealer may charge a fee for this.

SUGGESTION

Even if you don't use the vehicle for a long time it should still be regularly maintained.

YEAR	1	2	3	4	YEAR	1	2	3	4
Service Dates					Service Dates				
Controller					Upholstery				
On/off switch					Seat				
Control Lever					Back				
Braking					Armrests				
Recharge point					Electrics				
Batteries					Connections condition				
Levels					Lights				
Connections					Test run				
Discharge test					Forwards				
Wheels and Tires					Reverse				
Wear					Emergency stop				
Pressure					Left turn				
Bearings					Right turn				
Wheel nuts					Slope test				
Motors					Over obstacles				
Wiring					List Items repaired				
Noise									
Connections									
Brake									
Brushes									
Chassis									
Condition									
Steering									

INSPECTION AND MAINTENANCE

BATTERY, FUSE AND TIRE

BATTERY

Refer to the section entitled “BATTERY” in “BATTERY CHARGING AND CARE ”.

FUSE

If the battery charger is turned on and no LEDs are lit, check the battery charger fuse.

SUGGESTION

Ask for help from your dealer to inspect or replace the fuse, since the tiller shroud has to be removed first before you can replace the fuse.

TIRES

The condition of the tires depends on how you drive and use your scooter.

- Please check the tread depth regularly.
- Replace the tires when the tread depth is less than 0.5mm.

INSPECTION AND MAINTENANCE

ATTENTION

1. When tread depth is below 0.5 cm it can easily lead to vehicle slippage, making braking distances longer. Therefore replace the tires as early as possible when they are found to have insufficient tread depth.

ATTENTION

When conducting maintenance of your vehicle, please turn the power switch to OFF and remove the charger cords.

SUGGESTIONS

- Do not splash water directly to wash your scooter as this could lead to malfunction of the system electrics.
- Do not use gasoline, solvents or vaporizing solution as these may deform or damage the shrouds.
- Do not use wax.

STORAGE

Make sure the scooter is stored under the following condition:

- Ensure the seat is set in the “forward” position.
- Ensure the scooter is switched off.

SUGGESTION

Please store the scooter in a location where it is out of direct sunlight, rain, or dew. When storing for a long time, please charge the battery to full power and then disconnect the battery terminal. For details inquire to your dealer.

TRANSPORTING

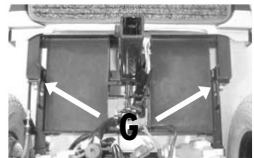
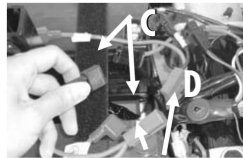
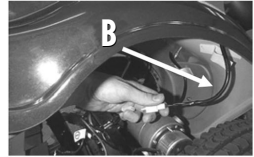
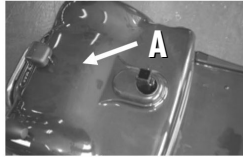
- Switch off the power with the key before moving. Always dismount from the scooter before moving.
- Lift the scooter by the chassis, and not by the bumpers. Lifting the scooters by the bumper could cause damage or injury.
- For your safety, ask for help if required. You will need two people when moving or lifting the scooter whole.

DISASSEMBLY AND ASSEMBLY

DISASSEMBLING THE SCOOTER

The procedures for assembling and disassembling are very similar for the scooters. The following procedure is to disassemble the scooter for transportation:

1. Switch off the scooter at the key ignition.
2. Unscrew the seat hand wheels and remove seat. Be careful with the seat as it is heavy.
3. Lift up the rear shroud (A) and disconnect the rear light loom at the connector (B) and remove the rear shroud completely (as shown in the photograph (B)).
4. Next, Disconnect the batteries by disconnecting the red connector from the red connector (C) and black connector from the black connector (D). Then, undo the hook-and-loop strap (E) and remove the batteries (F). Please see the photographs below.
5. Disconnect the main loom to separate the wiring between the front and rear of the scooter (not shown).
 - a. It is necessary to slacken off the two frame tensioning bolts (G) in order that the locking pin may be removed . Pull up and remove the locking pin (H) and remove the two nuts and bolts, which hold the separate chassis frames together (I). Finally pull the chassis of the scooter apart to separate.



SUGGESTION

The assembly process is essentially the disassembly process in reverse. First study the text and photographs in the disassembly procedure before re-assembly the scooter.

ASSEMBLING THE SCOOTER

1. Push the two halves of the scooter together and reinsert the locking pin, also tightening tension bolts . Reconnect the main loom.
2. Reinstall the batteries and secure them with the hook-and-loop strap.
3. Reconnect the batteries ensuring the two red connectors are together, and the two black connectors are together. **DO NOT CONNECT A RED CONNECTOR TO A BLACK CONNECTOR.**
4. Reconnect the rear light loom and replace the rear shroud and rubber shroud cover.
5. Replace the seat and secure with the knob.

TROUBLE SHOOTING AND SPECIFICATION

TROUBLE SHOOTING AND SPECIFICATION

You can inspect the following before taking you scooter to the dealer.

PROBLEM	REMEDY
SCOOTER WILL NOT SWITCH ON	<ul style="list-style-type: none">• Try recharging the battery• Check the fuse and circuit breaker in the scooter
THE SCOOTER SWITCHES ON, BUT THE SCOOTER WILL NOT MOVE.	<ul style="list-style-type: none">• Ensure there is enough power in the batteries. If not, recharge the batteries.• Ensure the freewheel lever is engaged in the 'DRIVE' position.
THE SCOOTER APPEARS SLOW	<ul style="list-style-type: none">• Check the battery power level and recharge• Check the speed dial is not set to slow.
THE SEAT TURNS WHEN IN OPERATION	<ul style="list-style-type: none">• Slowly rotate the seat until it drops in to place and is secure
THE HANDLEBAR APPEARS LOOSE	<ul style="list-style-type: none">• Tighten the height adjustment handle to secure the handlebar
INVOLUNTARILY HORN SOUNDS	<ul style="list-style-type: none">• Ensure that the wigwag paddle is released.• Switch the scooter off and on.• Recharge the batteries.• If problem persists contact an authorized Drive dealer.

• If you cannot solve the problem by yourself, contact your dealer for help.

SPECIFICATION

MODEL REFERENCE	ODYSSEY
DIMENSION (L X W X H)	55.1" X 26.4 " X 39.8 "
WEIGHT, WITH BATTERY	210 lbs.
WITHOUT BATTERY	162 lbs.
BATTERY	12V 34AH X 2
CHARGER	24V 5A
FRONT TIRE	4.00-5 X 2
REAR TIRE	4.00-5 X 2
DRIVING SYSTEM	Direct drive the rear wheels (with differential gear)
BRAKE SYSTEM	Electromagnetic brakes
CONTROL METHOD	By speed control lever
MAX. SPEED	6MPH
CLIMBING ANGLE	10°
CRUISING RANGE	20 - 25 MILES
MAX. USER WEIGHT (INCLUDING GOODS)	300 LBS.

REMARK: Drive reserves the right to modify the specification if necessary. The final specification is subject to the individual scooter you purchase from your dealer.

NOTE: Maximum driving distance is based on an ambient temperature of 68°F, a 165 lb. driver and a brand new fully charged battery by a constant driving speed at 4mph with 70% battery power discharged.

LIMITED WARRANTY

Life Time Warranty: Scooter frame

We will repair the frame with new or refurbished parts, free of charge, In the USA in the event of defective materials or workmanship.

One Year Limited Warranty:

- Electronic controller
- Drive train components

Drive will repair these products with new or refurbished parts, free of charge, in the U.S.A. for one (1) year from the original date of purchase in the event of defective materials or workmanship.

Excluded from the One Year Limited Warranty are the following items:

- Motor brushes
- Brake pads

Six Month Limited Warranty:

- Plastic parts
- Rubber parts
- Bearings

Other parts not specifically identified above.

Drive will repair these products with new or refurbished parts, free of charge, In the U.S.A. for six (6) months from the original date of purchase in the event of defective materials or workmanship.

LIMITED WARRANTY

Warranty Exclusions

- ABS plastic shrouds
- Batteries (batteries are warranted by the battery manufacturer)
- Tires and Tubes

This warranty is extended only to the original purchaser. Your original receipt will be necessary as proof of purchase before any warranty performance is rendered.

This warranty only covers failures due to defects in materials or workmanship which occur during normal use and does not cover damage that occurs in shipment or failures which are caused by products not supplied by Drive or failures resulting from accident, misuse, abuse, neglect, mishandling, misapplication, alteration, modification, commercial use or by anyone other than an authorized Dealer, or damage that is attributable to acts of God.

The manufacturer reserves the right to alter without notices any weights, measurements or other technical data shown in this manual. All figures, measurements and capacities shown in this manual are approximate and do not constitute specifications.

DRIVE AUTHORIZED SERVICE AGENT

NAME
ADDRESS
TEL
FAX
EMAIL

Warranty Registration

Please type or print

Serial# _____ Date Purchased ___/___/___

Owner Name _____

Address _____

City _____ State _____ Zip _____

Additional Required Owner Information

Please indicate your understanding of your Scooter by completing the following information.

_____ I have read and fully understand

_____ Owners Manual, especially sections on operating instructions, safety guidelines, maintenance and battery instructions.

_____ Scooter Warranty

Battery Instructions-only sealed lead acid or gel cell type batteries should be used. Batteries must also be sealed, deep cycle, and maintenance free or battery will hinder vehicle performance and void the warranty.

_____ My dealer has instructed me on how to operate my Scooter.

Signature _____ Dealer Name _____

Telephone (____) _____ Dealer Phone (____) _____

E-mail address _____

Comments _____

FOLD HERE FIRST

Place
Stamp
Here



Medical Design & Manufacturing

12 Harbor Park Drive
Port Washington, NY 11050

FOLD HERE SECOND



12 Harbor Park Drive, Port Washington, NY 11050

Toll Free: 877-224-0946 • 516-998-4600

Website: www.drivemedical.com

Free Manuals Download Website

<http://myh66.com>

<http://usermanuals.us>

<http://www.somanuals.com>

<http://www.4manuals.cc>

<http://www.manual-lib.com>

<http://www.404manual.com>

<http://www.luxmanual.com>

<http://aubethermostatmanual.com>

Golf course search by state

<http://golfingnear.com>

Email search by domain

<http://emailbydomain.com>

Auto manuals search

<http://auto.somanuals.com>

TV manuals search

<http://tv.somanuals.com>