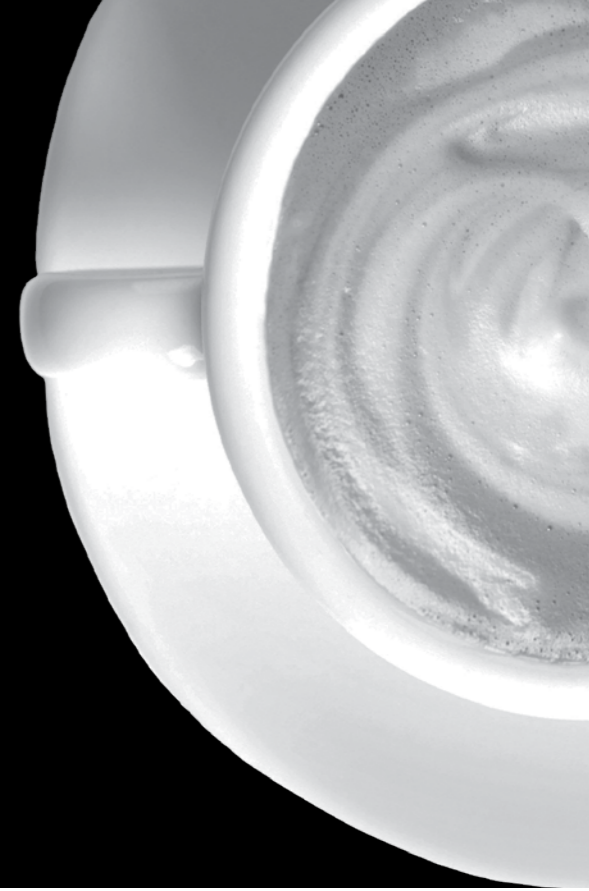




GB0813

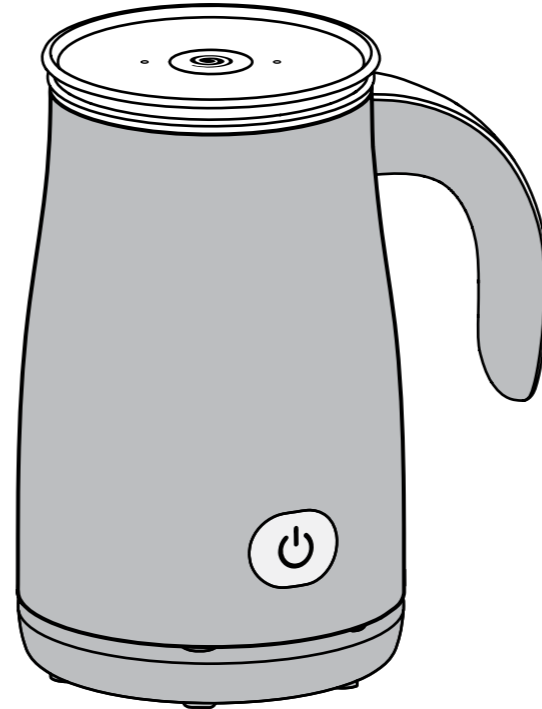


Visit www.dualit.com/coffee to view the full coffee collection



YOUR KITCHEN COFFEE SHOP

Milk Frother Instruction manual



DMF1



DMF2

READ ALL INSTRUCTIONS SAFETY PRECAUTIONS READ ALL INSTRUCTIONS BEFORE USING THE MILK FROTHER.

Keep these instructions for future reference.

- **THIS IS AN ATTENDED APPLIANCE.**
- Do not leave unattended during use, unplug after each use (risk of fire if an unattended appliance is left operating)
- **WARNING:** This appliance must be earthed.
- Do not immerse in water or other liquids. Danger of short-circuiting!
- Never operate damaged appliances (incl. mains cables).
- Do not place the appliance on a polished wood surface, it could damage the wood.
- Never touch live parts.
- Operate appliance only through a professionally installed socket supplying the correct voltage.
- Do not use extension cables.

- Never let main cable hang loose, nor remove plug with wet hands, nor lay or hang on hot surfaces, nor let it come into contact with oils.
- Unplug the appliance from the mains when not in use and before cleaning or maintaining.
- Do not touch the metal parts, the filter holder or its housing when the appliance is in use, as this may cause burns or scalding.
- Do not operate this appliance with a damaged cord or plug. If the supply cord is damaged, it must be replaced by Dualit Ltd, its service agent or similarly qualified person in order to avoid a hazard.
- This appliance conforms to directive 89/336 CEE regarding electromagnetic compatibility.
- This appliance is not intended for use by persons (including children) with reduced physical, sensory or mental capabilities, or lack of experience and knowledge, unless they have been given supervision or instruction concerning use of the appliance by a person responsible for their safety.
- This appliance is intended for household use only. If the appliance is used improperly or for professional or semi-professional purposes or if it is not used according to these instructions the Guarantee becomes invalid and Dualit refuses any liability for damage caused.
- Children should be supervised to ensure they do not play with the milk frother.
- Do not operate outdoors.
- Do not operate with no milk in the jug.
- Turn the appliance and main power off when not in use.

- Never touch rotating parts. Risk of injury!
- By exceeding the filling capacity the jug may overflow.
- Appliance to be used only in conjunction with the base unit provided.
- Never operate appliance on uneven surfaces.
- Use only fire blankets to extinguish fires on appliances.
- The appliance is not designed for commercial or industrial use; it is for household use only.
- Do not insert any objects and/or fingers in the appliance apertures.
- Disable appliances prior to disposal, cut off mains cable and take to an official refuse site.
- The milk frother is designed to heat and froth milk. Do not add flavourings, coffee granules or hot chocolate powder.
- We recommend that the milk frother is plugged into a socket that has no other appliance connected to it. Failure to do this may cause an overload, trip a circuit breaker or blow a fuse. Preferably the socket outlet should be protected by a Residual Current device (RCD).
- **NOTE:** Any plug cut from power supply cord should be disposed of immediately. Inserting any cut off plug into a 13A socket outlet is dangerous.
- Never use the plug without the fuse cover fitted. Ensure replacement fuse is the same current value as original.
- Replacement fuses should be ASTA approved to BS 1362.

IMPORTANT SAFETY PRECAUTIONS

BEFORE FIRST USE

- Unpack the box with care, keeping all the packaging materials until you are satisfied everything is present and in working order.
 - Once satisfied recycle the packaging appropriately.
 - Rinse whisk, lid and inside jug and wipe clean before first use.
- In the interest of improving products, Dualit Ltd. reserves the right to change the product specification without prior notice.

INSTRUCTIONS ON ENVIRONMENT PROTECTION

Do not dispose this product in the usual household garbage at the end of its life cycle. Please hand it over to a collection point for the recycling of electrical and electronic appliances. The symbol on the product, the instruction of use or the packaging will inform you about the methods of disposal.



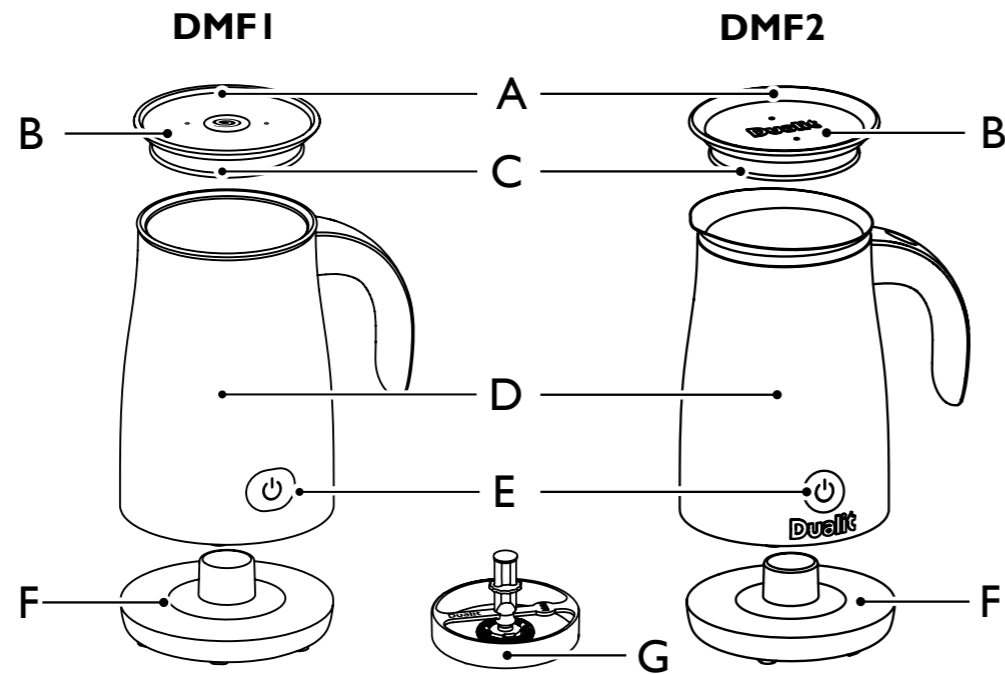
The materials are recyclable as mentioned on its marking. By recycling, material recycling or other forms of re-utilization of old appliances you are making an important contribution to protect our environment.

Please inquire at the community administration for the authorised disposal location.

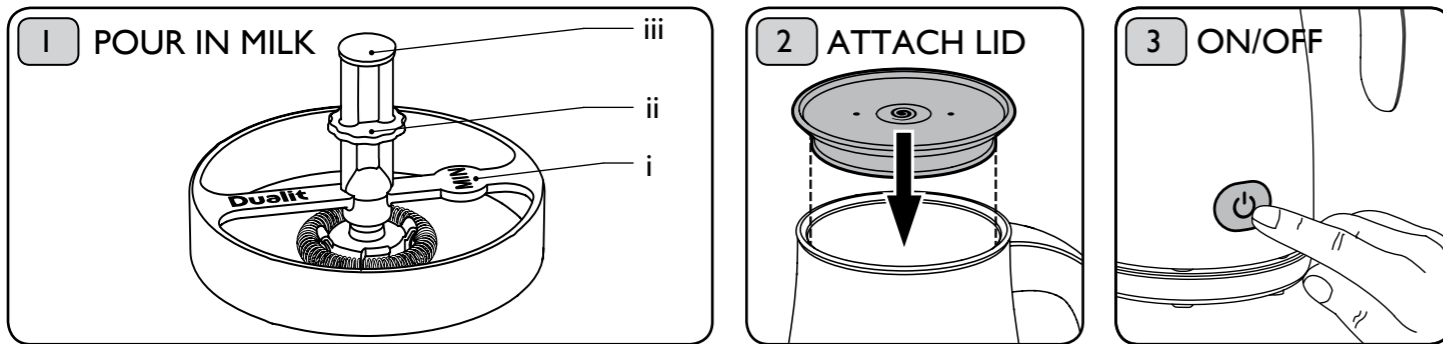


KNOW YOUR MILK FROTHER

- A. LID
- B. VENTILATION HOLES
- C. SEAL
- D. CORDLESS JUG
- E. POWER BUTTON
- F. POWERBASE
- G. WHISK



USING YOUR MILK FROTHER



Pour milk into the jug. For heated milk fill between the minimum mark (i) and max mark (iii). For hot frothed milk fill between the minimum mark (i) and max mark (ii).

For cold frothed milk fill between the minimum mark (i) and max mark (ii).

Align the lid on the jug as shown then push down to close.

Press the power button to select your required function. Allow the heating cycle to finish before lifting off the power base.

FUNCTIONS

FUNCTION	ACTION	ILLUMINATION
HOT FROTHED MILK	Press power button once	Solid red
HEATED MILK	Press power button twice	Flashing red
MANUAL TURN OFF	Press power button once Remove jug from the base	Off
*COLD FROTHED MILK	Press and hold power button for 2.5 seconds	Solid blue
MANUAL TURN OFF	Remove jug from the base	Off
AUTO TURN OFF	At the end of the cycle the milk frother will automatically turn off	Off

*NB. Cold milk mode can not be selected once hot function is operating. Lift up to turn off. Allow to cool then press and hold for cold function.

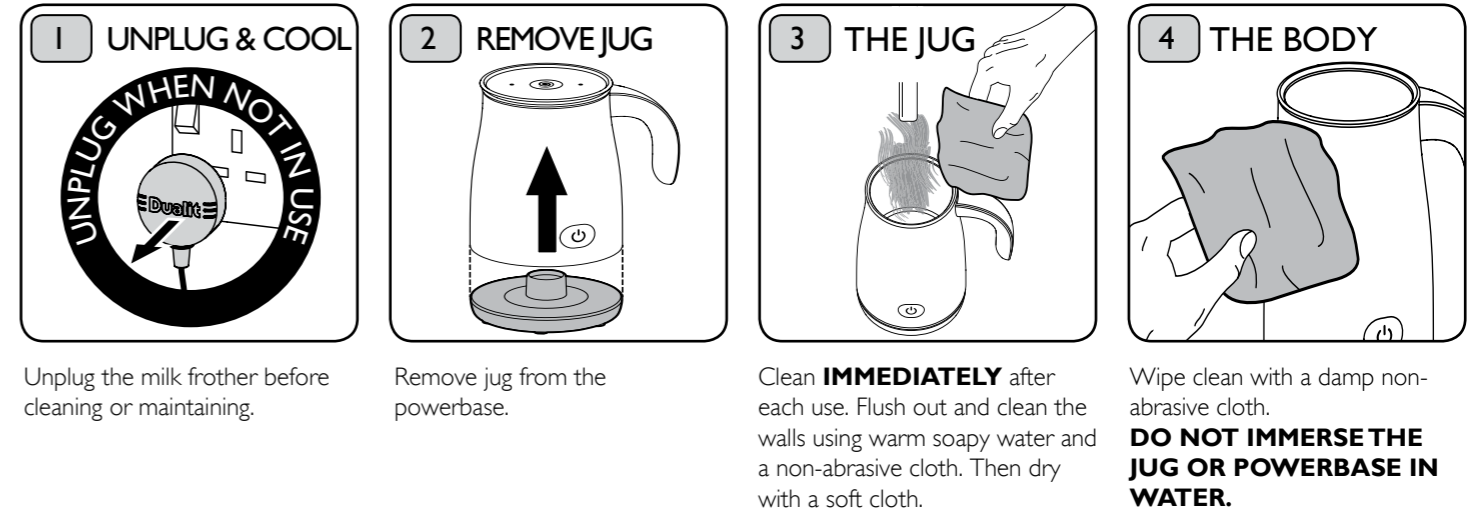
CLEAN AFTER EACH USE. Before making the next round of milk wait approximately 2 minutes.



Download from www.Somanuals.com. All Manuals Search And Download.

CLEANING AND CARE

FAILURE TO CLEAN YOUR MILK FROTHER AS PER INSTRUCTIONS WILL INVALIDATE YOUR GUARANTEE.



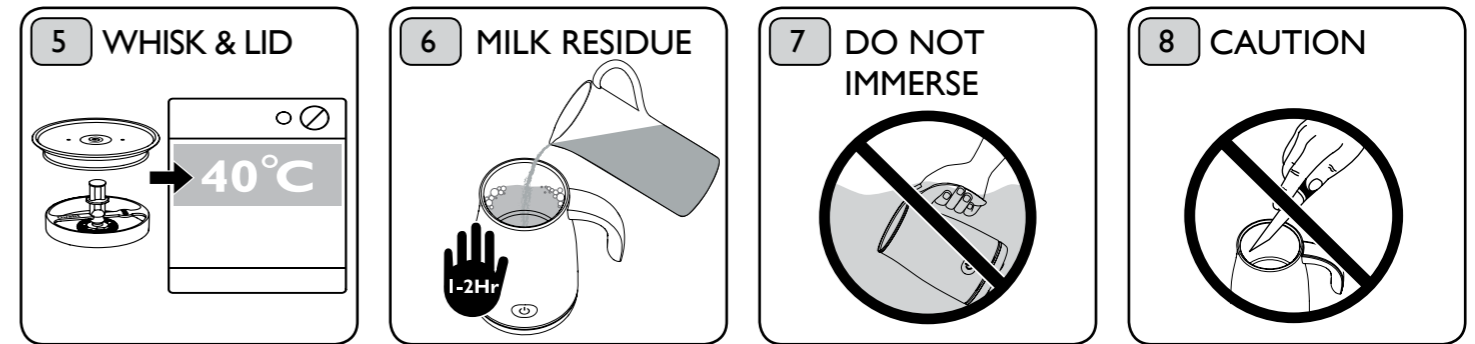
Unplug the milk frother before cleaning or maintaining.

Remove jug from the powerbase.

Clean **IMMEDIATELY** after each use. Flush out and clean the walls using warm soapy water and a non-abrasive cloth. Then dry with a soft cloth.

Wipe clean with a damp non-abrasive cloth. **DO NOT IMMERSE THE JUG OR POWERBASE IN WATER.**

CLEANING AND CARE CONTINUED



Remove whisk from the jug. The whisk and lid are suitable for dishwasher use. Use a wash cycle below 40°C and place on the top shelf. Remove prior to drying cycle. Ensure the ventilation holes on the lid are unblocked and the seal clean.

A layer of milk may be left in the bottom of the jug. Leave warm soapy water in the jug to soak for 1-2hrs, then wipe off with a non-abrasive cloth.

Never immerse or partially immerse the jug or power base in water. Wipe clean with damp non-abrasive cloth.

Never use sharp objects or an abrasive scourer pad: it will damage the non-stick coating.

HINTS AND TIPS

- Use cold semi-skimmed or UHT milk for best results. The milk frother works best with milk that has a high protein level. Full fat milk will not froth well (fat content >3.0%). Remember different milks froth at different rates.
- After frothing or heating allow approximately 2 minutes for the thermostat to reset and the milk frother to be ready for use again. To shorten this time, rinse with cold water and wipe dry after each use.
- The milk frother is designed to heat and froth milk. Do not add flavourings, coffee granules or hot chocolate powder.
- Use frothed milk for making cappuccino, latte macchiato, instant frothy coffee.
- Use heated milk for making caffè latte, hot chocolate, instant milky coffee.
- Use cold frothed milk for making milkshakes.

Free Manuals Download Website

<http://myh66.com>

<http://usermanuals.us>

<http://www.somanuals.com>

<http://www.4manuals.cc>

<http://www.manual-lib.com>

<http://www.404manual.com>

<http://www.luxmanual.com>

<http://aubethermostatmanual.com>

Golf course search by state

<http://golfingnear.com>

Email search by domain

<http://emailbydomain.com>

Auto manuals search

<http://auto.somanuals.com>

TV manuals search

<http://tv.somanuals.com>