



DYMO[®] DiscPainter[™]

CD/DVD Printer User Guide



Copyright

© 2007 Sanford, L.P. All rights reserved. Version 1.0 Revised 7/07.

No part of this document or the software may be reproduced or transmitted in any form or by any means or translated into another language without the prior written consent of Sanford, L.P.

Trademarks

DYMO and DiscPainter are registered trademarks of Sanford, L.P. All other trademarks are the property of their respective holders.

Contents

Introduction	1
Printer Overview and Features.....	1
System Requirements.....	1
Mac OS System Requirements.....	1
Windows System Requirements.....	1
Your Printer at a Glance.....	2
About Discus for DYMO Software.....	2
Important Notes.....	2
For More Information.....	3
Working with Discs	5
About Printable CDs/DVDs.....	5
Loading Discs.....	6
Caring for Discs.....	7
Printing from Mac OS	9
Controlling Printer Features.....	9
Controlling Print Quality.....	10
Controlling Ink Density.....	10
Controlling Disc Settings.....	11
Printing Multiple Copies.....	13
Printing to the DiscPainter Printer.....	13
Using Sample Files.....	13
General Printing Instructions.....	14
Printing From Windows	15
About the DiscPainter Status Monitor.....	15
Controlling Print Options.....	16
Controlling Print Quality/Speed.....	17
Controlling Ink Density.....	18
Controlling Disc Settings.....	18
Restoring Default Settings.....	19
Printing Multiple Copies.....	19
Printing to the DiscPainter Printer.....	19
Using Sample Files.....	20
General Printing Instructions.....	21

Caring for Your Printer	23
Handling Inkjet Cartridges	23
Using Printer Services	23
Checking the Ink Level	24
Cleaning the Inkjet Cartridge	25
Purchasing New Inkjet Cartridges	25
Replacing the Inkjet Cartridge	25
Cleaning the Printer	27
Repacking the Printer for Travel	27
Printing Over a Network	31
Printing to a Shared Printer from Mac OS	31
Sharing a Printer on a Network	31
Adding a Shared Printer	32
Printing to a Shared Printer from Windows	33
Sharing a Printer on a Network	33
Installing a Network Printer	34
Frequently Asked Questions	35
Troubleshooting	39
Installation Problems	39
Windows Installation Problems	39
Mac OS Installation Problems	39
Printing Problems	40
Error Messages	40
Printer Status Lights	41
Ink Level Appears Empty	41
Printing is Too Light or Dark	41
Smudges Appear Outside of Design	41
Ink Pools on Disc	41
Printing a Self-Test	41
Opening the Front Cover	42
Printer Specifications	45
Physical Specifications	45
Power Specifications	45
Disc Service, Duty Cycle, and Warranty Specifications	45
Environmental Specifications	45
Declaration of Conformity	46
Waste from Electric & Electronic Equipment (WEEE)	46
Limited Warranty	46
Index	49

Chapter 1

Introduction

This chapter introduces the DYMO DiscPainter printer and covers the following topics:

- Printer overview and features
- System requirements
- DiscPainter printer at a glance
- Important notes for printing on discs
- Road map for finding more information

Printer Overview and Features

The DiscPainter CD/DVD printer is a color inkjet printer that prints high-quality graphics, text, and images directly onto inkjet-printable CDs and DVDs with ease and accuracy. Set up is quick and easy, and can be accomplished in just a few minutes. Regardless of your content (music, video, or data), you can print attractive, professional-looking text and graphics on discs without using clumsy adhesive labels.

Below are some of the printer's most important features:

- Prints clear, attractive designs onto the printable side of CDs and DVDs
- Prints high-resolution, color text and images using RadialPrint™ Technology (up to 1200 dpi)
- Prints on 120 mm and 80 mm inkjet-printable discs
- Supports full-coverage (hub-printable) discs
- Includes Discus for DYMO software so that you can create your own custom designs

System Requirements

The DiscPainter printer system requirements are as follows:

Mac OS System Requirements

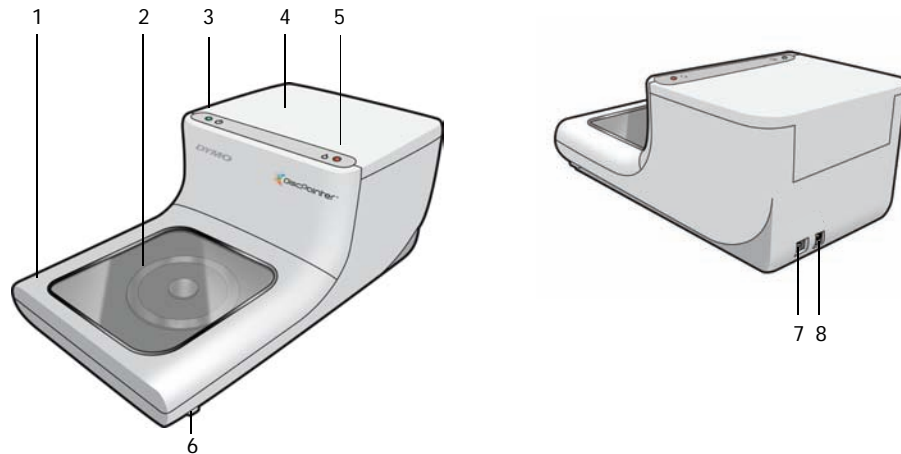
- Mac OS® v10.3/10.4
- 512 MB RAM
- USB port (USB 2.0 certified high-speed device works with USB 1.1)
- 700 MB hard disk space

Windows System Requirements

- Windows® XP
- 512 MB RAM
- USB port (USB 2.0 certified high-speed device works with USB 1.1)
- 700 MB hard disk space

Your Printer at a Glance

These drawings show the front and back of the printer. The numbers in the illustrations correspond to the printer part names listed below the figure.



1	Front cover
2	Disc tray
3	Power status (see "Printer Status Lights" on page 41 for information)
4	Top cover
5	Ink status (see "Printer Status Lights" on page 41 for information)
6	Front cover release levers (see "Opening the Front Cover" on page 42 for information)
7	USB connection
8	Power connector

About Discus for DYMO Software

Included with your new printer is Discus for DYMO software. Discus for DYMO software is a powerful application that allows you to create professional looking CD/DVD designs with a minimum amount of effort. In addition to printing disc designs on the DiscPainter printer, you can design and print jewel case covers and inserts, and other types of projects on a standard inkjet printer. Refer to the *Discus for DYMO Online Help* for complete information.

You can also print to the DiscPainter printer from other design applications, such as Adobe® Photoshop® or Illustrator®. See "Printing to the DiscPainter Printer" on page 19.

Important Notes

Below are some things to keep in mind when printing.

- Use only inkjet-printable discs. These usually have a white printing surface. Inkjet-printable discs are available from your local office supply retailer or online at www.dymo.com.

- Only use DYMO-branded inkjet cartridges.
- Do not open the top cover or front cover during printing.
- After printing, wait for the ink to dry completely before touching the disc to avoid smearing the ink and handle the discs only by the edges.

For More Information

The table below provides a *road map* to all the DiscPainter-related instructional information.

Information	Location/How to Access
<i>Quick Start Guide</i>	Included in product package.
<i>DiscPainter Printer User Guide</i>	Provides complete instructions for using the printer. Mac OS: Located in the DiscPainter application folder or the Help menu in the Discus for DYMO software. Windows: Accessed from the Start menu on the Windows desktop or the Help menu in the Discus for DYMO software.
<i>Discus for DYMO Online Help</i>	Provides complete information about the Discus for DYMO software. Mac OS: Accessed from the Help menu in the Discus for DYMO software. Windows: Accessed from the Start menu on the Windows desktop or the Help menu in the Discus for DYMO software.
DiscPainter Web site	Use a Web browser to go to: www.dymo.com/discpainter Complete information about DiscPainter, including the most recent versions of the software and this User Guide, are available on the DiscPainter Web site .

Chapter 2

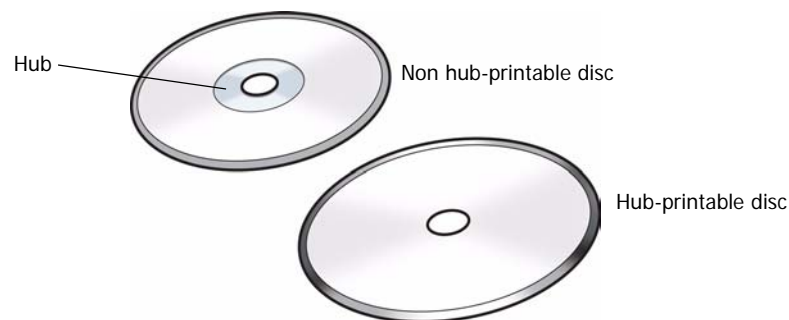
Working with Discs

This chapter describes how the DiscPainter printer works with inkjet-printable discs.

About Printable CDs/DVDs

Inkjet-printable CDs and DVDs are available in two basic sizes (diameters): Standard size (120 mm) and Mini size (80 mm).

Inkjet-printable discs can be hub-printable (also called *full face* or *full coverage*) or non hub-printable. Hub-printable discs allow you to print close to the inner edge of the center hole, while non hub-printable discs have a larger unprintable area at the center of the disc.



Note The printer does not support printing on business card discs.

Inkjet-printable discs are available with a variety of surface finishes, which are described below.

Disc Surface Finish	Characteristics
Matte	Dull, flat, non-glossy
Glossy	Lustrous, shiny
Silver or Color	Reflective, mirror-like. Red, blue, green and other colors are also available.
Water-resistant/ Water-proof	Resistant to smearing and color bleeding from contact with liquids.

Note Different disc finishes require different ink densities (the amount of ink deposited by the printer) in order to optimize print quality. You can adjust the ink density for the various types of disc finishes. See "Controlling Ink Density" on page 10 (Mac OS) or page 18 (Windows) for information.

Drying Time

Drying times will vary based on the disc type and ink density used. Most discs should dry within seconds; however, depending on ink density, some discs may require much longer to dry. In general, do not touch the printed surface until you are sure it is dry and only handle the disc by holding the edge.

Note The printer is designed to print only on inkjet-printable discs. If you print onto discs that are not inkjet-printable, the ink will not dry correctly and may pool. Not using inkjet-printable discs may damage your printer.

Designs containing large amounts of black color may be damp after printing. To avoid this, reduce the amount of black in the design.

Loading Discs

Keep the following important points in mind when loading discs into the printer:

- Never remove a disc during printing (while it is spinning). Always wait for the disc to stop spinning. The ink status light will blink yellow, which indicates that the disc is finished printing.
- Avoid touching the bottom part of the disc. Always handle the disc by its outer edge. You can also support the disc by inserting a finger through its center hole.
- Always use an inkjet-printable disc.
- Before printing, make sure the disc size and other characteristics (finish, hub printable/non-hub printable, and so on) match the settings defined for the printer. See "Controlling Print Quality/Speed" on page 17 for information on controlling the printer.
- Make sure you insert the disc with the printable surface *facing up*. The printable surface is typically white, but can also be silver, red, blue, green, or other colors, depending on the disc's finish. See "About Printable CDs/DVDs" on page 5 for information.

To load a disc into the printer

- 1 Carefully raise the front cover to its upright position.
The ink status light on top of the printer blinks yellow.
- 2 If another disc is already on the disc tray, remove the disc, touching the disc only on the outer edges.
- 3 Place the blank disc onto the center spindle in the disc tray with the printable side up.



- 4 Carefully lower the front cover.
The Ink LED stops blinking. This indicates that you are ready to print on the disc.

Caring for Discs

This section contains information on how to care for your discs.

Keep the following tips in mind:

- Always place discs back in their protective covers when not in use.
- Make sure the printing is completely dry before inserting a disc into its cover. If you are not sure the ink is completely dry, leave the disc to set overnight.

To clean the printable side of a disc

- ◆ Using a clean, dry, lint-free cloth, gently wipe off the disc.

Note Avoid getting moisture on the printable surface of the disc. Moisture can smear the ink.

Chapter 3

Printing from Mac OS

The chapter describes how to print on a DYMO DiscPainter printer from Mac OS and covers the following topics:

- Controlling printer features
- Printing from other software

Note See "Using Printer Services" on page 23 for information about using printer services from Mac OS or Windows.

Controlling Printer Features

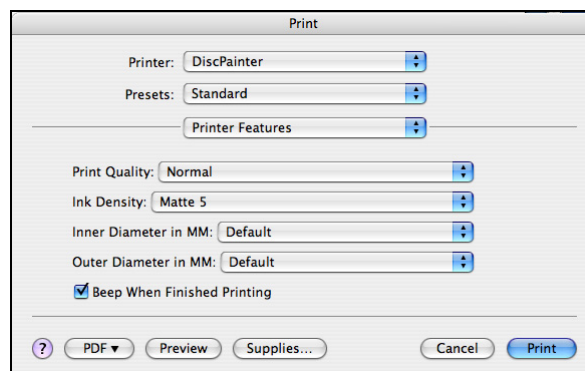
You can control several printer features for your DYMO DiscPainter printer, including:

- Print quality
- Ink density
- Inner and outer diameter

Note This section describes how to define print options when using your DiscPainter printer with other applications. For information on using the printer with the Discus for DYMO software, see the *Discus for DYMO Online Help*.

To control printer features

- 1 From any application that supports printing, select **Print** from the **File** menu. The Print dialog box is displayed.
- 2 Select **DiscPainter** from the **Printer** menu.
- 3 Select **Printer Features** from the menu below the **Presets** menu. The Printer Features properties are displayed.



- 4 Make any necessary adjustments to the settings. The settings are described in detail in this chapter.
- 5 When you are finished selecting printer features, click **Print**.

Controlling Print Quality

You can choose from several print quality options. In general, higher quality print requires longer print times. Print speed depends on many factors: the amount of computer memory you have, the complexity of your design, the number of colors in your design, and so on.

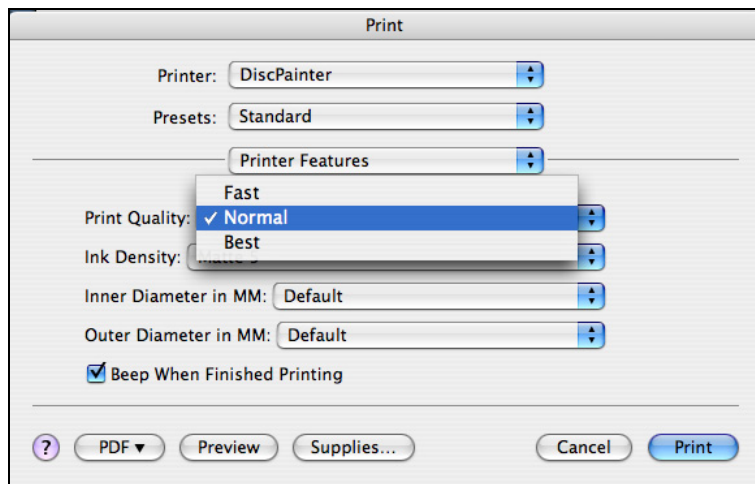
The Print Quality options are described below.

Print Quality /Speed Option	Description
Fast	Uses image smoothing and halftoning to produce full-color print quality.
Normal	Produces full-color print quality superior to Fast mode; the resulting image is suitable for most applications. Images require about twice as long to print as in Fast mode.
Best	Produces the best full-color print quality available. Images require about twice as long to print as in Normal mode.

Note The print time mentioned above is measured from the time the print tray moves into printing position.

To select a Print Quality option

- ◆ From the Print dialog box, select the quality you want from the **Print Quality** drop-down list.



Controlling Ink Density

You can easily adjust the density of the ink printed on discs. Less ink results in images that are less dense; more ink results in denser images. In general, the disc's finish (matte, glossy, silver, and so on) determines the ink density you should use. See "About Printable CDs/DVDs" on page 5 for details about the various types of printable discs.

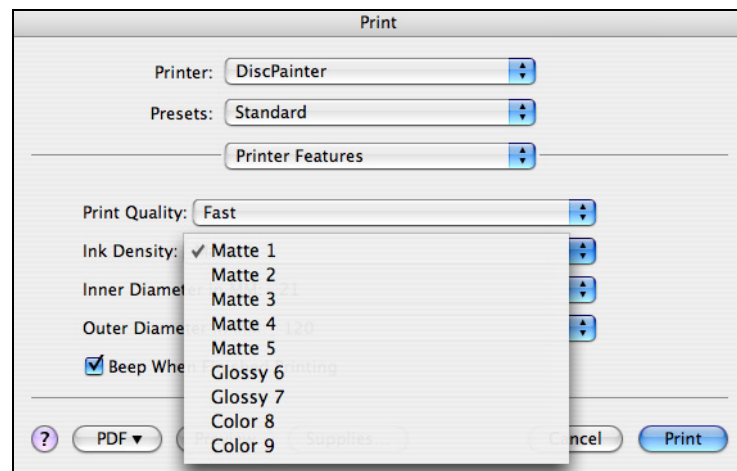
The Ink Density control on the DiscPainter Properties dialog box has nine settings.

Setting	Description
Matte 1 - 5	Uses less ink and printed image is less dense. Recommended setting for inkjet-printable discs with a matte finish. Default setting is Matte 5.
Glossy 6 - 7	Uses slightly more ink than the matte settings. Recommended setting for inkjet-printable discs with a glossy finish.
Color 8 - 9	Uses more ink and printed image is more dense. Recommended setting for inkjet-printable discs with a silver or color finish.

Experiment with the settings to see what works best for your inkjet-printable media.

To select the ink density

- ◆ From the Print dialog box, select the setting that you want to use from the **Ink Density** drop-down list.



You might find that you prefer settings other than those recommended. Select a finish (matte, glossy, or color) that matches your disc. If the results are not what you expected, try printing with a different ink density setting.

Controlling Disc Settings

As with any other printer, the paper size selected determines the area to be printed. Before printing, you must make sure that the Paper Size selected matches the disc that you are going to print on. Four paper sizes are pre-defined for the printer:

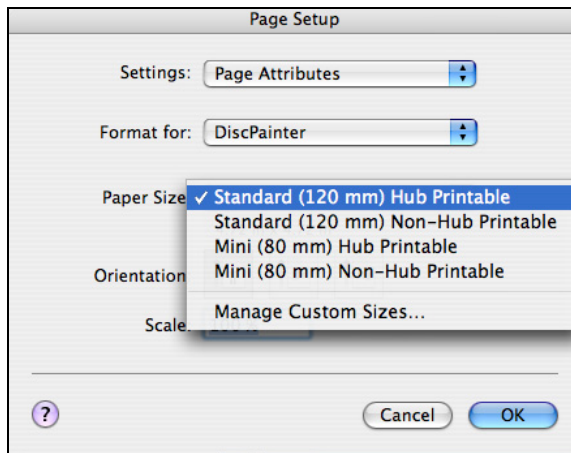
- Standard (120 mm) Hub Printable
- Standard (120 mm) Non-Hub Printable
- Mini (80 mm) Hub Printable
- Mini (80 mm) Non-Hub Printable

Default Inside Diameter and Outside Diameter values are assigned to each of the paper size options. However, you can change these values if you need to expand or reduce the printable area on the disc (see "Customizing the Inner and Outer Diameter" on page 12 for information).

To select the disc setting

- 1 Choose **Page Setup** from the **File** menu.

- 2 Select **Page Attributes** from the **Settings** drop-down list.
- 3 Select **DiscPainter** from the **Format for** drop-down list.
- 4 From the **Paper Size** drop-down list, select the disc setting that matches the size and type of inkjet-printable disc you are using.



- 5 Click **OK**.

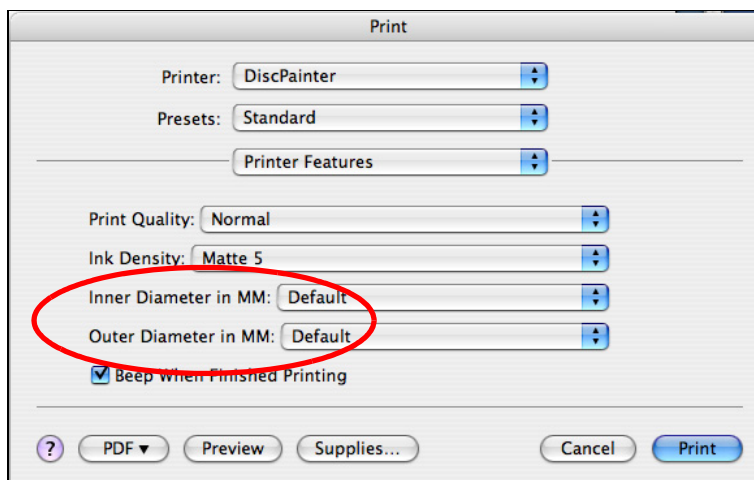
Customizing the Inner and Outer Diameter

You can customize the inner and outer diameters appropriate for the discs you are using. The inner and outer dimensions of inkjet-printable discs are not standardized and you might find that you need to specify different inside and outside diameter values to match the discs you buy.

For example, if you find that a batch of inkjet-printable discs you purchase has a printable area between 25 mm and 118 mm, you can specify 25 mm for the Inner Diameter and 118 mm for the Outer Diameter. With these settings, designs you print would appear in the area 25 mm to 118 mm from the disc's center.

To control the Inner and Outer Diameter

- ◆ From the Print dialog box, select the desired inner and/or outside diameter from the **Inner Diameter in MM** and/or **Outer Diameter in MM** drop-downs, respectively.



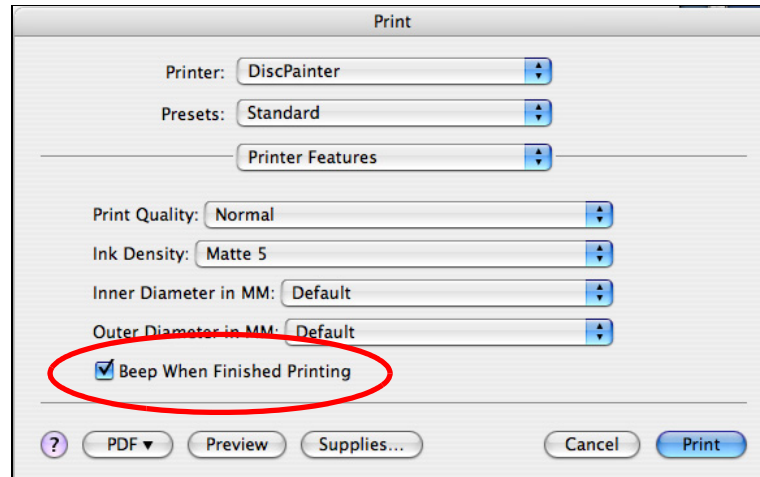
Printing Multiple Copies

You can easily print multiple copies of the same disc image. After each print job is finished printing, the Ink LED on top of the printer blinks yellow to indicate the print job is finished. You can then remove the finished disc and insert a blank disc for the next print job.

When printing multiple copies, you can configure the printer to beep after each disc is finished printing to let you know when to insert a new disc.

To turn on the disc-finished-printing beep

- ◆ Select **Beep When Finished Printing** check box.



Printing to the DiscPainter Printer

This section describes the steps required to print images to your printer from applications other than the Discus for DYMO software. The printing process varies to some degree with different applications. Sample files for several common applications are provided to simplify printing from these programs.

For details about printing using a particular program, see the documentation included with that program. For information on using the printer with the Discus for DYMO software, see the *Discus for DYMO Online Help*. Below are some general tips on using the printer with other applications.

To configure your application to print to the DiscPainter printer

- Set up a paper size that matches the size of the disc you are using.
For example, if printing to a Standard (120 mm, 4.7") disc, set up a paper size of 120 mm wide and 120 mm high; if printing to a Mini (80 mm, 3.15") disc, set up a paper size of 80 mm wide and 80 mm high.
- Set all the margins to 0.

The new document is a 120 mm or 80 mm square with no margins on any of the four sides. By defining the appropriate paper size, your design will be centered on the paper.

Using Sample Files

Sample files for several popular graphics design programs are included in the Sample Documents folder. These sample files contain the proper page settings for printing a CD/DVD design to the DiscPainter printer.

Sample files are provided for the following programs:

- Photoshop®
- Illustrator®
- QuarkXPress®
- InDesign®

To create disc designs using one of the sample files

- 1 From the application program, select the program's file open command and navigate to the Sample Documents folder in the DYMO DiscPainter folder.
- 2 Select and open the sample file appropriate for the program you are using.
A blank document, pre-configured with the proper DiscPainter printer settings, is displayed.
- 3 Create your design and print.

Note Make sure you set the printer features that are appropriate for the type of disc you are using.

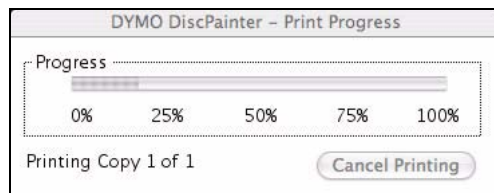
General Printing Instructions

When you are ready to print an image onto a disc, follow the steps below.

To print to a DiscPainter printer

- 1 Insert a blank disc into the printer (see "Loading Discs" on page 6 for information).
- 2 Select **Print** (this command is typically accessed from the application's **File** menu). The Print dialog box is displayed.
- 3 Select the **DiscPainter** printer. (If you don't see a list or menu used to select printers, see the documentation included with the program for instructions on selecting printers.)
- 4 Select **Printer Features** from the menu below the **Presets** menu.
- 5 Select the desired features from the **Printer Features** menus. See "Controlling Printer Features" on page 9 for details about the printer features.
- 6 Click **Print**.

During printing, the Print Progress dialog box is displayed. This dialog box shows the progress of the current print job (percentage completed, from 0% to 100%), the copy currently being printed, and the total number of copies ("Printing copy 1 of 2," for example).



To cancel the current print job

- ◆ Click **Cancel Printing** in the **Print Progress** dialog box. Printing stops at the point the printer receives the cancel printing instruction. The disc tray moves back to the home position.

Chapter 4

Printing From Windows

This chapter describes printing to the DYMO DiscPainter printer from Windows and covers the following topics:

- Using the DiscPainter Status Monitor
- Controlling print options
- Printing from other software programs




See “Printing from Mac OS” for information on printing from Mac OS.

About the DiscPainter Status Monitor

After you install the DYMO DiscPainter software (see the DYMO DiscPainter *Quick Start Guide* for information), the DiscPainter Status Monitor icon is displayed in the system tray.



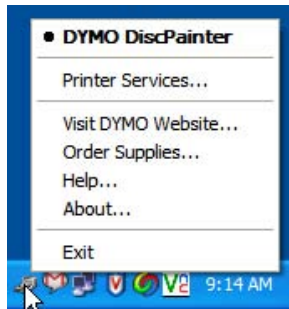
The appearance of the DiscPainter Status Monitor icon in the system tray shows the status of the printer. The possible printer states are described below.

DiscPainter Status Monitor Icon	Description
	Printer is ready to print
	Front cover is open; close the cover to print
	Printer is not ready to print (see "Troubleshooting" on page 39 for information on resolving errors).

From Windows, you can access several printer services using the DiscPainter Status Monitor icon.

To access the printer services

- ◆ Click the **DiscPainter Status Monitor** icon and select **Printer Services**. A menu is displayed.



See "Using Printer Services" on page 23 for more information.

Note DYMO DiscPainter is grayed out in the menu if no DiscPainter printer is found. See "Installation Problems" on page 39 for more information.

Controlling Print Options

You can define several print options for your DYMO DiscPainter printer from the DiscPainter Properties dialog box:

- Print quality and speed
- Disc settings
- Ink density

All of these settings can be controlled directly from the Discus for DYMO software. However, if for some reason you are not using Discus for DYMO, these print options can be controlled directly.

To open the DiscPainter Properties dialog box

- 1 Open the **Printer and Faxes** control panel.

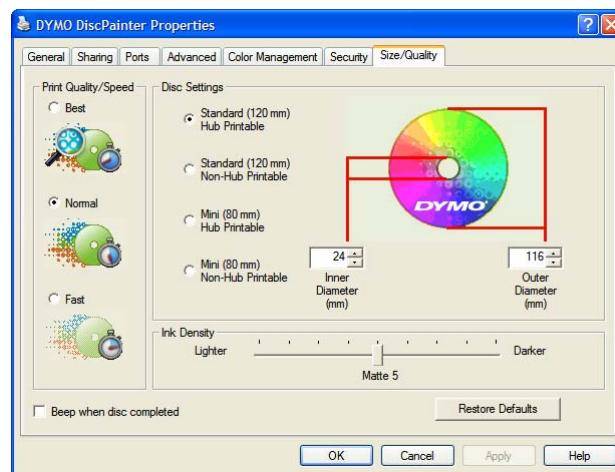
The Printers and Faxes control panel is displayed.



- 2 Right-click the **DiscPainter** icon and select **Properties**.

The DiscPainter Properties dialog box is displayed.

- 3 Click the **Size/Quality** tab.
The Size/Quality pane is displayed.

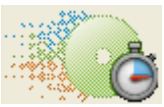




Note The settings you define as described above are saved until you change them. However, if you change the print options from within an application (such as Adobe Photoshop), the settings you define are not saved.

Controlling Print Quality/Speed

You can choose from several print quality/speed options. In general, higher quality print requires longer print times. Print speed depends on many factors: the amount of computer memory you have, the complexity of your design, the number of colors in the design, and so on.

The Print Quality/Speed options are described below.

Print Quality /Speed Option	Description
 Fast	Uses image smoothing and halftoning to produce full-color print quality.
 Normal	Produces full-color print quality superior to Fast mode; the resulting image is suitable for most applications. Images require about twice as long to print as in Fast mode.
 Best	Produces the best full-color print quality available. Images require about twice as long to print as in Normal mode.

Note The print time mentioned above is measured from the time the print tray moves into printing position.

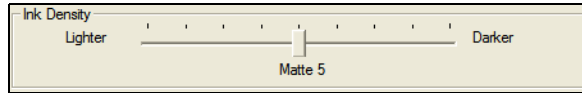
To select a Print Quality/Speed option

- ◆ Select the print quality/speed option you want.

Controlling Ink Density

You can easily adjust the ink density (amount of ink) printed on discs. Less ink results in images that are less dense; more ink results in denser images. In general, the disc's finish (matte, glossy, color, and so on) determines the ink density you should use. See "About Printable CDs/DVDs" on page 5 for details about the various types of inkjet-printable discs.

The Ink Density control on the DiscPainter Properties dialog box has nine settings.



Setting	Description
Matte 1 - 5	Uses less ink and printed image is less dense. Recommended setting for inkjet-printable discs with a matte finish. Default setting is Matte 5.
Glossy 6 - 7	Uses slightly more ink than the matte settings. Recommended setting for inkjet-printable discs with a glossy finish.
Color 8 - 9	Uses more ink and printed image is more dense. Recommended setting for inkjet-printable discs with a silver or color finish.

We recommend experimenting with the settings to see what works best for your inkjet-printable media.

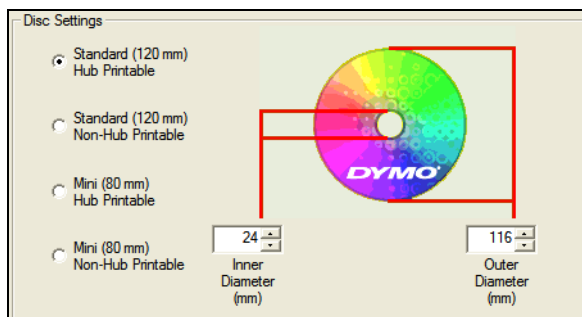
To select the ink density

- ◆ Drag the **Ink Density** slider toward **Lighter** to decrease ink density;
- ◆ Drag the **Ink Density** slider toward **Darker** to increase ink density.

You might find that you prefer settings other than those recommended. Select a finish (matte, glossy, or color) that matches your disc. If the results are not what you expected, try printing with a different ink density setting.

Controlling Disc Settings

Default Inside Diameter and Outside Diameter values are assigned to each of the Disc Settings options. However, you can change these values if you need to expand or reduce the printable area on the disc (see "Controlling Disc Inside and Outside Diameters" below for information).



To select the Disc Settings option

- ◆ Select the disc setting that matches the size and type of inkjet-printable disc you are using.

The calipers correspond to the values displayed in the Inner Diameter (mm) and Outer Diameter (mm) fields. The values (in millimeters) in these fields control the printable area on the disc.

Controlling Disc Inside and Outside Diameters

The inner and outer dimensions of inkjet-printable discs are not standardized and you might find that you need to specify different inside and outside diameters to match the discs you buy. You can specify custom values for the inside and outside diameters for each Disc Settings option. For example, if you find that a batch of standard size, hub-printable discs you purchase has a printable area between 25 and 118 mm, you can select the Standard (120 mm) Hub Printable option and then specify 25 (mm) for the Inner Diameter and 118 (mm) for the Outer Diameter. With these settings, designs you print would appear in the area 25 mm to 118 mm from the disc's center.

To control the inner and Outer diameter settings

- 1 Select the disc setting that matches the size and type of inkjet-printable disc you are using.
- 2 Select the **Inner** or **Outer Diameter** value you want to change.
- 3 Either type in the desired value (in millimeters) or click the up/down arrows to increase or decrease the value in the field.

Restoring Default Settings

If you change any of the printer settings, you can easily restore the original factory default settings.

To restore the printer settings

- ◆ Click **Restore Defaults** in the **DiscPainter Properties** dialog box.

The settings in the dialog box revert to their default values.

Printing Multiple Copies

You can easily print multiple copies of the same disc image. After each print job is finished printing, the Ink LED on top of the printer blinks yellow to indicate the print job is finished. You can then remove the finished disc and insert a blank disc for the next print job.

When printing multiple copies, you can configure your system to beep after each disc is finished printing to let you know when to insert a new disc.

To turn on the disc-finished-printing beep

- ◆ Select **Beep when disc completed** in the **DiscPainter Properties** dialog box.

Note You can turn off this option from the DiscPainter Document Properties dialog box.

Printing to the DiscPainter Printer

This section describes the steps required to print images to your printer from programs other than the Discus for DYMO software. The printing process varies to some degree with different applications. Sample files for several common applications are provided to simplify printing from these programs.

For details about printing using a particular application, see the documentation included with that program. For information on using the printer with the DiscPainter software, see the Discus for DYMO Online Help.

Below are some general tips on using the printer with other applications.

To configure your application to print to the DiscPainter printer

- Set up a paper size that matches the size of the disc you are using.
For example, if printing to a Standard (120 mm, 4.7") disc, set up a paper size of 120 mm wide and 120 mm high; if printing to a Mini (80 mm, 3.15") disc, set up a paper size of 80 mm wide and 80 mm high.
- Set all the margins to 0.

By defining the appropriate paper size, your design will be centered on the paper.

Using Sample Files

Sample files for several popular graphics design programs are included in the Sample Files folder. These sample files contain the proper page settings for printing a CD/DVD design to the DiscPainter printer.

Sample files are provided for the following programs:

- Photoshop®
- Illustrator®
- InDesign®
- SureThing™ CD/DVD Labeler
- QuarkXPress®

To print using the sample files

- 1 From the application program, select **Open** from the **File** menu and navigate to the Sample Documents folder.
The Sample Documents folder is typically located in C:\Program Files\DYMO DiscPainter.
- 2 Select and open the sample file appropriate for the program you are using.
A blank document, pre-configured with the proper DiscPainter printer settings, is displayed.
- 3 Create your design and print.

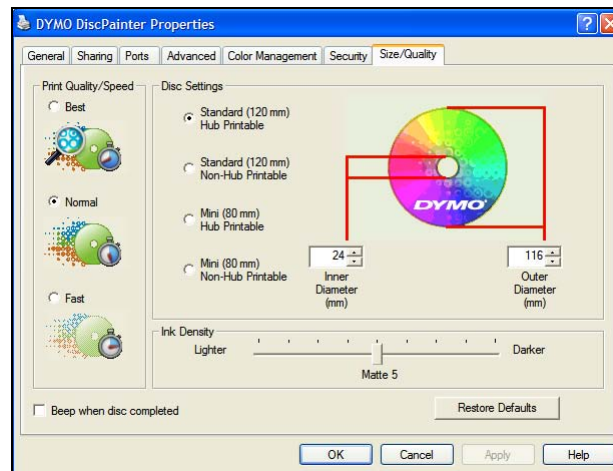
Note Make sure you set the printer features that are appropriate for the type of disc you are using.

General Printing Instructions

Discus for DYMO automatically sets the printer options based on the settings you select on the Project Preview tab. However, if you are printing from another application, you may need to manually control the printer settings. When you are ready to print an image, follow the steps in this section.

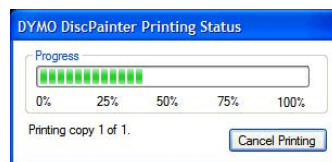
To print to a DiscPainter printer

- 1 Insert a blank disc into the printer (see "Loading Discs" on page 6 for information).
- 2 Select **Print**. This command is typically accessed from the application's **File** menu. A dialog box is displayed.
- 3 Select the DiscPainter printer. (If you don't see a list or menu used to select printers, see the documentation included with the program for instructions on selecting printers.)
- 4 Click **Properties** (or **Setup**). The **DiscPainter Document Properties** dialog box is displayed.
- 5 Click the **Size/Quality** tab. The **Size/Quality** pane is displayed.



- 6 If necessary, adjust any printer settings you want. See "Controlling Print Options" on page 16 for details.
- 7 When finished, click **OK**.
- 8 Click **Print**.

During printing, the Printing Status dialog box is displayed. This dialog box displays the progress of the current print job (percentage completed, from 0% to 100%), the copy currently being printed, and the total number of copies ("Printing copy 1 of 2," for example).



To cancel the current print job

- 1 Click **Cancel** in the **Printing Status** dialog box. A confirmation dialog box is displayed.
- 2 Click **Yes** to cancel the print job. Printing stops at the point the printer receives the cancel printing instruction. The disc tray moves back to the home position.

Chapter 5

Caring for Your Printer

This chapter describes how to care for your DYMO DiscPainter printer and covers the following topics:

- Handling print cartridges
- Using printer services
- Replacing the inkjet cartridge
- Cleaning the printer
- Repacking the printer for travel

Handling Inkjet Cartridges

Below are some tips on working with inkjet cartridges.

- Keep new inkjet cartridges in their protective packaging until you are ready to use them.
- Avoid touching the flexible circuit (metallic, gold) portion of the cartridge or placing it other than inside the printer.
- Handle the inkjet cartridge with care: do not drop it or let it fall as this could make it unusable.


Using Printer Services

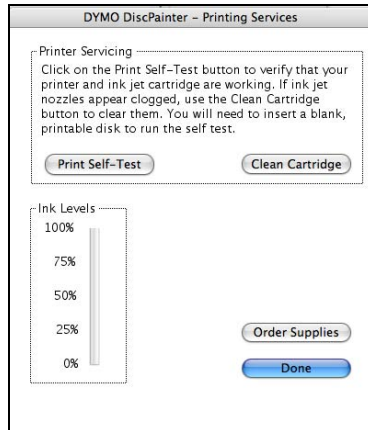
You can use Printer Services to:

- Display the ink level of the printer's inkjet cartridge. See "Checking the Ink Level" on page 24 for more information.
- Clean the inkjet cartridge. See "Cleaning the Inkjet Cartridge" on page 25 for more information.
- Order printing supplies. See "Purchasing New Inkjet Cartridges" on page 25 for more information.
- Print a self-test pattern. See "Printing a Self-Test" on page 41 for more information.

The steps for accessing printer services vary somewhat on Mac OS and Windows systems. See the steps below that are appropriate for your operating system.

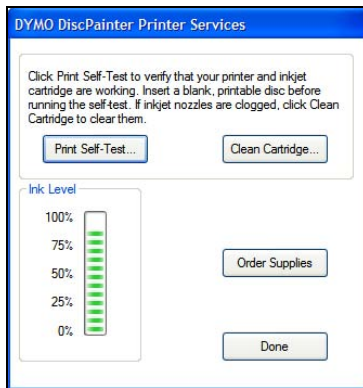
To access printer services from Mac OS

- 1 From the Finder, select **Applications>Utilities>Printer Setup Utility**.
The Printer List dialog box is displayed.
- 2 Select **DiscPainter** from the **Printer List**.
- 3 Click  .
The Printer Services dialog box is displayed.



To access printer services from Windows

- ◆ Click the **DiscPainter Status Monitor** icon in the Windows system tray and select **Printer Services**.
The Printer Services dialog box is displayed.



Checking the Ink Level

The Ink Level gauge on the Printer Services dialog box displays the amount of ink remaining in the printer's inkjet cartridge (100% = full, 0% = empty).

The number of discs that can be printed from one ink cartridge varies greatly depending on the image size and ink density per disc. A message is displayed when ink levels reach approximately 20% and again when the ink level reaches 10% and 5%. When the ink level reaches 2%, a low ink message appears each time you print. See "Purchasing New Inkjet Cartridges" on page 25 for more information.

Cleaning the Inkjet Cartridge

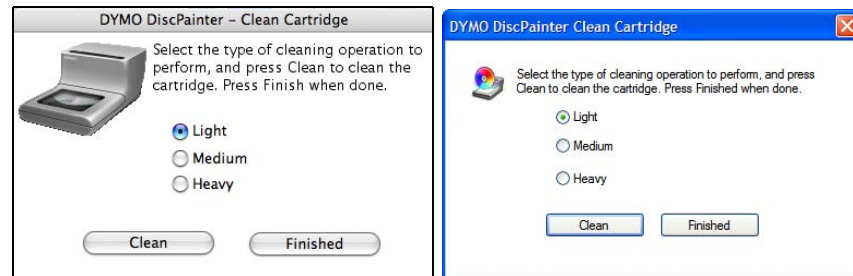
You can clean the inkjet cartridge to help eliminate print output problems related to the inkjet nozzles. If you see white lines (blank lines where ink should appear), this could mean one or more of the small nozzles that deliver the ink are clogged. You should clean the inkjet cartridge.

Note Heavy cleaning should only be performed when the printer has not been used for an extended period of time.

To clean the inkjet cartridge

- 1 Click **Clean Cartridge**.

The Clean Cartridge dialog box is displayed.



- 2 Select the button beside the type of cleaning you want.
Start by selecting Light cleaning, and then if the problem is not solved try Medium and then Heavy cleaning.
- 3 Click **Clean**.
- 4 Click **Finish** when done.

Purchasing New Inkjet Cartridges

You can purchase replacement inkjet cartridges at your local office supply retailer or directly from DYMO.

To purchase new inkjet cartridges

- 1 Click **Order Supplies**.
Your Web browser opens the appropriate DYMO Web page.
- 2 Locate the link for ordering inkjet cartridges and follow the instructions for placing your order.

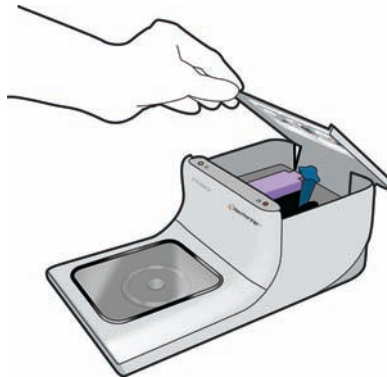
Replacing the Inkjet Cartridge

The DiscPainter printer uses a single, multicolored, inkjet cartridge (part number 1738252).

Note For best printing results, wait 2 to 4 minutes after changing the inkjet cartridge before printing. This allows the ink temperatures to equalize.

To replace the inkjet cartridge

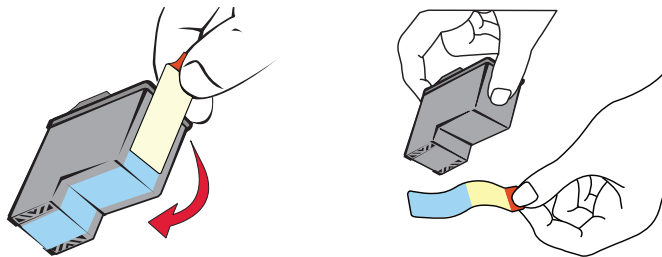
- 1 Open the top cover.



- 2 Push the blue cartridge release lever to unlock the purple cartridge latch.



- 3 Remove the old cartridge.
- 4 Carefully remove the new inkjet cartridge from the packaging.
- 5 Remove the protective tape from the cartridge.



- 6 Insert the inkjet cartridge into the cartridge bay with the label facing up and the gold contacts towards the front of the printer.



- 7 Press the purple cartridge latch down until it locks in place.



- 8 Close the top cover.

Cleaning the Printer

After using the printer for a period of time, a thin film of ink residue may build up on the clear window in the front cover. This is normal and is caused by the misting of the ink during printing.

Caution Avoid spraying or applying household cleaners inside the printer. Cleaners should only be used on external surfaces.

To clean the printer

- ◆ Clean the clear cover and outside of the printer case using a soft cloth and non-petroleum based cleaner, such as Windex® or similar cleaner.

Caution Avoid spraying or applying household cleaners inside the printer. Cleaners should only be used on external surfaces of the printer.

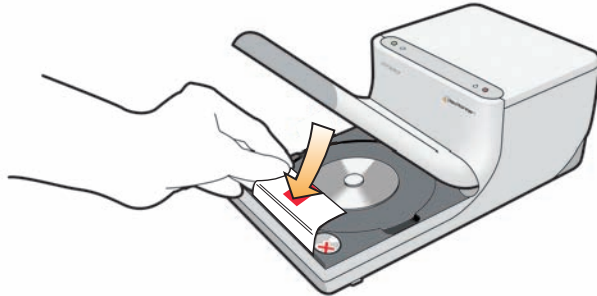
Repacking the Printer for Travel

The printer's disc tray is carefully aligned to print perfectly. This alignment can be affected when the printer is bumped or otherwise mishandled during shipping.

When you originally unpacked your printer, you removed a piece of cardboard from in front of the disc tray and two pieces of foam packing from inside the ink cartridge compartment. When packaging the printer for shipping, or any time the printer will be transported out of your care, you should insert these packing pieces to preserve the disc alignment.

To repack the printer

- 1 With the power connected, open the front cover, and then open the top cover. The disc tray moves towards the back of the printer.
- 2 Insert cardboard between the disc tray and the front of the printer.



- 3 Close the top cover. The disc tray moves forward against the cardboard insert.
- 4 Close the front cover.
- 5 Unplug the power cable from the power outlet and, then from the printer.
- 6 Open the top cover and remove the ink cartridge.
- 7 Insert the foam packing block into the ink cartridge bay.



- 8 Push the purple latch until the blue latch locks in place.

- 9 Insert the foam packing block into the space on the right side of the ink cartridge.



- 10 Close the top cover.
11 Pack the printer in the original packaging.

Printing Over a Network

This chapter describes how to print to a DYMO DiscPainter printer over a network. The topics covered in this chapter are:

- “Printing to a Shared Printer from Mac OS”
- “Printing to a Shared Printer from Windows”

The following are the general steps you need to follow to set up a printer for printing over a network. These steps are provided as a general overview and reminder that you must be able to print locally to the printer before you can share it.

The term *local* computer refers to the computer to which the printer is physically connected. The term *remote* computer refers to the computer from which you wish to print to a printer on the network.

Note When printing to a shared printer, any messages generated by the printer, including error messages, are displayed on the local computer, not on the remote computer.

To print to a shared printer over a network, the remote computer must be able to access the local computer over the network. Contact your System Administrator for more information.

- 1 Install the printer to be shared on the local computer.
- 2 Confirm that you can print to the printer locally.
- 3 Share the printer on the local computer.
- 4 Install the DiscPainter Software on the remote computer.

Printing to a Shared Printer from Mac OS

This section describes how to print to a shared printer in a Mac OS workgroup. For information on printing to a shared printer under other versions of Mac OS, see your Mac OS documentation or contact your System Administrator.

Sharing a Printer on a Network

These instructions assume that you have already installed DYMO DiscPainter Software on the local computer. See the printer’s *Quick Start Guide* for information.

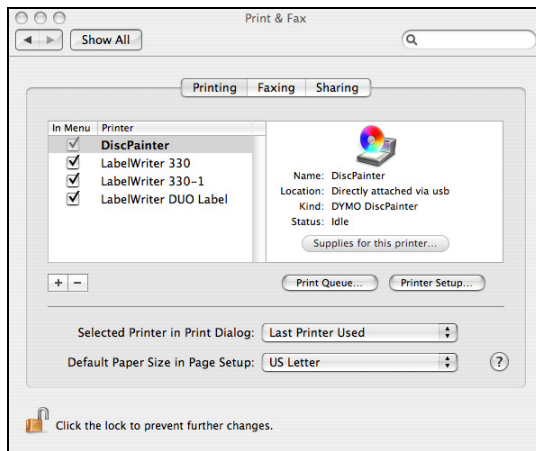
Before printing to a shared printer, you first need to share the printer on the local computer.

To share the printer

- 1 Select **System Preferences** from the **Apple** menu.
The System Preferences dialog box is displayed.

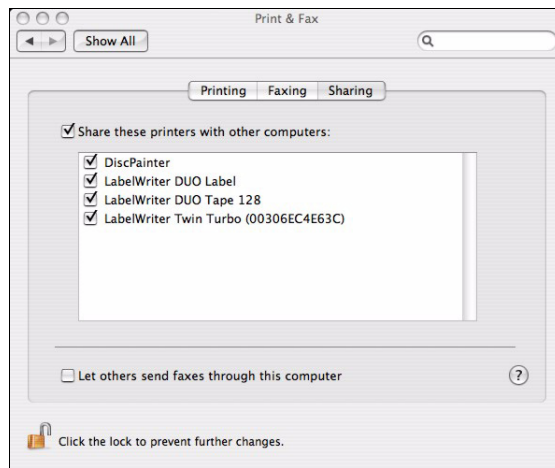
2 Double-click **Print & Fax**.

The Print & Fax dialog box is displayed.



3 Select the printer you want to share and then click **Sharing**.

The Sharing pane is displayed.



4 Select the **Share these printers with other computers** check box and then select the check box in front of each printer you wish to share.

5 Close the **Print & Fax** dialog box.

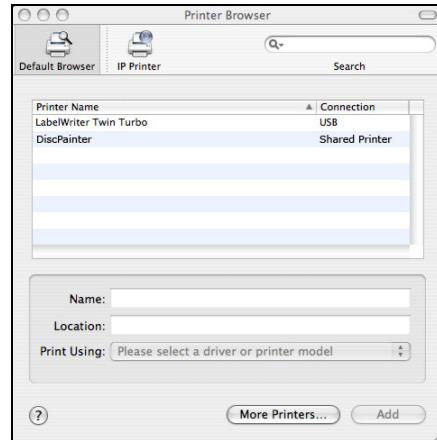
Adding a Shared Printer

Before you can print to a shared network printer, you need to install DiscPainter software on your local computer.

To install a shared network printer

- 1 Install DYMO DiscPainter Software. (See the Quick Start Guide for information.)
- 2 From the Finder, select **Applications>Utilities>Printer Setup Utilities**.
The Printer List dialog box is displayed.

- 3 Click **Add**. The Printer Browser dialog box is displayed.



- 4 Select the printer and then click **Add**.
The shared printer is added to the Printer List dialog box.
- 5 Close the Printer List dialog box.

Printing to a Shared Printer from Windows

This section describes how to print to a shared DiscPainter printer in a Windows XP workgroup. For information on printing to a shared printer under Windows Server or other versions of Windows, see your Windows documentation or contact your System Administrator.

Sharing a Printer on a Network

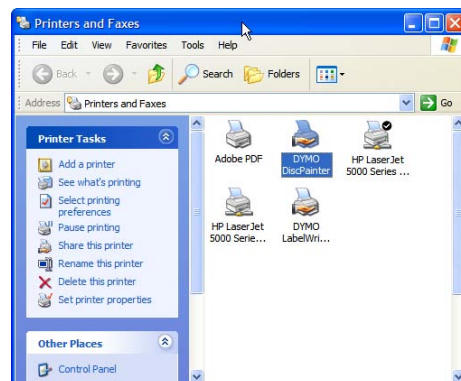
These instructions assume that you have already installed DiscPainter printer software on the local computer. See the printer's *Quick Start Guide* for information.

Before printing to a shared printer from Windows, you first need to share the printer on the local computer.

To share the printer

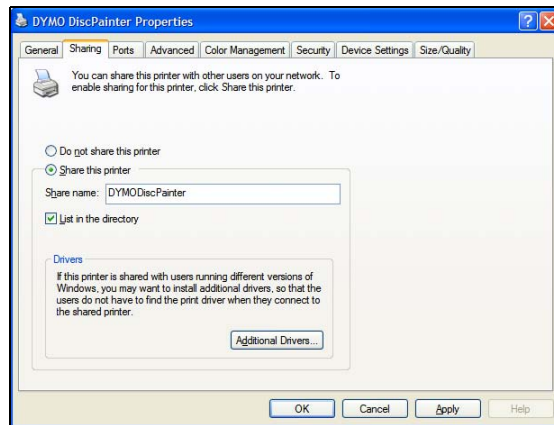
- 1 Click **Start** and select **Printers and Faxes**.

The Printers and Faxes control panel is displayed.



- 2 Right-click the printer you want to share and select **Sharing**.

The DYMO Printer Properties dialog box is displayed with the Sharing pane open.



- 3 Select **Share this printer**.
- 4 Optionally, enter a different name for the printer in the **Share name** field. This is the printer name that appears to other users on the network.
- 5 Click **OK**. The share icon (hand) is displayed under the shared printer. This indicates that other users in the workgroup can print to this printer.

Installing a Network Printer

Before you can print to a shared network printer, you need to install DiscPainter software on your local computer.

To install a network printer using DiscPainter Installer

- 1 Install DYMO DiscPainter Software. (See the Quick Start Guide for information.)
- 2 Run the Add Printer Wizard to connect to the network printer you wish to use.

Chapter 7

Frequently Asked Questions

This chapter gives answers to some frequently asked questions about working with the DiscPainter CD/DVD printer.

What kind of discs can I print on with the DiscPainter printer?

You can only print on discs designed for inkjet printers. Do not use thermal discs, which can also have a white printable surface, or other non inkjet-printable discs.

What will happen if I don't use an inkjet-printable disc?

Inkjet printable discs are coated with a special material to allow the ink to adhere. If you do not use discs with this special coating, the ink will pool on the disc surface and not dry.

What are hub-printable discs?

Hub-printable discs allow you to print your design closer to the inner edge of the center hole in the disc. Refer to "Working with Discs" on page 5 for more information about discs.

What type of discs are recommended for inkjet printing?

We recommend purchasing inkjet-printable discs from any of the major disc manufacturers. Glossy inkjet or water-resistant inkjet discs give the best quality of inkjet printing.

What is the difference between matte and glossy discs?

Inkjet matte discs have a dull, flat surface. Inkjet glossy discs have a lustrous, shiny surface and are often described as water-resistant. Matte surfaces, by their design, provide a softened appearance, while glossy surfaces provide much sharper images.

Where can I find inkjet-printable discs?

You can purchase inkjet-printable discs locally or online from a computer or office supply retailer, or directly from DYMO at www.dymo.com.

Why does my printed design look different on different discs?

Manufacturers add a special coating to inkjet-printable discs so that the ink can be absorbed into the coating allowing the ink to adhere to the surface. Different manufacturers develop different coatings. The differences you see in your printed design are due to the amount and depth that the ink is absorbed into the surface. Some coatings absorb the ink deeper than others, and this results in differences in density or brightness of the colors. Matte surfaces, by their design, provide a softened appearance, while glossy surfaces provide much sharper images.

What software do I need to print to my DiscPainter printer?

The DiscPainter printer software included with your printer is all the software you need to print from any application to the DiscPainter printer. The DiscPainter software installation includes the Discus for DYMO software for creating disc designs; however, you can print to the DiscPainter printer using many popular design programs, such as Adobe® Illustrator® or Photoshop®. Refer to "Printing from Mac OS" on page 9 and "Printing From Windows" on page 15 for more information.


What are the system requirements for using the DiscPainter printer?

Refer to "System Requirements" on page 1 for complete system requirements.

What kind of ink cartridge does the DiscPainter printer require?

The DiscPainter printer uses a special DYMO inkjet cartridge, part number 1738252. You can purchase replacement print cartridges at your local or online office supply retailer or directly from DYMO at www.dymo.com.

How can I tell when the ink cartridge is running low on ink?

When the ink is running low in the ink cartridge, the ink status light  on the top of the printer will first become solid yellow when the ink level drops below 20% and then solid red when the ink level drops below 5%. You can also check the ink level in the Printer Services dialog box. Refer to "Using Printer Services" on page 23 for more information.

How do I install a new ink cartridge?

Refer to "Replacing the Inkjet Cartridge" on page 25 for complete information about inserting an ink cartridge.

How long will the ink cartridge last if I am not printing very often? Will the ink dry out?

Environmental and storage conditions can accelerate ink evaporation, which reduces the life of the inkjet cartridge. To maximize the number of discs you can print from one inkjet cartridge, use the printer regularly.

How do I clean the printer?

You can clean you printer using a soft cloth and a mild, non-petroleum based household cleaner, such as Windex.

Caution Avoid spraying or applying household cleaners inside the printer. Cleaners should only be used on external surfaces of the printer.

What is special about RadialPrint™ Technology?

With RadialPrint Technology, the DiscPainter printer is fast and compact, and there is no need for add-on accessories and cumbersome disc carriers. For complete information about RadialPrint Technology, visit the DiscPainter Web site.

Can I print on a disc twice?

It is possible to print on a disc twice. However, because the disc is spinning during printing, it is impossible to align a new design to print correctly on top of the existing design.

Can I install more than one DiscPainter printer on my computer?

Installing multiple DiscPainter printers is not supported at this time.

How do I pack the printer for travel?

When transporting the printer, make sure you pack the printer as it was packed in the original packaging using the foam packing blocks and cardboard insert. Refer to "Repacking the Printer for Travel" on page 27 for complete instructions on packing the printer properly.

Chapter 8

Troubleshooting

This chapter describes how to resolve errors you might encounter using your DYMO DiscPainter printer. Topics covered in this chapter include:

- Installation problems
- Printing problems

Installation Problems

This section lists some software installation problems you might encounter and provides information on how to resolve the problems.

Windows Installation Problems

If you do not see the DiscPainter printer in the Print dialog box or the Printers and Faxes window, try the following:

- Make sure that your system conforms to the DiscPainter system requirements (see "System Requirements" on page 1 for information).
- Make sure you use the USB cable that came with the printer. This cable is rated for USB 2.0 data rates, and other, less expensive cables may cause improper operation.
- Make sure the USB printer cable is correctly connected to your computer and the USB connector on the back of the printer.
- Make sure the printer is plugged in and receiving power (the Power status light should be green).

If the steps above do not solve the problem, try uninstalling and then reinstalling the DiscPainter software.

Mac OS Installation Problems

If the DiscPainter printer does not appear in the Printer List, try the following:

- Make sure that your system conforms to the DiscPainter system requirements (see "System Requirements" on page 1 for information).
- Make sure you use the USB cable that came with the printer. This cable is rated for USB 2.0 data rates, and other, less expensive cables may cause improper operation.
- Make sure the USB printer cable is correctly connected to your computer and the USB connection on the back of the printer. Do not connect the USB cable to a USB port on a Macintosh keyboard.
- Make sure the printer is plugged in and receiving power (the power status light should be green).

If the steps above do not solve the problem, try uninstalling and then reinstalling the DiscPainter software.

Printing Problems

This section lists some printing problems you might encounter while printing and provides information on how to resolve the problems.



Error Messages

Below are conditions and error messages you might encounter while using the printer, along with possible solutions to the problems

Condition/Message	Possible Solution
No Printer Connected	<p>Check the following:</p> <p>Make sure you use the USB cable that came with the printer. This cable is rated for USB 2.0 data rates, and other, less expensive cables may cause improper operation.</p> <p>Make sure the USB printer cable is correctly connected to your computer and the USB connection on the back of the printer.</p> <p>Make sure the printer is plugged in and receiving power (the green Status LED should be lit).</p>
Warning: Your printer's cartridge cover is open.	Make sure the inkjet cartridge is correctly installed in the printer and close the printer's top cover.
Warning: A disc is waiting to be printed but the cartridge cover is open.	Close the top cover to allow the disc to print.
Warning: The cartridge cover was opened during printing.	The print job will be cancelled once the top cover is closed. Start the print job again.
Warning: The printer cannot print while the disc cover is open	Close the front cover to allow the disc to print.
Warning: The disc cover was opened during printing.	The print job will be cancelled. Close the front cover and start the print job again.
Warning: No printable disc was found.	Insert an inkjet-printable disc and click Continue.
Warning: The disc size in the printer does not match the size specified in the print job.	Make sure the disc in the printer matches the disc size for the print job.
The ink cartridge is not inserted correctly or is missing.	Check to make sure the inkjet cartridge is inserted correctly. If it is inserted correctly, try inserting another cartridge or inserting the cartridge with the printer's power connector unplugged.
The ink cartridge has failed.	Remove and reinsert the inkjet cartridge. If the error still occurs, try a new cartridge.

Printer Status Lights

The Power and Ink LED status lights on top of the printer indicate the current status of the printer.

 Power Light	 Ink Status Light	Description
Solid Green	Any state	Ready to print.
Solid Green	Blinking Yellow	Disc printing is finished; remove disc from disc tray.
Blinking Green	Blinking Yellow	Wrong or missing media. Cover opened during printing.
Solid Red	Blinking Red	Wrong or missing ink cartridge.
Solid Red	Any state	General error.
Any state	Solid Yellow	Ink level is low.
Any state	Solid Red	Change ink cartridge.
Green and Red blinking	Red blinking	Self-test after power is connected.

Ink Level Appears Empty

If the Ink Level gauge in the Printer Services dialog box displays 0% (empty), and you believe this is incorrect, the printer may have lost contact with the computer.

To confirm that the ink level is empty

- 1 Disconnect the power cable from the back of the printer and wait a few minutes.
- 2 Remove the print cartridge from the printer and then place it back in the printer (see "Replacing the Inkjet Cartridge" on page 25 for information on removing the print cartridge).
- 3 Connect the power cable and check the ink level again.

Printing is Too Light or Dark

If printing is too light or dark, the ink density setting may be too light or too dark. For Mac OS, see "Controlling Ink Density" on page 10; For Windows, see "Controlling Ink Density" on page 18.

Smudges Appear Outside of Design

Check the printing area defined in your design software. For Mac OS, see "Controlling Disc Settings" on page 11; for Windows, see "Controlling Disc Settings" on page 18.

Ink Pools on Disc


If ink pools on the disc, make sure you are using an inkjet-printable disc. See "About Printable CDs/DVDs" on page 5.

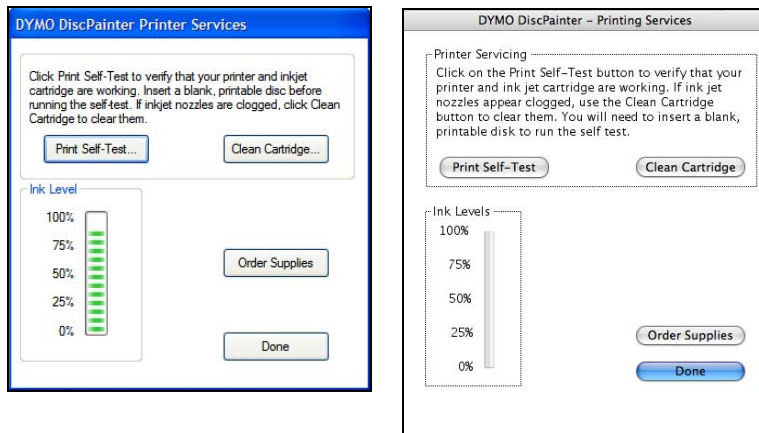
Printing a Self-Test

You can print a self-test pattern on a disc to verify that the printer is functioning correctly. The test pattern printed lets you check for inkjet cartridge nozzles that are plugged or misfiring. If the colors on the test pattern are solid, with no lines or streaks, then the nozzles are working properly.

The self-test pattern is designed to allow you to use one disc for multiple self-tests. Save your disc for future tests.

To print a self-test image

- 1 Insert a blank printable disc in the printer and close the disc lid.
 - 2 Do one of the following:
 - For Windows, click the **DiscPainter Status Monitor** icon in the Windows system tray and select **Printer Services**.
 - For Mac OS, select the DiscPainter printer and click  on the Printers List dialog box.
- The Printer Services dialog box is displayed.



- 3 Click **Print Self-Test**. A confirmation dialog box is displayed.
- 4 Click **Continue**.
A “ring” of colors is printed on the disc.



If the test pattern appears streaked or “missing” some lines, try cleaning the inkjet print cartridge, as described in "Cleaning the Inkjet Cartridge" on page 25. After cleaning the print cartridge print the self-test again and examine the results. If necessary, try cleaning the cartridge again and print another self-test.

Opening the Front Cover

When the disc tray moves into printing position, the front cover locks. If you need to remove the disc due to a power failure or printer malfunction, you can use the disc lid release levers, located on each side of the front of the printer, to open the front cover and remove the disc.

To open the disc lid when it is locked

- 1 Disconnect the power cord from the printer.
- 2 Pull the two disc lid release levers forward. The front cover opens.



- 3 Remove the disc from the disc tray.

Note If you attempt to open the disc lid during printing, printing will be interrupted and the image will not print correctly.

Chapter 9

Printer Specifications

The chapter gives the specifications for the DYMO DiscPainter printer.

Physical Specifications

Print Method	Inkjet
Resolution	Up to 1200 dpi
Height	4.33" (110 mm)
Length	10.62" (270 mm)
Width	5.7" (145 mm)
Weight	2.65 lbs. (1.2 kg)

Power Specifications

	Input	Output
Printer Power Adapter Requirements	AC 100-240V ~1.0A 50-60Hz	3.0A or: 12VDC, 36W

Disc Service, Duty Cycle, and Warranty Specifications

Average Disc Service Life (discs)	2000 discs
Warranty	One Year Limited

Environmental Specifications

Operating Environment	Normal office environment, 55°- 90° F (13°- 32° C), 20%-90% non-condensing humidity
-----------------------	-------------------------------------------------------------------------------------

Declaration of Conformity

This device has been tested and complies with the requirements of:

EN60950: Low Voltage Directive Product Safety

FCC Part 15 Class B

EN55022: Radiated and Conducted Emissions B

EN50082-1: Generic Immunity ESD, RF, and Transient Susceptibility

Waste from Electric & Electronic Equipment (WEEE)

The equipment that you bought has required the extraction and use of natural resources for its production. It may contain hazardous substances for the health and the environment.

In order to avoid the dissemination of those substances in our environment and to diminish the pressure on the natural resources, we encourage you to use the appropriate take-back systems. Those systems will reuse or recycle most of the materials of your end life equipment in a sound way.

The crossed-bin symbol marked in your device invites you to use those systems.



If you need more information on the collection, reuse and recycling systems, please contact your local or regional waste administration.

You can also contact us for more information on the environmental performance of our products.

Limited Warranty

Sanford L.P. (“Sanford”) warrants to the original retail purchaser that your DYMO® DiscPainter™ CD/DVD printer will be free of defects in materials or workmanship, for one year from the original date of purchase, when used in accordance with all operating instructions. Normal wear and tear is not covered, nor is excessive use, abuse or damage caused by a user either intentionally or accidentally. Sanford also warrants that the consumable ink cartridge enclosed with the printer will perform to the manufacturer’s specified usage, which usage may expire before the expiration of the limited warranty for the DYMO DiscPainter printer.

DYMO DiscPainter CD/DVD printers are warranted for use only with ink cartridges made or approved by Sanford. Sanford will not be responsible for malfunction or damage caused by the use of other ink cartridges.

EXCEPT AS PROVIDED HEREIN, SANFORD MAKES NO OTHER WARRANTIES, EXPRESS OR IMPLIED, AND SANFORD SPECIFICALLY EXCLUDES WARRANTIES OF MERCHANTABILITY AND FITNESS FOR A PARTICULAR PURPOSE. SANFORD’S LIABILITY UNDER THIS WARRANTY SHALL BE LIMITED TO REPAIR OR REPLACEMENT OF THE PRINTER. SANFORD SHALL NOT BE RESPONSIBLE FOR ANY INCIDENTAL OR CONSEQUENTIAL DAMAGES, WHETHER OR NOT FORESEEABLE.

This warranty does not apply to refurbished or reconditioned products. This warranty covers only normal use in the United States and Canada. This warranty is not transferable. This warranty does not cover any color change or fading of prints or reimbursement of materials or services required

for reprinting. This warranty does not cover damage to the DYMO DiscPainter printer caused by parts or supplies not manufactured, distributed or certified by Sanford. Sanford is not responsible for warranty service should the DYMO label or logo or serial number be removed or should the product fail to be properly maintained or fail to function properly as a result of misuse, abuse, improper installation, neglect, improper shipping, damage caused by disasters such as fire, flood, and lightning, improper electrical current, software problems, interaction with non- DYMO products, or service other than by a Sanford-authorized service provider. If a claimed defect cannot be identified or reproduced, you will be held responsible for the costs incurred.

Proof of purchase showing the date of original purchase is required for warranty service. Additionally, printer must be shipped back in the original packaging. If the product is not shipped in its original packaging, the warranty may become void.

You may obtain warranty service by contacting Sanford's DYMO technical support department for a return authorization number. Products sent to Sanford for repair without authorization will be returned to you at your expense.

Contact the DYMO technical support department at (203) 588-2500 between 9 A.M. and 8 P.M. Eastern time. A technical support specialist will ask you to describe the problem and provide the product's serial number. Upon confirmation of the defect, the service representative will give you a Return Material Authorization (RMA) for you to use and return the printer.

The RMA number must be clearly written on the side of the shipping container in which you return the DiscPainter™. Unless otherwise instructed by us, the product must be sent freight prepaid to the following repair center:

DYMO Service Center
RMA#xxxxxx-xxxxxx (place your RA# here)
30 Commerce Road
Stamford, CT 06902-5506

DYMO will repair the defects covered under warranty at no charge within approximately three working days. DYMO will return the repaired product to you using an equivalent shipping method. The original warranty on the printer remains – it does not restart from the repair date.

Index

A

- adding
 - shared printer (Mac OS) 32
 - shared printer (Windows) 34
- application programs
 - printing from 13

C

- cancelling printing 14, 21
- caring for discs 7
- cleaning
 - discs 7
 - inkjet cartridge 25
- cleaning the printer 27
- color finish 5, 18
- copies, printing 13

D

- default settings 19
- disc tray 2
- DiscPainter
 - print options 16
- discs
 - caring for 7
 - cleaning 7
 - defining diameter 12
 - diameter 12
 - drying time 6
 - finishes 5, 10, 18
 - handling 2
 - hub-printable 5
 - inserting 6
 - loading 6
 - mini 5, 19
 - printable area 12, 19
 - printing 13, 19
 - printing multiple copies 13, 19
 - standard 5, 19
 - types 5
- Discus for DYMO Software 2

E

- environmental specifications 45
- error messages 40

F

- FAQs 35
- features 1
- front cover 2

G

- getting help
 - Help 3
- glossy finish 5, 18

I

- Illustrator 14, 20
- InDesign 14, 20
- ink density 10, 18
 - settings 11
- ink level 24, 41
- ink status light 2
- inkjet cartridge
 - cleaning 25
 - handling 23
 - part number 25
 - purchasing new 25
 - replacing 25
- inserting
 - discs 6
 - inkjet cartridge 25

L

- LEDs 21
- limited warranty 46
- loading discs 6

M

- matte finish 5, 18
- multiple copies 13, 19

N

- network printing 31

P

- packing the printer 27
- paper size 13, 19
- Photoshop 14, 20
- physical specifications 45
- power connector 2

power requirements 45
print quality 10
printable area 19
printer
 cleaning 27, 36
 default settings 19
 packing for travel 27
 selecting paper size 19
 self-test 41
 services 16, 23
 sharing (Mac OS) 31
 sharing (Windows) 33
 specifications 45
 status lights 2, 41
printing 13, 19, 21
 cancelling 14, 21
 ink density 10
 network 31
 options 16
 quality 10, 17
 setting paper size 13
 software 36
 speed 10, 17
 status 41
printing from other applications 19
programs
 printing from 13

Q

QuarkXPress 14, 20

R

reliability specifications 45
repacking the printer 27
replacing the inkjet cartridge 25
restoring default settings 19

S

sample files 14, 20
self-test 41
sharing a printer
 Mac OS 31
 Windows 33
specifications 45
speed 10
standard discs 19
status lights 2, 41
Status Monitor 15
SureThing 20

system requirements
 Mac OS 1
 Windows 1

T

templates 14, 20
top cover 2
troubleshooting 39
 error messages 40
 installation 39
 printing 40

U

USB connector 2

W

warranty 45
warranty, limited 46
water-resistant 5

Free Manuals Download Website

<http://myh66.com>

<http://usermanuals.us>

<http://www.somanuals.com>

<http://www.4manuals.cc>

<http://www.manual-lib.com>

<http://www.404manual.com>

<http://www.luxmanual.com>

<http://aubethermostatmanual.com>

Golf course search by state

<http://golfingnear.com>

Email search by domain

<http://emailbydomain.com>

Auto manuals search

<http://auto.somanuals.com>

TV manuals search

<http://tv.somanuals.com>