



# Internal All-in-One Card Reader/Writer

**DX-CRDRD**

**USER GUIDE**

Download from [Www.Somanuals.com](http://www.Somanuals.com). All Manuals Search And Download.

# Internal All-in-One Card Reader/ Writer

## Contents

Introduction.....	2
Features .....	3
Important safety instructions.....	3
Installing the card reader .....	4
Using the card reader .....	6
Troubleshooting .....	12
Specifications.....	12
Legal notices .....	13
One-year limited warranty.....	15

## Introduction

Congratulations on your purchase of a Dynex DX-CRDRD Internal All-in-One card reader/writer. This card reader provides an excellent solution for directly accessing media cards at the front of a computer. It is ideal for installation in a 3.5-inch drive bay.

The card reader directly accepts standard media memory cards, such as Secure Digital (SD), Multi Media Card (MMC), Compact Flash™ (CF), IBM® Microdrive, Memory Stick (MS, MS Pro), and xD-Picture card™.

The card reader also provides incredibly fast read/write speeds when paired with a CF UDMA card, Secure Digital High Capacity (SDHC), or a new Memory Stick PRO-HG Duo, letting you minimize the time you need to transfer files from, and writing files to memory cards. It is ideal for professional photographers and users of digital single-lens reflex (DSLR) cameras.

It also accepts mini-sized Micro SDHC, Micro SD, and M2 cards without the need for adapters.

## Features

- Provides four media card slots supporting most popular memory cards, including high speed memory cards such as SDHC, CF UDMA, and MS Pro HG.
- Provides front access on a computer.
- Easily mounts into a 3.5" drive bay.
- Compliant with USB (Universal Serial Bus) 2.0 specification interface.
- Compliant with USB Mass Storage device class specification.
- Supports the SDHC (SD v2.0) 4-bit specification.
- Supports the Memory Stick Pro-HG 8-bit specification.
- Supports the CF UDMA (CF Ultra 4.0 UMA mode) specification.
- Supports the xD-Picture v1.2 specification.
- Support for mini-sized form factor flash cards that typically require an adapter, such as Micro SDHC, Micro SD, and M2.
- Hot-swappable, with Plug & Play capability.
- Supports customized drive icons for easy drive recognition.
- Swappable front bezel for a custom look.

## Important safety instructions

Before getting started, please review the following instructions:

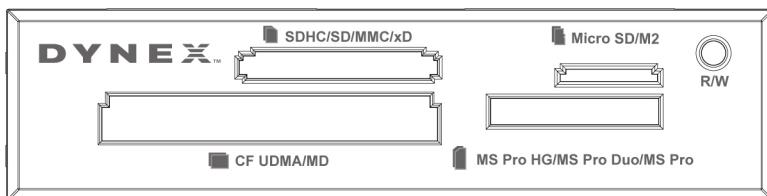
- Before connecting the card reader to your computer, read through this user guide.
- Do not drop or hit your card reader.
- Do not install your card reader in a location that is subject to strong vibrations.
- Do not disassemble or attempt to modify the card reader. Disassembly or modification may void your warranty and could damage the card reader, leading to fire or electric shock.
- Do not store the card reader in a damp location. Liquids can damage your card reader. Contact with liquids may result in fire or electric shock.
- Do not insert metal objects such as coins or paper clips into the card reader.
- Do not remove memory cards from your card reader when the LED indicates there is data activity in progress. Doing so may result in damaging your card and/or loss of data stored on the card.
- The card reader is intended for general computer use. Do not use the card reader in a computer that requires exceptional reliability, especially if a breakdown or malfunction of your card reader may cause injury or death. The card reader should not be used in specialized applications such as aerospace equipment, nuclear power control systems, traffic-related equipment, transportation equipment, industrial robotics, combustion equipment, various safety devices, and life-support systems.

## Package contents

- Card reader with USB 5-pin cable
- Mounting screws (ISO 3f 4mm) (4)
- Extra front bezel (1)
- Utility CD (includes AP drivers and this *User Guide*)
- Quick Setup Guide

## Minimum system requirements

- IBM-compatible PC
- Pentium 133 MHz or higher processor
- CD drive
- 2 MB of hard drive space
- One available on-board 5-pin USB connector on the computer's system board
- One available 3.5-inch drive bay
- Windows® 2000, Windows® XP, Windows® Vista, or Windows® 7



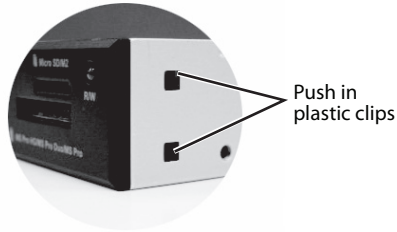
## Installing the card reader

**Caution:** Electrostatic discharge (static electricity) can damage electronic components. Make sure that you are grounded before you install your card reader. Turn off your computer, then touch a bare metal part of your computer, such as the back of the chassis or power supply, to discharge any static electricity.

### To install your card reader:

- 1 Turn off your computer and disconnect the power cord.
- 2 Open your computer's cover. For more information, see the documentation that came with your computer.

- 3 If you want the alternate colored bezel, change it now by pressing the plastic clips on each side of the card reader with a pen or pencil and pulling the bezel off, then snapping the new bezel into place.



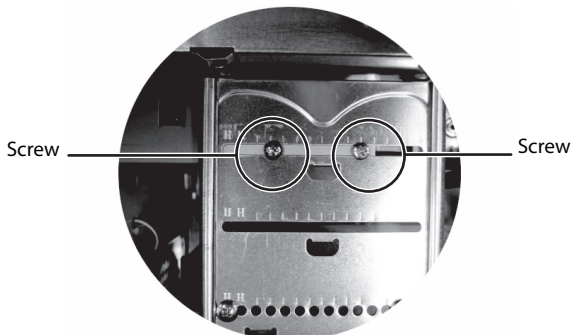
- 4 Locate a USB connector on the motherboard and make sure the connector is compatible with your card reader's USB connector.



Pin	Wire color	Function
P5	No contact	No contact
P4	Black/shield	Ground
P3	Green	D+
P2	White	D-
P1	Red	Vbus



- 5 Carefully slide your card reader into the empty 3.5" drive bay.
- 6 Secure your card reader to the drive bay with the four mounting screws (two screws per side).



- 7 Connect your card reader's USB connector to a compatible USB connector on your computer's system board (See the illustration under step 4.)
- 8 Make sure that you have removed any tools or loose screws from inside your computer, then replace your computer's cover.
- 9 Reconnect your computer's power cord, then turn on your computer.

## Using the card reader

If your computer uses Windows, the correct driver is automatically installed and four new drive icons appear in the My Computer and Windows Explorer windows. If you want to customize the card reader drive icons, see "Customizing drive icons" on page 9.

### To access a media card using Windows:

- 1 Insert a card into the appropriate slot, as shown in "Understanding card slot compatibility" on page 7.  
*Caution: Cards must be inserted into the correct slot and in the correct direction. Failure to do so may result in damage to your card and/or card reader.*
- 2 Open the *My Computer* or *Windows Explorer* applications, then double-click the drive icon for the slot you are using.
- 3 To access files and folders on the inserted card, use normal Windows procedures for opening, copying, pasting, or deleting files and folders.
- 4 When you have finished working with the files on a memory card, right-click the memory card icon in *My Computer* or *Windows Explorer* and click **Eject**. The LED on the memory card reader turns off after the card is removed.

*Caution: Do not remove memory cards while the LED on the reader is flashing.*

## Understanding the LED indicator

The activity LED indicates when a slot is reading from or writing to a card.

- LED off—Your card reader is not being used.
- LED on—A card is inserted in one of the slots.
- LED flashing—Data is being transferred to or from a card.

## Understanding card slot compatibility

<p>CF UDMA, MD</p> 	<p>Insert Compact Flash™ (CF) type I/II cards, UDMA cards, or IBM® Microdrive cards into this slot.</p>
<p>SD, SDHC, MMC, and xD</p> 	<p>Insert Secure Digital (SD or SDHC), MultiMediaCards (MMC or MMCplus), and xD picture cards into this slot.</p> <p><b>Note:</b> An adapter is required for MiniSD and RS-MMC cards.</p> <p><b>Note:</b> The Micro SD slot shares a signal bus with the SD/MMC slot, so you cannot use both slots at the same time.</p>
<p>MS Pro HG, MS Pro Duo, and MS Pro</p> 	<p>Insert Memory Stick PRO HG, Memory Stick PRO Duo, Memory Stick Duo, or Memory Stick PRO or Memory Stick cards into this slot.</p> <p><b>Note:</b> The MS slot shares a signal bus with the M2 slot, so you cannot use both slots at the same time.</p>
<p>Micro SD or M2</p> 	<p>Insert Micro SDHC, Micro SD, or M2 cards into this slot. No adapter is required.</p> <p><b>Notes:</b> The Micro SD slot shares a signal bus with the SD/MMC slot, so you cannot use both slots at the same time. The M2 slot shares a signal bus with the MS slot, so you cannot use both slots at the same time.</p>

## Customizing drive icons

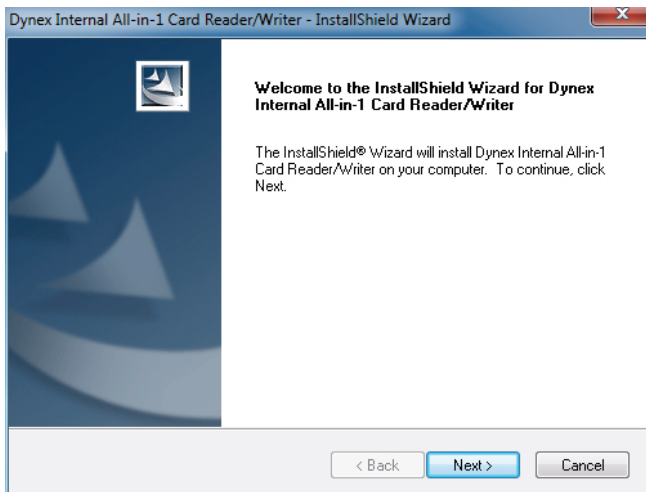
To make the media card slots easier to recognize in *My Computer* or *Windows Explorer*, you can customize the drive icons.

**To customize the drive icons using Windows:**

- 1 Save all files and close all programs.
- 2 Insert the included utility CD into the CD/DVD drive. The driver home page opens automatically.
- 3 Click **Install Driver for Windows**.







- 4 Click **Next**, then follow the on-screen instructions to install the driver.





- 5 After the driver installation is complete, the customized Windows drive icons will not appear in *My Computer* and *Windows Explorer* without inserting memory cards into a slot.
- 6 When Windows detects a card in a slot, the corresponding drive icon appears and indicates the card type.

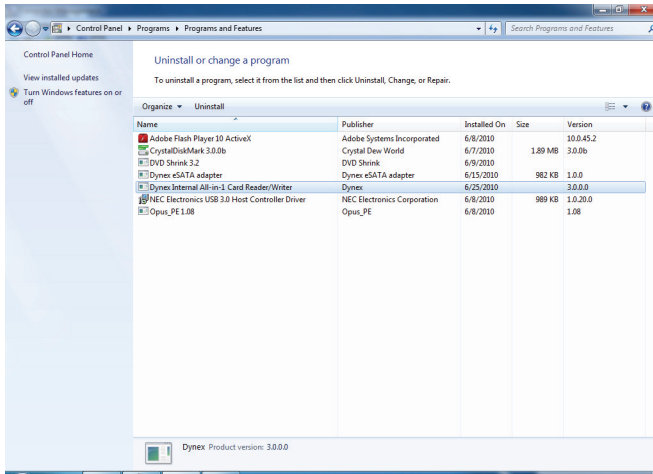
Icon	Name	Memory card
	CF/MD	CF/CFUDMA/MD
	SD/MMC/MicroSD	SD/SDHC/MMC/MMC Plus/ MicroSD/MicroSDHC
	xD	xD
	MS Pro/MS Pro Duo/M2	MS/MS Duo/MS Pro/Ms Pro Duo/MS Pro HG/M2

## Uninstalling the software

To uninstall the software in Windows Vista or Windows 7:

- 1 Click **Start**, then **Control Panel**.
- 2 Click **Uninstall a Program**.

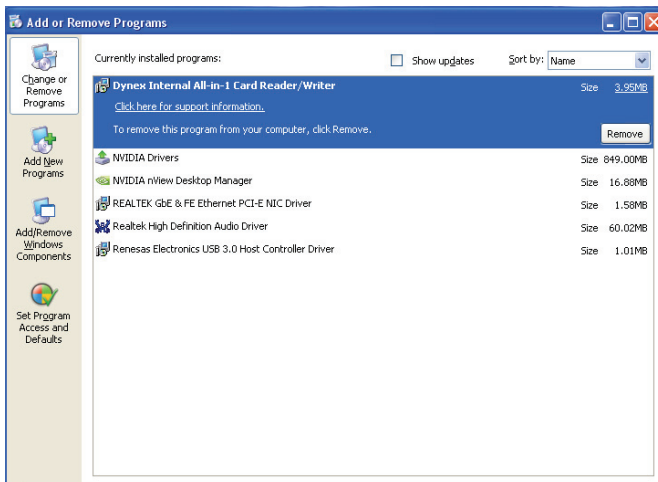
### 3 Locate the software in the list, then click **Remove**.



### 4 Follow the on-screen instructions to uninstall the software.

#### To uninstall the software in Windows XP and Windows 2000:

- 1 Click **Start**, then **Control Panel**.
- 2 Click **Add or Remove Programs**.
- 3 Locate the software in the list, then click **Remove**.



### 4 Follow the on-screen instructions to uninstall the software.

## Formatting a memory card

If your computer has trouble recognizing a new memory card, format the memory card in your camera or by using the following procedure.

**Caution:** *Formatting a memory card permanently deletes all files on the card. Be sure that you copy important files to a computer before formatting a memory card. Do not disconnect the card reader or remove memory cards from the card reader while formatting is in progress.*

### To format a memory card:

- 1 Click **Start**, and then click **My Computer**.
- 2 Under **Removable Storage**, right-click the appropriate memory card icon.
- 3 Click **Format**.
- 4 Type a label name into the *Volume Label* box. The new name appears next to the icon for the card.
- 5 Click **Start**, then **OK** to close the *Warning* dialog box.
- 6 Click **OK** in the *Format Complete* window.
- 7 Click **Close** to finish.

## Troubleshooting

Problem	Suggestions
Memory card does not appear in My Computer or Windows Explorer.	<ul style="list-style-type: none"> <li>• Make sure the card reader has been properly connected to a USB connector on your computer's system board.</li> <li>• Try a different memory card of the same type in the same slot. If the different memory card works, the card reader is functioning and the original memory card is damaged or defective and should be replaced.</li> <li>• Shine a flashlight into the empty card slots. Look to see if any of the pins inside the slots are bent. If so, turn off and unplug your computer, then straighten bent pins with the tip of a mechanical pencil or safety pin. Replace the memory card reader if a pin has been bent to the point of touching another pin.</li> </ul>
Memory card appears in My Computer but errors occur when writing or reading data.	<ul style="list-style-type: none"> <li>• Make sure the memory card is fully inserted into the appropriate card slot on the reader.</li> <li>• Try a different memory card of the same type in the same slot. If the different memory card works, the card reader is functioning and the original memory card is damaged or defective and should be replaced.</li> <li>• Some cards have a read/write security switch on them. Make sure that this switch is not in the lock position before attempting to write data to the card.</li> <li>• Make sure that the amount of data you are attempting to write to the card does not exceed the amount of available free space on the card.</li> <li>• Inspect the ends of the memory card for dirt and dust, which may be covering a metal contact. Clean the contacts with a lint-free cloth and small amounts of isopropyl alcohol. Replace the memory card if necessary.</li> <li>• If errors persist, replace the memory card.</li> </ul>

## Specifications

Chipset	GL 826
Memory card slots (4)	CF UDMA/MD slot SDHC/SD/MMC/xD slot MS Pro HG/MS Pro Duo/MS Pro slot MicroSD/M2 slot
LED indicators	Card detect and data activity
Interface	USB 5-pin connector that connects to a system board USB connector
Operating temperature	32°F~104°F (0°C~40°C)
Storage temperature	-4°F~140°F (-20°C~60°C)
Cable length	19.7 inches (50 cm)
Dimensions (L*W*H)	4.02 × 4.65 × 1 inches (102 × 118 × 25.4 mm)

System Support	Windows 2000, Windows XP, Windows Vista, Windows 7
Certification	FCC Class B, ICES-003
Supported cards	CompactFlash (I & II, UDMA), Micro Drive, Secure Digital (SD, SDHC), MultiMediaCard (MMC, MMC plus), xD Picture card (H type, M type), and Memory Stick (MS, MS Pro, MS Duo, MS Pro Duo, MS Pro HG) cards, Micro SDHC, Micro SD and M2. <b>Notes:</b> <ul style="list-style-type: none"> <li>• Mini SD and RS-MMC require an adapter.</li> <li>• The Micro SD slot shares a signal bus with the SD/MMC slot, so you cannot use both slots at the same time.</li> <li>• The M2 slot shares a signal bus with the MS slot, so you cannot use both slots at the same time.</li> </ul>

*Specifications are subject to revision or update without notice.*

## Legal notices

### FCC Part 15

This device complies with Part 15 of the FCC Rules. Operation of this product is subject to the following two conditions: (1) this device may not cause harmful interference, and (2) this device must accept any interference received, including interference that may cause undesired operation.

This equipment has been tested and found to comply within the limits for a class B digital device, pursuant to Part 15 of the FCC Rules. These limits are designed to provide reasonable protection against harmful interference in a residential installation. This equipment generates, uses, and can radiate radio frequency energy and, if not installed and used in accordance with the instructions, may cause harmful interference to radio communications. However, there is no guarantee that interference will not occur in a particular installation. If this equipment does cause harmful interference to radio or television reception, which can be determined by turning the equipment off and on, the user is encouraged to try to correct the interference by one or more of the following measures:

- Reorient or relocate the receiving antenna.
- Increase the separation between the equipment and receiver.
- Connect the equipment into an outlet on a circuit different from that to which the receiver is connected.
- Consult the dealer or an experienced technician for help.

### Canada ICES-003 statement

This Class B digital apparatus complies with Canadian ICES-003.



## One-year limited warranty

Dynex Products ("Dynex") warrants to you, the original purchaser of this new **DX-CRDRD** ("Product"), that the Product shall be free of defects in the original manufacture of the material or workmanship for a period of one (1) year from the date of your purchase of the Product ("Warranty Period"). This Product must be purchased from an authorized dealer of Dynex brand Products and packaged with this warranty statement. This warranty does not cover refurbished product. If you notify Dynex during the Warranty Period of a defect covered by this warranty that requires service, terms of this warranty apply.

### ***How long does the coverage last?***

The Warranty Period lasts for one year (365 days) from the date you purchased the Product. The purchase date is printed on the receipt you received with the Product.

### ***What does this warranty cover?***

During the Warranty Period, if the original manufacture of the material or workmanship of the Product is determined to be defective by an authorized Dynex repair center or store personnel, Dynex will (at its sole option): (1) repair the Product with new or rebuilt parts; or (2) replace the Product at no charge with new or rebuilt comparable products or parts. Products and parts replaced under this warranty become the property of Dynex and are not returned to you. If service of products and parts are required after the Warranty Period expires, you must pay all labor and parts charges. This warranty lasts as long as you own your Dynex Product during the Warranty Period. Warranty coverage terminates if you sell or otherwise transfer the Product.

### ***How to obtain warranty service?***

If you purchased the Product at a retail store location, take your original receipt and the Product to the store you purchased it from. Make sure that you place the Product in its original packaging or packaging that provides the same amount of protection as the original packaging. If you purchased the Product from an online web site, mail your original receipt and the Product to the address listed on the web site. Make sure that you put the Product in its original packaging or packaging that provides the same amount of protection as the original packaging.

To obtain in-home warranty service for a television with a screen 25 inches or larger, call 1-888-BESTBUY. Call agents will diagnose and correct the issue over the phone or will have an Dynex-approved repair person dispatched to your home.

### ***Where is the warranty valid?***

This warranty is valid only to the original purchaser of the Product in the United States, Canada, and Mexico.

### ***What does the warranty not cover?***

This warranty does not cover:

- Customer instruction
- Installation
- Set up adjustments
- Cosmetic damage
- Damage due to acts of God, such as lightning strikes
- Accident
- Misuse
- Abuse
- Negligence
- Commercial use
- Modification of any part of the Product
- Plasma display panel damaged by static (non-moving) images applied for lengthy periods (burn-in).

This warranty also does not cover:

- Damage due to incorrect operation or maintenance
- Connection to an incorrect voltage supply
- Attempted repair by anyone other than a facility authorized by Dynex to service the Product
- Products sold as is or with all faults
- Consumables, such as fuses or batteries
- Products where the factory applied serial number has been altered or removed

REPAIR REPLACEMENT AS PROVIDED UNDER THIS WARRANTY IS YOUR EXCLUSIVE REMEDY. DYNEX SHALL NOT BE LIABLE FOR ANY INCIDENTAL OR CONSEQUENTIAL DAMAGES FOR THE BREACH OF ANY EXPRESS OR IMPLIED WARRANTY ON THIS PRODUCT, INCLUDING, BUT NOT LIMITED TO, LOST DATA, LOSS OF USE OF YOUR PRODUCT, LOST BUSINESS OR LOST PROFITS. DYNEX PRODUCTS MAKES NO OTHER EXPRESS WARRANTIES WITH RESPECT TO THE PRODUCT, ALL EXPRESS AND IMPLIED WARRANTIES FOR THE PRODUCT, INCLUDING, BUT NOT LIMITED TO, ANY IMPLIED WARRANTIES OF AND CONDITIONS OF MERCHANTABILITY AND FITNESS FOR A PARTICULAR PURPOSE, ARE LIMITED IN DURATION TO THE WARRANTY PERIOD SET FORTH ABOVE AND NO WARRANTIES, WHETHER EXPRESS OR IMPLIED, WILL APPLY AFTER THE WARRANTY PERIOD. SOME STATES, PROVINCES AND JURISDICTIONS DO NOT ALLOW LIMITATIONS ON HOW LONG AN IMPLIED WARRANTY LASTS, SO THE ABOVE LIMITATION MAY NOT APPLY TO YOU. THIS WARRANTY GIVES YOU SPECIFIC LEGAL RIGHTS, AND YOU MAY ALSO HAVE OTHER RIGHTS, WHICH VARY FROM STATE TO STATE OR PROVINCE TO PROVINCE.

Contact Dynex:

For customer service please call 1-800-305-2204

[www.dynexproducts.com](http://www.dynexproducts.com)

Distributed by Best Buy Purchasing, LLC

7601 Penn Avenue South, Richfield, Minnesota, U.S.A. 55423-3645

© 2010 BBY Solutions, Inc.

All rights reserved. DYNEX is a trademark of BBY Solutions, Inc. Registered in some countries. All other products and brand names are trademarks of their respective owners.









**DYNEX**™

[www.dynexproducts.com](http://www.dynexproducts.com) (800) 305-2204

Distributed by Best Buy Purchasing, LLC

7601 Penn Ave. South, Richfield, MN 55423 U.S.A.

© 2010 BBY Solutions, Inc. All rights reserved.

DYNEX is a trademark of BBY Solutions, Inc. Registered in some countries. All other products and brand names are trademarks of their respective owners..

ENGLISH  
10-0881

## Free Manuals Download Website

<http://myh66.com>

<http://usermanuals.us>

<http://www.somanuals.com>

<http://www.4manuals.cc>

<http://www.manual-lib.com>

<http://www.404manual.com>

<http://www.luxmanual.com>

<http://aubethermostatmanual.com>

Golf course search by state

<http://golfingnear.com>

Email search by domain

<http://emailbydomain.com>

Auto manuals search

<http://auto.somanuals.com>

TV manuals search

<http://tv.somanuals.com>