

DX-WLC1401 Wireless Keyboard and Mouse Combo



Before using your new product, please read these instructions to prevent any damage.

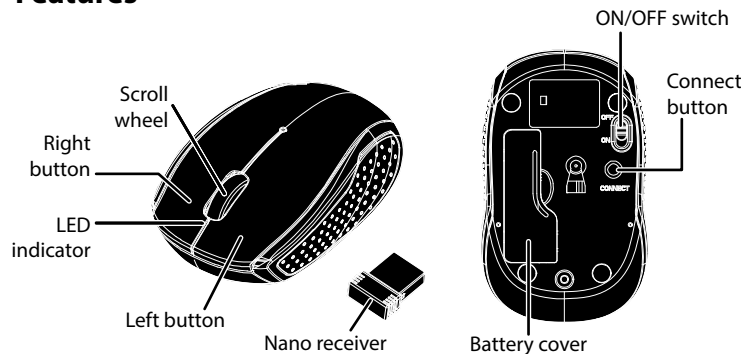
Package contents

- Wireless keyboard
- Wireless mouse and nano receiver
- Quick Setup Guide

System requirements

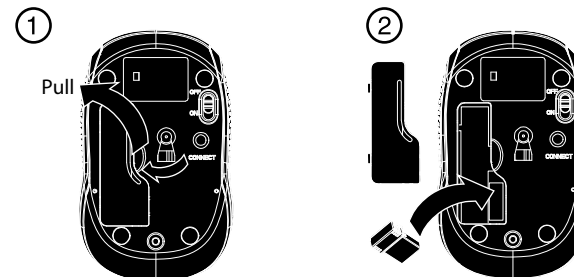
- Windows® 8, Windows® 7, Windows Vista®, or Windows® XP
- One available USB port

Features



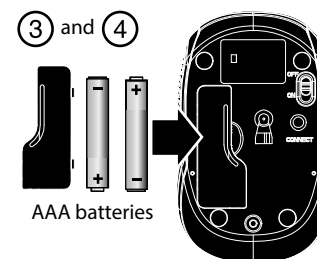
Installing the mouse batteries and removing the nano receiver

- 1 Take the battery cover off.
- 2 Remove the nano receiver.

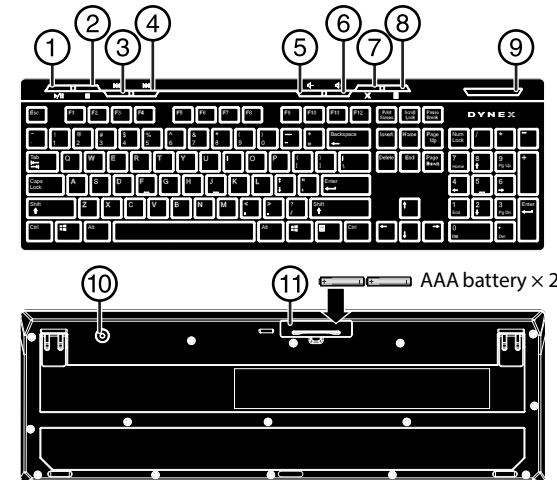


- 3 Insert the batteries as shown inside the battery compartment.
- 4 Replace the cover.

Caution: Insert the battery with the correct orientation, according to the instruction label on the mouse.



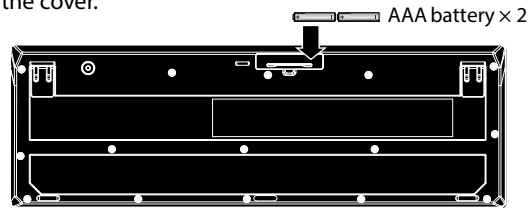
Keyboard buttons Media player hot keys



#	Icon	Function	Description
1	▶/	Play/Pause	Switch between playing and pausing media.
2	■	Stop (Media)	Stop playing the media in the media player.
3	◀◀	Previous	Switch to the previous media track.
4	▶▶	Next	Switch to the next media track.
5	◀-	Volume down (Voice-)	Decrease the computer's sound volume.
6	▶+	Volume up (Voice+)	Increase the computer's sound volume.
7	✖	Mute	Mute (turns off) the computer's sound.
8	☰	Calculator	Start Microsoft calculator.
9	LED indicator		Low battery and pairing indicator.
10	Connect button		Press to initiate pairing with your computer.
11	Battery cover		Remove to install or replace the batteries.

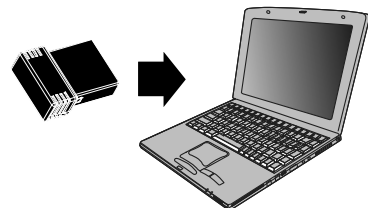
Installing the keyboard batteries

- 1 Take the battery cover off.
- 2 Insert the batteries as shown inside the battery compartment.
- 3 Replace the cover.



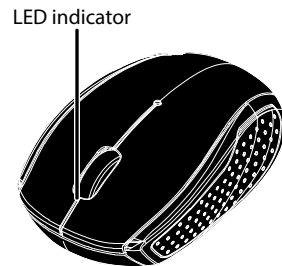
Setting up the connection between the nano receiver, mouse and keyboard

- 1 Plug the nano receiver into the USB port on your computer.



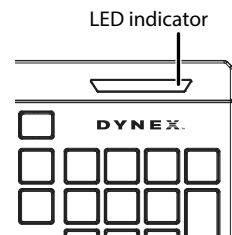
- 2 If the mouse or keyboard does not work, do the following:
Re-plug the nano receiver into the USB port on your computer, then press the connect button on the mouse and keyboard. If the mouse or keyboard does not work after 10 seconds, pair them again by pressing the connect button on the mouse or keyboard. (The receiver has auto-pairing function).
- 3 The LED indicator on the mouse and keyboard flashes steadily when it is in pairing mode and stops blinking when it is successfully paired with the receiver.
- 4 When the battery gets low, the battery indicator on the mouse or keyboard will start to blink.

Mouse indicator



Power ON	Red LED is on for 10 sec.
Low battery warning	Red LED blinks for 10 sec.
Pairing	Red LED blinks.
When paired or failed after 10 sec.	LED is off.

Keyboard indicator



Power ON	Red LED is on for 10 sec.
Low battery warning	Red LED blinks for 10 sec.
Pairing	Red LED blinks.
When paired or failed after 10 sec.	LED is off.

Cleaning your mouse and keyboard

- Wipe the mouse and keyboard with a damp, lint-free cloth.

Specifications

- Mouse: 3V C.C. - 10mA
- Keyboard: 3V C.C - 4mA

Troubleshooting

- Make sure that your computer meets the system requirements.
- Only use the mouse on a clean, flat, non-slippery surface to ensure smooth and accurate cursor action.
- Avoid using your mouse on reflective, transparent, or metallic surfaces.
- If your mouse or keyboard stops working:
 - Make sure your mouse or keyboard and nano receiver are paired by pressing the connect button on the mouse or keyboard.
 - Replace the mouse or keyboard batteries.

Legal notices

FCC Statement

This device complies with Part 15 of the FCC Rules. Operation is subject to the following two conditions: (1) this device may not cause harmful interference, and (2) this device must accept any interference received, including interference that may cause undesired operation. This equipment has been tested and found to comply with the limits for a Class B digital device, pursuant to Part 15 of the FCC Rules. These limits are designed to provide reasonable protection against harmful interference in a residential installation. This equipment generates, uses and can radiate radio frequency energy and, if not installed and used in accordance with the instructions, may cause harmful interference to radio communications. However, there is no guarantee that interference will not occur in a particular installation. If this equipment does cause harmful interference to radio or television reception, which can be determined by turning the equipment off and on, the user is encouraged to try to correct the interference by one or more of the following measures:

- Reorient or relocate the receiving antenna.
- Increase the separation between the equipment and receiver.
- Connect the equipment into an outlet on a circuit different from that to which the receiver is connected.
- Consult the dealer or an experienced radio/TV technician for help.

Warning: Changes or modifications not expressly approved by the party responsible for compliance could void the user's authority to operate the equipment.

RSS-Gen and RSS-210 statement

This device complies with Industry Canada license-exempt RSS standard(s).

Operation is subject to the following two conditions: (1) this device may not cause interference, and (2) this device must accept any interference, including interference that may cause undesired operation of the device.

Le présent appareil est conforme aux CNR d'Industrie Canada applicables aux appareils radio exempts de licence. L'exploitation est autorisée aux deux conditions suivantes : (1) l'appareil ne doit pas produire de brouillage, et (2) l'utilisateur de l'appareil doit accepter tout brouillage

radioélectrique subi, même si le brouillage est susceptible d'en compromettre le fonctionnement.

RSS-102 statement

This equipment complies with Industry Canada radiation exposure limits set forth for an uncontrolled environment.

Cet équipement est conforme à l'exposition aux rayonnements Industry Canada limites établies pour un environnement non contrôlé.

One-year limited warranty

For complete warranty, visit www.dynexproducts.com.

Contact Dynex

For customer service call 1-800-305-2204

www.dynexproducts.com

DYNEX is a registered trademark of BBY Solutions, Inc. Registered in some countries. Distributed by Best Buy Purchasing, LLC, 7601 Penn Ave South, Richfield, MN 55423 U.S.A. ©2013 BBY Solutions, Inc. All Rights Reserved.

Free Manuals Download Website

<http://myh66.com>

<http://usermanuals.us>

<http://www.somanuals.com>

<http://www.4manuals.cc>

<http://www.manual-lib.com>

<http://www.404manual.com>

<http://www.luxmanual.com>

<http://aubethermostatmanual.com>

Golf course search by state

<http://golfingnear.com>

Email search by domain

<http://emailbydomain.com>

Auto manuals search

<http://auto.somanuals.com>

TV manuals search

<http://tv.somanuals.com>