

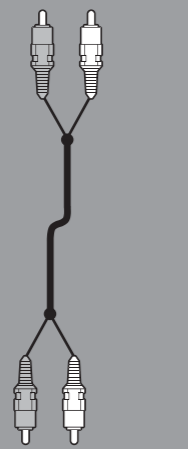
15"/19"/22" LCD TV QUICK SETUP GUIDE DX-15L150A11/DX-19L150A11/DX-22L150A11



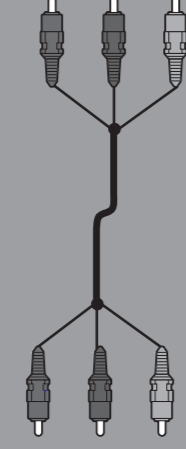
Remote control and 2 AAA batteries



AC power cord



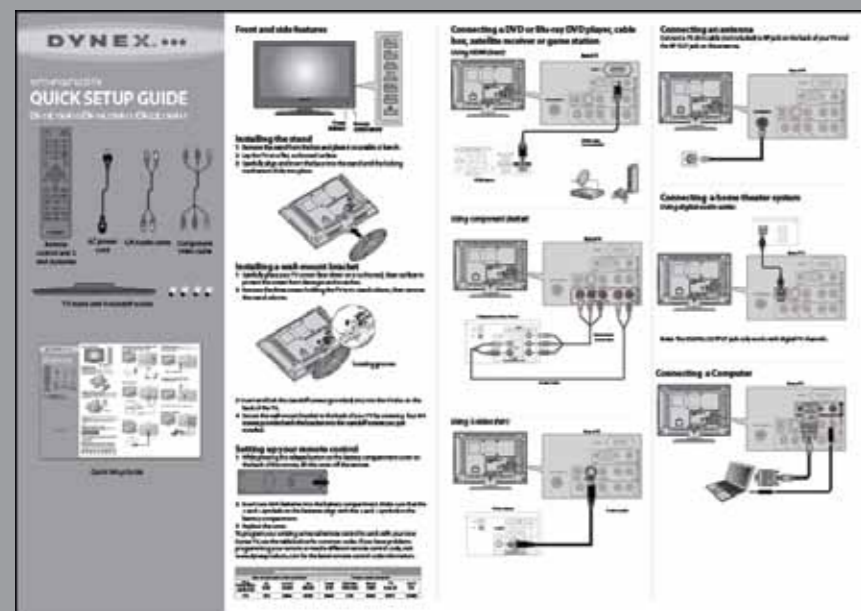
L/R Audio cable



Component video cable

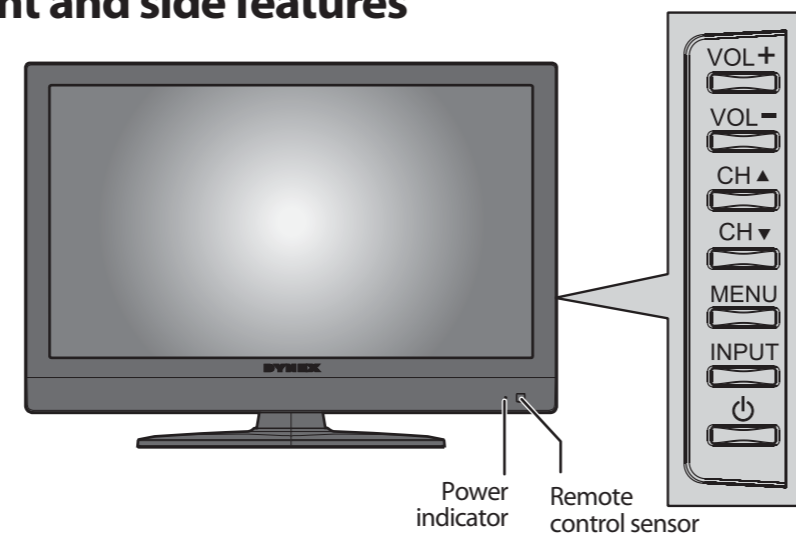


TV stand and 4 standoff screws



Quick Setup Guide

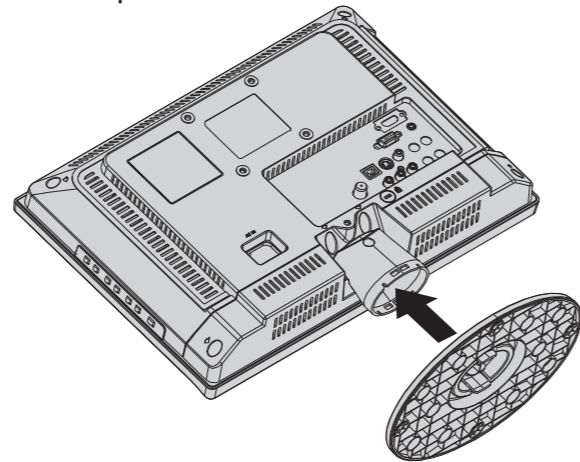
Front and side features



Power indicator Remote control sensor

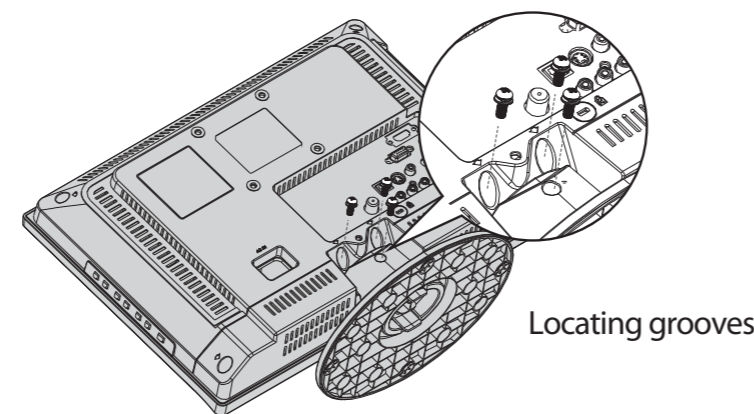
Installing the stand

- 1 Remove the stand from the box and place it on a table or bench.
- 2 Lay the TV on a flat, cushioned surface.
- 3 Carefully align and insert the base into the stand until the locking mechanism clicks into place.



Installing a wall-mount bracket

- 1 Carefully place your TV screen face-down on a cushioned, clean surface to protect the screen from damages and scratches.
- 2 Remove the three screws holding the TV to its stand column, then remove the stand column.

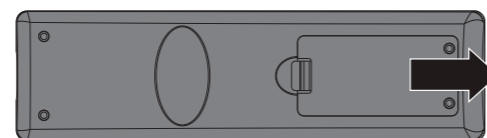


Locating grooves

- 3 Insert and lock the standoff screws (provided) into the 4 holes on the back of the TV.
- 4 Secure the wall-mount bracket to the back of your TV by screwing four M4 screws provided with the bracket into the standoff screws you just installed.

Setting up your remote control

- 1 While pressing the release button on the battery compartment cover on the back of the remote, lift the cover off the remote.



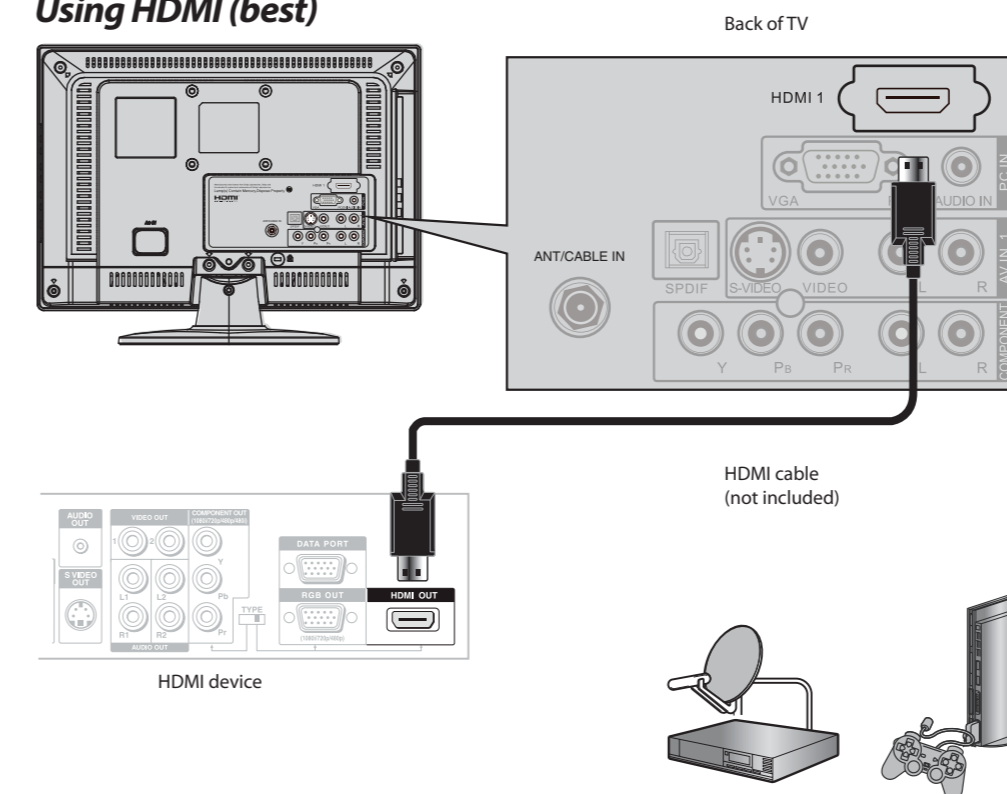
- 2 Insert two AAA batteries into the battery compartment. Make sure that the + and - symbols on the batteries align with the + and - symbols in the battery compartment.
- 3 Replace the cover.

To program your existing universal remote control to work with your new Dynex TV, see the table below for common codes. If you have problems programming your remote or need a different remote control code, visit www.dynexproducts.com for the latest remote control code information.

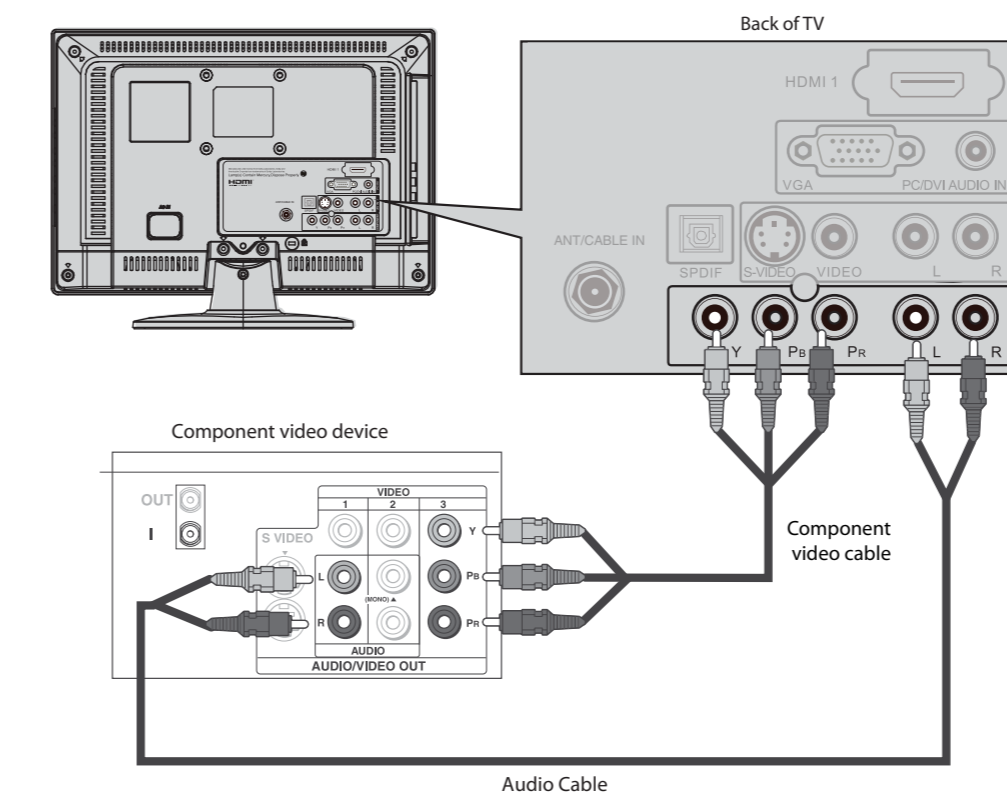
Universal remote control TV codes (for all Dynex TVs manufactured after Jan. 1, 2007)										
Universal remote control makers and models				Set-top box makers and models						
Philips PHDV05, PHDS05, PMDV08, PVDV08	RCA RCL807	One for All URC-6690	Sony RM-VL600	Comcast M1057	Dish Network VIP508, VIP622	Motorola DR000	TIVO Series 3, HD	DirectTV RC23		
115	135	0464	8043	0463	720	0463	0091	10463		

Connecting a DVD or Blu-ray DVD player, cable box, satellite receiver or game station

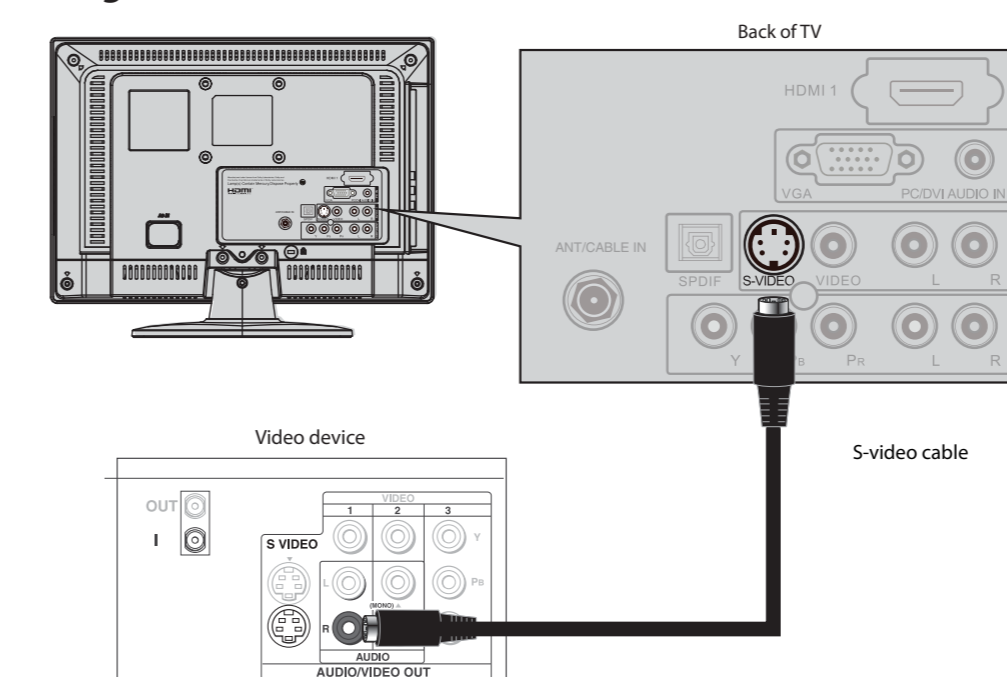
Using HDMI (best)



Using component (better)

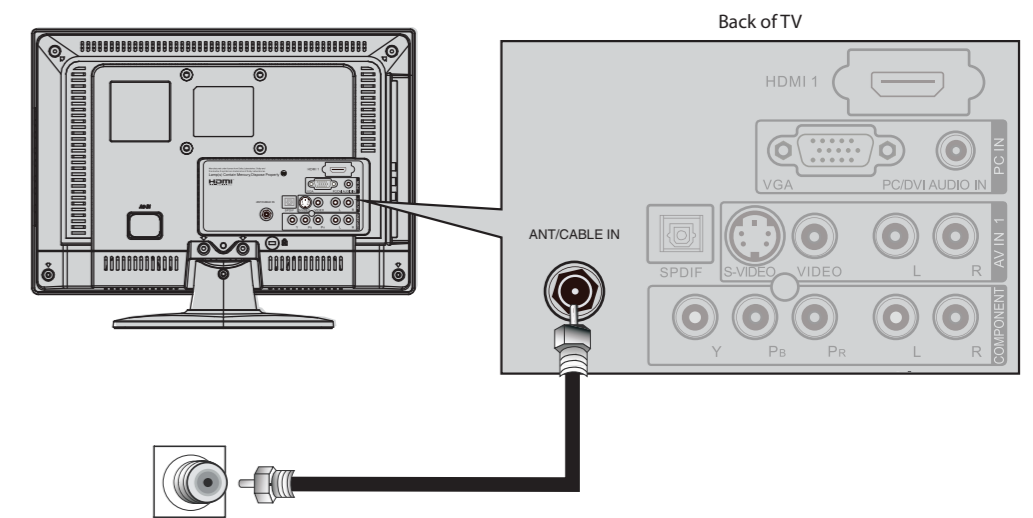


Using S-video (fair)



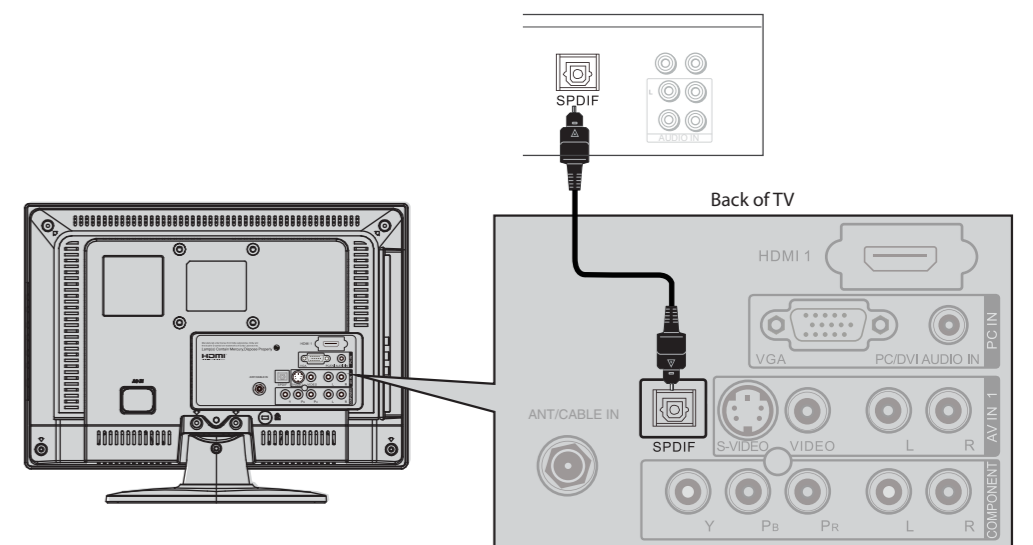
Connecting an antenna

Connect a 75 ohm cable (not included) to RF jack on the back of your TV and the RF OUT jack on the antenna.



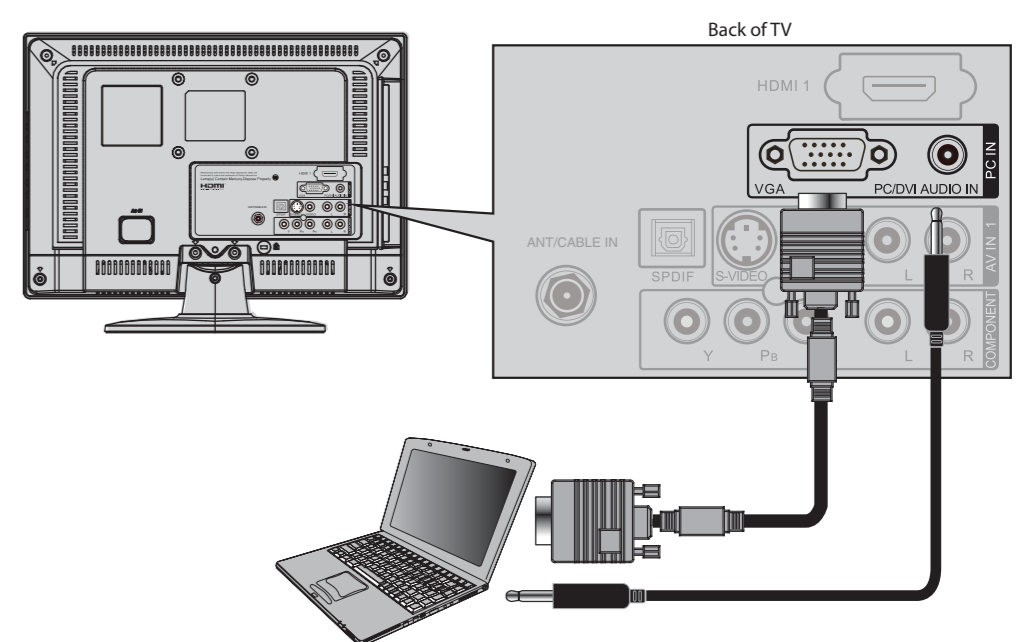
Connecting a home theater system

Using digital audio cable:



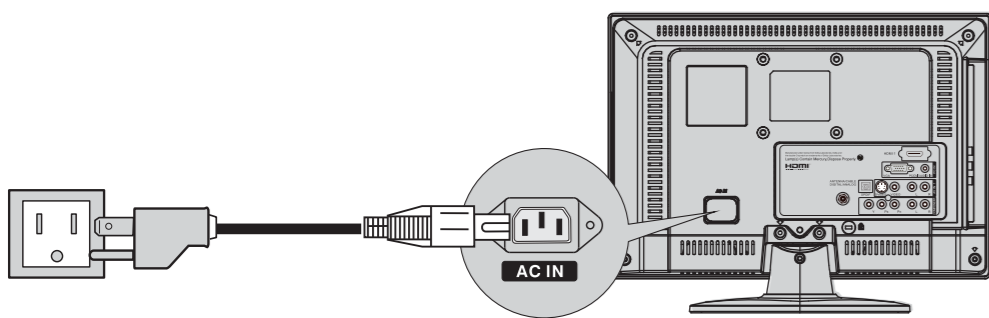
Note: The DIGITAL OUTPUT jack only works with digital TV channels.

Connecting a Computer



Connecting power

Connect the power cable to the AC IN jack on the back of the TV, then connect the other end to a power outlet.

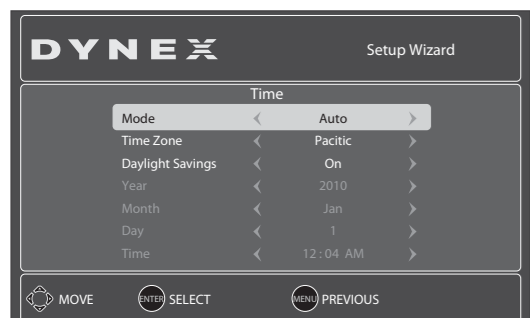


Turning on your TV for the first time

1 Plug in your TV and turn it on. The initial *Setup Wizard* opens.



2 Press **▲** or **▼** to highlight an option and press **◀** or **▶** to change the setting. Options include:



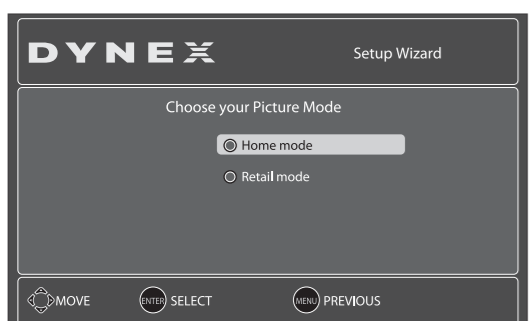
Mode-Select Manual to set date/time manually or Auto to have them set automatically.

Time Zone-Select your time zone

Daylight Savings-If your area uses daylight savings

If you select **Manual**, press **▲** or **▼** to highlight an option, then press **◀** or **▶** change the setting.

3 When you are done, press **ENTER** to move to the next screen. The *Choose your Picture Mode* screen opens.



4 Press **▲** or **▼** to highlight **Home Mode** (recommended) or **Retail Mode**. If you selected **Home Mode**, the *Choose your TV source* screen opens.

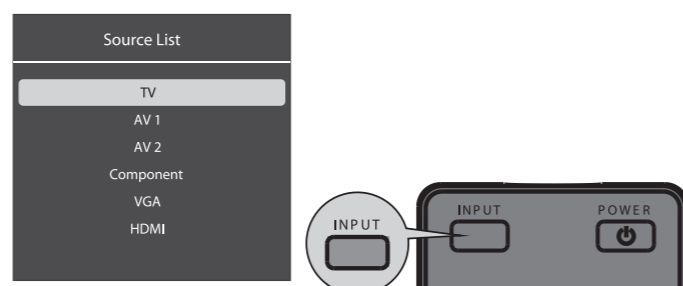


5 Press **▲** or **▼** to highlight **Antenna**, **Cable**, or **Cable/Satellite Box**, then press **▶**. If you selected **Antenna** or **Cable**, your TV automatically scans for available channels. If you selected **Cable/Satellite Box**, you are asked to select the correct input source for your set top box.

6 Press **EXIT** to close the menu, then select the input source through the *INPUT SOURCE* menu.

Selecting the video input source

1 Press **INPUT**, press **▲** or **▼** to highlight a source, then press **ENTER**. You can also press any of the video source buttons directly.

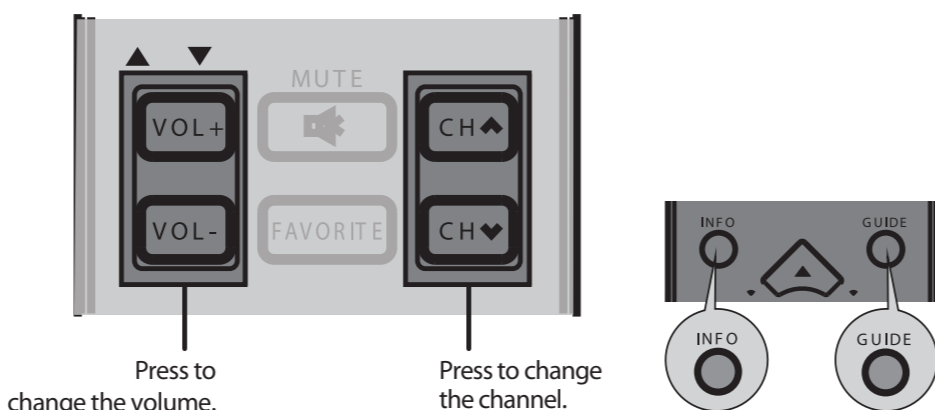


Adjusting the volume

- Press **VOL+** or **VOL-** to change the volume.
- Press **MUTE** to turn off the sound.

Selecting a channel

- To move to a different channel in the channel list, press **CH▲** or **CH▼**.
- OR
- Enter the channel number directly using the number buttons.



Press to change the volume.

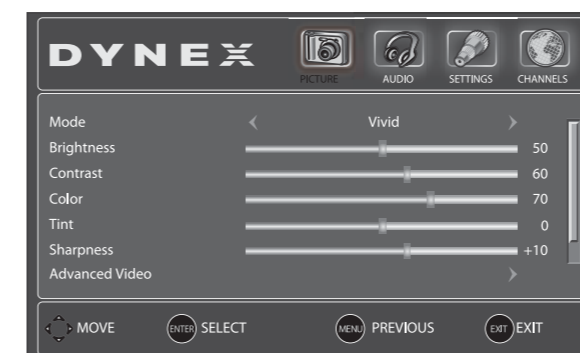
Press to change the channel.

Viewing channel information

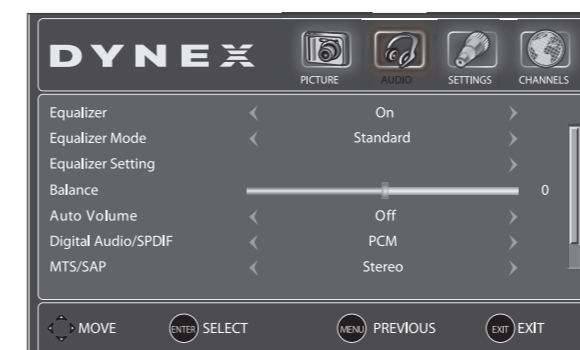
- Press **INFO** to view an information banner. The information banner shows the current program information such as channel number, video input source, and resolution.
- **Digital mode information**—Displays the channel number, station name, channel label, broadcast program name, TV rating, signal type, audio information, resolution, CC mode, current time, and current program start and end times.
- **Analog mode information**—Displays channel number, channel label (if present), signal type, audio information, and resolution.
- Press **GUIDE** to show the digital program guide, which may display available programs, program times, and program summaries, depending on the information provided by the broadcaster.

On-screen menu overview

PICTURE menu



AUDIO menu



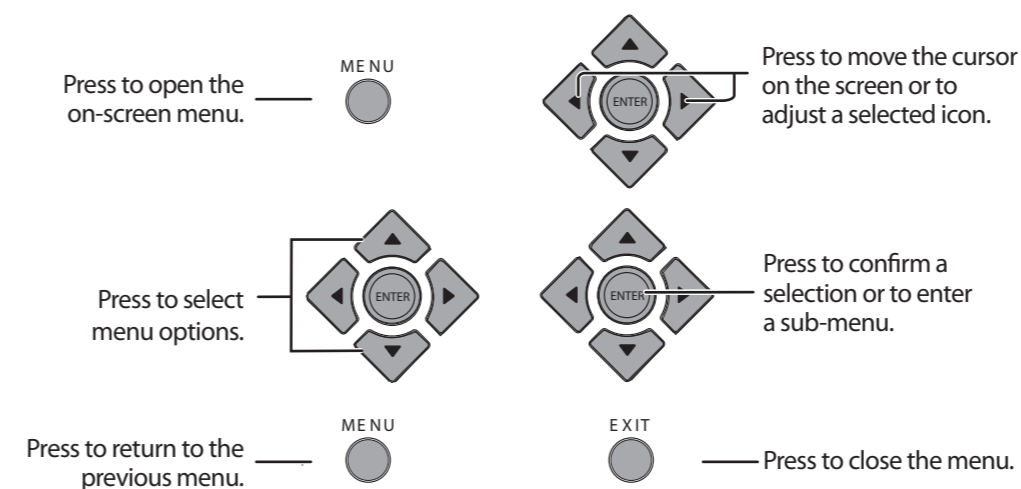
SETTINGS menu



CHANNELS menu



Navigating menus with your remote control



DYNEX™

One-year limited warranty

Visit www.dynexproducts.com for details.

Need additional help?

See your *User Guide*! This comprehensive guide includes everything from basic how-to steps to more advanced features.

We're here for you

www.dynexproducts.com

For customer service, call:

1 800-305-2204 (U.S./Canada markets)

01 800-926-3020 (Mexico market)

Distributed by Best Buy Purchasing, LLC

7601 Penn Avenue South, Richfield, MN USA 55423-3645

Best Buy Imports, S. de R.L. de C.V. Av. Santa Fe 485, Segundo Piso, Colonia Cruz Manca, Programa Parcial de Desarrollo Santa Fe, Delegación Cuajimalpa, Distrito Federal, México 05349

RFC#BBI0802114Q2

© 2009 BBY Solutions, Inc.

All rights reserved. DYNEX is a trademark of BBY Solutions, Inc. Registered in some countries. All other products and brand names are trademarks of their respective owners.

Free Manuals Download Website

<http://myh66.com>

<http://usermanuals.us>

<http://www.somanuals.com>

<http://www.4manuals.cc>

<http://www.manual-lib.com>

<http://www.404manual.com>

<http://www.luxmanual.com>

<http://aubethermostatmanual.com>

Golf course search by state

<http://golfingnear.com>

Email search by domain

<http://emailbydomain.com>

Auto manuals search

<http://auto.somanuals.com>

TV manuals search

<http://tv.somanuals.com>