

# **VIA USB 2.0 PCI Host Add-On Card**

## **Installation Guide**

**Revision 2.5.8**

# INDEX

<b>Trademarks</b> .....	3
<b>Introduction</b> .....	3
<b>System Requirement</b> .....	3
<b>Hardware Installation</b> .....	3
<b>Driver Installation</b> .....	4
<b>Windows 98 &amp; 2000 Installation</b> .....	4
<b>Windows ME &amp; XP SP1 Installation</b> .....	7
<b>Uninstall Driver</b> .....	10

## ■ Trademarks

All names and products mentioned below are registered trademarks of their respective companies.

## ■ Introduction

Congratulations on your purchase of the VIA USB2.0 hi-speed host add on card, it provides up to 480Mbps bandwidth that performs 40 times faster than USB1.1 of 12Mbps with USB2.0 devices. It is also backwards compatible to USB 1.1 peripherals for your PC system.

## ■ System Requirement

This setup program will install the driver for VIA USB 2.0 Host Controller. Before you start to run the setup program, please make sure your computer is an IBM PC-compatible system. This driver can be used either the following operating systems:

- Windows98
- Windows98 Second Edition.
- Windows Millennium.
- Windows 2000.
- Windows XP SP1.

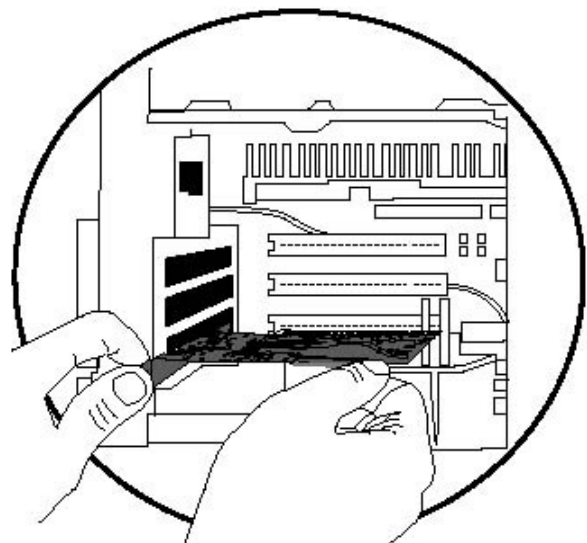
## ■ Hardware installation

### Before installation

- **Touch the exposed metal casing on your computer's power supply before taking the card from its anti-static package. This safely discharges any static electricity that may have built up on your body.**
- **Handle the card by the PCB edge only. Avoid touching the gold-plated PCI bus connector or the electronic components.**

### 1. Turn your computer off and disconnect the power cord before installing the card.

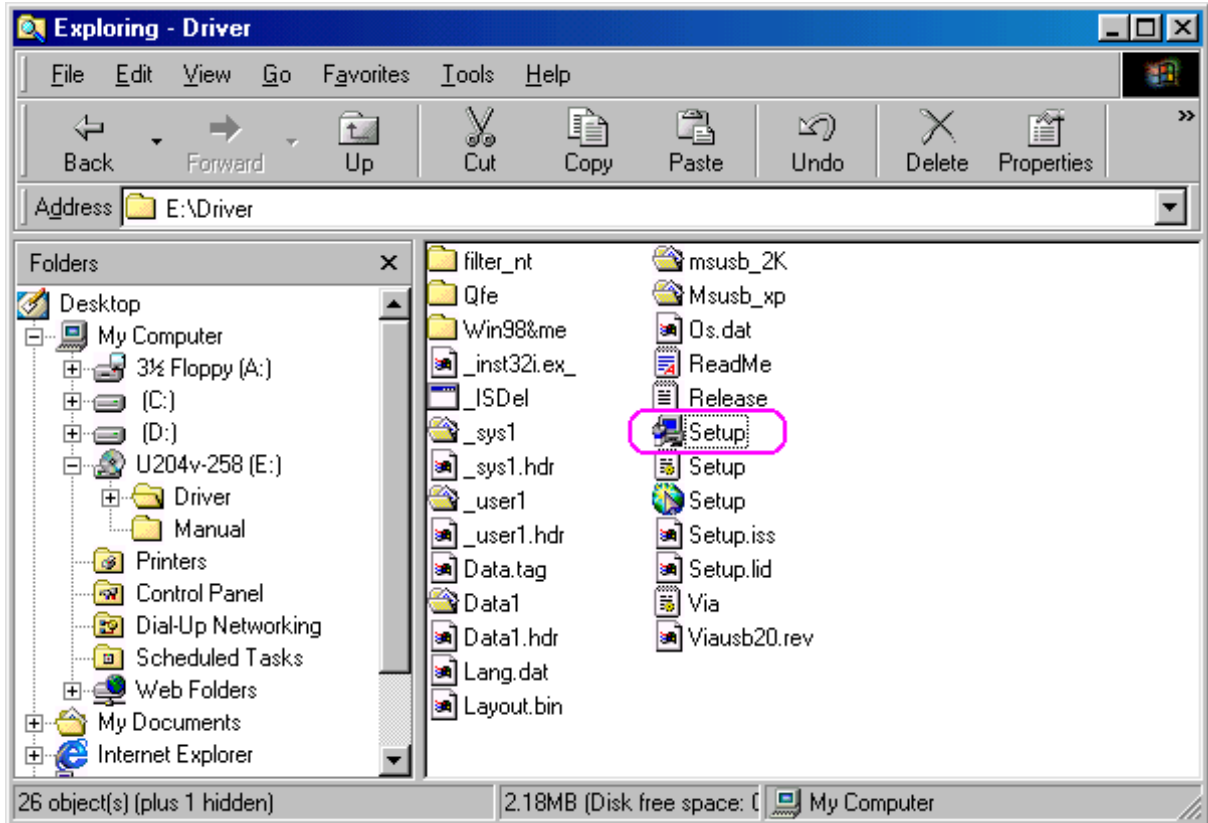
2. Remove your computer's cover. (Please refer to your computer owners manual for instructions on removing the cover)
3. Push the host card firmly into a free PCI slot and ensure the gold-plated connector is seated evenly in the PCI slot.
4. Replace the screw in the bracket to avoid the card falling out accidentally when plugging in the USB cable.
5. Before replacing your computer's cover, you must make sure the tool and screw is clean inside the PC.
6. Connect AC power cord again.



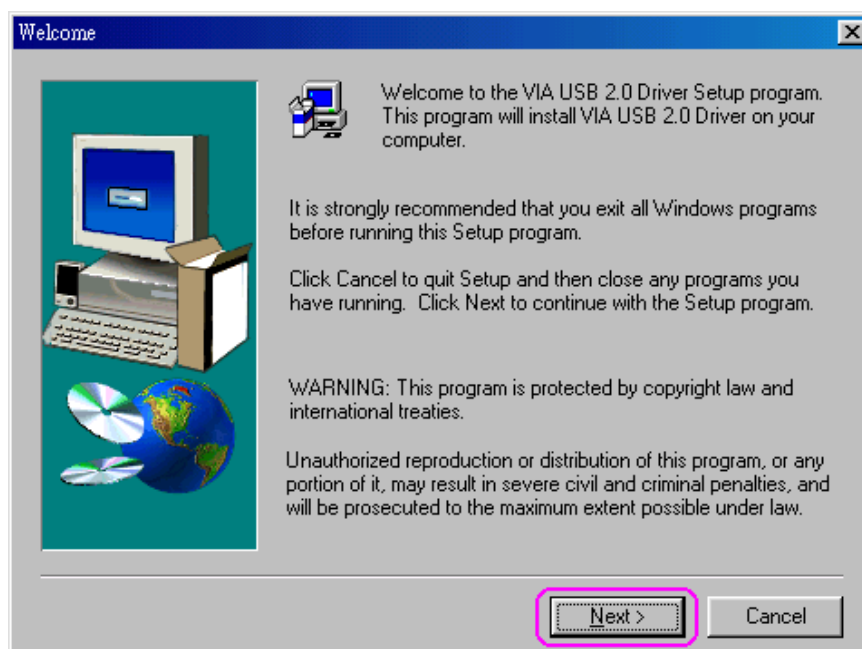
## ■ Driver Installation

### Windows 98 & 2000 Installation

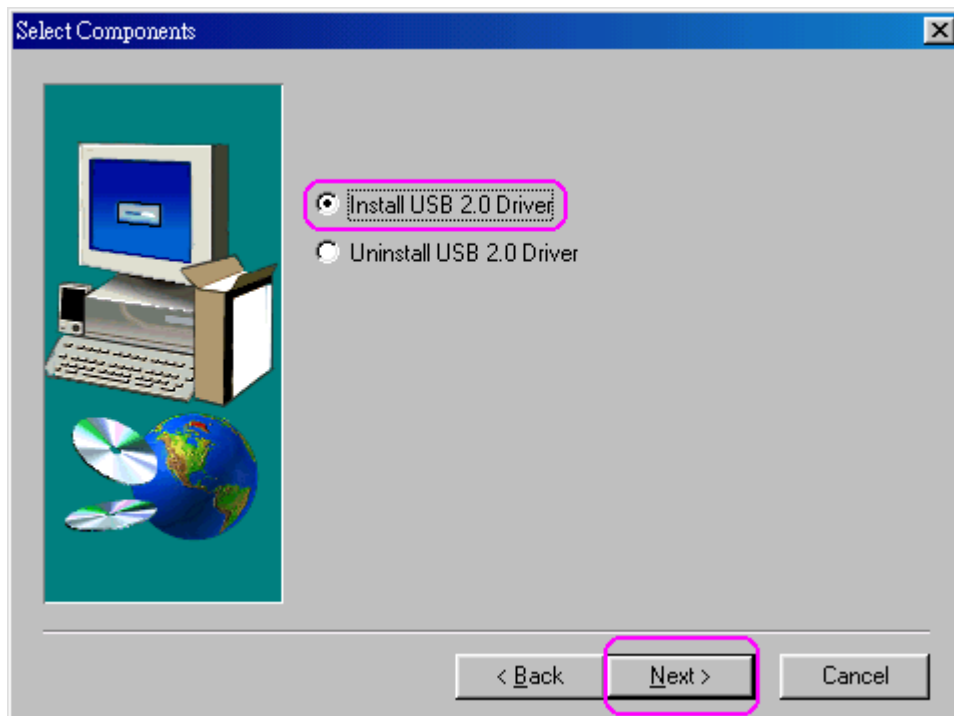
1. Insert the supplied “Setup program CD” and execute the setup program by double clicking on the “SETUP.exe” file.



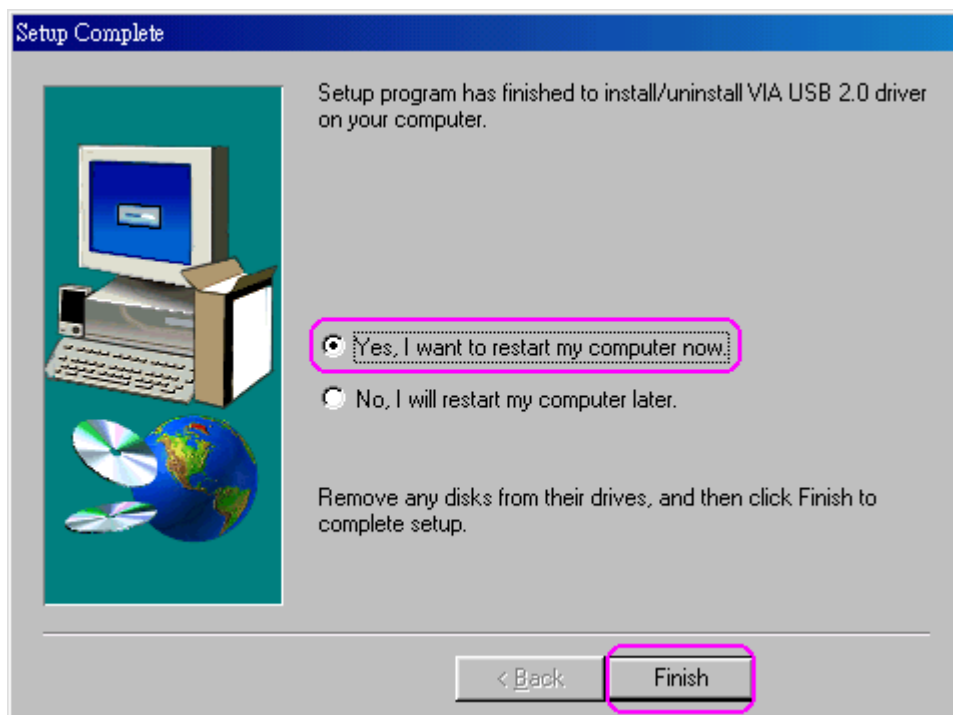
2. Click “Next”.



3. Select **“Install USB 2.0 Driver”** then Click **“Next”**.



4. Click **“Finish”** to install. This will restart your system. Please remember to save your files before you click the **“Finish”** button.



## ■ Verify the PCI card has properly installed

To confirm that the USB 2.0 Hi-speed PCI add on card has been correctly installed, check your Device Manager on the Windows system after restart. You should see an entry titled “**Universal Serial Bus Controllers**”. Clicking on the “+” sign for next sub- entry should reveal the following added readings:

**VIA Tech 3038 PCI to USB Universal Host Controller**

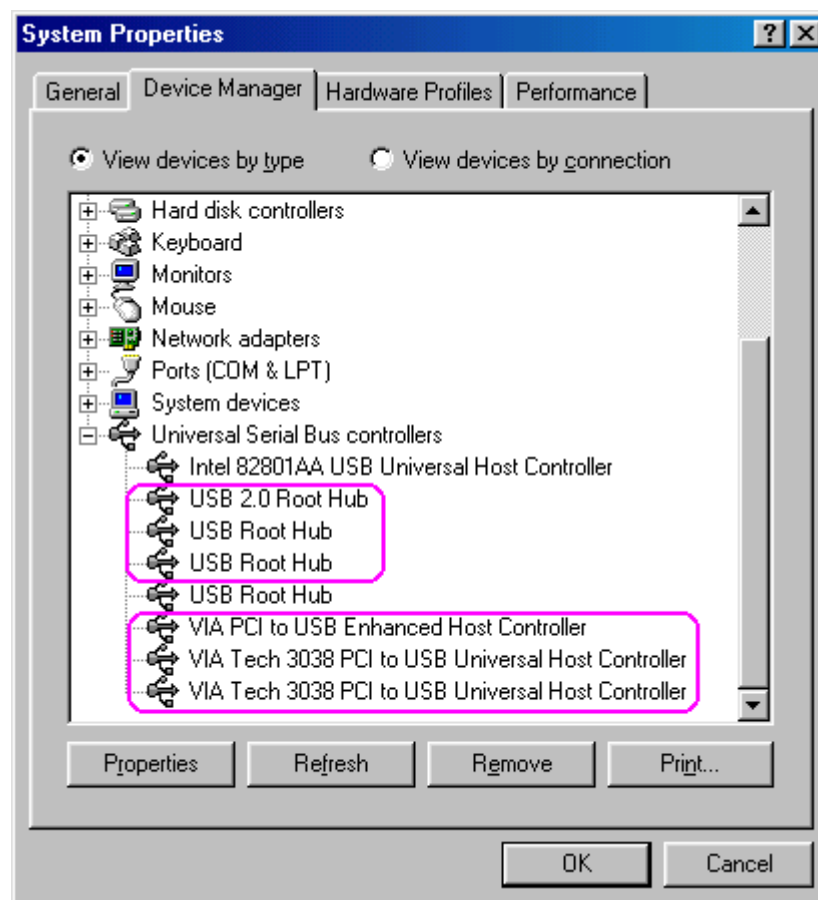
**VIA Tech 3038 PCI to USB Universal Host Controller**

**VIA PCI to USB Enhanced Host Controller**

**USB2.0 Root Hub Device**

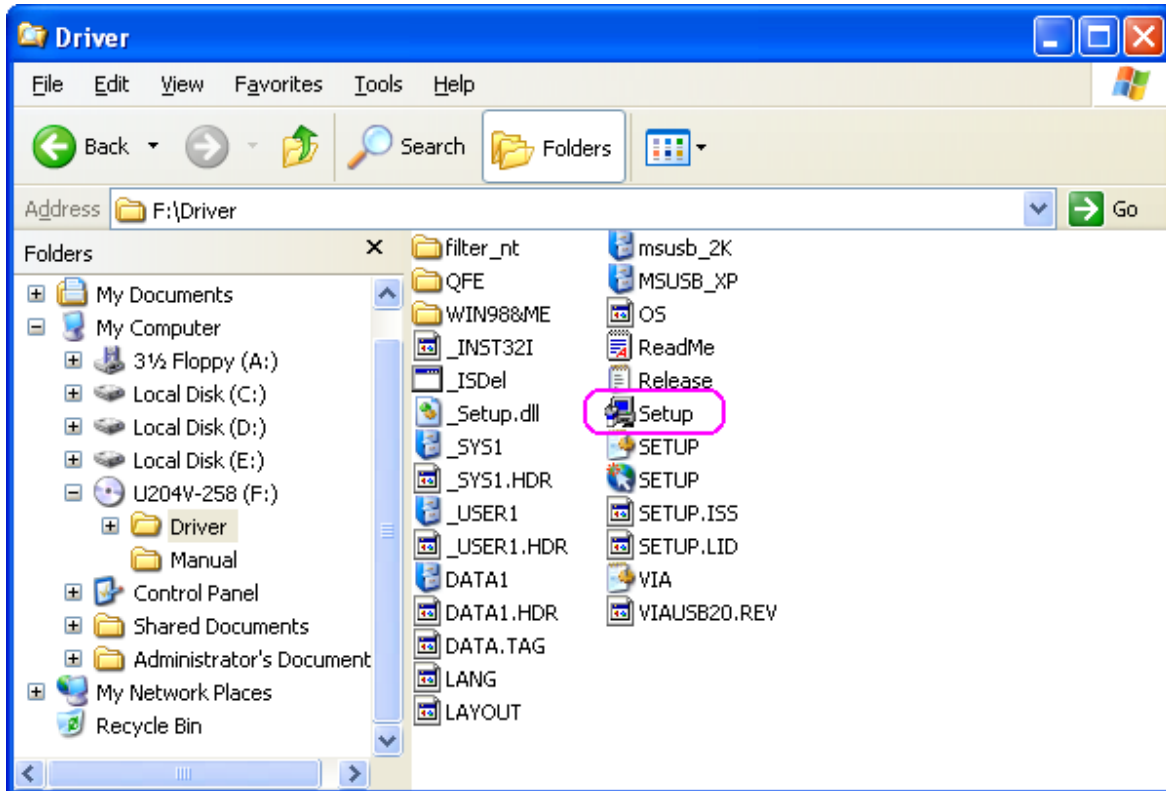
**USB Root Hub**

**USB Root Hub**

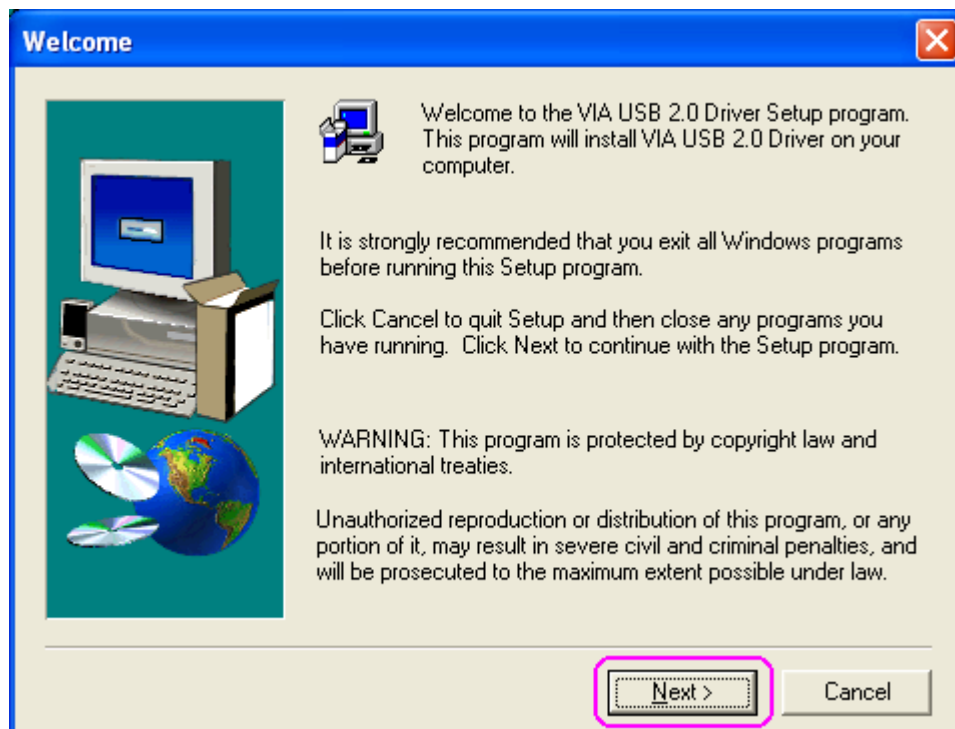


## Windows ME & XP SP1 Installation

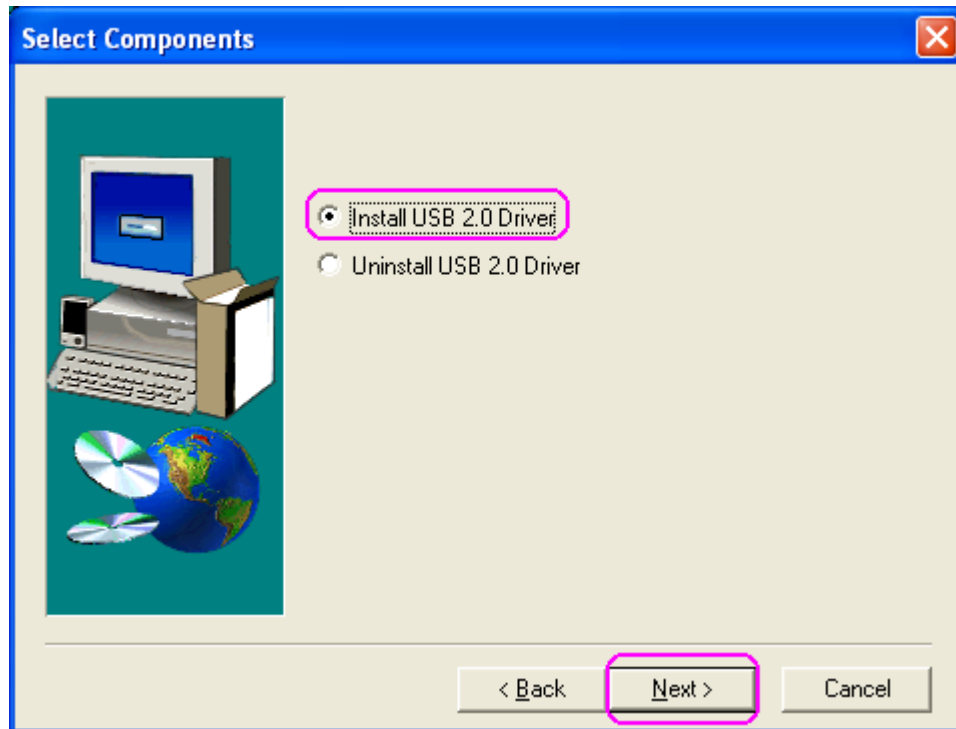
1. Insert the supplied “**Setup program CD**” and execute the setup program by double clicking on the “**SETUP.exe**” file.



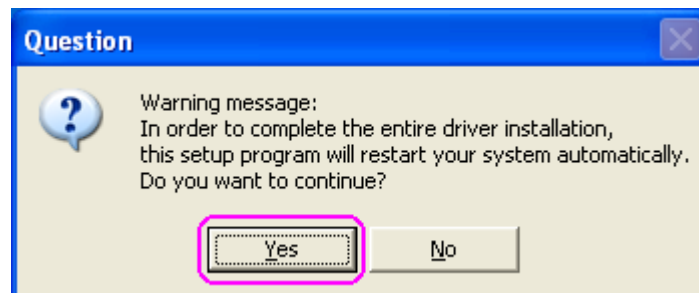
2. Press “**Next**”



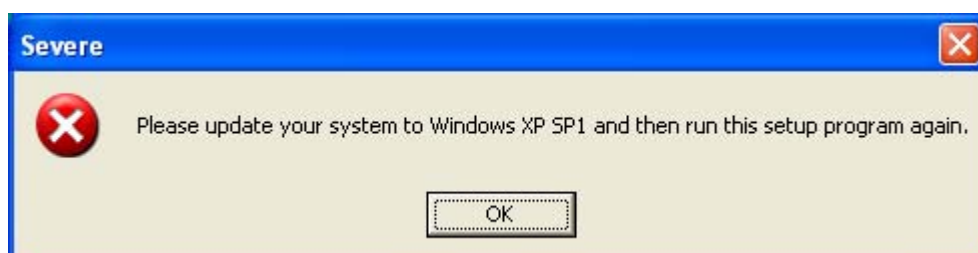
3. Select “Install USB 2.0 Driver” and click “Next”.



4. Click “Yes” to continue, the system will restart when the driver has installed completely.



**Note:** Due to legal issue, Microsoft EHCI drivers for Windows XP are not included inside this package. If the following window appears, please update your system to Windows XP SP1 then run the setup program again.

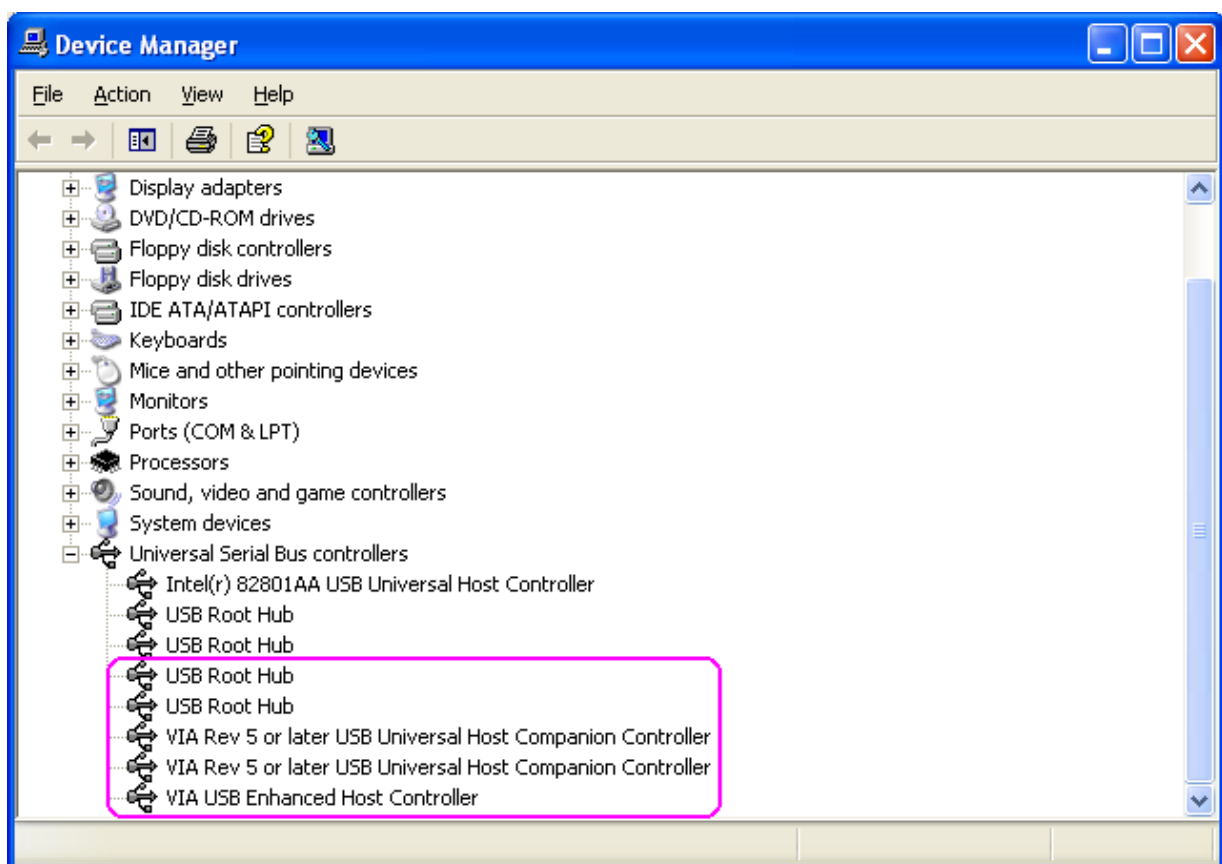




## ■ Verify the PCI card has properly installed

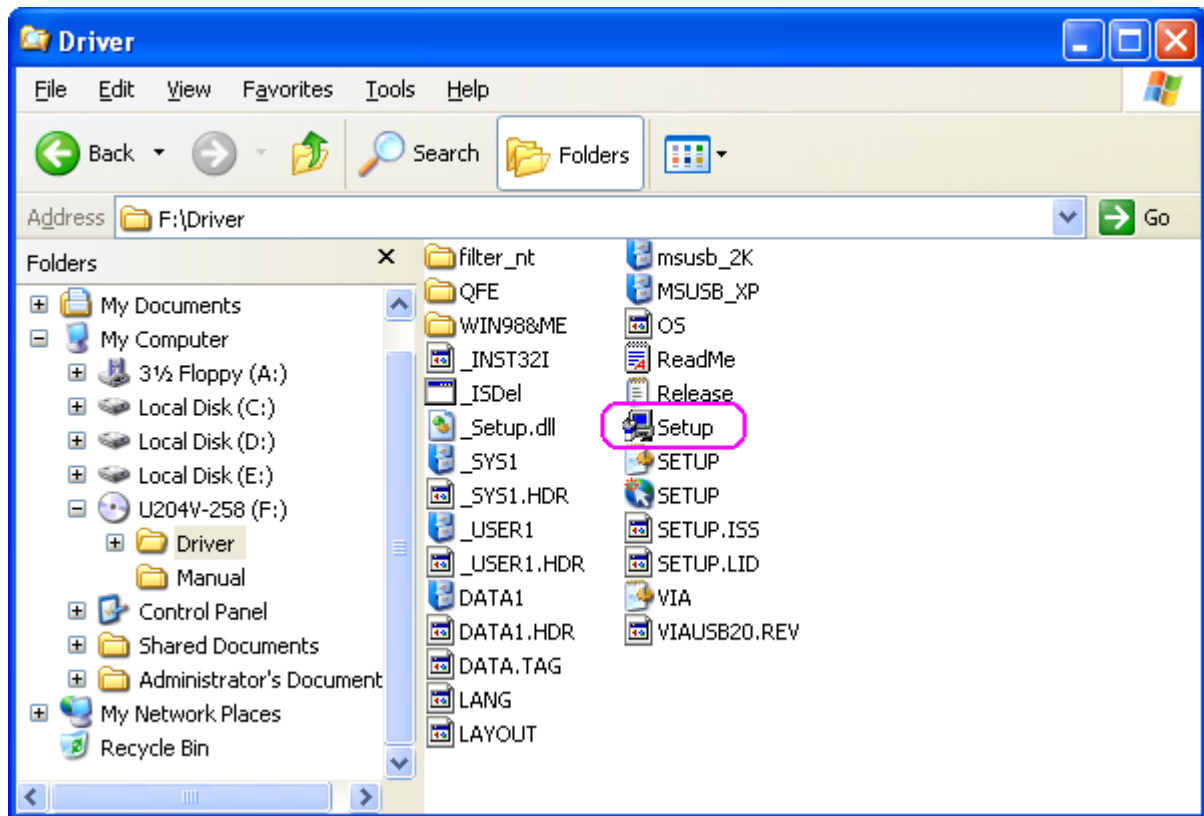
To confirm that the USB 2.0 Hi-speed PCI add on card has been correctly installed, check your Device Manager on the Windows system after restart. You should see an entry titled “**Universal Serial Bus Controllers**”. Clicking on the “+” sign for next sub- entry should reveal the following added readings:

**VIA Rev 5 or later USB Universal Host Companion Controller**  
**VIA Rev 5 or later USB Universal Host Companion Controller**  
**VIA PCI to USB Enhanced Host Controller**  
**USB Root Hub**  
**USB Root Hub**

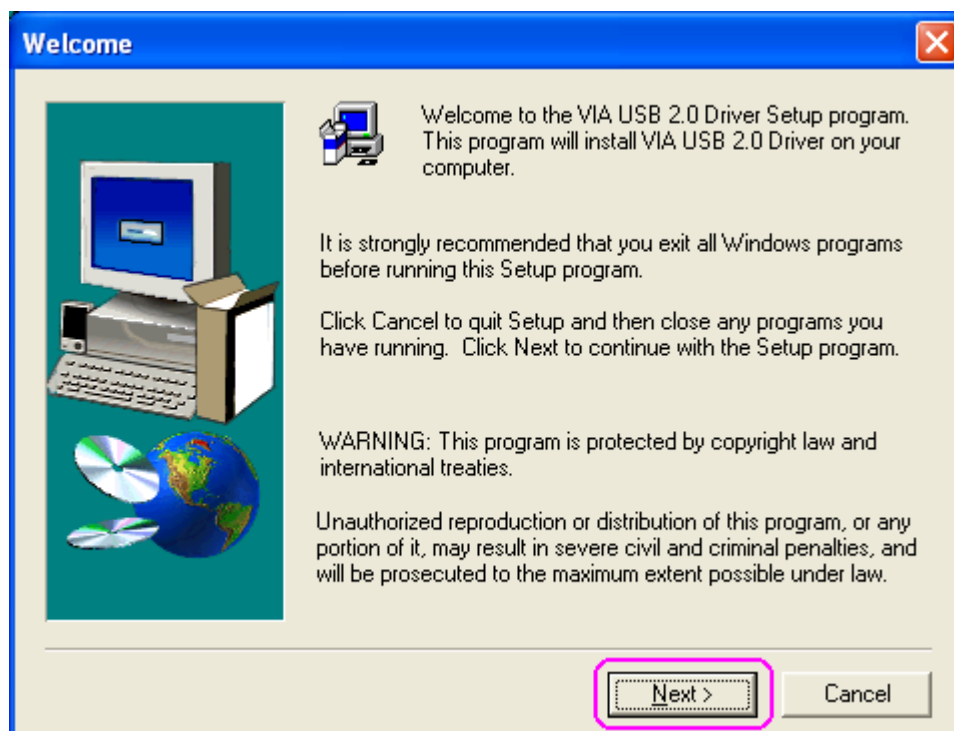


## ■ Uninstall Driver

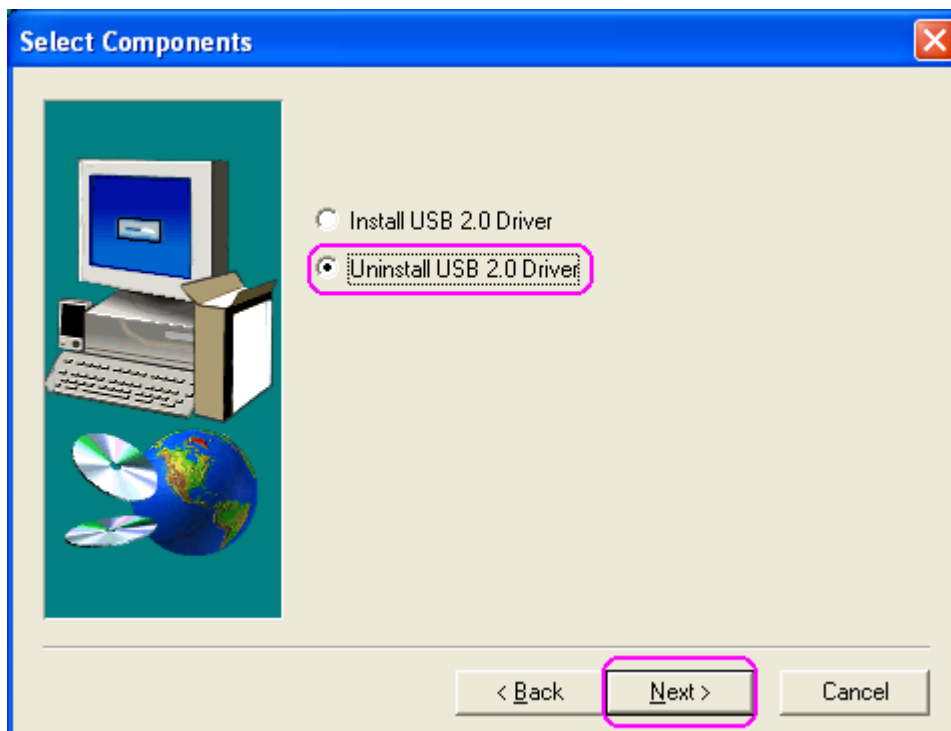
1. Insert the “**Setup program CD**” and execute the setup program by double clicking on the “**SETUP.exe**” file.



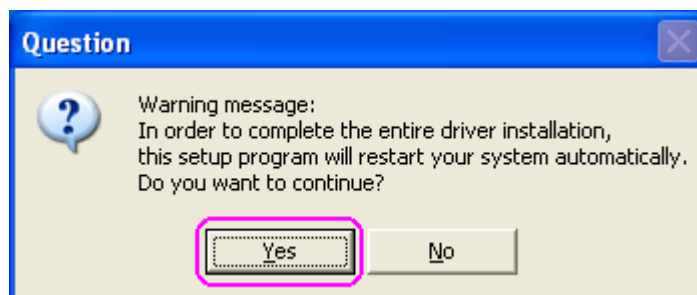
2. Press “**Next**” to continue.



3. Select “Uninstall USB 2.0 Driver” then press “Next”.



5. Press “Yes” to uninstall process, then system will restart when driver has been uninstalled completely.



**Note:** All the driver installation steps may be a little different from this guide when you using a new upgrade version O.S., in this situation please follow the Windows prompt step to complete the installation procedure.

## Free Manuals Download Website

<http://myh66.com>

<http://usermanuals.us>

<http://www.somanuals.com>

<http://www.4manuals.cc>

<http://www.manual-lib.com>

<http://www.404manual.com>

<http://www.luxmanual.com>

<http://aubethermostatmanual.com>

Golf course search by state

<http://golfingnear.com>

Email search by domain

<http://emailbydomain.com>

Auto manuals search

<http://auto.somanuals.com>

TV manuals search

<http://tv.somanuals.com>