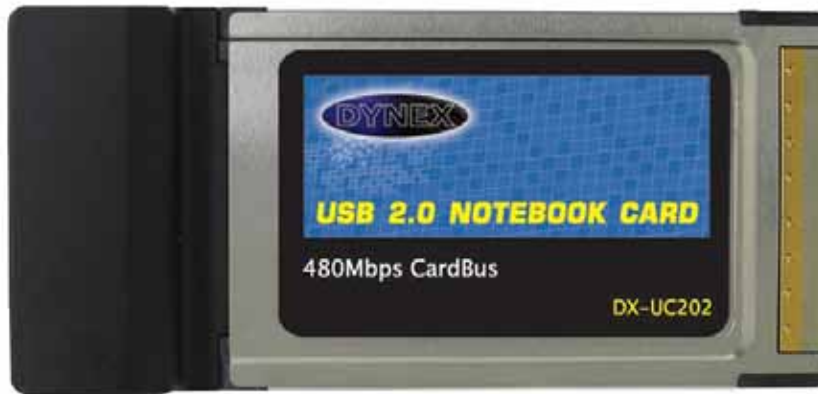


# USB2.0 Card Bus Adapter

With NEC Chipset

## Installation Guide



### ● Trademarks

All names and products mentioned below are registered trademarks of their respective companies.

### ● Introduction

Congratulations on purchasing your new USB2.0 hi-speed Card Bus adapter. The USB 2.0 Card Bus adapter supports a high-transmission rate of up to 480Mbps. It enables you to connect either the USB 1.1 devices or the latest USB2.0 high-speed peripherals on your notebook.

### ● System Requirements

- Notebook with one Card Bus slot.
- The accessory of setup program disc can be used either the following operating systems:
  - Windows98
  - Windows98 Second Edition.
  - Windows Millennium.
  - Windows 2000.
  - Windows XP.
  - Mac O.S. 10.1 X、 10.2 or later

### ● Package contents

- ✓ USB 2.0 Card Bus
- ✓ Setup program disc with manual
- ✓ USB power cable

- **Hardware installation**

1. Install USB2.0 EHCI driver. (Please refer to next driver installation)
2. Slide the card bus adapter into your notebook slot gently until it is firmly seated in the PC card slot. (Please refer to PC card installation guide in your Notebook user manual)



3. When the card bus adapter is inserted into the slot completely, Windows will detect the host controller automatically.
4. Connect the USB power cable that came with the package. Plug one end of the USB adapter cable into a USB port on your notebook. You can refer to the following figure for correct installation.



5. Plug the other end of the power cord into the power jack on card bus adapter. Then it will be ready to accept your USB device for application.



### External power adapter requirements:

The card bus adapter supports the following list of low-powered peripherals. If you need to connect a high-powered device such as USB floppy disk drive or high speed rpm of 2.5" HDD, your system might crash or will not detect the device by windows. This may cause the power cable to not provide an enough power current. For this situation we recommend you connect an external power supply to get more power current for the hi-powered device.

The external power adapter is an optional accessory (\*\*NOT INCLUDED, but available for separate purchase\*\*). Please see the following specification and order from your local dealer.

**Low-powered device:** Mouse, keyboard, Flash disk, USB Ethernet, Card reader, data linker or self-power device such as: Printer, USB audio speaker, scanner, digital camera...etc.

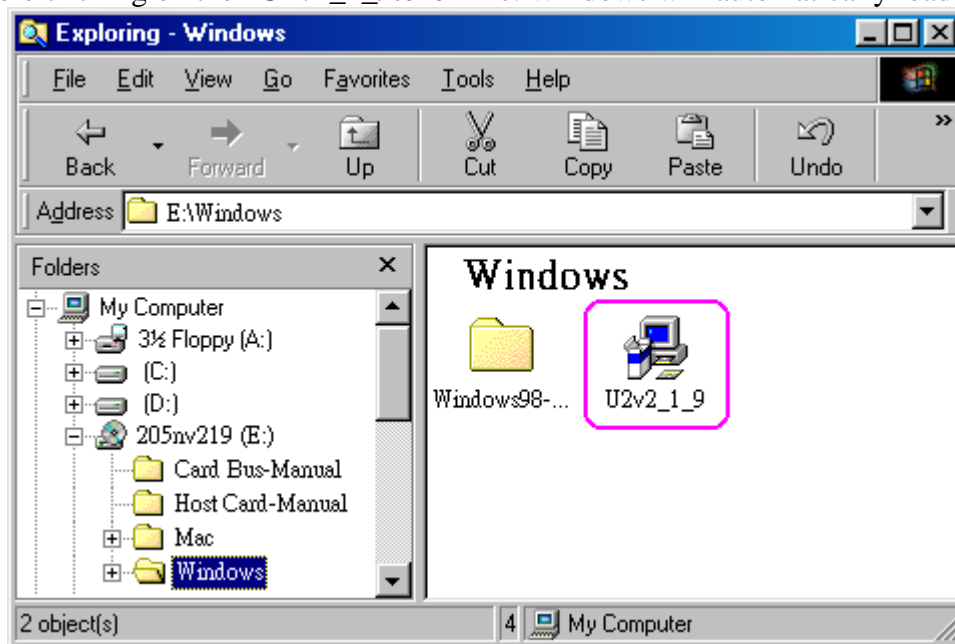
**High-powered device:** USB floppy disk drive, high capacity or high speed RPM of 2.5" storage enclosure, USB camera...etc.

- The external power supply specifications:
  1. Output: DC 5V /1 A (2-port), 5V /2 A (4-port)
  2. Power plug: 1.3Ø(inner)\* 3.5Ø (outer)\*9.6mm(length)

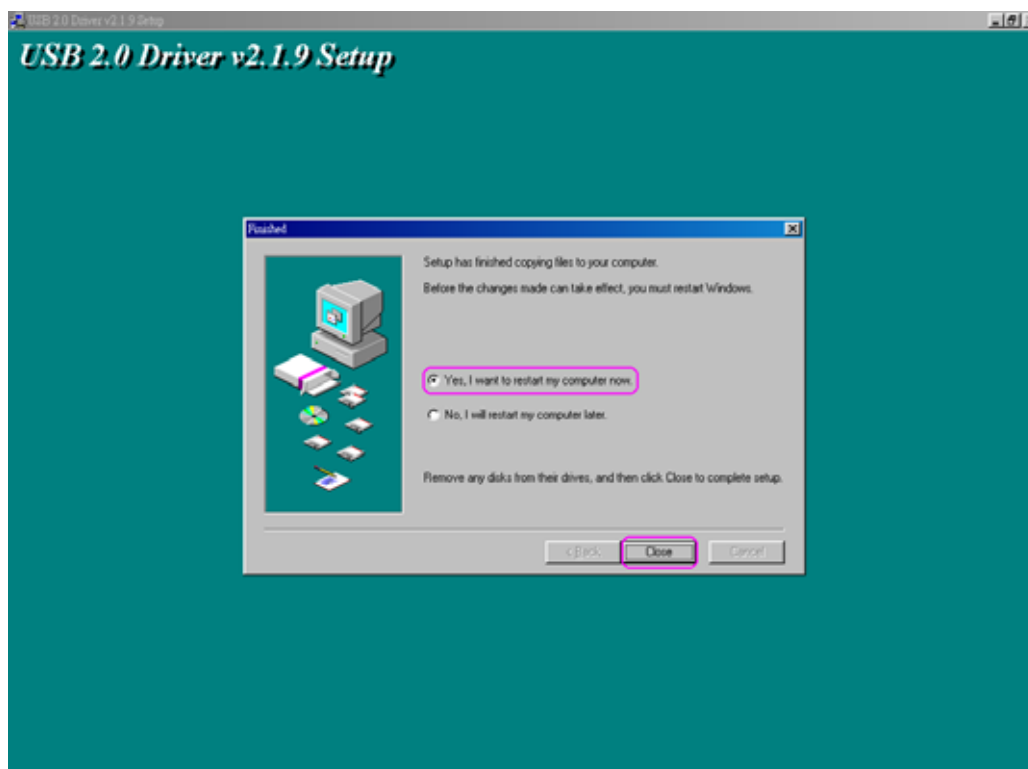


## Driver Installation:

1. Insert the supplied “**Setup program CD**” and execute the setup program in Windows folder by double clicking on the “**U2v2\_1\_9.exe**” file. Windows will automatically load related files.



2. When Windows has installed completely, choose “**Yes, I want to restart my computer now**”, then click “**Close**” to restart your computer.



## Check that your Card Bus adapter has properly installed

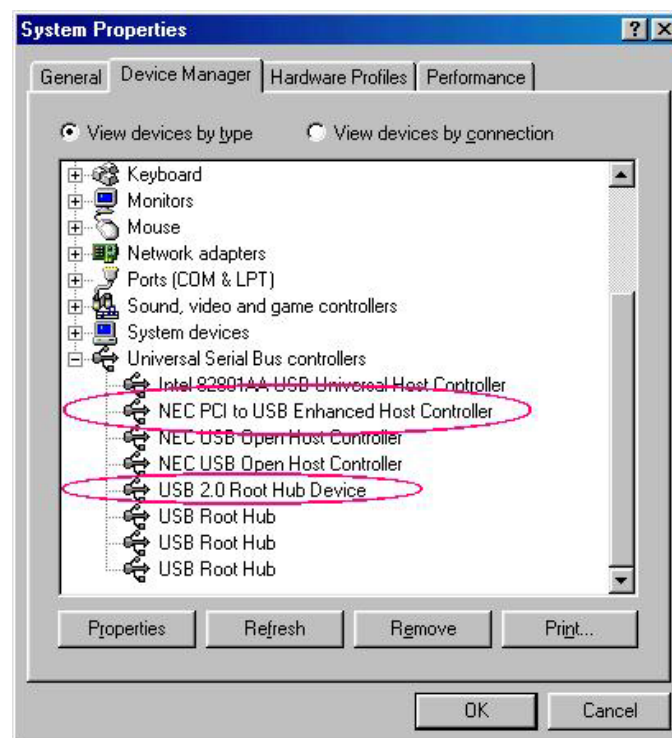
To confirm the USB 2.0 card bus adapter has been correctly installed, check your Device Manager on the Windows system after restart. You should see an entry titled “**Universal Serial Bus Controller**”. Clicking on the “+” sign for the next sub-entry should reveal the following added readings:

**NEC PCI to USB Enhanced Host Controller**  
**NEC PCI to USB Open Host Controller**  
**NEC PCI to USB Open Host Controller**  
**USB2.0 Root Hub Device**  
**USB Root Hub**  
**USB Root Hub**

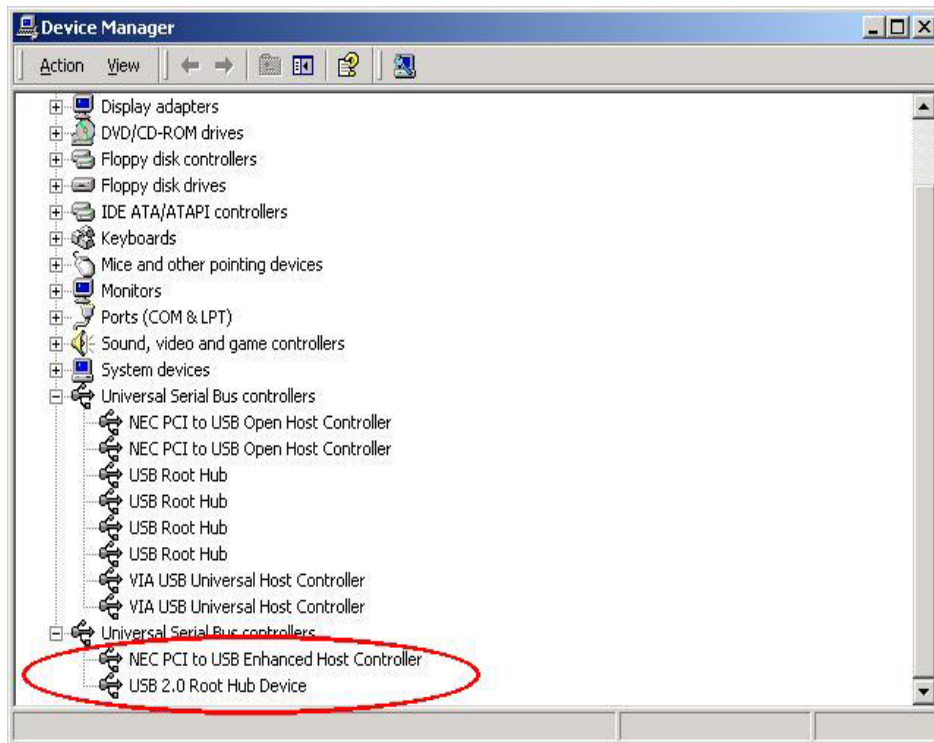
### Note:

Your “system properties list” may be a little different than above when you are using different Window systems. Please refer to following figures:

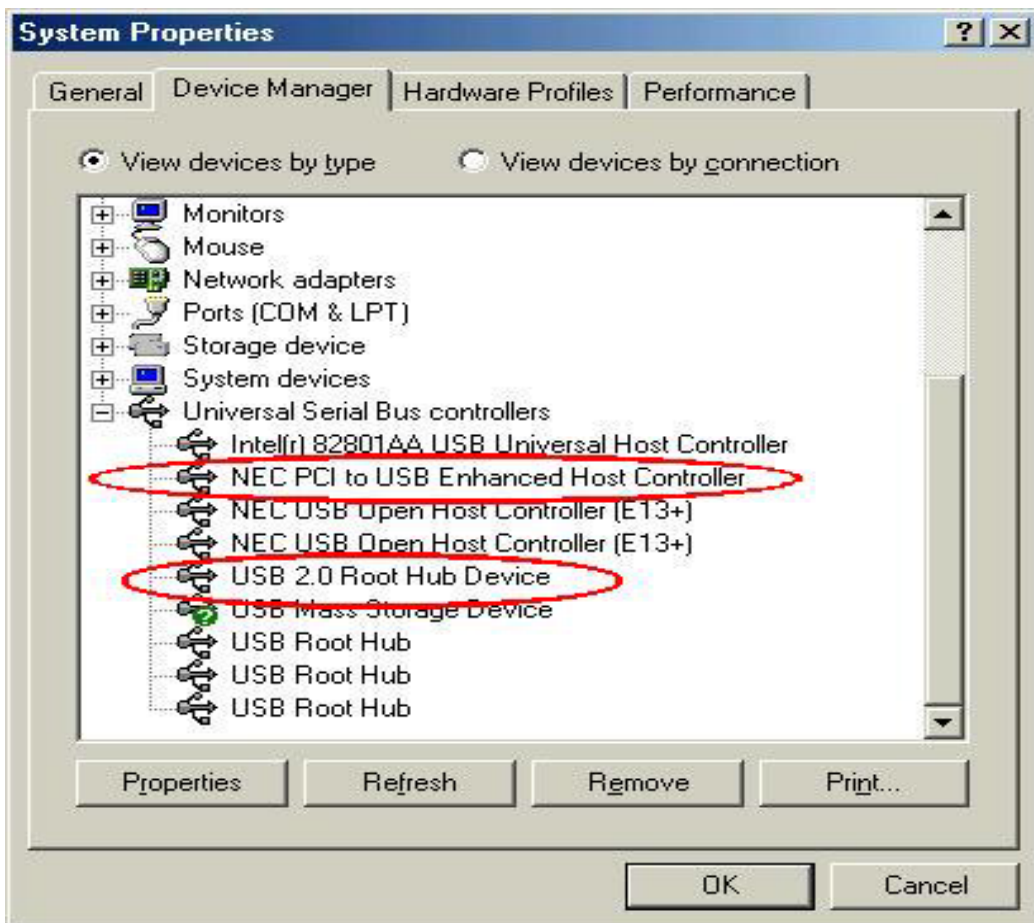
### List in Windows 98/SE system property:



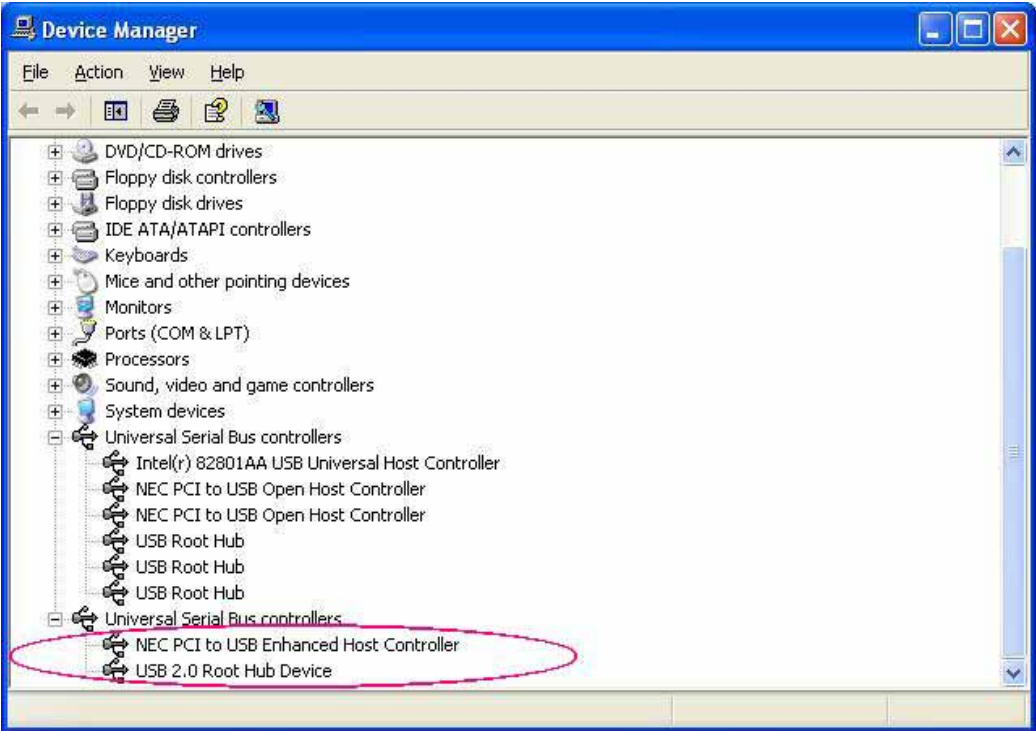
List in Windows 2000 system property:



List in Windows ME system property:



List in Windows XP system property:



----- End -----

## Free Manuals Download Website

<http://myh66.com>

<http://usermanuals.us>

<http://www.somanuals.com>

<http://www.4manuals.cc>

<http://www.manual-lib.com>

<http://www.404manual.com>

<http://www.luxmanual.com>

<http://aubethermostatmanual.com>

Golf course search by state

<http://golfingnear.com>

Email search by domain

<http://emailbydomain.com>

Auto manuals search

<http://auto.somanuals.com>

TV manuals search

<http://tv.somanuals.com>