



Dynex Wireless G Router (DX-WGRTR) & Wireless Enhanced G Router (DX-WGRTR) FAQ

March 2013

The Dynex Wireless G Router and Wireless Enhanced G Router have been discontinued. Windows® 7 and Windows® 8 operating systems have not been tested with these routers. The routers may function normally with these operating systems; however, that usage is not supported by customer support.

- Setup 2**
- Question 1: Where do I place my wireless router? 2
- Question 2: How do I connect my router to the modem? 2
- Question 3: How do I set up a wireless network? 2
- Question 4: What should I do if the Easy Install Wizard does not run? 3
- Question 5: What should I do if the Easy Install Wizard cannot find my wireless router? 3
- Question 6: What should I do if the Easy Install Wizard cannot connect my wireless router to the Internet? 3
- Question 7: What should I do if I completed the Easy Install Wizard, but can't connect to the Internet? 4
- Question 8: How do I manually configure my network settings? 5
- Question 9: How do I change my wireless network channel? 7
- Question 10: How do I change my wireless router's name?..... 7
- Question 11: How do I set up a wireless network without the Easy Install Wizard?..... 8
- Question 12: How do I connect to the wireless network? 8
- Question 13: How do I connect my cell phone, game system, or other WiFi device to the network? 9
- Question 14: What should I do if I can't connect to the Internet wirelessly? 9
- Usage..... 10**
- Question 15: What is my wireless router's range? 10
- Question 16: How do I extend the range of my wireless network?..... 10
- Question 17: What should I do if I forgot the password to my wireless network? 10
- Question 18: How do I access my wireless router's settings?..... 10
- Question 19: What should I do if I have a poor signal or the signal drops periodically? 10
- Question 20: How do I use my wireless router as an access point? 11
- Security 11**
- Question 21: How do I save my current configuration? 11
- Question 22: How do I restore a previous configuration? 12
- Question 23: How do I update my wireless router's firmware?..... 12
- Question 24: How do I reset my router? 13
- Question 25: How do I restore the factory settings?..... 13
- Question 26: Which encryption method should I use to secure my wireless network? 13
- Question 27: How do I secure my wireless network? 14
- General 15**
- Question 28: What are the system requirements to use the router? 15
- Question 29: Where can I get more information about the Dynex Wireless G Router? 15
- Question 30: Where can I find more information about my warranty? 15

Setup

Note: Use a wired connection to set up the wireless router even if the computer will later be used wirelessly.

Question 1: Where do I place my wireless router?

- Make sure that your wireless router's antenna(s) are positioned vertically (toward the ceiling). If your wireless router itself is positioned vertically, point the antenna(s) as much as possible in an upward direction. If your router has two antennas, make sure that they are parallel to each other.
- In multistory homes, place the wireless router as close to the center of the home as possible. This may mean placing the wireless router on an upper floor.
- Avoid placing the router under ground level, if possible. This may block the signal and limit coverage.
- Avoid placing your wireless router near objects that may cause interference such as microwaves, cordless telephones, dryers, or metal cabinets.

Question 2: How do I connect my router to the modem?

1. Unplug your modem's power cord. Put the router next to the modem and raise the router's antenna(s).
2. Locate the networking cable that connects your modem and computer. Unplug that cable from your modem, and plug it into any blue wired computer (Ethernet) port on the back of the router.
3. Connect the networking cable (included) from the green modem port on the back of the router to the free port on the modem.
4. Plug in the modem's power cord, then wait 60 seconds for the modem to start.
5. Connect the power cord from the power jack on the back of the wireless router to a wall outlet.
6. Wait 20 seconds for the router to start up, then make sure that the Modem LED and one of the Wired Computer LEDs on the front of the router are lit up in green. If they are not, recheck your connections.

Question 3: How do I set up a wireless network?

1. Connect your router to the modem. See [Question 2](#) for setup information.
2. Shut down any programs that are running on your computer.
3. Turn off any firewall or Internet connection-sharing software on your computer.
4. Connect a network cable from a blue wired computer (Ethernet) port on the back of your wireless router to a computer.
5. Insert the Installation CD into the computer that is directly connected to the router. The *Setup Assistant* automatically appears on your computer's screen within 15 seconds.
Note: If you are using Windows and the Setup Assistant does not start up automatically, see [Question 4](#) for more information.
6. Double-click the **Setup Assistant**, then follow the on-screen instructions.
7. After configuring the router, the Setup Assistant checks your connection to the Internet. This completes the router installation. You will see the Congratulations screen when your router can connect to the Internet.

Note: You can use the Setup Assistant to set up your other wired and wireless computers to connect to the Internet by clicking **Next**. If you decide to add computers to your router later, select **Exit the Assistant**, then click **Next**.

Question 4: What should I do if the Easy Install Wizard does not run?

Make sure that your computer meets the system requirements:

- A PC running Windows® 2000, Windows® XP, or Windows Vista®
OR
A Mac computer running Mac OSx 10.4x
- A minimum of 64 MB RAM
- A working Internet connection
- An Internet browser
- **Note:** The Dynex Wireless G Router and Wireless Enhanced G Router have been discontinued. Windows® 7 and Windows® 8 operating systems have not been tested with these routers. The routers may function normally with these operating systems; however, that usage is not supported by customer support.

If your computer meets the system requirements:

1. If the *Easy Install Wizard* does not appear within 15-20 seconds, select your disk drive from **My Computer**.
2. Double-click the file named **Setup Assistant**. The *Easy Install Wizard* should start within a few seconds.
3. If a window opens showing the files on the CD, double-click **EasyInstall.exe**.
4. If the *Easy Install Wizard* still does not start, see [Question 11](#) for an alternate setup method.

Question 5: What should I do if the Easy Install Wizard cannot find my wireless router?

- Make sure that your cables are correct and secure. See [Question 2](#) for connection information.
- Unplug the power cord from the wireless router for 10 seconds, then reconnect the power cord.
- Make sure that the wireless router's Power light is on and solid green. If not, make sure that the power cord is correctly connected to the wireless router and plugged into a wall outlet.
- Try shutting down and restarting your computer, then rerun the *Easy Install Wizard*.
- There may be third-party firewall software installed on the computer attempting to access the Internet. Examples of third-party firewall software are ZoneAlarm, BlackICE PC Protection, McAfee Personal Firewall, and Norton Personal Firewall. You can determine if the firewall software is preventing Internet access by temporarily turning it off. If Internet access works correctly while the firewall is disabled, change the firewall settings to function properly when it is turned on.
Note: See the instructions provided by the publisher of your firewall software for information on configuring the firewall to allow Internet access.
- If the *Easy Install Wizard* is still unable to find the router, see [Question 11](#) for an alternative setup method.

Question 6: What should I do if the Easy Install Wizard cannot connect my wireless router to the Internet?

- Use the troubleshooting suggestions within the *Easy Install Wizard*. If the troubleshooting screen does not open automatically, click the **Troubleshoot** button in the lower, right corner of the *Easy Install Wizard* window.
- If your ISP requires a user name and password, make sure that you have typed in your user name and password correctly. Some user names require that the ISP's domain be at the end of the name. For example: **myname@myisp.com**. The **@myisp.com** part of the user name may need to be typed as well as your user name.
- If you continue to have no Internet connection, see [Question 8](#) for information on manually configuring your network settings.

Question 7: What should I do if I completed the Easy Install Wizard, but can't connect to the Internet?

On the back of the wireless router, look at the wireless router's WAN light and Connected light.

If the WAN light is off and the Connected light is blinking:

- Make sure that the network cable between your wireless router and the modem is securely and correctly connected. The cable should connect from your wireless router's green modem port to the network port on the modem.
- Try unplugging the modem from its power source for three minutes, then plug the modem back into its power source. This may force the modem to recognize the wireless router.
- Try unplugging the wireless router from its power source for 10 seconds, then reconnect the power. This will cause the wireless router to reattempt communication with the modem.
- Try restarting your computer.

If the WAN light is on and the Connected light is blinking:

- If you have a *static IP address* connection, your Internet Service Provider (ISP) must assign you the IP address, subnet mask, and gateway address. Contact your ISP to get this information and see [Question 10](#) for an alternative setup method.
- You may need to configure your router to meet the specific requirements of your ISP. To search our Knowledge Base for ISP-specific issues, go to the Dynex website (<http://www.dynexsupport.com>), type "ISP" into the search bar, then press **ENTER**.

If the wireless router's WAN light is blinking and the Connected light is solid:

There may be third-party firewall software (for example, ZoneAlarm, McAfee Personal Firewall, or Norton Personal Firewall) installed on the computer that is unable to access the Internet.

- Turn off your computer's firewall. If the Internet works, change the firewall settings so that the Internet works when it is turned on. See the instructions provided by your firewall software for information about configuring the firewall to allow Internet access.

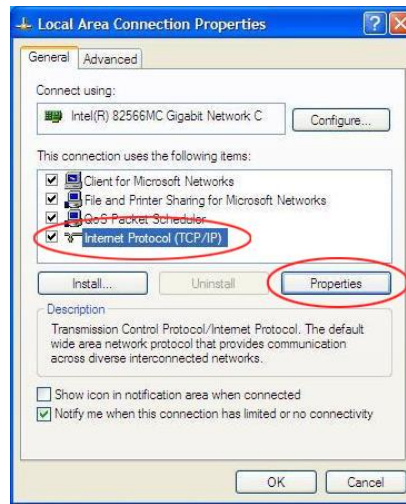
Question 8: How do I manually configure my network settings?

In order for your computer to properly communicate with your router, change your PC's TCP/IP settings to DHCP.

Note: The Dynex Wireless G Router and Wireless Enhanced G Router have been discontinued. Windows® 7 and Windows® 8 operating systems have not been tested with these routers. The routers may function normally with these operating systems; however, that usage is not supported by customer support.

To manually configure network settings in Windows Vista®, Windows® XP, or Windows® 2000:

1. Click **Start**, then open the **Control Panel**.
2. Double-click the **Network and dial-up connections** icon (Windows 2000) or the **Network** icon (Windows XP or Vista).
3. Right-click the **Local Area Connection** associated with your network adapter, then select **Properties** from the list. The *Local Area Connection Properties* window opens.
4. Select **Internet Protocol (TCP/IP)** from the list, then click **Properties**. *Internet Protocol Properties* window opens.



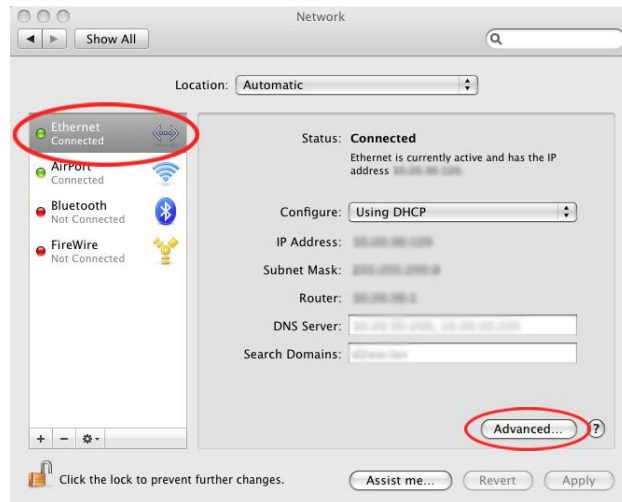
5. Select **Obtain an IP address automatically** and **Obtain DNS server address automatically**, then click **OK**. Your network adapter(s) are now configured for use with the router.
Note: If **Use the following IP address** is selected, set up your router for a static IP connection type. Write the address information down. You will need to enter this information into the router. See [Question 18](#) for information on accessing your wireless router's settings.

To manually configure network settings in Mac OS X:

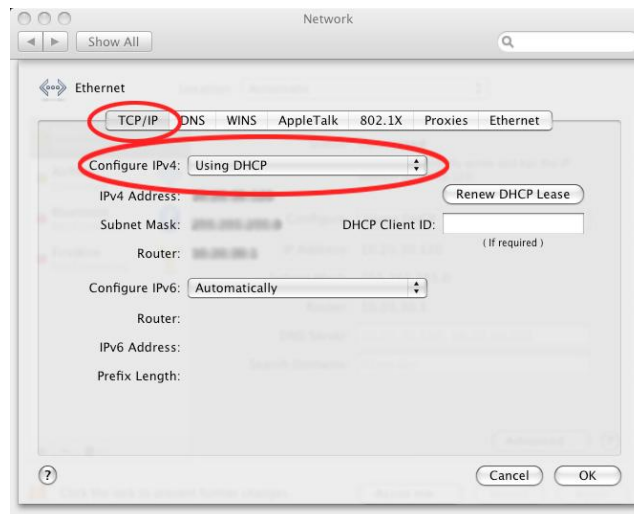
1. Click the **System Preferences** icon. The *System Preferences* menu opens.
2. Click **Network**. The *Network* window opens.
3. Select **Built-in Ethernet** from the *Show* drop-down menu, then click the **TCP/IP** tab. The *TCP/IP* tab opens.

OR

Select **Ethernet** from the left menu, then click **Advanced**. The *Advanced TCP/IP* menu opens.



4. Select **Using DHCP** from the *Configure* or *Configure IPv4* drop-down menu, then click **Apply** or **OK**. Your network adapter(s) are now configured for use with the router.



Notes:

- If **Manually** is selected in the *Configure* list, set up your wireless router for a static IP connection type. Write down the address information. You will need to enter this information into the router. See [Question 18](#) for information on accessing the router's User Interface.
- To connect using **PPPoE** you must configure your router for a PPPoE connection type in the *User Interface*. See [Question 18](#) for information on accessing the User Interface.

Question 9: How do I change my wireless network channel?

The default channel is 11 (unless you are in a country that does not allow channel 11). If there are other wireless networks operating in your area (including cordless telephones), set your network to operate on a channel that is different than the other wireless networks. For best performance, use a channel that is at least five channels away from the other wireless networks.

1. Connect your computer to a wired Internet connection.
2. Open your internet browser and enter “**192.168.2.1**” into the address bar, then press **Enter**. The router’s home page opens in your browser window.
Note: Do not enter “http://” or “www”
3. Click **Channel and SSID** under the “Wireless” heading on the left menu. The *Channel and SSID* page opens.
4. Select the channel number from the *Wireless Channel* list, then click **Apply Changes**. The wireless network channel changes.

Question 10: How do I change my wireless router’s name?

Notes:

- If you change your wireless router’s name, your wireless-equipped computers may also need to be reconfigured to connect to your new network name.
- For security, you can choose not to broadcast your network’s name (SSID). This will keep your network name hidden from computers that are scanning for the presence of wireless networks. To turn off the broadcast of the SSID, remove the check mark from the box next to **Broadcast SSID**, then click **Apply Changes**. While this can be a good security option, it can make adding devices difficult in the future.

To change your wireless router name:

1. Connect your computer to a wired Internet connection.
2. Open your Internet browser.
3. Type “**192.168.2.1**” (or the IP address you customized) in the address line, then press **ENTER** to access the wireless router’s Web-Based Advanced User Interface.
Note: If you have difficulty accessing the wireless router’s Web-Based Advanced User Interface, check your computer’s network settings. See [Question 8](#) for more information.
4. Click **Channel and SSID** under the “Wireless” heading on the left menu.
5. Enter your password if you are asked to log in, then click **Submit**.
Note: If you have not set a custom password, leave this field blank.
6. Type the router name you want to use in the SSID field, then click **Apply Changes**. The router name changes.

Question 11: How do I set up a wireless network without the Easy Install Wizard?

You can set up a wireless network by accessing the Web-Based Advanced User Interface.

To access the Web-Based Advanced User Interface:

1. Connect your wireless router to your modem. See [Question 2](#) for connection instructions.
2. Set up your computer's network settings. See [Question 8](#) for instructions.
3. Open your Internet browser.
4. Type "**192.168.2.1**" into the address line, then press **ENTER** to access the wireless router's Web-Based Advanced User Interface. The wireless router's home page opens.
Note: If you have difficulty accessing the wireless router's Web-Based Advanced User Interface, check your computer's network settings. See [Question 8](#) for more information.
5. Click **Login**, or click on any one of the links on the home page to go to the login screen.
6. Enter your password or leave the password blank (the wireless router ships with no password), then click **Submit**.
Note: Only one computer can log into the router at a time to make changes to the wireless router settings.
7. When you have finished changing the settings, the **Internet Status** indicator in the top right corner will read **connection OK** if your wireless router is set up correctly.
8. When you are finished, click **Logout** to exit of the Web-Based Advanced User Interface.
OR
The computer automatically logs out after a specified period of time. The default time is 10 minutes. This can be changed from 1 to 99 minutes.

To connect your router to your Internet Service Provider (ISP):

1. Click **Connection Type** under the "Internet LAN" heading on the left menu. The *Connection Type* page opens.
2. Click the button next to your connection type, then click **Next**.
3. If your ISP gave you DNS settings, click **DNS** under the "Internet LAN" heading on the left menu. You can enter DNS address entries for ISPs that require specific settings through this link. If your ISP did not provide a specific DNS address, check the **Automatic from ISP** box.
4. If your ISP requires a specific MAC address to connect to the Internet, click **MAC address** under the "Internet LAN" heading on the left menu. You can enter a specific MAC address or clone the current computer's MAC address through this link.
5. When you have finished changing the settings, the **Internet Status** indicator in the top right corner reads **connection OK** if your router is set up correctly.

Question 12: How do I connect to the wireless network?

To connect with a Windows OS:

1. Right-click the wireless icon in the taskbar next to the clock, then select **Open Network Connections**.
2. Right-click the Wireless Network Connection, then select **View Available Wireless Connections**.
3. In the list of available networks, double-click the network you want to connect to.
4. If prompted, enter a network key. This is the Passkey or PSK that was created when setting up security.

To connect with a Mac OS:

1. Click on **System Preferences** from the Apple menu.
2. Double-click the **Network** logo from the *System Preferences* window.
3. Select **AirPort**, then click the *Network Name* drop-down menu to select the wireless network you want to connect to.
4. If prompted, enter the network password. This is the passkey or PSK that was created when setting up security. If you want to connect to the network automatically the next time the network is in range, select **Remember this network**.
5. Click **Apply** to connect to the network.

Question 13: How do I connect my cell phone, game system, or other WiFi device to the network?

Note: See the instructions that came with your WiFi device for more information about connecting to the Internet.

1. Open the wireless settings of the device that you want to connect to the Internet.
2. Select your wireless network name (SSID) from the list.
3. If prompted, enter the network password. This is the passkey or PSK that was created when setting up security.

Question 14: What should I do if I can't connect to the Internet wirelessly?

1. Look at the lights on your wireless router. They should be as follows:
 - The Power light should be on.
 - The Connected light should be solid.
 - The WAN light should be on and either solid or blinking.

If the lights are not correct check your connections. See [Question 2](#) for more information.

2. If you have a Windows OS:
 - Click on the wireless utility icon in the taskbar in the bottom right corner of the screen, then locate the list of Available Networks and see if your network is listed.

OR

If you have a Mac OS:

- Click on **System Preferences** from the Apple menu, double-click the **Network** logo from the *System Preferences* window, then select **AirPort**. Click the *Network Name* drop-down menu to see if your network is listed.

If your network name is listed:

1. Click on the correct network name in the **Available Networks** list.
2. If the network has security (encryption) enabled, enter the network key.
Note: If you have forgotten your network key, you will need to restore your wireless router's factory settings. See [Question 25](#) for more information.
3. Within a few seconds, your computer should connect to the network.

If your network name is not listed:

- Temporarily move your computer, if possible, 5 to 10 feet away from the router. Close the wireless configuration utility, then reopen it. If the correct network name now appears under **Available Networks**, you may have a range or interference problem. See [Question 1](#) for wireless router placement information.
- Using a computer that is connected to the router through a network cable (as opposed to wirelessly), make sure that **Broadcast SSID** is enabled. This setting is found on the router's wireless *Channel and SSID* configuration page. See [Question 18](#) for information on accessing the wireless router's settings.

Usage

Question 15: What is my wireless router's range?

- The typical indoor range is 100 – 200 feet (30.5 – 61 meters).
- The range may decrease if the signal has to pass through walls or other obstructions.
- Devices such as microwaves, refrigerators, metal cabinets, and cordless telephones may cause interference and reduce the wireless range.
- Connection speed may decrease the farther you move away from the router.

Question 16: How do I extend the range of my wireless network?

- Use a wireless access point (not included) in the area that is not covered by your wireless router. See the manual that came with the wireless access point for setup information.
- Your wireless router can be configured as an access point. See [Question 20](#) for more information.

Question 17: What should I do if I forgot the password to my wireless network?

- You will need to reset your wireless router back to factory settings. See [Question 25](#) for more information.

Question 18: How do I access my wireless router's settings?

You can change the settings on your wireless router through the Web-Based Advanced User Interface.

To access the user interface:

1. Open your Internet browser.
2. Type "**192.168.2.1**" into the address line, then press **ENTER** to access the wireless router's Web-Based Advanced User Interface. The wireless router's home page opens.
Note: If you have difficulty accessing the wireless router's Web-Based Advanced User Interface, check your computer's network settings. See [Question 8](#) for more information.
3. Click **Login**, or click on any one of the links on the home page to go to the login screen.
4. Enter your password or leave the password blank (the wireless router ships with no password), then click **Submit**.
5. When you have finished changing the settings, the **Internet Status** indicator in the top right corner reads **connection OK** if your wireless router is set up correctly.
6. When you are finished, click **Logout** to exit of the Web-Based Advanced User Interface.

OR

The computer automatically logs out after a specified period of time. The default time is 10 minutes. This can be changed from 1 to 99 minutes.

Question 19: What should I do if I have a poor signal or the signal drops periodically?

- Try moving your computer 5 – 10 feet (1.5 – 3 meters) from the wireless router. If the problem stops, the problem is with the range. See [Question 1](#) for information about router placement.
- Make sure that your wireless router is close as possible to the center of your wireless network devices.
- Make sure that your wireless router's antenna(s) are positioned vertically. If your router has two antennas, make sure that they are parallel to each other.
- Make sure that your wireless router is not placed near any other devices that may cause interference such as microwaves, cordless telephones, dryers, or metal cabinets.
- You may need to update your firmware. For more information, see [Question 23](#).
- Try changing the channel of your wireless network. See [Question 9](#) for more information.
- Consider purchasing an access point (not included) to extend the coverage of your wireless network.

Question 20: How do I use my wireless router as an access point?

An access point is used to extend the coverage of your wireless network.

To use the access point mode:

1. Open your Internet browser.
2. Type “**192.168.2.1**” into the address line, then press **ENTER** to access the wireless router’s Web-Based Advanced User Interface. The wireless router’s home page opens.
Note: If you have difficulty accessing the wireless router’s Web-Based Advanced User Interface, check your computer’s network settings. See [Question 8](#) for more information.
3. Click **Use as access point** under the “Wireless” heading on the left menu. The *log in* page opens.
4. Enter your password or leave the password blank (the wireless router ships with no password), then click **Submit**. The *Use as Access Point* page opens.
5. Select **Enable**. When you select this option, you are able to change the IP settings.
6. Set your IP settings to match your network, then click **Apply Changes**.
7. Connect a cable from the Modem port on the router to your existing network. The router is now acting as an access point.
Note: To access the router's Web-Based Advanced User Interface again, type the IP address you specified into your browser's navigation bar. You can set the encryption settings, MAC address filtering, SSID, and channel normally.

Security

Question 21: How do I save my current configuration?

Saving your configuration allows you to restore it later if your settings are lost or changed. We recommend that you back up your current configuration before performing a firmware update.

To save a current configuration:

1. Open your Internet browser.
2. Type “**192.168.2.1**” into the address line, then press **ENTER** to access the wireless router’s *Web-Based Advanced User Interface*. The wireless router’s home page opens.
Note: If you have difficulty accessing the wireless router’s Web-Based Advanced User Interface, check your computer’s network settings. See [Question 8](#) for more information.
3. Click **Save/Backup Settings** under the “Utilities” heading on the left menu. The *log in* page opens.
4. Enter your password or leave the password blank (the wireless router ships with no password), then click **Submit**. The *Save/Backup Settings* page opens.
5. Click **Save**. The *File Download* window opens.
6. Click **Save**. The *Save* window opens.
7. Select a location and name the file, then click **Save**. The *Download Complete* window opens.
Note: You can name the file anything you want, or use the default name “Config.” However, makes sure that you can locate the file later.
8. Click **Close**. Your current configuration is now saved.

Question 22: How do I restore a previous configuration?

Note: If you did not save a configuration previously, you are only able to restore factory settings. See [Question 23](#) for information on restoring the factory settings.

1. Open your Internet browser.
2. Type "**192.168.2.1**" into the address line, then press **ENTER** to access the wireless router's *Web-Based Advanced User Interface*. The wireless router's home page opens.
Note: If you have difficulty accessing the wireless router's Web-Based Advanced User Interface, check your computer's network settings. See [Question 8](#) for more information.
3. Click **Restore Previous Settings** under the "Utilities" heading on the left menu. The *log in* page opens.
4. Enter your password or leave the password blank (the wireless router ships with no password), then click **Submit**. The *Restore Previous Settings* page opens..
5. Click **Browse**. The *Open* window appears.
6. Locate the configuration file you want to restore, then double-click on it. A message appears asking for confirmation that you want to restore a previous configuration.
Note: All configuration files end with a ".bin".
7. Click **OK**. A reminder window appears. It takes up to 35 seconds for the configuration restoration to complete.
8. Click **OK**. A 35-second countdown appears on the screen. When the countdown reaches zero, the router's configuration is restored. The router's home page should appear automatically. If not, type in the Router's address (default = **192.168.2.1**) into the navigation bar of your browser to return to the *User Interface*.

Question 23: How do I update my wireless router's firmware?

Firmware updates contain feature improvements and fixes to problems that may exist. When Dynex releases new firmware, you can download it from the Dynex web site and update your router's firmware to the latest version.

To download and update a new firmware version:

1. Open your Internet browser.
2. Type "**192.168.2.1**" into the address line, then press **ENTER** to access the wireless router's *Web-Based Advanced User Interface*. The wireless router's home page opens.
Note: If you have difficulty accessing the wireless router's Web-Based Advanced User Interface, check your computer's network settings. See [Question 8](#) for more information.
3. Click **Firmware Update** under the "Utilities" heading on the left menu. The *Login* page opens.
4. Enter your password or leave the password blank (the wireless router ships with no password), then click **Submit**. The *Firmware Update* page opens.
Note: Only one computer can log into the router at a time to make changes to the wireless router settings.
5. Click **Check Firmware**. The utility checks to see if there is an updated version of the firmware available. If a new version of the firmware is available, a window opens that lets you save the firmware file.
6. Select a name and location to save the firmware file, then click **Save**. Make sure that you save the file in a place where you can locate it later. The *Download Complete* window opens.
7. Click **Close**.
8. Click **Browse** on the *Firmware Update* page. The *Open* window opens.
9. Browse to the firmware file you downloaded, then select the file by double-clicking on the file name. The *Update Firmware* box displays the location and name of the firmware file you just selected.
10. Click **Update**. A message asks if you want to continue.
11. Click **OK**. A message tells you that the router may not respond for as long as one minute as the firmware is loaded into the router and the router is rebooted.
12. Click **OK**. A 60-second countdown appears on the screen. When the countdown reaches zero, the router's firmware update is complete. The router's home page should appear automatically. If not, type in the wireless router's address (default = **192.168.2.1**) into the navigation bar of your browser to return to the *User Interface*. The firmware update is complete.

Question 24: How do I reset my router?

Resetting the router restores normal operation and keeps the programmed settings. To delete programmed settings and restore factory settings, see [Question 25](#).

- Press and release the **Reset** button on the back of the router. The lights on the router momentarily flash. The **Power/Ready** light will begin to blink. When the **Power/Ready** light becomes solid again, the reset is complete.

Question 25: How do I restore the factory settings?

Restore factory settings when the router is functioning improperly. Restoring the factory settings removes all programmed settings. To reset the wireless router without losing programmed settings, see [Question 24](#).

- Press and hold the **Reset** button the back of the router for at least 10 seconds, then release it. The lights on the router momentarily flash. The **Power/Ready** light will begin to blink. When the **Power/Ready** light becomes solid again, the restore is complete.
- See [Question 3](#) for information on setting up a wireless network.

Question 26: Which encryption method should I use to secure my wireless network?

- We recommend using WPA if your wireless card supports it.
 - WEP adds security to all Wi-Fi compliant wireless products. It gives wireless networks the equivalent level of privacy protection as a comparable wired network.
 - WPA-PSK (no server) uses a pre-shared network key that is 8-63 characters long. Each client uses the same network key to access the network. It is typically the mode used in home environments.
 - WPA (with radius server) is a system where a radius server distributes the network key to the clients automatically. It is typically the mode found in business environments.
 - WPA2 requires Advanced Encryption Standard (AES) for encryption of data. It offers greater security than WPA.

Question 27: How do I secure my wireless network?

Make sure that you have completed the basic setup of your router before setting up security and all of your computers (wired and wireless) can connect to the Internet through the router.

To set up WPA/WPA2:

1. Click **Security** under the “Wireless” heading on the left menu. The *Security* page opens.
2. Open a web browser on a computer that has a wired (cable) connection to the wireless router. In the address field, type “**192.168.2.1**” (or the IP address you customized), then click **ENTER**.
3. Select **WPA/WPA2-Personal (PSK)** from the **Security Mode** list.
4. Select **WPA-PSK** for just WPA authentication or **WPA2-PSK** for just WPA2 authentication, or you may select **WPA-PSK + WPA2-PSK** for WPA and WPA2 as the authentication type.
5. Enter your pre-shared key. This can be from 8 to 63 characters and can be letters, numbers, or symbols. This same key must be used on all of the computers that you set up. This pre-shared key allows users full access to your network including shared files and printers.
6. Click **Apply Changes** to finish. You must now set all computers to match these settings depending on the type of access you want them to have.

Notes:

- If your wireless card is not equipped with WPA-enabled software, a file from Microsoft (**Windows XP Support Patch for Wireless Protected Access**) is available for free download. This file only works with Windows XP.
- Make sure that the wireless card manufacturer supports WPA and that you have downloaded and installed the latest driver from their support site.

To set up 64-Bit WEP encryption:

1. On a computer that has a wired (cable) connection to the Router, open up a web browser. In the address field, type “**192.168.2.1**” (or the IP address you customized), then click **ENTER**.
2. Click **Security** under the “Wireless” heading on the left menu. The *Security* page opens.
3. Select **64-bit WEP** from the **Security Mode** list.
4. Enter your key by typing in the hex key manually, or you can put a check mark in **Passphrase**, then type in your passphrase.
5. Click **Generate** to generate four different hex keys.
A hex (hexadecimal) key is a combination of numbers and letters from A-F and 0-9. For 64-bit WEP, you need to enter 10 hex keys.
For example: AF 0F 4B C3 D4 = 64-bit WEP key
6. Click **Apply Changes** to save the setting.
Caution: If you are configuring the wireless router or access point from a computer with a wireless client, you need to make sure that security is turned ON for this wireless client. If this is not done, your client will lose its wireless connection.

To set up 128-Bit WEP encryption:

1. On a computer that has a wired (cable) connection to the Router, open up a web browser. In the address field, type “**192.168.2.1**” (or the IP address you customized), then click **Enter**.
2. Click **Security** under the “Wireless” heading on the left menu. The *Security* page opens.
3. Select **128-bit WEP** from the **Security Mode** list.
4. Enter your key by typing in the hex key manually, or you can put a check mark in **Passphrase**, then type in your passphrase.
5. Click **Generate** to generate four different hex keys.
A hex (hexadecimal) key is a combination of numbers and letters from A-F and 0-9. For 128-bit WEP, you need to enter 26 hex keys.
For example: C3 03 0F AF 0F 4B B2 C3 D4 4B C3 D4 E7 = 128-bit WEP key
6. Click **Apply Changes** to save the setting.
Caution: If you are configuring the wireless router or access point from a computer with a wireless client, you need to make sure that security is turned ON for this wireless client. If this is not done, your client will lose its wireless connection.

Note to Mac users: Original Apple® AirPort® products support 64-bit encryption only. Apple AirPort 2 products support 64-bit or 128-bit encryption. Check your product to see which version you are using. If you cannot configure your network with 128-bit encryption, try 64-bit encryption.

General

Question 28: What are the system requirements to use the router?

- Broadband Internet connection such as a cable or DSL modem with Ethernet (RJ45) connection
- At least one computer with an installed network interface adapter
- TCP/IP networking protocol installed on each computer
- Ethernet (RJ45) networking cable
- Internet browser

Question 29: Where can I get more information about the Dynex Wireless G Router?

Refer to your *User Guide* on the Dynex website (www.dynexproducts.com).

- If you have the Wireless G Router (DX-WGRTR) model:
 - To go to the product page, type “**DX-WGRTR**” into the search bar, then press **ENTER**. Or, go to <http://www.dynexproducts.com/products/computer-accessories/DX-WGRTR.html>
- If you have the Wireless Enhanced G Router (DX-WEGRTR) model:
 - To go to the product page, type “**DX-WEGRTR**” into the search bar, then press **ENTER**. Or, go to <http://www.dynexproducts.com/products/computer-accessories/DX-WEGRTR.html>

Question 30: Where can I find more information about my warranty?

You can find more information about your warranty in your *User Guide* or on the Dynex website (www.dynexproducts.com).

- If you have the Wireless G Router (DX-WGRTR) model:
 - To go to the product page, type “**DX-WGRTR**” into the search bar, then press **ENTER**. Or, go to <http://www.dynexproducts.com/products/computer-accessories/DX-WGRTR.html>
- If you have the Wireless Enhanced G Router (DX-WEGRTR) model:
 - To go to the product page, type “**DX-WEGRTR**” into the search bar, then press **ENTER**. Or, go to <http://www.dynexproducts.com/products/computer-accessories/DX-WEGRTR.html>

Free Manuals Download Website

<http://myh66.com>

<http://usermanuals.us>

<http://www.somanuals.com>

<http://www.4manuals.cc>

<http://www.manual-lib.com>

<http://www.404manual.com>

<http://www.luxmanual.com>

<http://aubethermostatmanual.com>

Golf course search by state

<http://golfingnear.com>

Email search by domain

<http://emailbydomain.com>

Auto manuals search

<http://auto.somanuals.com>

TV manuals search

<http://tv.somanuals.com>