

Wireless-G PCI Adapter



Use This Guide to Install:

CWP-800

Table of Contents

Chapter 1: Introduction

The Wireless-G PCI Adapter

Features

Chapter 2: Planning Your Wireless Network

Network Topology

Ad-Hoc versus Infrastructure Mode

Chapter 3: Getting to Know Your CNet Smart Wireless-G PCI Adapter

Chapter 4: Installing Driver, Configuration Utility and Hardware for Windows 98SE/ME/2000/XP

Driver Installation for Windows 98SE/ME/2000/XP

Inserting the Adapter

Chapter 5: Using the WLAN Monitor for Windows 98SE/ME/2000/XP

Overview

Accessing the WLAN Monitor

Link Information

Available Network

Profiles

About

Creating a New Profile

Appendix A: Troubleshooting

Appendix B: Application & Specifications

Application

Specifications

Chapter 1: Introduction

The Wireless-G PCI Adapter

The CNet Smart Wireless-G PCI Adapter installs in most desktop and lets you put your computer almost anywhere in the building, without the cost and hassle of running network cables. Now you don't have to drill holes in your walls and climb through the attic or cellar to get connected to the network. Once you're connected, you can keep in touch with your e-mail, access the Internet, use instant messaging to chat with friends, and share files and other resources such as printers and network storage with other computers on the network.

The CNet Smart Wireless-G PCI Adapter connects you with Wireless-G networks at an incredible 54Mbps! And for added versatility, it can also interoperate with all the 11Mbps Wireless-B (802.11b) products found in homes, businesses, and public wireless hotspots around the country. And in either mode, your wireless communications are protected by up to 128-bit encryption, so your data stays secure.

So don't hassle with running cables through your house - get your desktop connected the easy way with the CNet Smart Wireless-G PCI Adapter.

Features

- Investment Protection: 5 Times Faster and Interoperate with Existing Wireless-B Equipment
Seamlessly
- 40/64/128 bit WEP and Advanced 256-bit WPA (Wi-Fi Protected Access) Encryption Provides
maximum wireless security
- Simple Installation with the Setup Wizard
- Compatible with Windows 98SE/ME/2000/XP.

Chapter 2: Planning Your Wireless Network

Network Topology

A wireless local area network (WLAN) is exactly like a regular local area network (LAN), except that each computer in the WLAN uses a wireless device to connect to the network. Computers in a WLAN share the same frequency channel and SSID, which is an identification name for wireless devices.

Ad-Hoc versus Infrastructure Mode

An Ad-Hoc wireless LAN is a group of computers, each equipped with one WLAN adapter, connected as an independent wireless LAN. Computers in a specific Ad-Hoc wireless LAN must be configured to share the same radio channel.



The adapter provides access to a wired LAN for wireless workstations. An integrated wireless and wired LAN is called an infrastructure configuration. A group of adapter PC users and an Access Point compose a Basic Service Set (BSS). Each adapter PC in a BSS can talk to any computer in the wired LAN infrastructure via the Access Point.



Chapter 3: Getting to Know the CNet Smart Wireless-G PCI Adapter

CNet Smart Wireless-G PCI Adapter will install into your PC like any PCI adapter and on the mounting bracket, you will find two distinguishing items:



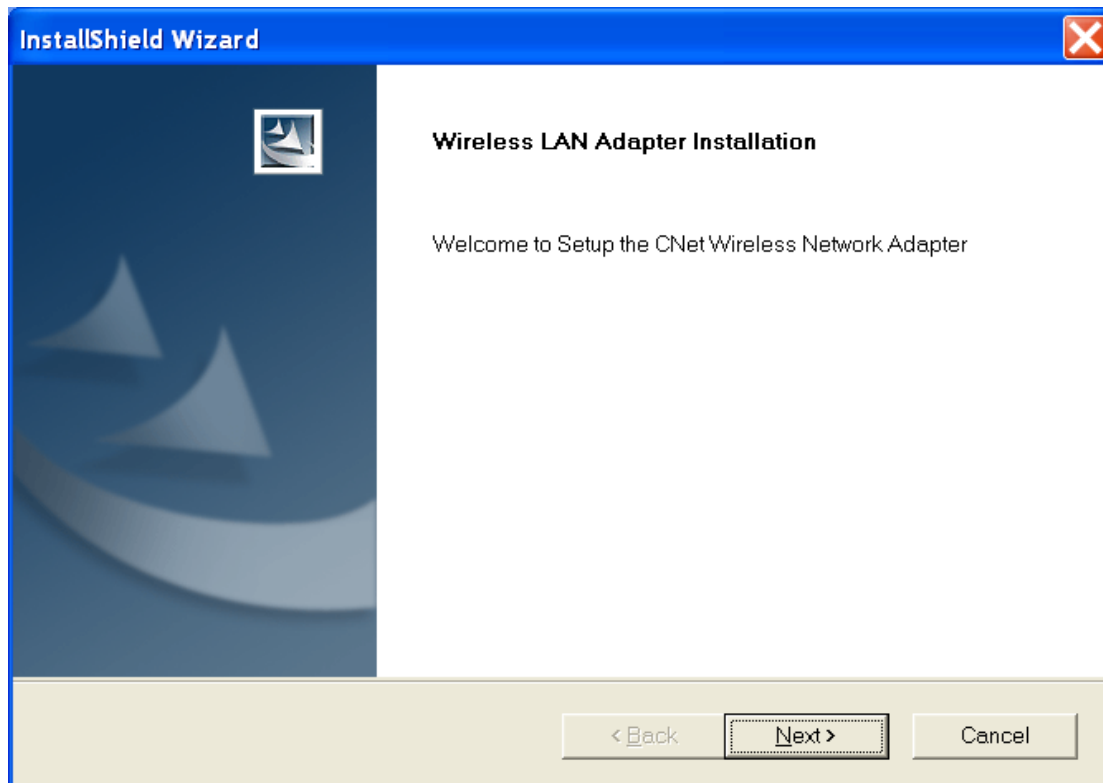
ACT LED Green. The ACT LED will light up when the Adapter is powered on.

Antenna Port Attach the PCI Adapter's antenna here and position it for maximum performance, which is usually in a vertical position.

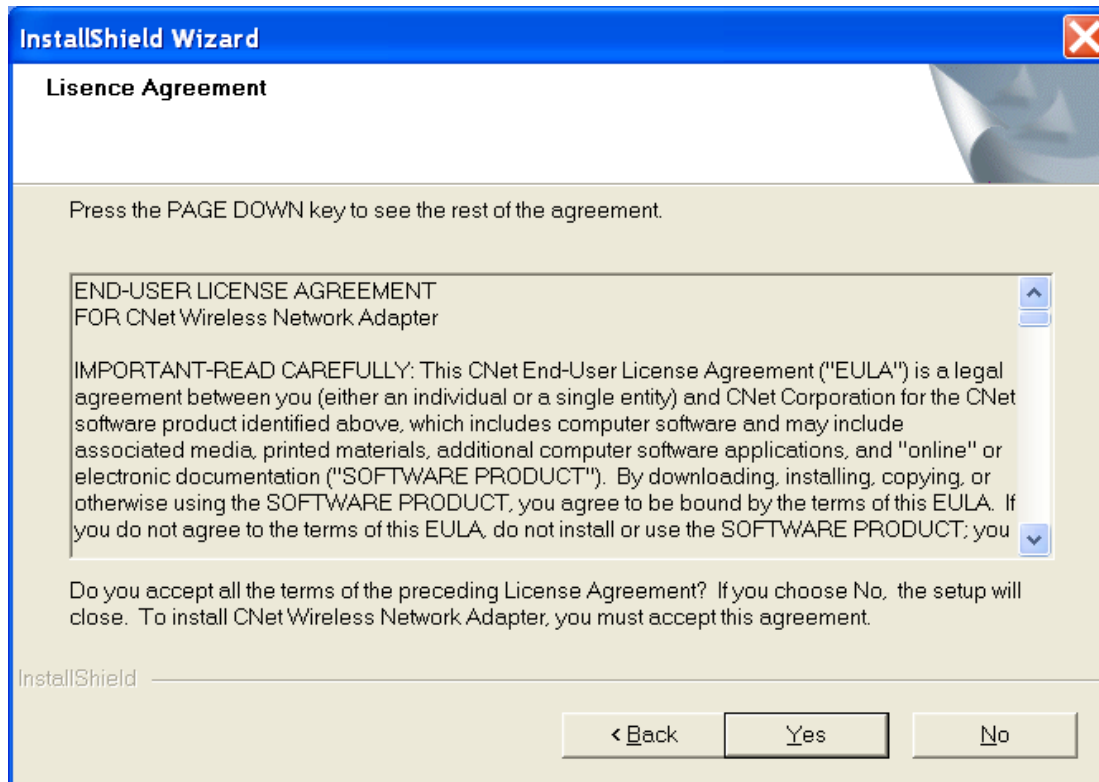
Chapter 4: Installing Driver , Configuration Utility and Hardware for Windows 98SE/ME/2000/XP

Driver Installation for Windows 98SE/ME/2000/XP

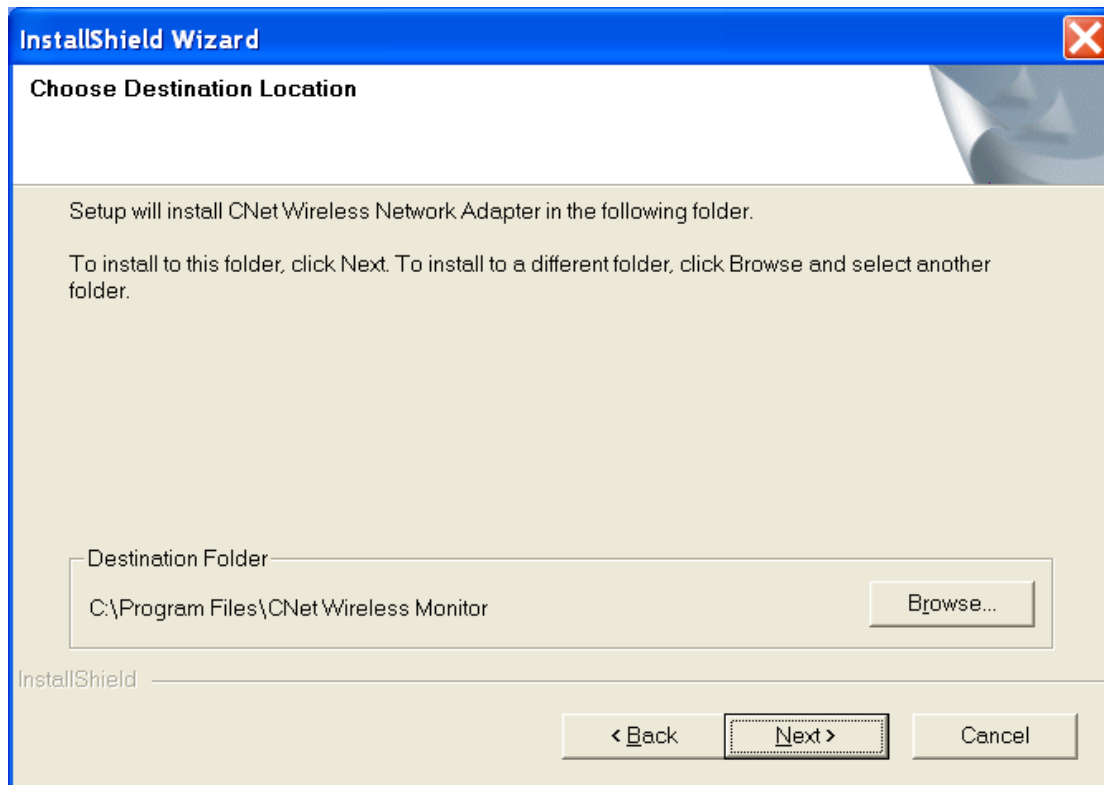
1. Before installing your adapter, there are two ways to install software. One is to insert the Driver CD into your CD-ROM drive. You access to the installation by clicking the **"Start"** button and choosing **"Run"**. The drop-down box provides type **D:\Setup.exe** (where D: denote your CD-ROM drive). Another is to double-click **"My Computer"** and double-click the **Setup.exe** icon in the folder that appears and click on **"Next>"**.



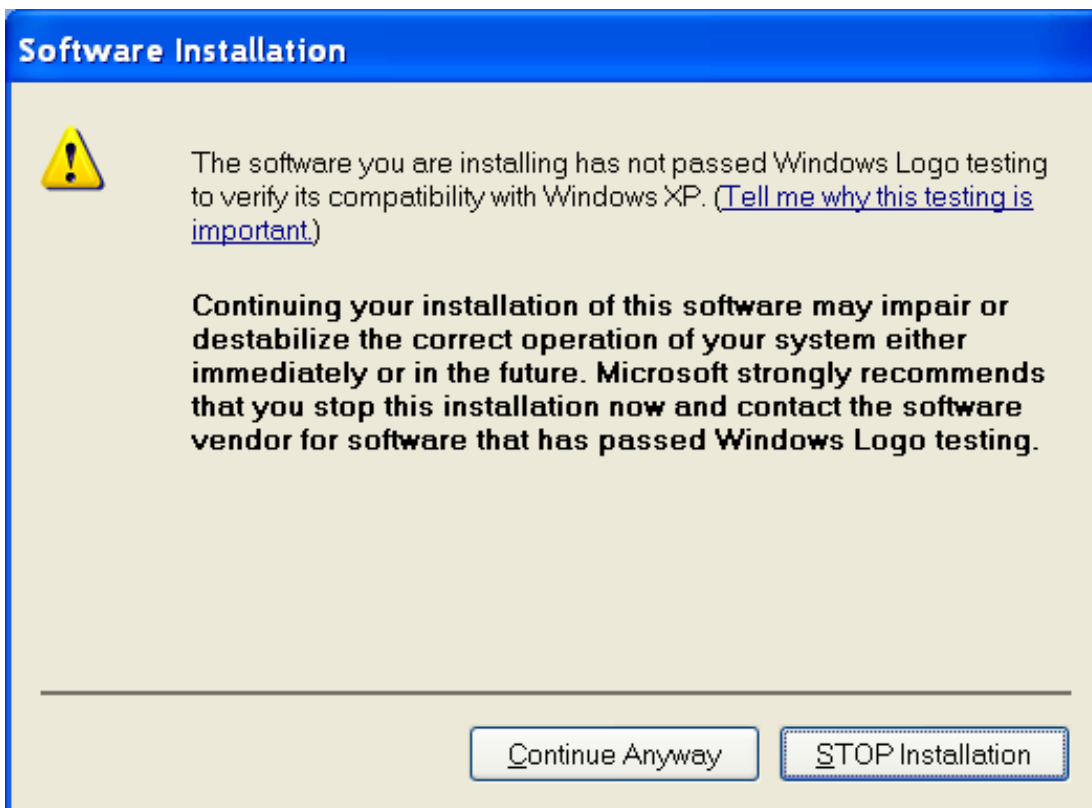
2. The License Agreement screen will appear. Click on Yes.



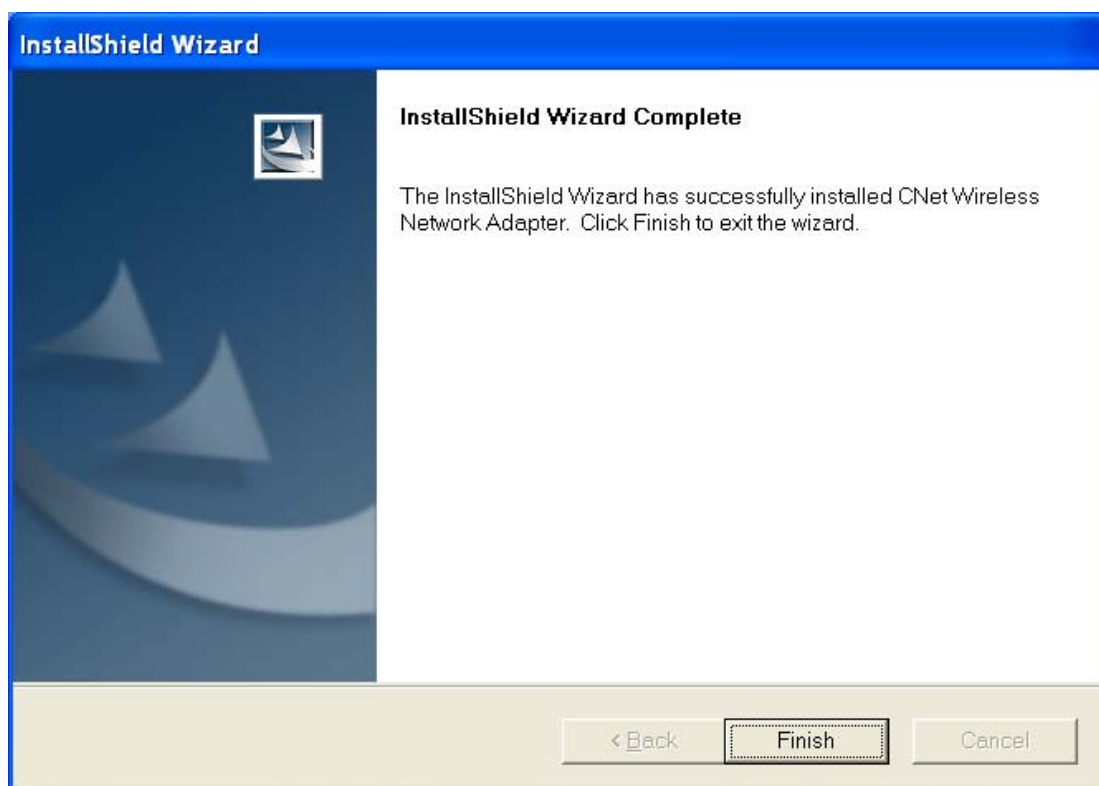
3. In the **Choose Destination Location** page that follows, folder where the configuration utility will be stored can be selected by clicking the Browser button, or enter directly the destination folder name you want, then click on "**Next>**".



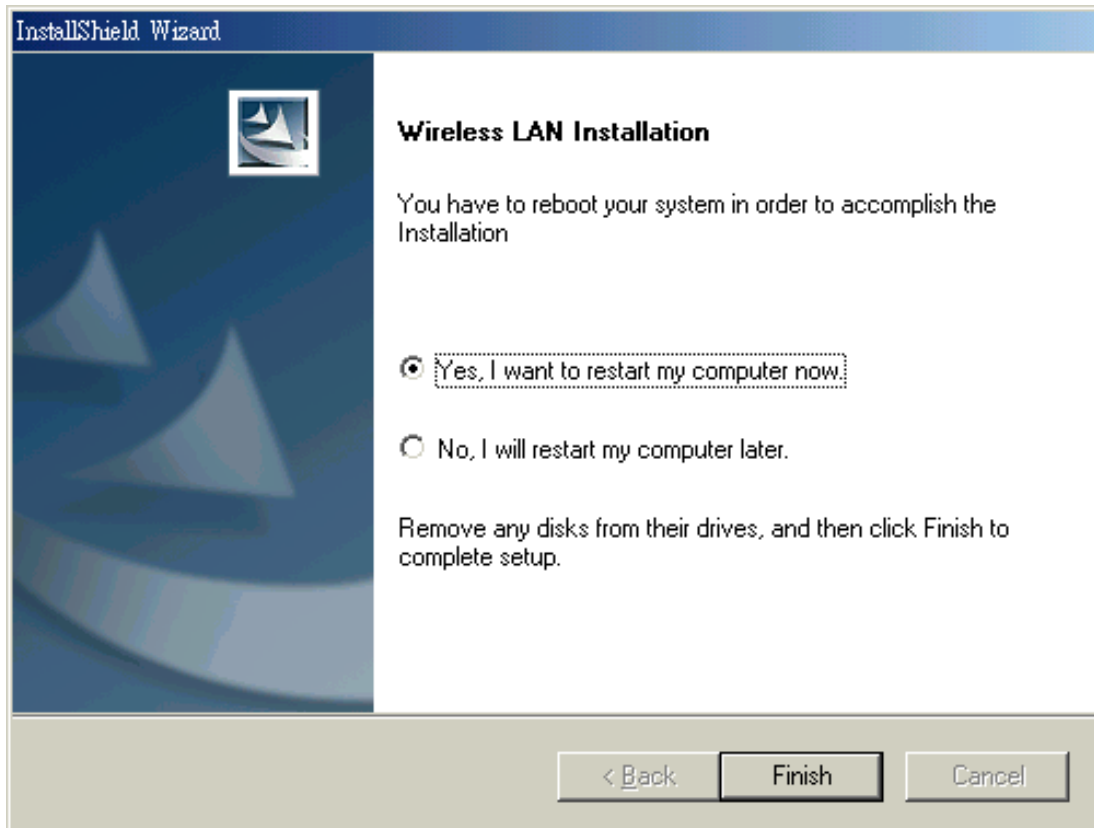
4. The digital Signature Not Found screen will pop up next to inform you the device has not passed Digital Signature testing. Please click on "**Continue Anyway**" to proceed. If you use Windows XP/2000, please follow step 5. If you use Windows 98SE/ME, please follow step 6.



5. For Windows 2000/XP, the following menu pops up, click on **“Finish”** to complete the software installation.



6. For Windows 98SE/ME, the following menu pops up, Select “**Yes, I want to restart my computer now**” and click “**Finish**” to complete the software installation process



Inserting the adapter

To insert the CNet Smart wireless-G PCI Adapter into a desktop computer, do the following:

1. Turn off your desktop PC.
2. Open your PC case and locate an available PCI slot on the motherboard. Check with your computer manufacturer for instructions.
3. Slide the PCI Adapter into the PCI slot. Make sure that all of its pins are touching the slot's contacts. You may have to apply a bit of pressure to slide the adapter all the way in. After the adapter is firmly in place, secure its fastening tab to your PC's chassis with a mounting screw. Then, close your PC.
4. Attach the external antenna to the adapter's antenna port.
5. Power on your desktop PC.

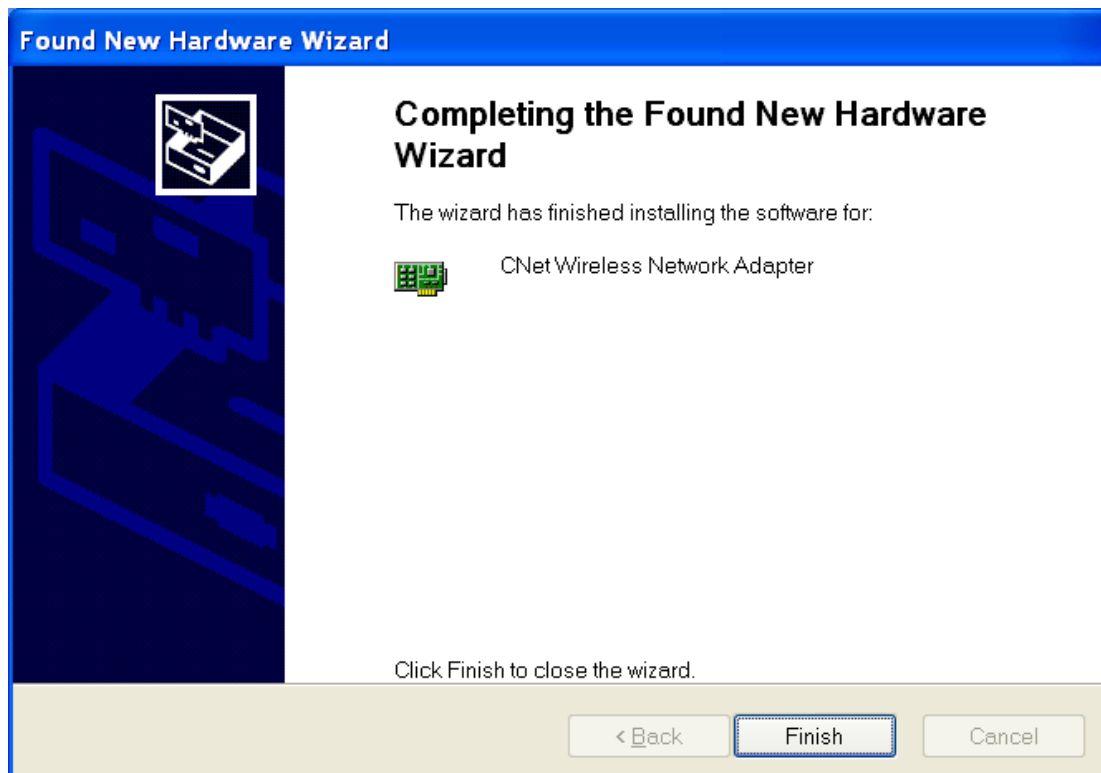
Windows will automatically detect the Adapter. Please select **"Install the software automatically"** then click **"Next>"** when the following page pops up,



For Windows 2000/XP, the following screen appears next, click “**Continue Anyway**”,



Click on “**Finish**” in the next page to finish the installation,



For Windows 98SE/ME, System will restart.

Chapter 5: Using the WLAN Monitor for Windows 98SE/ME/2000/XP

Overview:

Use the WLAN Monitor to check the link information, search for available wireless networks, or create profiles that hold different configuration settings.

Accessing the WLAN Monitor:

After installing the Adapter, the WLAN Monitor icon will appear in your system tray. Double-click the icon.

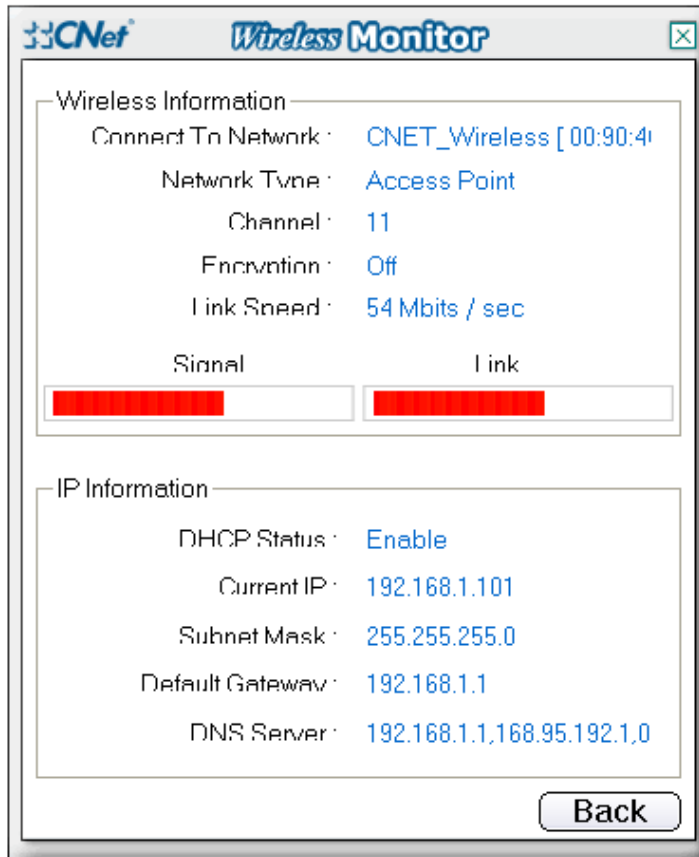
The Link Information screen will appear. From this screen, you can find out the intensity of the current wireless signal and how good the connection's quality is. You can also click the **"More"** Information button to view additional status information about the current wireless connection. To search for available wireless networks, click the **"Available Networks"** tab. To perform configuration changes, click the **"Profiles Setting"** tab. To know more details of the software, click the **"About"** tab.

Link Information:



Click the **X** (Close) button in the upper right corner to exit the WLAN Monitor.

Click the **"More"** button to view more information about the wireless network connection. Select **Link Information**, we will see the following page displaying Wireless Information and IP Information.



Wireless Information

Connect to Network: Shows the Network's name which you are connected.

Network Type: Access Point or Peer to Peer. The screen indicates whether the Adapter is currently working in ad-hoc or infrastructure mode.

Channel: The channel to which the wireless network devices are set.

Encryption: The status of the encryption security feature.

Link Speed: The speed to which the wireless network devices are connected

Signal: The Signal Strength bar indicates signal strength.

Link: The Link Quality bar indicates the quality of the wireless network connection.

IP Information

DHCP Status: The status of DHCP client.

Current IP: The IP Address of the Adapter.

Subnet Mask: The Subnet Mask of the Adapter

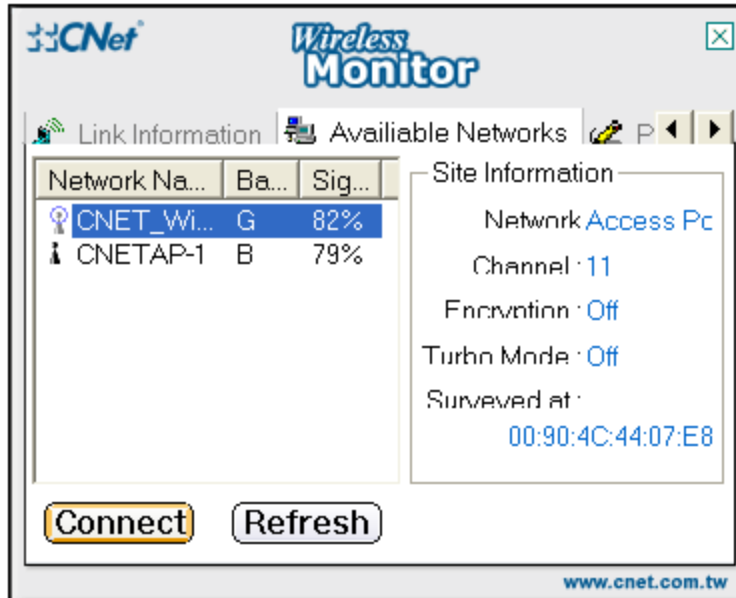
Default Gateway: The Default Gateway address of the Adapter.

DNS Server: The DNS address of the Adapter

Click the "**Back**" button to return to the initial **Link Information** screen. Click the "**X**" (Close) button in the upper right corner to exit the WLAN Monitor.

Available Networks:

Selecting the **Available Networks** displays a list of infrastructure and ad-hoc networks available for connection.



Here, in this page, we have

Network Name: The SSID of the wireless networks available for connection.

Band: The band of the wireless sites available.

Site Information

Network: The mode of the wireless network currently in use.

Channel: The channel to which the wireless network devices are set

Encryption: The status of the encryption security feature.

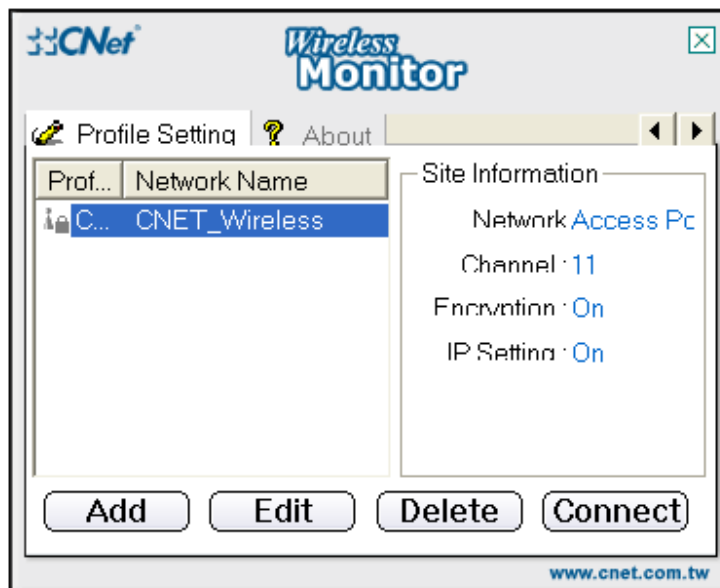
Surveyed at: The MAC address of which the wireless network was scanned.

Refresh: Click the "Refresh" button to perform a new search for available wireless networks status.

Connect: To connect to one of the networks on the list, select the wireless network, and click the "Connect" button. If the wireless network has encryption enabled, you can not connect. If you want to connect, you must add a profile in the **profile Tab**.

Profile Setting:

By selecting the "Profiles Setting", the following screen appears and lets you save different configuration profiles for different network setups.



Here, in this page, we have

Profile Name: Name of the connection profile.

Network Name: The wireless network's unique name, as in the connection profile.

Site Information:

Network: The mode of the wireless network currently in use.

Channel: The channel to which the wireless network devices are set.

Encryption: The status of the encryption security feature.

IP Setting: The CNet Smart Wireless-G Adapter's IP

Add: Click the "**Add**" button to create a new profile, See the next section, "Creating a New Profile"

Edit: Select a profile, and click the "**Edit**" button to change an existing profile.

Delete: Click the "**Delete**" button to delete a profile.

Connect: To connect to a wireless network, using a specific profile, select the profile, and click the "**Connect**" button.

Click the "**X**" (Close) button in the upper right corner to exit the WLAN Monitor.

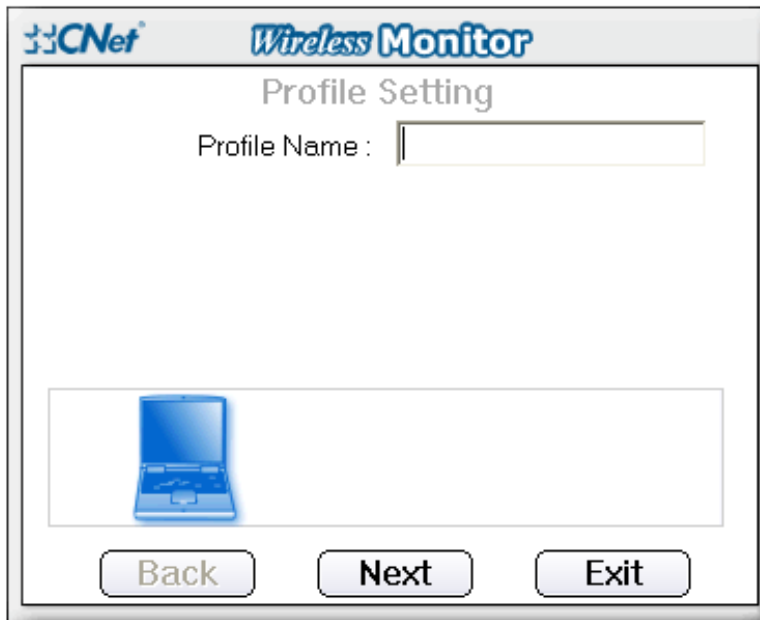
About

The "**About**" screen shows the release information for the Utility Version, Driver Version, Firmware Version, and MAC Address as shown in the following example.



Creating a New Profile:

1. On the Profiles screen, click the **"New"** button to create a new profile and the following screen appears, enter a name for the new profile. Click **"Next"** to save the profile name and open up the next page filling in necessary information. Clicking **"Exit"** simply returns you back to the previous page.



2. In the next page the following information needs to be filled in order create a new profile to be created. After done, Click the **"Next"** button to continue or the **"Back"** button to return to the previous screen.

Network Name: Fill the SSID of the wireless network

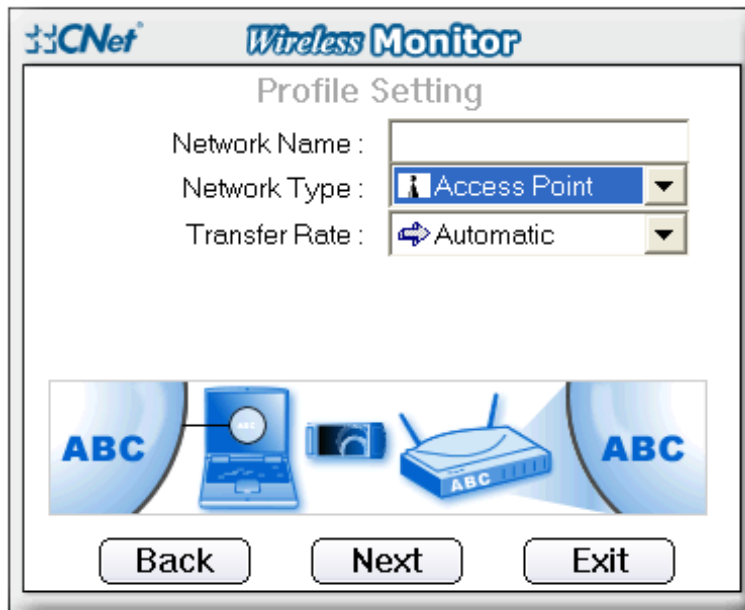
Network Type: There are two wireless modes.

- (A) **Access Point** - This mode allows wireless and wired networks to communicate through an

Access Point.

- (B) **Peer to Peer** - This mode allows wireless-equipped computers to communicate directly with each other. No access point is used.

Transfer Rate: Select the speed you want to use in the drop-down manual of the Transfer Rate

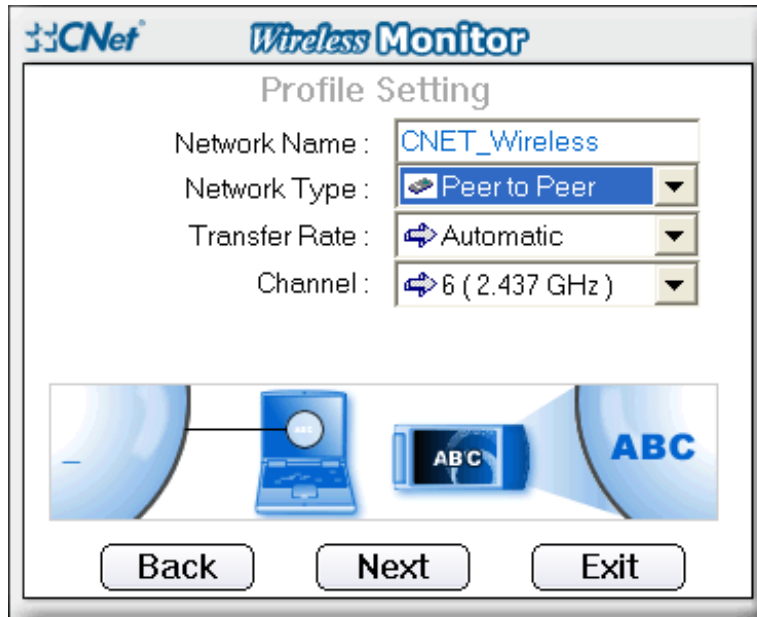


3. The Profile Settings screen will appear now after filling in the information. If you choose “**Access Point Mode**”, go to **Step 4** now. If you choose “**Peer to Peer**” Mode, select the correct settings as in the below page. Click the “**Next**” button, and go to next page. Click the “**Back**” button if you need to change any settings.

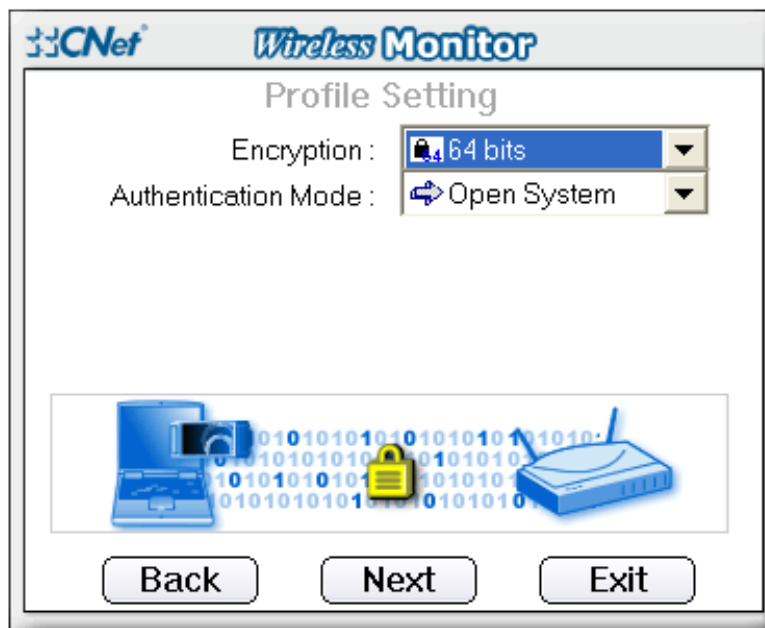
Network Name- Fill the SSID of the wireless network

Transfer Rate- Select the speed you want to use in the drop-down manual of the Transfer Rate

Channel - The channel you choose should match the channel set on the other devices in your wireless network.



5. The Profile Settings screen has drop-down menu to select the encryption type. If you enable encryption function, Select the encryption type and Authentication Mode. Click the **Next** button to continue or the **Back** button to return to the previous screen. If you disable Encryption, go to **Step7**.

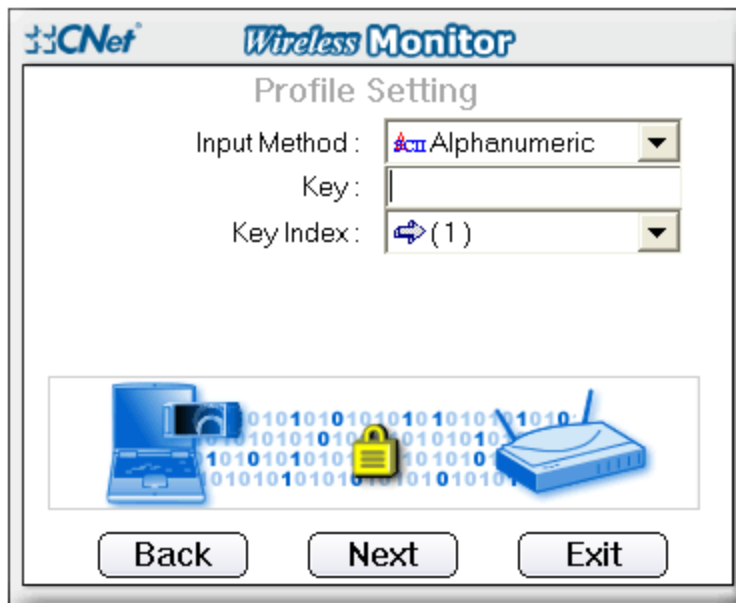


Encryption (Off/64 bits /128 bits) - If you do not want to use WEP encryption, choose **Off**. To use WEP encryption (recommended to increase network security), select **64 bits** or **128 bits** from the drop-down menu, and select Authentication Mode, Open System/ Shared Key.

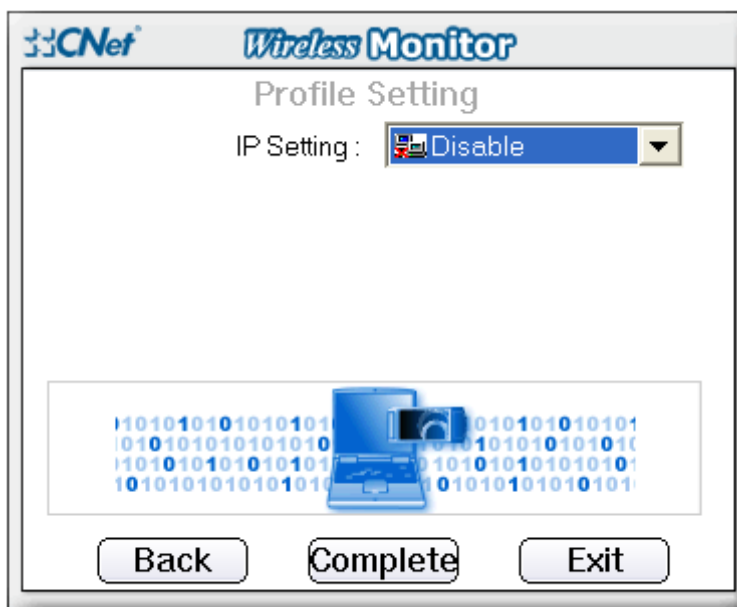
5. Select which Input Method you want to use. It supports three modes: Alphanumeric/ Hexadecimal/Passphrase. Enter your encryption key.

Key 1 - This WEP key must match the WEP key of your wireless network. If you are using 64-bit WEP encryption, then the key must consist of exactly 10 hexadecimal characters. If you are using 128-bit

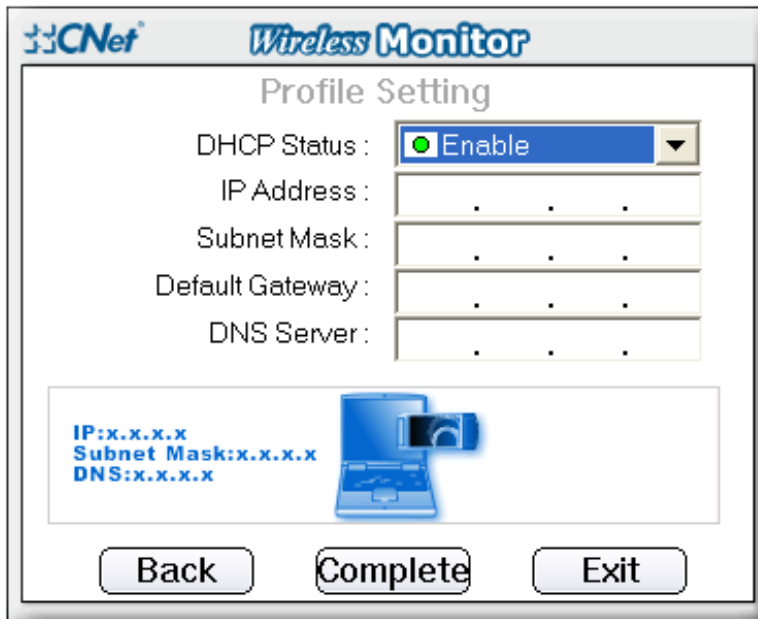
WEP encryption, then the key must consist of exactly 26 hexadecimal characters. Valid hexadecimal characters are "0" to "9" and "A" to "F".



6. The Profile Setting screen will appear now. If your wireless device doesn't use IP, please select **"Disable"** and press **"Complete"** to finish **"Add a new profile"**. If your wireless device needs an IP address. Select **"Enable"** and go to **Step 7**



7. If your network has a DHCP server, Select **"Enable"** in drop-down menu of the DHCP Status. Click the **"Complete"** button to finish **"Add a new profile"** or click the **Back** button to return to the previous screen.



CNet Wireless Monitor

Profile Setting

DHCP Status: Enable

IP Address: . . .

Subnet Mask: . . .

Default Gateway: . . .

DNS Server: . . .

IP: x.x.x.x
Subnet Mask: x.x.x.x
DNS: x.x.x.x

Back Complete Exit

If your network does not have a DHCP server, click the radio button next to **“Specify the IP address”**. Then enter an **IP Address**, **Subnet Mask**, **Default Gateway**, and **DNS** appropriate settings for your network. Enter each address in this format: **xxx.xxx.xxx.xxx** (the x’s represent the numbers that make up each address). You must specify the IP Address and Subnet Mask on this screen. If you are unsure about the Default Gateway and DNS addresses, then leave these fields alone.

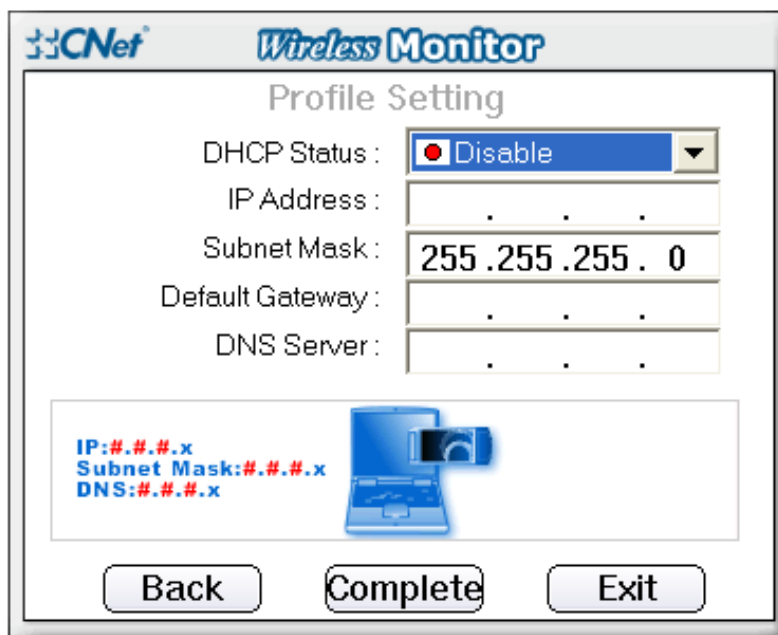
IP Address - This IP Address must be unique to your network.

Subnet Mask - The Adapter’s Subnet Mask must be the same as your wired network’s Subnet Mask.

Default Gateway - Enter the IP address of your network’s Gateway here.

DNS - Enter the DNS addresses of your Ethernet (wired) network here.

Click the **“Complete”** button to continue or the **“Back”** button to return to the previous screen.



CNet Wireless Monitor

Profile Setting

DHCP Status: Disable

IP Address: . . .

Subnet Mask: 255 .255 .255 . 0

Default Gateway: . . .

DNS Server: . . .

IP: #.#.#.x
Subnet Mask: #.#.#.x
DNS: #.#.#.x

Back Complete Exit

Appendix A: Troubleshooting

This appendix provides solutions to problems that may occur during the installation and operation of the Wireless-G Cardbus Adapter. Read the descriptions below to solve your problems. If you can't find an answer here, check the CNet website at www.cnet.com.tw.

1. My computer does not recognize the Adapter.

- Make sure the adapter is properly inserted into the CardBus slot. Note that the Adapter can be inserted either way, but is correctly only when it is inserted with the "Instant Wireless" logo on the front of the Adapter unseen. If in doubt, try inserting the Adapter both ways. The Adapter will slide in further when it is correct.

2. The Adapter does not work properly.

- Reinsert the Adapter into your notebook's CardBus slot. A beep should be heard if the Adapter is properly inserted.
- For non-Windows environments, make sure that a PCMCIA card service driver is installed on your PC.
- Open the **Control Panel** and click the **PC Card**. Check whether it has a PCMCIA card in one of the sockets or not. If you find the Adapter in one of the sockets, it means that the Adapter has been detected properly. If you see a yellow question mark, the resources are in conflict.
- Right-click **My Computer** and select **Properties**. Select **Device Manager** and click the **Network Adapter**. You will find the **CNet Wireless Network Adapter** if it is installed successfully. If you see the yellow exclamation mark, the resources are in conflict. Click **PCMCIA card** and then click **PCMCIA card service**. You will see the status of the Adapter. If there is a yellow question mark, please check the following:

- Make sure that your notebook has a free IRQ.
- Make sure that you have inserted the right Adapter and installed the proper driver.

If the Adapter does not function after attempting the above steps, remove the Adapter and do the following:

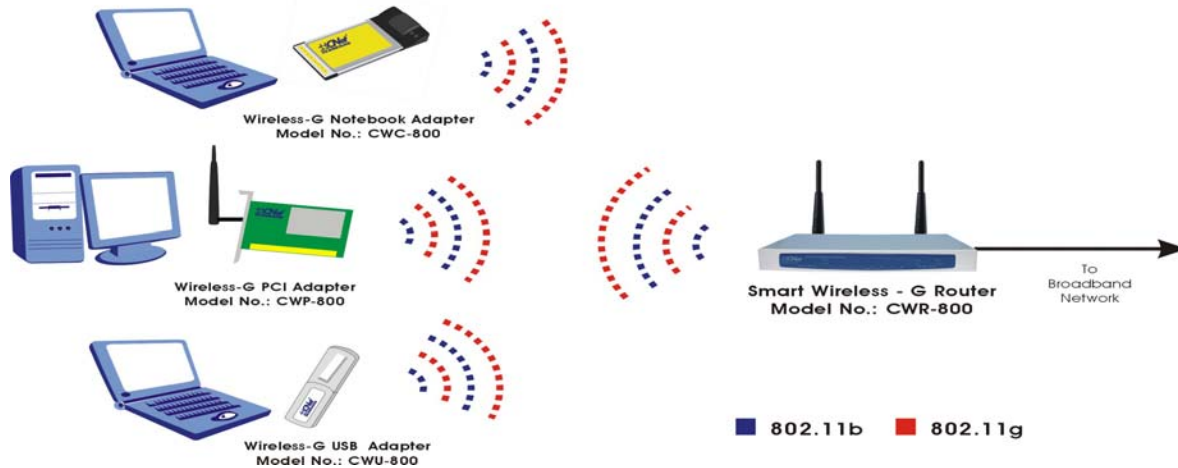
- Uninstall the driver software from your PC.
- Restart your PC and repeat the hardware and software installation as specified in this User Guide.

3. I cannot communicate with a wired computer linked via an access point in the infrastructure configuration.

- Make sure that the PC is powered on.
- Make sure that the Adapter is configured with the same SSID and security options as the other computers in the infrastructure configuration.

Appendix B: Application & Specifications

Application



Product Name	Wireless-G PCI Adapter.
Model Number	CWP-800
Standards	802.11g, 802.11b
Channels	10-13 (France, Jordan) 1-11 (U.S.) 1-13 (Elsewhere Worldwide) 1-13,14 (Japan)
Modulation	802.11b: CCK, DQPSK, DBPSK 802.11g: OFDM
Network Protocol	TCP/IP, IPX, NDIS 4, NDIS 5, NDIS 5.1, NetBEUI
Software Support	Windows 98SE/ME/2000/XP
Interface	PCI
Antenna	External Antenna with diversity support
Transmit Power	15 dBm
Sensitivity	-80 dBm
LED Indicators	Active
WEP Key Bits	40-bit , 64-Bit and 128-Bit
Dimensions	122mm x 220mm x 23mm
Unit Weight	0.13 kg
Power	3.3V
Operating Temp.	32°F to 150°F (0°C to 65°C)
Storage Temp.	-40°F to 185°F (-40°C to 85°C)
Operating Humidity	0% to 95%, Non-Condensing
Storage Humidity	0% to 95%, Non-Condensing

Free Manuals Download Website

<http://myh66.com>

<http://usermanuals.us>

<http://www.somanuals.com>

<http://www.4manuals.cc>

<http://www.manual-lib.com>

<http://www.404manual.com>

<http://www.luxmanual.com>

<http://aubethermostatmanual.com>

Golf course search by state

<http://golfingnear.com>

Email search by domain

<http://emailbydomain.com>

Auto manuals search

<http://auto.somanuals.com>

TV manuals search

<http://tv.somanuals.com>