



**COMSOL**

**USER MANUAL**  
**USB Bluetooth Adapter**



**UBT-120**

---

# CONTENT

<b>1. Introduction</b>	<b>2</b>
<b>2. Package Content</b>	<b>2</b>
<b>3. Product Features</b>	<b>2</b>
<b>4. System Requirements</b>	<b>3</b>
<b>5. Driver Installation</b>	<b>3</b>
5.1 Windows® 98SE/ME/2000/XP Driver Installation	3
5.2 Windows® 98SE Platform	9
<b>6. Bluetooth Logo Conditions</b>	<b>10</b>
<b>7. FCC Statement</b>	<b>11</b>
<b>8. Disclaimer</b>	<b>11</b>

---

## 1. Introduction

The Comsol Bluetooth Adapter is a quick and easy solution for users wanting to add Bluetooth capability to their desktop or notebook. It plugs directly into your USB port of your computer and enables wireless connectivity with Bluetooth devices including mobile phones, PDAs, printers and other computers.

Another benefit of Bluetooth wireless technology is the ability to connect your notebook to the internet via a Bluetooth enabled mobile phone (GSM, GPRS or CDMA) or Bluetooth LAN access point.

## 2. Package Content

- Hardware:
  - Comsol USB Bluetooth Adapter
  - USB cable
- Software:
  - Driver software and manual on CD

## 3. Product Features

- Bluetooth specification V1.1 compliant
- Full speed Class 2 Bluetooth operation
- Operation range - 10 metres (33ft) range
- Integrated Antenna
- Data transfer rate up to 1Mbps
- Recive sensitivity - 89dBm
- Low power saving features
- Supports 2.4GHz FHSS (Frequency Hopping Spread Spectrum)
- Supports Windows 98SE/ME/2000/XP

---

## 4. System Requirements

### PC

- IBM® PC Pentium 133 or higher or compatible system
- Available USB2.0 port (up to 480 Mbps) or available USB1.1 port (up to 12Mbps)
- Windows® 98, Windows® ME, Windows® 2000 and Windows® XP

## 5. Driver Installation

### 5.1 Windows® 98SE/ME/2000/XP Driver Installation

**DO NOT INSERT THE BLUETOOTH ADAPTER BEFORE FOLLOWING THESE INSTRUCTIONS**

5.1.1 Insert the supplied CD disk into the CD-ROM drive.

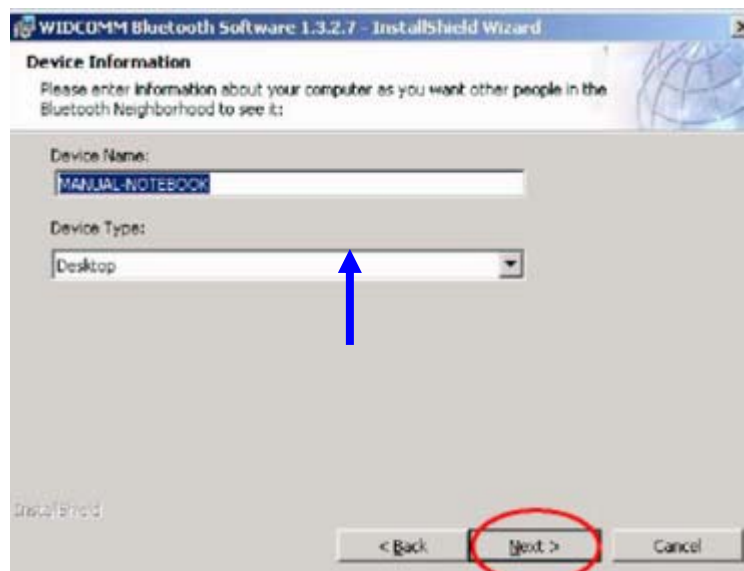
5.1.2 The CD will auto-run and the Setup screen will appear. Click *Next* to proceed.



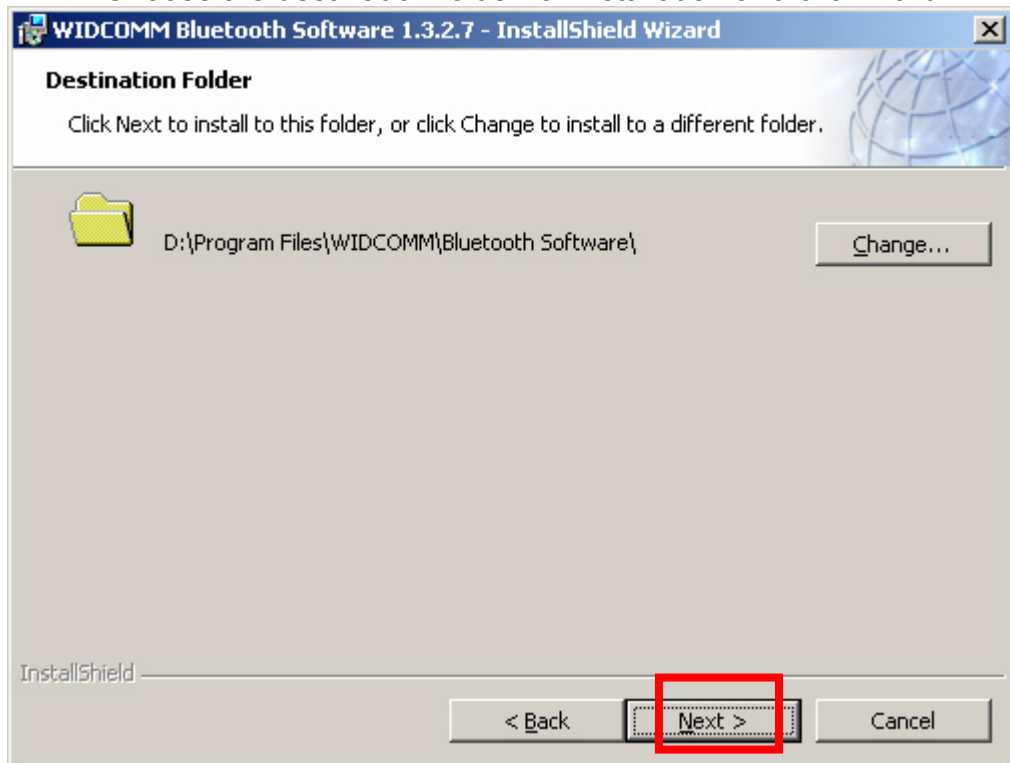
- 5.1.3 Select "I accept ..." to enable installation of the software and click *Next*.



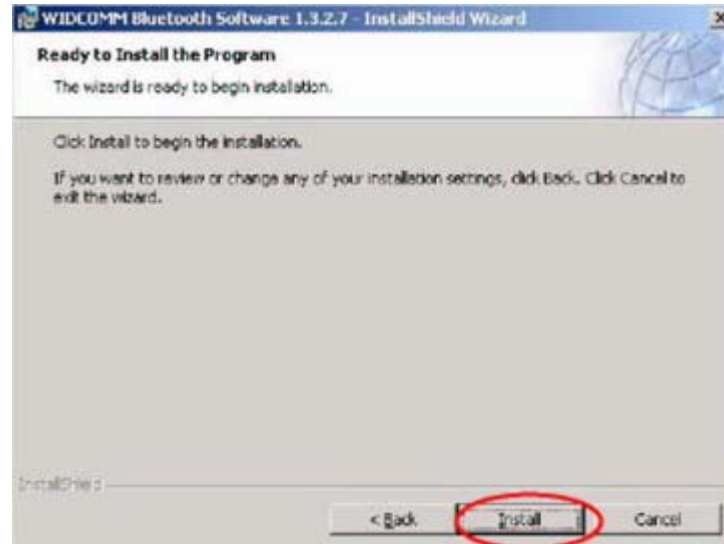
- 5.1.4 NOTE: Depending on the OS installed, this screen may not appear during initial installation.



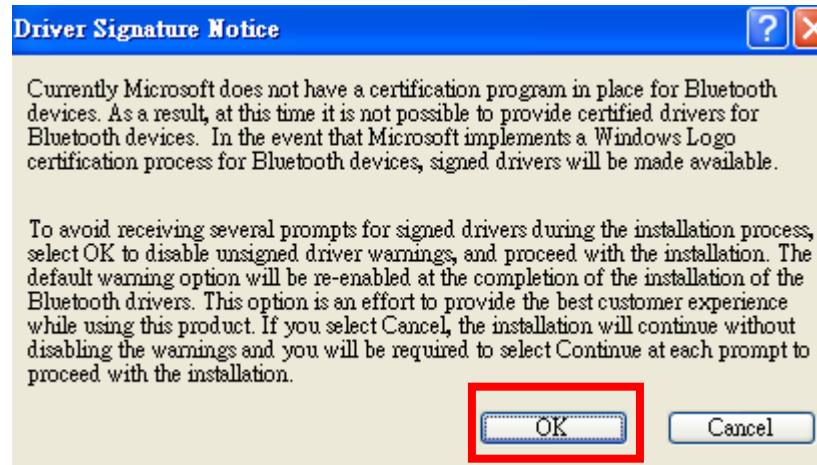
Choose the destination folder for installation and click *Next*.



5.1.5 Click *Install* to confirm installation of the software.

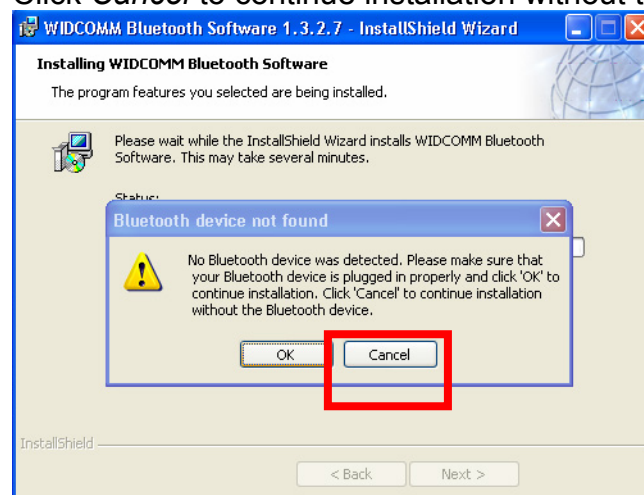


- 5.1.6 Click **OK** to disable unsigned driver warnings and proceed with the installation.

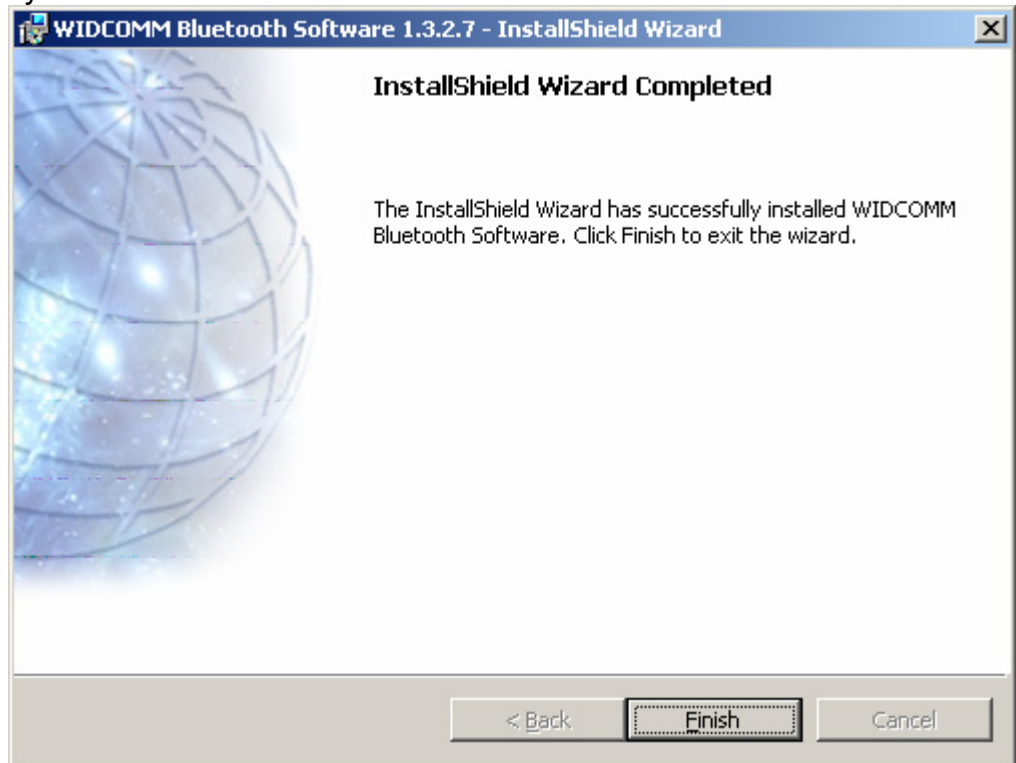


- 5.1.7 **PLEASE DO NOT CONNECT THE COMSOL USB BLUETOOTH ADAPTER**

Click *Cancel* to continue installation without the Bluetooth device.



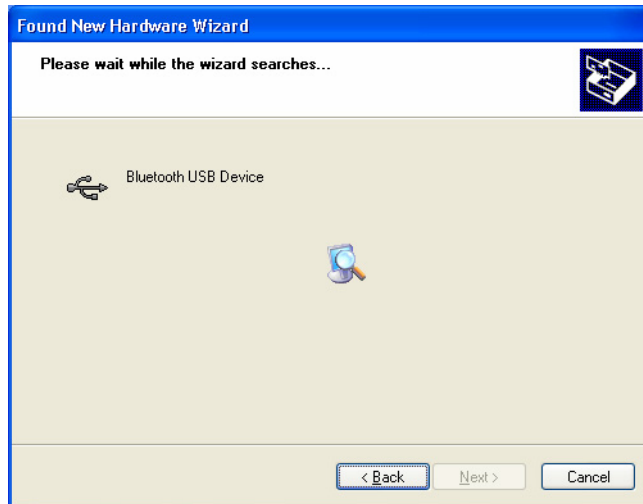
- 5.1.8 When installation is completed, follow the instructions to reboot the system.



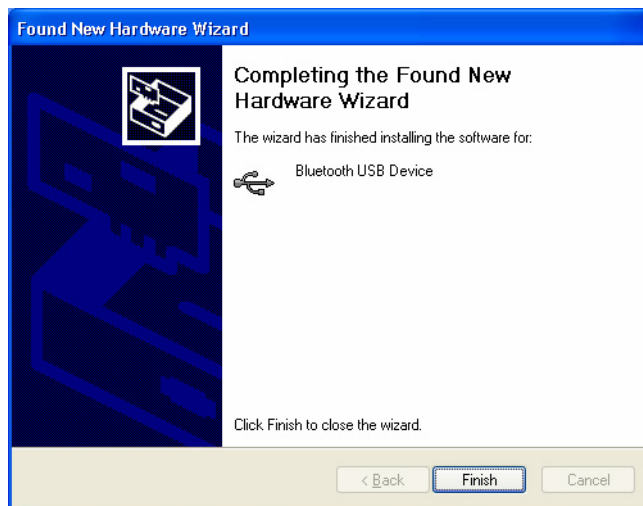
- 5.1.9 Insert the Comsol USB Bluetooth Adapter into an available USB port of the PC after the software installation is complete and the system has rebooted. After the Comsol Bluetooth Adapter is inserted, the *Found New Hardware Wizard* will pop up. Follow the on-screen instructions to install the driver.







5.1.10 After completion of the driver installation, an icon will show up at the lower-right corner of the desktop, announcing the availability of the new hardware.

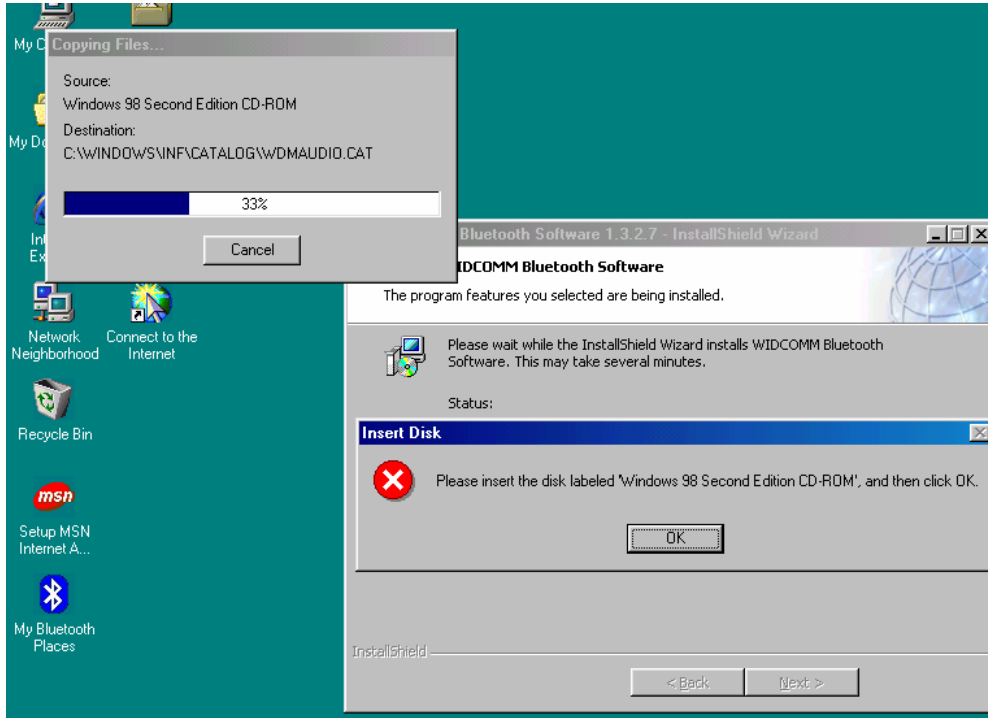


---

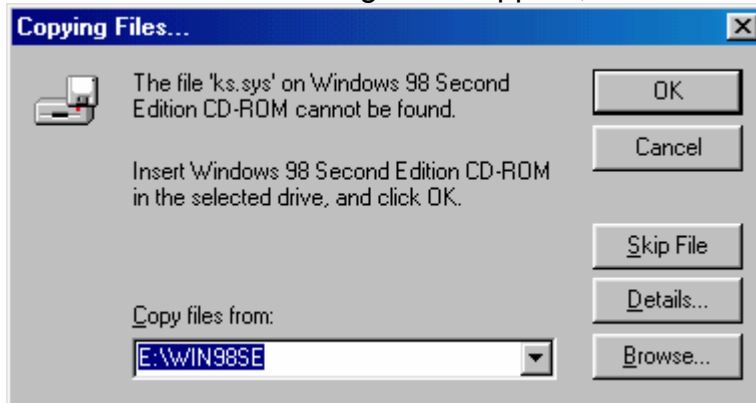
## 5.2 Win98SE platform

5.2.1 When installing, it would request the Win98 CD as below.

5.2.2 Click "OK".



5.2.3 And then the dialog would appear, Click "Cancel".



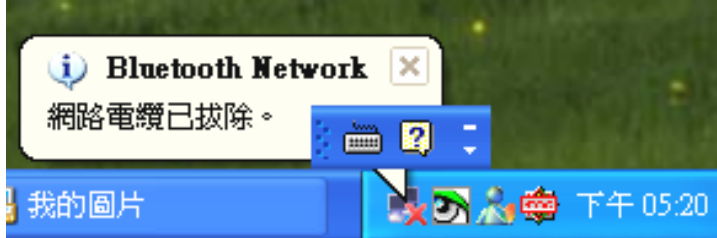
5.2.4 Then wait the installation finished, and reboot the system. If Windows booted, insert the dongle. The driver would auto-loaded.

---

## 6. Bluetooth Logo Conditions

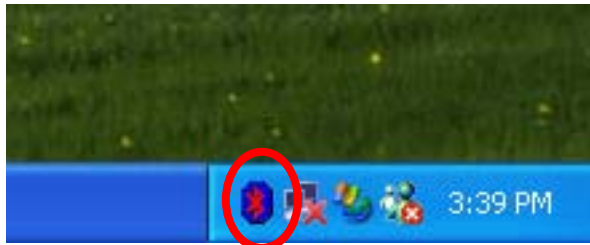
### 6.1 Condition 1: Disconnection of the Bluetooth Network

(The Bluetooth Network is disconnected while the Bluetooth dongle is still plugged in and the software is under operation.)



### 6.2 Condition 2: Failure to detect the Bluetooth dongle

(The Bluetooth icon turns red, indicating the failure to detect the Bluetooth dongle.)



### 6.3 Condition 3: Availability of the Bluetooth dongle

(The Bluetooth icon turns white, indicating the availability of the Bluetooth dongle.)



---

## 7. FCC Statement

This device generates and uses radio frequency and may cause interference to radio and television reception if not installed and used properly. This has been tested and found to comply with the limits of a Class B computing device in accordance with the specifications in Part 15 of FCC Rules. These specifications are designed to provide reasonable protection against such interference in a residential installation. However, there is no guarantee that interference will not occur in a particular installation. If this device does cause harmful interference to radio or television reception, which can be determined by plugging the device in and out, the user can try to correct the interference by one or more of the following measures:

- Reorient or relocate the receiving antenna.
- Increase the separation between the device and receiver.
- Connect the computer into an outlet on a circuit different from that to which the receiver is connected.
- Consult the dealer or an experienced radio/TV technician for help. Consult the dealer or an experienced radio/TV technician for help.

## 8. Disclaimer

Information in this document is subject to change without notice. The manufacturer does not make any representations or warranties (implied or otherwise) regarding the accuracy and completeness of this document and shall in no event be liable for any loss of profit or any other commercial damage, including but not limited to special, incidental, consequential, or other damages.

No part of this document may be reproduced or transmitted in any form by any means, electronic or mechanical, including photocopying, recording or information recording and retrieval systems without the express written permission of the manufacturer.

All brand names and product names used in this document are trademarks, or registered trademarks of their respective holders.

## Free Manuals Download Website

<http://myh66.com>

<http://usermanuals.us>

<http://www.somanuals.com>

<http://www.4manuals.cc>

<http://www.manual-lib.com>

<http://www.404manual.com>

<http://www.luxmanual.com>

<http://aubethermostatmanual.com>

Golf course search by state

<http://golfingnear.com>

Email search by domain

<http://emailbydomain.com>

Auto manuals search

<http://auto.somanuals.com>

TV manuals search

<http://tv.somanuals.com>