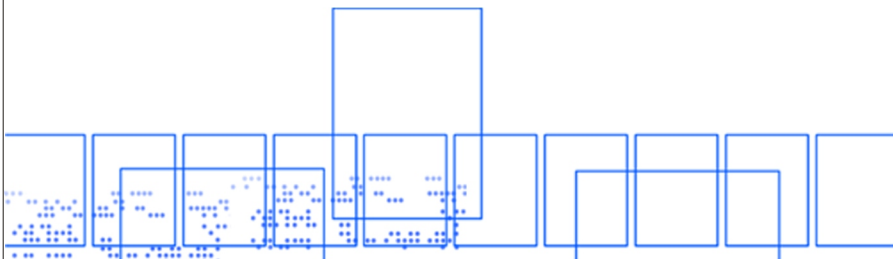


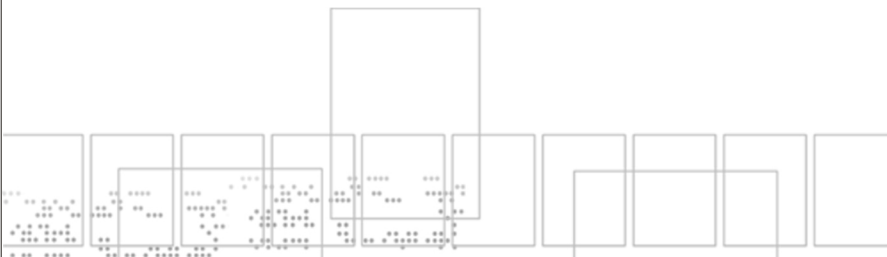
# User Manual





## Table of Contents

● <b>Welcome</b> .....	1.
● <b>Getting Started</b> .....	2.
-Contents of package.....	2.
-System Requirements.....	3.
-Camera Feature.....	4.
-LCD Screen Display Definition.....	5.
● <b>Powering Up</b> .....	6.
-Battery Installation	
-Turning Camera ON/OFF	
-Sleep Mode	
● <b>Taking Pictures</b> .....	7.
● <b>Install Arcsoft Programs and Camera Drivers</b> .....	8.
-Install Camera Driver.....	8.
-Arcsoft Photo Impression 4.0.....	9.
-Arcsoft Photo Base 3.0.....	10.
-Arcsoft Video Impression 1.6.....	11.
-QuickTime Player 6.....	12.
● <b>Uninstall Application Programs</b> .....	13.
● <b>Downloading Photos Using PhotoImpression 4.0</b> .....	14.
● <b>Photo and Sharing Management Using PhotoBase 3.0</b> .....	16.
● <b>Video Playback Using VideoImpression 1.6</b> .....	17.
● <b>Playing Movie Clips using QuickTime Player 6</b> .....	18.
● <b>Specifications</b> .....	19.



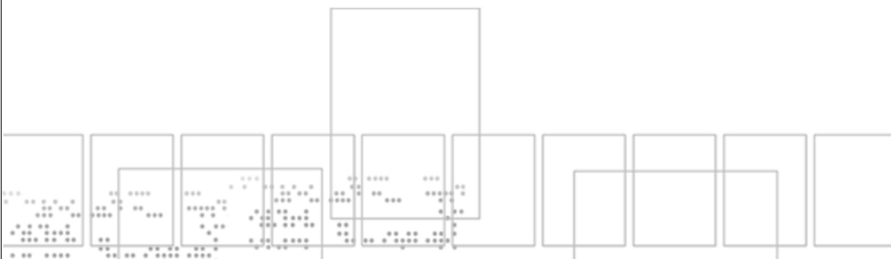


## Welcome

Thank you for choosing the Camera to pursue your digital adventures. Whether you are creating memories of your friends and family or exploring the great outdoors to get the utmost satisfaction from your digital camera, please take a moment to read through this manual. Its contents will send you on an educational journey into your camera's multiple capabilities.

Thank you again for choosing the camera!

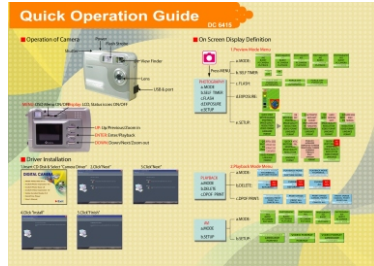
- This camera is not resistant to water and should not be used outdoors in snow or rain. If accidentally dropped in water, please quickly pour out the water. Dry it with sunlight or an air-blower.
- Protect it from excessive humidity. It will wet the lens and the pictures taken will be blurred.
- Do not attempt to disassemble the camera yourself. Always take it to an authorized service facility for repair.
- To store the camera, wrap it in a piece of clean, soft cloth and place it in a cool, dry, dust-free place.





## Getting Started

### Contents of package



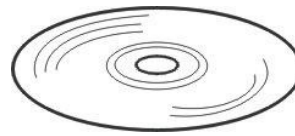
QOG



Digital Camera



Neck Strap



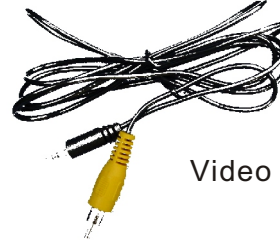
Installation CD(including camera drivers, Arcsoft software and User's Manual)



USB Cable



Carry Bag



Video Cable





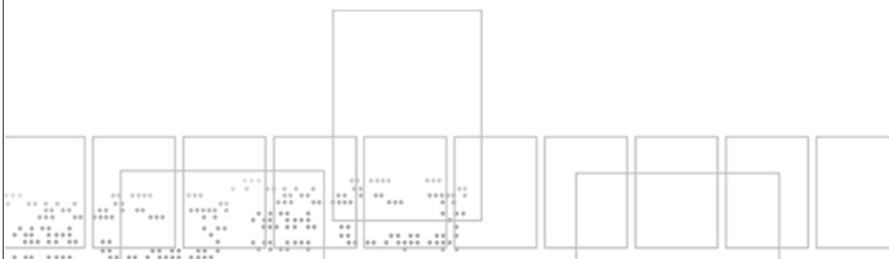
## Getting Started

### System Requirements

- Personal computer, laptop, desktop, or IBM compatible with Pentium 166 MHz minimum, and with an active USB (universal serial bus) port.
- Windows 98SE/ ME/ 2000/ XP, CD ROM drive, color monitor, mouse and keyboard.

#### NOTE

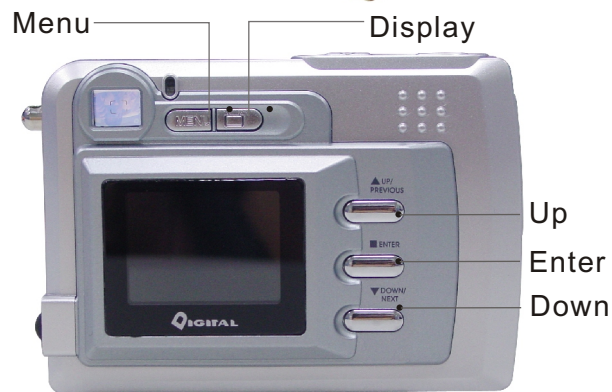
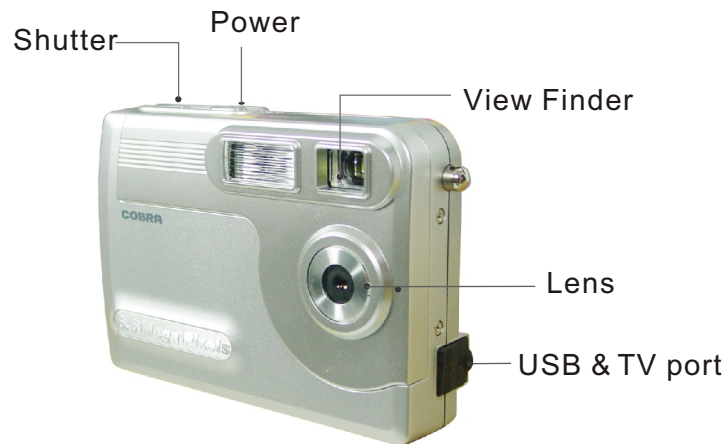
For transferring still images or for video conferencing, your computer must have a modem and communication software for internet connection.





## Getting Started

### Feature



**Menu:** OSD Menu ON/OFF

**Display:** LCD, Status Icons ON/OFF

**Up:** Up / Previous / Zoom in

**Enter:** Menu Enter/Playback

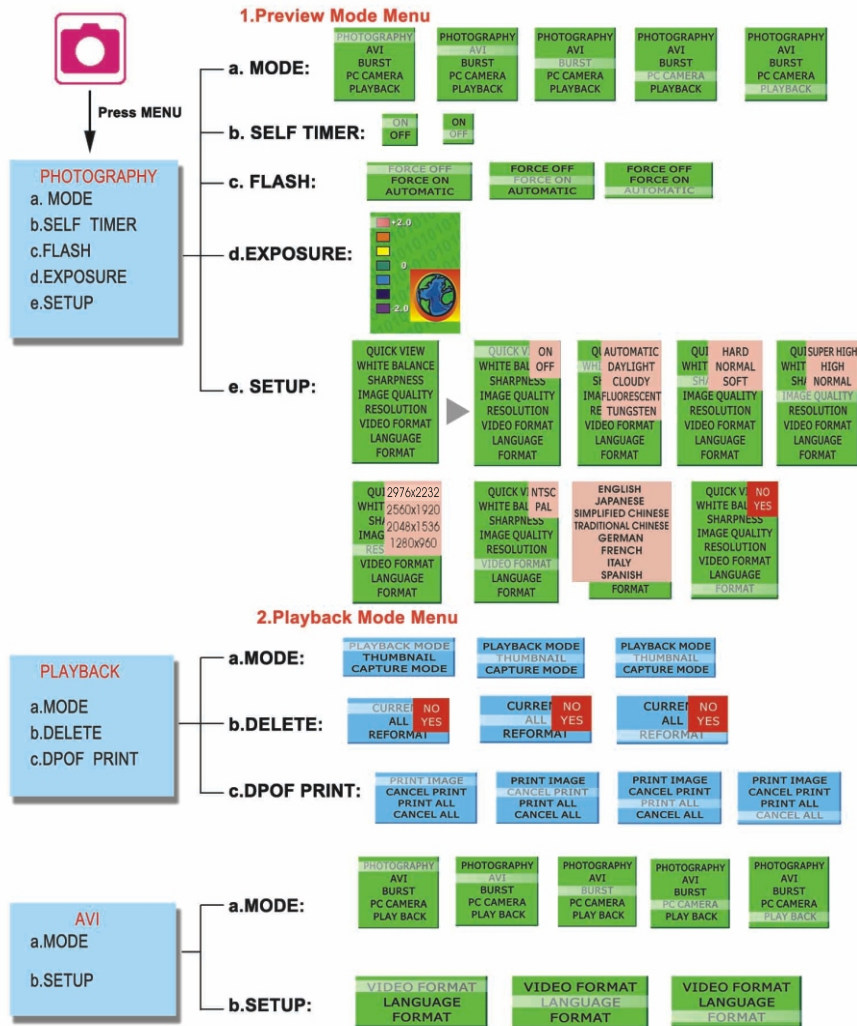
**Down:** Down / Next / Zoom out





# Getting Started

## LCD Screen Display Definition





## Power Up

### Battery Installation

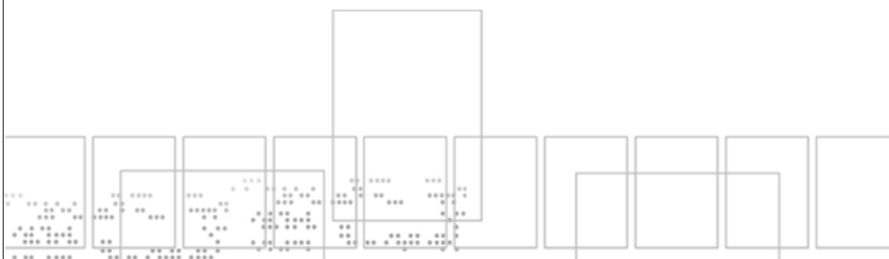
- I. Open the battery chamber cover.
- II. Insert batteries in correct polarity(+ and -)as shown on the inside of the battery chamber.
- III. Close the battery chamber cover.
- IV. Power turns ON after pressing the power button.
- V. The camera is now ready to take pictures.

### Turning the Power ON/OFF

1. Power turns ON after pressing the power button.
2. To turn camera OFF press and Power button until the camera beeps and the LCD screen is blank.
3. To turn camera ON from the OFF mode, press Power button until a beep is heard and the LCD screen turn on.

### Sleep Mode

- When the camera is ON while not being used for 60 seconds, it will automatically perform sleep mode to save battery power.
- To re-activate the camera from sleep mode :
  1. Press the Power button once.
  2. The camera is ready to take the next picture.







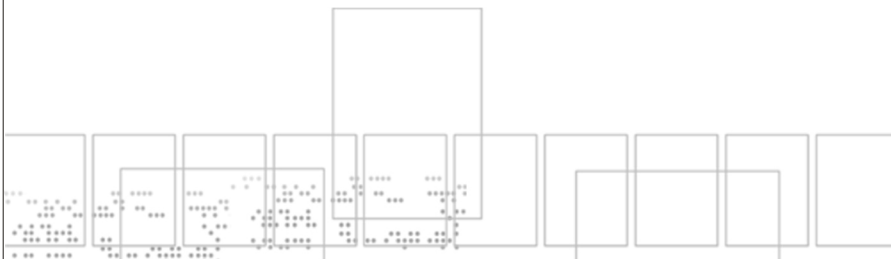
## Taking Pictures

### Taking a Snapshot

1. Aim the camera and compose your image by looking through the viewfinder.
2. Press the shutter button down. A buzz sound will be heard indicating that a picture has been taken.
3. The LCD screen will show the number of pictures taken.

#### NOTE:

- The camera stores all pictures in the built-in memory , Secure Digital Memory Card or Multi Media Card.





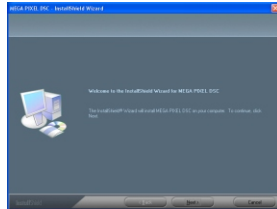
## Install Arcsoft Programs and Camera Drivers

### Install Camera Driver

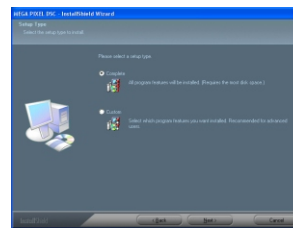
1. Insert CD-Disc & Select "MEGA PIXEL DSC Driver"



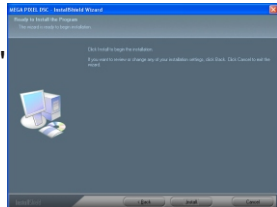
2. Click "Next"



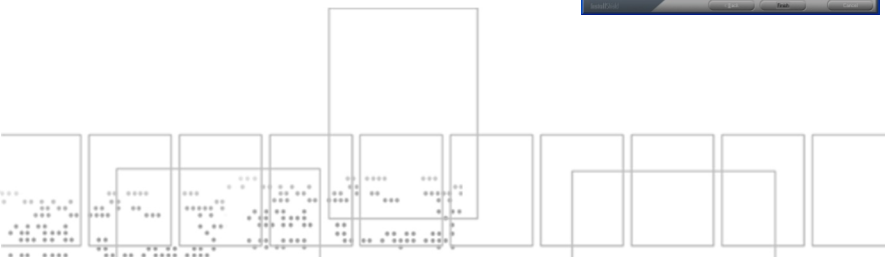
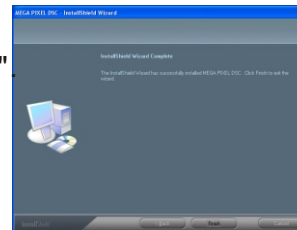
3. Click "Next"



4. Click "Install"



5. Click "Finish"



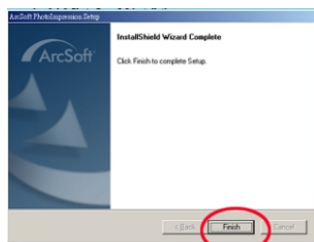
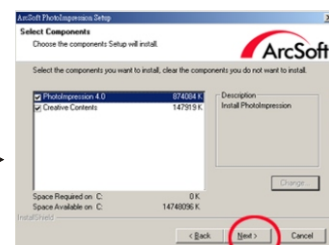
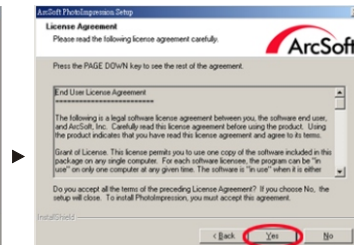
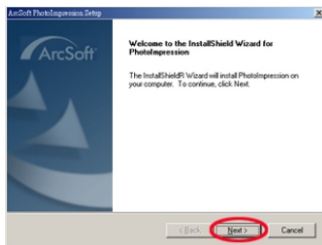


## Install Arcsoft Photo Impression 4.0

1. Turn computer ON.
2. Insert installation CD into your PC's CD-ROM drive
3. Introduction screen will appear automatically.
4. Click "Arcsoft Photo Impression 4.0".



5. Follow on-screen instruction to install camera drivers.



6. Re-starting your computer is recommended.

**NOTE:** To find out more about PhotoImpression 4.0 or how to use it, consult online help by clicking "?" icon or "help" on the pull-down menu.





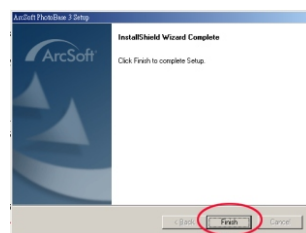
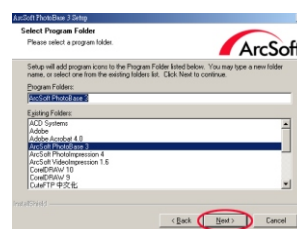
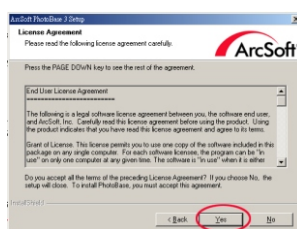
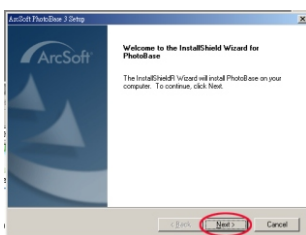
## Install Arcsoft Photo Base 3.0

1. Turn computer ON.
2. Insert installation CD into your PC's CD-ROM drive
3. Introduction screen will appear automatically.



4. Click "Arcsoft PhotoBase 3.0 " .

5. Follow on-screen instruction to install camera drivers.



6. Re-starting your computer is recommended.

**NOTE:** To find out more about Photo Base 3.0 or how to use it, consult online help by clicking "?" icon or "help" on the pull-down menu.





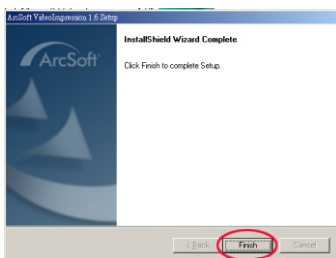
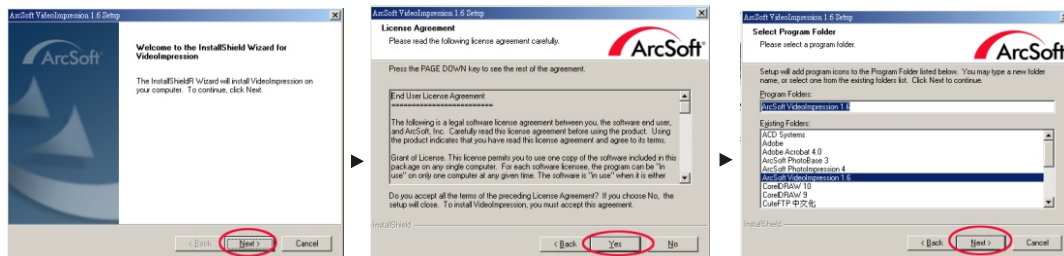
## Install Arcsoft Video Impression 1.6

1. Turn computer ON.
2. Insert installation CD into your PC's CD-ROM drive
3. Introduction screen will appear automatically.



4. Click "Arcsoft VideoImpression 1.6 " .

5. Follow on-screen instruction to install camera drivers.



6. Re-starting your computer is recommended.

**NOTE:** To find out more about Video Impression 1.6 or how to use it, consult online help by clicking "?" icon or "help" on the pull-down menu.





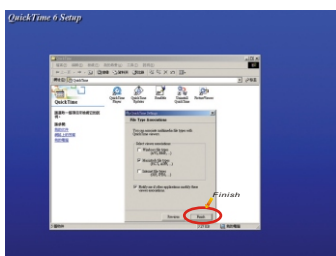
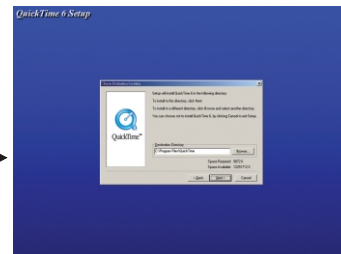
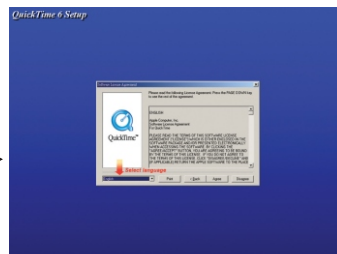
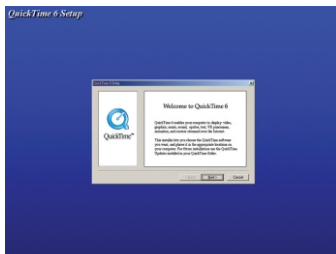
## Install QuickTime Player 6

1. Turn computer ON.
2. Insert installation CD into your PC's CD-ROM drive
3. Introduction screen will appear automatically.



4. Click "QuickTime Player" .

5. Follow on-screen instruction to install camera drivers.



6. Re-starting your computer is recommended.

**NOTE:** To find out more about QuickTime Player 6 or how to use it, consult online help by clicking "?" icon or "help" on the pull-down menu.





## Uninstall Application Programs

### Uninstall Arcsoft Photo Impression 4.0

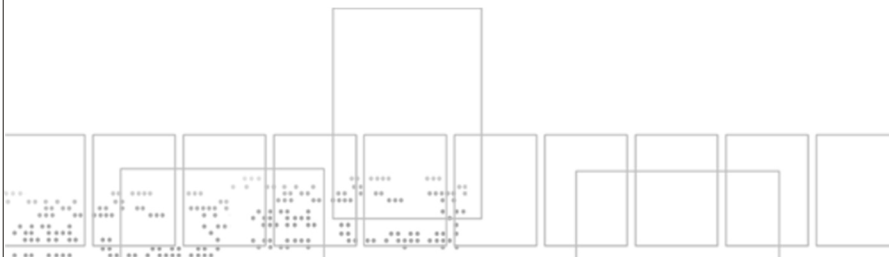
1. Search through Start > Programs > AcroSoft> Photo Impression 4.0 >Uninstall.
2. Follow on-screen instruction to uninstall software.

### Uninstall Arcsoft Photo Base 3.0

1. Search through Start > Programs > AcroSoft> Photo Base 3.0 >Uninstall.
2. Follow on-screen instruction to uninstall software.

### Uninstall Arcsoft Video Impression 1.6

1. Search through Start > Programs > AcroSoft>Video Impression 1.6 >Uninstall.
2. Follow on-screen instruction to uninstall software





## Downloading Photos Using PhotoImpression 4.0

As a USB Mass Storage Device, with the camera connected, its memory will simply appear as a disk drive to the host computer. Any files can be copied to and from the camera's memory, just like any other file on any other disk drive.

**For Windows 98SE user, please go to Microsoft [www.microsoft.com](http://www.microsoft.com) to update Windows for Mass Storage Function Support.**

**(Turn on the camera and connect with USB cable ,  
the camera will set at " **Mass Storage**" Mode.)**

1. Click "PhotoImpression 4.0" icon on desktop,



2. PhotoImpression 4.0 introduction screen will appear.

3. Click "From Folder" button.



4. Click "Browse ".





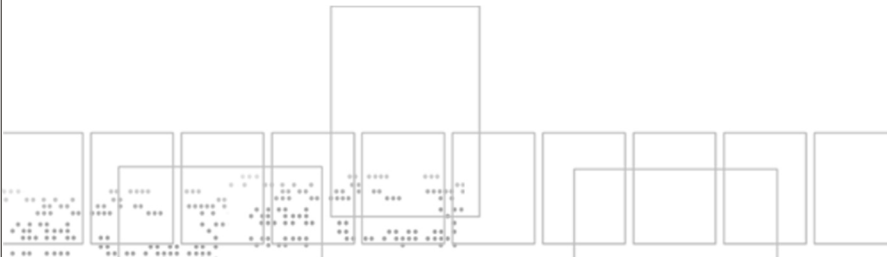


## Downloading Photos Using PhotoImpression 4.0

5. Click "D:\ or G:\(Mass Storage Disk)DCIM" and OK.



6. Use editing tools available on-screen to modify image(s).



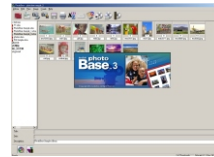


## Photo and Sharing Management Using PhotoBase 3.0

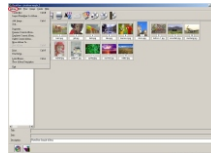
1. Click "PhotoBase 3.0" icon on desktop,



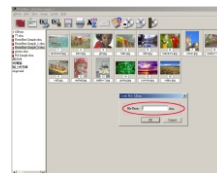
2. PhotoBase 3.0 introduction screen will appear.



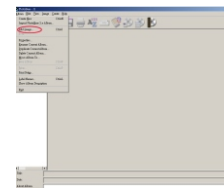
3. Open Album menu bar.



4. Select "Create New" and enter file name.

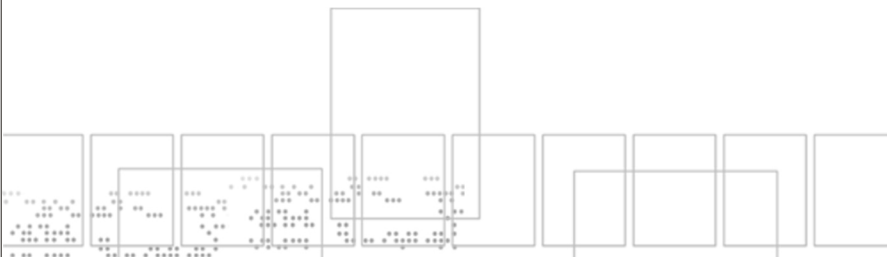


5. Open Album menu bar and select "Add Image".



6. Save the pictures to your computer.

7. Share and manage your pictures.





## Video Playback Using VideoImpression 1.6

**(Please change camera to PC Camera Mode)  
MENU \ Mode\ PC Camera**

1. Click "Videoimpression 1.6" icon on desktop,



2. VideoImpression 1.6 introduction screen will appear.



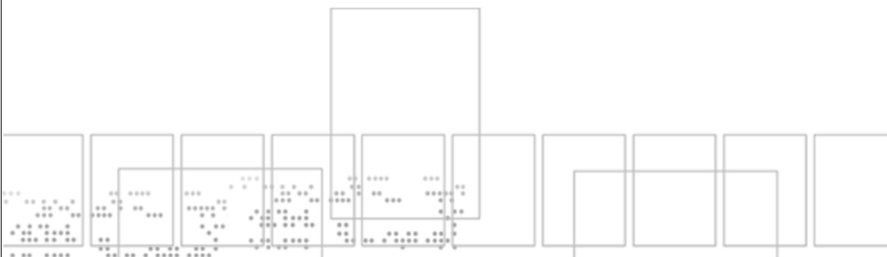
3. Click "New" button.



4. Click "Capture".



5. Video will begin playing.





## Playing Movie Clips using QuickTime Player 6

(Turn on the camera and connect with USB cable ,the camera will set at "Mass Storage Mode.)

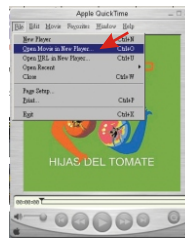


1. Click "QuickTime Player" icon on desktop,

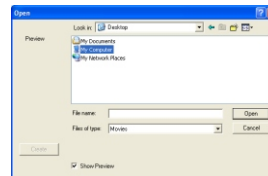
2. "QuickTime Player" introduction screen will appear.



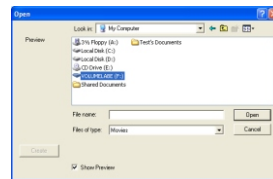
3. Open "File" menu bar and Select "Open Movie in New Player".



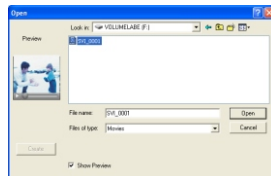
4. Select "DeskTop" and Click "My Computer".



5. Click "VOLUMELABE(F:)"



6. Click "SVI-0001"



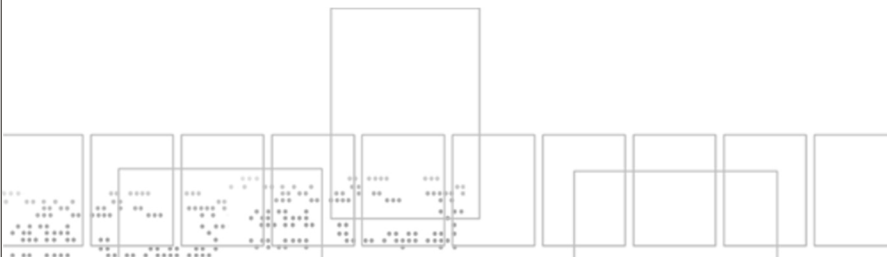
7. Movie will begin playing.





## Specifications

•Image Sensor	CMOS 2048x1536 pixels
•Lens Specification	F2.8, Sensor area 1/2". f=8.4mm, view angle 53.2°
•O/S	Microsoft Windows 98SE/2000/ME/XP
•White Balance	Auto/Manual(day light/cloudy/tungsten/fluorescent)
•Exposure Control	Auto
•Frame Rate-Video Mode	QVGA 320x240 pixels 25-30 fps
•Resolution	2976x2232 pixels 2560x1920 pixels 2048x 1536 pixels 1280x960 pixels
•PC Interface	USB
•Fixed Focus Lens	1m~infinity
•Storage	16MB Flash Memory + Secure Digital Card (card not included)
•Compression	JPEG ; MJPEG
•Display	1.5" Color TFT LCD
•Zoom	4X Digital Zoom
•Movie Clip	QVGA 320x240 pixels up to 110 seconds. @27fps
•Video Output	NTSC or PAL
•Power Source	AAA1.5V x 2(not included)
•Dimensions	90mm x 63mm x 21mm



## Free Manuals Download Website

<http://myh66.com>

<http://usermanuals.us>

<http://www.somanuals.com>

<http://www.4manuals.cc>

<http://www.manual-lib.com>

<http://www.404manual.com>

<http://www.luxmanual.com>

<http://aubethermostatmanual.com>

Golf course search by state

<http://golfingnear.com>

Email search by domain

<http://emailbydomain.com>

Auto manuals search

<http://auto.somanuals.com>

TV manuals search

<http://tv.somanuals.com>