



# TWO-WAY RADIO MODEL PR210VP



User's Guide

## Making Life Easier And Safer

Staying in touch with your family and friends is convenient and easy when using your microTALK® radio. Some of the many uses you will discover include:

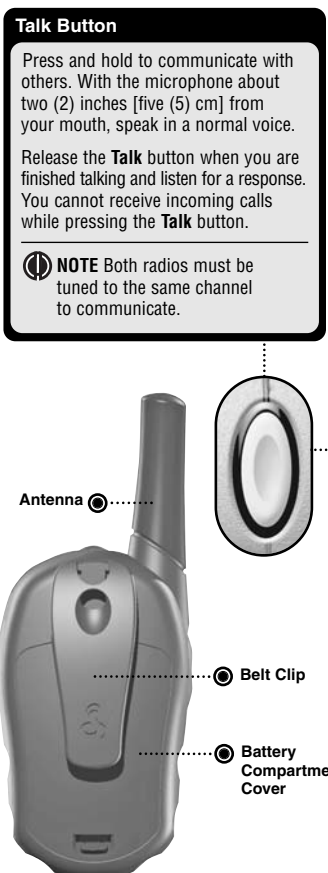
Communicating with others while hiking, biking, and working; keeping track of family and friends at a crowded public event; checking with travel companions in another car; talking with neighbors; arranging meeting spots with others while shopping at the mall.

### Talk Button

Press and hold to communicate with others. With the microphone about two (2) inches [five (5) cm] from your mouth, speak in a normal voice.

Release the Talk button when you are finished talking and listen for a response. You cannot receive incoming calls while pressing the Talk button.

**NOTE** Both radios must be tuned to the same channel to communicate.



Antenna

Belt Clip

Battery Compartment Cover

## Customer Assistance

In this user's guide, you should find all the information you need to operate your microTALK® radio. If you require further assistance after reading this guide, Cobra Electronics offers the following customer assistance services:

### For Assistance In The U.S.A.

**Automated Help Desk** English only. 24 hours a day, 7 days a week 773-889-3087 (phone).

**Customer Assistance Operators** English and Spanish. 8:00 a.m. to 6:00 p.m. Central Time, Monday through Friday (except holidays) 773-889-3087 (phone).

**Questions** English and Spanish. Faxes can be received at 773-622-2269 (fax).

### Technical Assistance

English only. [www.cobra.com](http://www.cobra.com) (on-line: Frequently Asked Questions). English and Spanish. [productinfo@cobra.com](mailto:productinfo@cobra.com) (e-mail).

### For Assistance Outside The U.S.A. Contact Your Local Dealer

Combination Speaker/Microphone Charge Jack

LCD Display

While in **Standby** mode or when selecting a channel, shows current channel (1 through 22). When adjusting the volume, shows current level (1 through 8).

Battery Low Icon Blinks when battery power level is low.

Your microTALK® radio has a unique circuit designed to extend battery life. If there are no transmissions within ten (10) seconds, the radio will automatically switch to **Battery Save** mode. This will not affect the radio's ability to receive incoming transmissions.

Channel Numbers

Transmit Icon

Visible when transmitting a message.

Receive Icon

Visible when receiving a message.

Channel/Volume Indicator

"CH" is visible when in **Standby** mode or when selecting a channel.

"LE" is visible when adjusting volume.



Maximum range may vary and is based on unobstructed line-of-sight communication under ideal conditions.

### Mode/Power Button

Press and hold to turn the radio **On** or **Off**.

Press and release to enter mode function to change channels.

The channel numbers will blink when that mode is selected. Use the **Up/Down** buttons to select a channel.

### Up/Down Buttons

Press and release to adjust the volume.

While in mode function, press and release to change channels.

**Call Button**  
Press and release to alert others that you are calling. This tone is used only to establish voice communications.

### Batteries and Charger

#### Remove Belt Clip



#### To Install or Replace Batteries:

1. Remove belt clip by releasing belt clip latch and sliding clip up.
2. Pull up on the battery door latch to remove the battery compartment cover.
3. Insert the supplied three (3) AAA rechargeable batteries (also works with non-rechargeable alkaline batteries). Position batteries according to polarity markings.
4. Replace battery compartment cover and belt clip.

#### Pull Latch Up



#### Insert Batteries



#### Radio Charger Jack



#### To Charge Batteries in Radio:

1. Check to see that the batteries have been inserted properly. See above for battery installation instructions.
2. Insert round connector of wall charger into the charge jack located at the top of the radio. The wall charger has two round connectors which enables you to charge either one or two radios at a time.
3. Plug the wall charger into electrical outlet.

It normally takes 15 hours to fully recharge batteries. It is not recommended to recharge batteries more than 24 hours. Estimated operation time on a full charge is 8 hours.

Use only the supplied rechargeable batteries and wall charger for recharging your Cobra microTALK® radio. Non-rechargeable alkaline batteries can also be used.

### Trademark Acknowledgement

Cobra®, microTALK®, Nothing Comes Close to a Cobra® and the snake design are registered trademarks of Cobra Electronics Corporation, U.S.A. Cobra Electronics Corporation™ is a trademark of Cobra Electronics Corporation, U.S.A.

### IMPORTANT NOTICE: FCC LICENSE REQUIRED

This two-way radio operates on GMRS (General Mobile Radio Service) frequencies which require an FCC (Federal Communications Commission) license. A user must be licensed prior to operating on Channels 1 through 7 or 15 through 22, which comprise the GMRS channels of this radio, which comprise the GMRS channels of this radio. Serious penalties could result for unlicensed use of GMRS channels, in violation of FCC rules. Operation of this radio is subject to additional rules specified in 47 C.F.R. Part 95.

Licensed users will be issued a call sign by the FCC, which should be used for station identification when operating this radio. GMRS users should also cooperate by engaging in permissible transmissions only, avoiding channel interference with other GMRS users, and being prudent with the length of their transmission time.

For licensing information and application forms, please call the FCC Hotline at 800-418-FORM. Request form #159 and form #605. Questions regarding the license application should be directed to the FCC at 888-CALL-FCC. Additional information is available on the FCC's website at [www.fcc.gov](http://www.fcc.gov).

### Safety Information For microTALK® Radios

This wireless handheld portable transceiver contains a low power transmitter. When the Talk button is pushed, it sends out radio frequency (RF) signals. The device is authorized to operate at a duty factor not to exceed 50%. In August 1996, the Federal Communications Commissions (FCC) adopted RF exposure guidelines with safety levels for handheld wireless devices.

#### Important:

**FCC RF Exposure Requirements:** For body-worn operation, this radio has been tested and meets the FCC RF exposure guidelines when used with Cobra accessories supplied or designated for this product. Use of other accessories may not ensure compliance with FCC RF exposure guidelines. Use only the supplied antenna. Unauthorized antennas, modifications, or attachments could damage the transmitter and may violate FCC regulations.

#### Normal Position:

Hold the transmitter approximately two (2) inches from your face and speak in a normal voice, with the antenna pointed up and away.

**NOTE** This device complies with part 15 of the FCC Rules. Operation is subject to the following two (2) conditions: (1) This device may not cause harmful interference, and (2) this device must accept any interference received, including interference that may cause undesired operation.

FCC Warnings: Replacement or substitution of transistors, regular diodes or other parts of a unique nature, with parts other than those recommended by Cobra may cause a violation of the technical regulations of part 95 of the FCC rules, or violation of type acceptance requirements of part 2 of the rules.

### Product Service Questions

If you have any questions about operation or installing your new Cobra product, or if you are missing parts...

**Please call Cobra first! DO NOT RETURN THIS PRODUCT TO THE STORE! See customer assistance above.**

#### For Products Purchased In The U.S.A.

If your product should require factory service, please call Cobra first before sending your radio, charger or battery pack(s). This will ensure the fastest turn-around time on your repair. You may be asked to send your products to the Cobra factory. It will be necessary to furnish the following to have the product serviced and returned: 1) For warranty repair include some form of proof-of-purchase, such as a mechanical reproduction or carbon of a sales receipt. If you send the original receipt, it cannot be returned. 2) Send the entire product. 3) Enclose a description of what is happening with the product. Include a typed or clearly printed name and address of where the product is to be returned. 4) Pack product securely to prevent damage in transit. If possible, use the original packing material. 5) Ship prepaid and insured by way of a traceable carrier such as United Parcel Service (UPS) or First Class Mail to avoid loss in transit to:

Cobra Factory Service  
Cobra Electronics Corporation  
6500 West Cortland Street  
Chicago, Illinois 60707 U.S.A.

6) If the product is in warranty, upon receipt of your product it will either be repaired or exchanged depending on the model.

Please allow approximately three (3) to four (4) weeks before contacting Cobra for status. If the product is out of warranty, a letter will automatically be sent informing you of the repair charge or replacement charge. If you have any questions, please call 773-889-3087 for assistance.

#### For Products Purchased Outside The U.S.A.

Please contact your local dealer for product service information.

### Limited 1-Year Warranty On Radio(s) And Charger

#### For Products Purchased In The U.S.A.

Cobra Electronics Corporation warrants that its Cobra GMRS radios and charger, and the component parts thereof, will be free of defects in workmanship and materials for a period of one year from the date of first consumer purchase. This warranty may be enforced by the first consumer purchaser, provided that the product is utilized within the U.S.A.

Cobra will, without charge, repair or replace, at its option, defective GMRS radios, chargers, products or component parts upon delivery to the Cobra Factory Service department, accompanied by proof of the date of first consumer purchase, such as a duplicated copy of a sales receipt.

You must pay any initial shipping charges required to ship the product for warranty service, but the return charges will be at Cobra's expense, if the product is repaired or replaced under warranty. This warranty gives you specific legal rights, and you may also have other rights which may vary from state to state.

#### Exclusions: This limited warranty does not apply:

1) To any product damaged by accident; 2) In the event of misuse or abuse of the product or as a result of unauthorized alterations or repairs; 3) If the serial number has been altered, defaced, or removed; 4) If the owner of the product resides outside the U.S.A.

All implied warranties, including warranties of merchantability and fitness for a particular purpose are limited in duration to the length of this warranty. Cobra shall not be liable for any incidental, consequential or other damages, including, without limitation, damages resulting from loss of use or cost of installation.

Some states do not allow limitations on how long an implied warranty lasts and/or do not allow the exclusion or limitation of incidental or consequential damages, so the above limitations may not apply to you.

#### For Products Purchased Outside The U.S.A.

Please contact your local dealer for warranty information.

#### 90-Day Warranty On Rechargeable Batteries

For Products Purchased In The U.S.A. And Canada

### The Cobra® line of quality products includes:

CB Radios • microTALK® Radios • Radar/Laser Detectors • Safety Alert® Traffic Warning Systems  
HighGear® Accessories • CobraMarine® VHF Radios • Power Inverters • Accessories

## Free Manuals Download Website

<http://myh66.com>

<http://usermanuals.us>

<http://www.somanuals.com>

<http://www.4manuals.cc>

<http://www.manual-lib.com>

<http://www.404manual.com>

<http://www.luxmanual.com>

<http://aubethermostatmanual.com>

Golf course search by state

<http://golfingnear.com>

Email search by domain

<http://emailbydomain.com>

Auto manuals search

<http://auto.somanuals.com>

TV manuals search

<http://tv.somanuals.com>