

Before you begin

- Read all instructions before set up.
- Select a level site clear of rocks, branches, and other hard or sharp objects, to install your screenhouse.
- ⚠ **WARNING: Keep clear of overhead power lines.**
- Do not set up your screenhouse under trees because of potential lightning strikes or falling tree limbs in inclement weather.
- Secure with **all** stakes and guylines provided to prevent property damage or personal injury.
- For best results in windy conditions, position narrow end of screenhouse into the wind.
- Do not drop screenhouse.
- Do not bounce screenhouse bag on its end to remove screenhouse, as these actions may damage the frame.
- **THIS RECREATIONAL PRODUCT REQUIRES A MINIMUM OF TWO PEOPLE TO ASSEMBLE.**
- Under no circumstances should this product be used to cover automobiles, marine products or similar items.

CAUTION: Avoid pinch points when opening and closing the screenhouse frame.

Description	Repair Kit	Description	Repair Kit
Plastic Clip 16 mm	5010000845	Plastic Corner Joint	5010000853
Plastic Clip 20 mm	5010000846	Fabric Joint Cover	5010000855
Fabric Repair Kit	5010000852		

1 Extend the Screenhouse Frame

- Stand the screenhouse upright with the hub assembly at the top. (Fig. 1)
- Unfold the arms of the screenhouse downward until they lay flat on the ground. (Fig. 2)
- Fully extend the arms of the screenhouse away from the center hub till the telescoping pole sections are locked in place. (Fig. 3 and Fig. 3A)

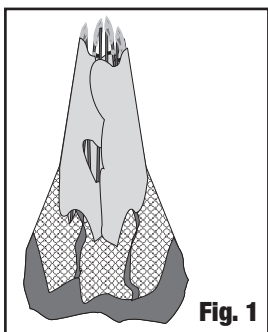


Fig. 1

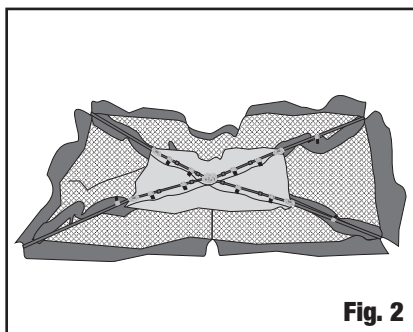


Fig. 2

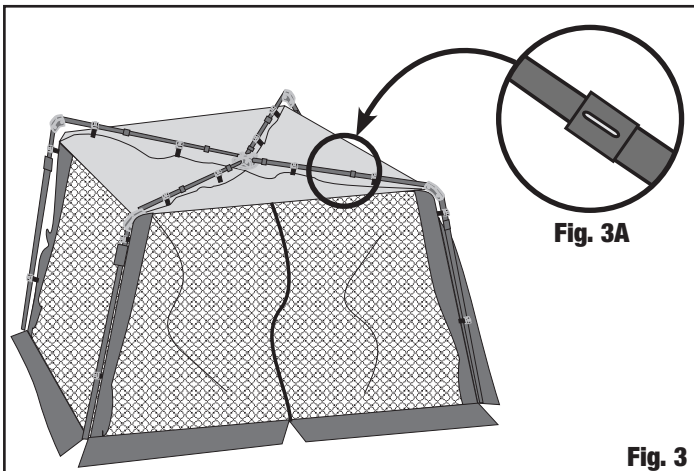


Fig. 3A

Fig. 3

2 Raise the Screenhouse

- Extend each of the telescoping leg poles until they snap into place. The screenhouse will raise as the leg poles are extended. (Fig. 4)

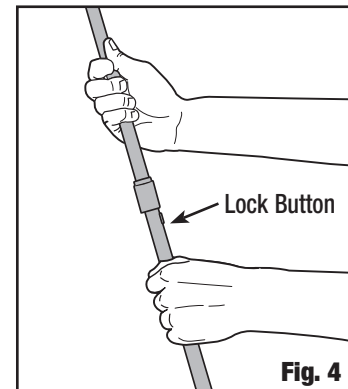


Fig. 4

3 Stake the Screenhouse

- Secure screenhouse by driving stakes through the webbing loops sewn to the screenhouse base. (Fig. 5 and Fig. 6)
- Keep the floor taut.

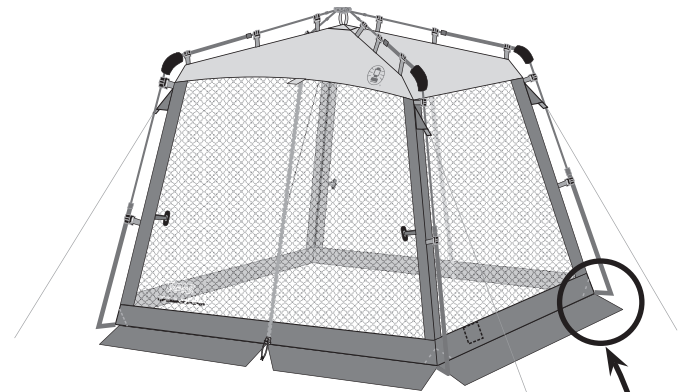


Fig. 5

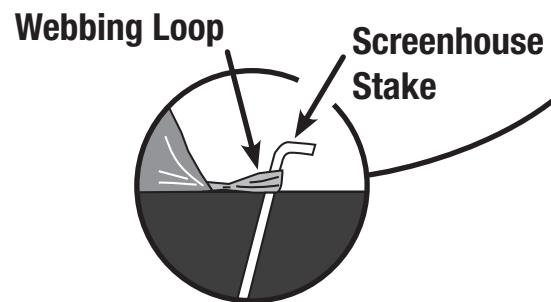


Fig. 6

(continued on other side)

4 Secure the Guylines

- Attach and stake out guylines. (Fig. 7 and Fig. 8)
- Adjust sliders to make guylines tight.

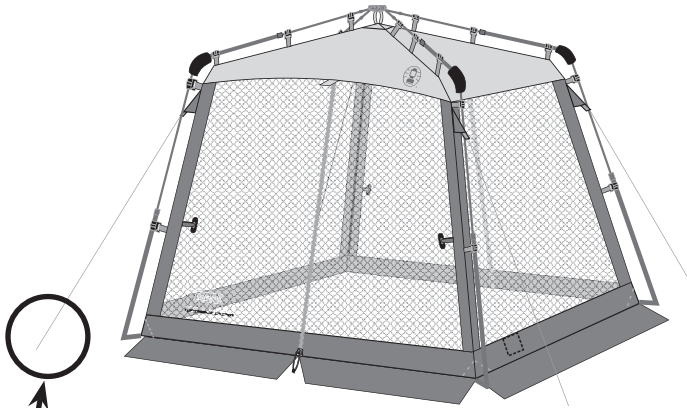


Fig. 7

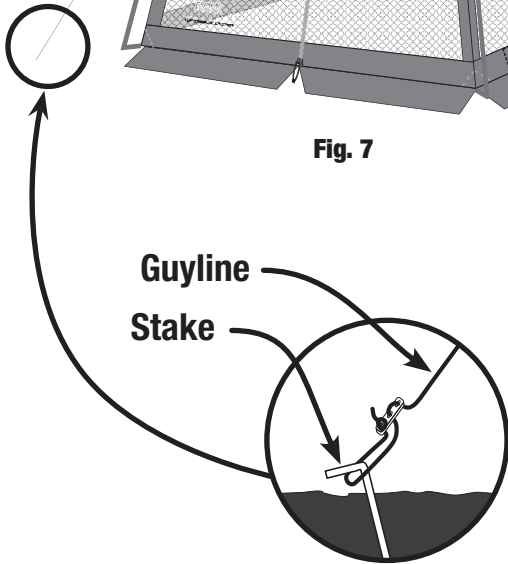


Fig. 8

Things You Should Know:

- Under certain conditions (cold weather, high humidity, etc.) condensation will form on the inside of your screenhouse. Condensation is caused by water vapor from your breath, perspiration, or any wet clothing inside the screenhouse. It is **NOT LEAKAGE** through the screenhouse fabric.
- Tree limbs, tree sap, bird droppings, or moisture steadily dripping off tree limbs can cause damage to the screenhouse fabric and its coating resulting in leaks or loss of flame-resistant properties.
- Never store screenhouse, even for a short period of time, without drying it thoroughly and brushing off caked dirt. Do not pack stakes inside your screenhouse. Use a separate storage bag.
- Stakes should be removed by pulling on the stake itself. **NEVER PULL ON THE SCREENHOUSE TO REMOVE STAKES AS THIS COULD RESULT IN PROPERTY DAMAGE OR PERSONAL INJURY.**
- Do not leave your screenhouse set-up for weeks at a time. Be aware that exposure to ultraviolet rays from the sun can seriously damage material and/or cause it to become discolored.
- This product is not intended to be used during heavy rain, wind, hail, snow or other inclement weather. Excess water build-up can cause the frame system to become unstable, and possibly collapse, causing injury.
- The screenhouse should be taken down and placed in storage during windy conditions to avoid damage to product or personal injury.
- **DO NOT** use gas or flame sources under or near this product.

5 Disassembly

To take down the screenhouse, follow the previous steps and illustrations in the reverse order:

- Remove guylines and stakes. (Fig. 7 and 8)
- Lower the frame one leg pole at a time by pushing the lock buttons and collapsing the telescoping leg poles. (Fig. 4)
- Retract the arms of the screenhouse toward the center hub. (Fig. 3)
- Collapse the screenhouse by folding the arms upward until the screenhouse stands upright with the hub assembly at the top. (Fig. 1)
- Place the screenhouse in the carry bag for storage.

TIP: After collapsing the screenhouse, place it on its side, then roll it multiple times with pressure to reduce its size. This will allow the unit to slip into the carry bag.

6 To Store

1. All stakes must be placed in the storage bag to prevent damage to the fabric items placed in the carry bag.
2. Make sure all components are clean and dry before placing in carry bag.
3. Store in a clean, dry area.

⚠ WARNING: KEEP ALL FLAME AND HEAT SOURCES AWAY FROM THIS TENT FABRIC.

This tent meets the flammability requirements of CPAI-84. The fabric may burn if left in continuous contact with any flame source. The application of any foreign substance to the tent fabric may render the flame-resistant properties ineffective.



The Coleman Company, Inc. • 3600 North Hydraulic • Wichita, Kansas 67219 U.S.A.
1-800-835-3278 • www.coleman.com

MADE IN CHINA

© 2011 The Coleman Company, Inc. All rights reserved.
Coleman®, Coleman®, and  are registered trademarks of
The Coleman Company, Inc.

4010010822 (ECN20016987-02)

Free Manuals Download Website

<http://myh66.com>

<http://usermanuals.us>

<http://www.somanuals.com>

<http://www.4manuals.cc>

<http://www.manual-lib.com>

<http://www.404manual.com>

<http://www.luxmanual.com>

<http://aubethermostatmanual.com>

Golf course search by state

<http://golfingnear.com>

Email search by domain

<http://emailbydomain.com>

Auto manuals search

<http://auto.somanuals.com>

TV manuals search

<http://tv.somanuals.com>