

IMPORTANT SAFETY INSTRUCTIONS

When using this product, especially when children are present, basic safety precautions should be followed, including the following:

READ ALL INSTRUCTIONS BEFORE USING WARNING

1. Never operate the unit if it is not working properly, if it has been damaged or immersed in water.
2. **THIS IS NOT A TOY.** Close adult supervision is necessary when this product is used by, on or near children or people with certain disabilities.
3. **DO NOT** use these jewels on children 5 years of age or younger, as small objects may present a choking hazard.
4. Use only new batteries. Never mix old and new batteries.
5. Use this product only for its intended use as described in this manual.
6. This product is designed for jewelling hair only.
7. **DO NOT** use this product for any other purpose.
8. Do not use any attachments other than those supplied by Conair.
9. Use this appliance only for its intended use as described within this instruction book.
10. This appliance is not intended for commercial use.
11. Do not use outdoors or operate where aerosol (spray) products are being used or where oxygen is being administered.
12. Never drop or insert any object into an opening.

SAVE THESE INSTRUCTIONS

THANK YOU FOR BUYING
CONAIR® QUICK GEMS™ JEWELER

Everything you need to create a bedazzling new look in seconds is contained in this kit. Mix and match jewel colors, shapes, and sizes for your own individual style. The bling's the thing!

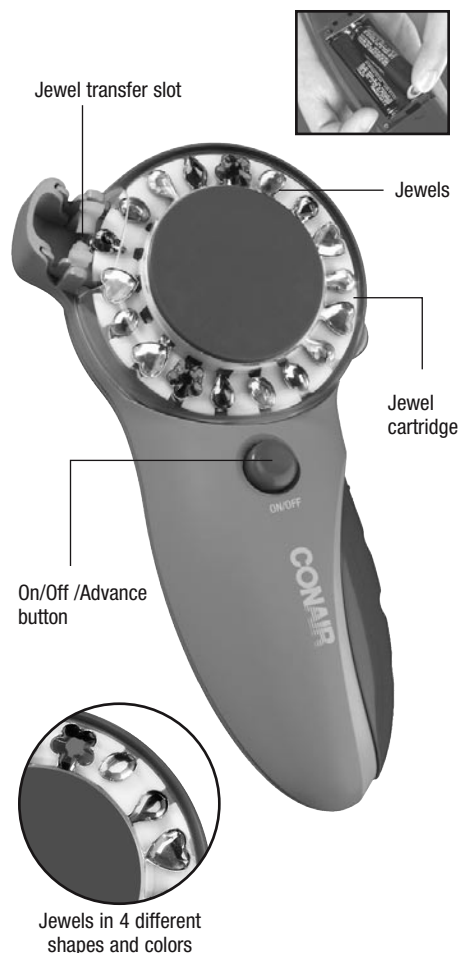
Quick Gems™ works on any texture of long or medium length hair. It's quick and easy to create any look you want – just a touch of sparkle on the tips of your hair, all-out glam with strings of jewels, or a mix of color and shape wherever you want it! Won't tangle or pull hair.

Before you begin, insert 2 AAA batteries (not included) in the back of the tool. Then, follow the simple steps to bejewel your hair!

HOW TO LOAD THE BATTERIES

1. Remove screw and slide door to open battery compartment.
2. Insert the 2 AAA batteries into the jewelling tool.
3. Once batteries are in place, slide battery cover back on and fasten screw. In order for the Quick Gems™ unit to work, be sure to insert the batteries in the correct position as shown.

GET TO KNOW YOUR CONAIR® QUICK GEMS™



WARNING: Do not mix old and new batteries. Do not mix alkaline, standard (carbon-zinc), or rechargeable (nickel cadmium) batteries.

GETTING STARTED

Quick Gems™ styling tool is already loaded with 18 decorative jewels in 4 different shapes and 2 different sizes; 6 extra reusable gems are included. The unit runs on 2 AAA batteries.

HOW TO USE YOUR CONAIR® QUICK GEMS™

1. Before jewelling, make sure hair is dry and free of styling product to make certain jewels flow easily when they are released onto a strand of hair. Styling products can leave a residue on your Quick Gems™ which could affect its performance.
2. Separate out approximately ¼" thin strand of hair with a sectioning comb and comb it through to smooth the strand.
3. Insert hair strand into the jewel transfer slot. Hold the end of the hair strand to ensure the jewel is securely applied.
4. Push the On button to transfer the jewel onto the hair strand. Continue holding the On button until you hear the jewel snap into place. Do not move the Quick Gems™ unit until jewel is secured onto hair strand.

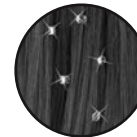
5. Release the On button and the jewel cartridge will automatically move to the next jewel. You can then move the unit up or down the hair strand or section out a new strand.

6. Jewels can be re-used. Simply remove from hair and reload into cartridge. (See instructions "How to remove the jewels from your hair" and "How to reload the jewels into the cartridge.")

CREATE DIFFERENT LOOKS USING CONAIR® QUICK GEMS™

The Conair® Quick Gems™ is a very versatile tool and can be used to accent almost any hair style.

1. A single full strand of jewels on one strip of hair from root to tip.
2. Jewels on each side of your face.
3. Do a couple of strands halfway up.
4. Scatter jewels throughout the hair to give a sparkling look all over.



HOW TO REMOVE THE JEWELS FROM YOUR HAIR

1. Grasp both sides of the jewel.
2. Gently pull the two sides of the jewel apart, releasing spring tension slowly.
3. Slide the jewel down and out of the strands of hair.
4. Be careful not to stretch the spring in between the jewels.



CHOOSING SPECIFIC JEWELS

If you want to apply only one or two specific jewels to your hair, you can rotate the cartridge clockwise until the desired jewel is directly under the hair slot. Follow the directions on how to use your Conair® Quick Gems™



USER MAINTENANCE

Your Quick Gems™ Jeweler is virtually maintenance-free. No lubrication is needed. If cleaning becomes necessary, wipe exterior with a damp cloth. If any abnormal condition occurs, return it to an authorized service representative only. No repairs should be attempted by the consumer.

HOW TO RELOAD THE JEWELS INTO THE CARTRIDGE

1. Open the protective cover over the jewel cartridge.
2. Slide each jewel into each empty slot on the cartridge.
3. Close the protective cover.



NOTE: Jewels supplied in this unit are specifically designed for use with this product. Do not use jewels other than those supplied, as they can cause the Quick Gems™ unit to jam.



Replacement jewels (Model HJ3RP) can be ordered at 1-800-3-CONAIR or at www.conair.com.

LIMITED ONE-YEAR WARRANTY

Conair will repair or replace (at our option) your unit free of charge for 12 months from the date of purchase if the appliance is defective in workmanship or materials.

To obtain service under this warranty, return the defective product to the service center listed below, together with your purchase receipt and \$3.00 for postage and handling. California residents need only provide proof of purchase and should call 1-800-3-CONAIR for shipping instructions. In the absence of a purchase receipt, the warranty period shall be 12 months from the date of manufacture.

ANY IMPLIED WARRANTIES, OBLIGATIONS, OR LIABILITIES, INCLUDING BUT NOT LIMITED TO THE IMPLIED WARRANTY OF MERCHANTABILITY AND FITNESS FOR A PARTICULAR PURPOSE, SHALL BE LIMITED IN DURATION TO THE 12-MONTH DURATION OF THIS WRITTEN, LIMITED WARRANTY. Some states do not allow limitations on how long an implied warranty lasts, so the above limitations may not apply to you.

IN NO EVENT SHALL CONAIR BE LIABLE FOR ANY SPECIAL, INCIDENTAL, OR CONSEQUENTIAL DAMAGES FOR BREACH OF THIS OR ANY OTHER WARRANTY, EXPRESS OR IMPLIED, WHATSOEVER. Some states do not allow the exclusion or limitation of special, incidental, or consequential damages, so the above limitation may not apply to you.

This warranty gives you specific legal rights, and you may also have other rights, which vary from state to state.

SERVICE CENTER:

CONAIR CORPORATION
Service Department
7475 N. Glen Harbor Blvd.
Glendale, AZ 85307

©2007 CONAIR CORPORATION
7475 N. Glen Harbor Blvd., Glendale, AZ 85307
Patent Pending.
www.conair.com

07NP211

IB-7839

Quick gems™



Instruction & Styling Guide
Model HJ3BC

CONAIR®

Bejewel your Hair Automatically

Free Manuals Download Website

<http://myh66.com>

<http://usermanuals.us>

<http://www.somanuals.com>

<http://www.4manuals.cc>

<http://www.manual-lib.com>

<http://www.404manual.com>

<http://www.luxmanual.com>

<http://aubethermostatmanual.com>

Golf course search by state

<http://golfingnear.com>

Email search by domain

<http://emailbydomain.com>

Auto manuals search

<http://auto.somanuals.com>

TV manuals search

<http://tv.somanuals.com>