

# IMPORTANT SAFETY INSTRUCTIONS

When using electrical appliances, especially when children are present, basic safety precautions should always be followed, including the following:

## READ ALL INSTRUCTIONS BEFORE USING. KEEP AWAY FROM WATER

**DANGER** — Any appliance is electrically live even when the switch is off. To reduce the risk of death by electric shock:

1. Always unplug appliance immediately after using.
2. Do not use while bathing.
3. Do not place or store appliance where it can fall or be pulled into a tub or sink.
4. Do not place in, or drop into, water or other liquid.
5. If an appliance falls into water, unplug it immediately. Do not reach into the water.

**WARNING** — To reduce the risk of burns, electrocution, fire, or injury to persons:

1. **This appliance should never be left unattended when plugged in.**
2. **Do not pull, twist, or wrap line cord around appliance.**
3. This appliance should not be used by, or near children or individuals with certain disabilities.
4. Use this appliance only for its intended use, as described in this manual. Do not use attachments not recommended by the manufacturer.

5. **Never operate this appliance if it has a damaged cord or plug, if it is not working properly or if it has been dropped or damaged, or dropped into water. Return the appliance to an authorized service center for examination and repair.**

6. Keep the cord away from heated surfaces.
7. Never use while sleeping.
8. Never drop or insert any object into any opening or hose.
9. Do not use outdoors or operate where aerosol (spray) products are being used or where oxygen is being administered.
10. Unit is hot when in use. Do not let eyes or bare skin touch heated surfaces.
11. **Do not place the heated unit directly on any surface or on the appliance cord while it is hot or plugged in.**
12. Never block the air openings of the appliance or place on a soft surface, such as a bed, couch, or towel, where the air openings may be blocked. Keep the air openings free of lint, hair, and the like. Unplug before storing.
13. Do not use an extension cord with this appliance.
14. Do not touch hot surfaces of the appliance. Use handles or knobs.
15. Before plugging in read the information about dual voltage contained in the instruction section of this manual.
16. Do not attempt to touch the housing of your appliance near the straightening plates as it is hot when in use.

# SAVE THESE INSTRUCTIONS OPERATING INSTRUCTIONS

This straightening iron is intended for household use. This unit is designed to operate at 120/240 volts AC. Use on Alternating Current (50/60 hertz) only.

This appliance has a polarized plug (one blade is wider than the other). As a safety feature, this plug will fit in a polarized outlet only one way. If the plug does not fit fully in the outlet, reverse the plug. If it still does not fit, contact a qualified electrician. Do not attempt to defeat this safety feature.

## DUAL VOLTAGE

This straightening iron will automatically adjust to the proper voltage. Use an adapter plug with correct configuration, prior to use in outlet.

## TO STRAIGHTEN HAIR

Hair should be clean and completely dried before using the straightening iron. Plug the iron into an electrical outlet. Turn on unit. The power indicator light should become illuminated. Allow unit to heat up for several minutes.

**WARNING: The straightening iron's plates will get very hot within a few seconds and should not be placed in contact with the skin after the straightening iron has been turned on.**

## GETTING STARTED

The straightening iron's 25 temperature settings and Instant Heat technology combine to provide styling versatility for all hair textures. If you have fine hair, a low temperature will provide the best results. If you have thick, wavy or hard-to-straighten hair, keep the heat setting high. You can vary the straightening iron's temperature according to your particular need!

## STRAIGHTENING BASICS

1. Plug the straightening iron cord into any household outlet (120/240V, red light to go on). Press ON button. The iron will heat up very quickly. The green indicator light will stop blinking and remain on when the iron is ready to use. To turn off, press OFF button (green light will go off). Never leave your straightening iron on and unattended. However, should you fail to turn the unit off, it will shut itself off automatically within 60 minutes.
2. Start with a hair section that is 2" wide and no more than 1/2" thick. Open the iron and place a hair section between the two hot plates, close to the scalp. Trap hair between the plates by firmly squeezing the handles together. While maintaining the tension, slowly pull the unit down along the hair section toward the end of hair. For best

results, use a light styling lotion before blow-drying hair. At the end of hair section, release the pressure on the handle and allow the hair section to slide out. Repeat process on additional sections of hair until you achieve the hair style you desire. It may be necessary to repeat process on certain areas, depending on the texture of your hair.

Some experience is necessary when learning to use this straightening iron. After using iron several times, you will learn the ideal way to straighten and style your hair easily.

## STYLING WITH THE EASY-GLIDE CERAMIC-COATED PLATES

The plates of your new straightening iron have an Easy-Glide ceramic-coated surface, the newest technology.

Hair glides easily over the surface of the plates as you're straightening. The ceramic-coated surface also helps smooth down flyaways and frizzies. As you smooth each strand, heat is evenly distributed so that the style you create has a salon-perfect, silky smooth, shining finish. Hair slips right off the plates after it's straightened, and the ceramic surface is easy to clean.

The new ceramic technology is a pleasure to work with because it makes styling your hair

easier and the results more professional.

## USING INSTANT HEAT, THE 25 VARIABLE TEMPERATURE SETTINGS AND UNIFORM HEAT RECOVERY SYSTEM

This straightening iron features Conair's Instant Heat technology.

Within this Instant Heat technology there are 25 variable temperature settings for every type of hair, from the finest to the curliest and most re-

## Temperature Setting Guide

Temp. Setting	Hair Type
Low 1-5	Delicate, thin, easy-to-straighten hair
Medium 6-11	Average to thick or treated hair
Med-High 12-20	Thick or wavy hair
High 21-25	Hard-to-straighten hair

stant. Select the temperature range that's suitable for your hair type to help you create the look you want.

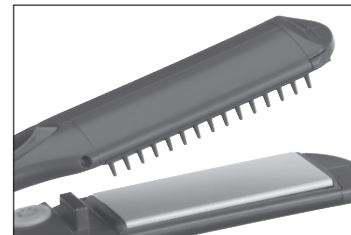
And that's not all. Conair's professional salon standards of engineering provide you with a Uniform Heat Recovery System that maintains the straightening iron at a constant temperature.

There is a constant surge of power to ensure that heat is continuously delivered for optimal styling results, unlike other units which lose heat during use. This provides consistent styling power so

that every strand of your hair is set with the same level of heat and comes out the same way for a perfect finish.

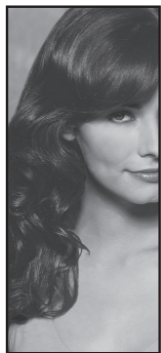
## REMOVABLE COMB

Your straightening iron includes a removable comb attachment. The hard bristle comb will help to provide tension and guide your hair as you use the straightening iron. To remove or attach the comb, turn unit off and allow unit to cool. Hold unit firmly with one hand; with your other hand, slide comb away from the iron to detach it. When attaching the comb, align it with the slot on the



Removable Comb Attachment

**URNS CURLS INTO  
SMOOTH HAIR IN SECONDS**



**BEFORE**



**AFTER**

**GET TO KNOW YOUR  
STRAIGHTENING IRON**



side of the iron and slide comb into position. Make sure the comb securely locks into position.

**USER MAINTENANCE**

Your straightening iron is virtually maintenance-free. No lubrication is needed. Keep all vents and openings clear of dirt and dust. If cleaning becomes necessary, disconnect the unit from the power source, allow to cool, and wipe exterior with a cloth. If any abnormal condition occurs, unplug the unit, allow it to cool, and return it for repair to an authorized service representative only. No repairs should be attempted by the consumer.

**CAUTION**

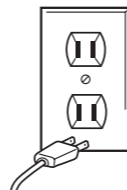
NEVER allow the power supply cord to be pulled, twisted, or severely bent. Never wrap the cord tightly around the appliance. Damage will occur at the high flex point of entry into the appliance, causing it to rupture and short circuit. Inspect the cord frequently for damage. Stop use immediately if damage is visible or if unit stops or operates intermittently.

**STORAGE**

When not in use, your appliance is easy to store. Allow appliance to cool, then simply put back in the box and store out of reach of children in a

**WARNING:  
IF YOU THINK THE  
POWER IS OFF WHEN  
THE SWITCH IS OFF  
YOU'RE WRONG.**

**KEEP AWAY FROM WATER**



Everyone knows that electricity and water are a dangerous combination. But did you know that an electric appliance is still electrically live even if the switch is off? If the plug is in, the power is on. So when you are not using your appliances, keep them unplugged.

**ALWAYS UNPLUG  
SMALL APPLIANCES**

safe, dry location. Do not jerk or strain cord at plug connections.

**LIMITED TWO YEAR WARRANTY**

Conair will repair or replace (at our option) your unit free of charge for 24 months from the date of purchase if the appliance is defective in workmanship or materials.

To obtain service under this warranty, return the defective product to the service center listed below, together with your purchase receipt and \$3.00 for postage and handling. California residents need only provide proof of purchase and should call 1-800-3-CONAIR for shipping instructions. In the absence of a purchase receipt, the warranty period shall be 24 months from the date of manufacture.

**ANY IMPLIED WARRANTIES, OBLIGATIONS, OR LIABILITIES, INCLUDING BUT NOT LIMITED TO THE IMPLIED WARRANTY OF MERCHANTABILITY AND FITNESS FOR A PARTICULAR PURPOSE, SHALL BE LIMITED IN DURATION TO THE 24 MONTH DURATION OF THIS WRITTEN, LIMITED WARRANTY.** Some states do not allow limitations on how long an implied warranty lasts, so the above limitations may not apply to you.

**IN NO EVENT SHALL CONAIR BE LIABLE FOR ANY SPECIAL, INCIDENTAL, OR CONSEQUENTIAL DAMAGES FOR BREACH OF THIS OR ANY OTHER WARRANTY, EXPRESS OR IMPLIED, WHATSOEVER.**

This warranty gives you specific legal rights, and you may also have other rights, which vary from state to state.

**Haircare  
Hotline**  
Call: 1-800-3-CONAIR  
Or visit us on the web at:  
<http://www.conair.com>  
For info on any Conair product

**SERVICE CENTER**  
CONAIR CORPORATION  
Service Department  
7475 N. Glen Harbor Blvd  
Glendale, AZ 85307  
©2006 CONAIR CORPORATION

06PC2056

IB-6562

**professional  
ceramic  
STRAIGHTENING IRON**



**Instruction  
& Styling  
Guide**

For your safety and continued enjoyment of this product, always read the instruction book carefully before using.

**CONAIR®**

Model CS25

## Free Manuals Download Website

<http://myh66.com>

<http://usermanuals.us>

<http://www.somanuals.com>

<http://www.4manuals.cc>

<http://www.manual-lib.com>

<http://www.404manual.com>

<http://www.luxmanual.com>

<http://aubethermostatmanual.com>

Golf course search by state

<http://golfingnear.com>

Email search by domain

<http://emailbydomain.com>

Auto manuals search

<http://auto.somanuals.com>

TV manuals search

<http://tv.somanuals.com>