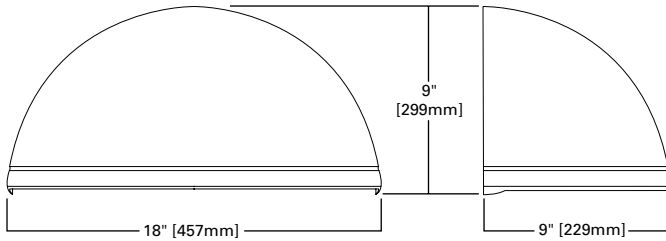


DIMENSIONS

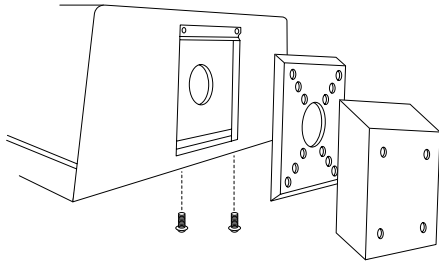


DESCRIPTION

The Credenza wall sconce full cutoff wall luminaire has a traditional style of spherical form with geometrical symmetry and balance that gives a blended form to complement site design. U.L. listed and CSA Certified for wet locations in down mounting applications and damp location in up mounted applications.



HOOK-N-LOCK MOUNTING (Mounting attachment included. J-Box not included)



In downlight applications only.

ZDW CREDENZA WALL SCONCE

5 0 - 1 7 5 W
High Pressure Sodium
Metal Halide
2 6 - 5 2 W
Compact Fluorescent

**FULL CUTOFF
WALL MOUNT LUMINAIRE**

ORDERING INFORMATION

SAMPLE NUMBER: ZDW-150-MH-MT-2S-BK

Product Family	Lamp Wattage	Lamp Type	Voltage ⁵	Distribution	Color	Options & Accessories
ZDW=Credenza Wall Sconce	HID ¹ 50=50W ² 70=70W ³ 100=100W 150=150W 175=175W Compact Fluorescent 26=26W 32=32W 42=42W 52=(2) 26W ⁴	MH=Metal Halide HPS=High Pressure Sodium CF=Compact Fluorescent	120=120V 208=208V 240=240V 277=277V 480=480V MT=Multi-Tap ⁶ TT=Triple-Tap ⁷ DT=Dual-Tap ⁸	2S=Type II	BK=Black BZ=Bronze AP=Grey WH= White DP=Dark Platinum GM=Graphite Metallic	(See Below)

Options⁹

F=Single Fuse (120, 277 or 347V)
FF=Double Fused (208, 240 or 480V)
P=Button Type Photocontrol (Specify Voltage)
TR=Tamper Resistant Screw (Door and Mounting Plate)
L=Lamp Included¹⁰
Q=Quartz Restrike T4 Lamp^{11,12,13,14}
EM=Emergency Quartz Restrike T4 Lamp w/ Time Delay Relay^{11,12,13,14}
EMI40-XXX=CFL Cold Weather Emergency Battery Pack (Must specify 120 or 277V)^{15,16}
CF/EM-XXX=Emergency Battery Pack (Must specify 120 or 277V)^{15,17}
QMR=Quartz Restrike MR16 Lamp^{13,14,18}
EMMR=Emergency Quartz Restrike MR16 Lamp w/ Time Delay Relay^{13,14,18}
EM/SC=Emergency Separate Circuit T4 Lamp^{12,14,19}
EM/SC/MR=Emergency Separate Circuit MR16 Lamp^{18,19}
EM/SC/12V=Emergency Separate Circuit (12V)²⁰

NOTES: 1 All lamps are medium-base. 2 Available only in 120 or 277V and Dual-Tap. 3 Not available in 480V. 4 (2) 26W quad tube lamps only. 5 Product also available in non-US voltages and 50Hz for international markets. Consult factory for availability and ordering information. 6 Multi-Tap ballast is 120/208/240/277V wired 277V. 7 Triple-Tap ballast is 120/277/347V wired 347V. 8 Dual-Tap ballast is 120/277V wired 277V. 9 Add as suffix in the order shown. 10 Lamp is shipped separate from luminaire. Lamp is Cooper designated product based on luminaire requirements. Specified lamps must be ordered as a separate line item. 11 The power might need to cycle and allow HID lamp to cool in warm climates. Available up to 175W HID. 12 For use with T4 double contact DC bayonet base, 100W maximum, 120V halogen lamp by others. 13 Lamps wired to quartz restrike relay. 14 Not available with CFL. 15 Battery will operate up to 42W CFL lamp for 90 minutes. 16 CF lamps only, rated for minimum temperature of 0°F (-18°C), (1) 42W CFL maximum, heater rated for 300W with thermostat control. 17 CF lamps only, rated for minimum temperature of 32°F (0°C), (1) 42W CFL maximum. 18 For use with MR16, GU10 base, 50W maximum, 120V halogen lamp by others. 19 Leads run out back for connection to auxiliary 120V circuit. 20 Supplied with 12V Bi-pin socket for connection to emergency battery pack (supplied by others). For use with MR16, GU5.3 base, 35W maximum, 12V halogen lamp by others. 21 Specifications and dimensions subject to change without notice.

- Housing is a two-piece design of die-cast aluminum
- Gasketed and zinc plated rigid steel mounting attachment fits directly to 4" J-Box or wall with "Hook-N-Lock" mechanism for quick installation
- All optical modules utilizes high performance 95% reflective sheet
- Die-cast door mounted with, 1/8" heat- and impact-resistant clear tempered glass lens, with internal plated steel clips and sealed with EPDM gasketing. Hinged door secured in place via two (2) captive fasteners
- HID luminaires supplied with high power factor ballast with Class H insulation. Fluorescent luminaires feature program start, high efficient multi-voltage 50/60Hz ballast with -18°C (0°F) minimum starting
- Durable polyester powder coat finish
- U.L. listed for wet locations. CSA certified
- Approximate net weight: 18 lbs. (8 kgs.)

Free Manuals Download Website

<http://myh66.com>

<http://usermanuals.us>

<http://www.somanuals.com>

<http://www.4manuals.cc>

<http://www.manual-lib.com>

<http://www.404manual.com>

<http://www.luxmanual.com>

<http://aubethermostatmanual.com>

Golf course search by state

<http://golfingnear.com>

Email search by domain

<http://emailbydomain.com>

Auto manuals search

<http://auto.somanuals.com>

TV manuals search

<http://tv.somanuals.com>