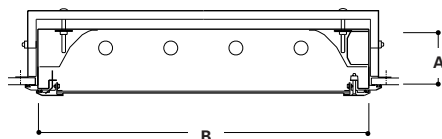
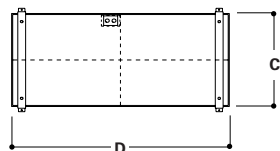


FAIL-SAFE®

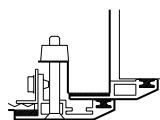
DIMENSIONS



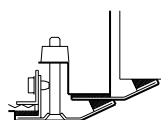
CEILING OPENING



DOOR FRAME



Extruded aluminum mitered door frame and housing trim flange with extruded silicone rubber perimeter gasketing



One piece stainless steel door frame and housing trim flange with extruded closed cell silicone perimeter gasketing

	A	B	C	D
SCF/12	3 7/16"	11 11/16"	12 1/4"	24 1/2"
1' x 2'	(87mm)	(297mm)	(311mm)	(622mm)
SCF/12	3 7/16"	11 11/16"	12 1/4"	48 1/2"
1' x 4'	(87mm)	(297mm)	(311mm)	(1232mm)
SCF/24	3 11/16"	25 1/2"	24 1/4"	24 1/2"
2' x 2'	(94mm)	(648mm)	(616mm)	(622mm)
SCF/24	3 11/16"	25 1/2"	24 1/4"	48 1/2"
2' x 4'	(94mm)	(648mm)	(616mm)	(1232mm)

ORDERING INFORMATION

SAMPLE NUMBER: SCF-12-340-277-1K12-LE3-ALP-GLR

Series SCF=Specification Grade Cleanroom Flange Type	Width 12=12" 24=24"	Voltage 120=120V 277=277V 347=347V UNV=120V through 277V	Lens Type IK12=K-12 Prismatic Acrylic IP12=K-12 Prismatic Polycarbonate KSH25 ¹ =Bat Wing Distribution 93=Prismatic Tempered Glass	Ballast LE3=Energy Saving Ballast Electronic Ballast² EB81=(1) Ballast for use with T8 Lamp EB82=(2) Ballasts for use with T8 Lamp EB21=(1) Ballast for use with T12 Lamp EB22=(2) Ballasts for use with T12 Lamp EBX1=(1) Ballast for use with Biaxial Lamp EBX2=(2) Ballasts for use with Biaxial Lamp	Door/Finish Options ALP=Aluminum Door & Trim/ Polyester Powder Finish ALX=Extruded Aluminum Door & Trim/Clear Anodized Finish ALXP=Extruded Aluminum Door & Trim/ Polyester Powder Coat Finish (Standard)	Options EBP=Emergency Battery Pack GLR=Fuse and Holder RIF=Radio Frequency Interference Filter Housing Options SHN=Stainless Steel, Brushed 304 Finish SHP=Stainless Steel, Polyester Powder Finish ALH=Aluminum, Polyester Powder Finish
Lamp Type 2' Fixture Length T8 Fluorescents 117=(1) 17W Lamp 217=(2) 17W Lamps 317=(3) 17W Lamps 417=(4) 17W Lamps T12 Fluorescents 120=(1) 20W Lamp 220=(2) 20W Lamps 320=(3) 20W Lamps 420=(4) 20W Lamps U Lamps 2U 1 5/8=(2) 31W T8 Lamps 3U 1 5/8=(3) 31W T8 Lamps 2U6T8=(2) 32W T8 Lamps 2U6=(2) 40W T12 Lamps Biaxial Fluorescents 140BX=(1) 40W Lamp 240BX=(2) 40W Lamps 340BX=(3) 40W Lamps 4' Fixture Length T8 Fluorescents 132=(1) 32W Lamp 232=(2) 32W Lamps 332=(3) 32W Lamps 432=(4) 32W Lamps T12 Fluorescents 140=(1) 40W Lamp 240=(2) 40W Lamps 340=(3) 40W Lamps 440=(4) 40W Lamps						
Accessories (Order Separately) MFCF12-4FT=Mounting Frame (not required for installation) MFCF24-4FT=Mounting Frame (not required for installation)						

Notes: For additional options, consult your Cooper Lighting Representative. Specifications and Dimensions subject to change without notice.

¹ The KSH25 provides improved visual performance and wide angle distribution. This lens has an integral prism pattern designed so that prisms face the lamp cavity and still supply superior photometrics. Highly recommended for all high tech manufacturing environments. ² For specific electronic ballast, specify brand and catalog number.
 Download from www.somanuals.com. All Manuals Search And Download.

DESCRIPTION

The Fail-Safe SCF Series is designed for use in horizontal or non-laminar air flow clean rooms and features the added convenience of field retrofitting for flange or grid installations. The enclosed and gasketed housing and outside flanged door protect against infiltration of airborne bacteria. Fixture tested to 100 PSI hose down. Higher ratings available (consult factory). The mitered edges on the door frame and the hole-free design of the housing prevent air exchange between the fixture and plenum, allowing re-lamping without contamination of the clean areas. UL Listed Wet Location. These luminaires are manufactured in accordance with U.S.D.A., F.D.A., N.S.F. and Federal Standard 209E. The SCF Series is suitable for use in I.E.S. Class 10 (M2.5), 100 (M 3.5) 1,000 (M 4.5), 10,000 (M 5.5) and 100,000 (M 6.5) clean room environments.



SCF

17 W - 160 W
Fluorescent

1' x 2', 1' x 4', 2' x 2', 2' x 4'

SPECIFICATION GRADE
FLUORESCENT FLANGE
OUTSIDE FLANGED DOOR

- Lens is clear extruded with prisms positioned inside fixture and smooth surface on the outside for easy cleaning
- Flush mounted, stainless steel machine screws
- Nominal 5" deep recessed one-piece 20 ga. CRS housing
- Unique, Particulock™ lens retention system. Lens is hermetically sealed to door frame
- Optional extruded aluminum, mitered, fully gasketed, outside flanged door; or one-piece, die-formed stainless steel door and housing trim flange
- Standard Class P, CBM/ETL ballast
- MicroSeal™ gasketing system features silicone RTV sealant sealing lens to door frame and extruded silicone rubber gasketing seals door to housing and housing to ceiling
- Gasketed access plate with two flattened, 7/8" diameter knockouts
- Lamps by others

Free Manuals Download Website

<http://myh66.com>

<http://usermanuals.us>

<http://www.somanuals.com>

<http://www.4manuals.cc>

<http://www.manual-lib.com>

<http://www.404manual.com>

<http://www.luxmanual.com>

<http://aubethermostatmanual.com>

Golf course search by state

<http://golfingnear.com>

Email search by domain

<http://emailbydomain.com>

Auto manuals search

<http://auto.somanuals.com>

TV manuals search

<http://tv.somanuals.com>