

# FAIL-SAFE®



## VRGC 2VRGC

1' x 4', 2' x 2', 2' x 4'

1, 2, 3, OR 4 LAMP

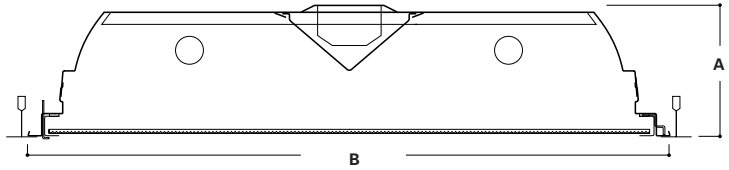
VANDAL RESISTANT  
LUMINAIRE

- Nominal 41/2" deep paracontoured housing, die formed code gauge, prime cold rolled steel
- Finish is lighting grade baked white enamel
- Die formed, heavy gauge, flat steel door with reinforced mitered corners and baked white enamel finish. Positive light seals. Frame and lens are secured to housing with 4 or 6 stainless steel TORX® screws
- Positive cam action spring loaded steel latches with baked white enamel finish
- Ballasts are CBM/ETL Class "P" and positively secured by mounting bolts. Pressure lock lampholders

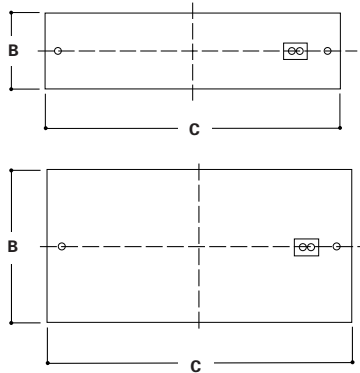
### DESCRIPTION

The Fail-Safe VRGC and 2VRGC Series fluorescent luminaires feature recessed aesthetics and the latest in energy-efficient technology. Their Energy Saving Ballast complies with Federal Energy Standards. Features include a die-embossed housing, four convenient end suspension points, and high comfort photometrics. U.L. listed and C.S.A. certified.

### DIMENSIONS



### MOUNTING



	A	B	C
<b>VRGC</b> (1' x 4')	5 5/8" (143mm)	11 3/4" (298mm)	48" (1219mm)
<b>2VRGC</b> (2' x 2')	4 5/8" (117mm)	23 3/4" (603mm)	24" (610mm)
<b>2VRGC</b> (2' x 4')	4 5/8" (117mm)	23 3/4" (603mm)	48" (1219mm)

### ORDERING INFORMATION

SAMPLE NUMBER: 2VRGC-232A-120V-EB81-U

<b>Width</b> Blank=1' 2=2'	<b>Number of Lamps</b> 1, 2, 3, or 4 lamps (Not included)	<b>Voltage</b> LTS=Low Trigger Start (20 Watt) HTS=High Trigger Start (20 Watt)	<b>Voltage <sup>1</sup></b> 120=120V 277=277V 347=347V UNV= Universal Voltage 120-277V	<b>Options</b> (order as suffix) PAF=Painted After Fabrication GL=Internal Single Element Fusing GM=Dual Element Fusing LCWE=F40/Cool White Energy Saving Lamps, Installed L8730=F32T8 3000 Kelvin Lamps, Installed L8735=F32T8 3500 Kelvin Lamps, Installed L8741=F32T8 4100 Kelvin Lamps, Installed EL4=Emergency Lighting self-contained <sup>1</sup> RIF1=Radio Interference Suppressor FR=Suitable for Fire Rated Applications EQ=T-BAR Safety Earthquake Clips <sup>2</sup> RLS=Rotor-Lock Socket (T8 Lamps Only) 6S=Six TORX-head Screws(3 per side) SC=Safety Chain
<b>Product Family</b> VR	<b>Wattage (Length)</b> U3=40W (24") U6=40W (24") U6T8=31W (24") 20=20W (24") 17=17W (24") U1-5/8=31W T8 (24") BX40=40W Biax (24") 40=40W (48") 32=32W T8 (48")	<b>Ballast Type</b> Standard Magnetic Ballast Leave Blank (Biax Only) LE3= Energy Saving Ballast LEOC8= Energy Saving Ballast (T-8 Lamp Only) EB = Generic Electronic Ballast	<b>No. of Ballasts</b> 1 or 2 <sup>2</sup> <b>Lamp Size</b> 2=T12 8=T8	
Trim Type <sup>1</sup> G=Grid/Lay-in - Standard G=Concealed T G=Slot Grid F=Flange Trim MZ=Modular Trim EMZ=Modular Trim (Extended Swing Arm)	<b>Lens Type</b> ACTF140= .140 Thick ACTF187= .187 Thick PA375= .250 polycarbonate with .125 prismatic overlay (standard with 6S option)	(For Specific Electronic Ballast Specify Brand and Catalog Number)		
<b>Series</b> C	<b>Door Type</b> Standard=Flat White Steel Door (Leave Blank)			

**NOTE:** For additional options, consult your Cooper Lighting Representative. Specifications and Dimensions subject to change without notice.

<sup>1</sup> Consult Pre Sales Technical Support. <sup>2</sup> Two ballast in 2 or 4 lamp require LAO (less access opening). <sup>3</sup> EQ Grid Clip is recommended for all 9/16" ceiling systems.

Download from [www.Somanuals.com](http://www.Somanuals.com). All Manuals Search And Download.

## Free Manuals Download Website

<http://myh66.com>

<http://usermanuals.us>

<http://www.somanuals.com>

<http://www.4manuals.cc>

<http://www.manual-lib.com>

<http://www.404manual.com>

<http://www.luxmanual.com>

<http://aubethermostatmanual.com>

Golf course search by state

<http://golfingnear.com>

Email search by domain

<http://emailbydomain.com>

Auto manuals search

<http://auto.somanuals.com>

TV manuals search

<http://tv.somanuals.com>