

# C CIRRUS

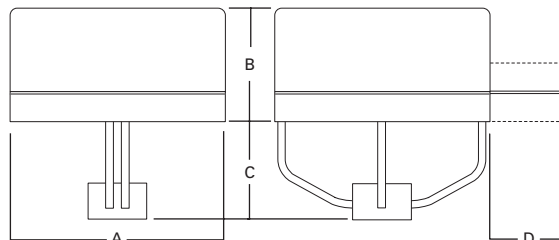
ARCHITECTURAL AREA LUMINAIRE

70-1000W  
MH/HPS/SMH



STREETWORKS™

IP55 RATED



Yoke Mount

Spider Mount / Arm Mount



NOTE: In solid top configuration only.

FIXTURE	A	B	C	D
<b>SMALL</b> (in.)	20 1/2	10 1/4	11	6
(mm)	521	260	279	152
<b>MEDIUM</b> (in.)	24	12 1/8	12 5/8	7 1/2
(mm)	610	308	321	191
<b>LARGE</b> (in.)	28	14 1/4	16	9
(mm)	610	362	406	229

## STRUCTURAL FRAME

Heavy-duty, die-cast aluminum frame is the main load-bearing structure for arm, yoke or spider mountings and serves as a heat sink for cooler operation and longer ballast life. Each optional package seats within the frame for precise photometric repeatability.

## HOUSING

Spun-aluminum top is finished in polyester powder coat enamel. Round shape reduces EPA and size of poles required. ANSI wattage/source label.

## OPTICAL SYSTEM

Cirrus offers a broad selection of premium performance segmented and hydroformed optical systems designed to optimize pole spacings and curtail spill light.

## DOOR

Die-cast aluminum door frame has concealed hinges and is flush with the bottom of the housing.

## LENS

Thermal shock- and impact-resistant clear tempered glass.

## BALLAST ASSEMBLY

Long life core-and-coil HID ballast is hard mounted for cooler operation.

## SOCKET

Porcelain screw-shell socket fits mogul-base HID lamps.

## ORDERING INFORMATION

SAMPLE NUMBER: CAS17MWW3D

### PRODUCT FAMILY <sup>1</sup>

CAS=Arm Solid Top  
CSS=Spider Solid Top  
CYS=Yoke Solid Top  
CAP=Arm Luminous Top <sup>2</sup>  
CSP=Spider Luminous Top <sup>2</sup>  
CYP=Yoke Luminous Top <sup>2</sup>

### LAMP WATTAGE

70=70W  
10=100W <sup>3</sup>  
15=150W  
17=175W  
25=250W  
40=400W  
91=1000W

### LAMP TYPE <sup>4</sup>

S=High Pressure Sodium  
M=Metal Halide  
R=SMH

### BALLAST TYPE <sup>4</sup>

P=Hi. React./HPF  
W=CWA  
C=CWI  
K=10KV CWA <sup>5</sup>

### VOLTAGE <sup>4</sup>

2=120V  
0=208V  
4=240V  
7=277V  
8=480V  
W=Multi-Tap wired 120V  
N=Multi-Tap wired 277V  
V=Multi-Tap wired 240V

### DISTRIBUTION <sup>6</sup>

1D=Type I MCO <sup>7</sup>  
2D=Type II MCO  
3D=Type III MCO  
4D=Type IV MCO  
5D=Type V MCO <sup>7</sup>  
2S=Type II Segmented <sup>7</sup>  
3S=Type III Segmented <sup>7</sup>  
4S=Type IV Segmented <sup>7</sup>  
5S=Type V Segmented <sup>7</sup>  
SL=Spill Light Eliminator <sup>7</sup>

### OPTIONS + ACCESSORIES (See Below)

## OPTIONS + ACCESSORIES [Must be listed in the order shown and separated by a dash]

### OPTIONS (add as suffix)

1=Single Fused, Internally Mounted (120 or 277)  
2=Double Fused, Internally Mounted (208, 240, or 480V)  
4=Photocontrol Receptacle  
WH=White  
BK=Black  
AP=Grey  
DP=Dark Platinum  
B=House Side Shield  
P=Button Photocontrol

### ACCESSORIES (order separately)

MA1001=Wall Bracket for Solid Top units <sup>8</sup>  
MA1003=Wall Bracket for Luminous Top units <sup>9</sup>

## OPTIONAL COLORS [Standard color is bronze, other finish colors available. Consult your Cooper Lighting representative]

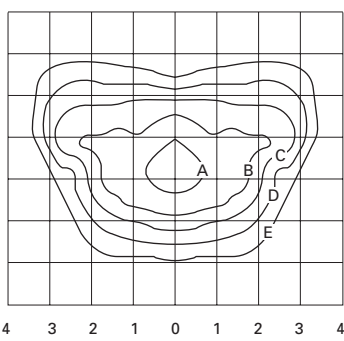


## SHIPPING DATA

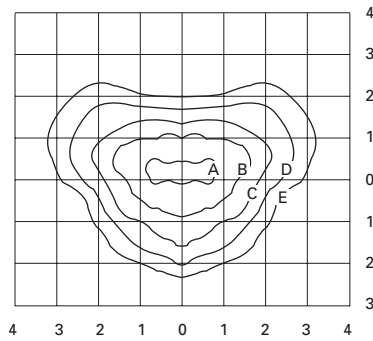
Approximate Net Weight:  
65 lbs. (30 kgs.)

NOTE: 1 Small up to 175W. Medium 250 to 400W. Large 1000W. 2 Luminous dome available in 250W maximum and designed to fit 5" poles. Luminous units only available in 120 or 277V. 3 Medium-base lamp. 4 Refer to technical section for lamp/ballast/voltage compatibility. 5 70-150W max. 6 Segmented optics available on solid top designs and small/medium housings only. Max wattage on small segmented optics is Medium Base 175W. Reduce jacket lamp required on 400W MH. 7 Not available in 1000W. 8 Available for small and medium units only. 9 Not available in 250 HPS.

PHOTOMETRICS [Complete IES files available at www.cooperlighting.com]



**CXS40S3D. IES**  
400-Watt HPS  
50,000-Lumen Lamp  
Type III



**CXS40M3D. IES**  
400-Watt MH  
36,000-Lumen Lamp  
Type III

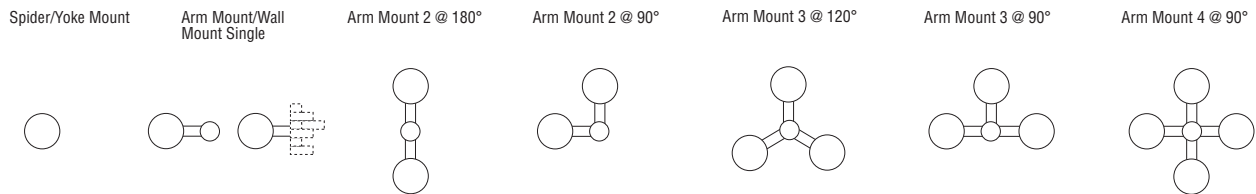
**FOOTCANDLE TABLE**

Select mounting height and read across for footcandle values of each isofootcandle line. Distance in units of Mounting Height.

Mounting Height	Footcandle Values for Isofootcandle Lines				
	A	B	C	D	E
<b>CXS40S3D. IES</b>					
20'	11.25	4.50	2.25	1.12	0.56
25'	7.20	2.88	1.44	0.72	0.36
30'	<b>5.00</b>	<b>2.00</b>	<b>1.00</b>	<b>0.50</b>	<b>0.25</b>
35'	3.65	1.46	0.73	0.36	0.18
40'	2.80	1.12	0.56	0.28	0.14

<b>CXS40M3D. IES</b>					
20'	11.25	4.50	2.25	1.12	0.56
25'	7.20	2.88	1.44	0.72	0.36
30'	<b>5.00</b>	<b>2.00</b>	<b>1.00</b>	<b>0.50</b>	<b>0.25</b>
35'	3.65	1.46	0.73	0.36	0.18
40'	2.80	1.12	0.56	0.28	0.14

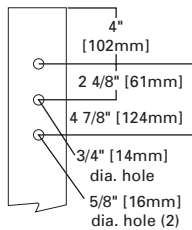
**MOUNTING CONFIGURATIONS**



E.P.A. TABLE	DRILL PATTERN	SINGLE					4 @ 90°
		[W/Arm where applicable]	2 @ 180°	2 @ 90°	3 @ 90°	3 @ 120°	
SMALL [Arm Mount]	"Z"	1.19	2.38	2.38	3.57	4.165	
SMALL [Spider/Yoke Mount]	4" or 5"	1.13	n/a	n/a	n/a	n/a	
MEDIUM [Arm Mount]	"Z"	1.7	3.4	3.4	5.1	5.95	
MEDIUM [Spider/Yoke Mount]	5"	1.52	n/a	n/a	n/a	n/a	
LARGE [Arm Mount]	"Z"	2.36	4.72	4.72	7.08	8.26	
LARGE [Spider/Yoke Mount]	6"	2.1	n/a	n/a	n/a	n/a	

**DRILLING PATTERN**

TYPE "Z"



## Free Manuals Download Website

<http://myh66.com>

<http://usermanuals.us>

<http://www.somanuals.com>

<http://www.4manuals.cc>

<http://www.manual-lib.com>

<http://www.404manual.com>

<http://www.luxmanual.com>

<http://aubethermostatmanual.com>

Golf course search by state

<http://golfingnear.com>

Email search by domain

<http://emailbydomain.com>

Auto manuals search

<http://auto.somanuals.com>

TV manuals search

<http://tv.somanuals.com>