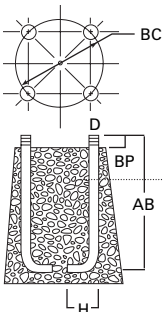
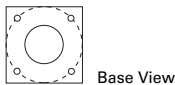
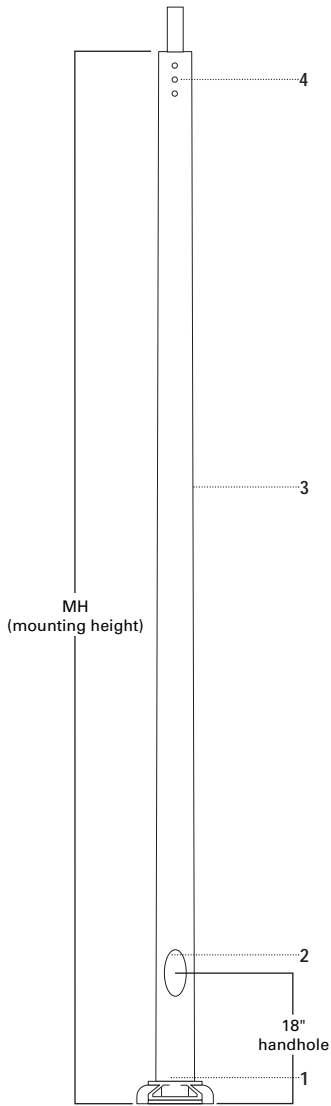


RTA ROUND TAPERED ALUMINUM

10'—40' MOUNTING HEIGHT



SPECIFICATION FEATURES

- 1 ··· Cast aluminum alloy shoe base with aluminum alloy bolt covers or base cover dependent upon base type.
- 2 ··· Flush reinforced 2 3/8" x 4 1/2" for 4" shafts. Hand hole assembly with internal reinforcing frame. 3" x 5" for 5" and 6" shafts, 4" x 6" for 7", 8", 10" shafts. Ground lug located opposite hand hole opening drilled & tapped for 3/8" 16NC-2 grounding screw.
- 3 ··· Tapered aluminum lighting shaft with polished finish.
- 4 ··· Drilled or Tenon (specify).
- 5 ··· Anchor bolt per ASTM A576 with (1) nut, (1) flat washer, and (2) shims. Nuts, washers and threaded portion of bolt are hot dip galvanized.

FOUR BOLT ANCHORAGE [See ordering information]

- BC=Bolt Circle
- BP=Bolt Projection
- AB=Bolt Dimensions
- D=Bolt Diameter
- H=Bolt Dimensions

FINISH COLORS [See ordering information. Other finish colors available.]

- B=Clear Anodized
- C=Dark Bronze Anodized
- D=Black Anodized
- E=Medium Bronze Anodized
- F=Dark Bronze Powder Coat
- V=Grey Powder Coat
- W=White Powder Coat
- X=None (natural aluminum)
- Y=Black Powder Coat

WARNING: THE USE OF UNAUTHORIZED ACCESSORIES SUCH AS BANNERS, SIGNS OR PENNANTS FOR WHICH THE POLE WAS NOT DESIGNED FOR VOIDS THE COOPER LIGHTING WARRANTY AND MAY RESULT IN POLE FAILURE CAUSING SERIOUS INJURY OR PROPERTY DAMAGE. COOPER LIGHTING'S POLE WARRANTY IS ALSO VOIDED IF LUMINAIRE IS NOT INSTALLED AT TIME OF POLE INSTALLATION.

ORDERING INFORMATION

SAMPLE NUMBER: RTA5M20NA

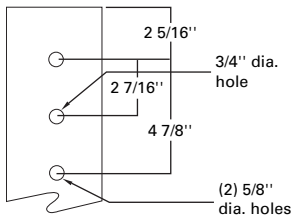
Round	Tapered	Aluminum	Shaft Dia. (at base)	Wall Thickness	Mounting Height (ft.)	Base Type	Finish	Fixture Mounting & Type	No. & Location of Arms	Arm Lengths	Accessories (Vibration Damper)
R	T	A	5	M	20	N	A	X	X	X	V

Mtg. Height (Ft.)	Catalog Number ³	Wall Thickness (In.)	Base Dia. or Square (In.)	Shaft Taper (In.)	Bolt Proj. (In.)	Bolt Circle Dia. (In.)	Anchor Bolt D x AB x H (In.)	Net. Wt. (Lbs.)	EPA (Sq. Ft.) ^{2,4} At Pole Top				EPA (Sq. Ft.) ^{2,4} 18" Above Pole Top				Max. Fixture Load Include
									70	80	90	100	70	80	90	100	
MH			S	B	BP	BC	AB										
10	RTA4T10NA	.125	9 1/4	4 x 3	1 7/8	6 3/4	3/4 x 17 x 3	22	14.9	11.0	8.4	6.6	12.6	9.4	7.1	5.6	100
12	RTA4T12NA	.125	9 1/4	4 x 3	1 7/8	6 3/4	3/4 x 17 x 3	25	11.3	8.2	6.1	4.6	9.8	7.2	4.3	4.0	100
15	RTA4T15NA	.125	9 1/4	4 x 3	1 7/8	6 3/4	3/4 x 17 x 3	30	7.7	5.4	3.8	2.7	6.8	4.8	3.4	2.4	100
15	RTA5T15NA	.125	10 1/2	5 x 3	1 7/8	7 3/4	3/4 x 17 x 3	33	13.6	9.9	7.4	5.6	12.2	8.8	6.6	5.0	100
18	RTA5T18NA	.125	10 1/2	5 x 3	1 7/8	7 3/4	3/4 x 17 x 3	39	9.9	6.9	4.9	3.6	9.0	6.3	4.5	3.3	100
18	RTA6L18AA	.156	10 1/4	6 x 4	2 1/8	9 3/8	3/4 x 17 x 3	57	19.9	14.6	11.1	8.8	18.2	13.3	10.1	8.0	100
20	RTA5T20NA	.125	9 1/4	5 x 3	1 7/8	8 1/2	3/4 x 17 x 3	43	8.0	5.4	3.7	2.5	7.3	4.9	3.4	2.3	100
20	RTA6L20AA	.156	10 1/4	6 x 4	2 1/8	9 3/8	3/4 x 17 x 3	64	16.5	11.9	8.9	7.0	15.6	10.9	8.2	6.4	150
25	RTA6L25AA ¹	.156	10 1/4	6 x 4	2 1/8	9 3/8	3/4 x 17 x 3	81	10.4	7.8	5.0	3.7	9.7	6.6	4.6	3.5	150
25	RTA8L25AA ¹	.156	11 5/8	8 x 4 1/2	2 3/4	11 1/2	1 x 36 x 4	106	23.3	17.2	13.2	10.4	21.7	16.0	12.3	9.7	200
30	RTA7L30AA ¹	.156	10 5/8	7 x 4	2 3/4	10 1/2	1 x 36 x 4	108	11.0	7.5	5.3	4.0	10.4	7.1	4.0	3.7	150
30	RTA8L30AA ¹	.156	11 5/8	8 x 4 1/2	2 3/4	11 1/2	1 x 36 x 4	117	16.4	11.8	8.9	6.9	15.4	11.1	8.4	6.5	200
30	RTA0L30AA ¹	.156	14 1/2	10 x 6	2 7/8	14 1/2	1 x 36 x 4	152	30.5	22.8	17.6	13.8	28.8	21.6	16.6	13.0	250
35	RTA8L35AA ¹	.156	11 5/8	8 x 4 1/2	2 3/4	11 1/2	1 x 36 x 4	140	11.5	7.9	5.8	4.3	10.9	7.5	5.5	4.1	150
35	RTA0L35AA ¹	.156	14 1/2	10 x 6	2 7/8	14 1/2	1 x 36 x 4	180	23.3	17.3	13.1	10.0	22.2	16.4	12.5	9.5	200
40	RTA8M40AA ¹	.188	11 5/8	8 x 4 1/2	2 3/4	11 1/2	1 x 36 x 4	210	11.0	7.5	5.3	3.9	10.6	7.1	5.1	3.7	100
40	RTA0L40AA ¹	.156	14 1/2	10 x 6	2 7/8	14 1/2	1 x 36 x 4	209	17.9	13.0	9.6	7.1	17.2	12.5	9.2	6.8	150

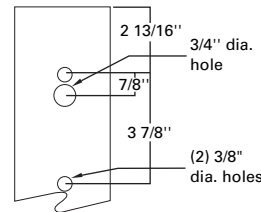
NOTES: 1 Factory installed vibration dampeners. 2 Where higher EPA/wind speed capability or mounting height is required, other shaft dimensions and/or wall thickness are available. consult Cooper Lighting representative for pricing and lead times. The above E.P.A. capacities are based on loading from (1994) and pole drag coefficients from (2001) American Association of State Highway and Transportation Officials Specification. 3 Catalog item includes one set of anchor bolts, single nuts and (2) leveling shims. 4 EPAs based on shaft properties with wind normal to flat. EPAs calculated using base wind velocity as indicated plus 30% gust factor.

DRILLING PATTERN

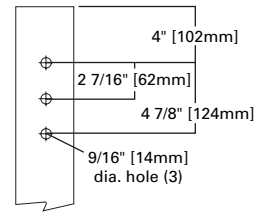
Type "M" [RCL, Landau, Galleria and Vision]



Type "E" [Concourse III]



Type "Z" [Credenza and Cirrus]



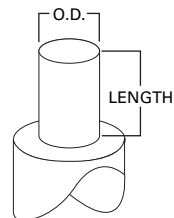
MACHINING FOR RECTANGULAR ARMS [Add as suffix]

Designation Letter & Number	Designation Letter & Number	Designation Letter & Number	Quantity & Location
M1	E1	Z1	Single
M2	E2	Z2	2 @ 180°
M3	E3	Z3	3 @ 120°
M4	E4	Z4	4 @ 90°
M5	E5	Z5	2 @ 90°

NOTES: Refer to Fixture Drilling Options on page 160.

MOUNTING OPTIONS [Add as suffix]

Fixed Tenon	Designation Number	O.D. (In.)	Length (In.)
	1	2 3/8	3 1/2
	2	2 3/8	4
	5	3	4
	4	4	6

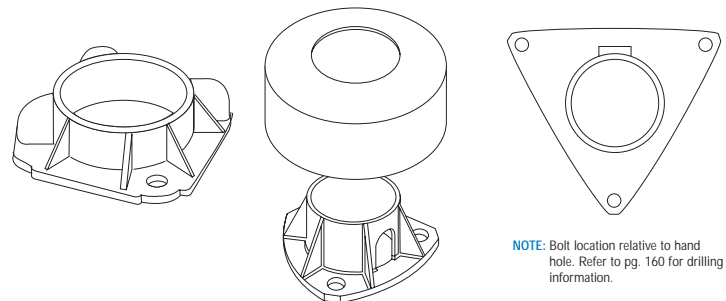


ACCESSORIES [Order separately]

- C=Convenience Outlet
- E=GFI Convenience Outlet
- F=Vibration Pad
- G=Ground Lug
- V=Vibration Damper
- B=Base Cover ("A" Base Only)

STANDARD BASE [Round Aluminum Pole Only]

- TYPE A 6", 7", 8" or 10"
- TYPE N [Standard with base cover] 4", 5", or 6"



NOTE: Bolt location relative to hand hole. Refer to pg. 160 for drilling information.

NOTE: Specifications and dimensions subject to change without notice.

Free Manuals Download Website

<http://myh66.com>

<http://usermanuals.us>

<http://www.somanuals.com>

<http://www.4manuals.cc>

<http://www.manual-lib.com>

<http://www.404manual.com>

<http://www.luxmanual.com>

<http://aubethermostatmanual.com>

Golf course search by state

<http://golfingnear.com>

Email search by domain

<http://emailbydomain.com>

Auto manuals search

<http://auto.somanuals.com>

TV manuals search

<http://tv.somanuals.com>