

RTA ROUND TAPERED ALUMINUM

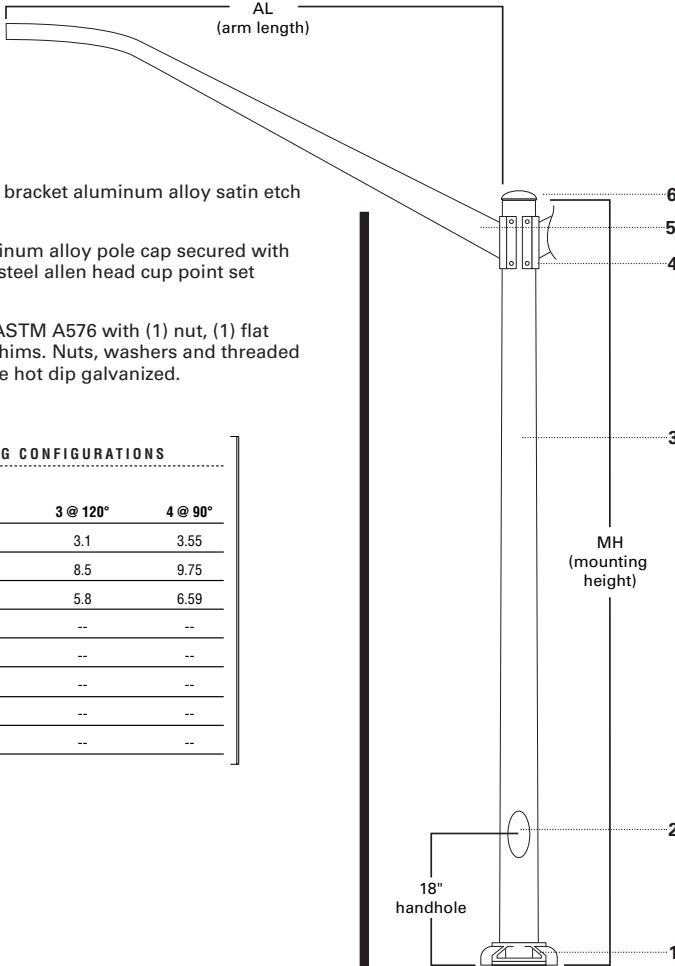
20' - 40' Mounting Height

[WITH ROUND TWIN ELLIPTICAL ARM]

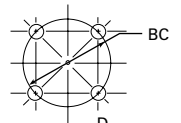
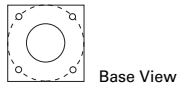
Catalog #		Type
Project		
Comments		Date
Prepared by		

SPECIFICATION FEATURES

- Cast aluminum alloy shoe base with aluminum alloy bolt covers or base cover dependent upon base type.
- Flush handhole assembly with internal reinforcing frame. 3" x 5" for 6" shafts. 4" x 6" for 7", 8", & 10" shafts. Ground lug located opposite handhole opening drilled & tapped for 3/8" 16NC-2 grounding screw.
- Tapered aluminum lighting shaft with polished finish.
- Aluminum alloy arm mounting plate fastened by (4) 1/2" stainless steel hex head bolts, nuts and washers. Shaft drilled 1 1/4" diameter wire hole with 1" I.D. rubber grommet installed.
- Tapered elliptical bracket aluminum alloy satin etch finish.
- Removable aluminum alloy pole cap secured with (3) 1/4" stainless steel allen head cup point set screws.
- Anchor bolt per ASTM A576 with (1) nut, (1) flat washer, and (2) shims. Nuts, washers and threaded portion of bolt are hot dip galvanized.



POLE COMPATIBILITY MATRIX		EPA + MOUNTING CONFIGURATIONS			
PRODUCT	TENON	Single	2 @ 180°	3 @ 120°	4 @ 90°
CONCOURSE III [CAL]	1 1/2" to 2 3/8" O.D.	1.1	2.2	3.1	3.55
LANDUA [LND]	2 3/8" O.D.	2.7	5.4	8.5	9.75
HAMMER [HR]	2 3/8" O.D.	2.11	4.22	5.8	6.59
RY COBRAHEAD	1" or 2" NPS ARM	0.87	--	--	--
RS COBRAHEAD	1" or 2" NPS ARM	0.85	--	--	--
RL COBRAHEAD	1" or 2" NPS ARM	0.51	--	--	--
RC COBRAHEAD	1" or 2" NPS ARM	0.8	--	--	--
MC/MX	2" NPS ARM	1.46	--	--	--



FINISH COLORS [See ordering information. Other finish colors available]

- | | | |
|---------------------------------|-----------------------------------|-----------------------------------|
| B =Clear Anodized | E =Medium Bronze Anodized | W =White Powder Coat |
| C =Clear Bronze Anodized | F =Dark Bronze Powder Coat | X =None (Natural Aluminum) |
| D =Black Anodized | V =Grey Powder Coat | Y =Black Powder Coat |

WARNING: THE USE OF UNAUTHORIZED ACCESSORIES SUCH AS BANNERS, SIGNS OR PENNANTS FOR WHICH THE POLE WAS NOT DESIGNED FOR VOIDS THE COOPER LIGHTING WARRANTY AND MAY RESULT IN POLE FAILURE CAUSING SERIOUS INJURY OR PROPERTY DAMAGE. COOPER LIGHTING'S POLE WARRANTY IS ALSO VOIDED IF LUMINAIRE IS NOT INSTALLED AT TIME OF POLE INSTALLATION.

FOUR BOLT ANCHORAGE
 BC=Bolt Circle
 BP=Bolt Projection
 AB=Anchor Bolt
 D=Bolt Diameter
 H=Bolt Dimensions



ORDERING INFORMATION

SAMPLE NUMBER: RTA6L20AAS24V

Round	Tapered	Aluminum	Shaft Dia. (at base)	Wall Thickness	Mounting Height (ft.)	Base Type	Finish	Fixture Mounting & Type	No. & Location of Arms	Arm Lengths	Accessories (Vibration Damper)
R	T	A	6	L	20	A	A	S	2	4	V

Mtg. Height (Ft.)	Arm Length (Ft.)	Catalog Number ³	Shaft Dia. (In.)	Top Dia. (In.)	Wall Thickness (In.)	Bolt Circle Dia. (In.)	Anchor Bolt D x AB x H (In.)	Bolt Projection (In.)	Net. Wt. (Lbs.)	Luminaire EPA Rating ^{2,4} Weight—75 lbs. (mph)				Max. Fixture Load—Include Bracket (Lbs.)
MH	AL					BC	AB	BP		70	80	90	100	
20	4	RTA6L20AAS24	6	4	.156	9 3/8	3/4 x 17 x 3	2 1/8	97	5.9	3.9	2.6	1.7	150
20	4	RTA7L20AAS24	7	4	.156	10 1/2	1 x 36 x 4	2 3/4	138	8.9	6.6	4.7	3.5	150
20	6	RTA6L20AAS26	6	4	.156	9 3/8	3/4 x 17 x 3	2 1/8	109	5.4	3.5	2.2	1.3	150
20	6	RTA7L20AAS26	7	4	.156	10 1/2	1 x 36 x 4	2 3/4	150	6.3	4.7	3.5	2.7	150
20	8	RTA7L20AAS28	7	4	.156	10 1/2	1 x 36 x 4	2 3/4	154	4.5	3.2	2.3	1.7	150
25	4	RTA7L25AAS24	7	4	.156	10 1/2	1 x 36 x 4	2 3/4	158	5.7	3.7	2.4	1.5	150
25	4	RTA8L25AAS24	8	4 1/2	.156	11 1/2	1 x 36 x 4	2 3/4	171	8.7	6.1	4.3	3.1	150
25	6	RTA7L25AAS26	7	4	.156	11 1/2	1 x 36 x 4	2 3/4	170	5.3	3.2	1.9	1.1	150
25	6	RTA8L25AAS26	8	4 1/2	.156	11 1/2	1 x 36 x 4	2 3/4	184	6.3	4.7	3.5	2.6	150
25	8	RTA8L25AAS28	8	4 1/2	.156	11 1/2	1 x 36 x 4	2 3/4	188	4.5	3.2	2.3	1.7	150
30	4	RTA8L30AAS24 ¹	8	4 1/2	.156	11 1/2	1 x 36 x 4	2 3/4	187	3.2	1.6	--	--	150
30	4	RTA8M30AAS24	8	4 1/2	.188	11 1/2	1 x 36 x 4	2 3/4	215	7.5	5.0	3.5	2.4	150
30	6	RTA8L30AAS26	8	4 1/2	.156	11 1/2	1 x 36 x 4	2 3/4	194	5.1	3.1	1.8	1.0	150
30	6	RTA8M30AAS26	8	4 1/2	.188	11 1/2	1 x 36 x 4	2 3/4	227	6.3	4.6	3.0	1.9	150
30	8	RTA8M30AAS28	8	4 1/2	.188	11 1/2	1 x 36 x 4	2 3/4	231	4.5	3.2	2.2	1.1	150
30	8	RTA0L30AAS28	10	6	.156	14 1/2	1 x 36 x 4	2 7/8	235	4.5	3.2	2.3	1.7	150
35	4	RTA0L35AAS24	10	6	.156	14 1/2	1 x 36 x 4	2 7/8	247	8.2	5.6	3.9	2.6	150
35	6	RTA0L35AAS26	10	6	.156	14 1/2	1 x 36 x 4	2 7/8	259	6.3	4.7	3.4	2.1	150
35	8	RTA0L35AAS28	10	6	.156	14 1/2	1 x 36 x 4	2 7/8	263	4.5	3.2	2.3	1.3	150
35	8	RTA0M35AAS28	10	6	.188	14 1/2	1 x 36 x 4	2 7/8	306	4.5	3.2	2.3	1.7	150
40	4	RTA0M40AAS24	10	6	.188	14 1/2	1 x 36 x 4	2 7/8	322	7.8	5.3	3.5	2.2	150
40	6	RTA0M40AAS26	10	6	.188	14 1/2	1 x 36 x 4	2 7/8	336	6.3	4.7	3.1	1.8	150
40	8	RTA0X40AAS28	10	6	.250	14 1/2	1 1/4 x 42 x 6	3 1/8	420	4.5	3.2	2.3	1.7	150

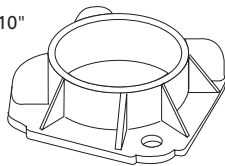
NOTES: 1 Factory installed vibration dampeners. 2 The above is our standard offering. Where higher EPA/wind speed capability or mounting height is required, other shaft dimensions and/or wall thickness are available. Consult Cooper Lighting representative for pricing and lead times. The above E.P.A. capacities are based on loading from (1994) and pole drag coefficients from (2001) American Association of State Highway and Transportation Officials Specification. 3 Catalog item includes one set of anchor bolts, single nuts and (2) leveling shims. 4 EPAs based on shaft properties with wind normal to flat. EPAs calculated using base wind velocity as indicated plus 30% gust factor.

ACCESSORIES [Order separately]

- C=Convenience Outlet
- E=GFI Convenience Outlet
- F=Vibration Pad
- G=Ground Lug
- V=Vibration Damper
- D=Base Cover ("A" Base Only)

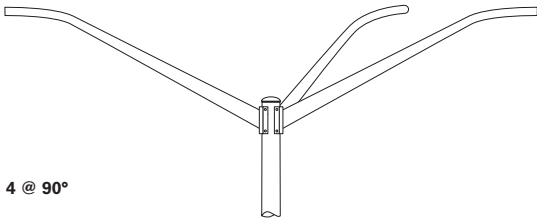
STANDARD BASE [Round Aluminum Pole Only]

TYPE A
6", 7", 8" or 10"

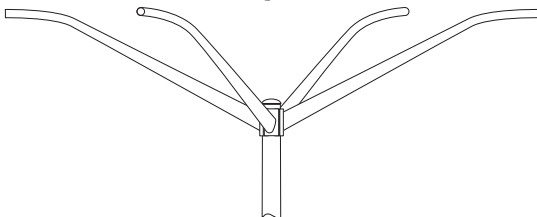


ARMS [Below available on request—Consult factory]

3 @ 120°



4 @ 90°



Free Manuals Download Website

<http://myh66.com>

<http://usermanuals.us>

<http://www.somanuals.com>

<http://www.4manuals.cc>

<http://www.manual-lib.com>

<http://www.404manual.com>

<http://www.luxmanual.com>

<http://aubethermostatmanual.com>

Golf course search by state

<http://golfingnear.com>

Email search by domain

<http://emailbydomain.com>

Auto manuals search

<http://auto.somanuals.com>

TV manuals search

<http://tv.somanuals.com>