

DSLAAU

# USB ADSL Modem



## User Manual



**1. Overview**

|   |   |
|---|---|
| 1.1 About ADSL.....                           | 4 |
| 1.2 Protocol and Device Driver Selection..... | 4 |
| 1.3 Features.....                             | 6 |

**2. Hardware Installation**

|                              |   |
|------------------------------|---|
| 2.1 Before you start .....   | 7 |
| • Hardware Installation..... | 7 |

**3. Software Installation**

|                                       |    |
|---------------------------------------|----|
| 3.1 Before you start.....             | 8  |
| 3.2 Windows Installation.....         | 9  |
| • Installing the Driver Software..... | 9  |
| 3.3 MAC OS 9.x Installation.....      | 14 |
| • Installing the Driver Software..... | 14 |
| 3.4 MAC OS X Installation.....        | 15 |
| • Installing the Driver Software..... | 15 |

**4. Customizing Communication Settings**

|  |    |
|--|----|
| 4.1 Accessing Communication Settings on Windows..... | 17 |
| 4.2 Accessing Communication Settings on Mac.....     | 17 |

**5. Updating Software**

|   |    |
|---|----|
| 5.1 Windows Drivers Update.....             | 18 |
| 5.2 MAC OS 9.x and OS X Drivers Update..... | 18 |

**6. Software Uninstall**

|                               |    |
|-------------------------------|----|
| 6.1 Windows Uninstall.....    | 19 |
| 6.2 MAC OS 9.x Uninstall..... | 19 |
| 6.3 MAC OS X Uninstall.....   | 20 |

## Appendix A: Modifying TCP/IP Networking Options

|   |    |
|---|----|
| • WAN USB Driver.....                       | 22 |
| Microsoft Windows XP.....                   | 22 |
| Microsoft Windows 2000.....                 | 25 |
| Microsoft Windows Me.....                   | 27 |
| Microsoft Windows 98 and Windows 98 SE..... | 30 |
| MAC OS 9.x.....                             | 32 |
| MAC OS X.....                               | 35 |
| • Establishing a Connection.....            | 38 |
| • LAN USB Driver.....                       | 39 |
| Microsoft Windows XP.....                   | 39 |
| Microsoft Windows 2000.....                 | 41 |
| Microsoft Windows Me.....                   | 43 |
| Microsoft Windows 98 and Windows 98 SE..... | 46 |
| MAC OS 9.x.....                             | 47 |
| MAC OS X.....                               | 48 |
| • Establishing a Connection.....            | 51 |

## Appendix B: Point-to-Point Protocol over Ethernet

|                                 |    |
|---------------------------------|----|
| PPPoE for WAN Applications..... | 53 |
| PPPoE for LAN Applications..... | 53 |

## Appendix C: Specifications

|                                |    |
|--------------------------------|----|
| • corega DSLAAU Connector..... | 55 |
| • Data Transfer Rates.....     | 55 |
| • Power Requirements.....      | 56 |
| • System Requirements .....    | 56 |
| • Hardware Requirements.....   | 57 |

This manual contains information regarding the installation, operation, and configuration of corega DSLAAU. Additionally, it outlines the use of the Control Panel Application.

The following chapters are included in this manual:

- **Chapter 1:** "Overview" offers a brief description of ADSL, protocol and device driver selection, and the features of corega DSLAAU.
- **Chapter 2:** "Hardware Installation" describes the steps for connecting corega DSLAAU.
- **Chapter 3:** "Software Installation" describes the steps for installing corega DSLAAU drivers under various operating systems.
- **Chapter 4:** "Customizing Communication Settings" provides detailed steps for altering the ATM Virtual Path ID (VPI), ATM Virtual Circuit ID (VCI), Encapsulation type and/or Modulation type values previously defined.
- **Chapter 5:** "Updating Software," details the procedure for updating to a new version of the modem software.
- **Chapter 6:** "Software Uninstall" provides detailed steps for removing corega DSLAAU software from the PC.

## 1.1 About ADSL

Asymmetric Digital Subscriber Line (ADSL) technology provides high-speed data access across regular phone lines (copper wires) by making use of previously unused frequency bandwidth above the voice band. By placing the ADSL signal above the frequency of the voice signal, ADSL service is able to coexist on the same line with your telephone service. ADSL is asymmetric in the sense that it provides a higher data rate in the downstream (receive) direction than in the upstream (transmit) direction. Asymmetric operation is ideal for typical home and small office use where files and information are downloaded more frequently than uploaded.

corega DSLAAU is capable of supporting the following DSL standards: ANSIT1.413 Issue 2, ITU G.992.1 (G.DMT), ITU G.992.2 (G.lite), and ITU G.992 Annexes A, B, and C as applicable.

## 1.2 Protocol and Device Driver Selection

corega DSLAAU can be easily connected to a USB port on the PC via a standard USB cable. corega DSLAAU is fully software upgradeable so that new features and updates may be added by simply loading a new version of the device driver onto your PC.

two types of device drivers are provided for corega DSLAAU, WAN, and LAN. The proper choice of driver depends on the combination of Windows operating system and protocol.

1. WAN driver – This driver causes the modem to resemble a dial-up modem. Call establishment is performed through Dial-Up Networking. This driver supports RFC 2364 and 2516 with PVC connections. It can be used with Windows 98, Windows 98 SE,

Windows 2000, Windows Me, and Windows XP, MAC OS 9.x (RFC 2364 only), MAC OS X 10.1.x and above (RFC 2364 only), as well as Linux.

2. LAN driver - This driver makes the modem appear as a LAN or Ethernet device. Connection establishment is automatic. This driver supports RFC 1483 with PVC connections. Additionally, PPPoE is supported via third-party software. This driver can be used with Windows 98, Windows 98 SE, Windows 2000, Windows Me, and Windows XP, MAC OS 9.x, MAC OS X 10.1.x and above, as well as Linux.

The device driver choices are summarized in the table below:

| Driver Type | Protocol  | Operating System   |
|-------------|---|--|
| WAN         | RFC 2364<br>RFC 2516 (not with<br>MAC OS 9.x, nor<br>with MAC OS X) | Windows 2000<br>Windows XP<br>Windows Me<br>Windows 98 SE<br>Windows 98<br>MAC OS 9.x<br>MAC OS X 10.1.x and above |
| LAN         | RFC 1483<br>RFC 2516 (MAC OS<br>X 10.1.x and above,<br>only)        | Windows 2000<br>Windows XP<br>Windows Me<br>Windows 98 SE<br>Windows 98<br>MAC OS 9.x<br>MAC OS X 10.1.x and above |

## 1.3 Features

corega DSLAAU provides the following features:

- Compliant with Universal Serial Bus Specification Revision 1.1
- USB bus-powered; an external power supply is not required
- Supports two device drivers: Microsoft NDIS 4.0 WAN Miniport and NDIS 4.0 LAN Miniport
- Compatible with T1.413 i2, G.DMT, and G.lite compliant CO DSLAM equipment
- Software upgradeable
- Includes a control panel monitoring program for configuring the adapter and checking the status of the connection on both Windows and Macintosh systems
- Provides an RJ-11 connector for connection to the telephone line
- Supports DSL downstream data rates up to 8 Mbps (125 times faster than standard 56K modems)
- Supports DSL upstream data rates up to 1024 kbps
- Support for PPP over Ethernet (PPPoE)



## 2.1 Before you start...

In MAC operating systems, you need to install the device drivers first (see next chapter) and then perform the hardware installation steps below.

### • Hardware Installation

Install corega DSLAAU by following steps with the PC running:

1. Insert the rectangular end of a USB cable into the USB port of your PC.
2. Insert the square end of the USB cable into the USB port of corega DSLAAU.

In **Windows** operating systems, corega DSLAAU will be detected and informational messages will be displayed on the PC's screen. Proceed with the software installation in the next chapter, using the operating system appropriate to you.

The software installation procedures vary depending upon the operating system of your PC. Be sure to follow the instructions provided for the operating system appropriate for you.

## 3.1 Before you start...

The following information may be required for software installation. Contact your DSL service provider before proceeding with software installation.

- IP Address Settings – the software installation process allows the server to dynamically assign IP Address settings. If your application requires static setting of specific address information you will need to know:
  - IP Address
  - Subnet Mask  
(for Bridged Ethernet applications only)
  - Default Gateway  
(for Bridged Ethernet applications only)
- Name Server Information – the software installation process allows the server to dynamically assign Name Server Address settings. If your application requires static setting of specific address information you will need to know:
  - Primary DNS Address
  - Secondary DNS Address
  - Primary WINS Address
  - Secondary WINS Address
- Type of Driver to be installed – WAN and LAN software drivers are supported.  
*\* Note: Required if not using default value*

- Encapsulation type  
*\* Note: Required if not using default value*
- Modulation type  
*\* Note: Required if not using default value*
- User Name (for PPP applications only)
- Password (for PPP applications only)

## 3.2 Windows Installation

The software setup process for Microsoft Windows applications (XP, 2000, Me, 98 SE, and 98) is described below with operating system specific differences noted. corega DSLAAU should be connected to your PC prior to installing the driver software. No other Windows programs should be running on your PC during the software install process.

*\* Note: The appearance of the windows and the wording of the options may be slightly different for each operating system, but the same procedure applies.*

### • Installing the Driver Software

1. In the procedure that follows, we shall refer to the folder where the driver files reside as the Device Driver Folder.
2. An informational message may be displayed. If so, click Next> to start the installation.
3. A window will appear asking what you want the system to do. The recommended option will always search for the appropriate driver software. Select the recommended option by clicking on the radio button to its left, and click Next>

4. A window may be displayed which allows you to specify the location of the driver software to be installed. If so, point to the Device Driver Folder (See Step 1) with no other options selected and click Next>. A message will indicate that the system is ready to install the device driver; click Next>.

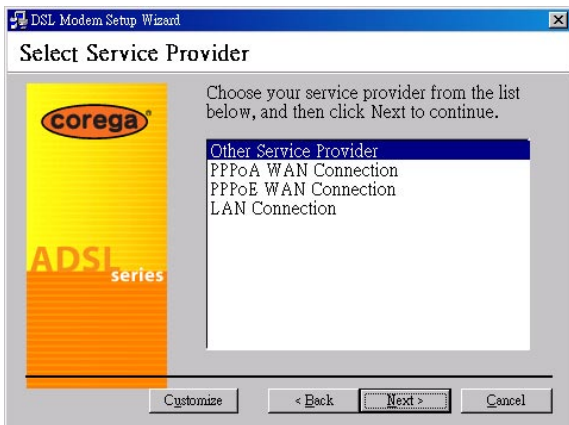
a) For Windows Me applications, the "Select Other Driver" window may ask you to select the driver from a list of drivers. If asked, highlight the root directory, identified with "GROOTUSB.INF" in the Location column, and click <OK>.

5. For Windows 98, Windows 98 SE, Windows Me applications, a message will confirm that the device driver software has been installed; click <Finish>.

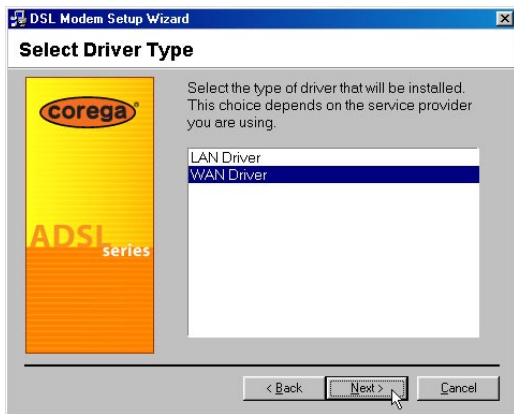
6. The "Welcome" window appears to start the next phase of the installation, and provides an opportunity to quit the setup process to exit all Windows programs before continuing. If the Windows programs were previously closed, click Next>.

*\* Note: If you quit this process, run setup.exe from the Device Driver Folder to resume the installation.*

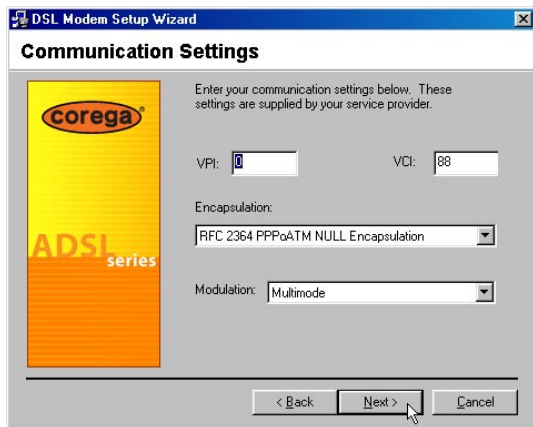
7. The "Select Service Provider" window allows you to specify your DSL service provider. A list of service providers is displayed. Default values are provided for each DSL service provider listed in the window.



- If your DSL service provider is listed and you would like to accept the default values, highlight the provider's name and click Next>. Continue with Step 9.
  - If your DSL service provider is listed and you would like to change the default values, highlight the provider's name and click <Customize>. Continue with Step a).
  - If your DSL service provider is not listed select Other Service Provider and click Next>. Continue with Step a).
- a) Select the type of driver to be installed from the "Select Driver Type" window and click Next>.

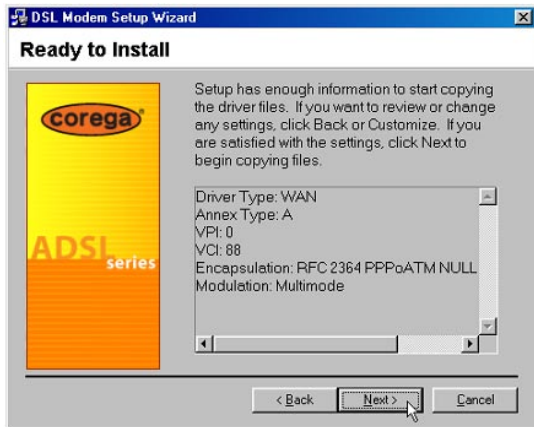


- b) Enter/Select the VPI, VCI, Encapsulation type and Modulation type from the "Communication Settings" window and click Next>.



*\* Note: The encapsulation types that appear in the drop-down list vary depending upon the type of driver selected in the previous step.*

9. The “Ready to Install” window will be displayed. You may review the current settings and click <Back to change the settings, or click Next> to accept the current settings.



10. A message will be displayed indicating that the drivers are being installed.

*\* Note: You may need the Windows CD to complete the installation.*

11. The system must be rebooted to have the new settings take effect, therefore the “Reboot” window will appear. Remove all disks from their drives, select <Yes>, reboot the computer now; and click <Close> to reboot.
12. Once the PC has rebooted, installation of corega DSLAAU is complete.

- a) Windows 98 WAN applications will ask you to provide telephone number and location information. Enter the information and click <Close>.
- b) The "Finished" window will be displayed indicating the installation has been completed. Click <Finish>.

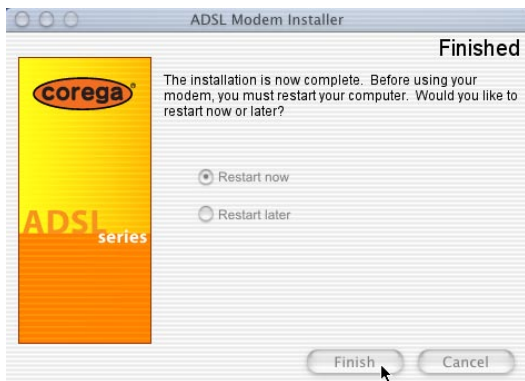
## 3.3 MAC OS 9.x Installation

When installing corega DSLAAU on a Macintosh running OS 9.x, you will need to install the drivers first, and then plug the USB cable from your modem to the computer.

### • Installing the Driver Software

1. In the procedure that follows, we shall refer to the folder where the driver files reside as the Device Driver Folder.
2. In the Device Driver Folder, locate the Installer application and invoke it by double-clicking on it.
3. The "Welcome" screen will appear. Click <Next> to proceed.
4. When all necessary files have been copied, the "Finished" screen will appear giving you the opportunity to restart your computer. Since you must restart your computer before using your modem, select <Restart now> (click inside the radio button to the left of it) and click <Finish>.





### 3.4 MAC OS X Installation

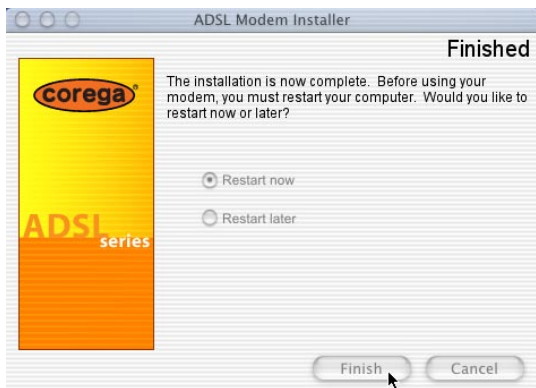
When installing corega DSLAAU on a Macintosh running OS X, you will need to install the drivers first, then plug the USB cable from your modem to the computer.

*\* Note: This device driver supports MAC OS X 10.1.x and above. It does not support MAC OS X 10.0.*

#### • Installing the Driver Software

1. In the procedure that follows, we shall refer to the folder where the driver files reside as the Device Driver Folder.
2. In the Device Driver Folder, locate the Installer application and invoke it by double-clicking on it.
3. The "Welcome" screen will appear; click <Next> to proceed.
4. Enter the administrator login and password on the "Authenticate" screen and click <OK>.
5. When all necessary files have been copied, the "Finished" screen will

appear giving you the opportunity to restart your computer. Since you must restart your computer before using your modem, select <Restart now> (click inside the radio button to the left of it) and click <Finish>.



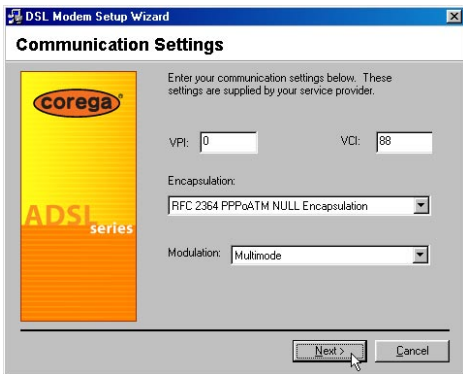
The driver is now installed. Before using your corega DSLAAU, connect the modem to the computer using the proper USB device cable and connect the DSL line to corega DSLAAU.

To configuration corega DSLAAU, consult "Appendix A: Modifying TCP/IP Networking Options." Instructions for the WAN driver and Instructions for the LAN driver (RFC 1483).

## 4.1 Accessing Communication Settings on Windows

Once corega DSLAAU and software have been installed, the communication settings may be easily updated by performing the following steps:

1. From your PC desktop click Start => Programs => Corega USB ADSL Modem => Configure.
2. The "Communication Settings" window will be displayed.



Make the necessary changes to the VPI, VCI, Encapsulation type and/or Modulation type and click Next>.

3. The system must be rebooted to have the new settings take effect, therefore the "Reboot" window will appear. Remove all disks from their drives, select <Yes>, reboot the computer now; and click <Close> to reboot.

## 4.2 Accessing Communication Settings on Mac

Access to corega DSLAAU's Communication Settings is not provided on the MAC OS.

## 5.1 Windows Drivers Update

Once corega DSLAAU has been installed, updating to a new version of the software is an easy process. Simply uninstall the existing drivers (See “Windows Uninstall” section), and then install the new drivers (See “Chapter 3: Software Installation” section).

*\* Note: Be sure to follow the instructions provided for the appropriate operating system for your application.*

## 5.2 MAC OS 9.x and OS X Drivers Update

In order to upgrade corega DSLAAU drivers on the Macintosh, simply uninstall the existing drivers (see “MAC OS 9.x Uninstall” or “MAC OS X Uninstall” section), and then install the new drivers (see the MAC OS installation instructions or the OS X installation instructions).

*\* Note: Be sure to follow the instructions provided for the appropriate operating system for your application.*

corega DSLAAU control panel program provides a quick and easy way to configure and check the performance of the modem and the ADSL connection. When open, the monitor window updates every 2 seconds.

## 6.1 Windows Uninstall

Remove corega DSLAAU software drivers by performing the following steps.

*\* Note: The USB cable should not be unplugged until you are prompted to do so.*

1. From your PC desktop click Start => Programs => Corega USB ADSL Modem => Uninstall.
2. A message will be displayed asking you to confirm the removal of corega DSLAAU software, click <Yes>.
3. You will be reminded not to unplug the USB cable until the uninstall process has been completed. Click <OK>.
4. A message will be displayed indicating the software is being removed.
5. You will be prompted to unplug your modem. Unplug the USB cable from the PC and click <OK>.
6. The "Reboot" window will appear. Remove all disks from their drives, select <Yes>, reboot the computer now; and click <Close> to reboot.

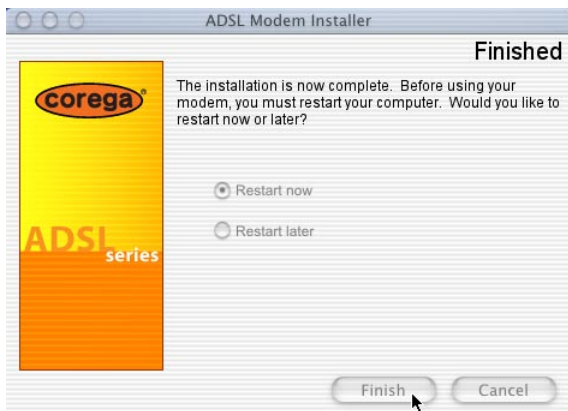
*\* Note: The USB cable must be unplugged before the system is rebooted.*

## 6.2 MAC OS 9.x Uninstall

1. Invoke the Uninstaller from corega DSLAAU folder (Applications => Corega USB ADSL Modem => Uninstall).
2. The "Uninstall" screen will appear. Select <Yes>, remove the software from my computer and click <Next>.
3. The "Removing Software" screen will indicate that files are being removed.

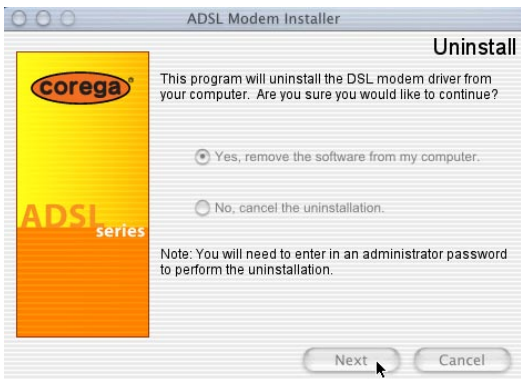
do so. Unplug the cable and click <OK>.

5. The "Finish" screen will appear. The computer must be restarted to complete the uninstall process. Select <Restart now> and click <Finish>.

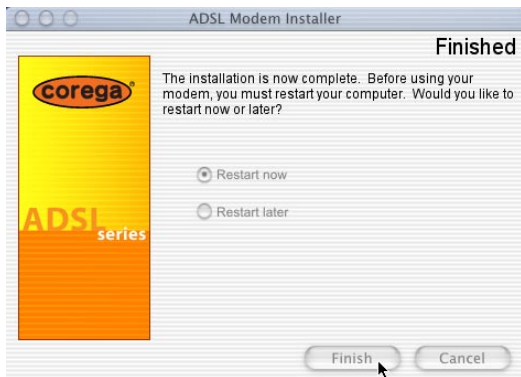


## 6.3 MAC OS X Uninstall

1. Invoke the Uninstaller from corega DSLAAU folder (Go => Applications => Corega USB ADSL Modem => Uninstall).
2. The "Uninstall" screen will appear. Select <Yes>, remove the software from my computer and click <Next>.



3. Type the administrator name and password at the "Authenticate" screen and click <OK>.
4. The "Finish" screen will appear. The computer must be restarted to complete the uninstall process. Select Restart now and click <Finish>.



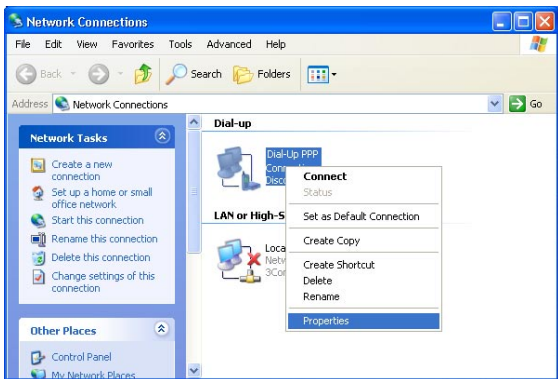
## Modifying TCP/IP Networking Options

### • WAN USB Driver

#### *Microsoft Windows XP*

TCP/IP settings are set up automatically during the software installation process. The following procedure may be used to change TCP/IP settings, if necessary.

1. From your PC desktop, open the “Control Panel” window (Start => Control Panel). Double click the <Network Connections> icon.
2. From the “Network Connections” window, right click the <Dial-Up PPP Connection> icon and click <Properties>.

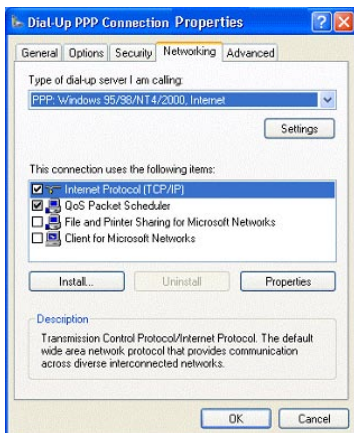


3. The “General” tab of the “Dial-Up PPP Connection Properties” window allows you to specify a different VPI and VCI, if needed. Contact your DSL service provider before altering this connection information. Enter the VPI and VCI in the Phone Number field (For example: 0,88).

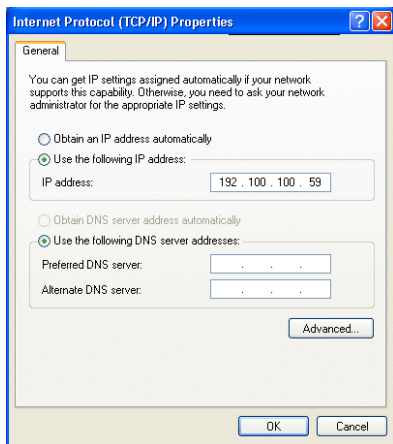




4. From the “Networking” tab of the “Dial-Up PPP Connection Properties” window, select Internet Protocol (TCP/IP) and click <Properties>.



5. Use the “Internet Protocol (TCP/IP) Properties” window to modify the IP address and DNS Server addresses as follows:



- Change the IP address to a user defined address by selecting Use the following IP address (click inside the radio button to the left of it) and typing the address in the space provided
  - Change the DNS Server addresses to user defined addresses by selecting Use the following DNS server addresses (click inside the radio button to the left of it) and typing the addresses in the spaces provided.
  - The “Advanced” button of the “Internet Protocol (TCP/IP) Properties” window may be used to alter DNS addresses, WINS addresses and IP security settings.
6. Click <OK> to apply your changes and exit from the “Internet Protocol (TCP/IP) Properties” window.
7. The “Dial-Up PPP Connection Properties” window will reappear. Click <OK> to end the TCP/IP options modification session.

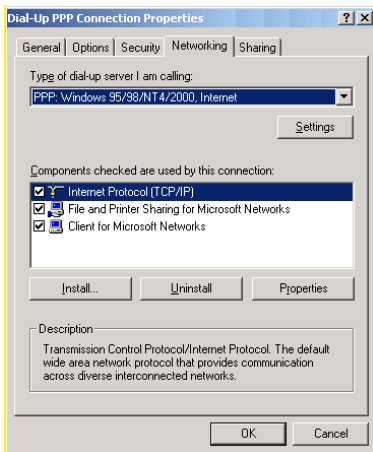
## Microsoft Windows 2000

TCP/IP settings are set up automatically during the software installation process. The following procedure may be used to change TCP/IP settings, if necessary.

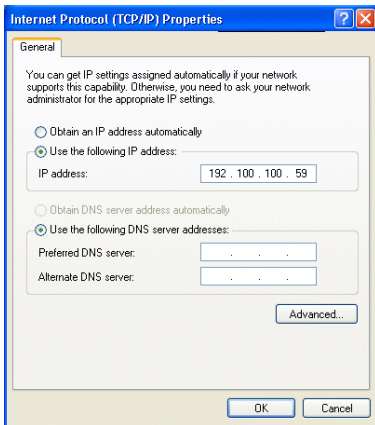
1. From your PC desktop, open the "Control Panel" window (Start => Settings => Control Panel). Double click the <Network and Dial-Up Connections> icon.
2. From the "Network and Dial-Up Connections" window, right click the <Dial-Up PPP Connection> icon and click <Properties>.
3. The "General" tab of the "Dial-Up PPP Connection Properties" window allows you to specify a different VPI and VCI, if needed. Contact your DSL service provider before altering this connection information. Enter the VPI and VCI in the Phone Number field (For example: 0,88).



4. From the "Networking" tab of the "Dial-Up PPP Connection Properties" window, select <Internet Protocol (TCP/IP)> and click <Properties>.



5. Use the "Internet Protocol (TCP/IP) Properties" window to modify the IP address and DNS Server addresses as follows:

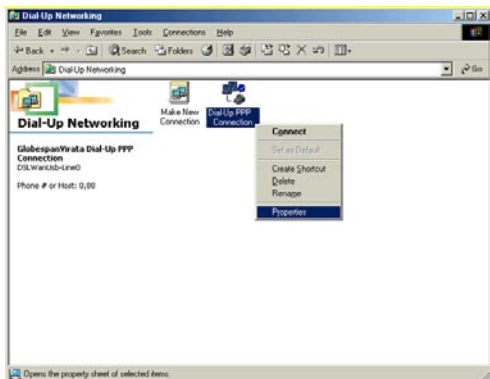


- Change the IP address to a user defined address by selecting Use the following IP address (click inside the circle to the left of it) and typing the address in the space provided
  - Change the DNS Server addresses to user defined addresses by selecting Use the following DNS server addresses (click inside the circle to the left of it) and typing the addresses in the spaces provided.
  - The “Advanced” button of the “Internet Protocol (TCP/IP) Properties” window may be used to alter DNS addresses, WINS addresses and IP security settings.
6. Click <OK> to apply your changes and exit from the “Internet Protocol (TCP/IP) Properties” window.
  7. The “Dial-Up PPP Connection Properties” window will reappear. Click <OK> to end the modifying TCP/IP options session.

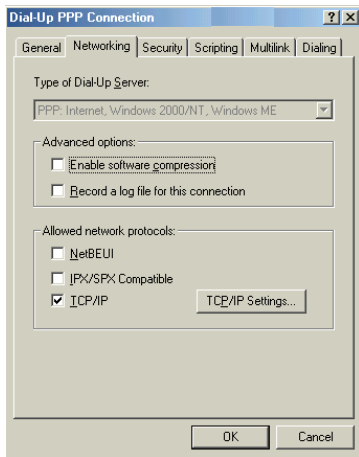
## ***Microsoft Windows Me***

TCP/IP settings are automatically set up during the software installation process. The following procedure may be used to change TCP/IP settings, if necessary.

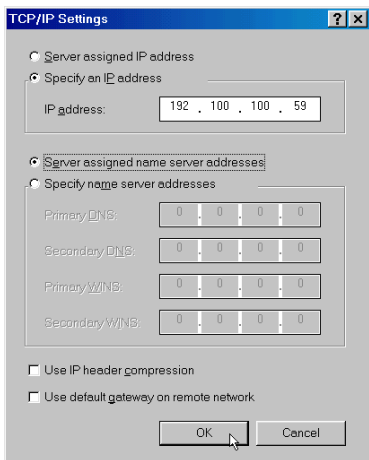
1. From your PC desktop, open the Dial-Up Networking window (Start => Settings => Dial-Up Networking).
2. From the “Dial-Up Networking” window, right click on the <Dial-Up PPP Connection> icon and click <Properties>.



3. From the "Networking" tab of the "Dial-Up PPP Connection" window, select TCP/IP (marked with a check in the check-box to the left) and click <TCP/IP Settings>.



4. Use the "TCP/IP Settings" window to modify the IP address, Name Server addresses and/or default gateway as follows:

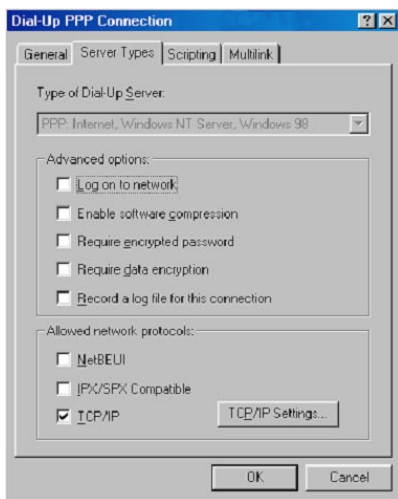


- Change the IP address to a user defined address by selecting Specify an IP address (click inside the circle to the left of it) and typing the address in the space provided.
  - Change the Name Server addresses to user defined addresses by selecting Specify name server addresses (click inside the circle to the left of it) and typing the addresses in the spaces provided.
  - Change the default gateway by leaving the box blank to the left of Use default gateway on remote network.
5. Click <OK> to apply your changes and exit from the "TCP/IP Settings" window.
6. The "Dial-Up PPP Connection" window will be redisplayed. Click <OK> to end the modifying TCP/IP options session.

## Microsoft Windows 98 and Windows 98 SE

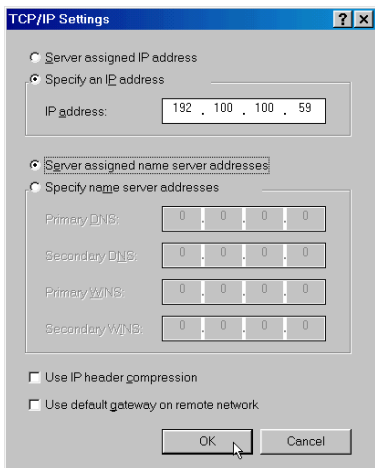
TCP/IP settings are set up automatically during the software installation process. The following procedure may be used to change TCP/IP settings, if necessary.

1. From your PC desktop, open the "Control Panel" window (Start => Settings => Control Panel). Double click the <Dial-Up Networking> icon.
2. From the "Dial-Up Networking" window, right click on the <Dial-Up PPP Connection> icon and click <Properties>.
3. From the "Server Types" tab of the "Dial-Up PPP Connection" window, select TCP/IP by checking the check to the left, and click <TCP/IP Settings...>.



4. Use the "TCP/IP Settings" window to modify the IP address, Name Server addresses and/or default gateway as follows:






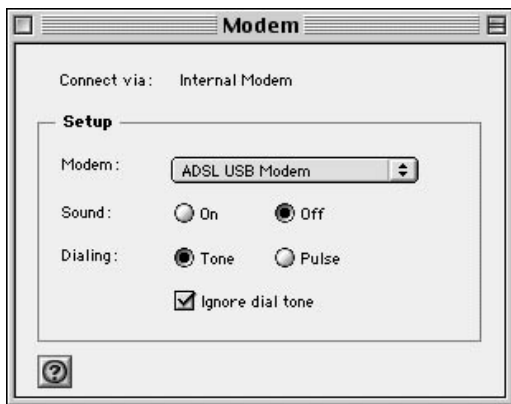
- Change the IP address to a user defined address by selecting Specify an IP address (click inside the radio button to the left of it) and typing the address in the space provided
  - Change the Name Server addresses to user defined addresses by selecting Specify name server addresses (click inside the circle to the left of it) and typing the addresses in the spaces provided
  - Change the default gateway by leaving the box blank to the left of Use default gateway on remote network.
5. Click <OK> to apply your changes and exit from the “TCP/IP Settings” window.
  6. The “Dial-Up PPP Connection” window will be redisplayed. Click <OK> to end the TCP/IP options modification session.


## MAC OS 9.x

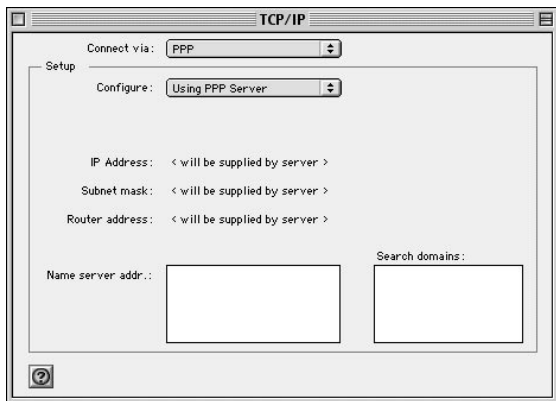
If you have not done so yet, connect corega DSLAAU to the computer using the proper USB device cable. Connect the DSL line to corega DSLAAU, too.


TCP/IP settings are set up automatically during the software installation process. The following procedure may be used to change TCP/IP settings, if necessary.

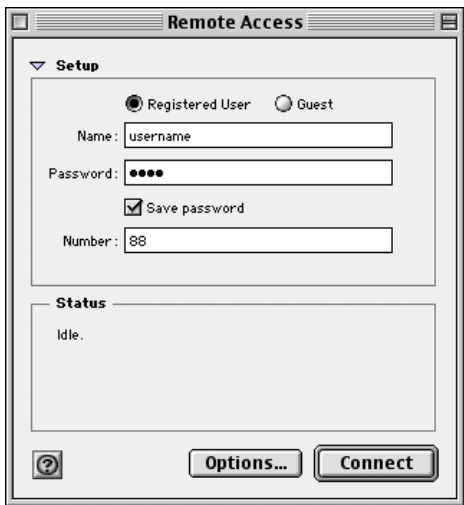
1. Click on the Apple icon (  ), then select Control Panels => Modem
2. Make sure that the ADSL USB Modem appears in the Modem: drop-down list. You can modify the dialup settings such as dialing sound and type.



3. Close the "Modem" window (click on the top left corner). You will be prompted to save the current configuration. Click <Save>.
4. Next, click again on the Apple icon (  ), and then select Control Panels => TCP/IP.
5. The "TCP/IP" window will appear.



- Make sure that PPP is selected in the Connect via: drop-down list.
  - The Configure: drop-down list should show Using DHCP Server.
6. Close the "TCP/IP" window. You will be prompted to save the current configuration. Click <Save>.
  7. Click on the Apple icon (  ), and then select Control Panels => Remote Access.
  8. The "Remote Access" window lets you set up the remote login parameters.



*\* Note: If you do not see the Name and Password fields, click on the small triangle to the left of the word Setup.*

- Enter your userid in the Name field.
- Type in your password in the Password field.
- Choose whether or not to have your password saved by checking or unchecking the Save Password check box.
- Enter any number in the Number field.
- You may wish to use the Options button to set up some additional connection and protocol settings, or accept the default. Click <OK> when done with the "Options" window.

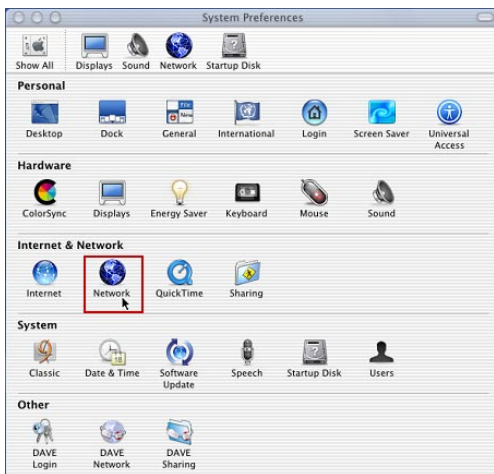
9. Close the "Remote Access" window. You will be prompted to save the current configuration. Click <Save>.

## MAC OS X

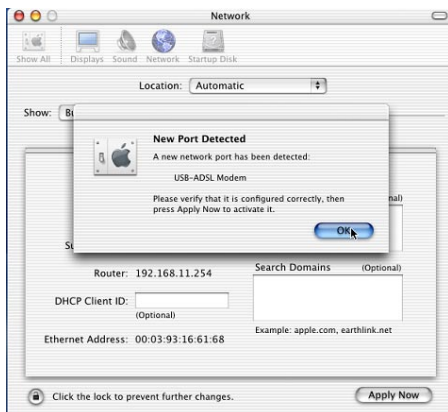
If you have not done so yet, connect corega DSLAAU to the computer using the proper USB device cable. Connect the DSL line to corega DSLAAU, too.

TCP/IP settings are set up automatically during the software installation process. The following procedure may be used to change TCP/IP settings, if necessary.

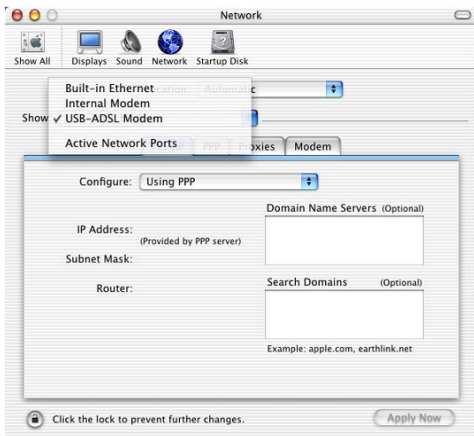
1. Open System Preferences and select Network.



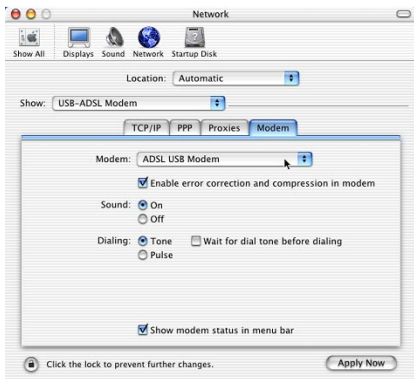
2. A window should pop up indicating that a new port has been detected. It will be named corega DSLAAU. Click <OK>.



- From the Show pull down menu, select the new port, USB-ADSL Modem.



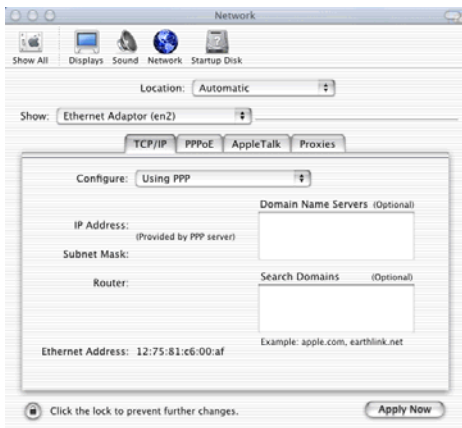
- Select the <Modem> tab. In the Modem pull down menu, select ADSL USB Modem. Uncheck Wait for dial tone before dialing. Check Show Modem Status in menu bar.



- Select the <PPP> tab. Enter your username (account name). If you want to make your password permanently saved, enter it and check Save password. Configure any other PPP Options as desired.




6. Select the <TCP/IP> tab and select the way you would like to obtain your IP address. The recommended way is Configure Using PPP.

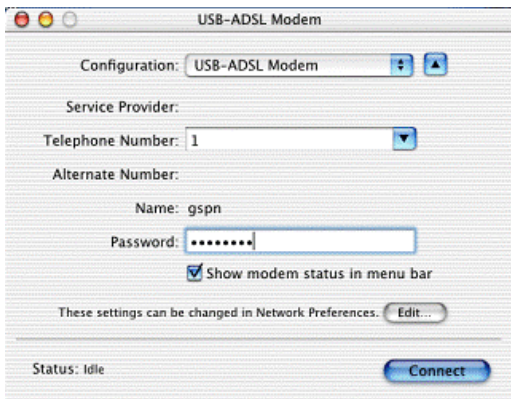


7. Click <Apply Now>. Close the System Preferences application. The installation and configuration is now complete.

## • Establishing a Connection

1. Open the Internet Connection application (which looks like a modem dialer) by clicking the  icon at the top right side of the screen and selecting Open Internet Connection from the menu.
2. In the Configuration drop down menu, select your adapter's port USB-ADSL Modem and fill in the password if it was not provided in Step 5 above and click <Connect>.





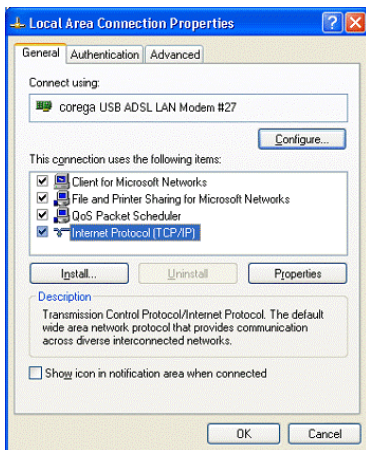
3. The Internet Connection application will display the progress of the connection. Upon completion, you will be connected to the Internet. The Disconnect button may be used to remove the connection, effectively disconnecting from the Internet.

## • LAN USB Driver

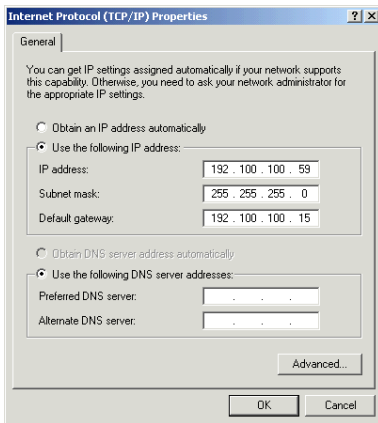
### ***Microsoft Windows XP***

TCP/IP settings are automatically set up during the software installation process. The following procedure may be used to change TCP/IP settings, if necessary.

1. From your PC desktop, open the "Control Panel" window (Start => Control Panel). Double click the <Network Connections> icon.
2. Double click the <Local Area Connection> icon from the "Network Connections" window.
3. Select Internet Protocol (TCP/IP) from the "General" tab of the "Local Area Connection Properties" window. Click <Properties>.



4. The "Internet Protocol (TCP/IP) Properties" window is used to modify the IP addresses and DNS Server addresses as follows:

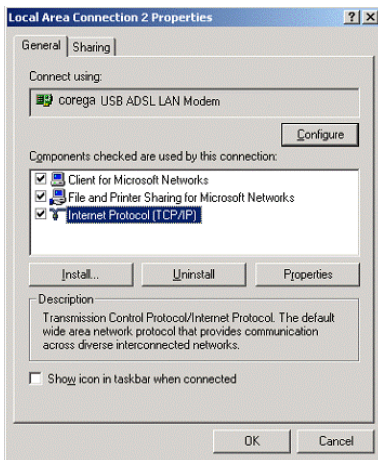


- Change the IP address to a user defined address by selecting Use the following IP address option (click inside the circle to the left of it) and typing the addresses in the spaces provided
  - Change the DNS Server addresses to user defined addresses by selecting Use the following DNS server addresses (click inside the circle to the left of it) and typing the addresses in the spaces provided.
  - The Advanced button of the “Internet Protocol (TCP/IP) Properties” window may be used to alter IP settings, DNS server addresses, WINS addresses, IP security options, and TCP/IP filtering options.
5. Click <OK> to apply your changes and exit from the “Internet Protocol (TCP/IP) Properties” window.
  6. The “Local Area Connection Properties” window will reappear. Click <OK> to end the TCP/IP options modification session.

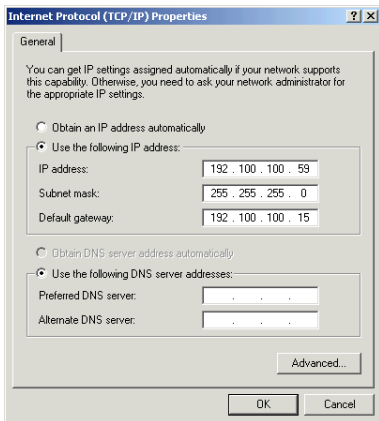
## **Microsoft Windows 2000**

TCP/IP settings are automatically set up during the software installation process. The following procedure may be used to change TCP/IP settings, if necessary.

1. From your PC desktop, open the “Control Panel” window (Start => Settings => Control Panel). Double click the <Network and Dial-Up Connections> icon.
2. Double click the <Local Area Connection> icon from the “Network and Dial-Up Connections” window.
3. Select Internet Protocol (TCP/IP) from the “General” tab of the “Local Area Connection Properties” window. Click <Properties>.



4. Use the “Internet Protocol (TCP/IP) Properties” window to modify the IP addresses and DNS Server addresses as follows:

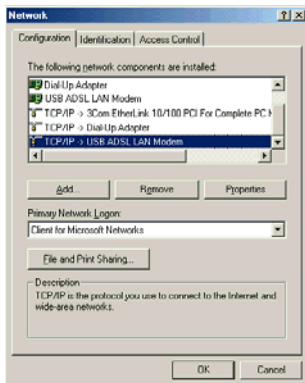


- Change the IP address to a user defined address by selecting Use the following IP address option (click inside the circle to the left of it) and typing the addresses in the spaces provided
  - Change the DNS Server addresses to user defined addresses by selecting Use the following DNS server addresses (click inside the circle to the left of it) and typing the addresses in the spaces provided.
  - The Advanced button of the “Internet Protocol (TCP/IP) Properties” window may be used to alter IP settings, DNS server addresses, WINS addresses, IP security options, and TCP/IP filtering options.
5. Click <OK> to apply your changes and exit from the “Internet Protocol (TCP/IP) Properties” window.
  6. The “Local Area Connection Properties” window will reappear. Click <OK> to end the TCP/IP options modification session.

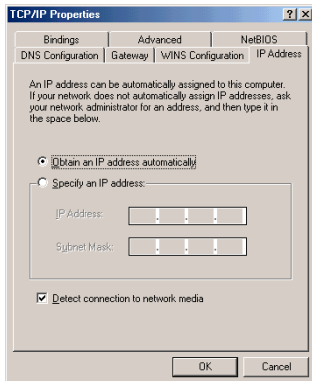
### ***Microsoft Windows Me***

TCP/IP settings are automatically set up during the software installation process. The following procedure may be used to change TCP/IP settings, if necessary.

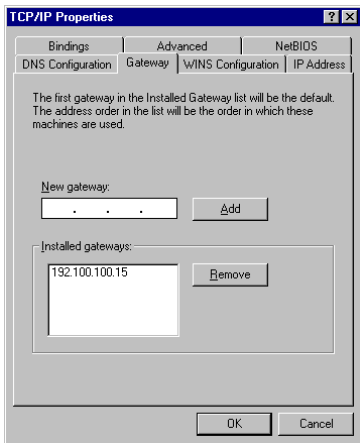
1. From your PC desktop, open the “Control Panel” window (Start => Settings => Control Panel). Double click on the Network icon.
2. Select TCP/IP => USB ADSL LAN Modem from the “Configuration” tab of the “Network” window. Click <Properties>.



3. From the "IP Address" tab of the "TCP/IP Properties" window, select either the Obtain an IP address Automatically or Specify an IP Address option, depending on your network setup. If you select Specify an IP address, type the IP Address and Subnet Mask in the spaces provided. Consult with your network administrator to determine which option best suits your individual needs.



4. The “Gateway” tab allows you to add or remove gateways. Consult with your network administrator to determine the appropriate addresses for your individual needs.

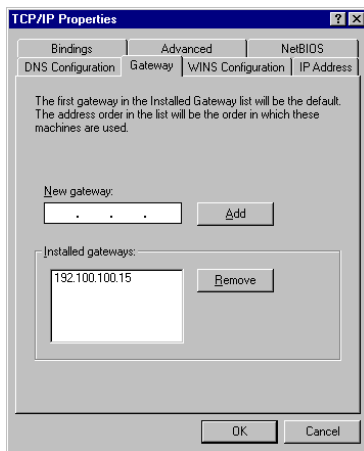


- To add a new gateway, type the address in the New gateway field and click <Add>. The new gateway will appear in the Installed gateways list.
  - To remove a previously installed gateway, highlight the entry to be removed in the Installed gateways list and click <Remove>. The gateway will no longer appear in the Installed gateways list.
5. Click <OK> to apply your changes and exit from the “TCP/IP Properties” window.
  6. The “Network” window will reappear. Click <OK> to end the TCP/IP options modification session.
  7. If you have made changes to TCP/IP properties, you will be asked to restart/reboot your PC. Click <Yes>, and your PC will restart.

## Microsoft Windows 98 and Windows 98 SE

TCP/IP settings are set up during the software installation process. The following procedure may be used to change TCP/IP settings, if necessary.

1. From your PC desktop, open the "Control Panel" window (Start => Settings => Control Panel). Double click the <Network> icon.
2. Highlight TCP/IP -> corega DSLAAU from the list of installed network components in the "Configuration" tab of the "Network" window; click <Properties>.
3. From the "IP Address" tab of the "TCP/IP Properties" window, select either the Obtain an IP address Automatically or Specify an IP Address option, depending on your network setup. If you select Specify an IP address, type the IP Address and Subnet Mask in the spaces provided. Consult with your network administrator to determine which option best suits your individual needs.
4. The "Gateway" tab allows you to add or remove gateways. Consult with your network administrator to determine the appropriate addresses for your individual needs.






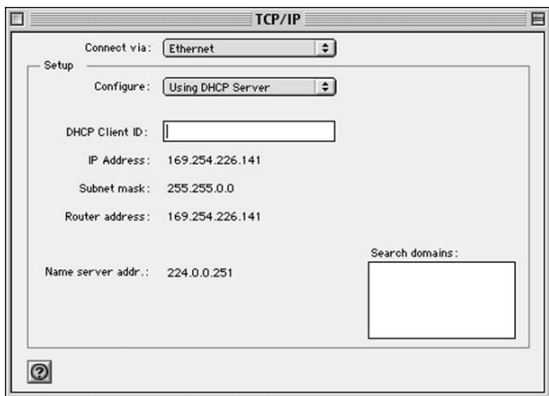
- To add a new gateway, type the address in the New gateway field and click <Add>. The new gateway will appear in the Installed gateways list.
  - To remove a previously installed gateway, highlight the entry to be removed in the Installed gateways list and click <Remove>. The gateway will no longer appear in the Installed gateways list.
5. Click <OK> to apply your changes and exit from the "TCP/IP Properties" window.
  6. The "Network" window will reappear. Click <OK> to end the TCP/IP options modification session.
  7. If you have made changes to TCP/IP properties, you will be asked to restart/reboot your PC. Click <Yes>, and your PC will restart.

## **MAC OS 9.x**

If you have not done so yet, connect corega DSLAAU to the computer using the proper USB device cable. Connect the DSL line to corega DSLAAU, too.

TCP/IP settings are set up automatically during the software installation process. The following procedure may be used to change TCP/IP settings, if necessary.

1. Click on the Apple icon (  ), and then select Control Panels => TCP/IP.
2. The "TCP/IP" window will appear.



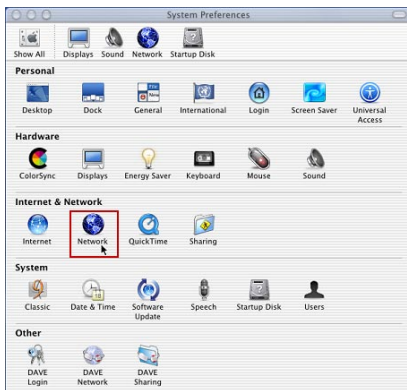
- Make sure that Ethernet is selected in the Connect via: drop-down list.
  - The Configure: drop-down list should show Using DHCP Server.
3. Close the “TCP/IP” window. You will be prompted to save the current configuration. Click <Save>.

## **MAC OS X**

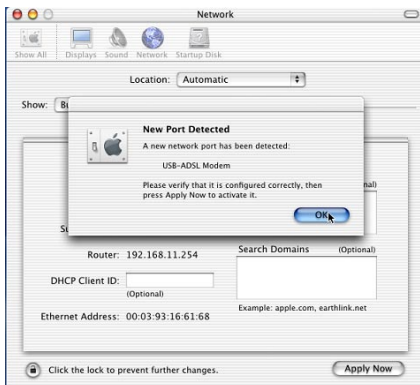
If you have not done so yet, connect corega DSLAAU to the computer using the proper USB device cable. Connect the DSL line to corega DSLAAU, too.

TCP/IP settings are set up automatically during the software installation process. The following procedure may be used to change TCP/IP settings, if necessary.

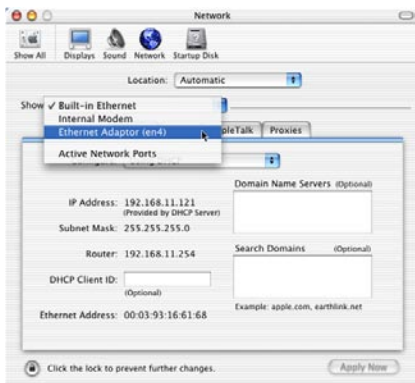
1. Open System Preferences and select Network.



2. A window should pop up indicating that a new port has been detected. It will be a port of type "Ethernet Adapter" and its interface name "en(2)" will be displayed as well, e.g., "Ethernet Adapter en<n>." Click <OK>.



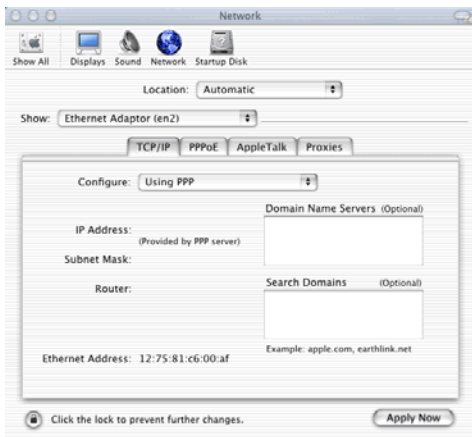
3. From the Show pull down menu, select the new port, Ethernet Adapter en<n>.



4. The next steps apply if you want to configure using PPPoE (RFC 2516).
5. Select the PPPoE tab and select Connect using PPPoE.




6. Select the TCP/IP tab and select the way you would like to obtain your IP address. The recommended way is Configure Using PPP.



7. If indicated by your ISP, enter any proxies needed at the Proxies tab.
8. Click <Apply Now> to apply the changes. Close the System Preferences application. The installation and configuration is now complete.

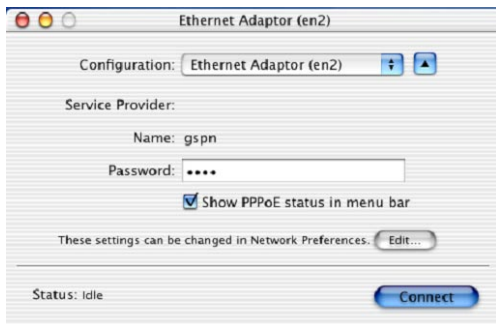
## • Establishing a Connection

1. Open the Internet Connection application (which looks like a modem dialer) by clicking the  icon at the top right side of the screen and selecting Open Internet Connection from the menu.



2. In the Configuration drop down menu, select your adapter's port Ethernet Adaptor en(2) and fill in the password if it was not

provided in Step 5 above; click <Connect>.



3. The Internet Connection application will display the progress of the connection. Upon completion, you will be connected to the Internet. The Disconnect button may be used to remove the connection, effectively disconnecting from the Internet.



## Point-to-Point Protocol over Ethernet

PPPoE (Point-to-Point Protocol over Ethernet) is a specification for connecting multiple computer users on an Ethernet to a remote site through common customer premises equipment. PPPoE can be used to have an office or building-full of users share a common DSL (Digital Subscriber Line) connection to the Internet. PPPoE combines the Point-to-Point Protocol commonly used in dialup connections, with the Ethernet protocol, which supports multiple users in a local area network. The PPP Protocol information is encapsulated within an Ethernet frame.

corega DSLAAU supports PPPoE for WAN and LAN applications, as presented in this section.

### • PPPoE for WAN Applications

PPPoE support is embedded into the WAN driver making the modem appear as a dial-up modem to the operating system. Dial-Up Networking is used to establish a connection.

Follow the installation instructions provided in this manual when implementing PPPoE with the WAN driver.

### • PPPoE for LAN Applications

PPPoE is supported via third party software when implemented with a LAN driver, making the modem appear as a local area network (LAN) device to the operating system. It allows multiple computer users on an Ethernet to share a common DSL connection to the Internet.

After installing the LAN driver, follow the installation instructions

provided with the third party PPPoE software. The third party software will search for existing drivers. If multiple drivers are installed, select corega DSLAAU as the adapter of choice.

Internet connection will be made through the third party software. You will be required to enter your User Name and Password.



## Specifications

### • corega DSLAAU Connector

corega DSLAAU is connected to your PC via a USB cable. The rectangular end of the USB cable inserts into the USB port of your PC while the square end of the cable inserts into the USB port of corega DSLAAU.

### • Data Transfer Rates

#### ***ANSI T1.413 / ITU G.992.1 Data Rates***

Data rates for DMT mode are partitioned at 32 kb/s increments for both the upstream and downstream data rates adhering to the DMT Standards. The downstream data rates extend from 32 kb/s to 8.064 Mb/s. The upstream data rates extend from 32 kb/s to 1024 kb/s.

*Table 1: ANSI T1.413 Payload Bit Rates*

| Bit Rate (kb/s) |     |      |
|-----------------|-----|------|
|                 | Min | Max  |
| Downstream      | 32  | 8064 |
| Upstream        | 32  | 1024 |

#### ***ITU G.992.2 Data Rates***

Data rates for G.992.2 (G.lite) mode are likewise partitioned at 32kb/s increments. The downstream data rates extend from 64 kb/s to 4 Mb/s. The upstream data rates extend from 32 kb/s to 1024 kb/s.

Table 2: G.992.2 Payload Bit Rates

| Bit Rate (kb/s) |     |      |
|-----------------|-----|------|
|                 | Min | Max  |
| Downstream      | 64  | 4000 |
| Upstream        | 32  | 1024 |

## • Power Requirements

### ***Typical Power Consumption***

Table 5: CP USB Modem Power Consumption

| CP USB Modem Power Consumption |           |
|--------------------------------|-----------|
| Power Supply                   | Data Mode |
| +5V Digital                    | 0.100 W   |
| +5V Analog                     | 0.250 W   |
| +3.3V                          | 0.995 W   |
| +12V                           | 0.896 W   |
| Total:                         | 2.241 W   |

## • System Requirements

### ***Windows Operating Systems***

- Windows 98, Windows 98SE, Windows ME, Windows 2000, or Windows XP
- 32 MB RAM
- Pentium-class processor (200MHz or better)
- 1 Universal Serial Bus (USB) port
- 10 MB free HD space

## ***MAC Operating System***

- MAC OS 9.x, OS X (10.1.x and above; 10.0 is not supported)
- Requires Macintosh USB driver version 1.2 or greater
- Supports iMac/iBook (G3/G4), PowerMac/PowerBook (G3/G4)

## ***Linux Operating System***

- 32 MB RAM
- Pentium-class processor (200 MHz or better)
- 1 Universal Serial Bus (USB) port
- 10 MB free HD space

## **• Hardware Requirements**

### ***Processor***

Intel-compatible 80486 or higher, including Pentium and Pentium Pro.

corega K.K. designs, develops and markets professional networking products that address the specific needs of small and medium enterprises and home user's easy-to-use, quality and reliable services of networking solutions requirements.

Established in 1986, corega 100% founded by Allied Tel-esis Group in Yokohama, Japan. corega's core products consists of 10/100/1000 Ethernet products, Wireless Networking Products(802.11 a/b/g series), broadband access routers and other networking peripheral, such as IP camera and PoE Adapter.

Thank you again for purchasing corega DSLAAU USB ADSL Modem, Wish you would enjoy the powerful and friendly corega connecting experience!!





[www.corega.com.tw](http://www.corega.com.tw)

**corega Taiwan Inc.**

7F., No. 10, Lane 345, YangGuang St. Nei-Hu  
Chiu, Taipei City 114, Taiwan R.O.C.  
TEL: +886-2-8751-9164 FAX: +886-2-8751-9174

## Free Manuals Download Website

<http://myh66.com>

<http://usermanuals.us>

<http://www.somanuals.com>

<http://www.4manuals.cc>

<http://www.manual-lib.com>

<http://www.404manual.com>

<http://www.luxmanual.com>

<http://aubethermostatmanual.com>

Golf course search by state

<http://golfingnear.com>

Email search by domain

<http://emailbydomain.com>

Auto manuals search

<http://auto.somanuals.com>

TV manuals search

<http://tv.somanuals.com>