

WLUSB2GO

54M Wireless USB Adapter



corega[®]

User Manual

1. Preface.....	2
1.1 Features.....	2
1.2 Packing Content.....	2
1.3 Hardware description.....	3
1.4 Installation Steps.....	3
2. Software Installation.....	4
2.1 Hardware Installation.....	4
2.2 Utility and Driver Installation	5
2.3 Verify the Hardware Status.....	7
3. Setting TCP/IP.....	9
4. Setting Wireless Network.....	10
5. Network Security Setting.....	12
5.1 Setting WEP.....	12
5.2 Setting WPA.....	14
《WPA-PSK and WPA2-PSK》	14
《WPA and WPA2》	15
6. Utility Introduction.....	17
6.1 Site Survey.....	17
6.1.1 Add one profile	18
6.2 Profile.....	19
6.3 Link Status.....	20
6.4 Statistics.....	21
6.5 Advanced settings.....	21
6.6 IP Information.....	23
6.7 About tab.....	23
7. FAQ.....	24
8. Specification.....	27

corega CG-WLUSB2GO 54M Wireless USB Adapter complies with IEEE802.11b/g standards. Its 2.0 USB interface is suitable for any computer with USB port. Its unique bearing cap design makes the cap less impossible to get lost. Moreover, CG-WLUSB2GO provides wide transmission range, high quality and stable transmission. These above features make it a great companion for NB & desktop users.

1.1 Features

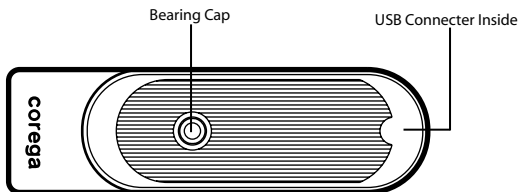
- Complies with IEEE802.11b/g standard.
- USB 2.0/1.1 Interface
- With wireless coverage up to 375m. Coverage radius is six times wider than general 802.11g products. (Environmental factors may adversely affect wireless signal range.)
- Support TX-Burst technology. Can effectively improve transmit speed when working with corega WLBAR GMO or corega WLBAR GO.
- Supports WEP 64/128 bit, WPA/WPA2, 802.1x network security modes.
- Supports roaming function, can automatically search for stronger signal wireless AP.
- Supports power save mode, spending less power.

1.2 Package Content

Before installation, please make sure the packing content is completed. If there is something loss please contact your local distributor.

- 54M Wireless USB Adapter
- CD-ROM
- User Manual

1.3 Hardware description



1.4 Installation Steps

Please confirm the following steps before installing the product.

- Plug the product into the USB port
- Put the Driver CD
- Install the utility program and the driver
- Confirm the Device status of the product
- Set up TCP/IP
- Open the Utility Program
- Setup the Wireless Network
- Enable the security function
- Setup the advanced functions
- Start to use the product.

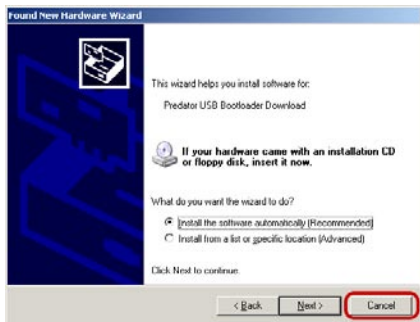
2.1 Hardware Installation

Please plug corega WLUSB2GO into the USB port. After you plug it in, please install the software and driver. When the following pages appear, please click [cancel].

<Windows XP>



<Windows 2000>

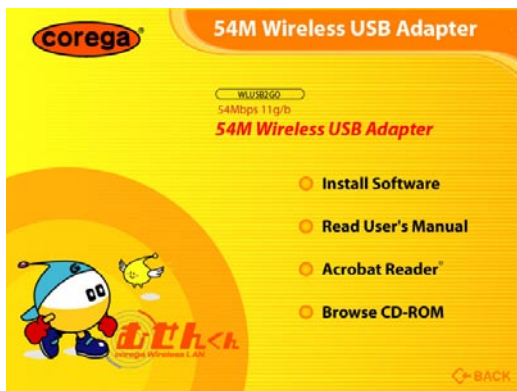


2.2 Utility and Driver Installation

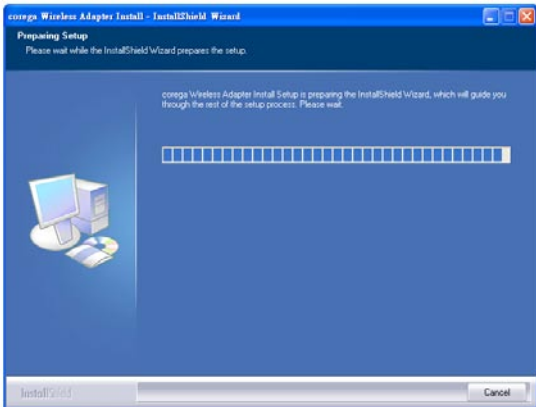
1. Put Driver CD into the CD-ROM drive.
2. Please select [English]



3. Click [Install Software]



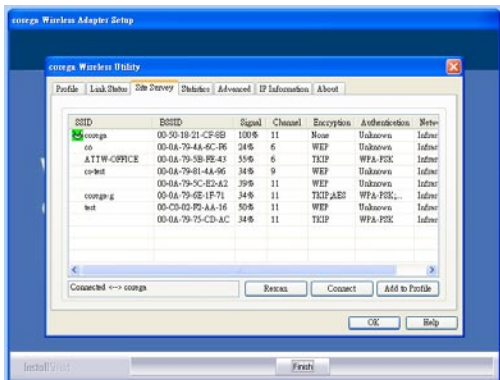
4. The [corega Wireless Adapter Setup] page.



5. Click [Continue Anyway].

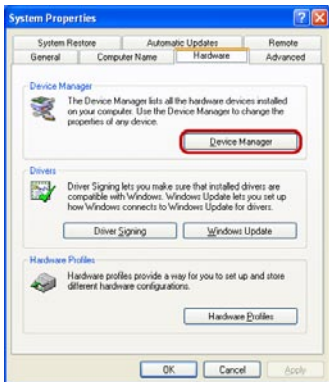


6. Click [Finish] to finish setup.

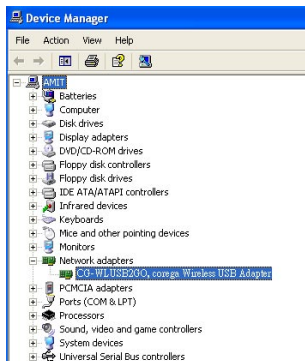


2.3 Verify the Hardware Status

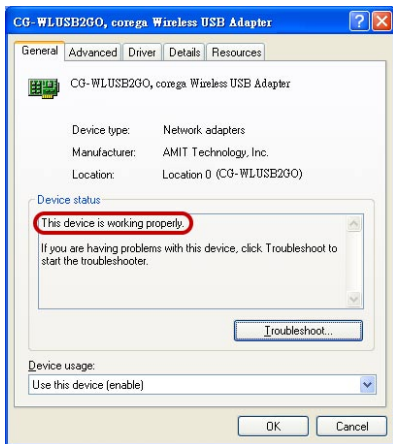
1. Open [Control Panel]=>Double-click [System].
2. Select [Hardware] tab=>Click [Device Manager].



3. Select and double-click [CG-WLUSB2GO].



4. Verify that the device status of CG-WLUSB2GO is [This device is working properly]->Click [OK] to close this page.



The following example is for Windows XP OS users:

1. Enter [Start Menu]=>select [Control panel]=>select [Network].
2. Right-click [Wireless Network](Windows 2000 users please select [Local Area Connection]) icon=>select [properties] °
3. Select [Internet Protocol(TCP/IP)]=>Click [Properties].



4. Select the [General] tab.

- a. If your Wireless Router has [DHCP] function, please select both [Obtain an IP address automatically] and [Obtain DNS server address automatically].
- b. If the router does not support [DHCP] function, you have to configure the IP and DNS settings.




User can use corega Wireless Utility to configure wireless network. After finishing configuration, please check if the connection works.

Please confirm that user's computer is in the wireless radio wave range. If the computer is out of the radio range, the setup will not be successful.

After user installed CG-WLUSB2GO and corega Wireless Utility, CG-WLUSB2GO will automatically link with the AP/Router. If the connection is successful, the following message will appear .

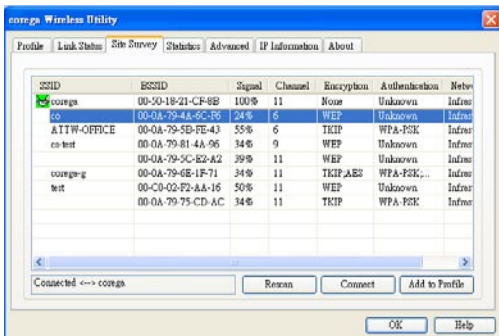



Wireless Adapter
Status : Good (corega)

1. Click the  icon in the system tray to open the Utility. If there is no such icon, enter [Start]->click[Program]->select[CG-WLUSB2GO]->click[corega Wireless Utility] and the icon will appear.

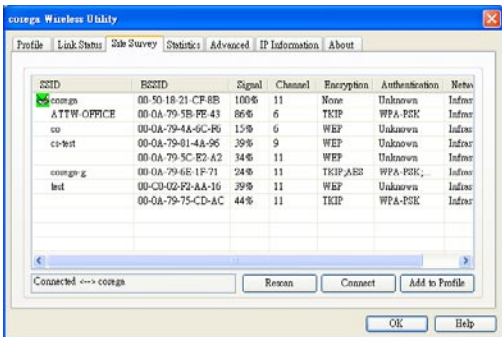


2. The available APs are displayed in the [Site Survey] tab. If there is no AP in dialog box, please press [Rescan] .




3. To make connection, select one AP/SSID (eg:corega) and click [Connect]. When the connection works, [Connected] will appear in the left button of this tab and the  icon appears in front of the linked AP. When the connection failed, [Disconnected] will appear.

If the AP has set up the encryption, please setup the the same keys on CG-WLUSB2GO (refer to chapter 5) before you click [OK].



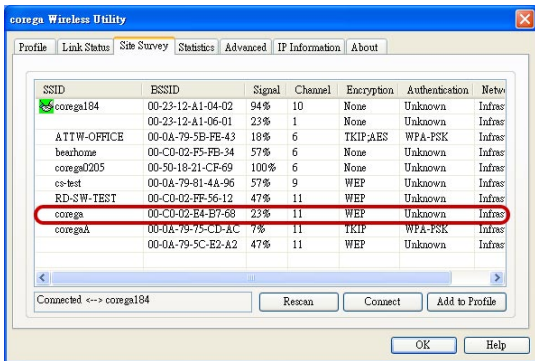
If your AP/Router have set network security function, your wireless adapter needs to have the same security setting. The details of network security setting are described below. Please open corega Wireless Utility before you start to setup network security:

Double click the  icon in the system tray to open the Utility page. If there is no wireless icon, please click [start Menu]->select [Programs]->click [CG-WLUSB2GO]->click [corega Wireless Utility], and the wireless icon will appear.

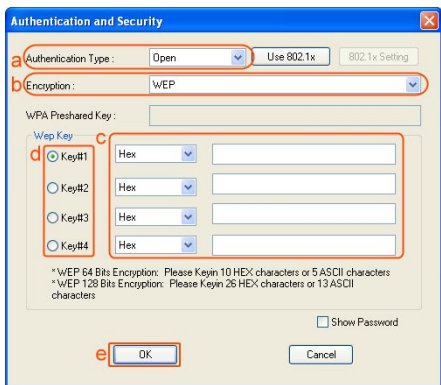


5.1 Setting WEP

1. If your AP has [WEP] authentication(eg:corega), press [Connect].



2. Please follow the instructions:



a. [Authentication Type]: indicates the authentication type of the AP/Router. Please confirm the setting of the AP/Router.

* [Open]: WEP open system is based on request and grant. It is essentially no authentication.

* [Shared]: WEP shared key is based on request, challenge, challenge response, grant/deny.

b. Select [WEP] in [Encryption].

c. Enter AP encryption keys(64/128bits) in the box Key1~Key4. Please accept the auto selected setting of [Hex]/[ASCII].

d. Select the current AP encryption keys from Key1~Key4.

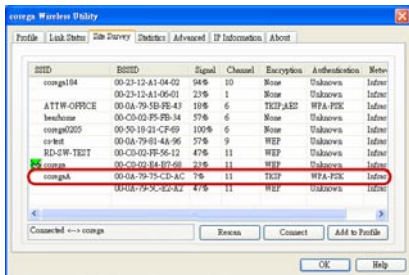
e. Press [OK] to finish setting.

5.2 Setting WPA

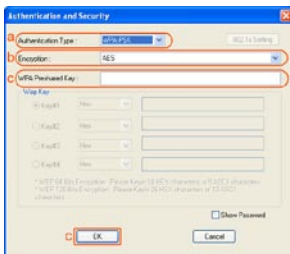
WPA encryption type can be divided into WPA-PSK, WPA2-PSK, WPA(or called WPA-EAP), and WPA2(or called WPA2-EAP). All settings should correspond to the settings of the current connected wireless network.

《WPA-PSK and WPA2-PSK》

1. Select an AP with [WPA-PSK] or [WPA2-PSK] authentication and press [Connect]. Here we use corega A for example. Thus the following settings must correspond with corega A.



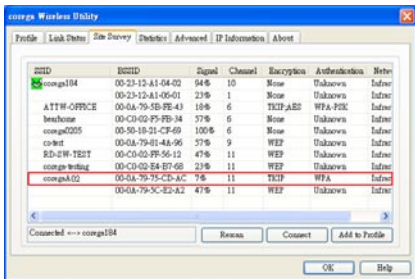
2. Setting the [Authentication and Security] Page:



- Authentication Type: Select [WPA-PSK] or [WPA2-PSK] (AP must support the function).
- Encryption: Select [TKIP] or [AES].(Same as AP)
- Enter the selected AP's password in [WAP Preshared Key] box and click [OK].

《WPA and WPA2》

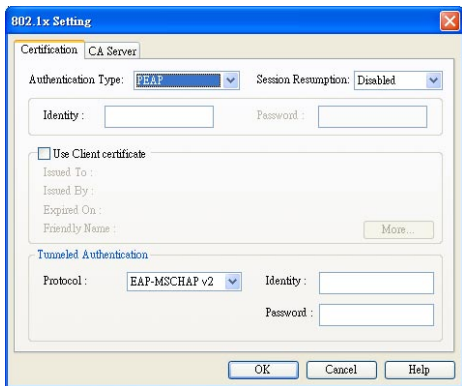
- Select an AP with [WPA] or [WPA2] authentication and press [Connect]. Here we use corega A02 for example, hence the following settings must correspond with corega A02.



- Setting the [Authentication and Security] Page:



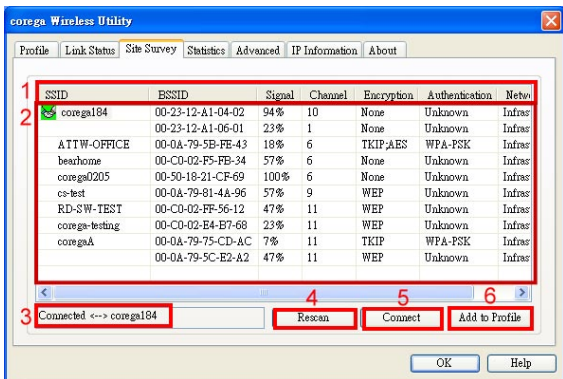
- a. Authentication Type: select [WPA]or [WPA2-PSK] (AP must support the function).
- b. Encryption: select [TKIP] or [AES](Same as AP)
- c. If the AP/router has [802.1x Setting] function, click it for advance setting. Please consult your MIS for details.




- d. Click [OK] to finish setting.

Chapter 6 will briefly introduce the sections in the setup utility.

6.1 Site Survey

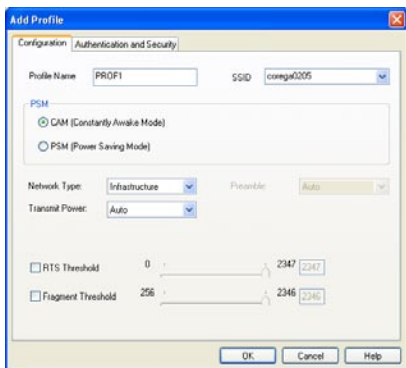


- The description of these sections
 - SSID : Name of AP (or called ESSID).
 - BSSID : Mac Address of AP
 - Signal : Signal strength of AP
 - Channel : AP used channel
 - Encryption : what encrypted mechanism does AP used
 - Authentication : What authentication mechanism does AP used.
 - Network Type : What Network Type does the AP belong to. Generally it is [infrastructure].
- Available WLAN list. The  icon means currently connecting.
- [Connected] means connection ok. [Disconnected] means connection failed.

4. Click [Rescan] to rescan and upgrade all the AP's information in time
5. Click [Connect] to start connecting the selected AP.
6. Save the selected AP's information to profile. For more details, please refer to 6.1.1.

6.1.1 Add one profile

1. Select one AP in the SSID column, eg: corega0205=>Click [Add to Profile] and the below page will appear.



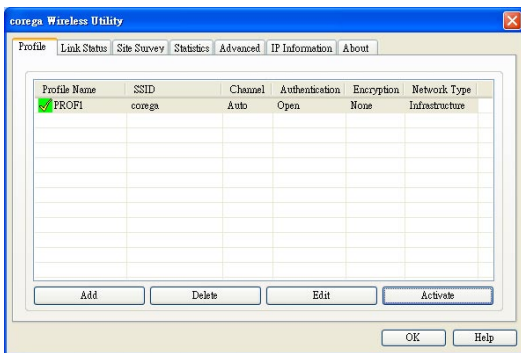
2. Setting items in the [configuration] tab:
 - Profile Name: Enter the connected AP profile, eg: PROF1.
 - SSID: Click the drop-down menu and select one AP. You can also enter the AP manually.
 - PSM: When CAM is selected, indicates that the product is not in power saving status. When PSM is selected, the product is in power saving status. (Only select it under Infrastructure nettype).
 - Network Type: [Infrastructure] or [Ad Hoc] type. We recom-

mend you to select [Infrastructure].

- **Transmit power:** the amount of power used by a radio transceiver to send the signal out. User can choose power value by sliding the bar.
- **[RTS Threshold] and [Fragment Threshold] :** We recommend you to use the default value 2312. User can adjust threshold numbers by sliding the bars or key in the values directly.

3. Click [OK] and the set AP will appear in the [Profile] tab.

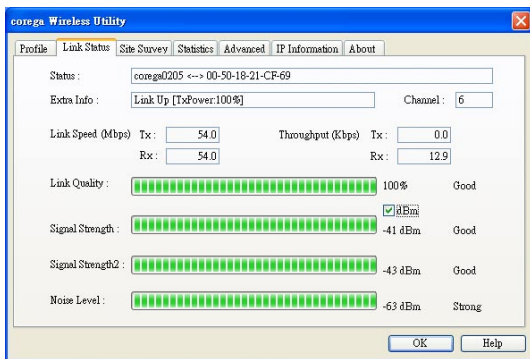
6.2 Profile



- **[Add]:** Click [Add] to add a new profile.
- **[Delete]:** to delete a profile, select one profile name and click [Delete].
- **[Edit]:** to edit the setting of a profile, select the profile and click [Edit].
- **[Activate]:** to activate the selected profile, select the profile and click [Activate].

6.3 Link Status

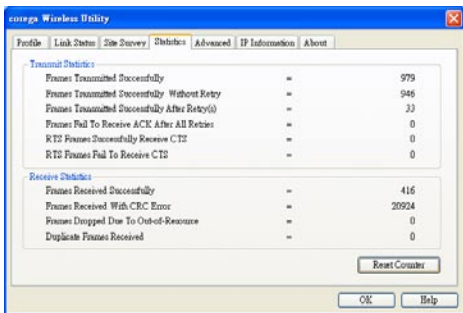
This tab displays the information of the link status.



- **Status:** Displays the linked AP name and MAC address. When [Disconnect] appears in this box, the connection is failed.
- **Extra Info:** link status and strength.
- **Channel:** Current channel in use.
- **Link Speed:** Show current transmit rate and receive rate.
- **Throughput:** Display transmits and receive throughput value.
- **Link Quality:** Display connection quality based on signal strength and TX/RX packet error rate.
- **Signal Strength:** Receive signal strength, user can choose to display as percentage or dBm format
- **Noise Level:** Display noise signal strength.

6.4 Statistics

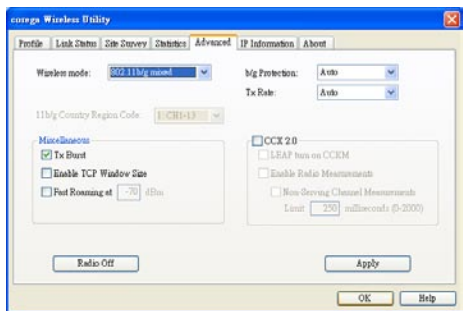
Statistics page displays the detail counter information.



- Transmit Statistics: Statistic of transmitted frames .
- Receive Statistics: Statistic of received frames.
- [Reset Counters]: Click [Reset Counter] to zero the statistic numbers of transmitting and receiving data.

6.5 Advanced settings

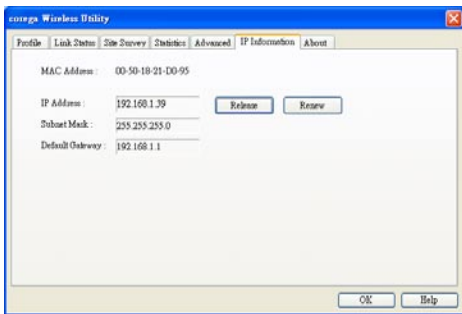
The advanced setting sections are shown as follows.



- Wireless mode: Select wireless network mode(speed)
 - 802.11b/g mixed: Automatically detect 11b or 11g
 - 802.11b only: Frequency only 11b
 - 802.11g only: Frequency only 11g
- 11b/g Protection: In order to keep the connection stable, please select [Auto] to automatically confirm which mode the wireless network is in.
- TX Rate: Manually force the Transmit using selected rate. Please accept the default setting.
- Tx-Burst: Ralink's proprietary frame burst mode. When it is checked, transmit throughput will be improved.(Only work when AP support this function. eg: coreag WLBARGMO)
 - Enable TCP Window Size: Extend the Window size of TCP.(When checked, the receive speed will improve.)
 - Fast Roaming at ___ dBm: It will enter roaming mode when dBm reaches a level.
- CCX2.0: Open CCX(supports Cisco Compatible Extensions function). Check it when AP supports Cisco.
 - LEAP turn on CCKM: Open CCKM function (Cisco Key Management).
 - Enable Radio Measurements: Open the function of CCK Monitor AP Channel.
 - Non-Serving Channel Measurements... : Select and start to monitor if wireless channel is non-serving.
- Radio Off: Disable wireless radio wave.
- [Apply] : Click this when finish the settings.

6.6 IP Information

The MAC Address and the IP information are displayed in this tab. Click [Release] to release IP address, click [Renew] to renew IP information.



6.7 About

The About tab displays the information of the utility version and the driver version.



There are 3 ways for solving your problems if WLUSB2GO can't connect to Internet as below:

- (1) First, please see following "FAQ" to check your problem.
- (2) Please go to <http://www.corega-asia.com> to download the latest driver.
- (3) Please go to <http://www.corega-asia.com>, then click "Supports" => select "Online Customer Support", => fill in the form, => click "submit". We'll reply you as soon as possible.
 - Product name: e.g.) WLUSB2GO
 - Firmware version: access the management program to check.
 - Your ISP service name.
 - Windows system: e.g.) Windows98/2000/XP and so on.
 - WEB browser(Version): e.g.) IE5.0/5.5/6.0 and so on.
 - Network adapter manufacturer and its driver version.
 - Connection way: fixed IP, dynamic IP or PPPoE dial-up connection.
 - What are your problem and situation: e.g.) unable to internet.
 - What is the error message or picture?

Q1.What should I do when it's not able to connect to the Internet?

A: Please make sure if the below processes are complete or not.

- (1) Verify the product is installed.
- (2) Verify the driver and the software are configured.
- (3) Verify the network setting is correct.
- (4) Verify the security setting is correct.
- (5) Verify the ESSID setting of AP router is correspond to that of WLUSB2GO.
- (6) Verify the channel if under Ad-Hoc mode.
- (7) Verify the wireless standard of AP is the same as WLUSB2GO.

Q2.How to keep the network connection quality well?

A:

- (1) Move the AP nearer.
- (2) Remove barriers between AP and laptop.
- (3) Do not place AP on a metal shelf.
- (4) Please keep away from microwave, 2.4GHz cordless phone, and medical equipment.
- (5) Change the direction of your laptop or AP.

Q3.What should I do when I can not find other computers in [My Network Places]?

A: To solve this problem, please open [My Network Places] and make sure all computers have the same settings in the network name.

■ Windows XP

- (1) Right click on [My Computer]=>select [properties]
- (2) Select [Network Identification]=>select [properties], type the same network name in [work group] box.

Q4.What should I do when there is trouble shooting information of the network adapter?

A: The below symbols indicates that your product installation has failed. Please remove the driver and utility of WLUSB2GO and configure the product again.

- * Displays [Other devices] in the hardware tree with a black exclamation point "!" on a yellow field and a yellow question mark "?" symbol.
- * The network adapter is not listed in the hardware tree of the [device Manager] page under [My Computer].
- * Displays two or more product name.

[How to solve this problem] :

(1) Right-click on the [Network controller] under [Other devices] and select [Uninstall].

(2) When confirm delete message appears , click [OK] .

(3) Follow the manual to install the product again.

Q5. What should I do when the network adapter icon appears a [x] symbol in the [Device Manager] page:

A: When there is a [x] on the icon, the product is disable. To solve this problem, please follow the instructions below:

■ Windows XP

Open [Control Panel]=>Double-click [System]=>Select [Hardware] tab=>Click [Device Manager]=>Right-click [CG-WLUSB2GO]=>select [enable]

Q6. How to get the latest driver and Utility?

A: Please go to <http://www.corega-asia.com>, then click supports=>download =>select "driver" or "Utility", =>select and click the model which you want to upgrade.

Compliance Standard	IEEE802.11, IEEE802.11b, IEEE802.11g
USB Interface	USB 2.0
Protocol	CSMA/CA
Transmission Method	DS-SS, OFDM
Network Type	Infrastructure/802.11 Ad-Hoc
Frequency Band/Channel	IEEE802.11b/g: 2.412GHz~2.472GHz
Transmission Rate	IEEE802.11b: 11/5.5/2/1Mbps IEEE802.11g: 54/48/36/24/18/12/9/6Mbps
Transmitter Output Power	17.5dBm@11b, 13.5dBm@11g
Coverage Area	IEEE802.11b: Indoors 100M, Outdoors 375M(MIMO XR Function Enable Range) IEEE802.11g(@54Mbps): Indoors 30M, Outdoors 40M * Environmental factors may adversely affect wireless signal range
Security	WEP(64/128 bits), WPA-EAP (802.1x) / WPA2-EAP (802.1x)/WPA-PSK / WPA2-PSK
Antenna Type	Planar Inverted F Antenna
Antenna Gain	3.48dBi
Support OS	Windows 98SE / ME / 2000 / XP
Power Consumption	1.6W
Environmental Requirements	
Operating	Temperature: 0°C~40°C Humidity: <90% (non-condensing)
Storage	Temperature: -20°C~60°C Humidity: <95% (non-condensing)
Physical Specifications	
Dimension	23(W) x 12.5(D) x 85(H) mm
Weight	30 g (main unit)

About corega

corega可瑞加科技於1996年成立於日本新橫濱，致力於提供多元化的家用網路產品：包括乙太網路交換器、無線區域網路系列產品、路由器、藍芽系列產品、以及與網路相關的產品應用及服務。

corega目前已是日本專業家用網路產品的暢銷品牌，並且於2002年2月於台北成立可瑞加科技，專注於台灣市場推廣高品質的日系家用網路設備。corega以使用者的需求導向為最重要的營運方針，多樣化的產品行銷以及通路服務營造corega為最親切適用的家庭網路設備第一品牌！

竭誠感謝您購買corega可瑞加產品，期待本產品為您帶來更快速便捷的連線體驗，更期盼日後您家用網路擴充/升級的機會，corega能繼續陪伴您！

corega K.K. designs, develops and markets professional networking products that address the specific needs of small and medium enterprises and home user's easy-to-use, quality and reliable services of networking solutions requirements.

Established in 1996, corega 100% founded by Allied Telesis Group in Yokohama, Japan. corega's core products consists of 10/100/1000 Ethernet products, Wireless Networking Products(802.11 a/b/g series), broadband access routers, Bluetooth series and other networking peripheral, such as IP camera and USB Phone.

Thank you again for purchasing corega's product. Wish you would enjoy the powerful and friendly corega connecting experience!!



www.corega.com.tw
www.corega-asia.com

corega Taiwan Inc.

7F., No. 10, Lane 345, YangGuang St. Nei-Hu
Chiu, Taipei City 114, Taiwan
TEL: +886-2-8751-9164 FAX: +886-2-8751-9174

Free Manuals Download Website

<http://myh66.com>

<http://usermanuals.us>

<http://www.somanuals.com>

<http://www.4manuals.cc>

<http://www.manual-lib.com>

<http://www.404manual.com>

<http://www.luxmanual.com>

<http://aubethermostatmanual.com>

Golf course search by state

<http://golfingnear.com>

Email search by domain

<http://emailbydomain.com>

Auto manuals search

<http://auto.somanuals.com>

TV manuals search

<http://tv.somanuals.com>