



IMI CORNELIUS REMGOR INC ■ 500 REGENCY DRIVE ■ GLENDALE HEIGHTS, IL 60139-2268

Telephone (800) 551-4423

Facsimile (800) 519-4423

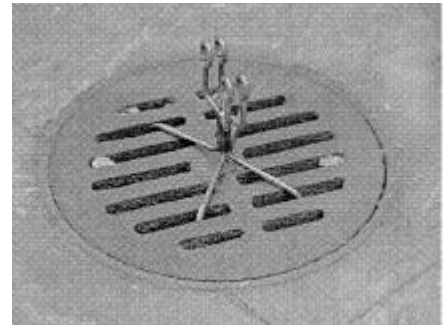
## KIT P/N 629087401

# DRAIN LINE SUPPORT INSTALLATION INSTRUCTIONS

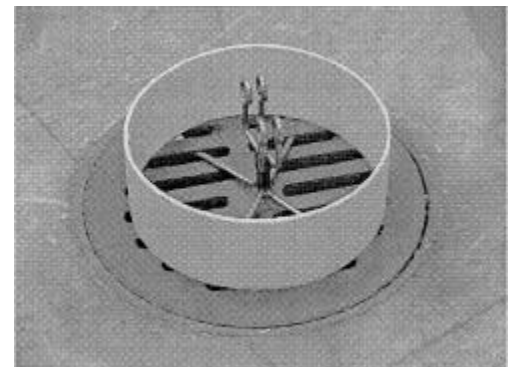
Read and understand these instructions thoroughly before installing this kit. Retain these instructions as part of your equipment manual.

### INSTALLATION PROCEDURE FOR FLAT FLOOR DRAINS

1. Mount the wire form support in the center of the floor drain grid and clamp its four legs of the support onto the drain grid securely. If necessary, reform the legs to fit and attach firmly to the drain grid. The clamps are omitted for clarity on the first two illustrations.



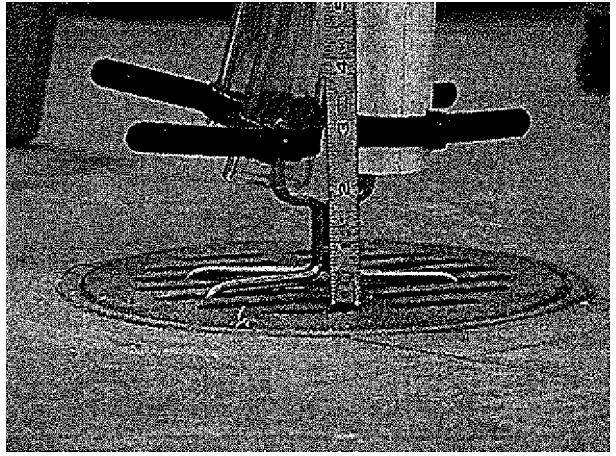
2. Place the plastic splashguard collar over the wire form support.



3. The adjustable clamps will accommodate 1/2-inch, 3/4-inch, and 1-inch I.D. either soft or rigid (hard) PVC tubing. Squeezing the two tabs together that are located on the clamp-locking collar will loosen a tightened clamp.



4. Place each drain line a minimum of 2-inches up from the wire form feet and tighten each clamp bolt in place to firmly secure the drain line(s) in place. The collar is omitted for clarity.



5. Check for kinks and eliminate them. If necessary, add appropriate size 45° barb to barb connectors.

## INSTALLATION PROCEDURE FOR FLOOR DRAINS WITH FUNNELS

6. Mount the wire form support in the center of the floor drain funnel and clamp its four legs of the support onto the drain funnel securely. If necessary, reform the legs to fit and attach firmly to the drain funnel.

7. The funnel takes the place of the plastic splashguard collar. The collar is unnecessary and can be discarded.

8. The adjustable clamps will accommodate 1/2-inch, 3/4-inch, and 1-inch I.D. either soft or rigid (hard) PVC tubing. Squeezing the two tabs together that are located on the clamp-locking collar will loosen a tightened clamp.

9. Place each drain line 2-inches up from the top of the funnel and tighten each clamp bolt in place to firmly secure the drain line(s) in place.



10. Check for kinks and eliminate them. If necessary, add appropriate size 45° barb to barb connector(s).

## Free Manuals Download Website

<http://myh66.com>

<http://usermanuals.us>

<http://www.somanuals.com>

<http://www.4manuals.cc>

<http://www.manual-lib.com>

<http://www.404manual.com>

<http://www.luxmanual.com>

<http://aubethermostatmanual.com>

Golf course search by state

<http://golfingnear.com>

Email search by domain

<http://emailbydomain.com>

Auto manuals search

<http://auto.somanuals.com>

TV manuals search

<http://tv.somanuals.com>