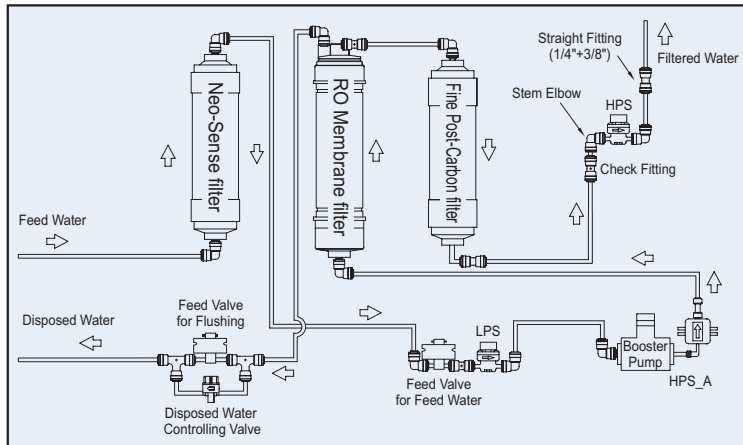


## Water Flow Diagram



## Specification

| Model               | P-06CR*                                                      |
|---------------------|--------------------------------------------------------------|
| Power Supply        | Voltage rating that matches it on the rating plate.          |
| Filtration Method   | R/O                                                          |
| Working Pressure    | 0.07-0.83MPa(10-120psi)                                      |
| Working Temperature | 41-95°F (5-35°C)                                             |
| Production Rate     | 700gal/day                                                   |
| Dimension           | 244(W) × 405(D) × 450(H)mm<br><9.6(W) × 16(D) × 17.7(H)inch> |
| Net Weight          | 12kg(26.5lb)                                                 |

- Without any prior notice, all or parts of the product are subject to change for the purpose of improving the performance of the product.
- Efficiency rating means the percentage of the influent water to the system that is available to the user as reverse osmosis treated water under operating conditions that approximate typical daily usage.
- Recovery rating means the percentage of the influent water to the membrane portion of the system that is available to the user as reverse osmosis treated water when the system is operated without a storage tank or when the storage tank is by passed.



- This product can not be used if the voltage is different from that mentioned in the rating plate.
- The Letter of Guarantee is enclosed here with this Coway product realizing "A/S is the best policy".
- Instruction manual that only service man can replace this fuse.

# User's Manual Water Filtration System

## P-06CR\*

Do not fail to read this user's manual before you use this water filtration system and keep it within ready reach.



## DEAR CUSTOMERS

First of all, we would like to thank you very much for purchasing our water filtration system. This product is superior in function to the ones in the past.

We believe that it will provide you with cleaner and healthier water.

We would like to recommend that you to read carefully this user's manual for proper operation and maintenance. Please keep it filed with the warranty. This user's manual could solve future problems so that you can easily fix them by yourself in just a few minutes.



### Read this Manual

Inside this manual you will find many helpful hints on properly maintaining your filtration system. Just a little preventive care on your part can save you a great deal of time and money over the life of your system.



### Review the Section on Troubleshooting Tips

You'll find many answers to common problems here. If you review this Chart of Troubleshooting tips immediately after purchase, you may not need to call for service at all later on .



### In Case of Need Service

If you do need service, make a phone call to customer center.

### Safety Information

|                               |    |
|-------------------------------|----|
| Electricity Safety .....      | 02 |
| Installation & Safe Use ..... | 03 |

### Operating Instructions

|                               |    |
|-------------------------------|----|
| Features .....                | 06 |
| Names of Each Part .....      | 07 |
| How To Use .....              | 09 |
| How To Replace Filter .....   | 11 |
| Water Filtration System ..... | 13 |

### Troubleshooting Tips

|                                          |    |
|------------------------------------------|----|
| Before Contacting Customer Service ..... | 14 |
|------------------------------------------|----|

### Customer Service

|                            |    |
|----------------------------|----|
| Warranty Information ..... | 15 |
|----------------------------|----|

※This system (P-06CR\*) conforms to NSF/ANSI 58 for the reduction of Pentavalent Arsenic, Barium, Cadmium, Mercury, Selenium, Radium 226/228, Trivalent chromium, Hexavalent chromium, Lead, Nitrate/Nitrite as verified and substantiated by test data.

※This system (P-06CR\*) conforms to NSF/ANSI 42, 53 for the reduction of Chlorine and VOC as verified and substantiated by test data.

※This system is acceptable for treatment for influent concentrations of no more than 27 mg/L nitrate and 3 mg/L nitrite in combination measured as N and is certified for nitrate/nitrite reduction only for water supplies with a pressure of 280 kPa(40 psig) or greater.

## IMPORTANT SAFETY INFORMATION

Read all of the installation precautions and instructions carefully and completely prior to use. Periodic maintenance is required in order for this product to perform as advertised. Read these instructions before using, and keep them in an accessible place.

### ⚠ WARNING

**For your safety, the information in this manual must be followed to minimize the risk of property damage or personal injury.**

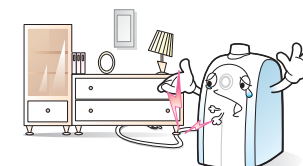


### Electricity Safety

- Connect the power cord only to an outlet of the voltage rating that matches it on the rating plate. Do not plug in or unplug the power cord with wet hands or get the plug wet in order to avoid dangers such as electric shock or fire.



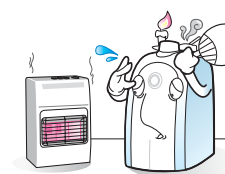
- Be sure the power cord does not get bent by force, and do not put a heavy object on it in order to avoid any electric leakage or damage.



- Never splash the water filtration system with water to avoid the risk of electric shock.



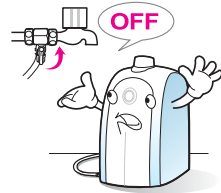
- Keep the cord out of heavily trafficked areas. To avoid fire hazard, **NEVER** put the power cord under rugs, near heat resistors, radiators, stoves, or heaters.



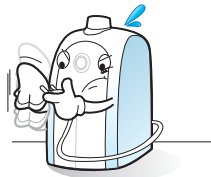
- Do not use a damaged power cord or plug, and if the plug cannot be inserted securely into an outlet, please make the necessary adjustments for the purpose of avoiding fire or shock hazards. If the power cord is damaged, it must be replaced by the manufacturer, its service agent, or a similarly qualified person in order to avoid danger.



- Always unplug the water filtration system before moving it, cleaning it, repairing it, or replacing the filter. Also, close the main feed water valve during periods that the product is not in use.



- Periodically remove dust from the power plug with a dry cloth. Dust built-up can cause insulation complications and a fire may occur as a result.



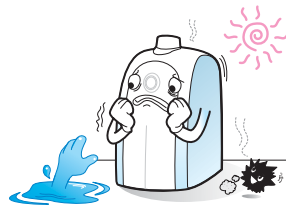
### **WARNING**

**Do not use with water that is microbiologically unsafe or of unknown quality without adequate disinfection before or after the system.**

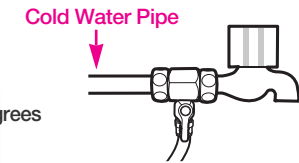


## Installation & Safe Use

- Keep the water filtration system away from humid places and direct sunlight in order to avoid electric shock and fire.



- Connect the water filtration system to your cold water pipe only.

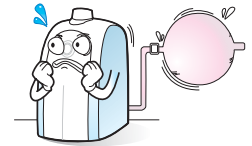


**Note** | The feed water that's over 40 degrees could cause damage to the filters.

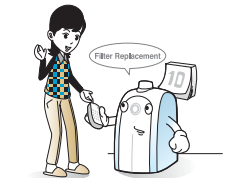
- Do not install the water filtration system in a location where it could cause water to freeze. Damage from freezing is not covered by the warranty.



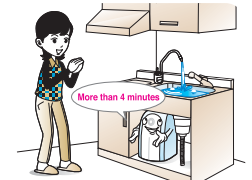
- If the water pressure at one's house is over the maximum working pressure of the water filtration system (referring to the rating plate), install a pressure-reducing valve in the water line.



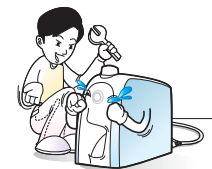
- Periodic filter replacement is required for assuring that clean water is emitted. If filters are overused, the performance of the filters deteriorates. Therefore, be sure to replace the filters in a timely manner.



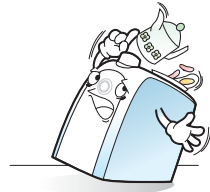
- Please drain the water for a period of four minutes or more if you have not used it for a long time.



- Do not repair, disassemble, or modify the unit. Fire and/or electrical shock may occur as a result. For repair, contact your dealer of purchase or customer-service center. Only service man can replace this fuse.



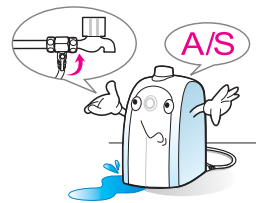
- Please do not put glasses, food, Etc. on the unit.



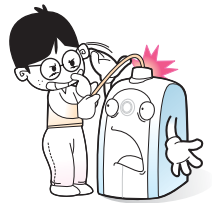
- Immediately unplug in the case of smoke emission or if you smell fire. Also, call the A/S center. Electric shock or a hazardous fire may occur as a result of inaction.



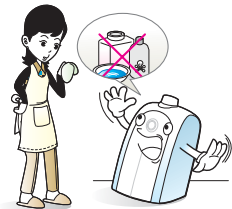
- Cut off the feed water valve and unplug if there's any water leakage from the product. Afterwards, call the A/S center.



- The appliance is not intended for use by young children or infirm people without supervision. Young children should be supervised to ensure that they do not play with the appliance.



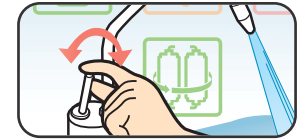
- Do not sprinkle the product directly with water, and do not use benzene or oil when cleaning the product. Doing so may result in electric shock or fire.



## FEATURES

### 1 Undersink type

User can get the purified water by just opening the faucet.



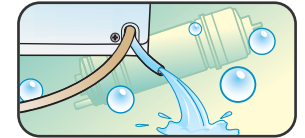
### 2 Self Filter Check

The electric filter change indicator reminds user when to change the filter.



### 3 Auto Flushing

If the system is in use for an extended period of time, the filter can be protected by the auto flushing feature.



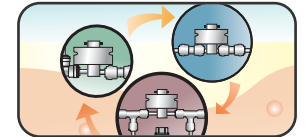
### 4 Innovative Tankless R/O Technology

Coway invented a tankless R/O water filtration system which is very space-efficient.



### 5 Safer Structure

The risk of water leakage is diminished by using an electronic valve.



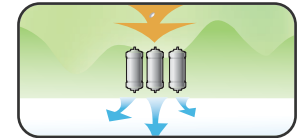
### 6 Preventing Secondary Pollution

Due to the tankless system, secondary-source pollution, which sometimes occurs inside of tanks, is eliminated.



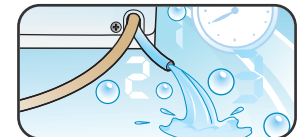
### 7 Speedy & Stable Water Flow

With the applied high-quality pressurizing device and filter, water flows at a rate desired by almost all users.



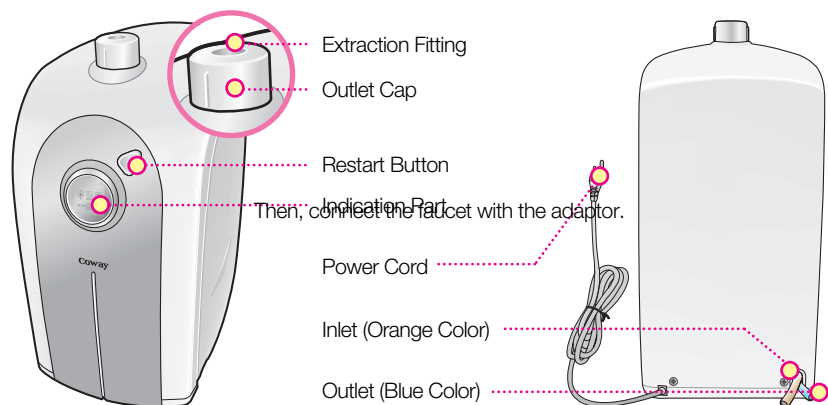
### 8 Two Modes

Depending on the usage condition of the user, this device can be installed in one of two ways.



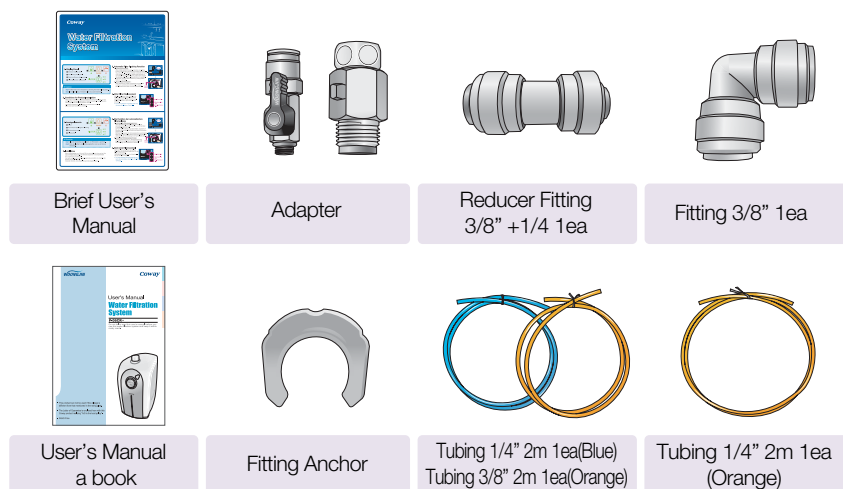
# NAMES OF EACH PART

## Front/Rear



※Check fitting and tubings are the parts that can be replaced.

## Installation Accessory



## Indication Parts



### 1 Indicator of Water Extraction

The light blinks when filtered water comes out through the faucet and the light goes out when you're not using filtered water.



### 2 Indicator of flushing

The light indicating "wash" blinks in the event of filter cleansing by flushing. The blinking stops when the cleansing is over, and the light goes out. If the filter is in use for a period of more than four minutes, the filter can be protected by auto flushing, which starts when the filter no longer has water passing through it. Additionally, if the unit has not been used in more than 24 hours, auto flushing for 30 seconds automatically occurs.



### 3 Indicator of Water Shortage

The light blinks for 10 seconds as soon as the feed water supply is inadequate, or is interrupted. If you see the blinking light, please check the quantity of inflow or the feed valve for the feed water.



### 4 Indicator of Filter Replacement

The light saying "Filter" lights up when a filter replacement is needed.



- A : Neo-Sense filter
- B : RO Membrane filter
- C : Fine Post-Carbon filter

# HOW TO USE

## ⚠ WARNING

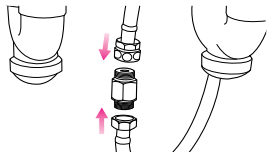
Make sure that there's no water leakage before plugging in the power cord.

## Preparation Before Use

**Step1** Wind the teflon tape on the adaptor and fit it to the pipe.

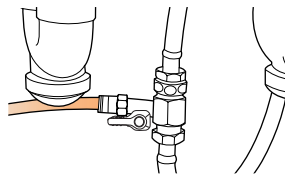
⚠ Shall install the adaptor with connector on the cold water pipe.

Then, connect the faucet with the adaptor.

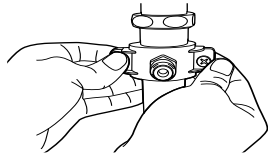


**Step2** Connect orange tubing with the connector on the adaptor.

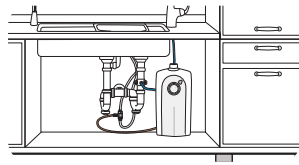
⚠ Flush water through each filter at least 5 minutes before connection.



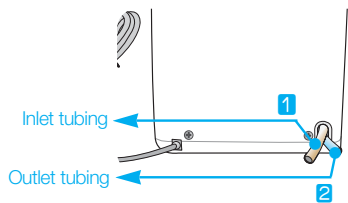
**Step3** Make a hole on the drain pipe and install the drain clamp on the hole.



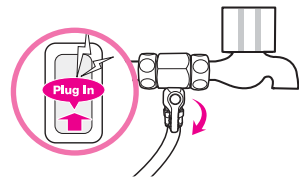
**Step4** Connect the extraction fitting to the faucet with a tube.



**Step5** Connect the orange colored inlet tubing for the feed water with the cold water pipe. Extend the blue color outlet tubing to where the drain is.

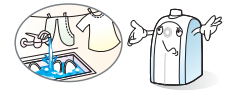


**Step6** Connect it to voltage rating that matches it on the rating plate. Then, open the feed valve to supply water to the filtration system.



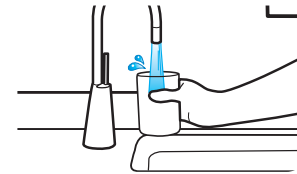
## ▶ The Usage Condition : The feed water is more than 2.5L/min, 17psi.

- This unit is the R/O type of purifier which needs an appropriate inflow quantity for proper performance. If the unit is set up in a way where the installation status is substandard, a malfunction such as excess noise and trembling can occur.
- The warning light for water shortage turns on for safety when the feed water pressure suddenly drops, or the inflow quantity decreases.
- This device is installed in one of two ways, depending on the usage conditions.
- This product operates auto filter-flushing for 3 minutes after installation. Please make sure that the line is connected.

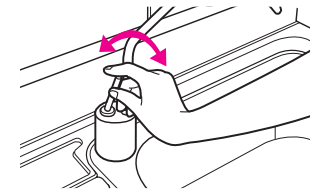


## How to Drink Water

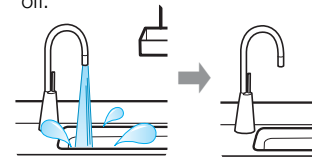
**Step1** Put the extraction pipe in the desired position and place the cup under the extraction faucet to collect the water.



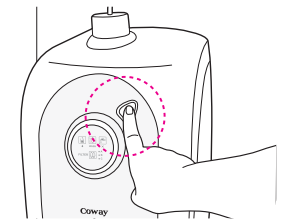
**Step2** Turn the faucet on and off depending on desired use of filtered water.



**Step3** Water extraction automatically stops after four minutes to prevent too much use of water or overflowing around the product caused by user's carelessness. After repeating for eight cycles, this device will auto flush and then shut off.



**Step4** If the system does not work when the faucet is opened, push the restart button for one seconds to restart extraction.





# HOW TO REPLACE FILTER

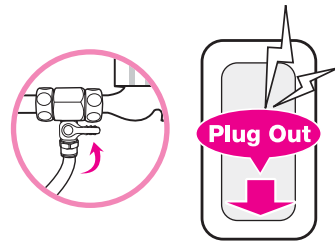
- Step1** Filter replacement time is indicated when the corresponding LED of filter flickers in window display.



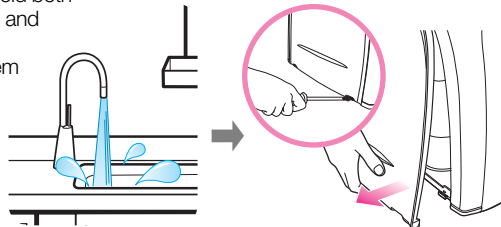
- Step2** Each of A, B and C respectively represents neo-sense filter, RO membrane filter and fine post-carbon filter.



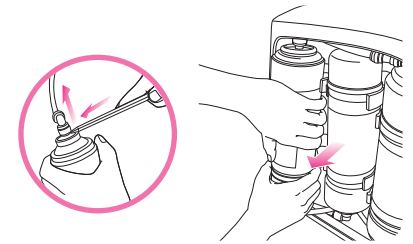
- Step3** Close water lead-in valve and pull out plug.



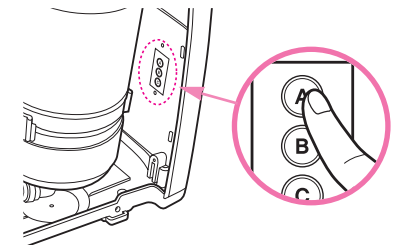
- Step4** Unfasten screws. Then, hold both side covers at the bottom and force them upwards as if pushing up to remove them from the main body.



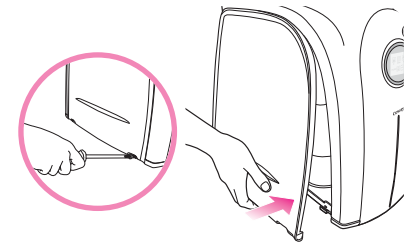
- Step5** Remove fitting from filter as shown in diagram. Replace filters as required. Take caution for safety at all times.



- Step6** Initialize filter setting by pressing the corresponding button (for 3 sec) of filter among the filter reset buttons located at the back of the front panel.



- Step7** Insert both side covers and fasten screws.



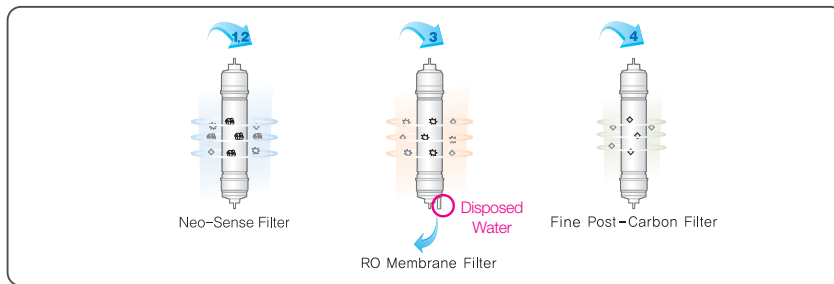
- Step8** Check for normal operation of filter replacement parts in window display.



※ **Caution** : When LED to indicate filter replacement is turned on, users must not attempt at replacing filters on their own. Make sure to inquire after-sale service center.

# WATER FILTRATION SYSTEM

## Water Filtration Process



### ⚠ WARNING

*The disposed water shall be used for cleaning a toilet, a house, dishes, and as water for sundry uses. However, please do not use it for potable water or cooking water. The product water should be tested every 6 months to ensure that the contaminants are being reduced effectively. Please contact your local dealer or Coway to initiate this service.*

### STEP1, 2 Neo-sense Filter (Sediment Filter + Pre-carbon Filter)

The filter can reduce various foreign bodies that come from the feed water pipe such as: dirt, sand, rust particles, VOCs and chlorine.

### STEP3 RO Membrane Filter

The RO (Reverse Osmosis) Membrane filter reduces Pentavalent Arsenic, Barium, Cadmium, Mercury, Selenium, Radium 226/228, Trivalent chromium, Hexavalent chromium, Lead, Nitrate/Nitrite.

The Post-Carbon filter reduces unpleasant smell from water and enhances water flavor.

The influent water to the system shall include the following characteristics.

- No organic solvents
- Chlorine : < 2 ppm
- pH : 7-8
- Temperature : 41 ~ 95 °F (5 ~ 35 °C)
- Iron : < 2 ppm
- Turbidity : < 1 NTU
- Hardness : < 1000 mg/L

### STEP4 Fine Post-carbon Filter

The post-carbon filter removes odor of water and improve water taste.

### Note

This reverse osmosis system contains a replaceable treatment component, critical for the effective reduction of total dissolved solids and that product water shall be tested periodically to verify that they system is performing properly.

This reverse osmosis system contains a replacement component critical to the efficiency of the system. Replacement of the reverse osmosis component should be one with identical specifications, as defined by the manufacturer, to assure the same efficiency and contaminant reduction performance.

## Estimated Time of Filter Replacement

The estimated time of filter installation until replacement is based on using the filter under normal conditions. It's not a guarantee of the filter's effective period of use or of its quality, if used in excess of expected usage. Accordingly, the estimated period may be shortened if the unit is used to purify poor-quality water, or used excessively.

- According to the quality of the water being purified can impact the need to change the filter in either direction.
- The consumption per day is calculated at 200L/day, with the estimated time that the filter needs changing increasing or decreasing depending on the volume used.

| Part No.     | Names of Filter         | Usable Period |
|--------------|-------------------------|---------------|
| WJNF12       | Neo-Sense Filter        | 6 months      |
| WJMF12-700   | Membrane Filter (RO)    | 24 months     |
| WJFCF12-POST | Fine post-carbon filter | 12 months     |

A/S Phone No : 213-480-1600



## BEFORE CONTACTING CUSTOMER SERVICE

### Check the followings before requesting for A/S.

The system can not operate properly because of trivial problems or a lack of user's experience, not because it's out of order. In those cases, please check the following carefully to solve such problems. Please call the A/S Center if you have any problems except for the following.

| Troubles                                            | Points to be checked                                              | Troubleshooting                                                                                                                                        |
|-----------------------------------------------------|-------------------------------------------------------------------|--------------------------------------------------------------------------------------------------------------------------------------------------------|
| Unusual taste of water                              | Have you not used the water purifier for long time?               | Please use the water purifier only after draining the water for four minutes prior to collecting potable water.                                        |
|                                                     | Is it the time to replace the filter?                             | Replace the filter if it is.                                                                                                                           |
| The amount of filtered water has suddenly decreased | Has the temperature of the feed water dropped dramatically?       | If the water temperature lowers, the amount of filtered water may be reduced.                                                                          |
|                                                     | Is it the right time to replace the filter?                       | Replace the filter if so.                                                                                                                              |
| No water comes out                                  | Is the power cord connected?                                      | Check to see if the power cord is connected to the voltage rating that matches it on the rating plate.                                                 |
|                                                     | Is the "water shortage" light blinking?                           | Check to see if the water pressure lowers or there is a suspension of water due to excessive use of feed water. Check if the feed water valve is open. |
|                                                     | Is there a suspension of feed water into the system?              | When the water is supplied normally, the filtered water will come out in like fashion.                                                                 |
|                                                     | Is the inlet tubing or outlet tubing of the feed water connected? | Connect the inlet tubing and outlet tubing properly.                                                                                                   |
|                                                     | Have you not replaced the filter on time?                         | Replace the filter if needed.                                                                                                                          |
| During operation, and all functions stop suddenly   | Is the feed water supplied flowing smoothly?                      | Check the inlet and outlet connection.                                                                                                                 |
|                                                     | Is the power cord connected?                                      | Check to assure that the power cord is connected.                                                                                                      |

## WARRANTY INFORMATION

Coway

### Product Guarantee

- Parts and components shall be replaced free of charge within the guarantee period if the defects occur due to manufacturing defects in normal operation.
- Contact us in case of breakdown.
- In the following cases, repair work shall be charged even within the guarantee period.
  - ▶ Breakdown caused by careless operation or unreasonable repair and renovation.
  - ▶ Breakdown caused by nonperformance of the instructions specified in the manual.
- Even after the expiration of guarantee period, it is possible to apply for charged repair.
- Present this Letter of Guarantee whenever repair is needed.
- This Letter of Guarantee is valid only in domestic where you buy this product.
- Keep this Guarantee carefully as it is not re-issued.

| Product Name       | Coway Water Filtration System | Guarantee Period |
|--------------------|-------------------------------|------------------|
| Model              | P-06CR*                       | 1 year           |
| Serial No.         |                               |                  |
| Date of Purchase   |                               |                  |
| Guarantee Period   | From                          | To               |
| Customer's Address |                               |                  |
| Customer's Name    | Tel.                          |                  |

Please contact our customer's service center in case you are not satisfied with our A/S service.

- Nationwide A/S Call : 213-480-1600
- Nationwide Periodical Inspection and Filter Replacement Call : 213-480-1600
- Customer counseling Center Call : 213-480-1600 Fax :

☞ In case any other filters or parts which are not genuine products of we are used, we is not responsible for any problems related to water quality.

Coway Co., Ltd  
658 Yugu-Ri, Yugu-Eub, Gongju-Si, Choongchungnam-Do, Korea  
Tel : 82-41-850-7879 Fax : 82-41-841-7816  
www.coway.com

# MEMO

---

---

A large rectangular area with a light gray background and rounded corners, containing horizontal dotted lines for writing.

A large rectangular area with a light gray background and rounded corners, containing horizontal dotted lines for writing.

## Free Manuals Download Website

<http://myh66.com>

<http://usermanuals.us>

<http://www.somanuals.com>

<http://www.4manuals.cc>

<http://www.manual-lib.com>

<http://www.404manual.com>

<http://www.luxmanual.com>

<http://aubethermostatmanual.com>

Golf course search by state

<http://golfingnear.com>

Email search by domain

<http://emailbydomain.com>

Auto manuals search

<http://auto.somanuals.com>

TV manuals search

<http://tv.somanuals.com>