



# Coway

## Water Filtration Device **P-07CL**

- For your safety and proper use of the product, please read this User's Manual before use.
- Warranty card is included in this User's Manual.



# FEATURES

## 1. Continuous extraction function

If you let the coke lever down, as you can extract the water continuously in a state of stopped lever, it is convenient.



## 2. Uniform water pressure keeping function

In the area with the high water pressure, it protects the inside of the product from the high water pressure by providing a main water with a uniform water pressure.



## 3. Closed tank for preventing the secondary pollution

It is the hygienic by applying the extra closed structure to the inner tank to preventing the secondary pollution due to the intrusion of a dust, worm, and other foreign body.



## 4. Compact, Slim Design

The compact, slim design fits any small space in your kitchen.



# DEAR CUSTOMERS

Thank you for using **Coway Water Filtration Device**.

Please read this Users' Manual to use and maintain the product correctly. If you encounter a problem while using the product, you may solve the problem referring to the User's Manual.

As this manual contains the product warranty card, please keep it in a safe place.

This system conforms to NSF/ANSI 42 for aesthetic chlorine reduction and NSF/ANSI 53 for VOC reduction as verified and substantiated by test data.

This system conforms to NSF/ANSI 58 for the reduction of pentavalent arsenic, barium, cadmium, selenium, radium 226/228, trivalent chromium, hexavalent chromium, lead, nitrate/nitrite as verified and substantiated by test data.

See performance data sheet for individual contaminants and reduction performance.

This system is acceptable for treatment for influent concentrations of no more than 27 mg/L nitrate and 3 mg/L nitrite in combination measured as N and is certified for nitrate/nitrite reduction only for water supplies with a pressure of 280 kPa(40 psi) or greater.

## CONTENTS

### FOR INFORMATION

SAFETY INFORMATION .....	3
Installation safety .....	3
Operation safety .....	3
Others .....	4
PARTS NAME .....	5
WATER FILTRATION PROCESS .....	6

### MAINTENANCE

INSTALLATION .....	10
CLEANING METHOD .....	12
Storage tank .....	12
FILTER REPLACEMENT .....	15
FILTER REPLACEMENT METHOD .....	16

### HOW TO USE

INSTALLATION PRECAUTIONS .....	7
HOW TO USE .....	9
To drink the room water .....	9
To extract continuously .....	9

### OTHERS

TROUBLESHOOTING .....	18
SPECIFICATIONS .....	19
WATER FLOW DIAGRAM .....	20
PERFORMANCE DATA SHEET .....	21
WARRANTY CARD .....	25

- Please keep the User's Manual where it can be readily reached or found -

# SAFETY INFORMATION

## Be careful to keep this safety information.

Please read this safety information carefully to ensure your safety and to prevent possible property damage or loss.



**Danger**  
If not observed, serious injury or even death could occur.

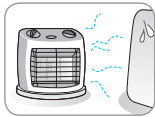


**Warning**  
If not observed, serious injury or property damage could occur.

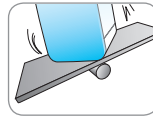


**Caution**  
If not observed, slight injury or property damage could occur.

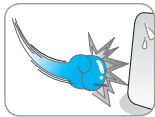
## Installation safety



- ⚠ **Do not install near a heating device.**  
Otherwise, fire may occur as a result.



- ⚠ **Do not install the product on a sloped floor.**  
Injury to the user or damage to the unit may result.

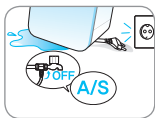


- ⚠ **Do not press the product by constraint or impact.**  
Injury to damage to the unit may result.

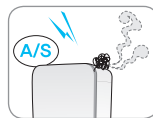


- ⚠ **The filtration device installation shall comply with applicable state and local regulations.**

## Operation safety



- ⚠ **When the water is coming inside of the product or there is a puddle on the product, call Service Center after closing the supplying valve and unplugging.**  
Otherwise, electric shock may occur as a result.



- ⚠ **If our product produces a strange noise or odd smell, immediately unplug from the electrical outlet and call our Service Center.**  
Otherwise, electric shock or fire may occur as a result.



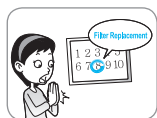
- ⚠ Do not put the candle, a light for cigarette on the products.

Otherwise, fire may occur as a result.



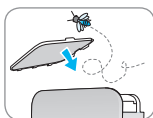
- ⚠ Do not place any containers with water, medicine, food, small metallic objects, or any flammable material on the top of the product.

In the case foreign material gets inside the product, electric shock, fire, product damage may occur as a result.



- ⚠ To drink the filtered, change the filter according to the filter replacement cycle.

If you use the expired filter, the filter performance is lowered.



- ⚠ Use after closing the water tank cover completely inside of the product.

The buck or the foreign body can be entered.

## Others



- ⚠ Do not clean by spraying the water directly or don't wipe the product using the benzene and thinner.

Otherwise, electric shock or fire may occur as a result.



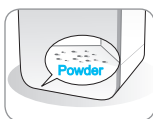
- ⚠ Do not repair, disassemble, or modify.

Otherwise, electric shock or product damage may occur as a result.



- ⚠ Do not use filtered water for the water exchange of an aquarium or a fishbowl.

The room water through the membrane isn't suitable for the fish's life environment as it removed the ionic material. In some cases, fishes might even die.



- ⚠ After moving the product or replacing the inno-sense filter, the black powder can be remained in the inner bottom of the water tank.

It is quiet harmless as the powder of the activated carbon used in the inno-sense filter was flowed out for improving the water tastes.



- ⚠ Rotate with grasping the filtered water extraction faucet or don't raise the product using the faucet.

Otherwise, the leakage may be occurred or product may break.



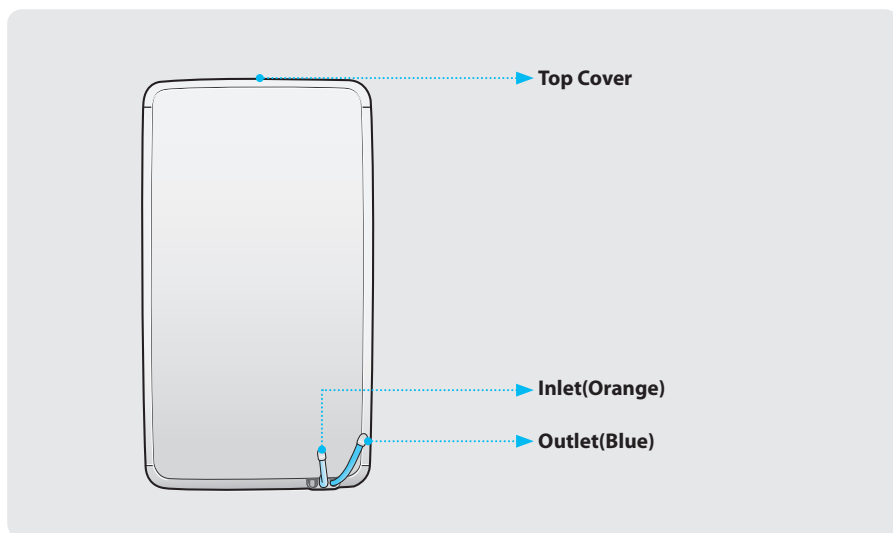
- ⚠ Do not use with water that is microbiologically unsafe or of unknown quality without adequate disinfection before or after the system.

# PARTS NAME

## | Front |



## | Rear |



# WATER FILTRATION PROCESS

The filter is the core technology of the filtration system.

If you don't use qualifying filter or if you use an old filter that has expired, the system performance may degrade.

## The 5-step Water Filtering System

### Step 1, 2 : NEO-SENSE FILTER

This neo-sense filter has the function to reduce aesthetic chlorine, odor, volatile organic compounds(VOC's).

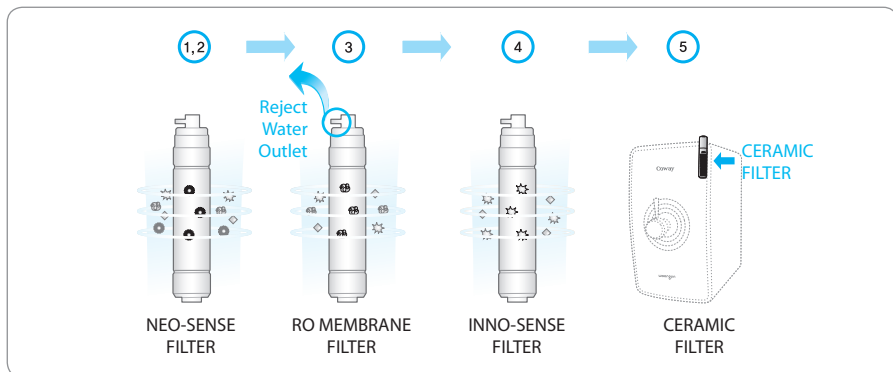
### Step 3 : RO MEMBRANE FILTER

RO membrane filter has the function to reduce water contaminants such as pentavalent arsenic, barium, cadmium, selenium, radium 226/228, trivalent chromium, hexavalent chromium, lead, nitrate/nitrite.

### Step 4 : INNO-SENSE FILTER

This inno-sense filter has the functions to reduce smell induction material and to improve taste of water. It also has the function to reduce aesthetic chlorine, volatile organic compounds(VOC's).

### Step 5 : CERAMIC FILTER



Tips

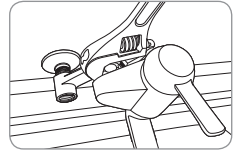
#### Uses of reject water

- The reject water should be used for cleaning the restroom, the house, clothes, or purposes other than drinking.
- Never use the reject water for a drinking or cooking.

# INSTALLATION PRECAUTIONS

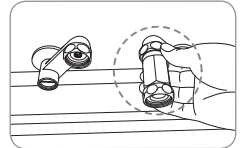
## ■ The summary for the proper installation of the water filtration device ■

1. Close main water supply valve to separate the faucet.



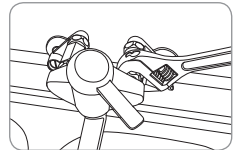
2. Apply the teflon tape on the adaptor and fit it to the pipe.

 Do not turn the water pipe.



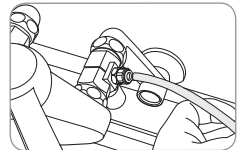
3. Connect the faucet with the adaptor.

 Install the adaptor with connector to the cold water pipe.

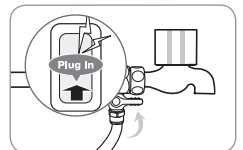


4. Connect 1/4 inch orange tubing with the connector on the adaptor.

 Flush water through each filter at least 5 minutes before Connection.



5. Open the feed valve to supply water to the filtration system.





## ! Please check before use! !

- **Open the main water supply valve.**

The main water must be supplied to operate the water filtration device normally.

- **After installing the product**

Get rid of the saved water above the full water in the inner water tank 2 times or more to use.

- **When you didn't use for a long time**

If you saved the water for a long time or you didn't use, drain the water inside of the water filtration device completely and remove the newly filtered water one time to use.

- **Regular filter replacement**

It is important to replace the filter regularly to maintain water quality as it is designed. If the filter is overused beyond its service life, the performance of the water filtration device deteriorate. Do not miss the filter replacement cycle.



Tips

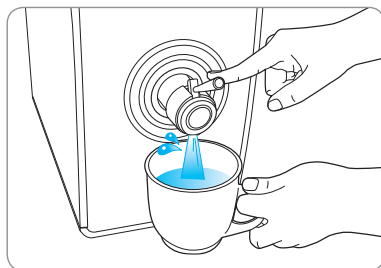
When you don't use for a long time, close the main water supply valve.

## HOW TO USE

---

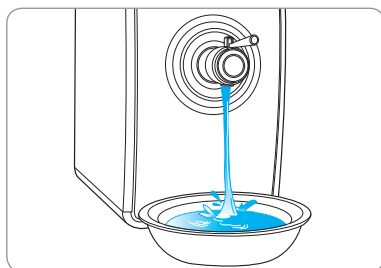
### **| To drink the room water |**

If you pull the extraction lever downward, you can drink the filtered water.



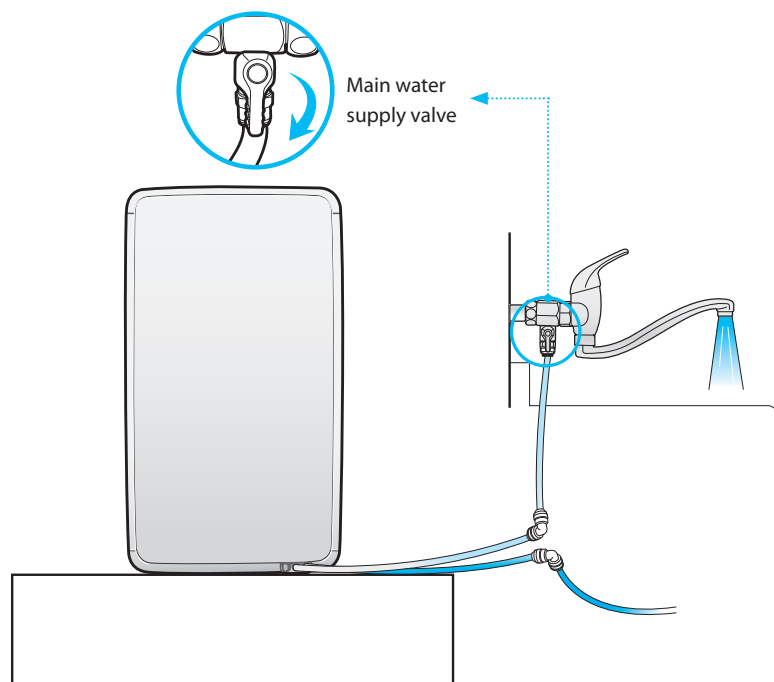
### **| To extract continuously |**

Please fix the lever by letting extraction lever down about 90°.



# INSTALLATION

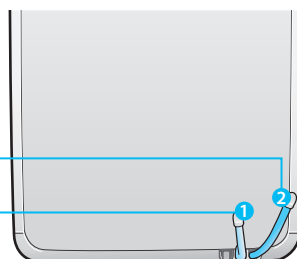
Follow the instruction for installation



Connect the orange color inlet tubing **1** to the tap water supplying pipe. Connect the outlet tubing **2**.

Outlet tubing  
(Blue)

Inlet tubing  
(Orange)

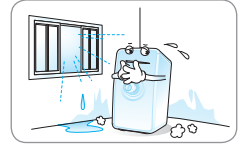


# INSTALLATION

## | Be cautious! |

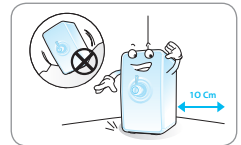
### ■ Water filtration device installation place 1

Please install the water filtration system not at a rough place, a damp place, a place where the unit is exposed to the direct sunlight, a place where dust is present, or a place that the water drops.



### ■ Water filtration device installation place 2

Please install at the place where it is 10 cm or more off from the wall and the bottom is flat and firm.



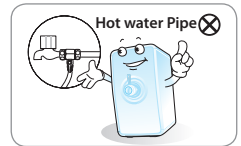
### ■ After installing the water filtration system

Please empty the water tank filled with filtered water two times after the product installation.



### ■ Cold water plumbing

Please connect the source water. Make sure that the source water is not from hot water line. If you use hot water as source water, then it will cause permanent damages to RO membrane and severely degrade the product performance.



Tips

To maintain optimal product performance, consult a Coway engineer for the detailed installation methods.

⚠️ There may be some water remaining inside of the filter which was used to test the product during inspection process at the factory.

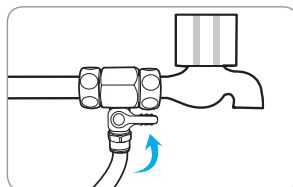
Please feel at easy and use as it isn't the used product.

⚠️ Don't reuse the main water supply valve and hose that was previously used when you re-install the product.

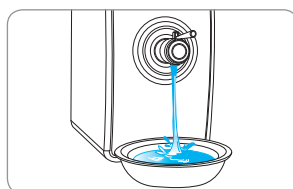
# CLEANING METHOD

## | Storage tank |

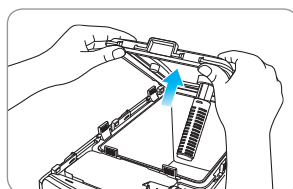
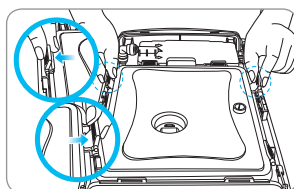
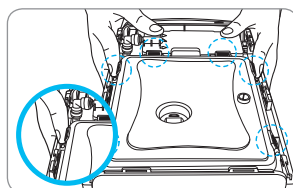
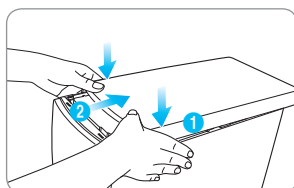
1. Close the main water supply valve.



2. Please empty the water tank completely using the continuous extraction method (See P.9).

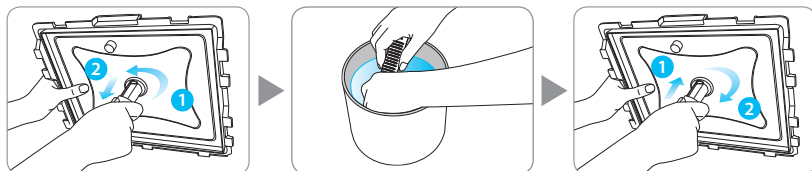


3. Please remove the top cover, and then un-hook the fixed clip holding the top cover of the water tank. Now open the tank cover.

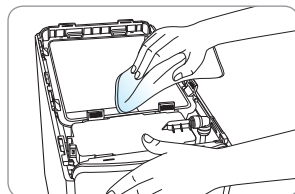


## CLEANING METHOD

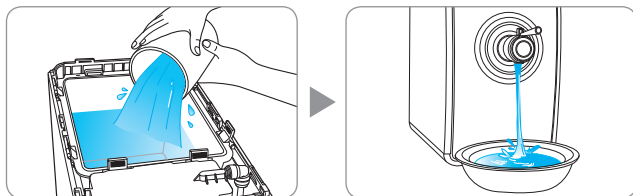
4. Please install again after separating the ceramic filter from the water tank cover and shaking and cleansing in the drained water.



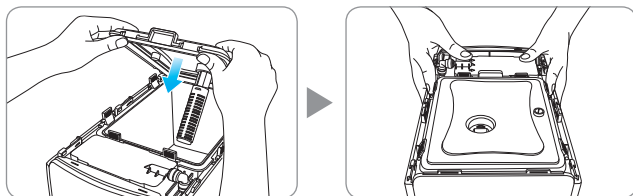
5. Please wipe the surface of the storage tank with soft clothes.



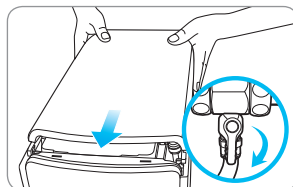
6. Use the storage tank after cleaning it with the drained water, and empty the water tank using the continuous extraction method.



7. Close the water tank cover and assemble the fixing clip.



## 8. Close the upper cover, and open the main water supply valve.



Tips

- ⚠ **Close the storage tank cover completely.**  
Insects or other foreign particles can be entered.
- ⚠ **When you clean the storage tank, don't use any chemicals or detergent.**

If you don't clean chemicals or detergent cleanly, it can be harmful to the body.

- Keep the surroundings clean and clean the storage tank once per two months.



# FILTER REPLACEMENT

## ■ Filter

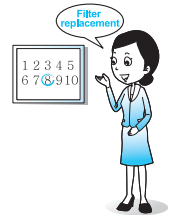
Filter is a critical component for a water filtration system. Replacing authorized filters at a specified replacement cycle is important to maintain the water quality, and a proper system operation. Please replace filters at a specified replacement cycle. For replacement filters, please contact Coway authorized dealers and distributors.



## ■ Filter replacement cycle

If the filter is not regularly replaced, it may degrade the water quality from the product. The source water quality can shorten the filter replacement period.

- \* The period for the filter exchange is made based on 10 L use in a day for house use(4 people based) use for business.



## P-07CL

Part No.	Names of Filter	Replacement Cycle
WJNF8-S	Neo-sense filter	6 months
WJMF8-20-S	Ro membrane filter	20 months
WJIF8-S	Inno-sense filter	18 months
WJCC-02	Ceramic filter	12 months

## ■ About filter replacement cycle

The filter replacement cycle described above is not the filter quality warranty period but the expected cycle (life) that the filter shows its original performance.

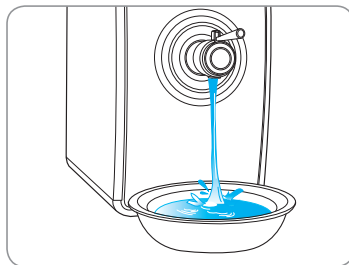
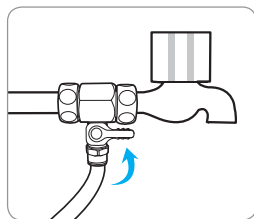
Therefore, the filter replacement cycle may be reduced for the area with the poor water quality or more water consumption.



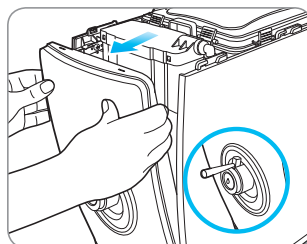
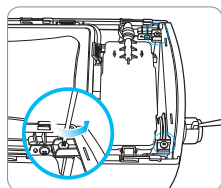
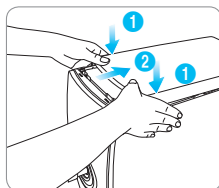


## FILTER REPLACEMENT METHOD

1. Close the main water supply valve and drain the water inside of the water filtration device (See P.12).



2. Separate the top cover and the front cover.  
(Remove the 2 fixing screws at the top of the product and then separate the front cover.)

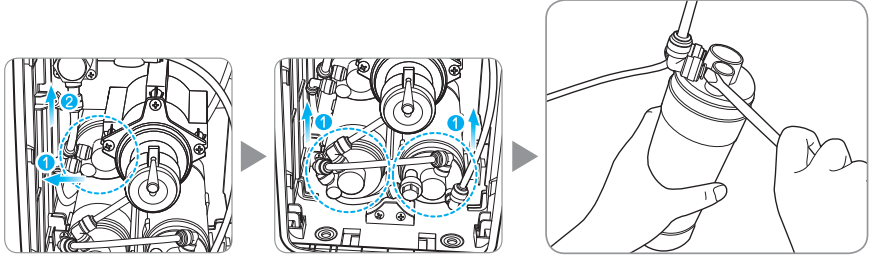


Tips

- ⚠ Don't pull the Cup-touch Lever with the excess power.  
Otherwise, the product may break.

## FILTER REPLACEMENT METHOD

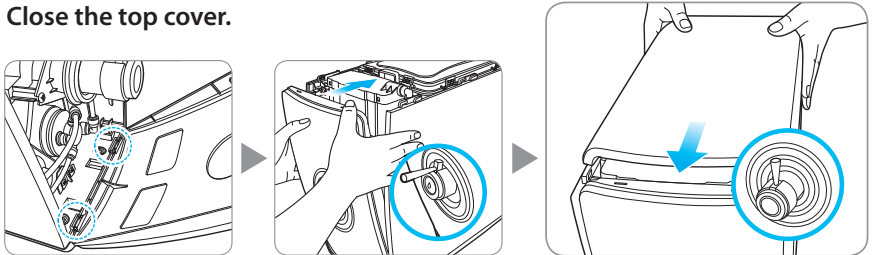
3. After separating the fitting connected to the filter trying to replace, please replace the filter. (Separate the fitting using the proper tool.)



Tips

- ⚠ When you are replacing filters, please make sure that a corresponding filter and a hose are firmly connected and that there is no leakage. It is recommended to empty the water tank filled with the filtered water at least one time right after the filter replacement.

4. Close the front cover aligning the grooves and then fasten the 2 screws fixing the front cover.  
Close the top cover.



Tips

- ⚠ Before installing a new filter, please do the filter cleansing first as directed below:

Filter Name	Cleansing Time	Comment
Neo-sense filter	30 seconds	
Inno-sense filter	3 minutes	Please use Neo-sense filtered water for cleansing
Ro membrane filter	3 minutes	Please use Neo-sense filtered water for cleansing

# TROUBLESHOOTING

The water Filtration device may operate abnormally due to minor causes not because of the product malfunction but because of the fact that the user is not familiar with the product use. In such a case, problems can be solved easily even without the help from the Service Center by checking the following items. If you can't solve the problem after checking the following items, please call the Service Center.

Symptom	Check	Measures to take
The water tastes weird.	• Did you clean the storage tank?	Clean the storage tank.
	• You didn't use the water filtration device for a long time.	Get rid of the saved water and clean the storage tank.
	• Isn't it about time to change the filter?	Request the filter replacement.
The water doesn't come.	• Is the water supply cut or isn't the water supply valve closed?	Open the main water supply valve.
	• The water extraction faucet is out of order.	In this case, please contact a service center.
	• Did you miss the filter replacement times?	Request the filter replacement.
The water is flowing slower.	• Isn't it about time to change the filter?	Request the filter replacement.
	• Didn't you close the main water supply valve?	Open the main water supply valve.
	• Didn't the temperature of the main water drop suddenly?	If the water temperature is lowered, the water amount is decreased.
A leakage was occurred.	• Doesn't the water inside of the storage tank cover or the water filtration device flow out?	Check by opening the upper cover and request the service after closing the main water valve.

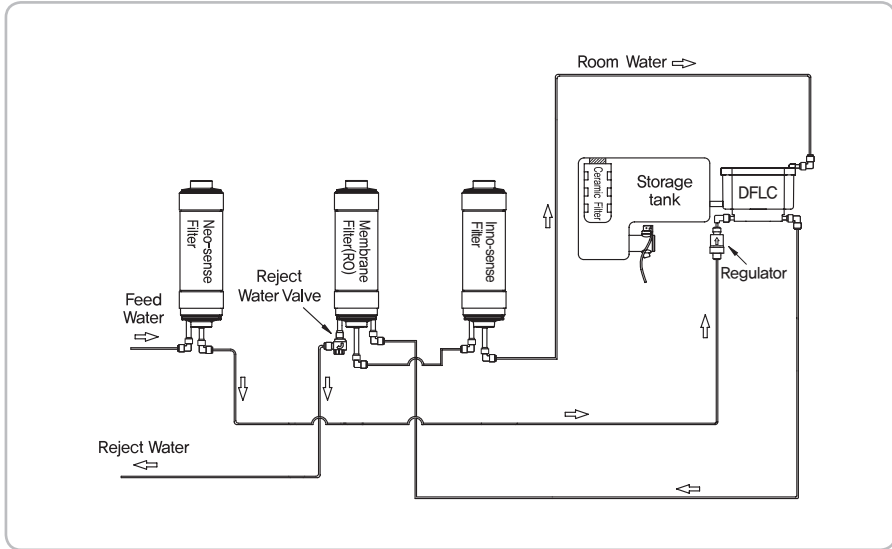
# SPECIFICATION

Product	Water Filtration Device
Model	P-07CL
Filtration Method	RO(Reverse Osmosis)
Tank Capacity	3.9 L
Dimension	200 mm(W) × 390 mm(D) × 370 mm(H)
Working Temperature	5 °C - 35 °C
Production Rate	76.8 L/d(25 °C, 138 kPa)
Working Pressure	138 kPa – 827 kPa
Net Weight	4.5 kg

- The water amount can be differentiated according to the water pressure and the water temperature.
- The water tank capacity is the amount by the size and can be different from the extraction capacity.
- Without any prior notice, all or parts of the product are subject to change for the purpose of improving the performance of the product.
- Refer to Performance data sheet for individual contaminants, reduction performance and general operating information.

# WATER FLOW DIAGRAM

P-07CL



# Water Filtration System Performance Data Sheet



**Brand: Neos**

**Model: P-07CL**

This system has been tested and certified by the Water Quality Association according to NSF/ANSI 42, 53, and 58 for the reduction of the substances listed below. The concentration of the indicated substances in water entering the system was reduced to a concentration less than or equal to the permissible limit for water leaving the system, as specified in NSF/ANSI 42, 53, and 58.

Substance	Max. Allowable Concentration (mg/L)	Average Influent (mg/L)	Average Effluent (mg/L)	Minimum Percent Reduction (%)	Average Percent Reduction (%)
Arsenic (Pentavalent)	0.010	0.05	0.006	79.1	87.7
Barium	2.0	10	1.4	83.5	86.6
Radium 226/228	5pCi/L	25pCi/L	5pCi/L	N/A	N/A
Cadmium	0.005	0.031	0.002	89.0	92.7
Chromium (Hexavalent)	0.1	0.358	0.023	93.8	95.1
Chromium (Trivalent)	0.1	0.367	0.028	93.8	95.7
Lead	0.010	0.153	0.005	93.6	95.1
Nitrate/Nitrite	10	29.6	4.8	78.5	83.7
Selenium	0.05	0.117	0.003	96.0	97.8
TDS	<187.5	741.5	57.8	91.5	92.2
Aesthetic Chlorine	≥ 50%	2.07	0.56	54.53	72.8
VOC*	≥ 95% reduction	0.32	0.0077	95.70	97.6

While testing was performed under laboratory conditions, actual performance may vary.

## General Operating Information:

Rated Capacity	165 gallons (for VOC) 4,400 gallons (for Aesthetic Chlorine)
Min-Max operating pressure:	20 ~ 120 psi (1.4 ~ 8.4 kgf/cm <sup>2</sup> )
Min-Max feed water temperature:	41 ~ 95 °F (5 ~ 35 °C)
Rated Service Flow	0.07 GPM (for VOC) 0.5 GPM (for Aesthetic Chlorine)
Daily Water Production Rate	42 GPD
Product Efficiency Rating	26.5 %

- Do not use with water that is microbiologically unsafe or of unknown quality without adequate disinfection before or after the system.
- Refer to the owners manual for specific installation instructions, manufacturer's limited warranty, user responsibility, and parts and service availability.
- The influent water to the system shall include the following characteristics:
  - No organic solvents
  - Chlorine: < 2 ppm
  - pH: 7 - 8
  - Temperature: 41 ~ 95 °F (5 ~ 35 °C)
  - Iron: < 2 ppm
  - Turbidity: < 1 NTU
  - Hardness: < 1000 mg/L

- For parts and service availability, please contact your local dealer or Coway.
- This system is acceptable for treatment of influent concentrations of no more than 27 mg/L nitrate and 3 mg/L nitrite in combination measured as N and is certified for nitrate/nitrite reduction only for water supplies with a pressure of 2.8 kgf/cm<sup>2</sup> (40 psi) or greater.
- A nitrate/nitrite sampling kit should be used to monitor the nitrate/nitrite levels in your product drinking water at least every six months. Kits maybe purchased from your local dealer or Coway.
- This system has been tested for the treatment of water containing pentavalent arsenic (also know as As(V), As(+5), or arsenate) at concentrations of 0.050 mg/L or less. This system reduces pentavalent arsenic, but may not remove other forms of arsenic. This system is to be used on water supplies containing a detectable free chlorine residual at the system inlet or on water supplies that have been demonstrated to contain only pentavalent arsenic. Treatment with chloramines (combined chlorine) is not sufficient to ensure complete conversion of trivalent arsenic to pentavalent arsenic. Please see the Arsenic Facts section of this Performance Data Sheet for further information.
- Efficiency rating means the percentage of the influent water to the system that is available to the user as reverse osmosis treated water under operating conditions that approximate typical daily usage.
- The product water should be tested every 6 months to ensure that the contaminants are being reduced effectively. Please contact your local dealer or Coway to initiate this service.
- This reverse osmosis system contains a replaceable treatment components, critical for the effective reduction of total dissolved solids and that product water shall be tested periodically to verify that the system is performing properly. Replacement of reverse osmosis component should be with one of identical specifications, as defined by the manufacturer, to assure the same efficiency and contaminant reduction performance.
- The estimated replacement time of filter, which is a consumable part, is not an indication of quality guarantee period, but it means the ideal time of filter replacement. Accordingly, the estimated time of filter replacement may be shortened in case it is used in an area of poor water quality.

Model of Filter	Type	Usable period (months)	COST US \$
WNF8-S	NEO-SENSE FILTER	6	46.00
WJMF8-20-S	RO MEMBRANE FILTER	20	94.00
WJIF8 -S	INNO SENSE FILTER	18	47.00
WJCC-02	CERAMIC FILTER	12	11.00

## ARSENIC FACTS

Arsenic (abbreviated As) is found naturally in some well water. Arsenic in water has no color, taste or odor. It must be measured by a lab test. Public water utilities must have their water tested for arsenic. You can get the results from your water utility. If you have your own well, you can have the water tested. The local health department or the state environmental health agency can provide a list of certified labs. The cost is typically \$15 to \$30. Information about arsenic in water can be found on the Internet at the US Environmental Protection Agency website:

[www.epa.gov/safewater/arsenic.html](http://www.epa.gov/safewater/arsenic.html)

There are two forms of arsenic: pentavalent arsenic (also called As(V), As(+5), and arsenate) and trivalent arsenic (also called As(III), As(+3), and arsenite). In well water, arsenic may be pentavalent, trivalent, or a combination of both. Special sampling procedures are needed for a lab to determine what type and how much of each type of arsenic is in the water. Check with the labs in your area to see if they can provide this type of service.

Reverse osmosis (RO) water treatment systems do not remove trivalent arsenic from water very well. RO systems are very effective at removing pentavalent arsenic. A free chlorine residual will rapidly convert trivalent arsenic to pentavalent arsenic. Other water treatment chemicals such as ozone and potassium permanganate will also change trivalent arsenic to pentavalent arsenic. A combined chlorine residual (also called chloramine) may not convert all the trivalent arsenic. If you get your water from a public water utility, contact the utility to find out if free chlorine or combined chlorine is used in the water system.

The P-07CL system is designed to remove pentavalent arsenic. It will not convert trivalent arsenic to pentavalent arsenic. The system was tested in a lab. Under those conditions, the system reduced 0.050 mg/L pentavalent arsenic to 0.010 mg/L (ppm) (the USEPA standard for drinking water) or less. The performance of the system may be different at your installation. Have the treated water tested for arsenic to check if the system is working properly. The RO component of the P-07CL system must be replaced every 24 months to ensure the system will continue to remove pentavalent arsenic. The component identification and locations where you can purchase the component are listed in the installation/operation manual.

## \* VOC Surrogate Claims

Chemical	Drinking water regulatory level <sup>1</sup> (MCL/MAC) mg/L	Influent challenge concentration <sup>2</sup> mg/L	Chemical reduction percent	Maximum product water concentration mg/L
alachlor	0.002	0.050	> 98	0.001 <sup>3</sup>
atrazine	0.003	0.100	> 97	0.003 <sup>3</sup>
benzene	0.005	0.081	> 99	0.001 <sup>3</sup>
carbofuran	0.04	0.190	> 99	0.001 <sup>3</sup>
carbon tetrachloride	0.005	0.078	98	0.0018 <sup>4</sup>
chlorobenzene	0.1	0.077	> 99	0.001 <sup>3</sup>
chloropicrin	-	0.015	99	0.0002 <sup>3</sup>
2,4-D	0.07	0.110	98	0.0017 <sup>4</sup>
dibromochloropropane(DBCP)	0.0002	0.052	> 99	0.00002 <sup>3</sup>
o-dichlorobenzene	0.6	0.080	> 99	0.001 <sup>3</sup>
p-dichlorobenzene	0.075	0.040	> 98	0.001 <sup>3</sup>
1,2-dichloroethane	0.005	0.088	95 <sup>5</sup>	0.0048 <sup>5</sup>
1,1-dichloroethylene	0.007	0.083	> 99	0.001 <sup>3</sup>
cis-1,2-dichloroethylene	0.07	0.170	> 99	0.0005 <sup>3</sup>
trans-1,2-dichloroethylene	0.1	0.086	> 99	0.001 <sup>3</sup>
1,2-dichloropropane	0.005	0.080	> 99	0.001 <sup>3</sup>
cis-1,3-dichloropropylene	-	0.079	> 99	0.001 <sup>3</sup>
dinoseb	0.007	0.170	99	0.0002 <sup>4</sup>
endrin	0.002	0.053	99	0.00059 <sup>4</sup>
ethylbenzene	0.7	0.088	> 99	0.001 <sup>3</sup>
ethylene dibromide (EDB)	0.00005	0.044	> 99	0.00002 <sup>3</sup>
haloacetonitriles (HAN):				
bromochloroacetonitrile	-	0.022	98	0.0005 <sup>3</sup>
dibromoacetonitrile	-	0.024	98	0.0006 <sup>3</sup>
dichloroacetonitrile	-	0.0096	98	0.0002 <sup>3</sup>
trichloroacetonitrile	-	0.015	98	0.0003 <sup>3</sup>
haloketones (HK):				
1,1-dichloro-2-propanone	-	0.0072	99	0.0001 <sup>3</sup>
1,1,1-trichloro-2-propanone	-	0.0082	96	0.0003 <sup>3</sup>
heptachlor (H-34,Heptox)	0.0004	0.08	> 99	0.0004
heptachlor epoxide	0.0002	0.0107 <sup>6</sup>	98	0.0002 <sup>6</sup>
hexachlorobutadiene	-	0.044	> 98	0.001 <sup>3</sup>
hexachlorocyclopentadiene	0.05	0.060	> 99	0.000002 <sup>3</sup>
lindane	0.0002	0.055	> 99	0.00001 <sup>3</sup>
methoxychlor	0.04	0.050	> 99	0.0001 <sup>3</sup>
pentachlorophenol	0.001	0.096	> 99	0.001 <sup>3</sup>
simazine	0.004	0.120	> 97	0.004 <sup>3</sup>
styrene	0.1	0.150	> 99	0.0005 <sup>3</sup>
1,1,2,2-tetrachloroethane	-	0.081	> 99	0.001 <sup>3</sup>
tetrachloroethylene	0.005	0.081	> 99	0.001 <sup>3</sup>
toluene	1	0.078	> 99	0.001 <sup>3</sup>
2,4,5-TP (silvex)	0.05	0.270	99	0.0016 <sup>4</sup>
tribromoacetic acid	-	0.042	> 98	0.001 <sup>3</sup>
1,2,4-trichlorobenzene	0.07	0.160	> 99	0.0005 <sup>3</sup>
1,1,1-trichloroethane	0.2	0.084	95	0.0046 <sup>4</sup>
1,1,2-trichloroethane	0.005	0.150	> 99	0.0005 <sup>3</sup>
trichloroethylene	0.005	0.180	> 99	0.0010 <sup>3</sup>
trihalomethanes (includes):				
chloroform (surrogate chemical)				
bromoform				
bromodichloromethane	0.080	0.300	95	0.015
chlorodibromomethane				
xylenes (total)	10	0.070	> 99	0.001 <sup>3</sup>

1. These harmonized values were agreed upon by representatives of USEPA and Health Canada for the purpose of evaluating products to the requirements of this Standard.
2. Influent challenge levels are average influent concentrations determined in surrogate qualification testing.
3. Maximum product water level was not observed but was set at the detection limit of the analysis.
4. Maximum product water level is set at a value determined in surrogate qualification testing.
5. Chemical reduction percent and maximum product water level calculated at chloroform 95% breakthrough point as determined in surrogate qualification testing.
6. The surrogate test results for heptachlor epoxide demonstrated a 98% reduction. These data were used to calculate an upperoccurrence concentration which would produce a maximum product water level at the MCL.

Woongjin Coway, Ltd.  
658, Yugu-Ri, Yugu Eub, Gongju-Si, Choongchungnam-Do, Korea  
Tel.: 82-41-850-7879 Fax.: 82-41-841-7816



# MEMO

---



**WARRANTY CARD OR WARRANTY LETTER  
ONE YEAR LIMITED WARRANTY  
WATER FILTRATION DEVICE P-07CL (“PRODUCT”)**

**Model:**

**Serial Number:**

**Customer Name:**

**(“OWNER”)**

**Date of Purchase:**

**What This Warranty Covers:**

Commencing with the date of purchase of the Product and continuing for a period of one year, if manufacturing defects in the Product cause the Product to not operate properly for its intended use, then subject to the exclusions, conditions, and limitations contained herein, COWAY at its sole option will repair or replace the Product.

Decisions as to the extent of repair or replacement required will be made solely by COWAY.

The remedy under this Warranty is available only for that portion of the Product exhibiting defects at the time of the warranty claim. The replacement Product as well as any remaining original Product will be warranted only for the original one year warranty period. This limited warranty applies only to Product used for an application specified by COWAY for the Product and applied in strict accordance with COWAY published specifications in effect at the time of application. IF PRODUCT IS USED FOR OTHER THAN ITS INTENDED PURPOSE, IT IS SOLD AS IS AND WITHOUT ANY EXPRESS OR IMPLIED WARRANTIES, INCLUDING OF MERCHANTABILITY OR FITNESS FOR A PARTICULAR PURPOSE.

**What This Warranty Does Not Cover:**

This Warranty warrants that the Product will be free from manufacturing defects which affect the ability of the Product to operate for its intended use; it is not a warranty that the Product will never require repairs or to undertake responsibilities, liabilities or obligations other than those specifically identified in the preceding section. COWAY is not responsible or liable for personal injury or property damage of any kind, even if arising from a breach of this Warranty.

**Limitations and Exclusions:**

TO THE EXTENT PERMITTED BY APPLICABLE LAW, COWAY DISCLAIMS ANY OTHER WARRANTY EXPRESS OR IMPLIED, THAN THAT GUARANTEES FOR HEREIN. THIS WARRANTY IS IN LIEU OF AND EXCLUDES ALL OTHER WARRANTIES, PROVIDES, CONDITIONS AND REPRESENTATIONS, EXPRESS OR IMPLIED, ORAL OR WRITTEN, STATUTORY OR OTHERWISE, INCLUDING BUT NOT LIMITED TO ANY IMPLIED CONDITIONS OR WARRANTIES AS TO THE MERCHANTABILITY OR FITNESS FOR A PARTICULAR PURPOSE OF THE COWAY PRODUCT. SOME STATES DO NOT ALLOW LIMITATIONS ON HOW LONG AN IMPLIED WARRANTY LASTS, SO THE ABOVE LIMITATION MAY NOT APPLY TO YOU. COWAY DOES NOT AUTHORIZE ANY PERSON INCLUDING ITS REPRESENTATIVES, TO MAKE ANY REPRESENTATION OR TO OFFER ANY WARRANTY, CONDITION OR GUARANTY IN RESPECT OF THE PRODUCT OTHER THAN THIS WARRANTY. THIS LIMITED WARRANTY SHALL BE THE OWNER'S SOLE AND EXCLUSIVE REMEDY AGAINST COWAY AND COWAY SHALL NOT BE LIABLE FOR ANY CONSEQUENTIAL, EXEMPLARY, SPECIAL, INCIDENTAL OR OTHER DAMAGES INCLUDING, BUT NOT LIMITED TO, LOSS OF PROFITS, AND LOSS OF USE. INCIDENTAL, CONSEQUENTIAL AND EXEMPLARY DAMAGES SHALL NOT BE RECOVERABLE EVEN IF THE REMEDIES OR THE ACTIONS PROVIDED FOR IN THIS WARRANTY FAIL OF THEIR ESSENTIAL PURPOSE. SOME STATES DO NOT ALLOW THE EXCLUSION OR LIMITATION OF INCIDENTAL OR CONSEQUENTIAL DAMAGES, SO THE ABOVE LIMITATION OR EXCLUSION MAY NOT APPLY TO YOU. COWAY SHALL NOT BE LIABLE FOR ANY DAMAGES WHICH ARE BASED UPON NEGLIGENCE, BREACH OF WARRANTY, STRICT LIABILITY OR ANY OTHER LEGAL THEORY OF LIABILITY OTHER THAN THE EXCLUSIVE LIABILITY SET FORTH IN THIS WARRANTY

**Limitations on Implied Warranties:**

Any implied warranty of merchantability or fitness for a particular purpose or use, shall be limited to the duration of the foregoing express written warranty.

**Conditions of Warranty:**

COWAY's continuing liability under this Warranty is conditioned upon the following :

- a) The defect or damage is not caused by or is the result of : abnormal use or conditions; improper storage, unauthorized modifications or repair; misuse, neglect, accident, alteration, improper installation or other acts that are not the fault of Coway or the manufacturer of the product or that are not covered by the manufacturer's warranty;
- b) The Product has not been altered, modified or repaired without prior written approval of COWAY;
- c) The OWNER has notified COWAY in writing of any failure of the Product covered by this Warranty within thirty (30) days following such failure;
- d) There has been no misuse, abuse or negligence with respect to the Product on the part of the OWNER.

**Waiver:**

COWAY's failure at any time to enforce or rely upon any of the terms or conditions stated herein shall not be construed to be a waiver of its rights hereunder.

**Obtaining Warranty Service and OWNER'S Duties:**

If the Product fails to operate for its intended purpose, then notify Coway or its Representative Agency within 48 hours or within the next business day after discovery of any defect in the Product. The OWNER must give written notice to COWAY no later than thirty (30) days after a defect is discovered or should by reasonable diligence have been discovered. Claims under this Warranty will require proof of purchase by the OWNER.

**USA**

Add : WOONGJIN COWAY USA, INC.  
695 SOUTH VERMONT, STE. 110(SOUTH TOWER) LOS ANGELES, CA 90005, USA  
Call center. : (213) 386-9900 / (213) 480-1600  
Fax. : (213) 386-3990



## Free Manuals Download Website

<http://myh66.com>

<http://usermanuals.us>

<http://www.somanuals.com>

<http://www.4manuals.cc>

<http://www.manual-lib.com>

<http://www.404manual.com>

<http://www.luxmanual.com>

<http://aubethermostatmanual.com>

Golf course search by state

<http://golfingnear.com>

Email search by domain

<http://emailbydomain.com>

Auto manuals search

<http://auto.somanuals.com>

TV manuals search

<http://tv.somanuals.com>